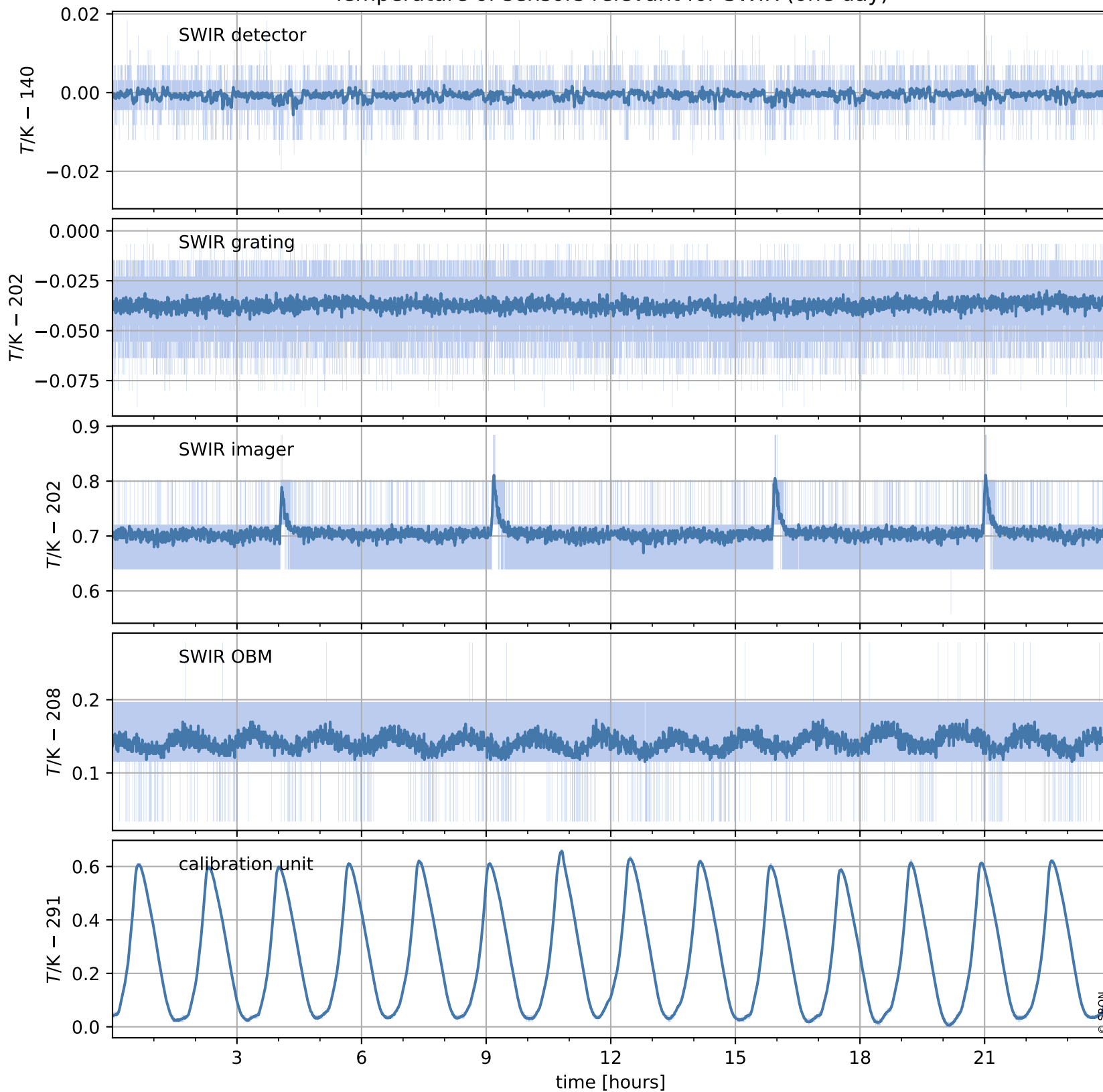


# Tropomi SWIR housekeeping data

orbits : [19971, 19984]  
coverage : 2021-08-21 / 2021-08-22  
created : 2023-08-21T09:16:38

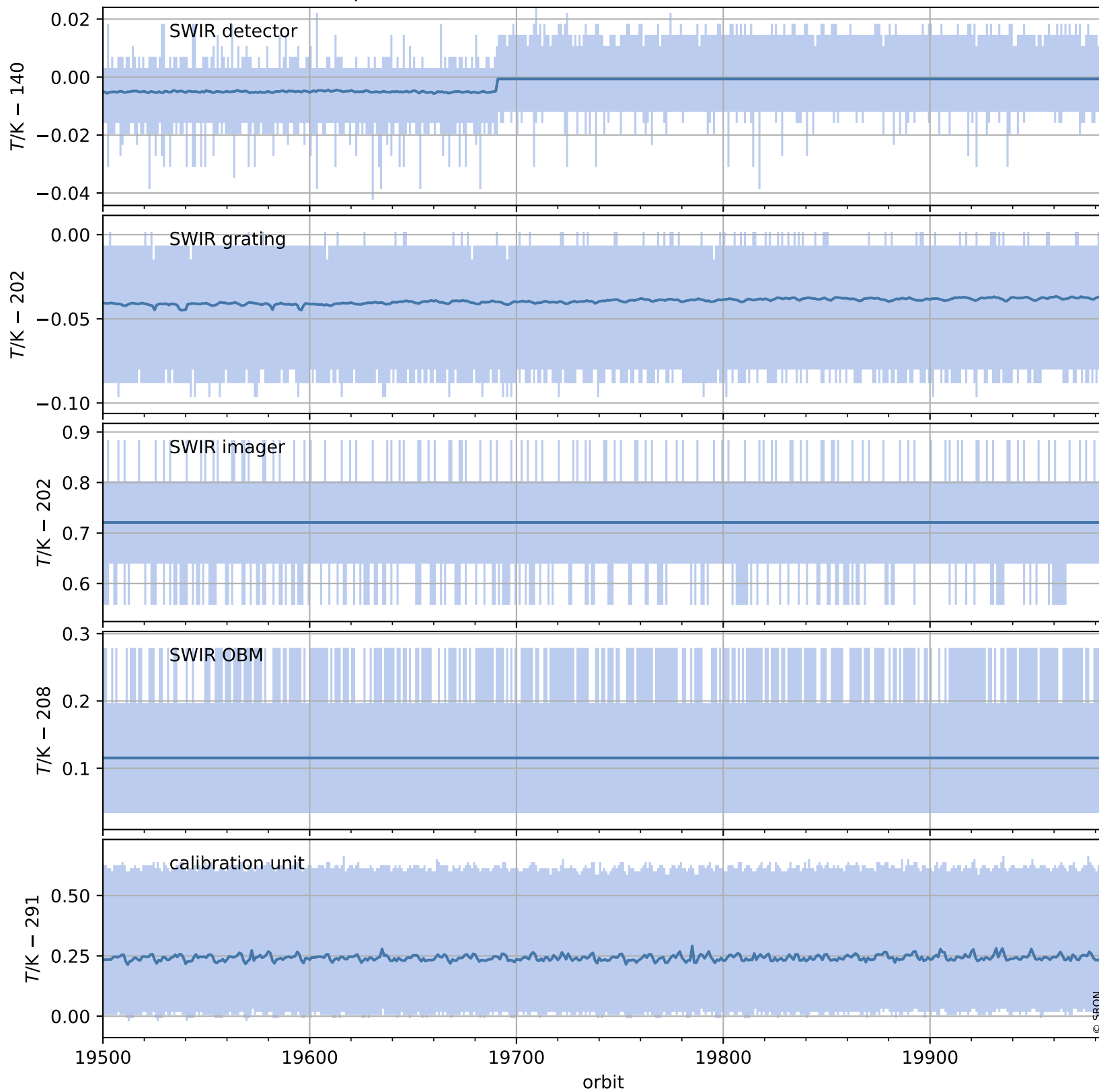
## Temperature of sensors relevant for SWIR (one day)



# Tropomi SWIR housekeeping data

orbits : [19500, 19984]  
coverage : 2021-07-18 / 2021-08-22  
created : 2023-08-21T09:16:39

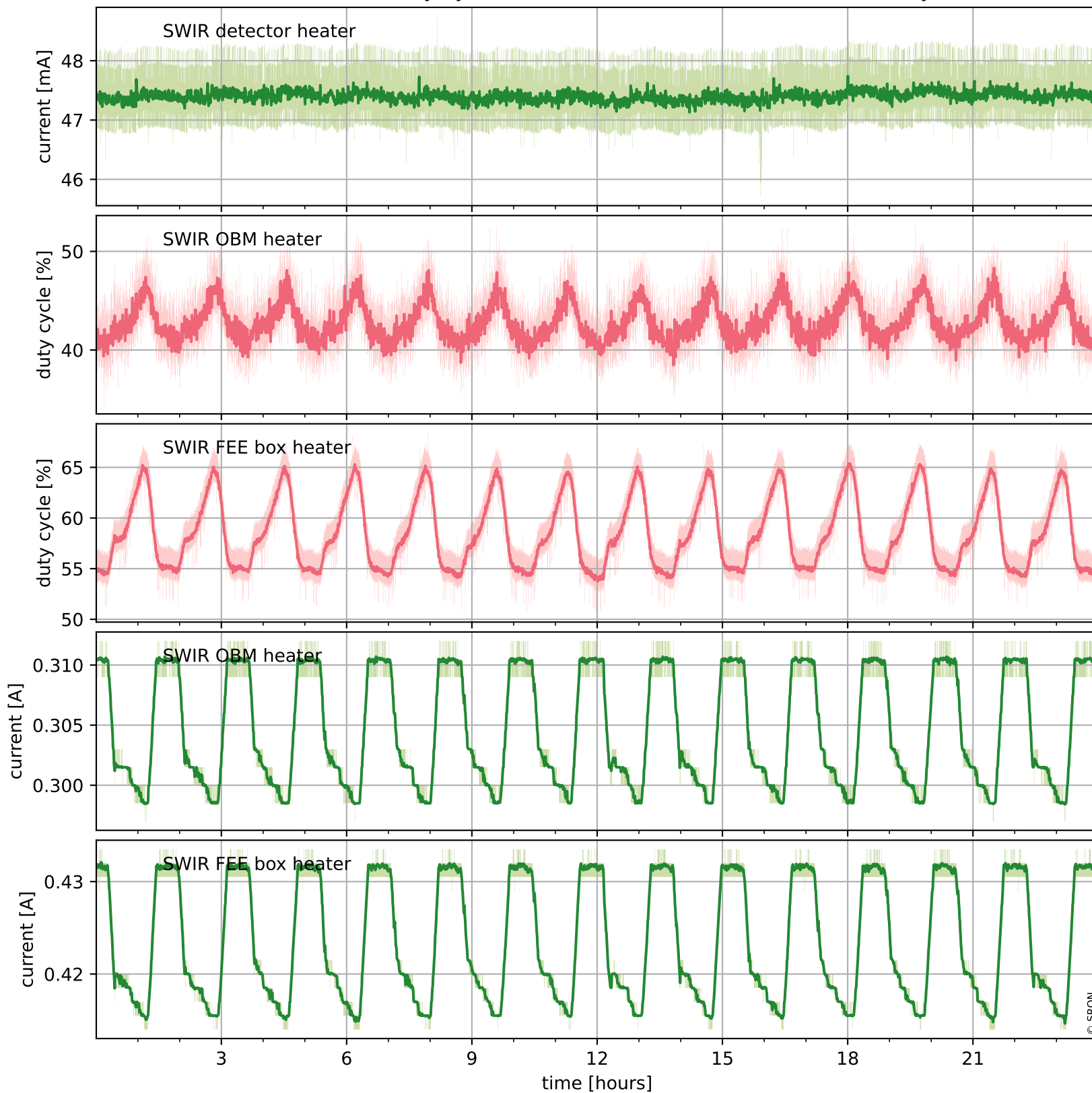
## Temperature of sensors relevant for SWIR (last month)



# Tropomi SWIR housekeeping data

orbits : [19971, 19984]  
coverage : 2021-08-21 / 2021-08-22  
created : 2023-08-21T09:16:39

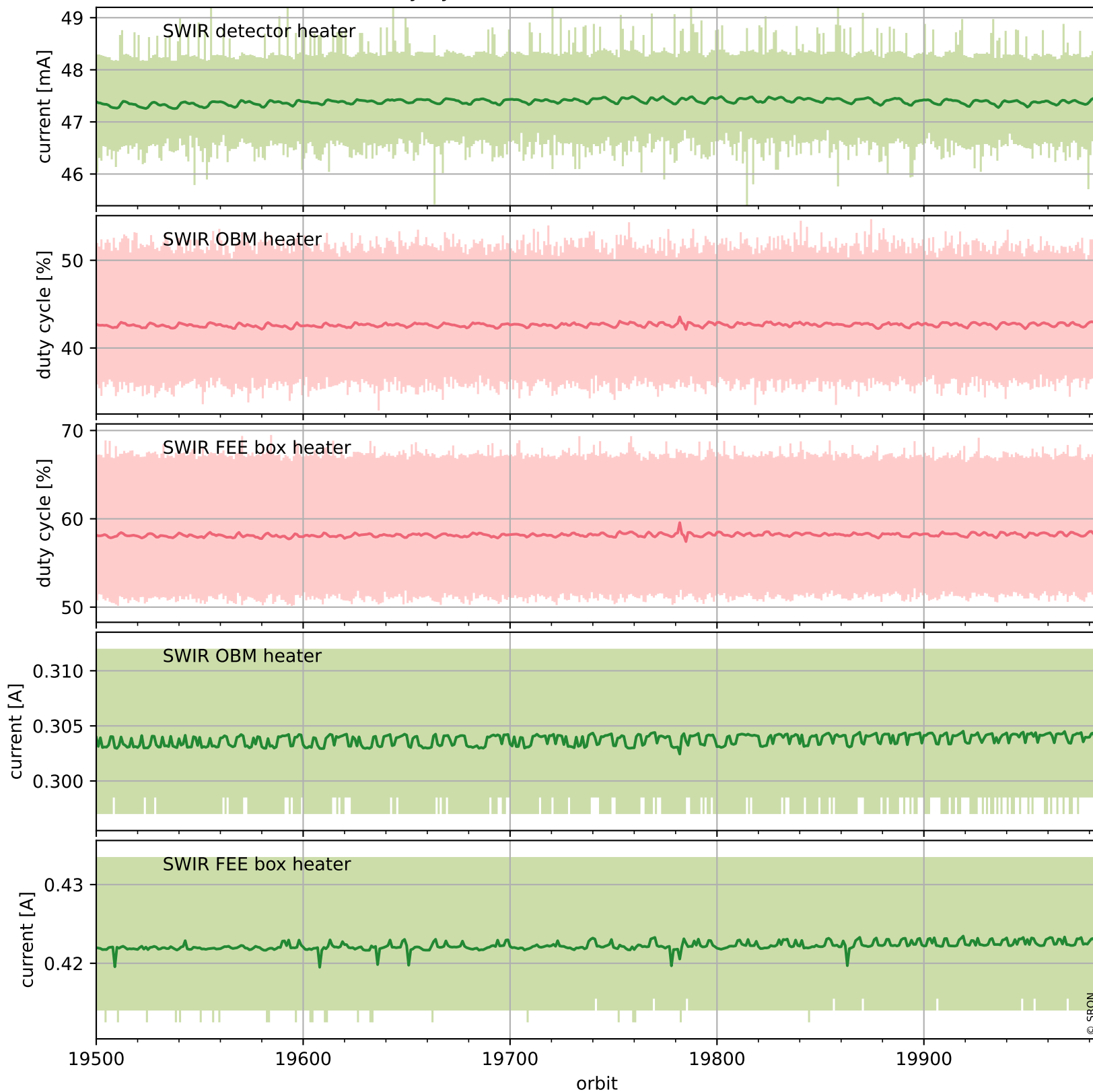
## Current and duty cycle of 3 heaters relevant for SWIR (one day)



# Tropomi SWIR housekeeping data

orbits : [19500, 19984]  
coverage : 2021-07-18 / 2021-08-22  
created : 2023-08-21T09:16:40

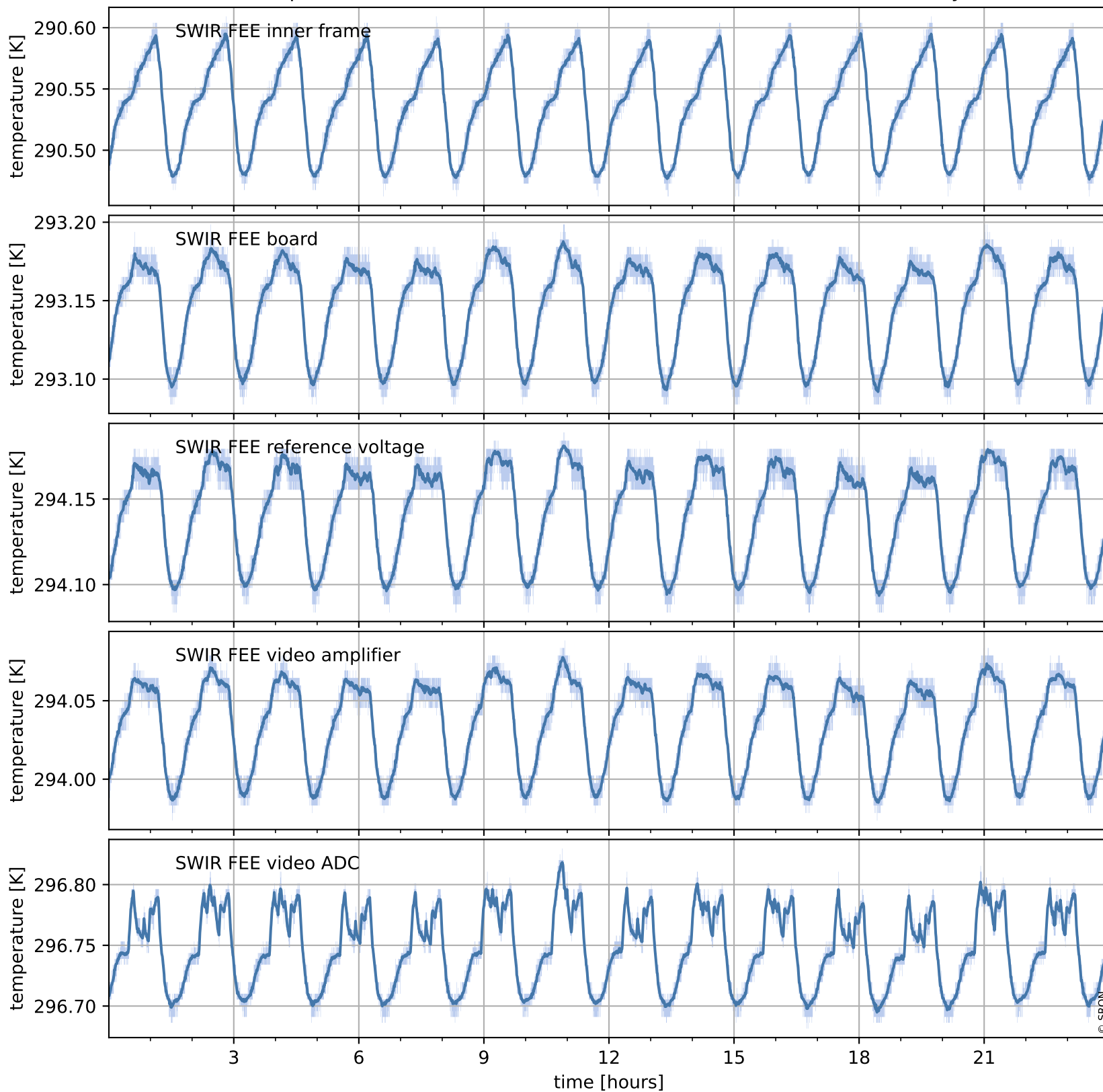
## Current and duty cycle of 3 heaters relevant for SWIR (last month)



# Tropomi SWIR housekeeping data

orbits : [19971, 19984]  
coverage : 2021-08-21 / 2021-08-22  
created : 2023-08-21T09:16:40

## Temperature of sensors at the SWIR front-end electronics (one day)



# Tropomi SWIR housekeeping data

orbits : [19500, 19984]  
coverage : 2021-07-18 / 2021-08-22  
created : 2023-08-21T09:16:40

## Temperature of sensors at the SWIR front-end electronics (last month)

