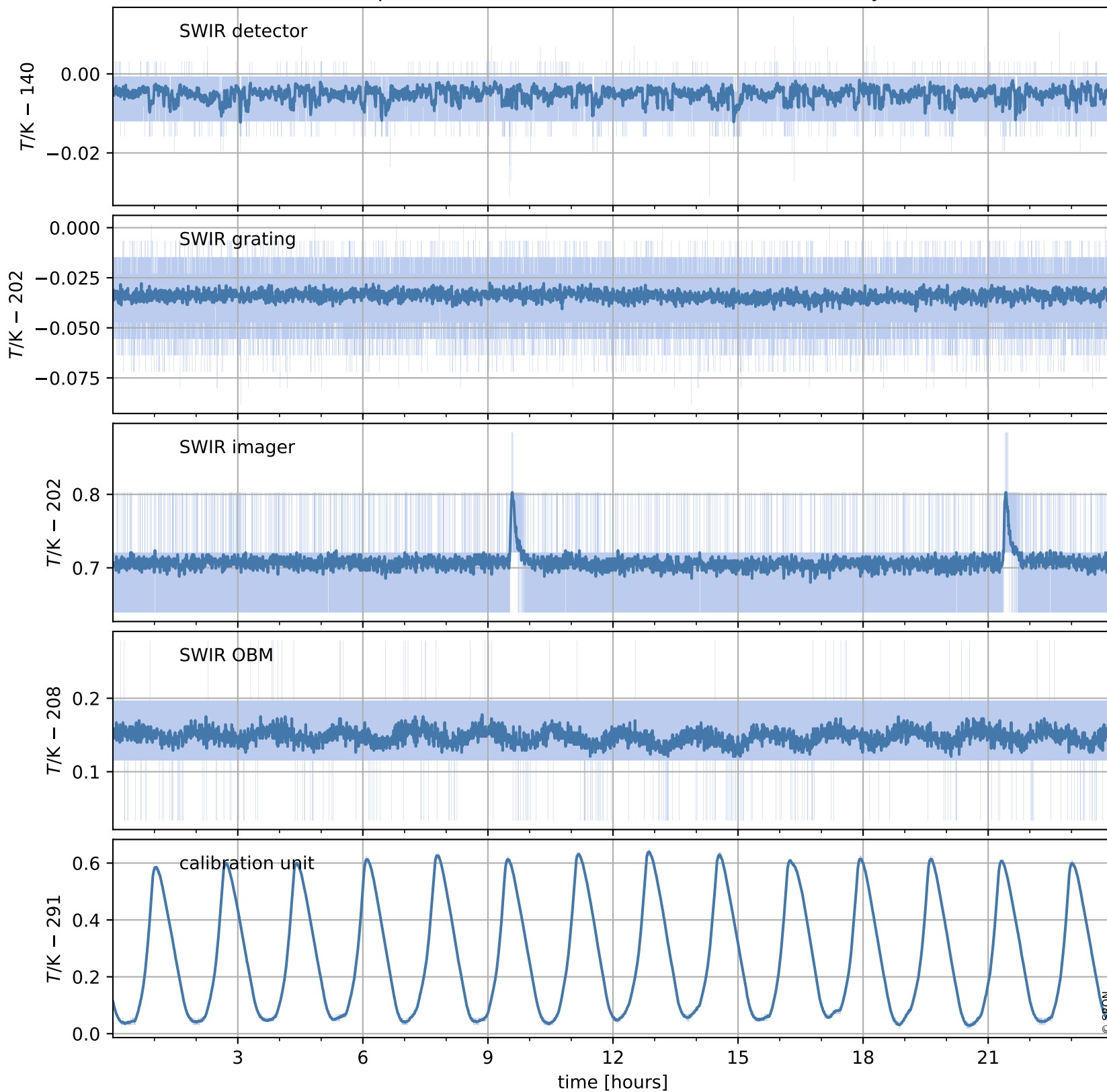


# Tropomi SWIR housekeeping data

orbits : [25476, 25489]  
coverage : 2022-09-13 / 2022-09-14  
created : 2023-08-21T09:31:40

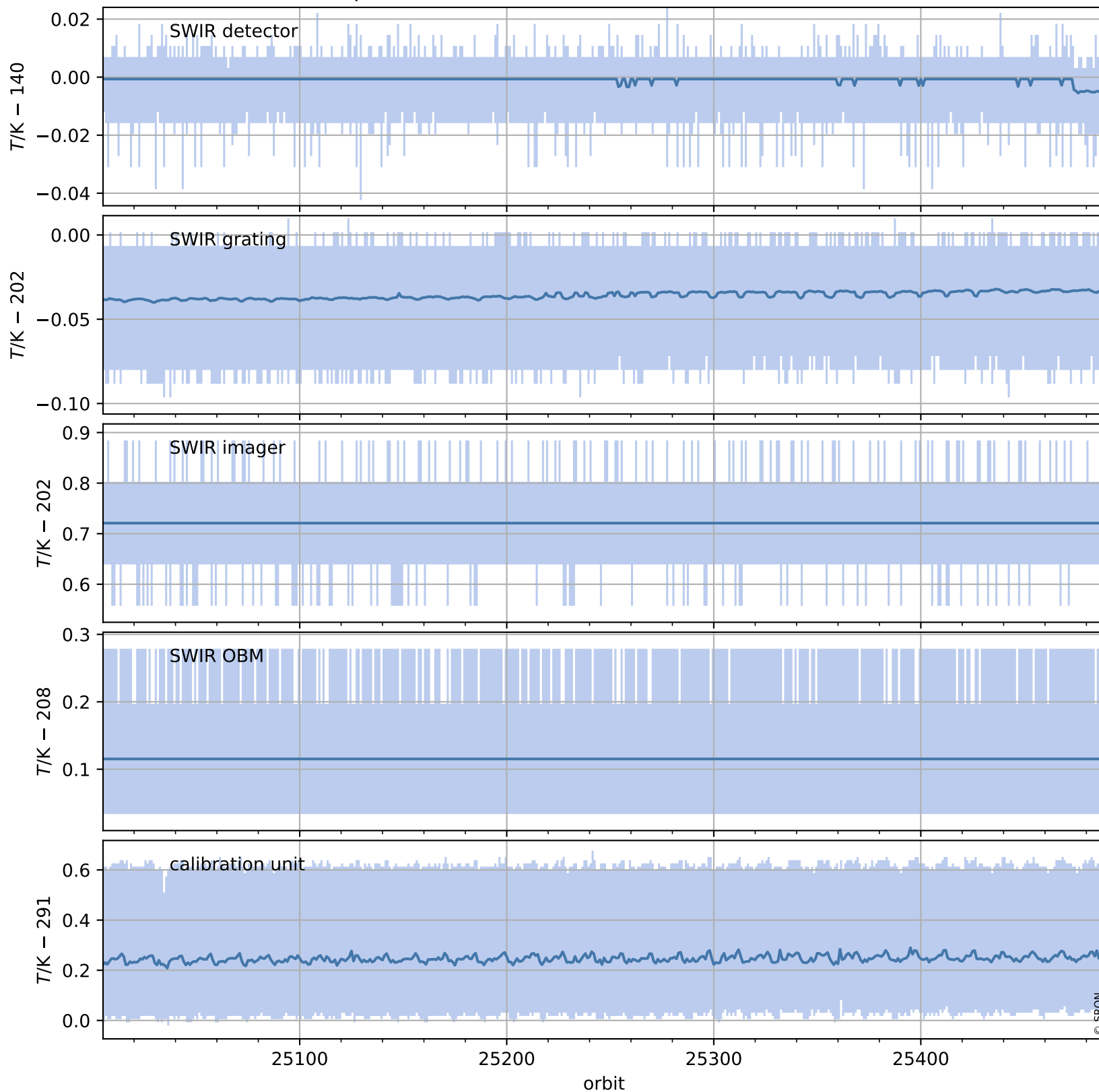
## Temperature of sensors relevant for SWIR (one day)



# Tropomi SWIR housekeeping data

orbits : [25005, 25489]  
coverage : 2022-08-10 / 2022-09-14  
created : 2023-08-21T09:31:41

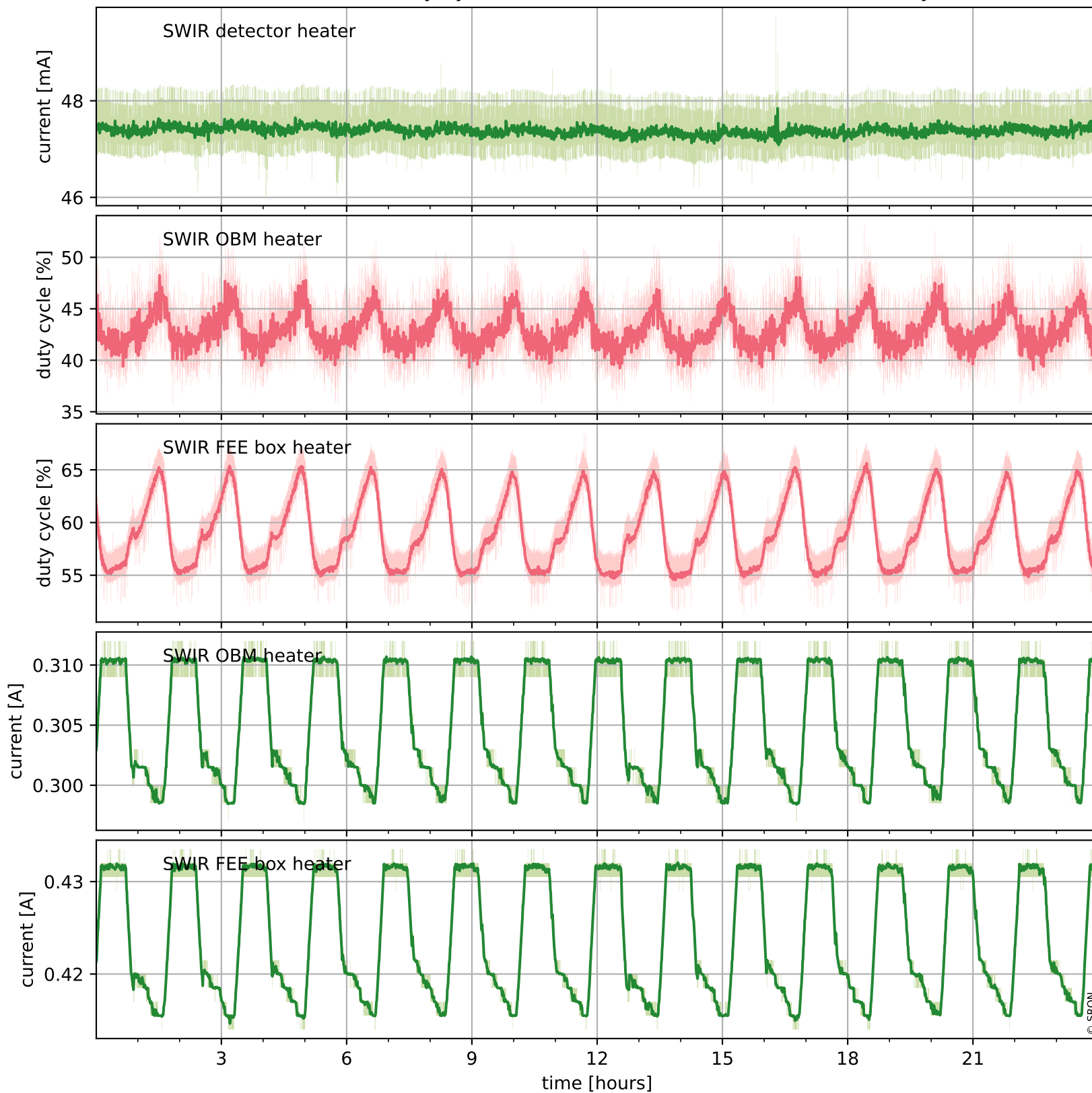
## Temperature of sensors relevant for SWIR (last month)



# Tropomi SWIR housekeeping data

orbits : [25476, 25489]  
coverage : 2022-09-13 / 2022-09-14  
created : 2023-08-21T09:31:41

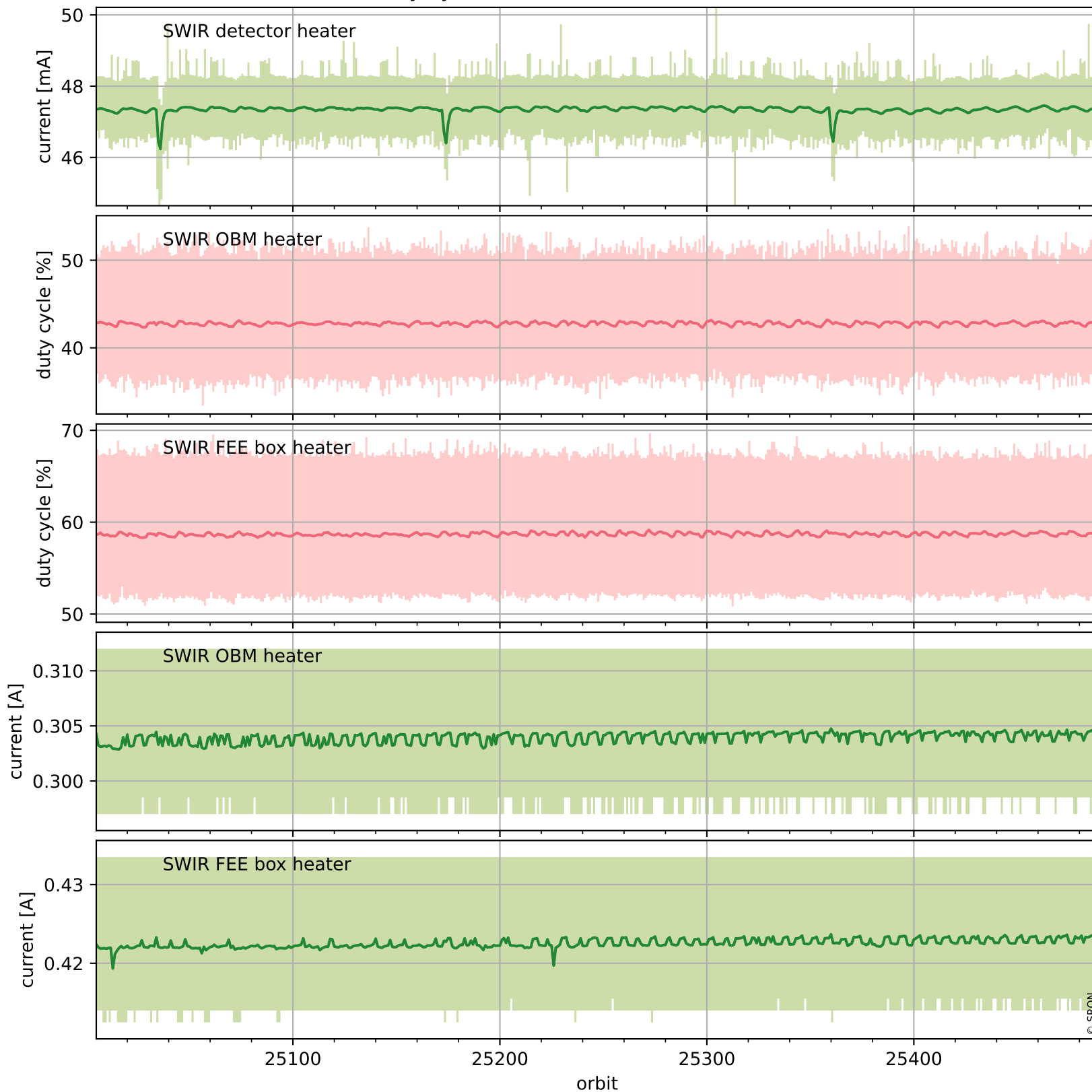
## Current and duty cycle of 3 heaters relevant for SWIR (one day)



# Tropomi SWIR housekeeping data

orbits : [25005, 25489]  
coverage : 2022-08-10 / 2022-09-14  
created : 2023-08-21T09:31:41

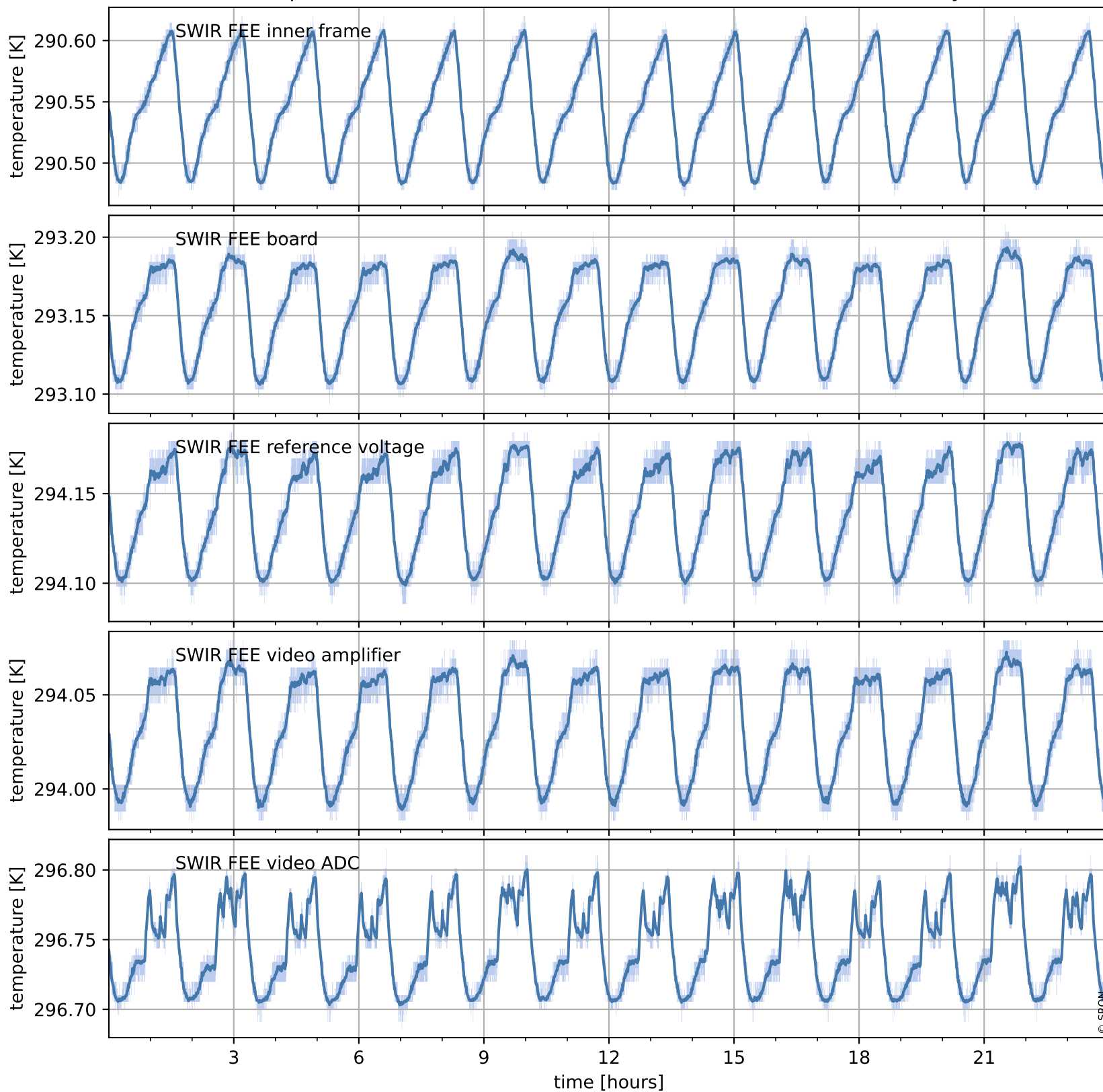
## Current and duty cycle of 3 heaters relevant for SWIR (last month)



# Tropomi SWIR housekeeping data

orbits : [25476, 25489]  
coverage : 2022-09-13 / 2022-09-14  
created : 2023-08-21T09:31:42

## Temperature of sensors at the SWIR front-end electronics (one day)



# Tropomi SWIR housekeeping data

orbits : [25005, 25489]  
coverage : 2022-08-10 / 2022-09-14  
created : 2023-08-21T09:31:42

## Temperature of sensors at the SWIR front-end electronics (last month)

