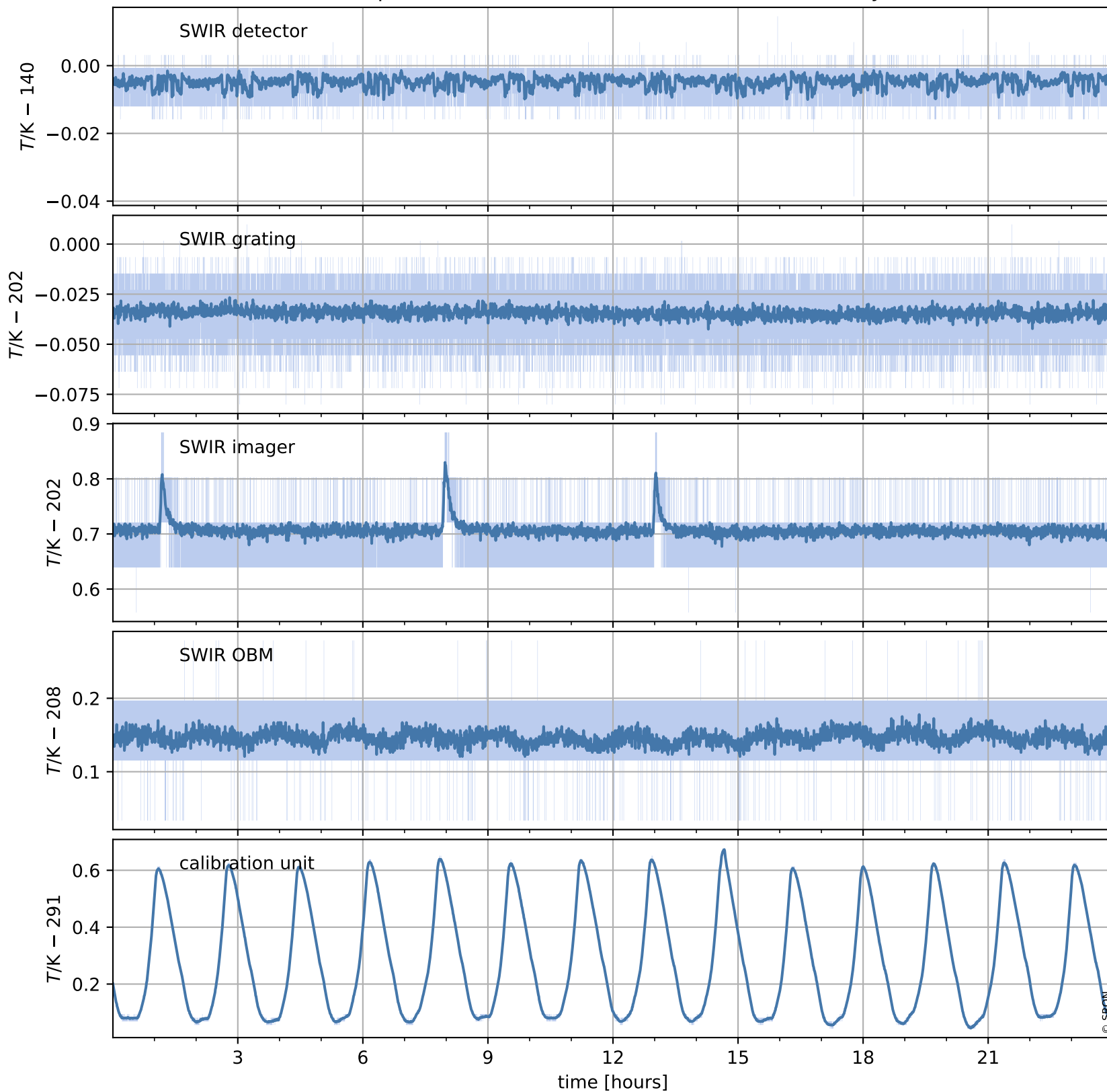


# Tropomi SWIR housekeeping data

orbits : [25774, 25787]  
coverage : 2022-10-04 / 2022-10-05  
created : 2023-08-21T09:32:29

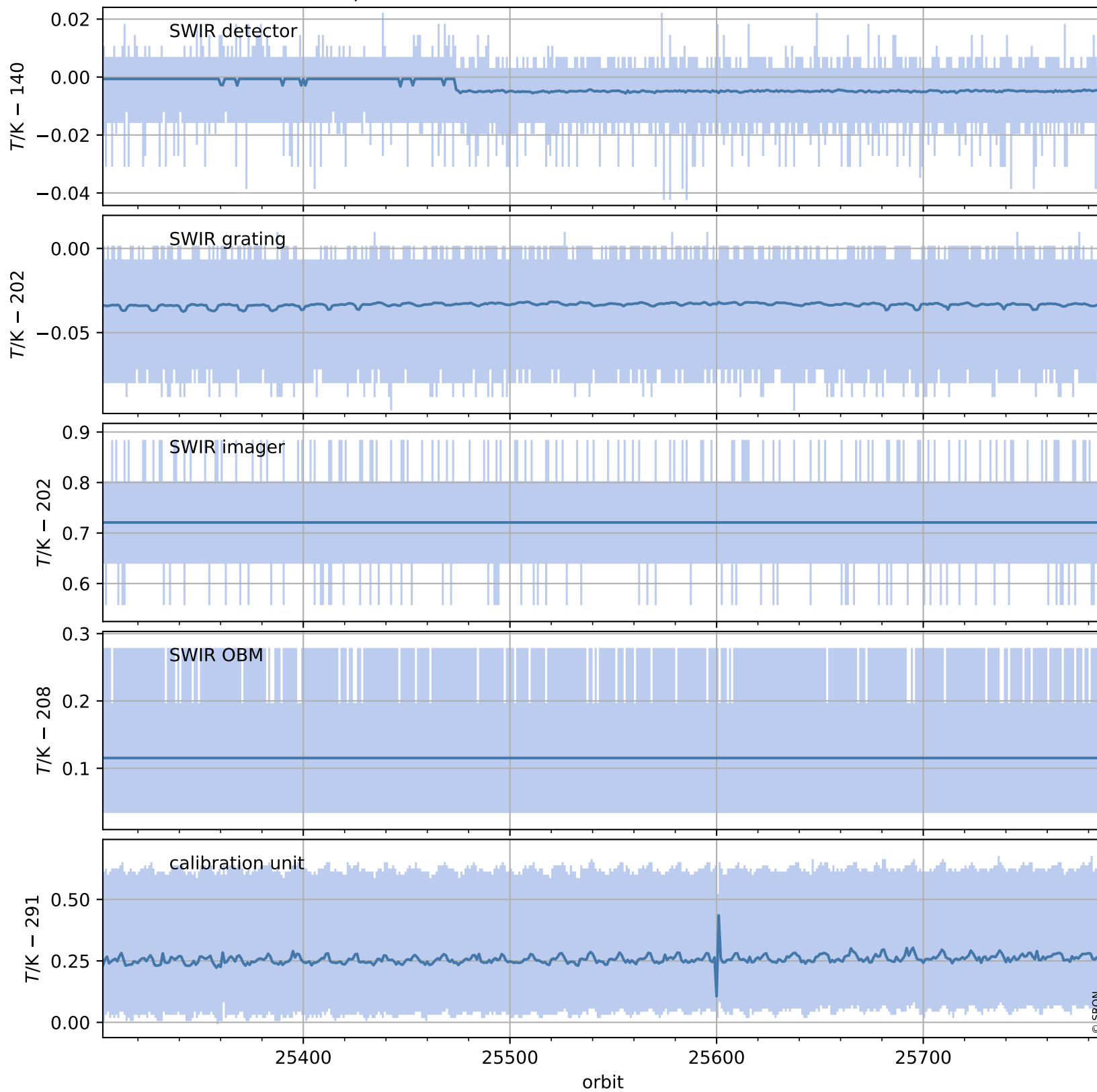
## Temperature of sensors relevant for SWIR (one day)



# Tropomi SWIR housekeeping data

orbits : [25303, 25787]  
coverage : 2022-08-31 / 2022-10-05  
created : 2023-08-21T09:32:29

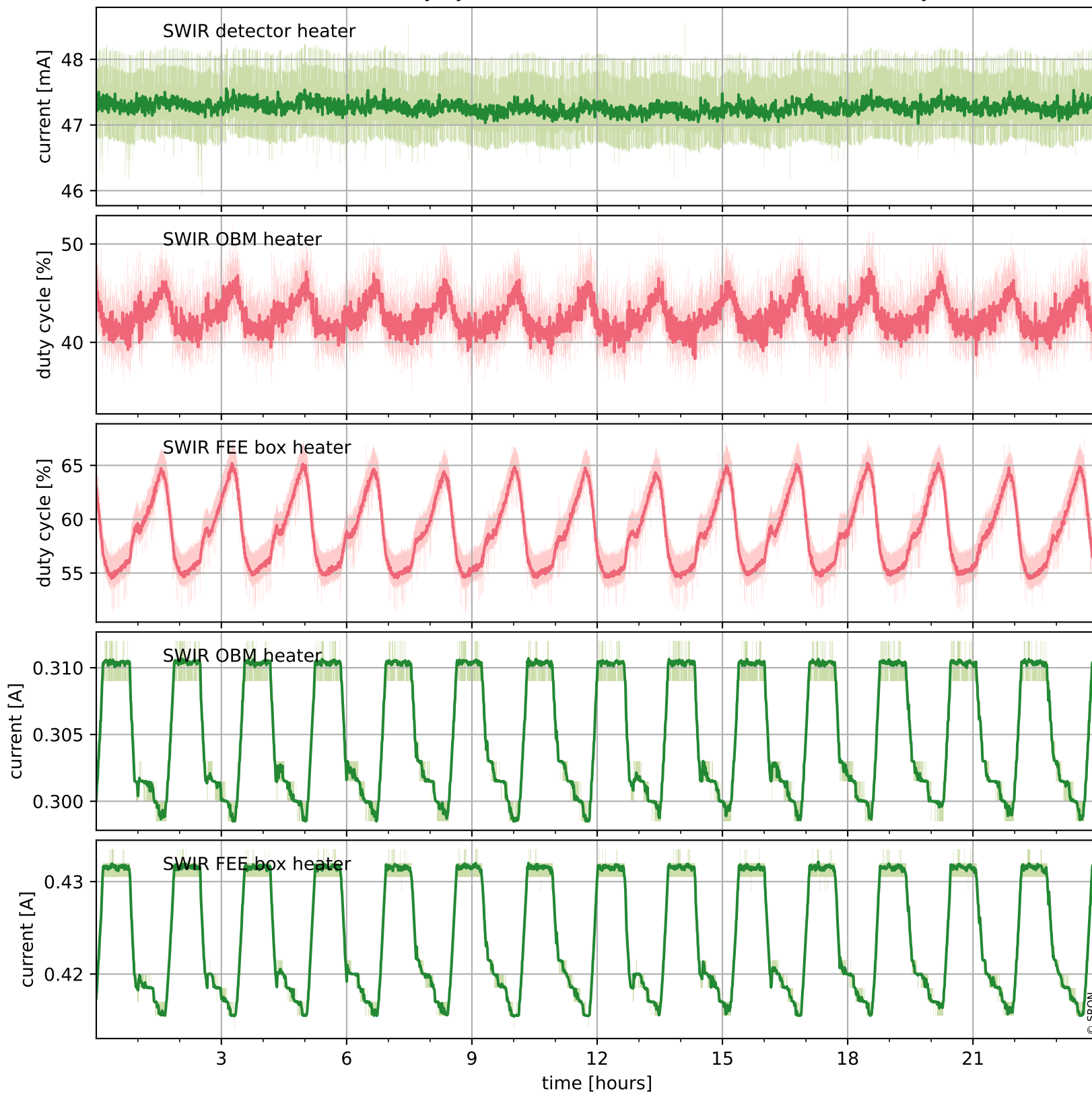
## Temperature of sensors relevant for SWIR (last month)



# Tropomi SWIR housekeeping data

orbits : [25774, 25787]  
coverage : 2022-10-04 / 2022-10-05  
created : 2023-08-21T09:32:29

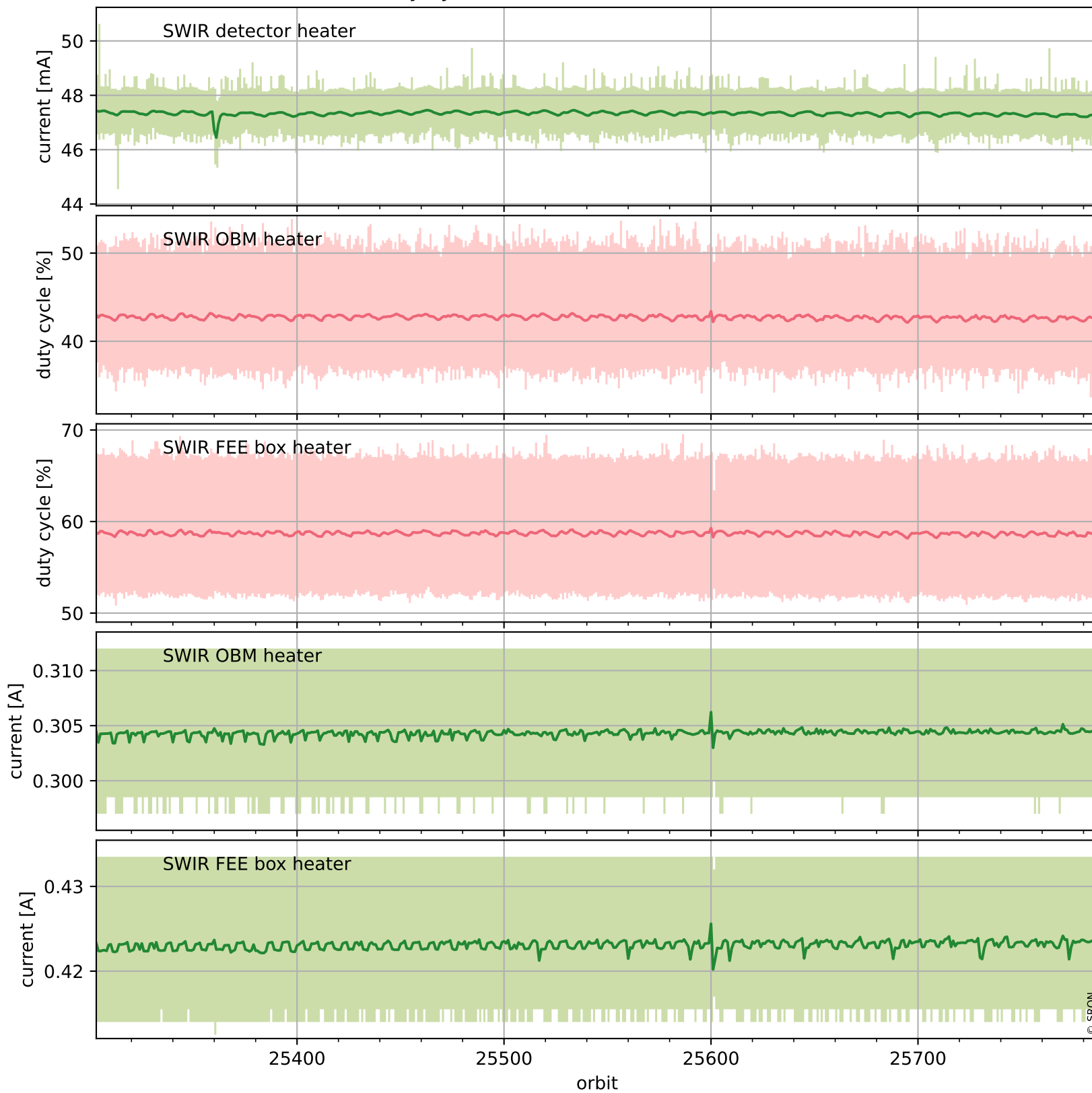
## Current and duty cycle of 3 heaters relevant for SWIR (one day)



# Tropomi SWIR housekeeping data

orbits : [25303, 25787]  
coverage : 2022-08-31 / 2022-10-05  
created : 2023-08-21T09:32:30

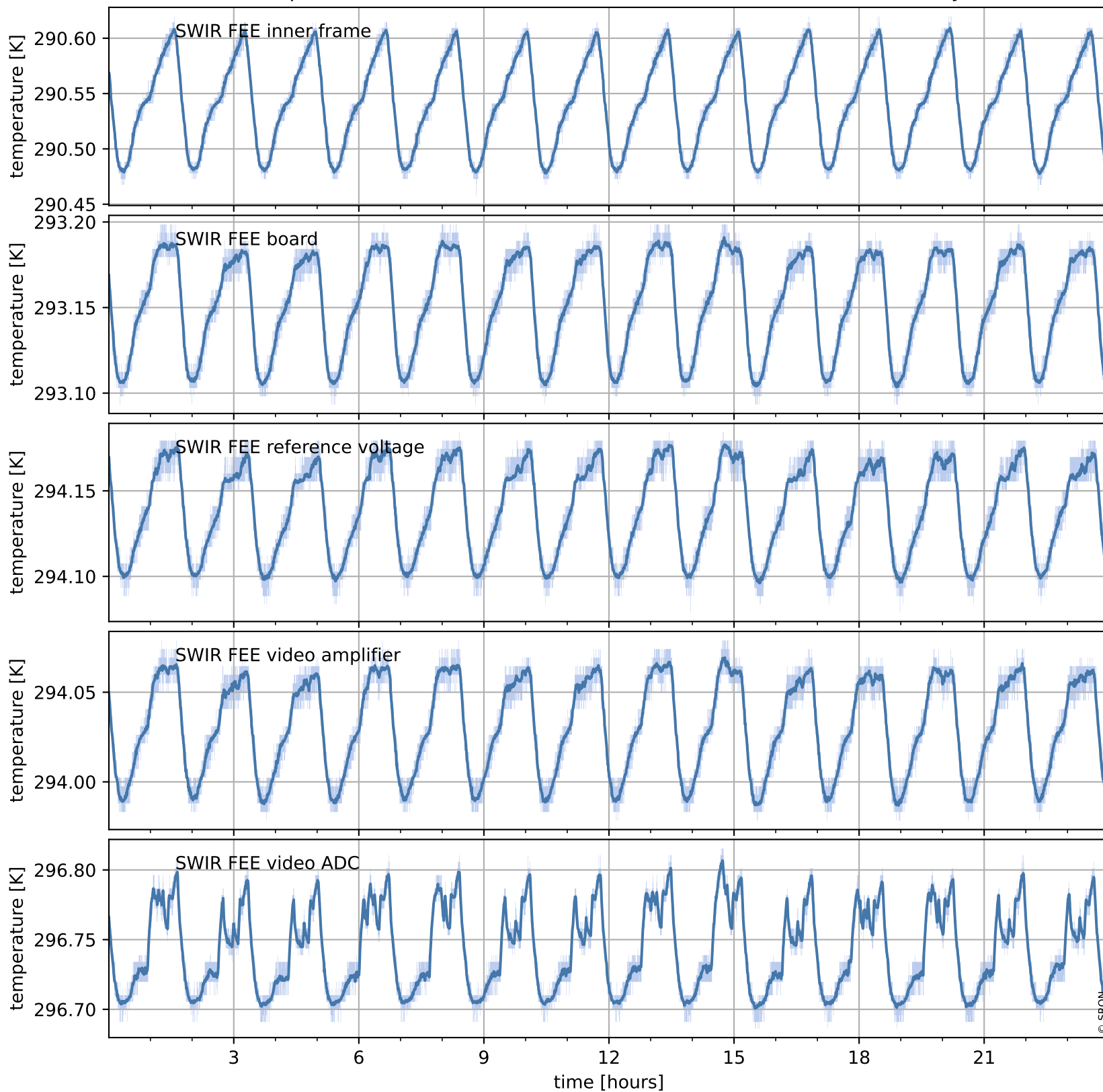
## Current and duty cycle of 3 heaters relevant for SWIR (last month)



# Tropomi SWIR housekeeping data

orbits : [25774, 25787]  
coverage : 2022-10-04 / 2022-10-05  
created : 2023-08-21T09:32:30

## Temperature of sensors at the SWIR front-end electronics (one day)



# Tropomi SWIR housekeeping data

orbits : [25303, 25787]  
coverage : 2022-08-31 / 2022-10-05  
created : 2023-08-21T09:32:31

## Temperature of sensors at the SWIR front-end electronics (last month)

