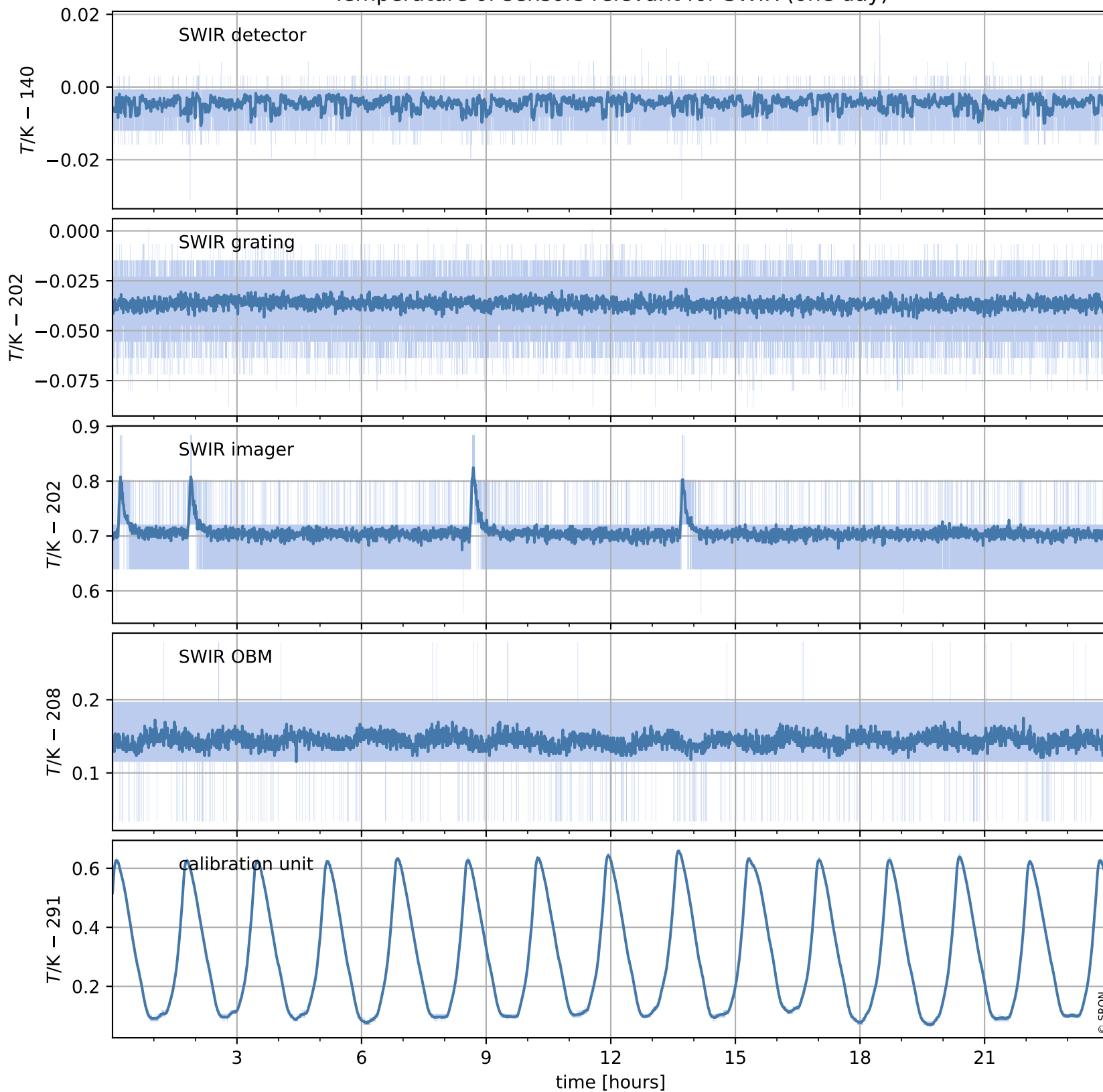


# Tropomi SWIR housekeeping data

orbits : [26043, 26057]  
coverage : 2022-10-23 / 2022-10-24  
created : 2023-08-21T09:33:13

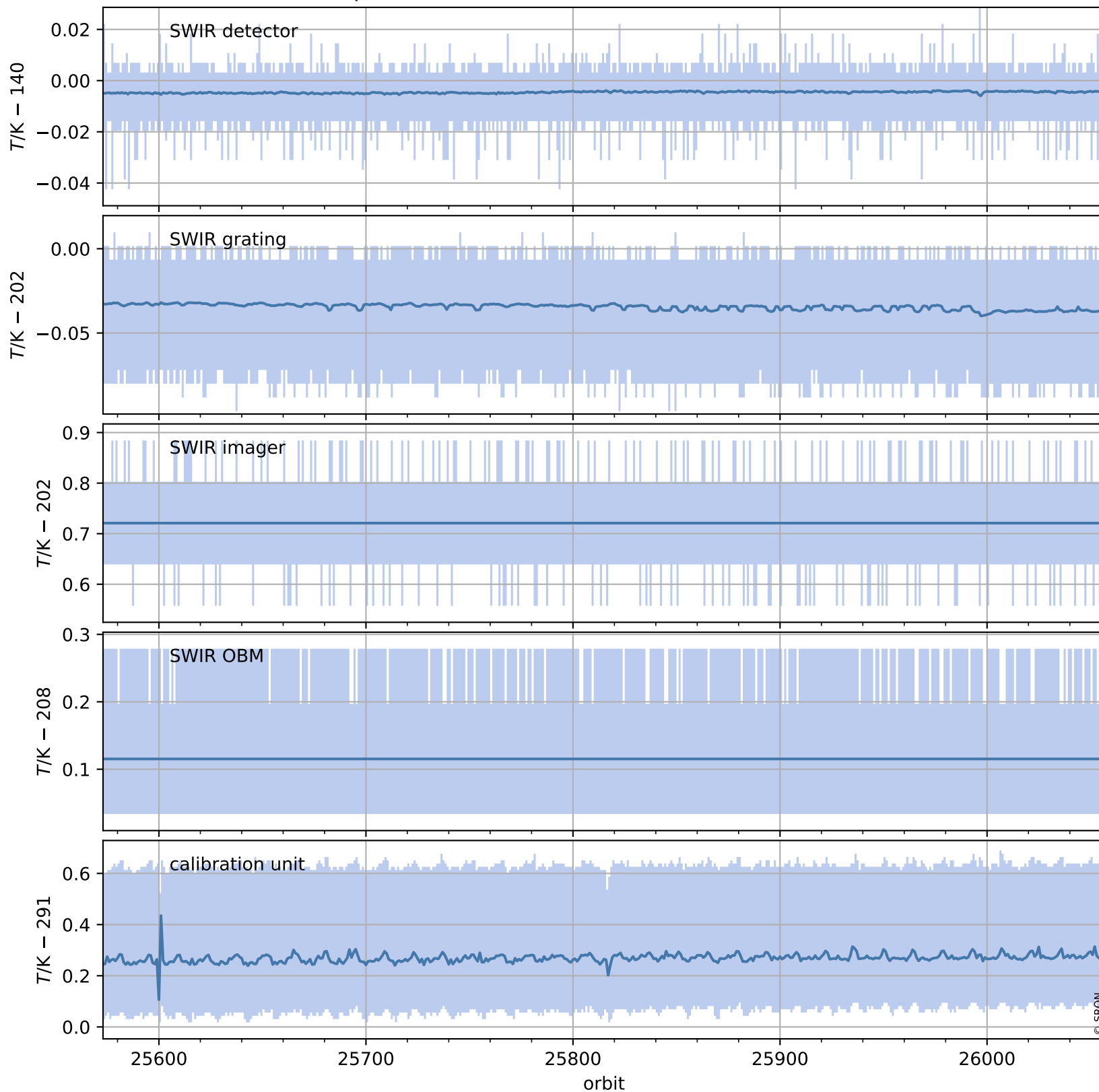
## Temperature of sensors relevant for SWIR (one day)



# Tropomi SWIR housekeeping data

orbits : [25573, 26057]  
coverage : 2022-09-19 / 2022-10-24  
created : 2023-08-21T09:33:13

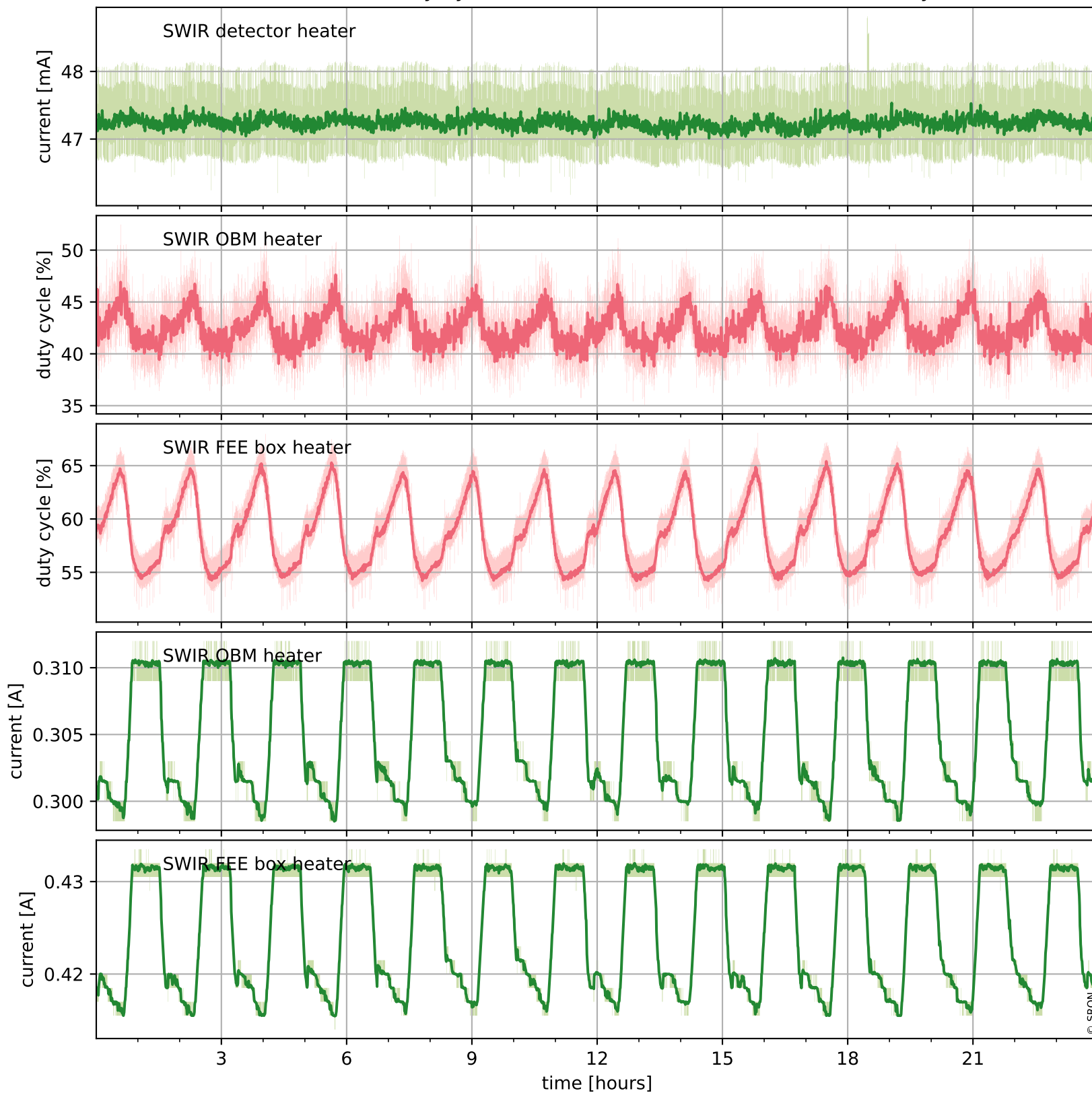
## Temperature of sensors relevant for SWIR (last month)



# Tropomi SWIR housekeeping data

orbits : [26043, 26057]  
coverage : 2022-10-23 / 2022-10-24  
created : 2023-08-21T09:33:13

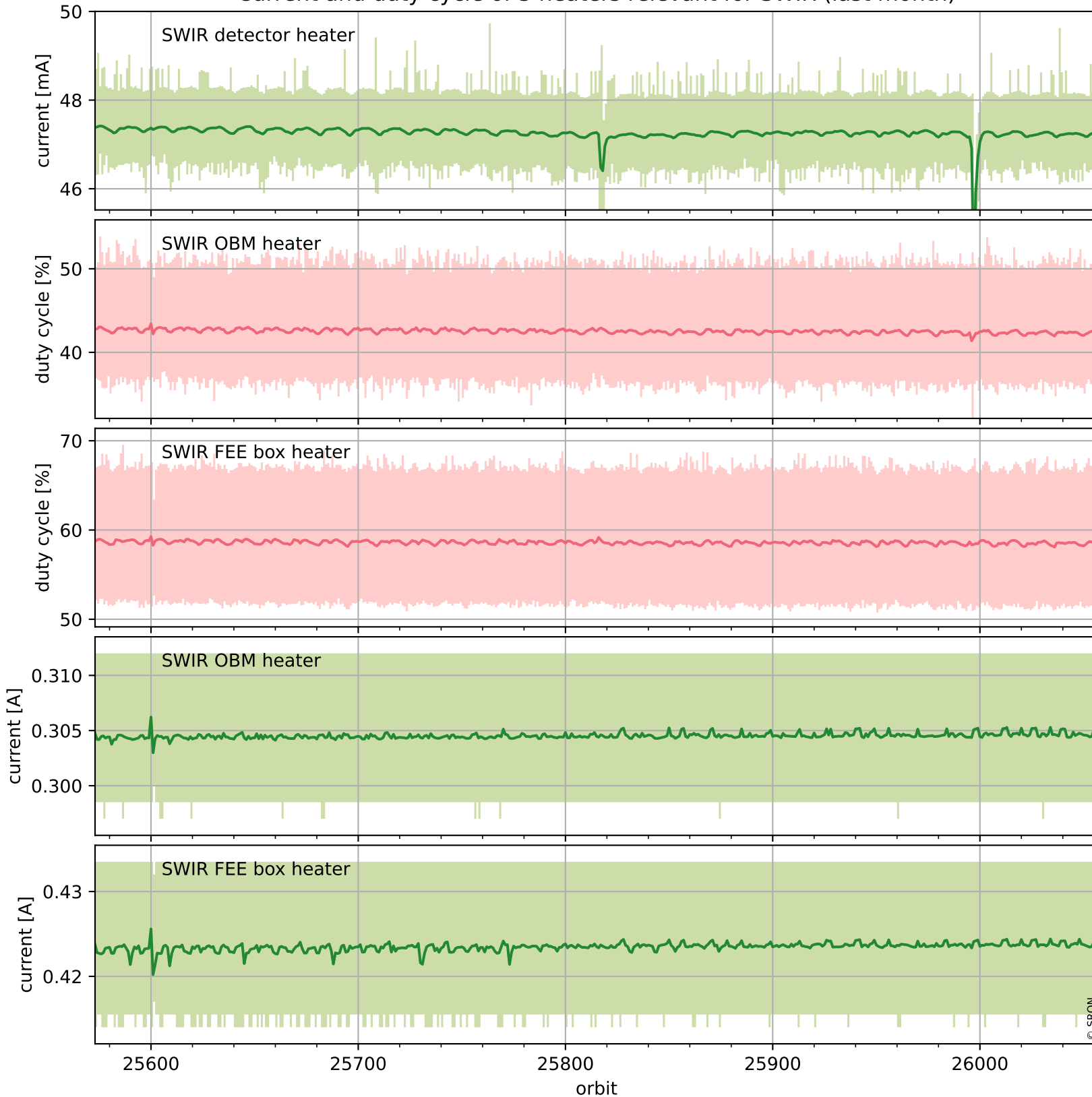
## Current and duty cycle of 3 heaters relevant for SWIR (one day)



# Tropomi SWIR housekeeping data

orbits : [25573, 26057]  
coverage : 2022-09-19 / 2022-10-24  
created : 2023-08-21T09:33:14

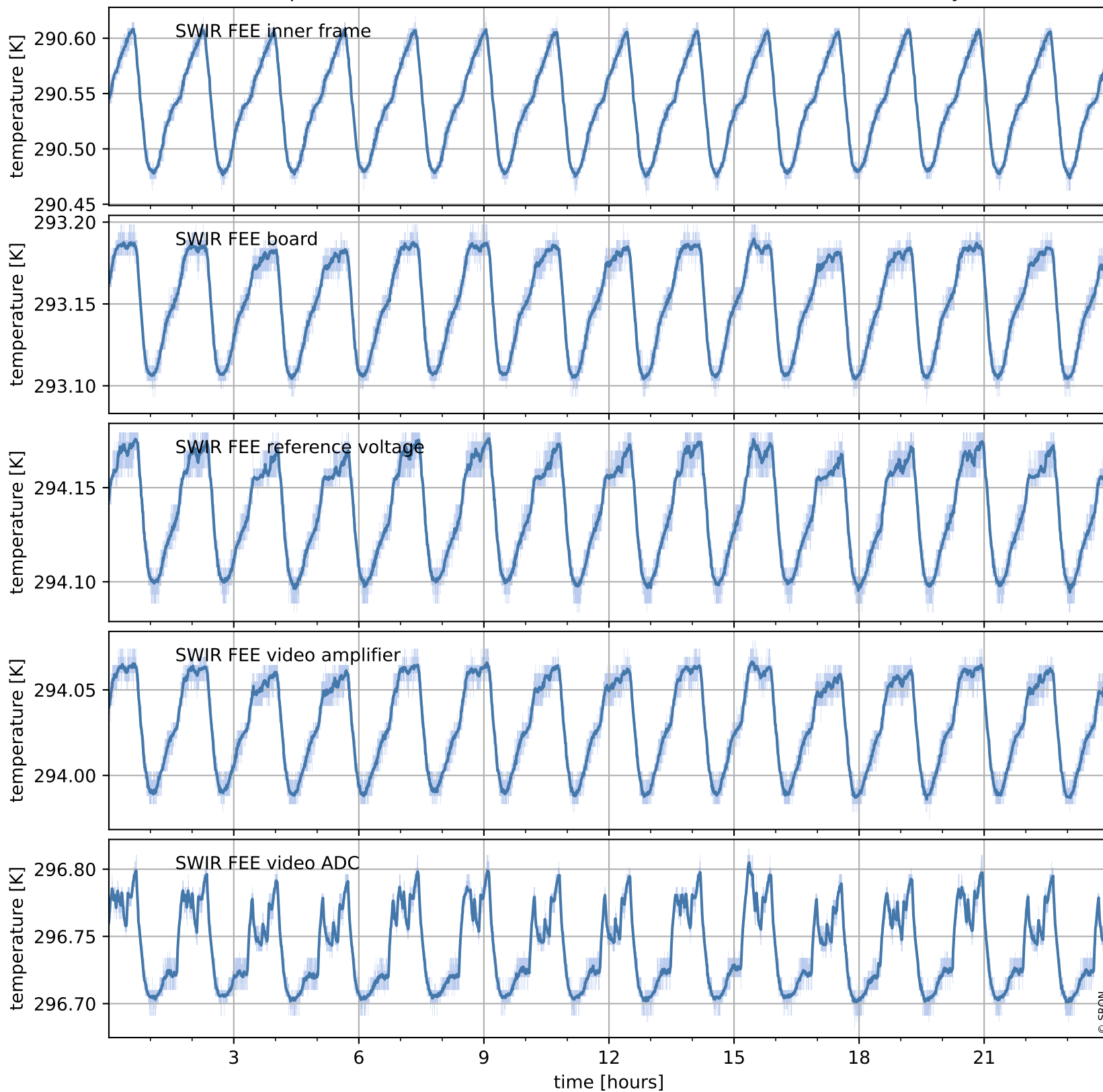
## Current and duty cycle of 3 heaters relevant for SWIR (last month)



# Tropomi SWIR housekeeping data

orbits : [26043, 26057]  
coverage : 2022-10-23 / 2022-10-24  
created : 2023-08-21T09:33:14

## Temperature of sensors at the SWIR front-end electronics (one day)



# Tropomi SWIR housekeeping data

orbits : [25573, 26057]  
coverage : 2022-09-19 / 2022-10-24  
created : 2023-08-21T09:33:14

## Temperature of sensors at the SWIR front-end electronics (last month)

