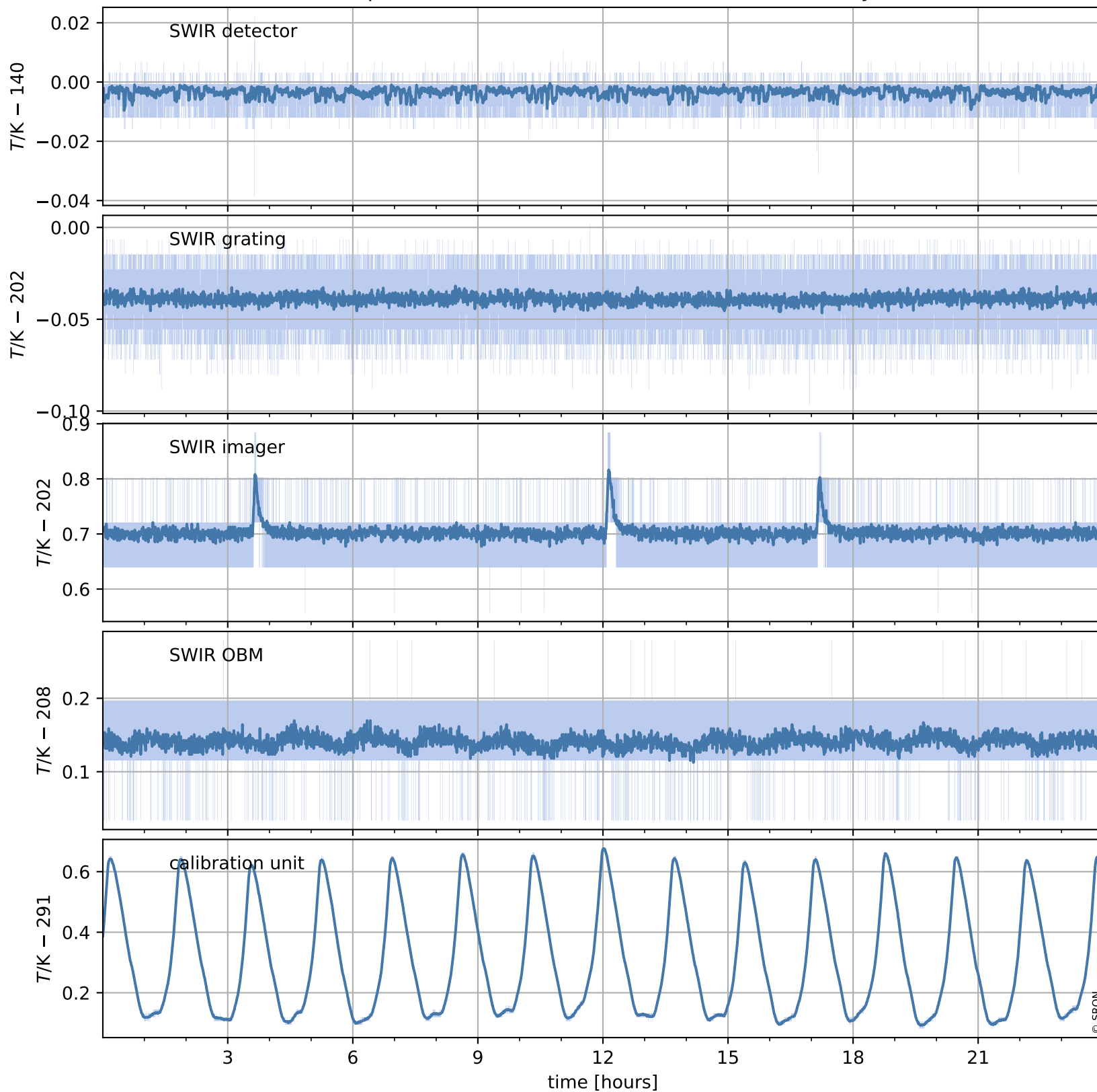


# Tropomi SWIR housekeeping data

orbits : [26341, 26354]  
coverage : 2022-11-13 / 2022-11-14  
created : 2023-08-21T09:34:01

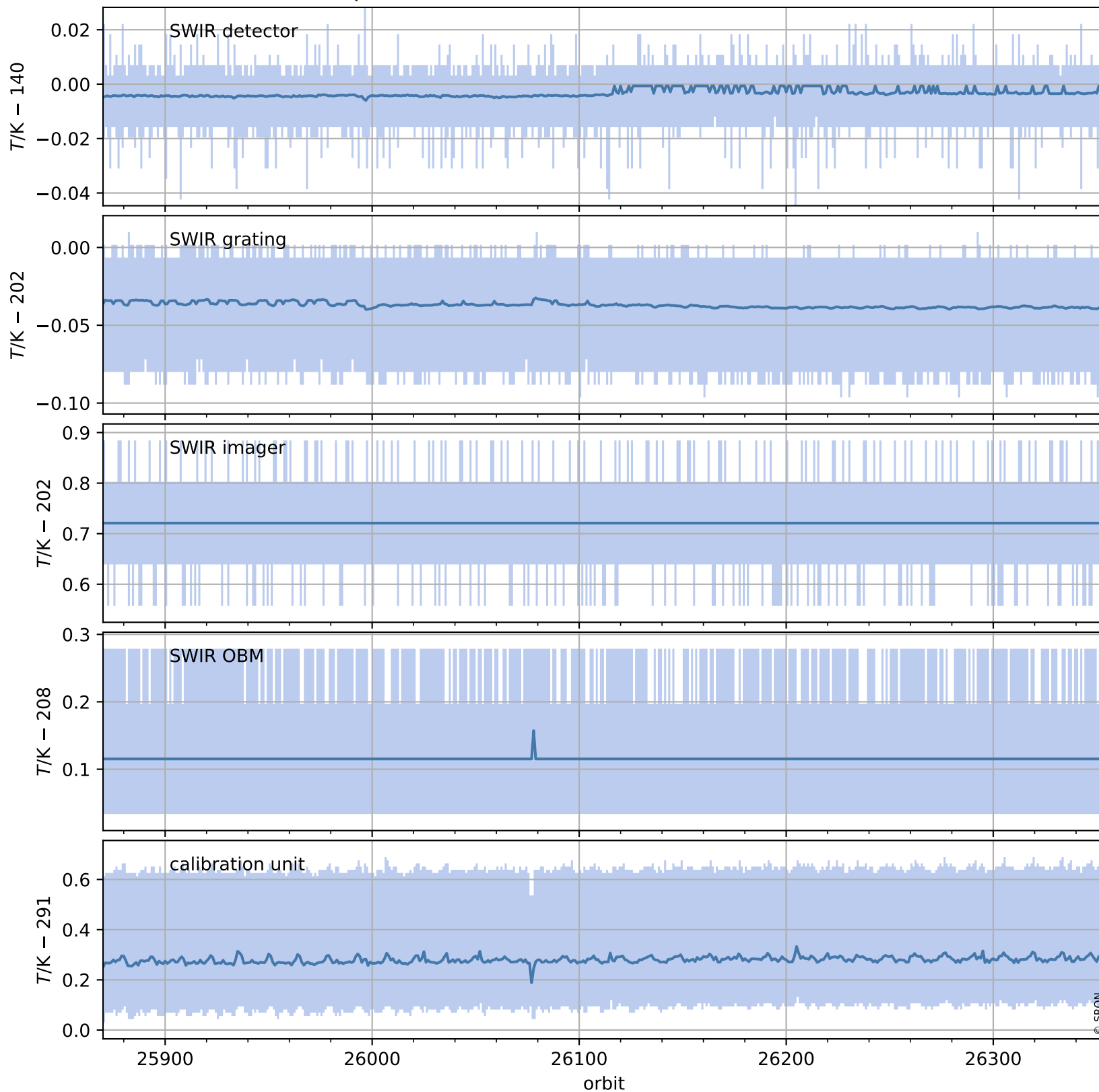
## Temperature of sensors relevant for SWIR (one day)



# Tropomi SWIR housekeeping data

orbits : [25870, 26354]  
coverage : 2022-10-10 / 2022-11-14  
created : 2023-08-21T09:34:01

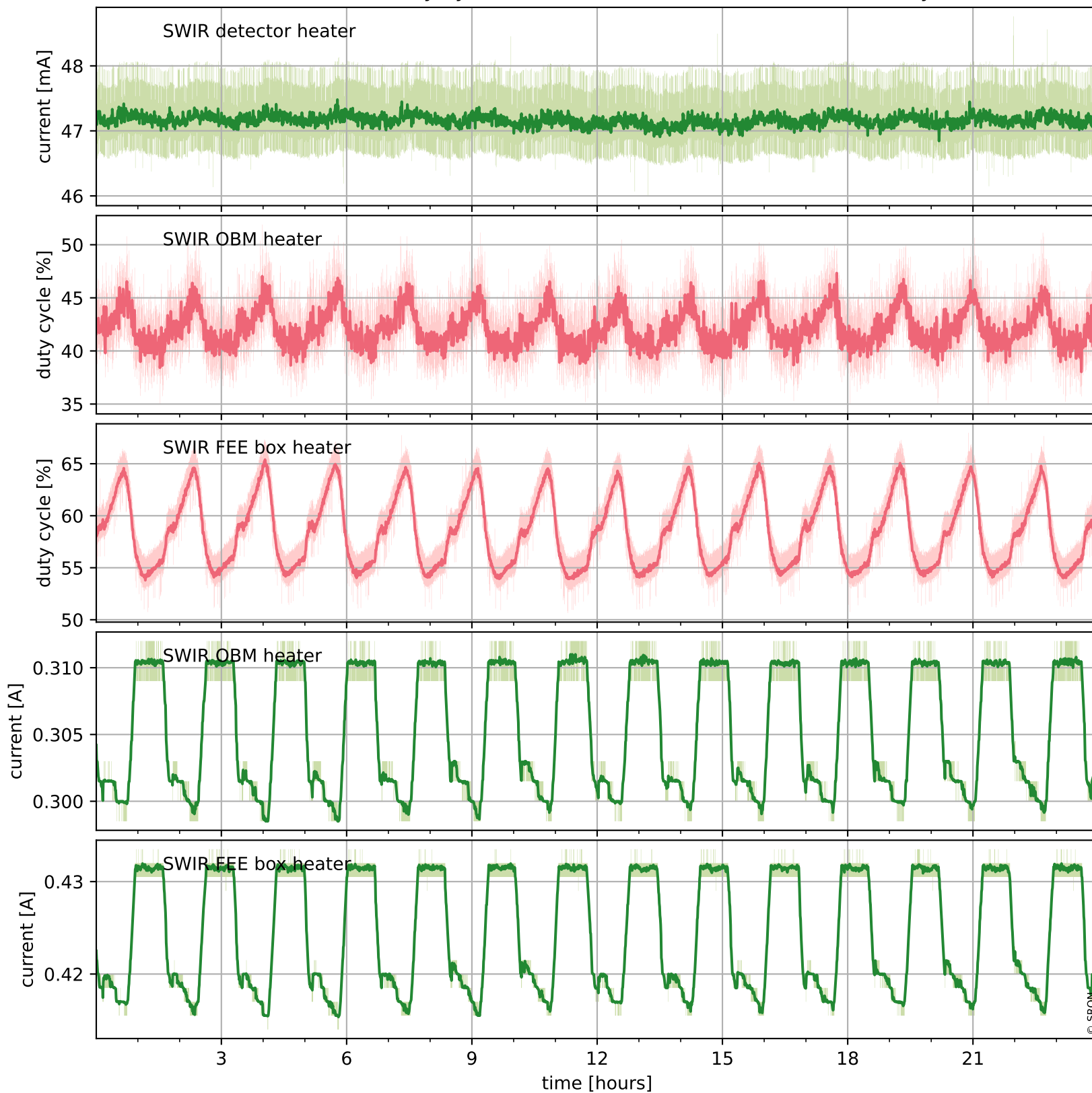
## Temperature of sensors relevant for SWIR (last month)



# Tropomi SWIR housekeeping data

orbits : [26341, 26354]  
coverage : 2022-11-13 / 2022-11-14  
created : 2023-08-21T09:34:02

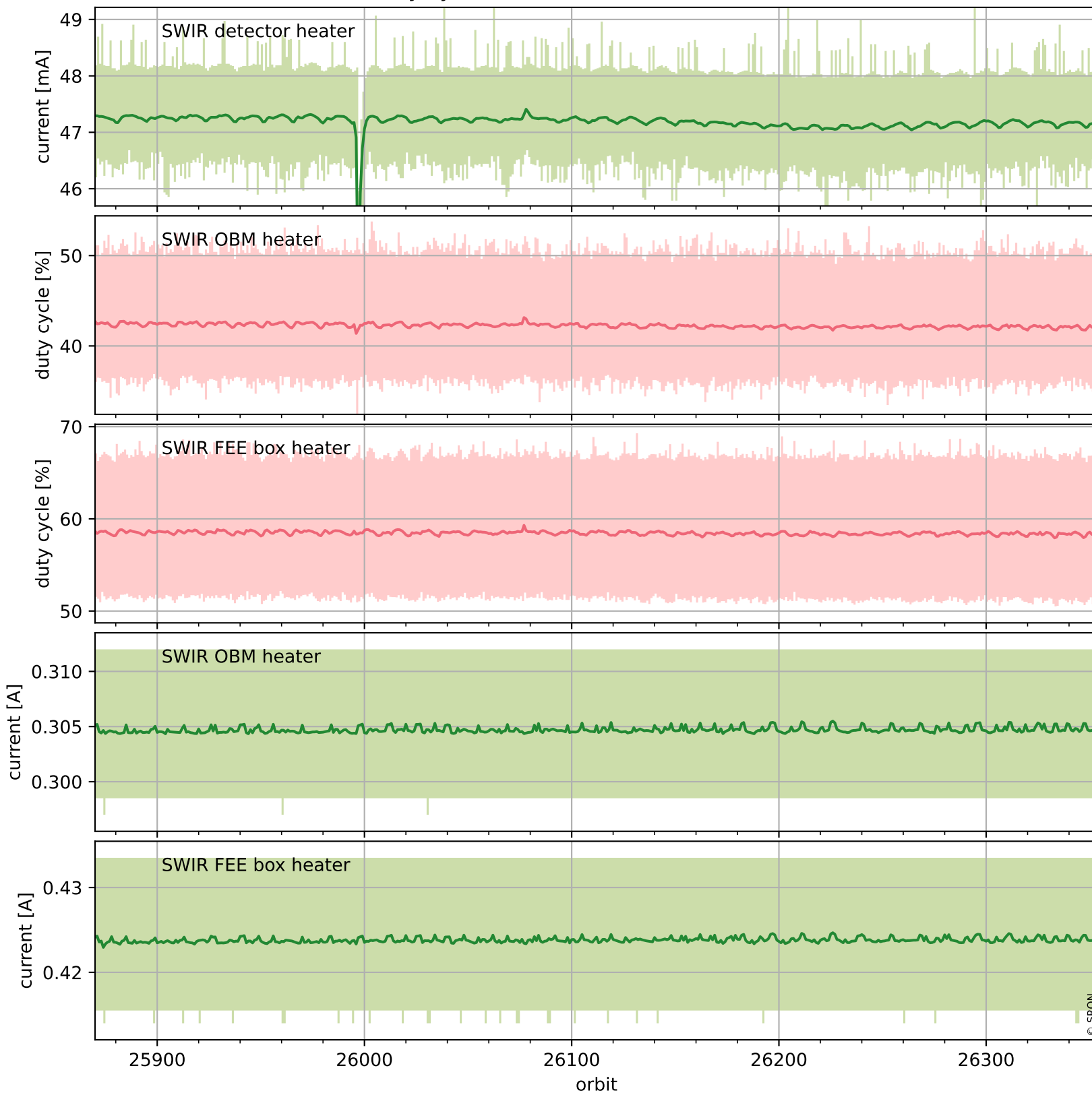
## Current and duty cycle of 3 heaters relevant for SWIR (one day)



# Tropomi SWIR housekeeping data

orbits : [25870, 26354]  
coverage : 2022-10-10 / 2022-11-14  
created : 2023-08-21T09:34:02

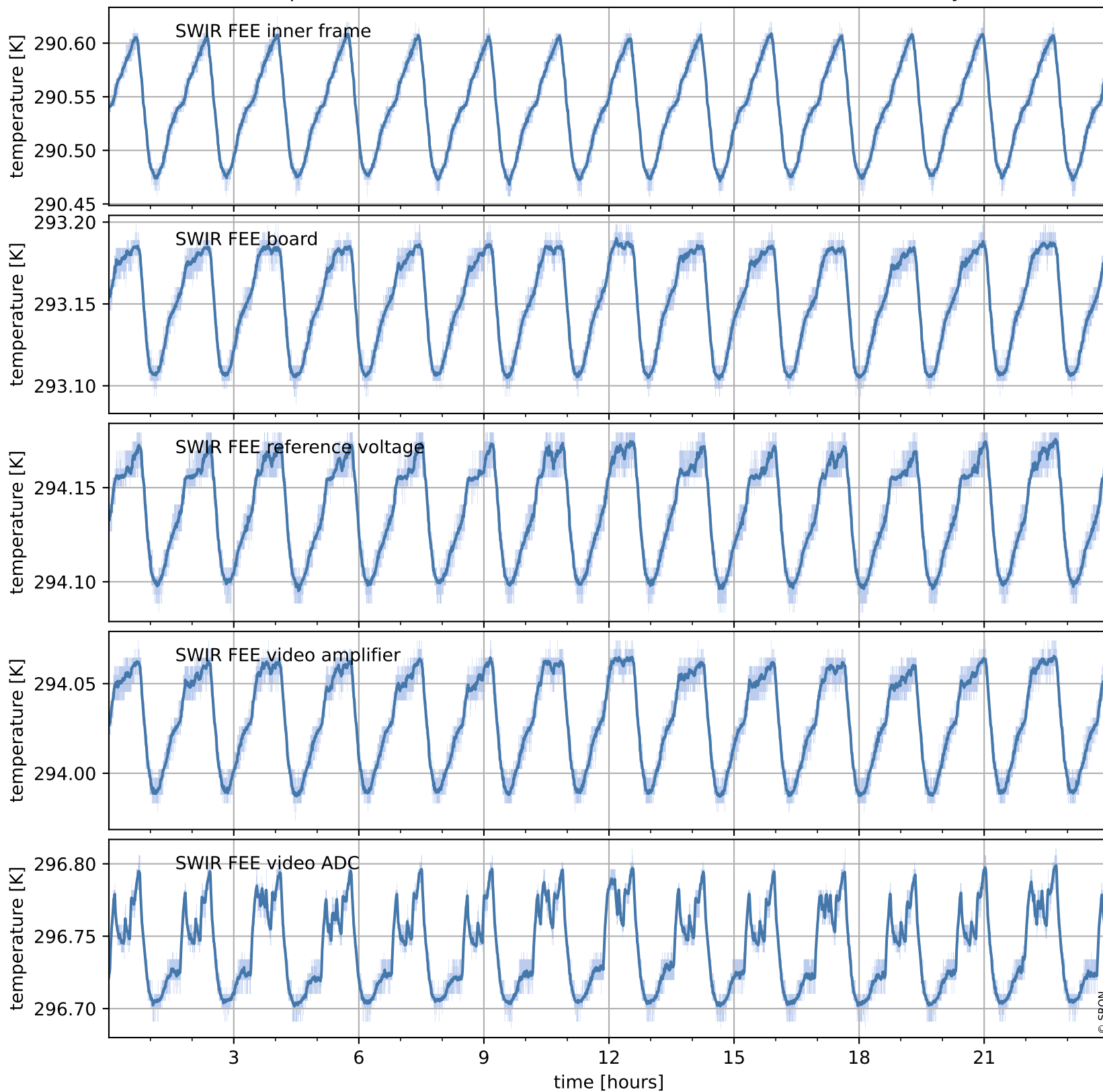
## Current and duty cycle of 3 heaters relevant for SWIR (last month)



# Tropomi SWIR housekeeping data

orbits : [26341, 26354]  
coverage : 2022-11-13 / 2022-11-14  
created : 2023-08-21T09:34:02

## Temperature of sensors at the SWIR front-end electronics (one day)



# Tropomi SWIR housekeeping data

orbits : [25870, 26354]  
coverage : 2022-10-10 / 2022-11-14  
created : 2023-08-21T09:34:03

## Temperature of sensors at the SWIR front-end electronics (last month)

