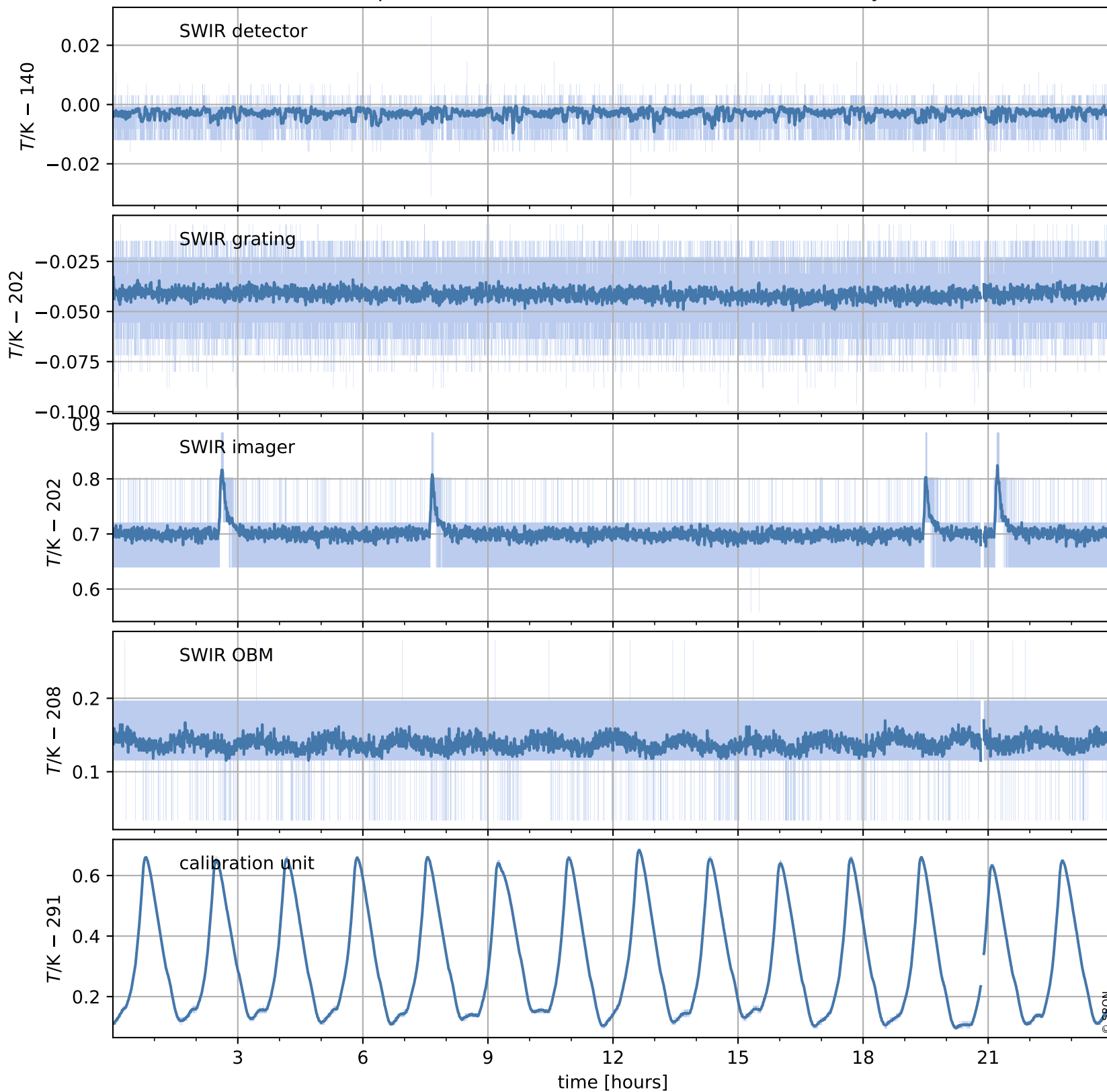


Tropomi SWIR housekeeping data

orbits : [26767, 26780]
coverage : 2022-12-13 / 2022-12-14
created : 2023-08-21T09:35:11

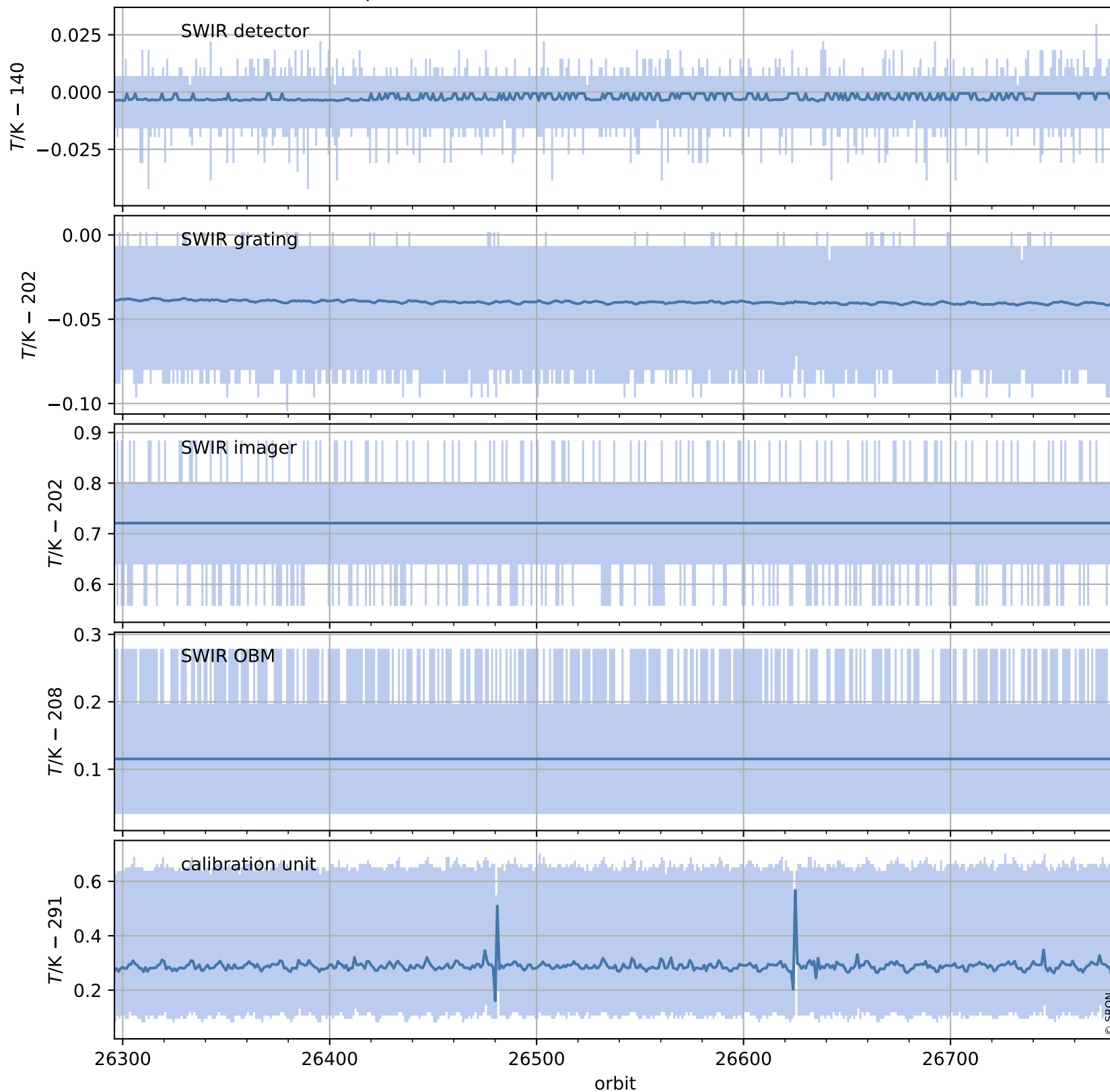
Temperature of sensors relevant for SWIR (one day)



Tropomi SWIR housekeeping data

orbits : [26296, 26780]
coverage : 2022-11-09 / 2022-12-14
created : 2023-08-21T09:35:11

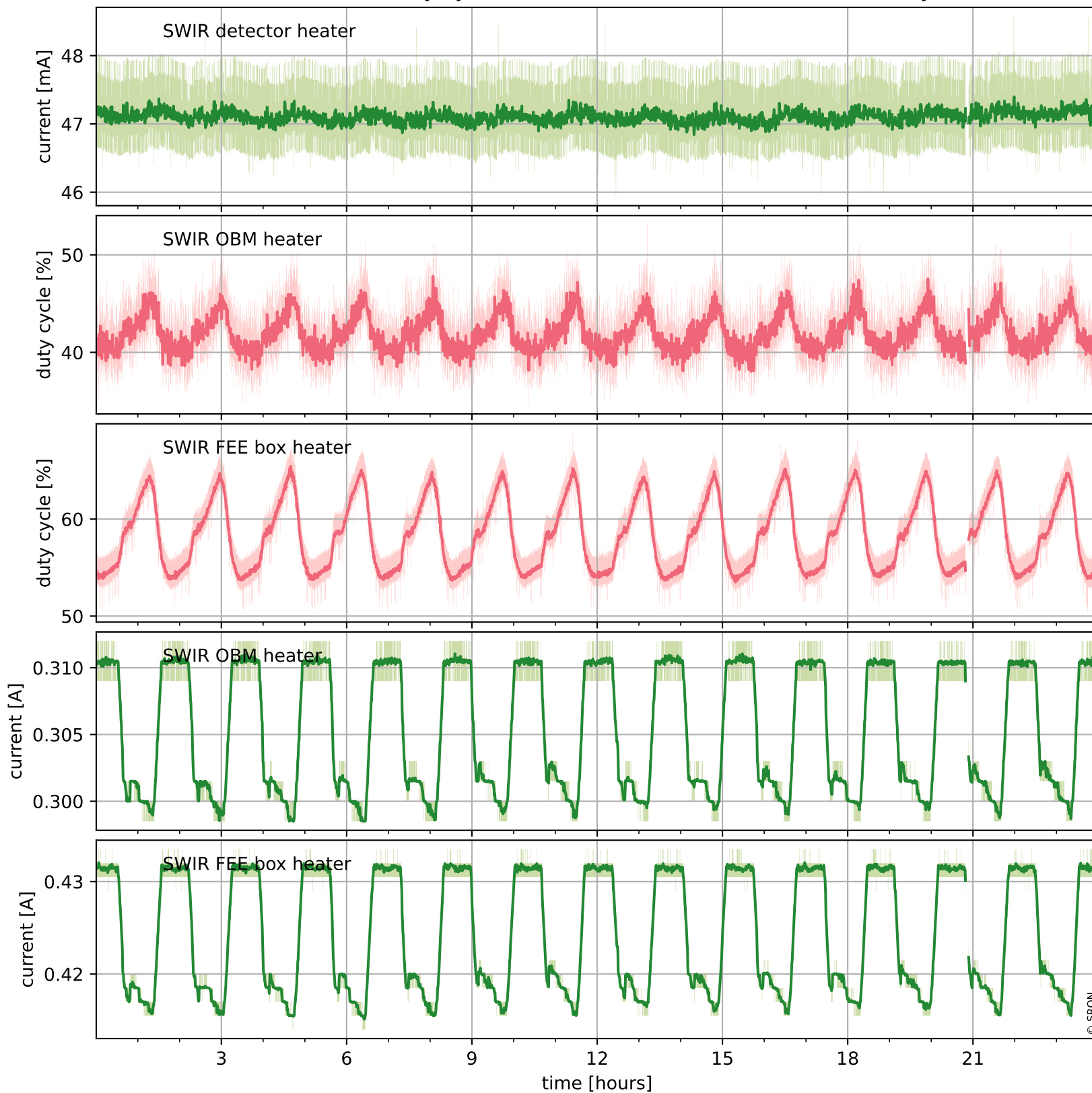
Temperature of sensors relevant for SWIR (last month)



Tropomi SWIR housekeeping data

orbits : [26767, 26780]
coverage : 2022-12-13 / 2022-12-14
created : 2023-08-21T09:35:11

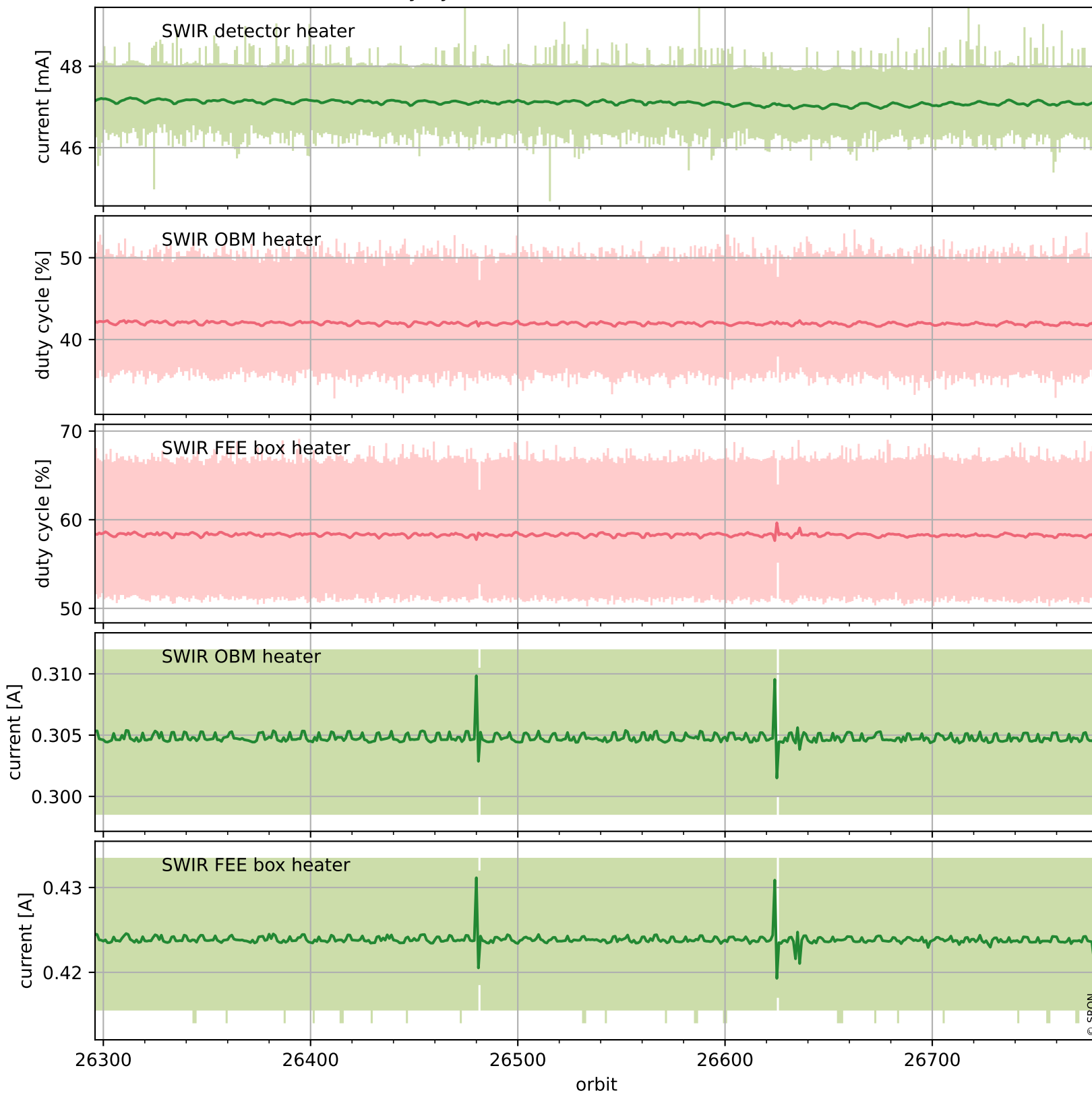
Current and duty cycle of 3 heaters relevant for SWIR (one day)



Tropomi SWIR housekeeping data

orbits : [26296, 26780]
coverage : 2022-11-09 / 2022-12-14
created : 2023-08-21T09:35:12

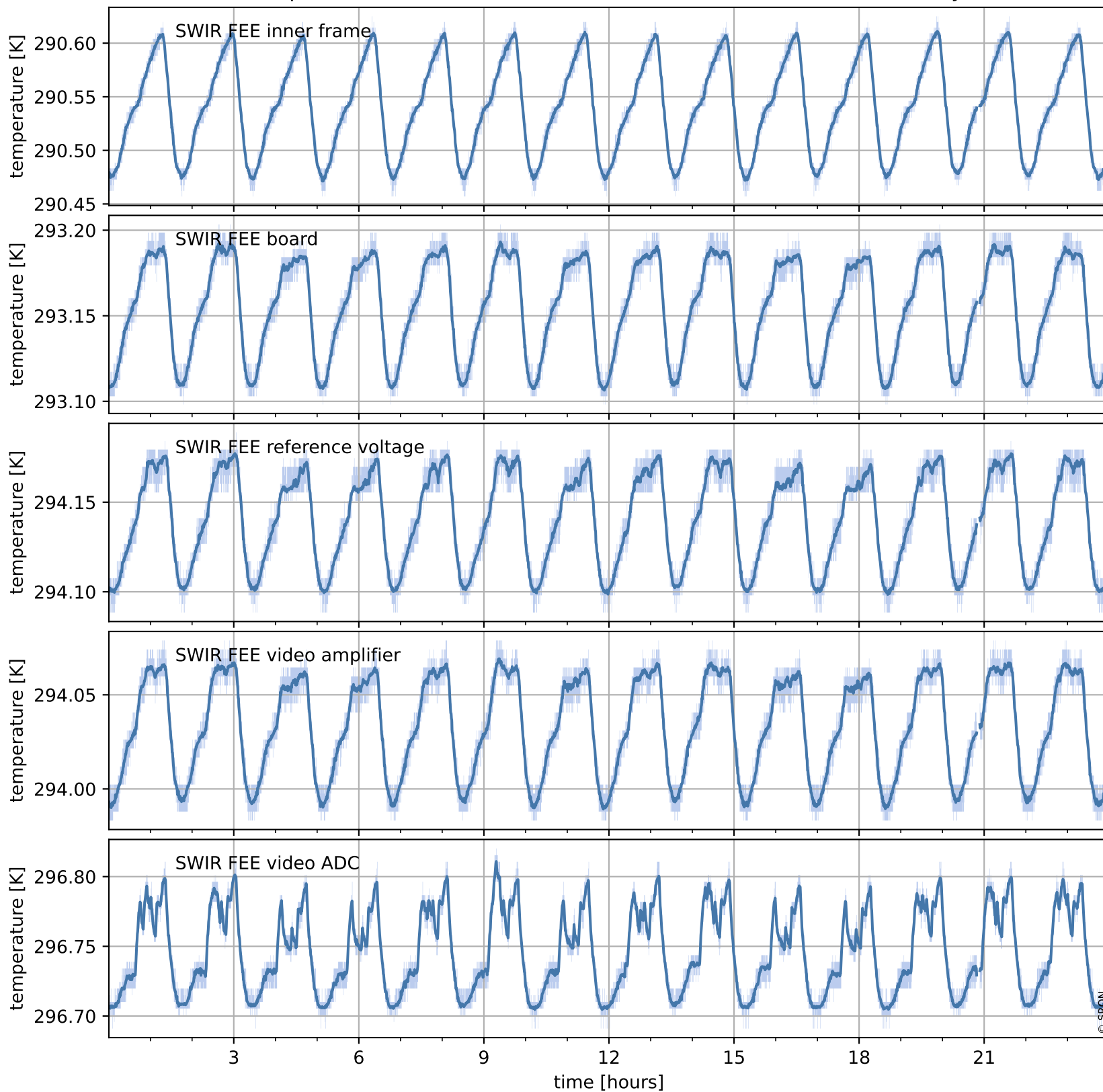
Current and duty cycle of 3 heaters relevant for SWIR (last month)



Tropomi SWIR housekeeping data

orbits : [26767, 26780]
coverage : 2022-12-13 / 2022-12-14
created : 2023-08-21T09:35:12

Temperature of sensors at the SWIR front-end electronics (one day)



Tropomi SWIR housekeeping data

orbits : [26296, 26780]
coverage : 2022-11-09 / 2022-12-14
created : 2023-08-21T09:35:12

Temperature of sensors at the SWIR front-end electronics (last month)

