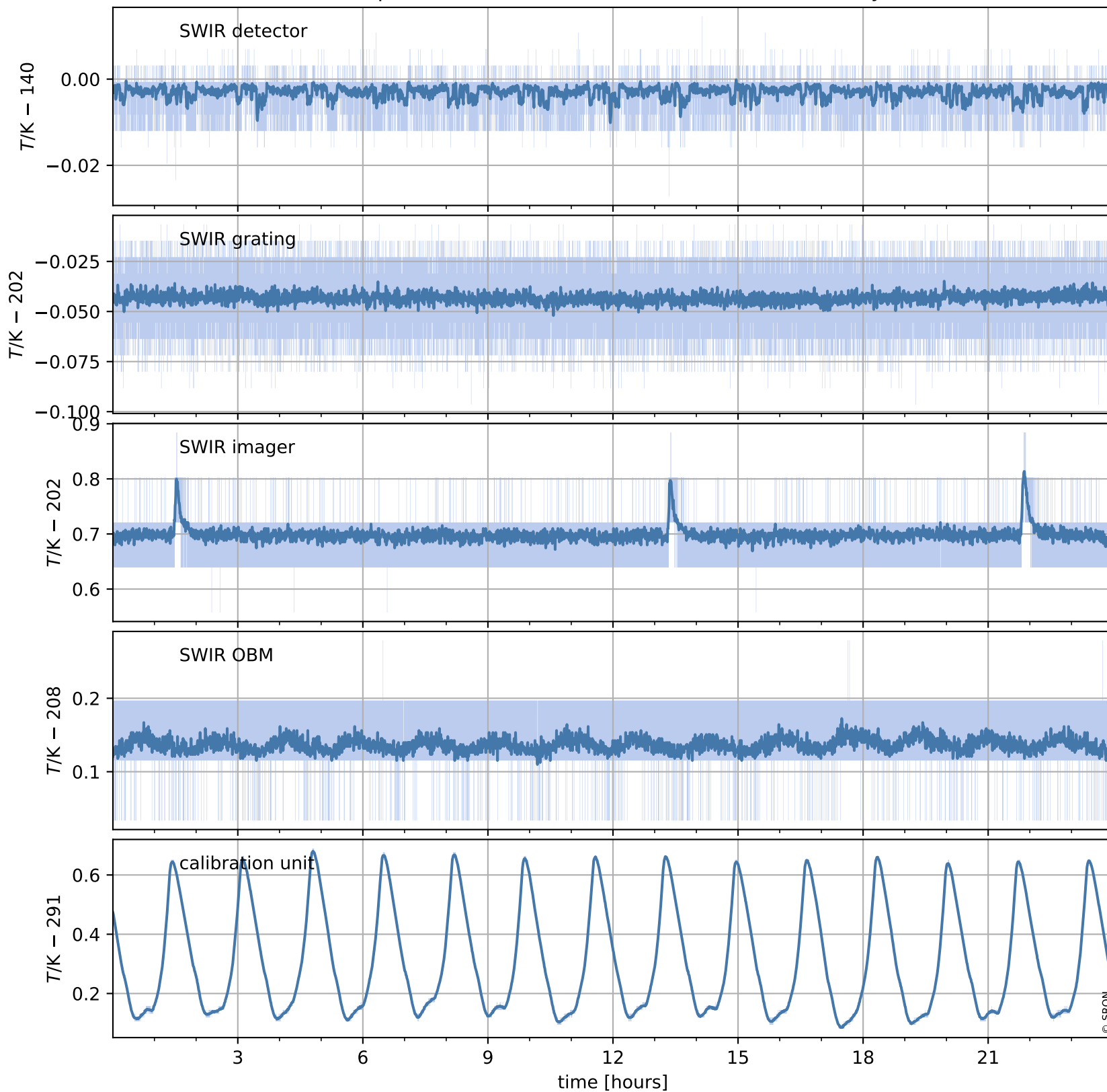


Tropomi SWIR housekeeping data

orbits : [26966, 26979]
coverage : 2022-12-27 / 2022-12-28
created : 2023-08-21T09:35:43

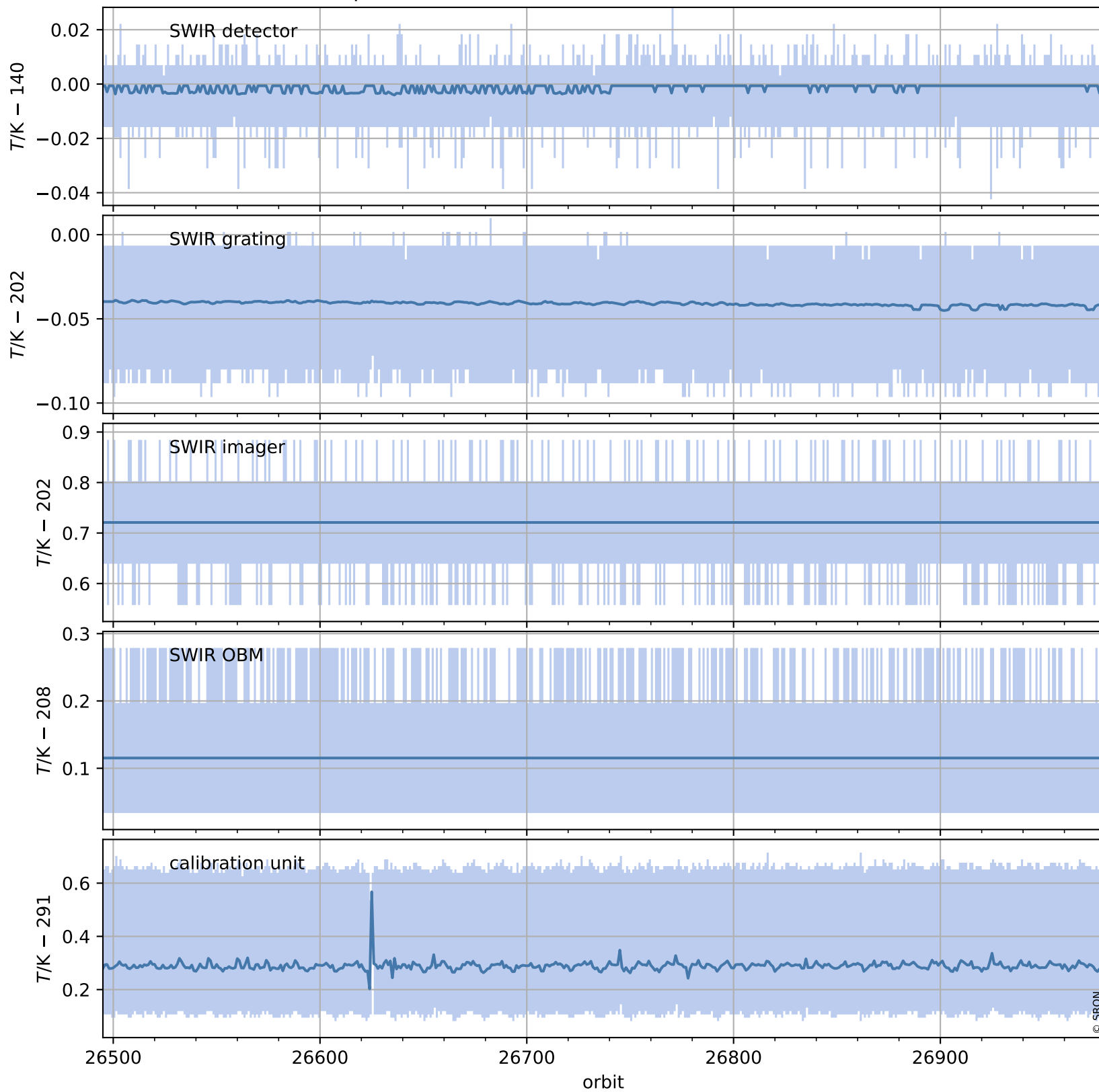
Temperature of sensors relevant for SWIR (one day)



Tropomi SWIR housekeeping data

orbits : [26495, 26979]
coverage : 2022-11-23 / 2022-12-28
created : 2023-08-21T09:35:43

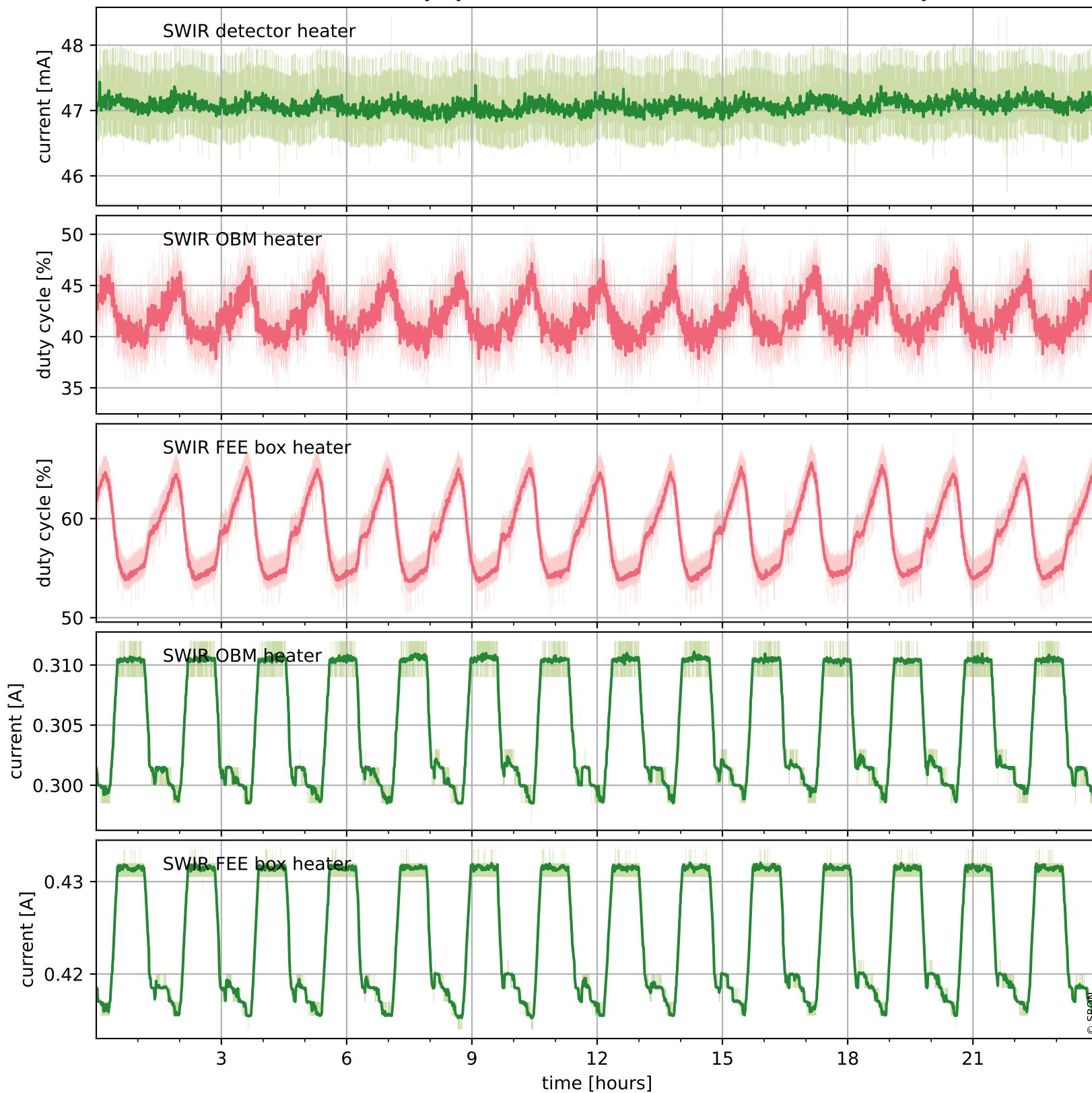
Temperature of sensors relevant for SWIR (last month)



Tropomi SWIR housekeeping data

orbits : [26966, 26979]
coverage : 2022-12-27 / 2022-12-28
created : 2023-08-21T09:35:44

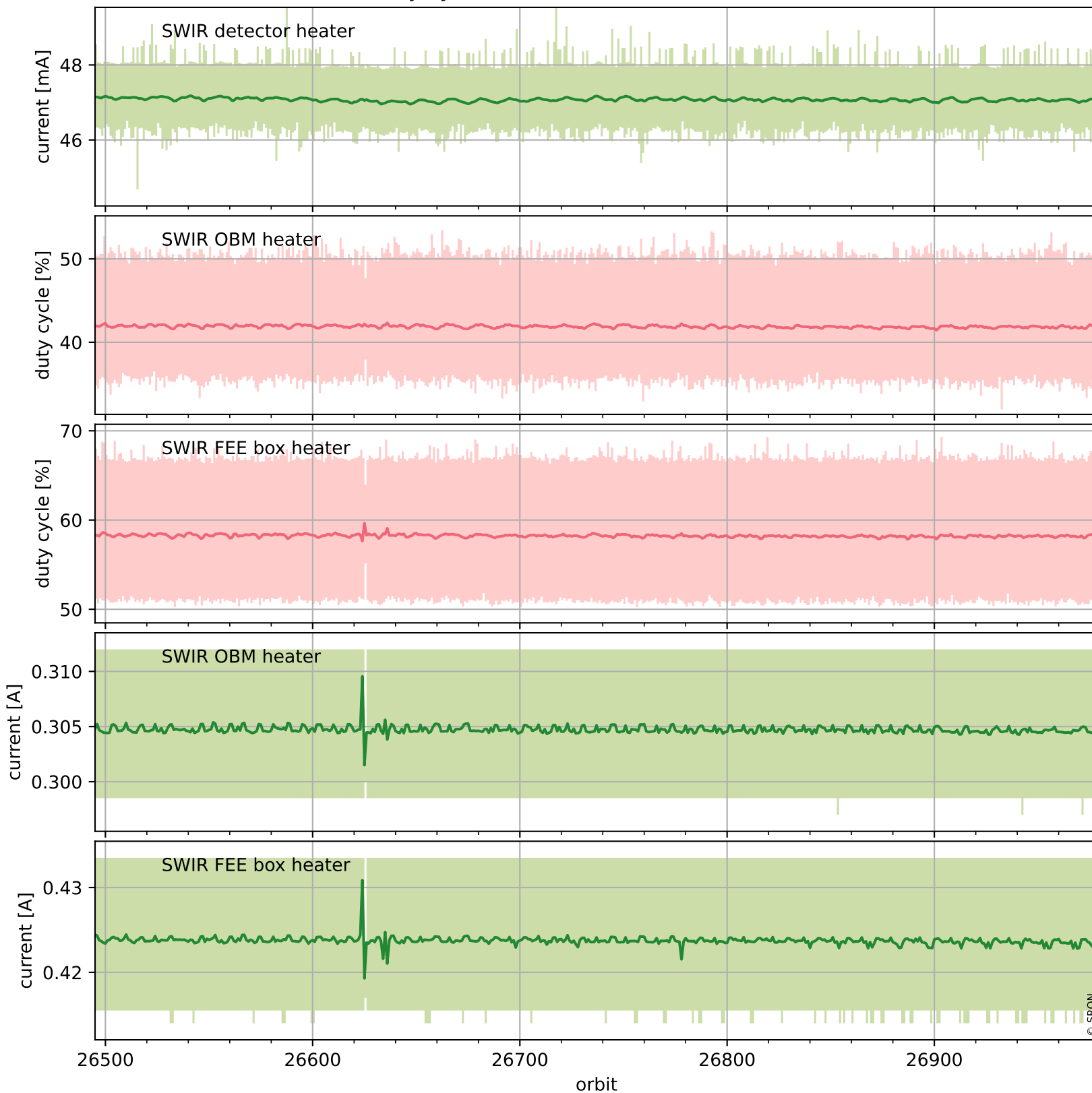
Current and duty cycle of 3 heaters relevant for SWIR (one day)



Tropomi SWIR housekeeping data

orbits : [26495, 26979]
coverage : 2022-11-23 / 2022-12-28
created : 2023-08-21T09:35:44

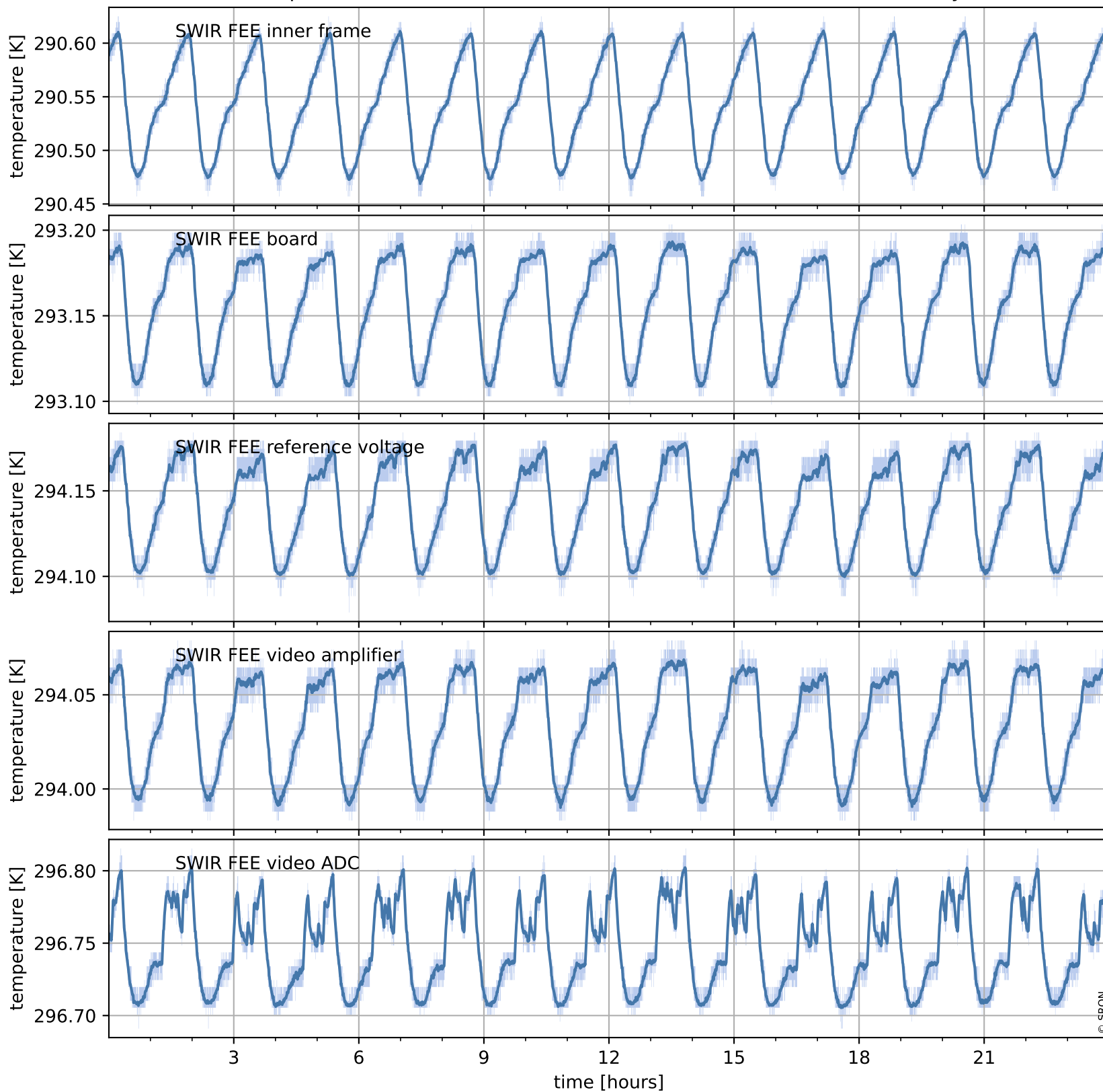
Current and duty cycle of 3 heaters relevant for SWIR (last month)



Tropomi SWIR housekeeping data

orbits : [26966, 26979]
coverage : 2022-12-27 / 2022-12-28
created : 2023-08-21T09:35:44

Temperature of sensors at the SWIR front-end electronics (one day)



Tropomi SWIR housekeeping data

orbits : [26495, 26979]
coverage : 2022-11-23 / 2022-12-28
created : 2023-08-21T09:35:45

Temperature of sensors at the SWIR front-end electronics (last month)

