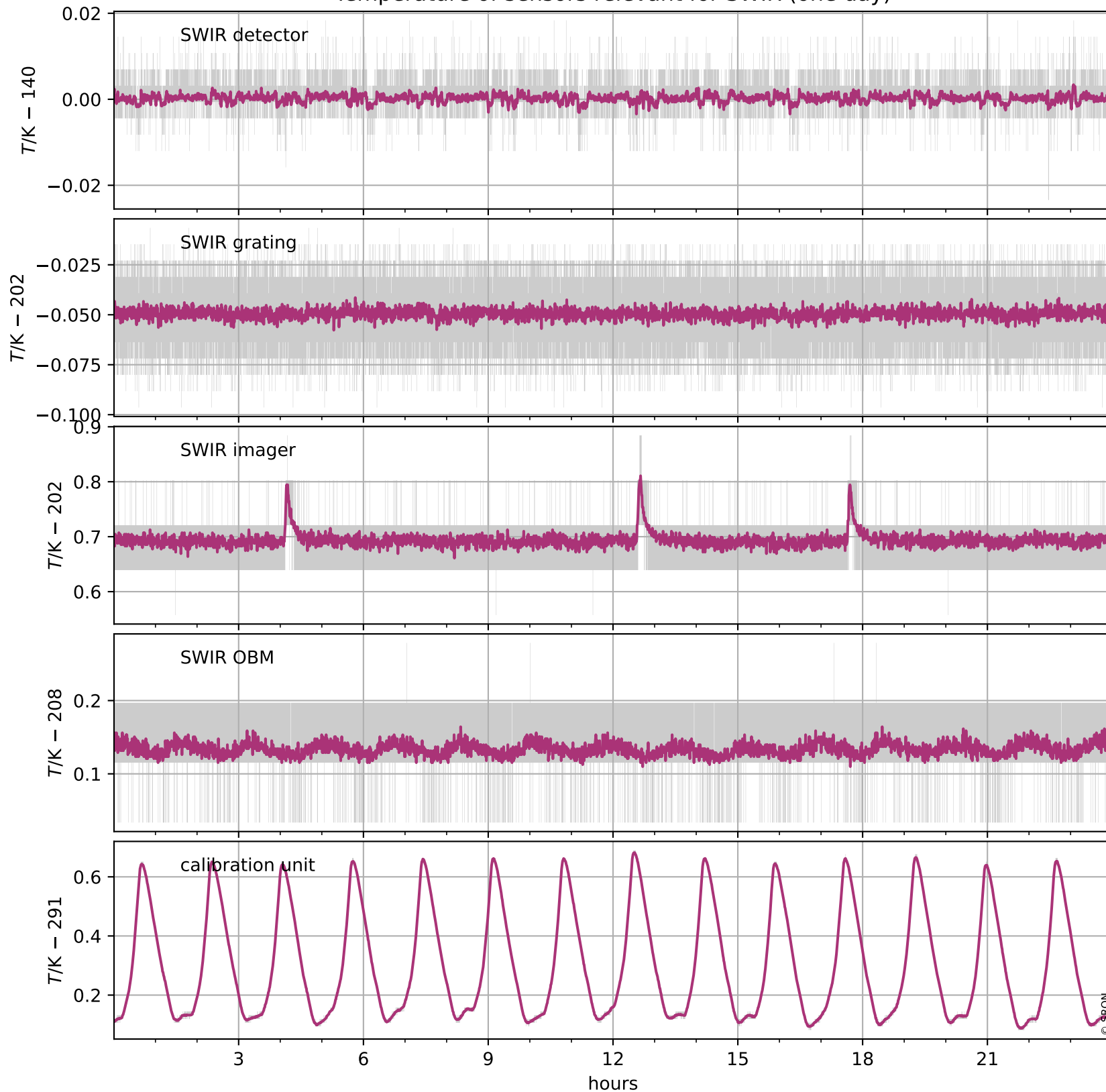


# Tropomi SWIR housekeeping data

orbits: [32371, 32384]  
coverage: 2024-01-12 / 2024-01-13  
created: 2024-01-13T05:21:07Z

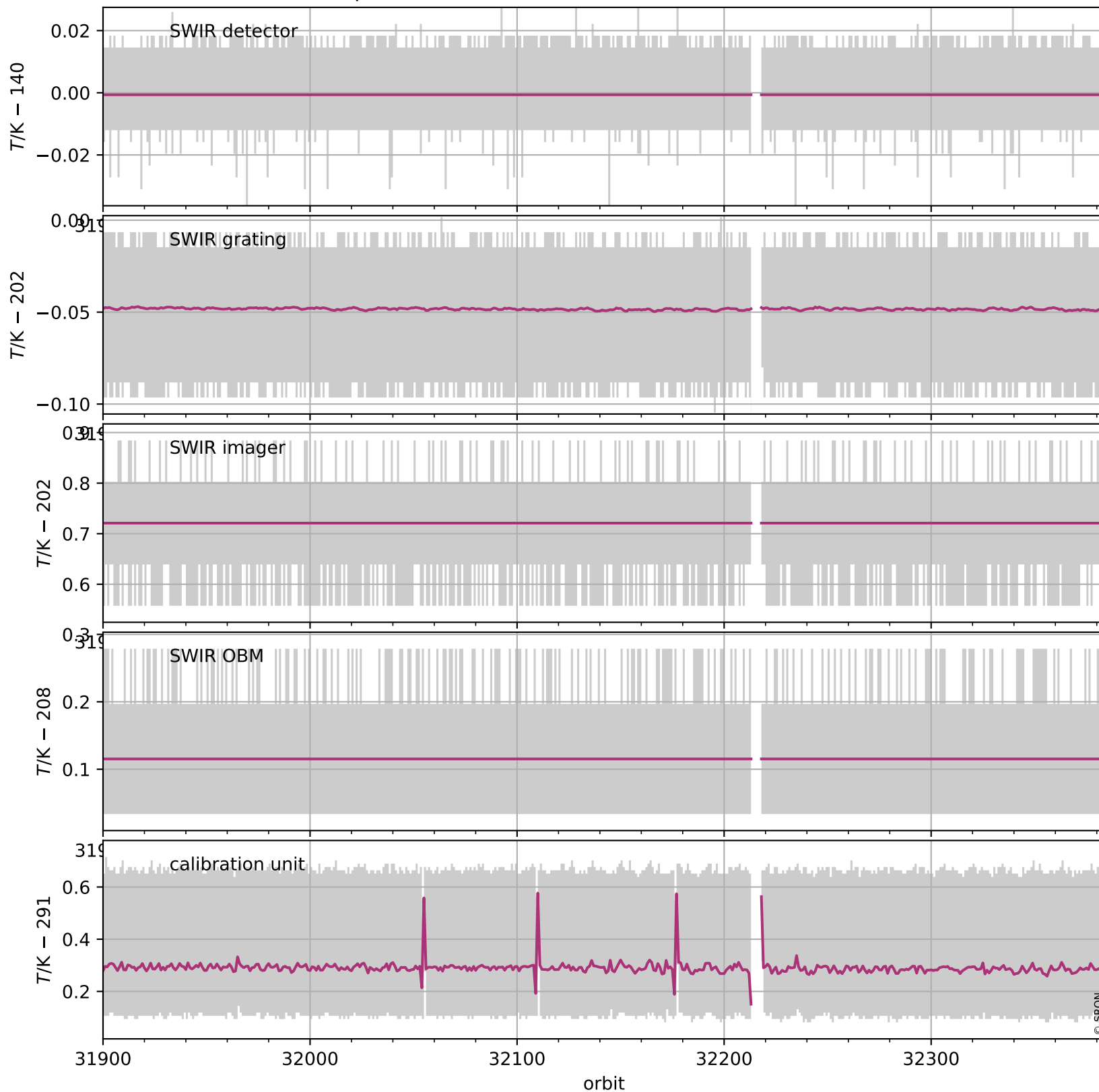
## Temperature of sensors relevant for SWIR (one day)



# Tropomi SWIR housekeeping data

orbits: [31900, 32384]  
coverage: 2023-12-09 / 2024-01-13  
created: 2024-01-13T05:21:07Z

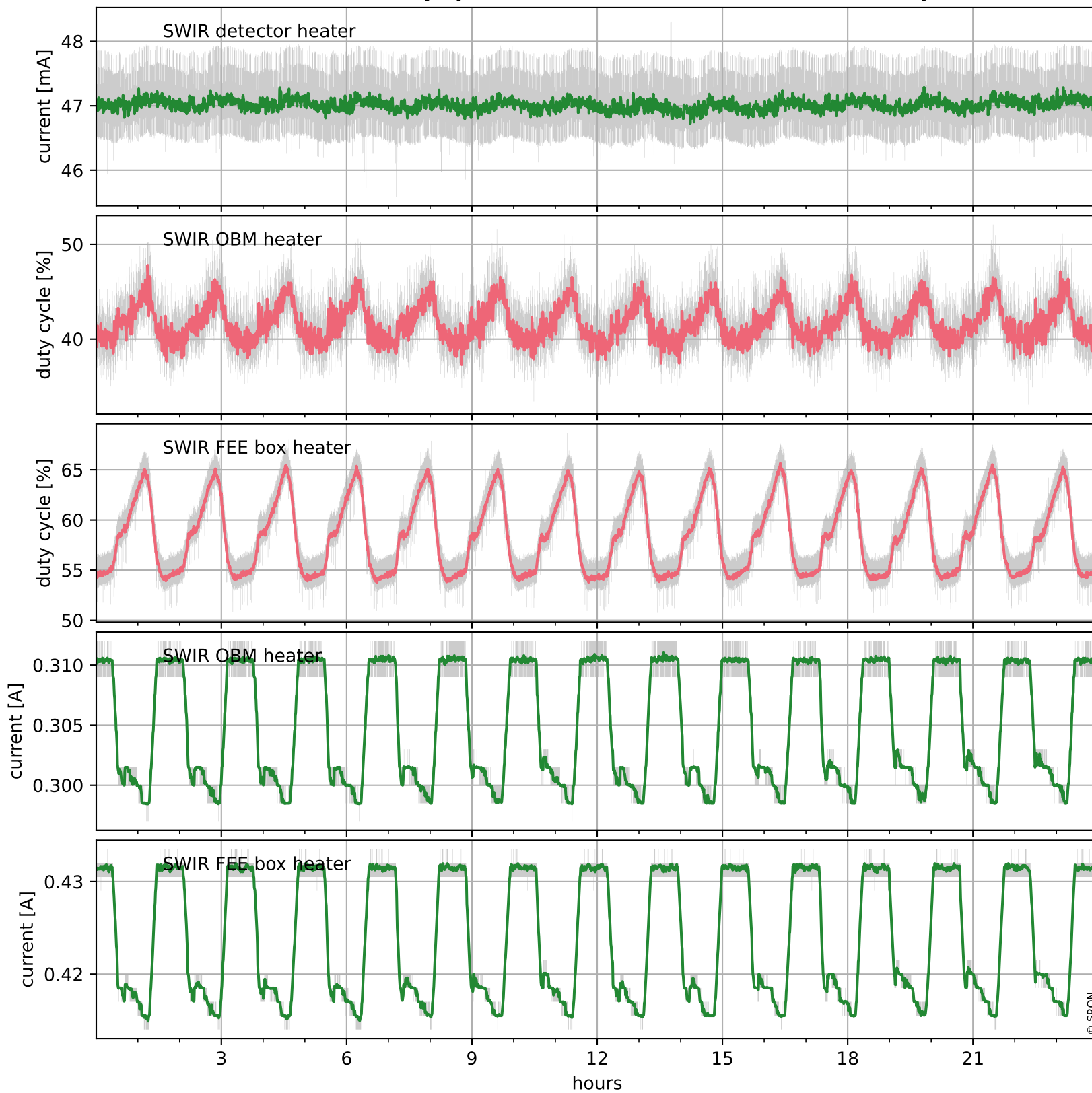
## Temperature of sensors relevant for SWIR (five weeks)



# Tropomi SWIR housekeeping data

orbits: [32371, 32384]  
coverage: 2024-01-12 / 2024-01-13  
created: 2024-01-13T05:21:08Z

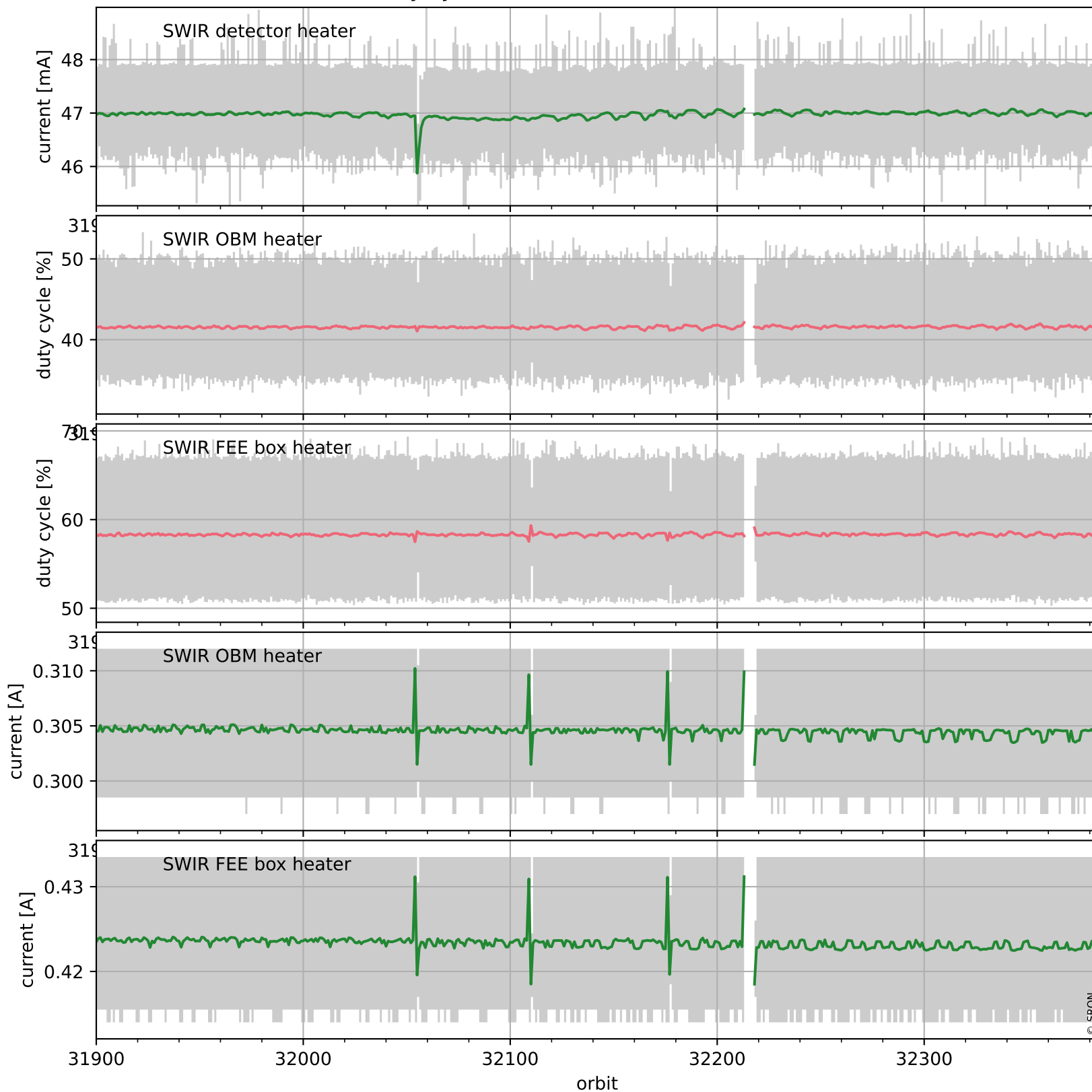
## Current and duty cycle of 3 heaters relevant for SWIR (one day)



# Tropomi SWIR housekeeping data

orbits: [31900, 32384]  
coverage: 2023-12-09 / 2024-01-13  
created: 2024-01-13T05:21:08Z

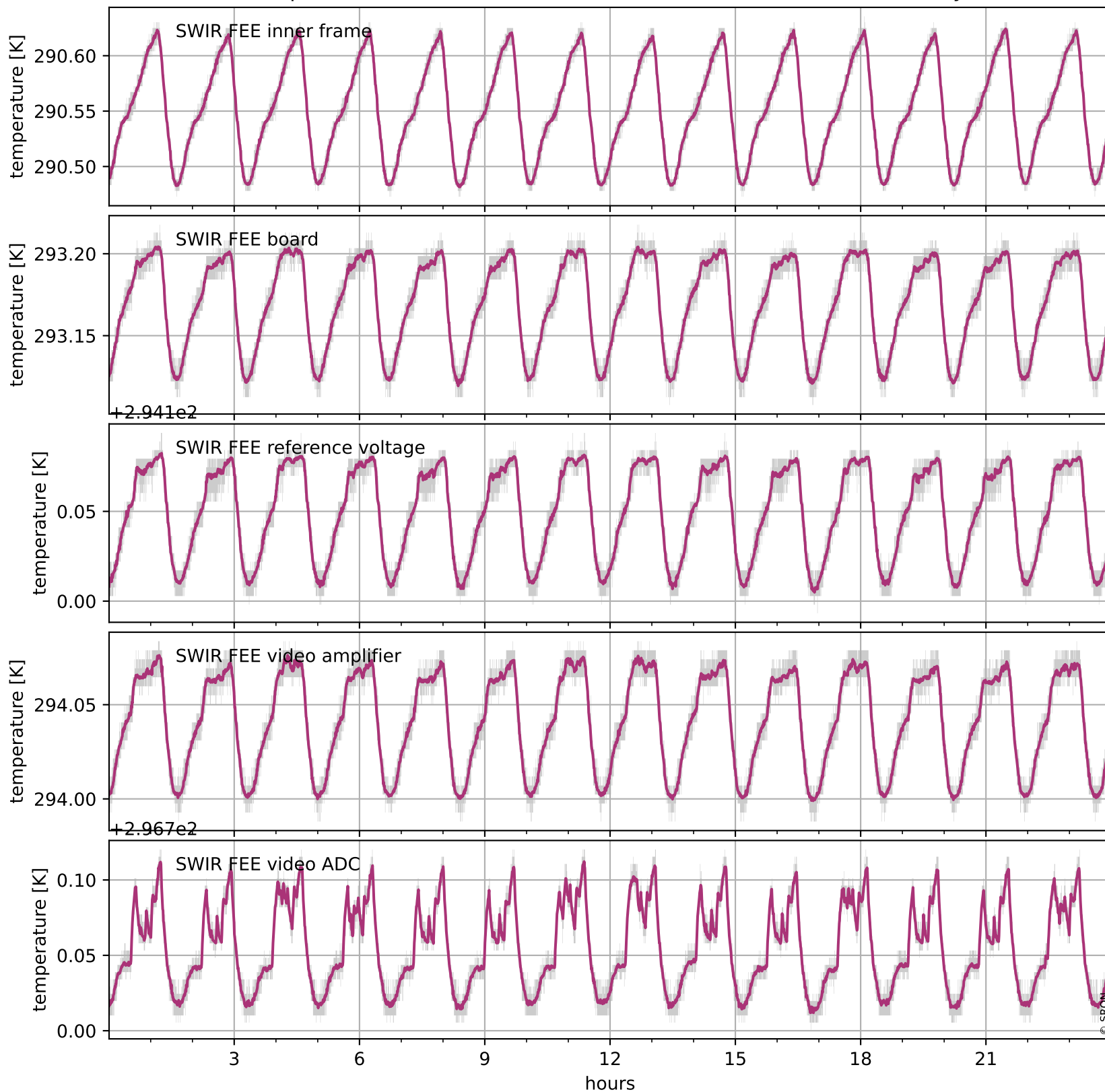
## Current and duty cycle of 3 heaters relevant for SWIR (five weeks)



# Tropomi SWIR housekeeping data

orbits: [32371, 32384]  
coverage: 2024-01-12 / 2024-01-13  
created: 2024-01-13T05:21:08Z

## Temperature of sensors at the SWIR front-end electronics (one day)



# Tropomi SWIR housekeeping data

orbits: [31900, 32384]  
coverage: 2023-12-09 / 2024-01-13  
created: 2024-01-13T05:21:09Z

## Temperature of sensors at the SWIR front-end electronics (five weeks)

