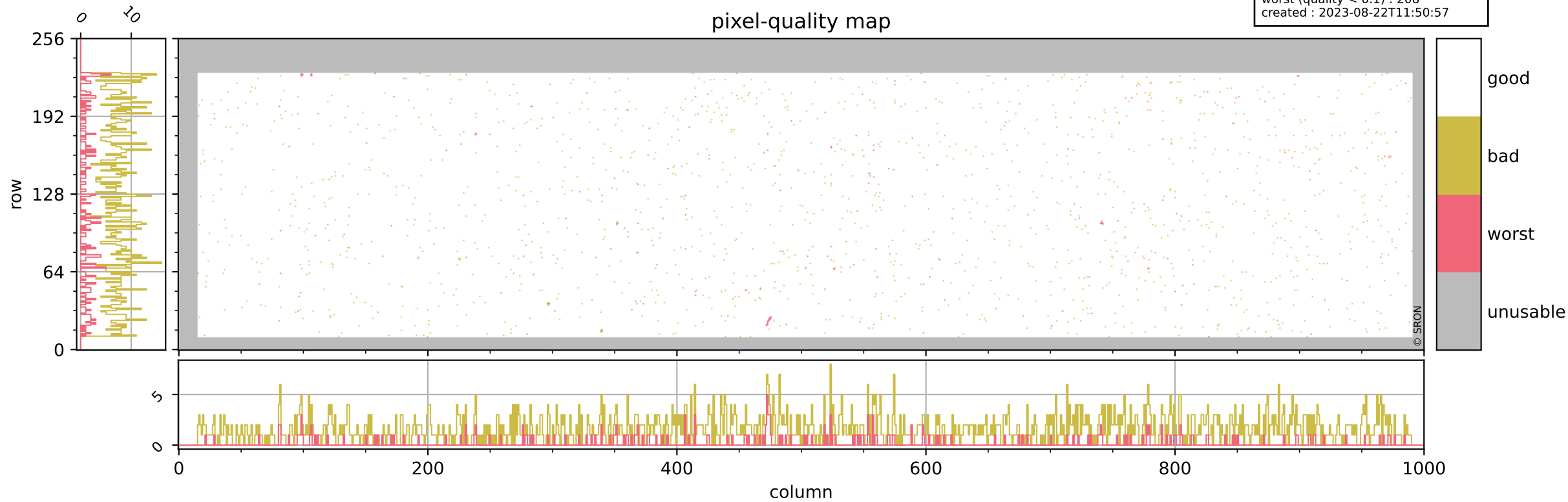


Tropomi SWIR pixel quality (beta nominal)

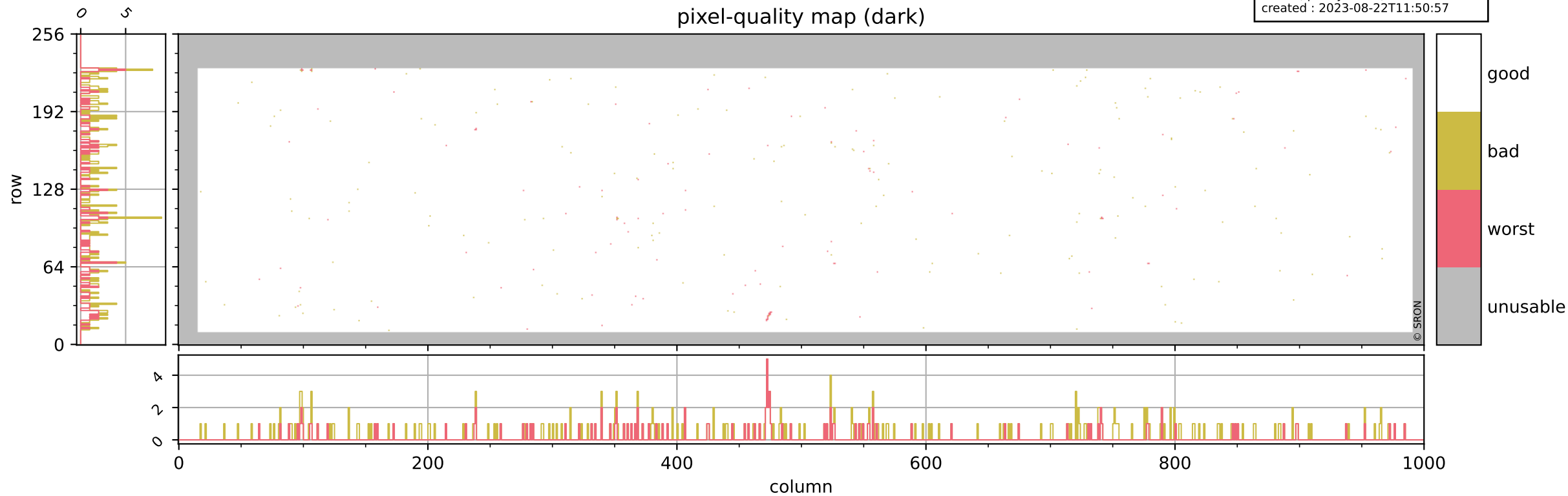
orbits : 32 in [2377, 2422]
coverage : 2018-03-29 / 2018-04-01
bad (quality < 0.8) : 1641
worst (quality < 0.1) : 208
created : 2023-08-22T11:50:57

pixel-quality map



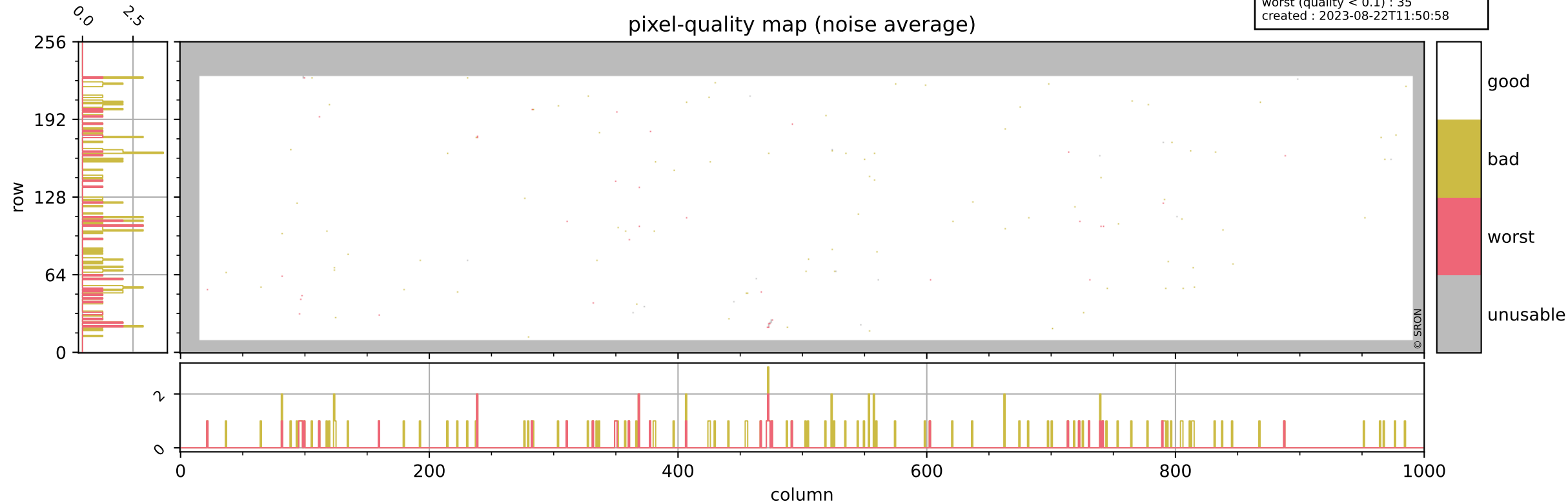
Tropomi SWIR pixel quality (beta nominal)

orbits : 32 in [2377, 2422]
coverage : 2018-03-29 / 2018-04-01
bad (quality < 0.8) : 285
worst (quality < 0.1) : 111
created : 2023-08-22T11:50:57



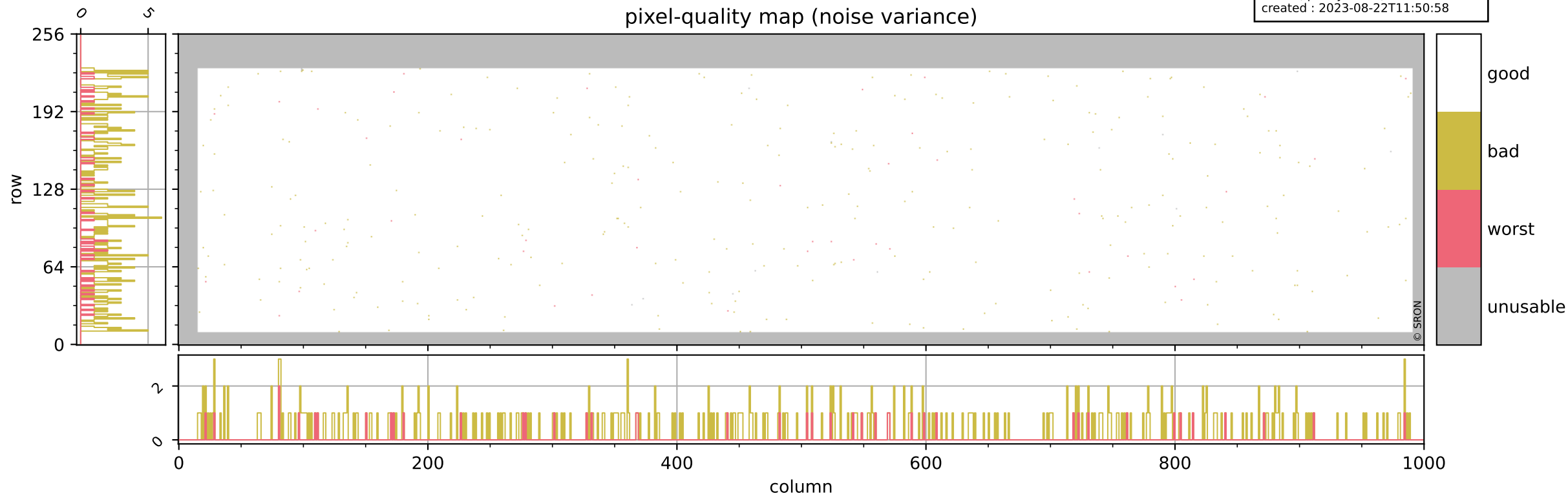
Tropomi SWIR pixel quality (beta nominal)

orbits : 32 in [2377, 2422]
coverage : 2018-03-29 / 2018-04-01
bad (quality < 0.8) : 124
worst (quality < 0.1) : 35
created : 2023-08-22T11:50:58



Tropomi SWIR pixel quality (beta nominal)

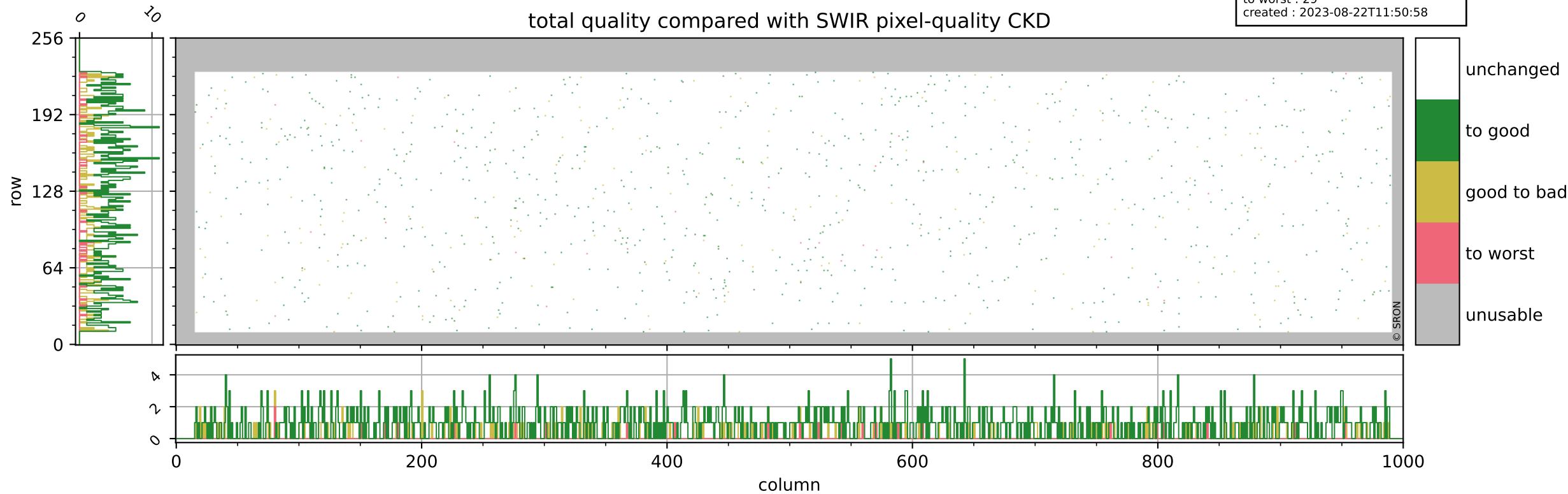
orbits : 32 in [2377, 2422]
coverage : 2018-03-29 / 2018-04-01
bad (quality < 0.8) : 329
worst (quality < 0.1) : 43
created : 2023-08-22T11:50:58



Tropomi SWIR pixel quality (beta nominal)

orbits : 32 in [2377, 2422]
coverage : 2018-03-29 / 2018-04-01
to good : 872
good to bad : 208
to worst : 29
created : 2023-08-22T11:50:58

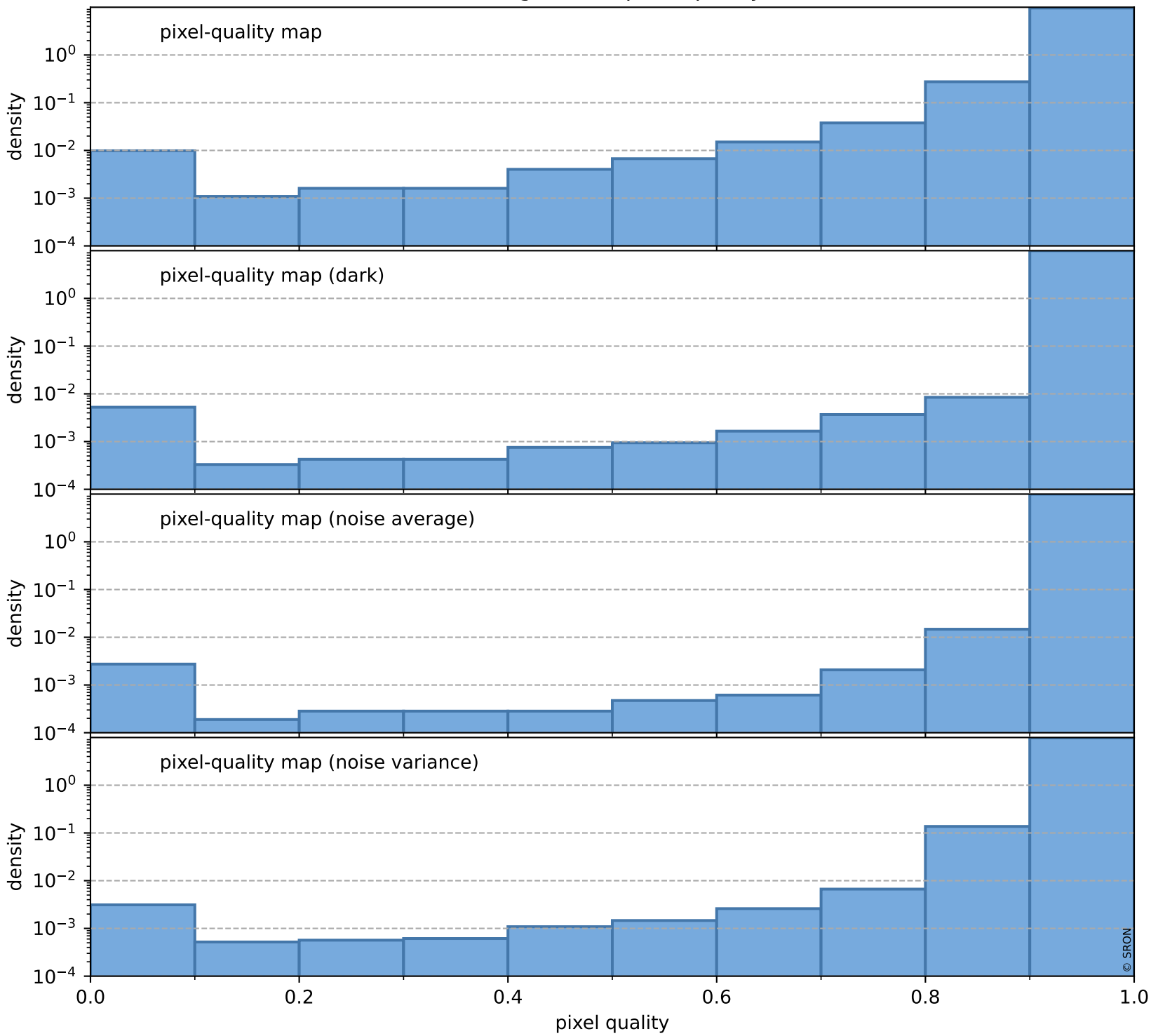
total quality compared with SWIR pixel-quality CKD



Tropomi SWIR pixel quality (beta nominal)

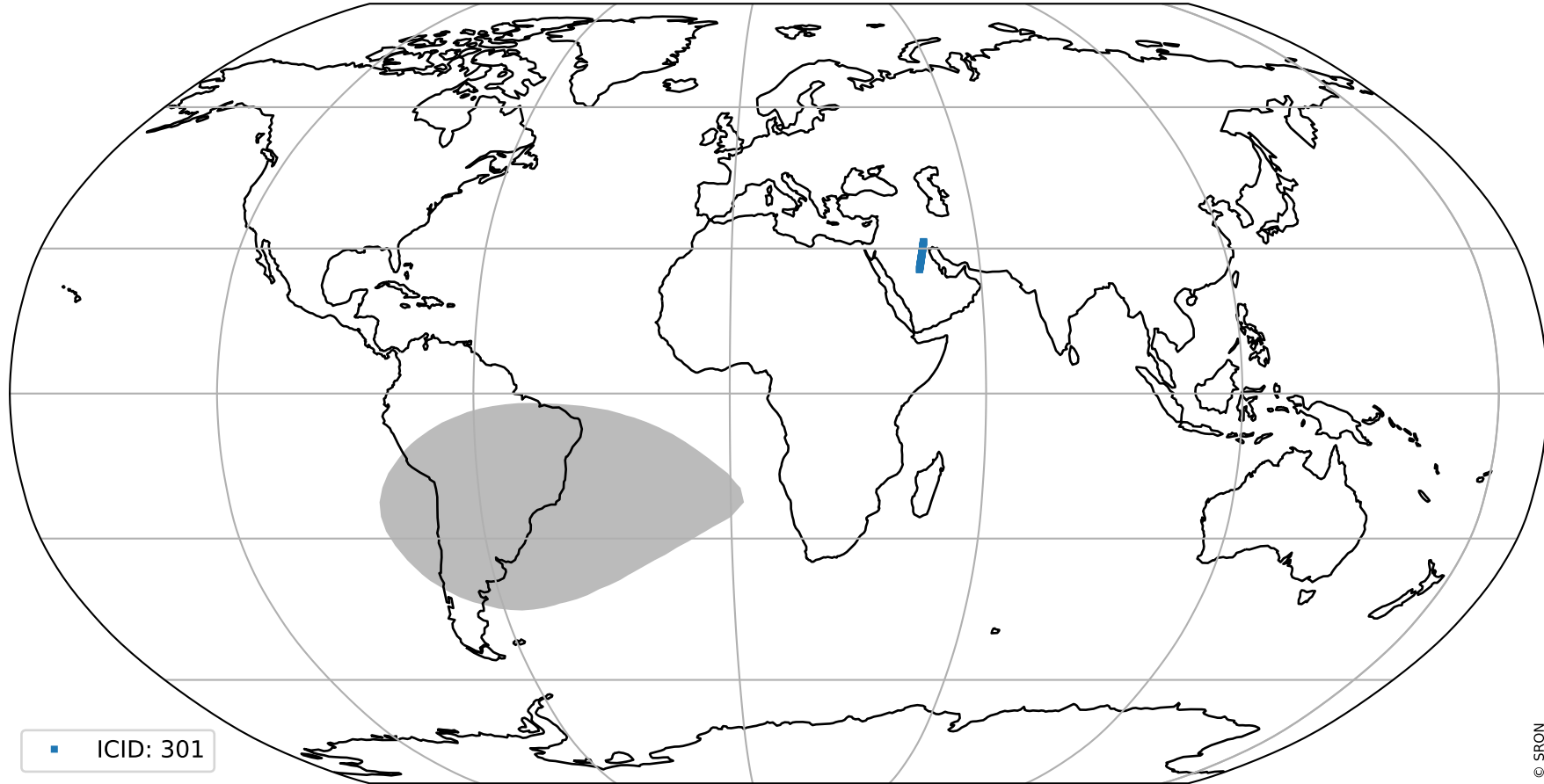
orbits : 32 in [2377, 2422]
coverage : 2018-03-29 / 2018-04-01
created : 2023-08-22T11:50:58

Histograms of pixel-quality



Tropomi SWIR pixel quality (beta nominal) ground-tracks of Sentinel-5P

orbits : 32 in [2377, 2422]
coverage : 2018-03-29 / 2018-04-01
created : 2023-08-22T11:50:59



Tropomi SWIR pixel quality (beta nominal)

orbits : [1867, 2422]
coverage : 2018-02-20 / 2018-04-01
created : 2023-08-22T11:50:59

trend of pixel quality & temperatures

