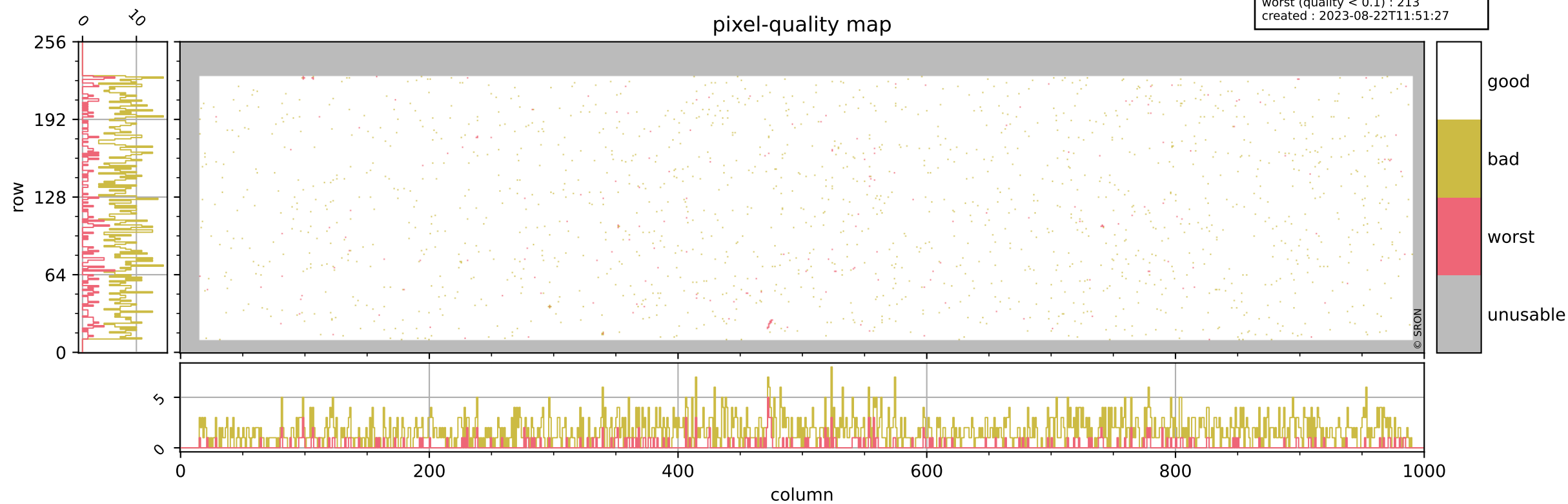


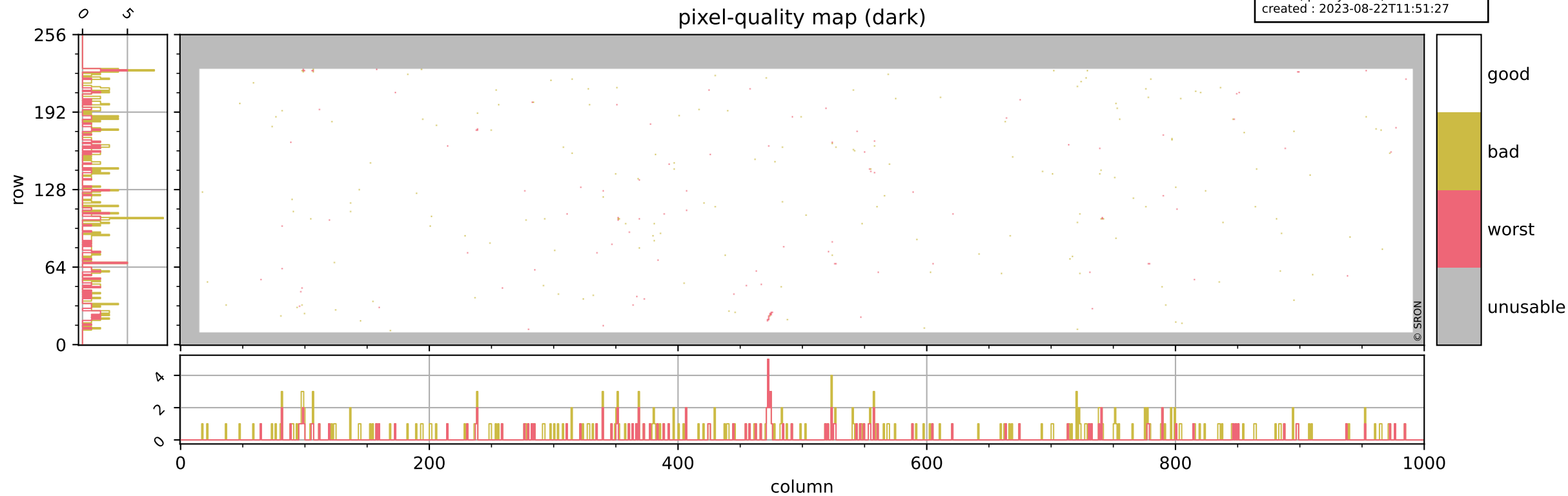
Tropomi SWIR pixel quality (beta nominal)

orbits : 20 in [2962, 3007]
coverage : 2018-05-10 / 2018-05-13
bad (quality < 0.8) : 1692
worst (quality < 0.1) : 213
created : 2023-08-22T11:51:27



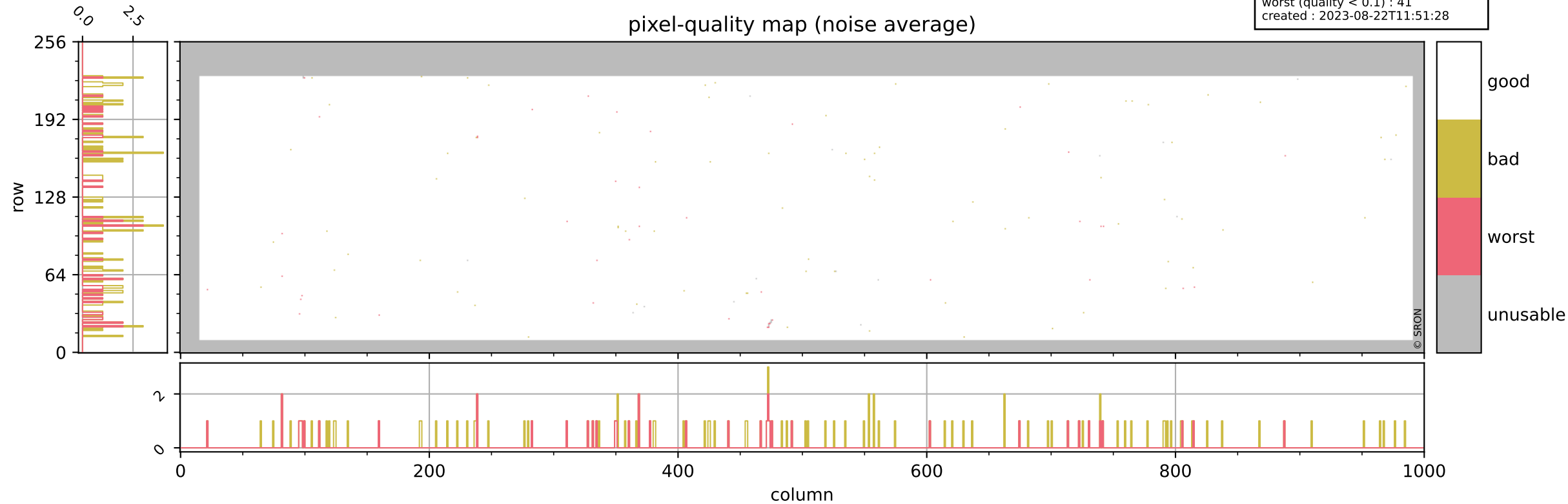
Tropomi SWIR pixel quality (beta nominal)

orbits : 20 in [2962, 3007]
coverage : 2018-05-10 / 2018-05-13
bad (quality < 0.8) : 285
worst (quality < 0.1) : 112
created : 2023-08-22T11:51:27



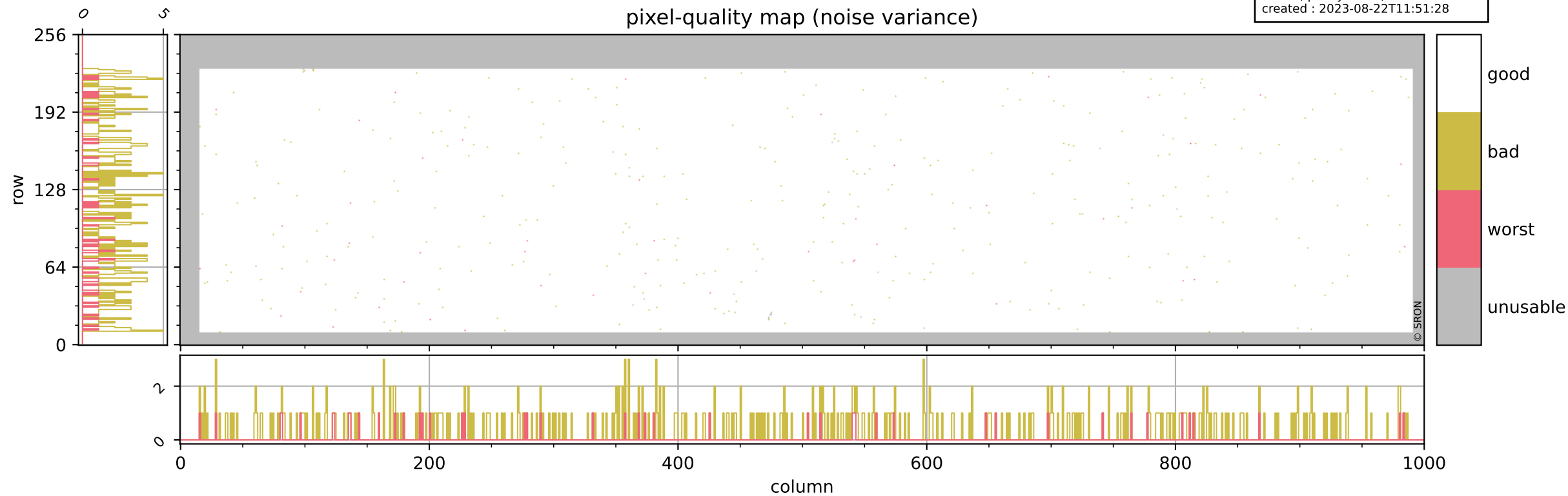
Tropomi SWIR pixel quality (beta nominal)

orbits : 20 in [2962, 3007]
coverage : 2018-05-10 / 2018-05-13
bad (quality < 0.8) : 120
worst (quality < 0.1) : 41
created : 2023-08-22T11:51:28



Tropomi SWIR pixel quality (beta nominal)

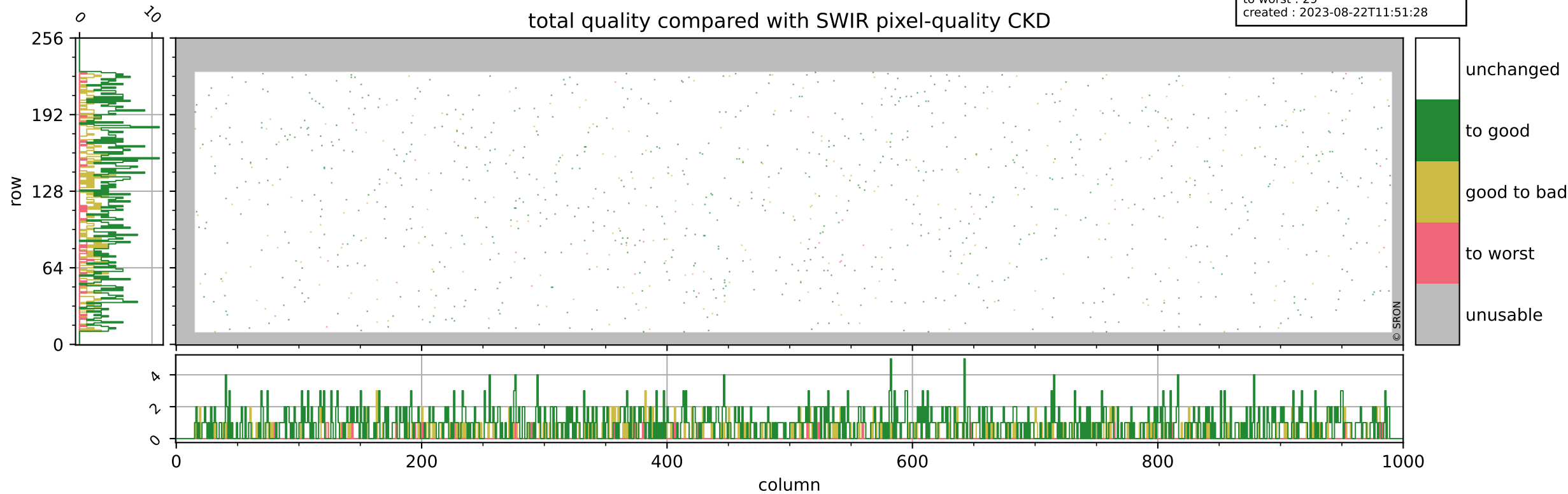
orbits : 20 in [2962, 3007]
coverage : 2018-05-10 / 2018-05-13
bad (quality < 0.8) : 372
worst (quality < 0.1) : 46
created : 2023-08-22T11:51:28



Tropomi SWIR pixel quality (beta nominal)

orbits : 20 in [2962, 3007]
coverage : 2018-05-10 / 2018-05-13
to good : 871
good to bad : 259
to worst : 29
created : 2023-08-22T11:51:28

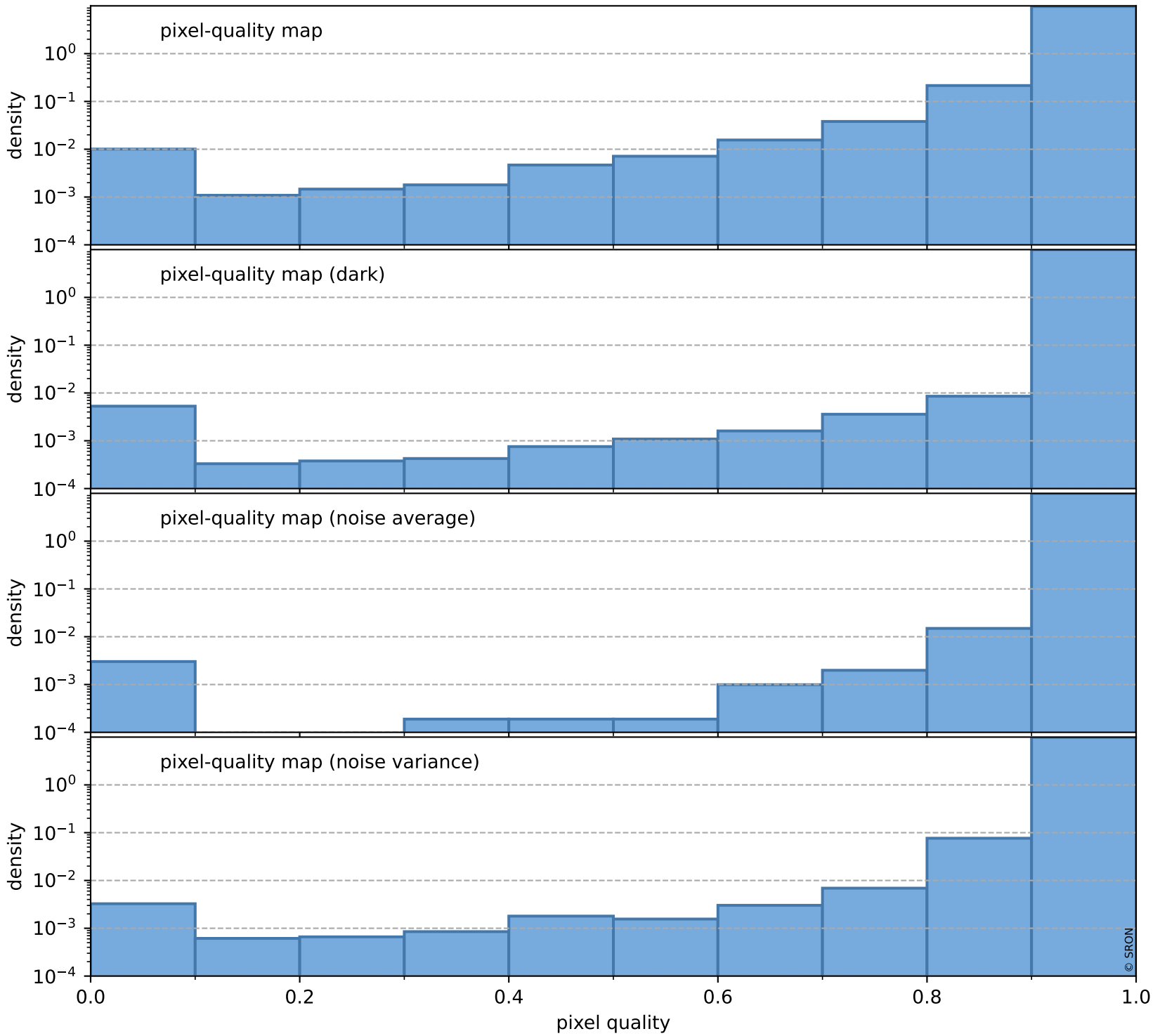
total quality compared with SWIR pixel-quality CKD



Tropomi SWIR pixel quality (beta nominal)

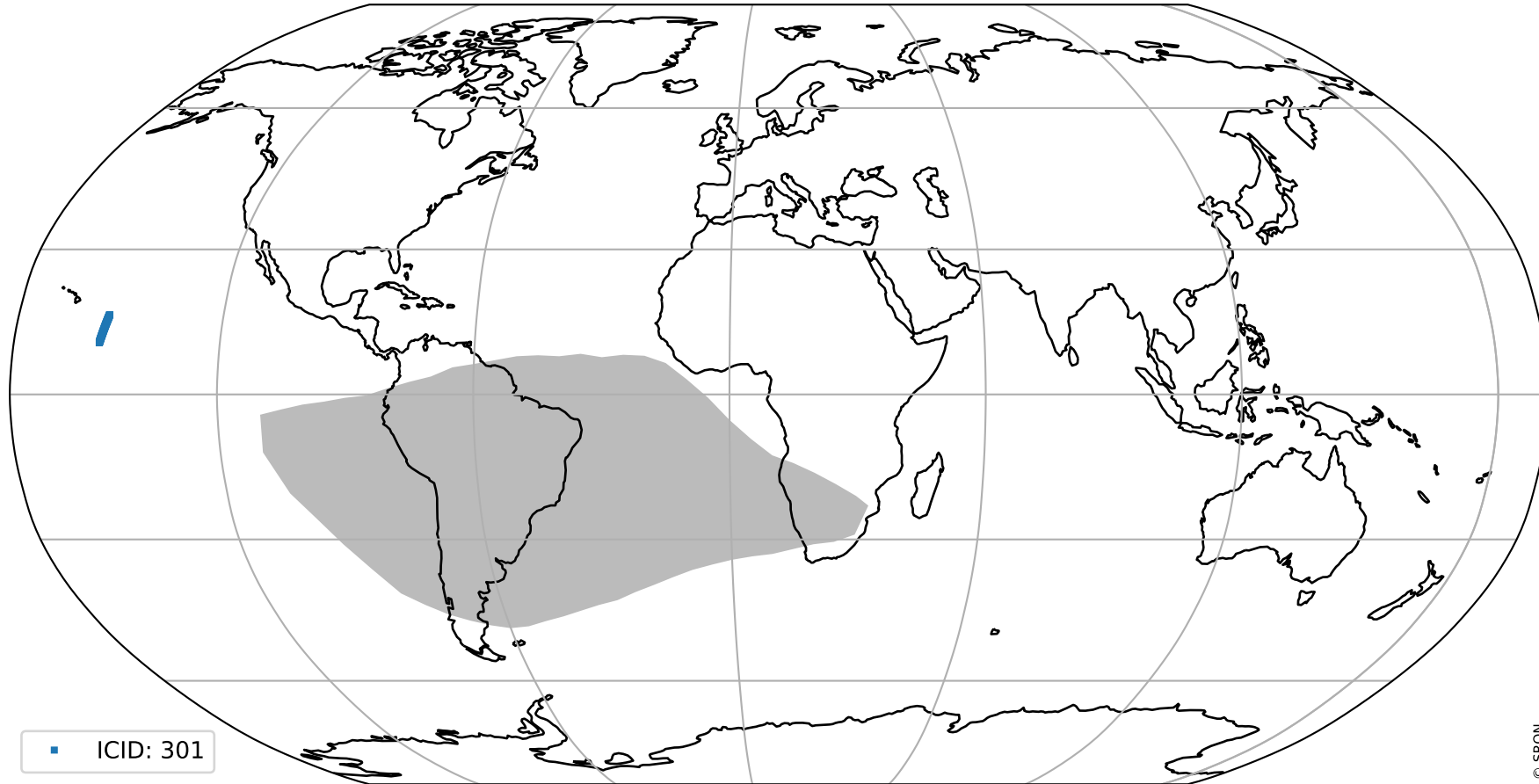
orbits : 20 in [2962, 3007]
coverage : 2018-05-10 / 2018-05-13
created : 2023-08-22T11:51:28

Histograms of pixel-quality



Tropomi SWIR pixel quality (beta nominal) ground-tracks of Sentinel-5P

orbits : 20 in [2962, 3007]
coverage : 2018-05-10 / 2018-05-13
created : 2023-08-22T11:51:29



Tropomi SWIR pixel quality (beta nominal)

orbits : [1867, 3007]
coverage : 2018-02-20 / 2018-05-13
created : 2023-08-22T11:51:29

trend of pixel quality & temperatures

