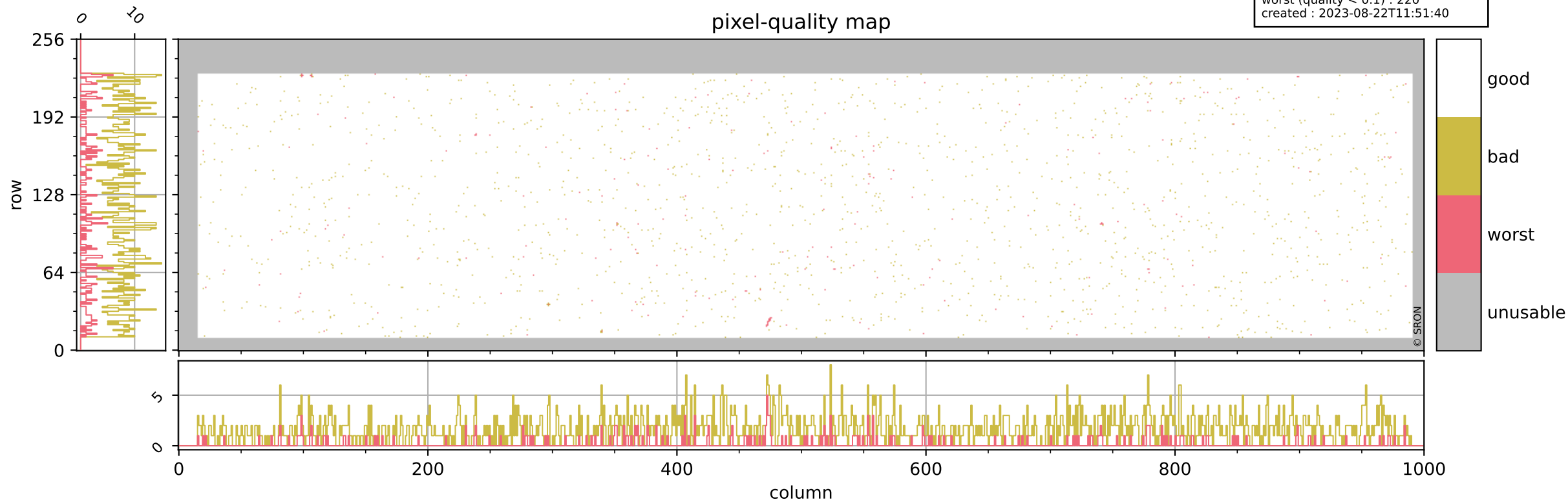


Tropomi SWIR pixel quality (beta nominal)

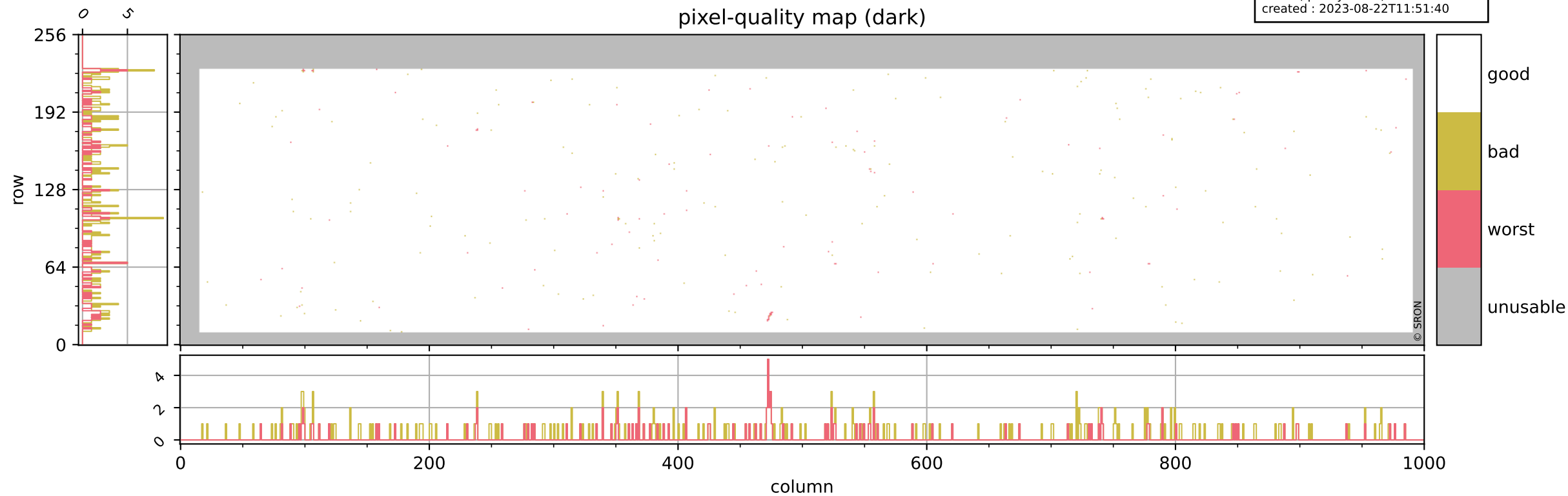
orbits : 18 in [3187, 3232]
coverage : 2018-05-26 / 2018-05-29
bad (quality < 0.8) : 1711
worst (quality < 0.1) : 220
created : 2023-08-22T11:51:40

pixel-quality map



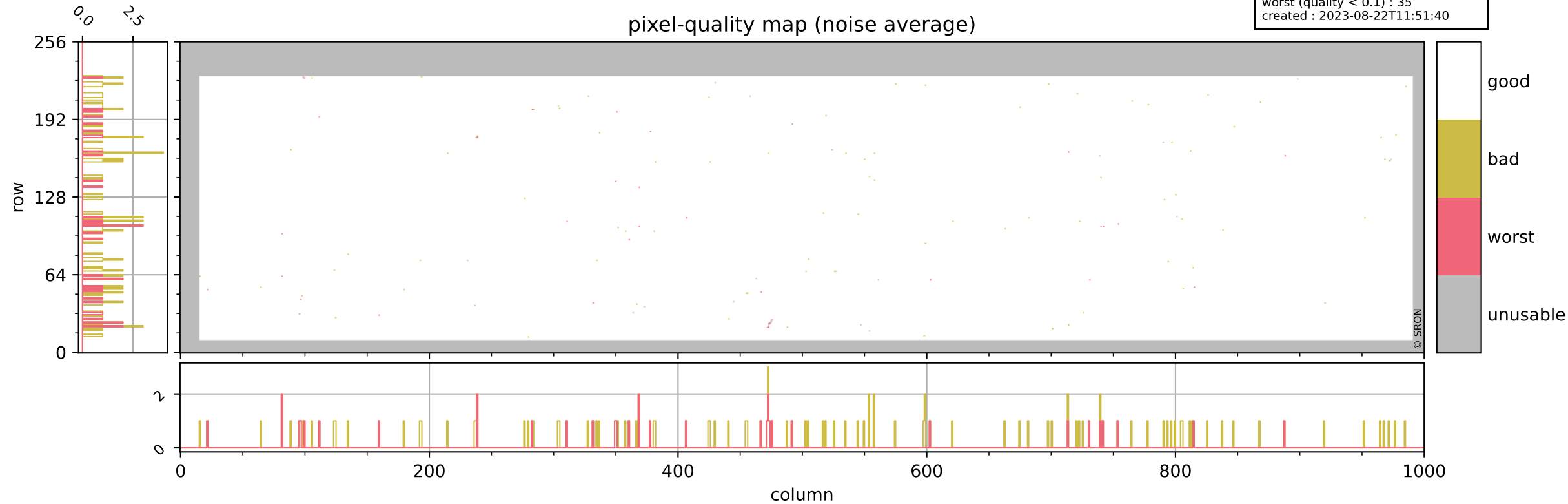
Tropomi SWIR pixel quality (beta nominal)

orbits : 18 in [3187, 3232]
coverage : 2018-05-26 / 2018-05-29
bad (quality < 0.8) : 288
worst (quality < 0.1) : 110
created : 2023-08-22T11:51:40



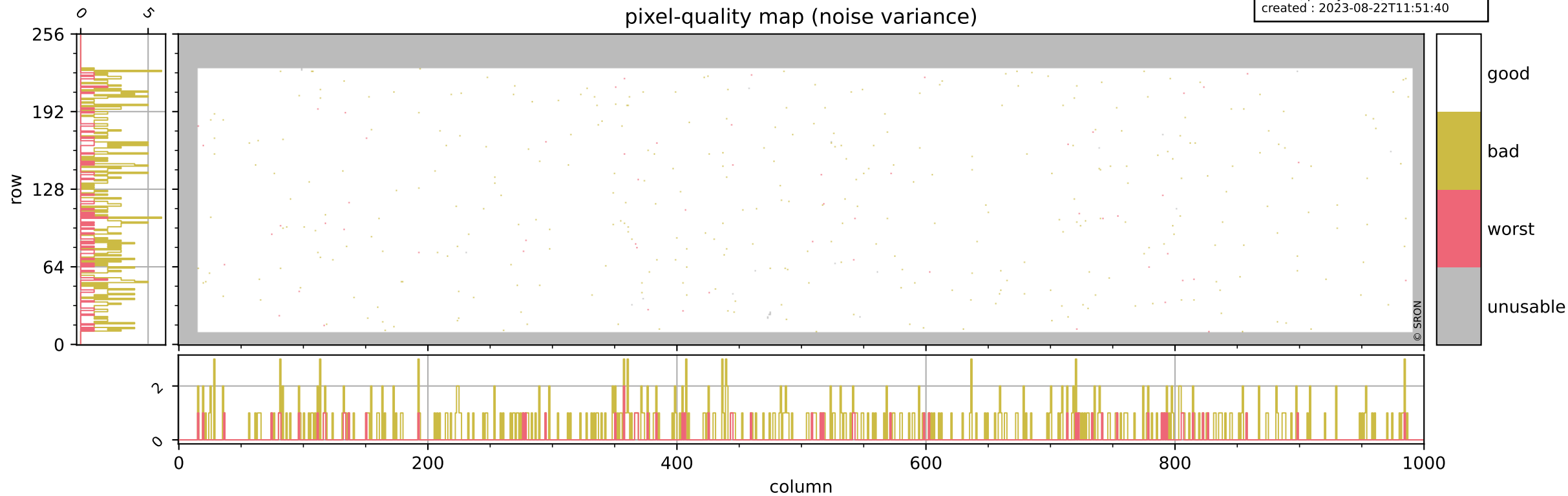
Tropomi SWIR pixel quality (beta nominal)

orbits : 18 in [3187, 3232]
coverage : 2018-05-26 / 2018-05-29
bad (quality < 0.8) : 118
worst (quality < 0.1) : 35
created : 2023-08-22T11:51:40



Tropomi SWIR pixel quality (beta nominal)

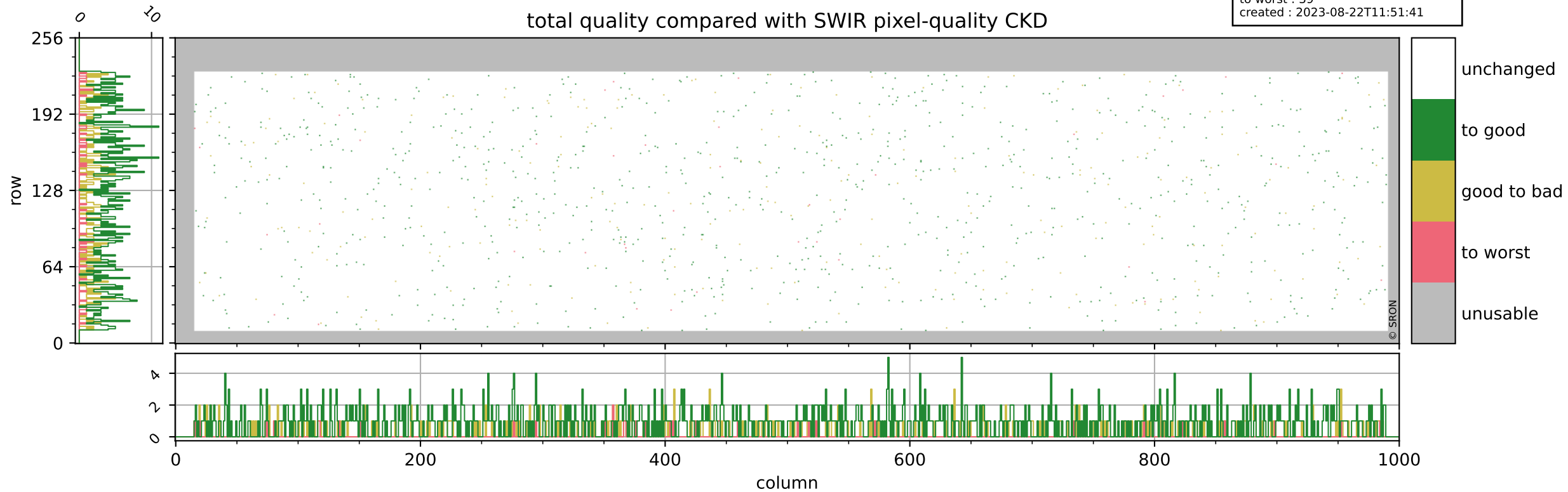
orbits : 18 in [3187, 3232]
coverage : 2018-05-26 / 2018-05-29
bad (quality < 0.8) : 397
worst (quality < 0.1) : 58
created : 2023-08-22T11:51:40



Tropomi SWIR pixel quality (beta nominal)

orbits : 18 in [3187, 3232]
coverage : 2018-05-26 / 2018-05-29
to good : 860
good to bad : 258
to worst : 39
created : 2023-08-22T11:51:41

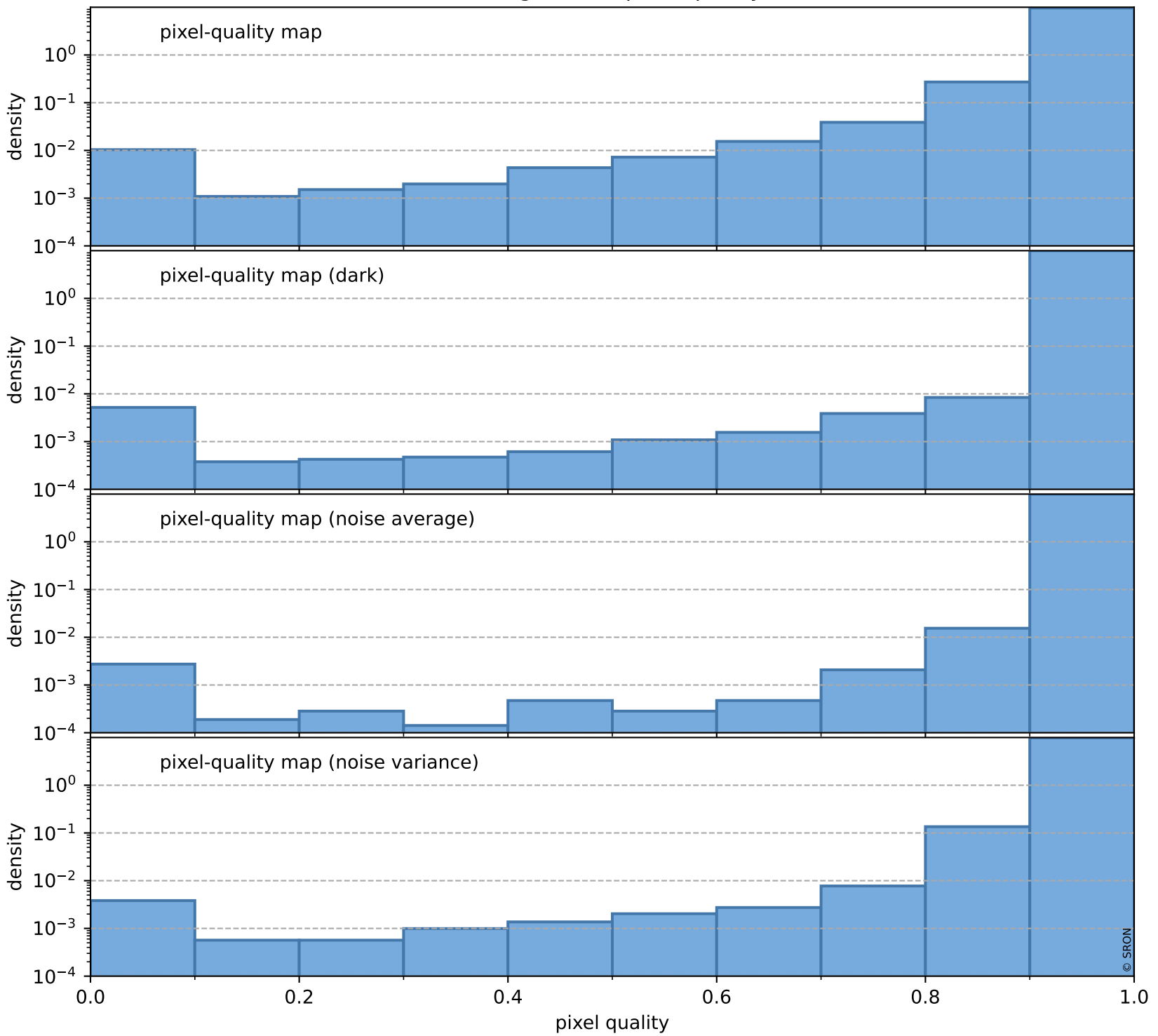
total quality compared with SWIR pixel-quality CKD



Tropomi SWIR pixel quality (beta nominal)

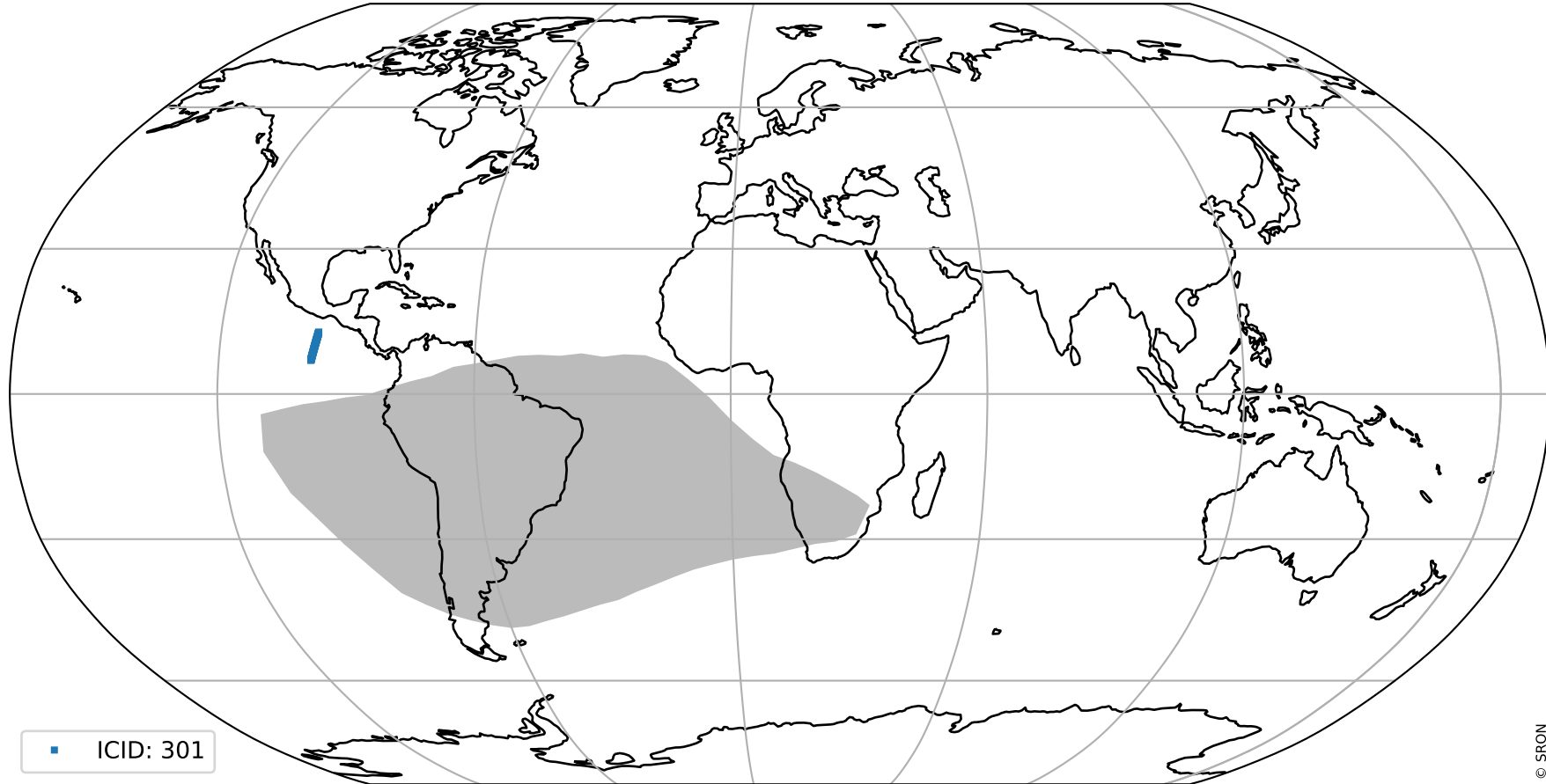
orbits : 18 in [3187, 3232]
coverage : 2018-05-26 / 2018-05-29
created : 2023-08-22T11:51:41

Histograms of pixel-quality



Tropomi SWIR pixel quality (beta nominal) ground-tracks of Sentinel-5P

orbits : 18 in [3187, 3232]
coverage : 2018-05-26 / 2018-05-29
created : 2023-08-22T11:51:41



Tropomi SWIR pixel quality (beta nominal)

orbits : [1867, 3232]
coverage : 2018-02-20 / 2018-05-29
created : 2023-08-22T11:51:42

trend of pixel quality & temperatures

