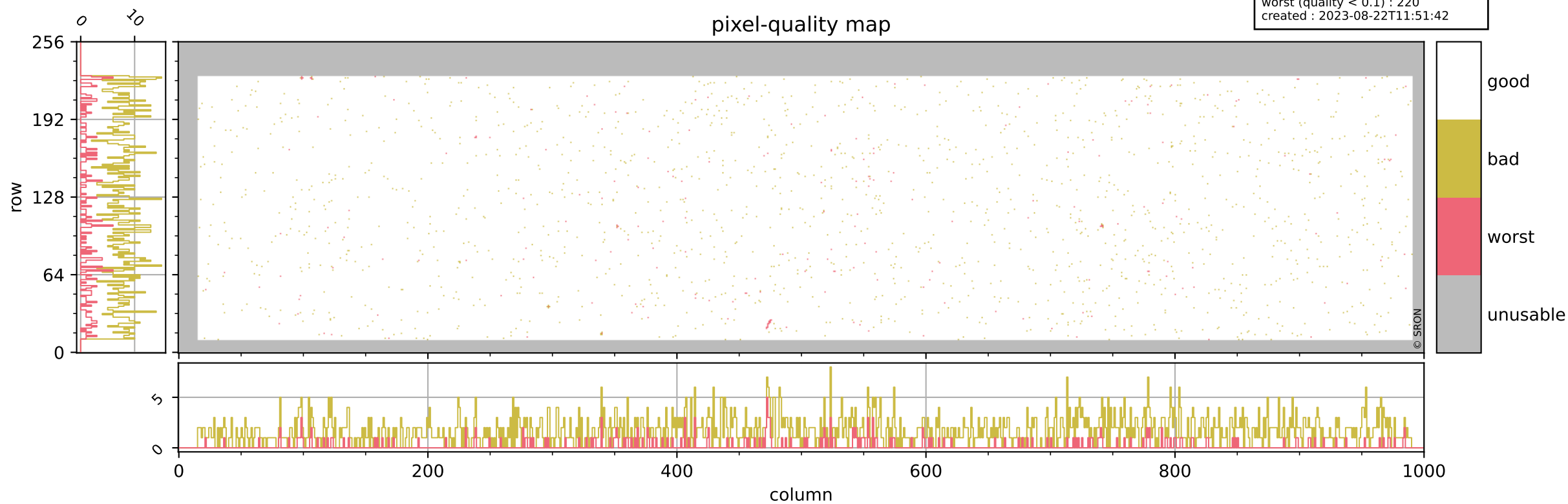


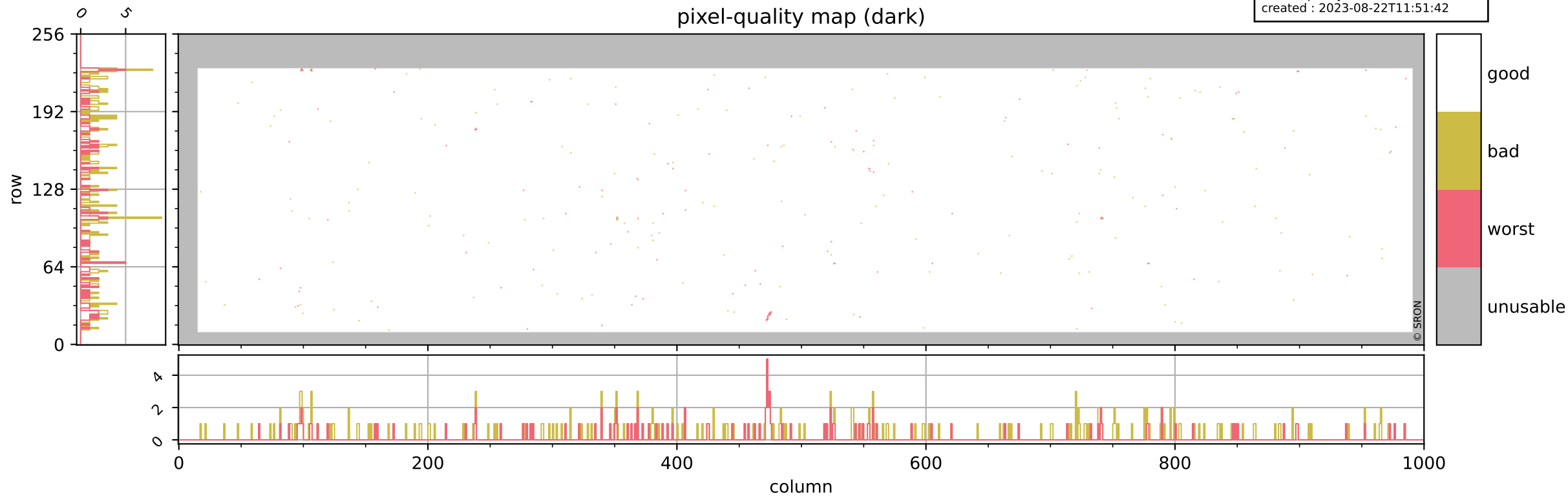
Tropomi SWIR pixel quality (beta nominal)

orbits : 20 in [3232, 3277]
coverage : 2018-05-29 / 2018-06-01
bad (quality < 0.8) : 1715
worst (quality < 0.1) : 220
created : 2023-08-22T11:51:42



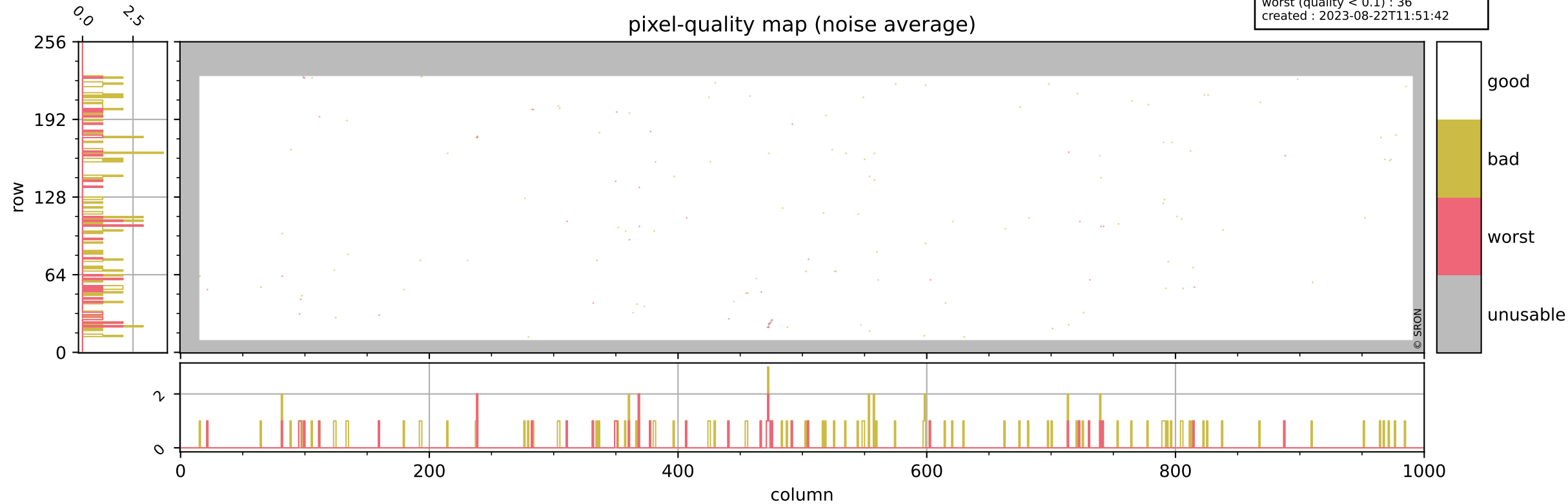
Tropomi SWIR pixel quality (beta nominal)

orbits : 20 in [3232, 3277]
coverage : 2018-05-29 / 2018-06-01
bad (quality < 0.8) : 284
worst (quality < 0.1) : 112
created : 2023-08-22T11:51:42



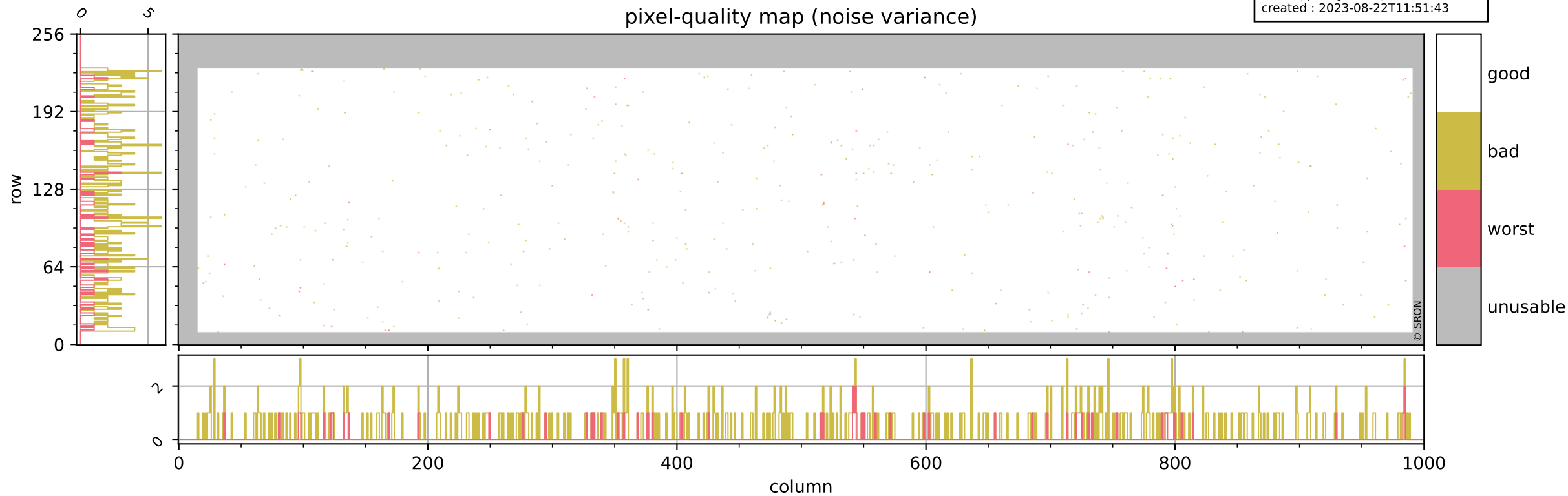
Tropomi SWIR pixel quality (beta nominal)

orbits : 20 in [3232, 3277]
coverage : 2018-05-29 / 2018-06-01
bad (quality < 0.8) : 125
worst (quality < 0.1) : 36
created : 2023-08-22T11:51:42



Tropomi SWIR pixel quality (beta nominal)

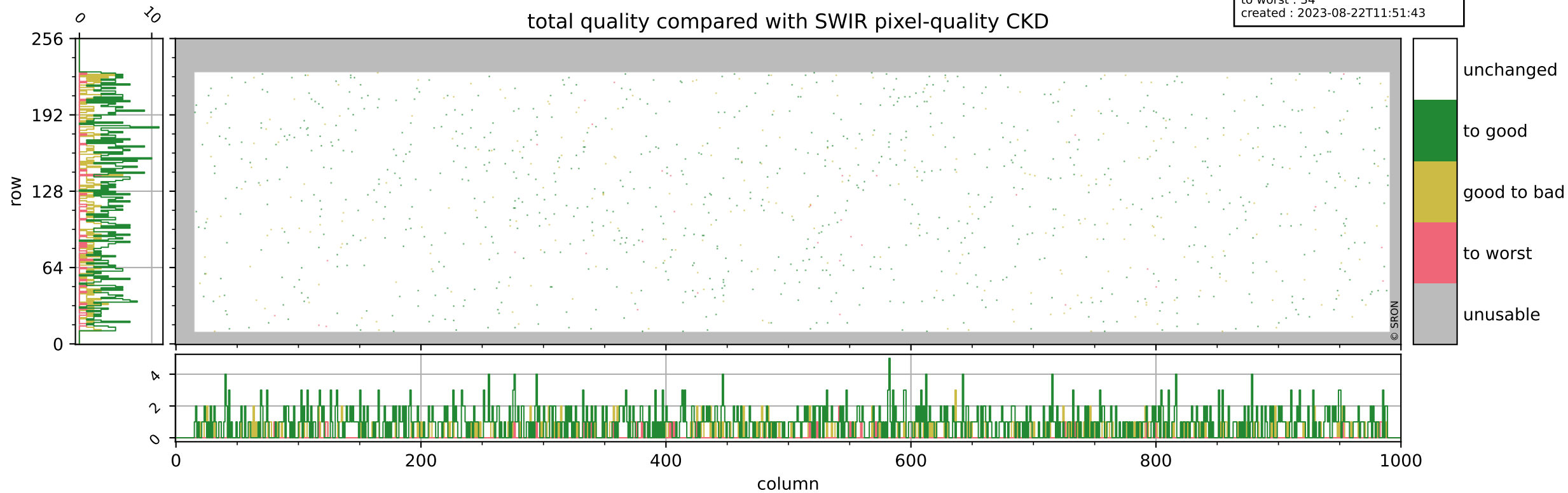
orbits : 20 in [3232, 3277]
coverage : 2018-05-29 / 2018-06-01
bad (quality < 0.8) : 410
worst (quality < 0.1) : 57
created : 2023-08-22T11:51:43



Tropomi SWIR pixel quality (beta nominal)

orbits : 20 in [3232, 3277]
coverage : 2018-05-29 / 2018-06-01
to good : 865
good to bad : 273
to worst : 34
created : 2023-08-22T11:51:43

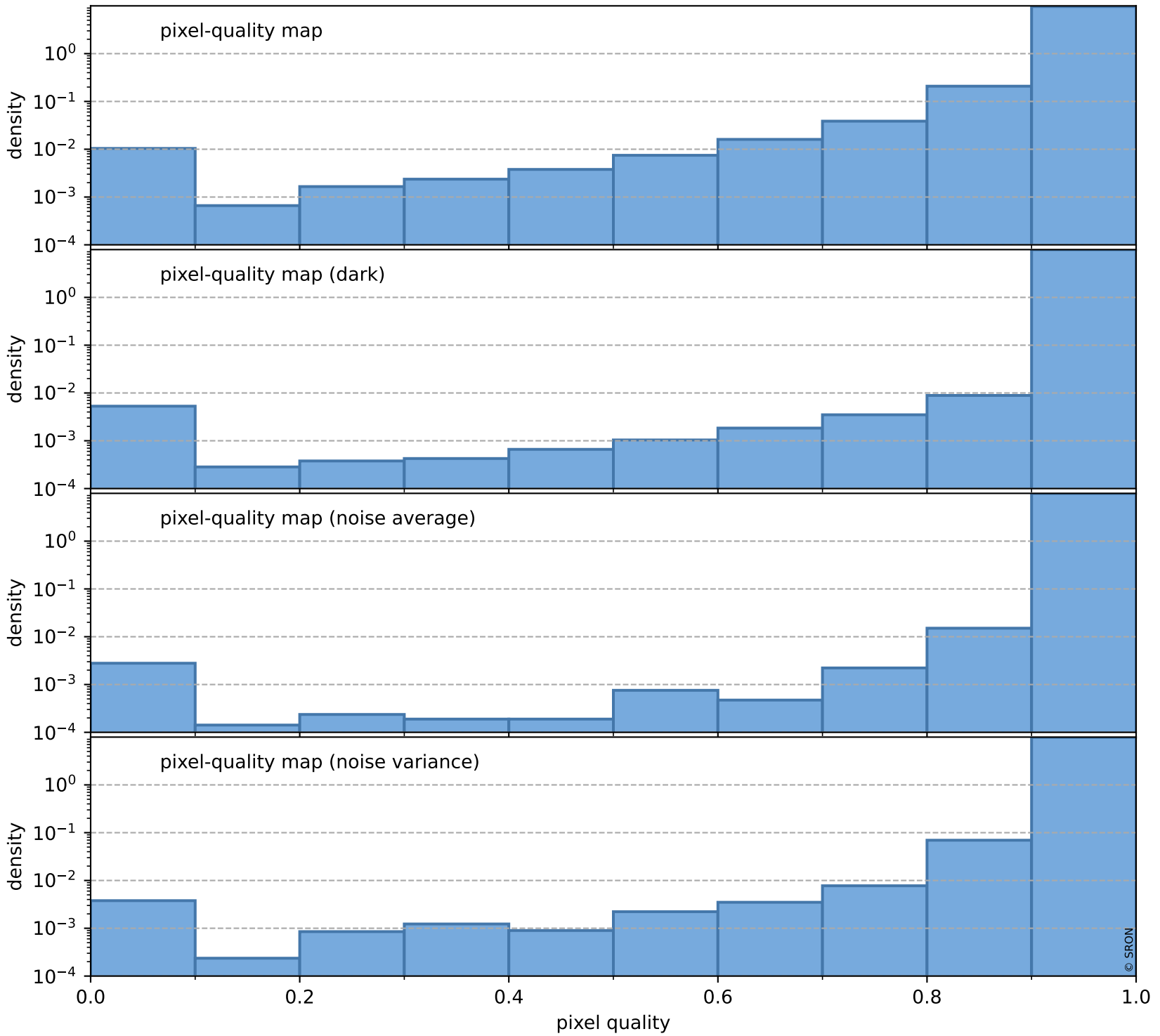
total quality compared with SWIR pixel-quality CKD



Tropomi SWIR pixel quality (beta nominal)

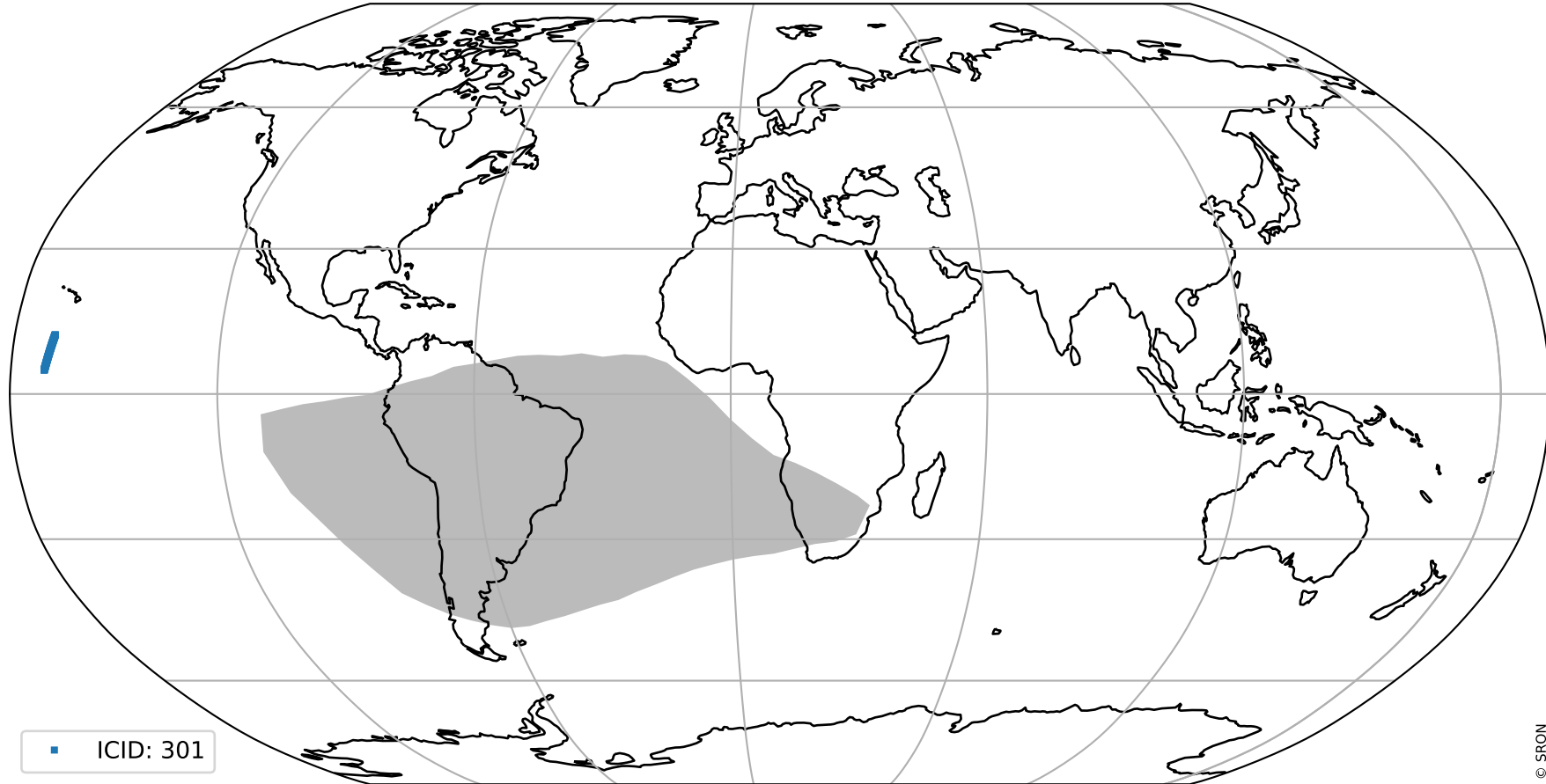
orbits : 20 in [3232, 3277]
coverage : 2018-05-29 / 2018-06-01
created : 2023-08-22T11:51:43

Histograms of pixel-quality



Tropomi SWIR pixel quality (beta nominal) ground-tracks of Sentinel-5P

orbits : 20 in [3232, 3277]
coverage : 2018-05-29 / 2018-06-01
created : 2023-08-22T11:51:44



Tropomi SWIR pixel quality (beta nominal)

orbits : [1867, 3277]
coverage : 2018-02-20 / 2018-06-01
created : 2023-08-22T11:51:44

trend of pixel quality & temperatures

