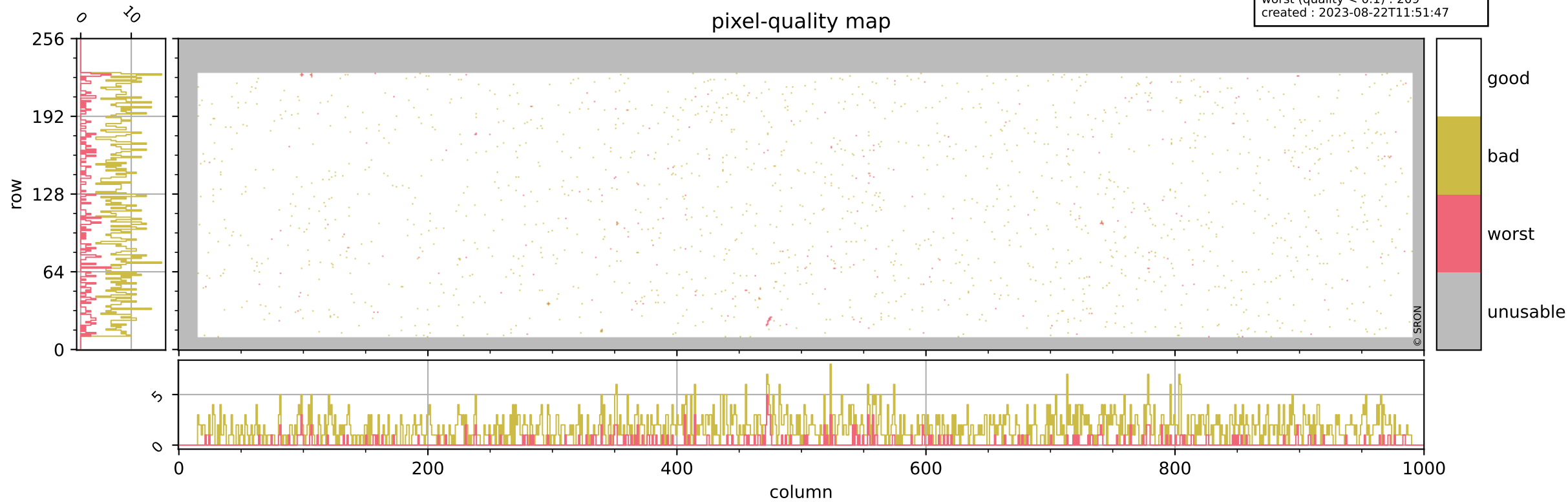


Tropomi SWIR pixel quality (beta nominal)

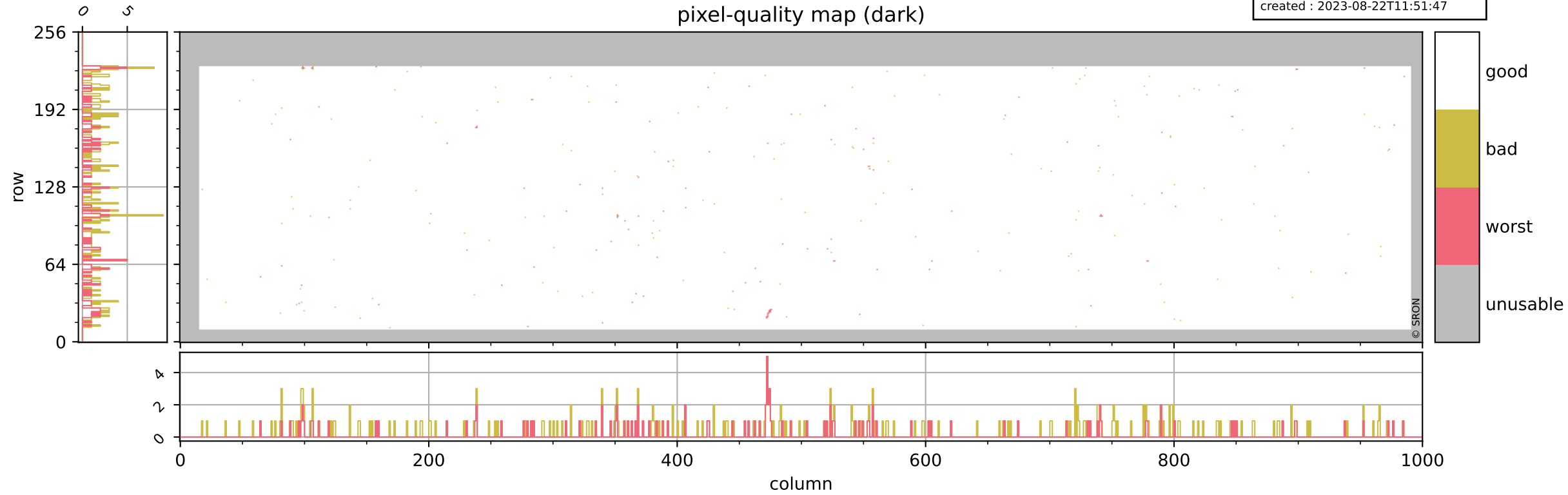
orbits : 20 in [3322, 3367]
coverage : 2018-06-04 / 2018-06-07
bad (quality < 0.8) : 1717
worst (quality < 0.1) : 209
created : 2023-08-22T11:51:47

pixel-quality map



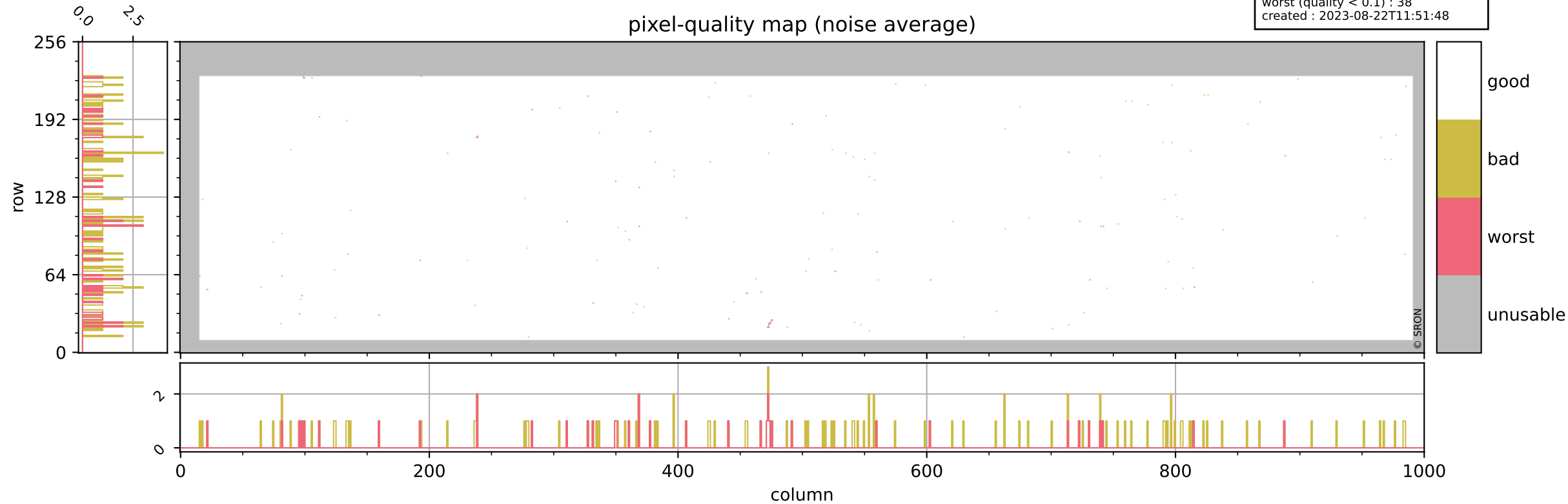
Tropomi SWIR pixel quality (beta nominal)

orbits : 20 in [3322, 3367]
coverage : 2018-06-04 / 2018-06-07
bad (quality < 0.8) : 286
worst (quality < 0.1) : 112
created : 2023-08-22T11:51:47



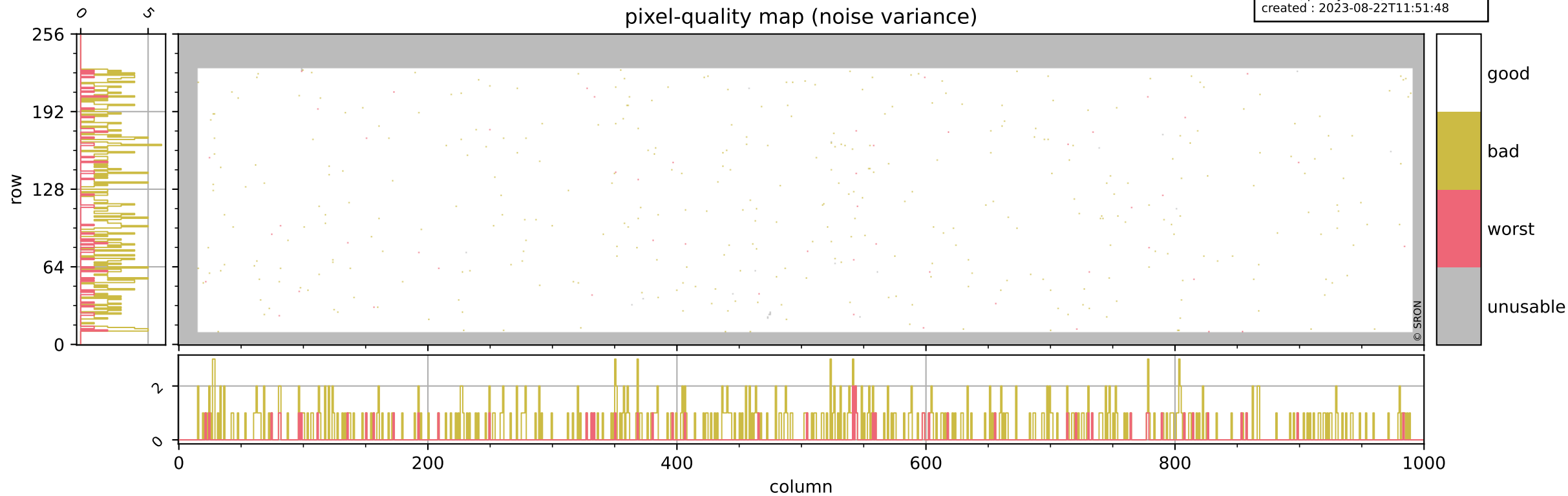
Tropomi SWIR pixel quality (beta nominal)

orbits : 20 in [3322, 3367]
coverage : 2018-06-04 / 2018-06-07
bad (quality < 0.8) : 132
worst (quality < 0.1) : 38
created : 2023-08-22T11:51:48



Tropomi SWIR pixel quality (beta nominal)

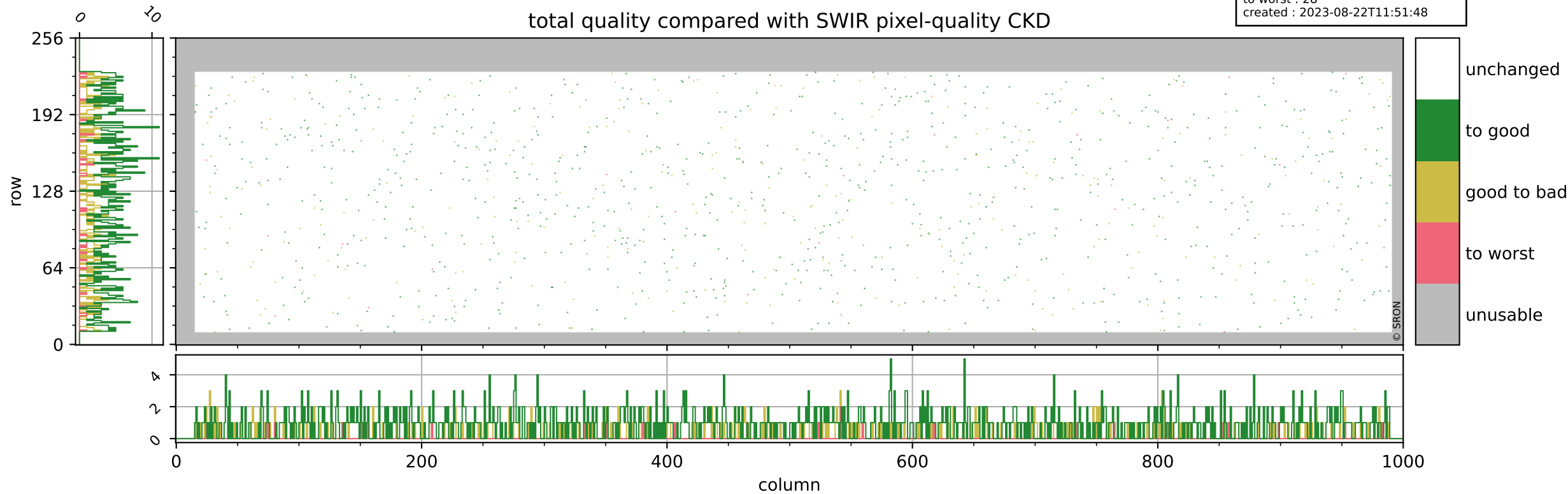
orbits : 20 in [3322, 3367]
coverage : 2018-06-04 / 2018-06-07
bad (quality < 0.8) : 410
worst (quality < 0.1) : 52
created : 2023-08-22T11:51:48



Tropomi SWIR pixel quality (beta nominal)

orbits : 20 in [3322, 3367]
coverage : 2018-06-04 / 2018-06-07
to good : 864
good to bad : 279
to worst : 28
created : 2023-08-22T11:51:48

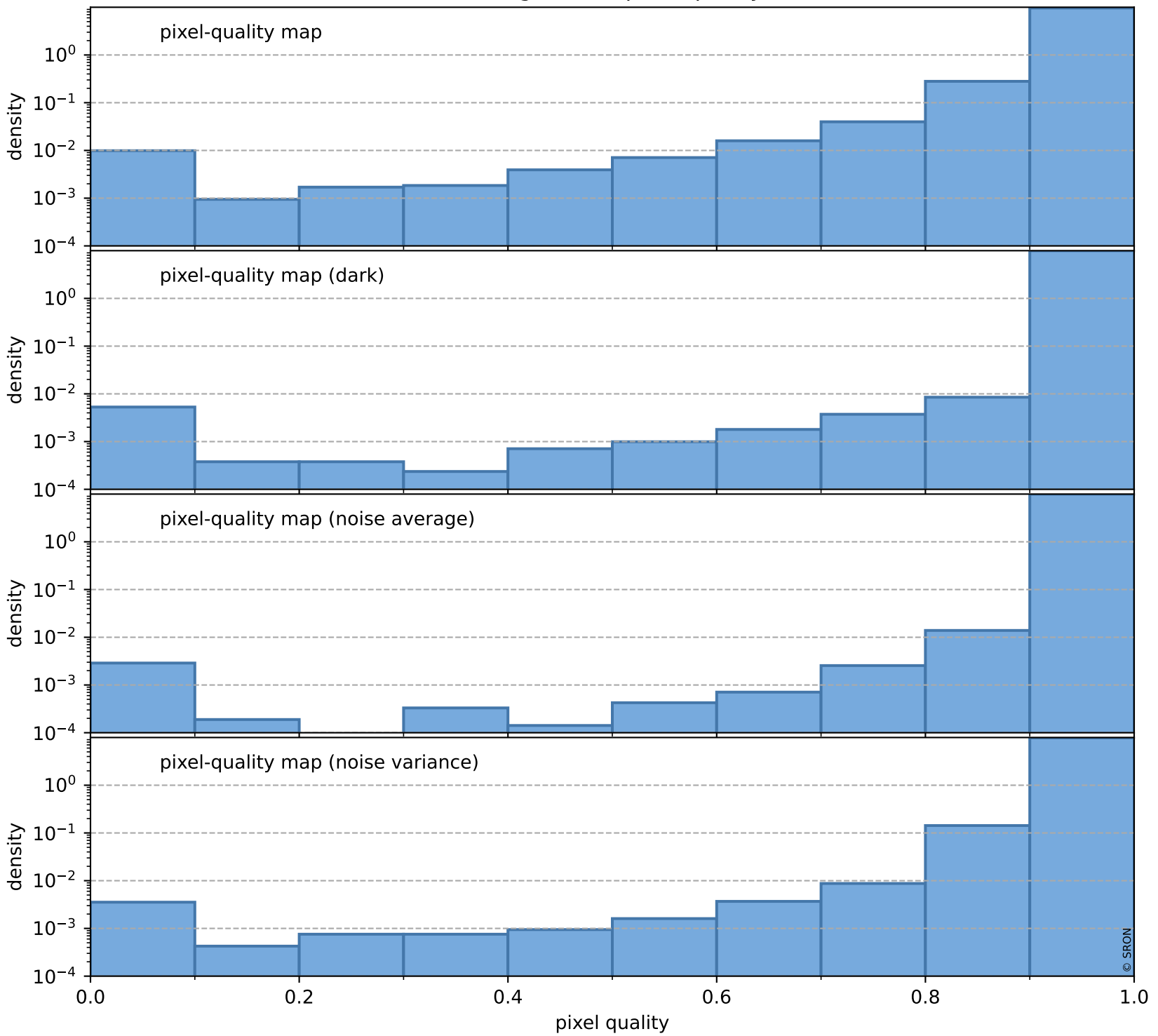
total quality compared with SWIR pixel-quality CKD



Tropomi SWIR pixel quality (beta nominal)

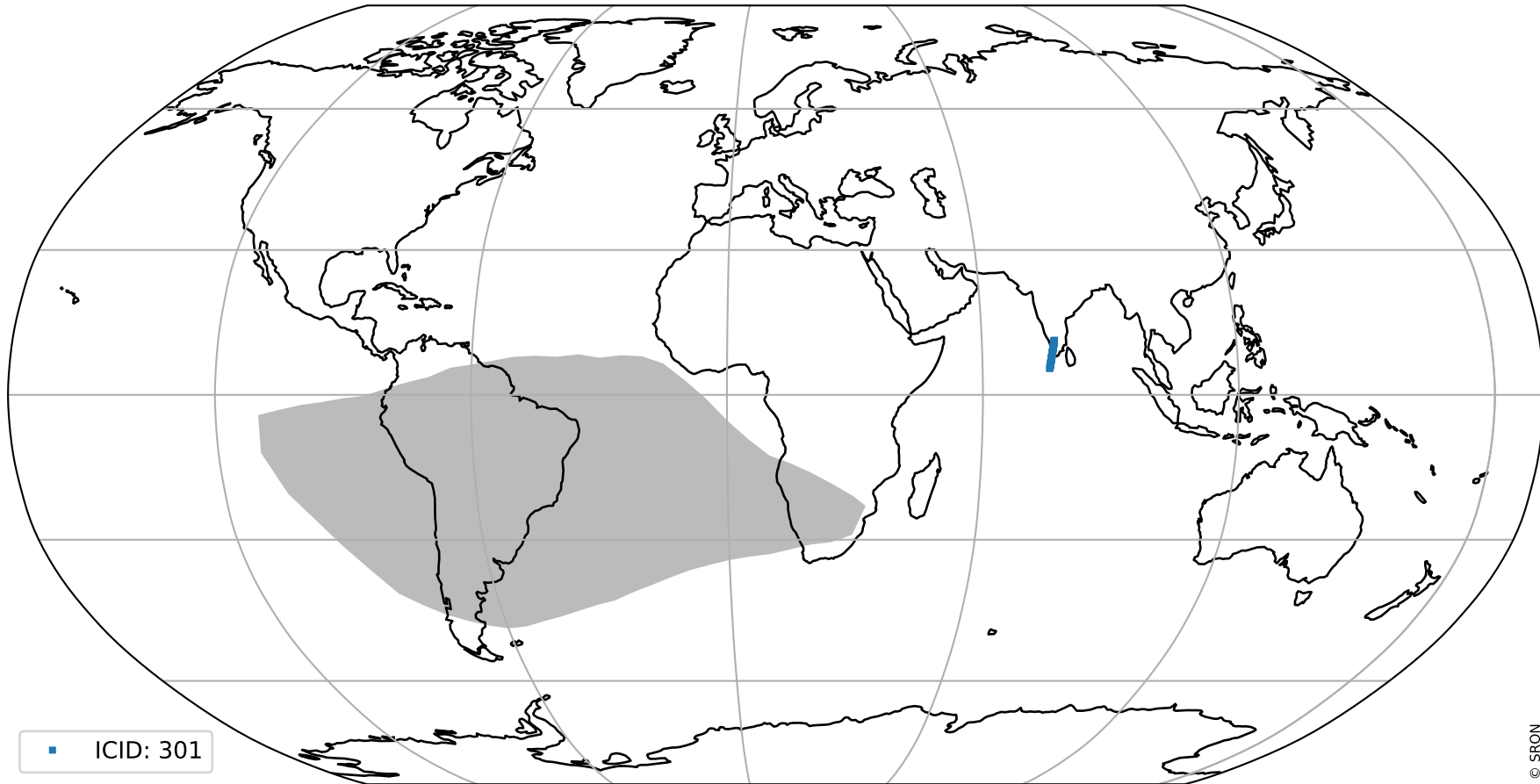
orbits : 20 in [3322, 3367]
coverage : 2018-06-04 / 2018-06-07
created : 2023-08-22T11:51:48

Histograms of pixel-quality



Tropomi SWIR pixel quality (beta nominal) ground-tracks of Sentinel-5P

orbits : 20 in [3322, 3367]
coverage : 2018-06-04 / 2018-06-07
created : 2023-08-22T11:51:49



■ ICID: 301

Tropomi SWIR pixel quality (beta nominal)

orbits : [1867, 3367]
coverage : 2018-02-20 / 2018-06-07
created : 2023-08-22T11:51:49

trend of pixel quality & temperatures

