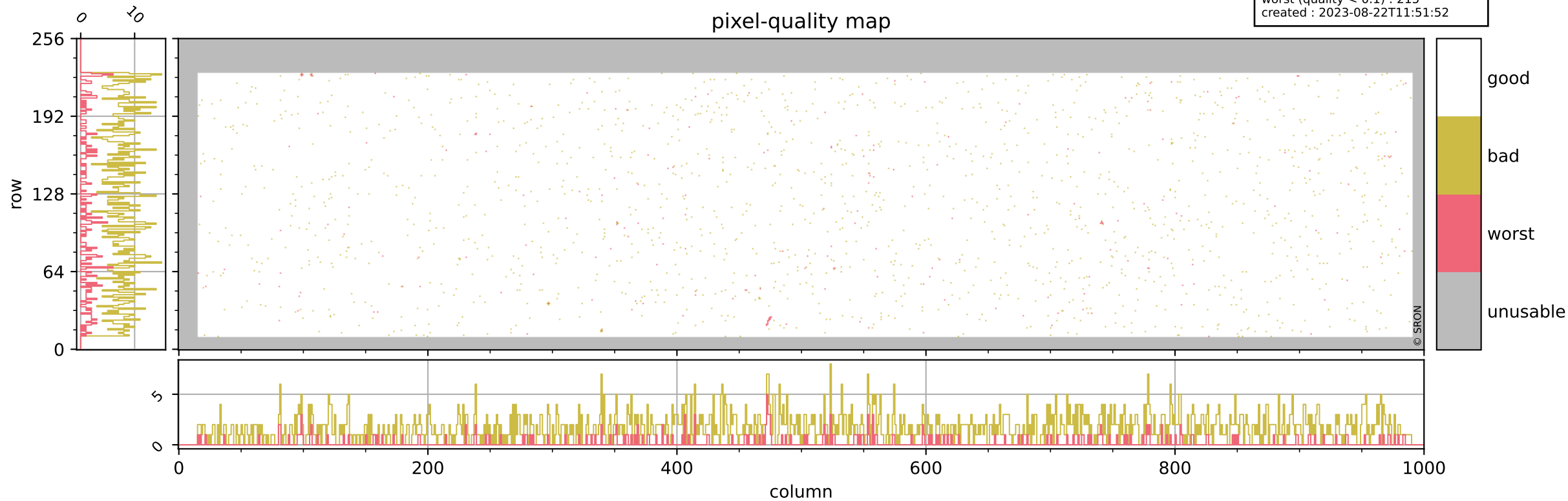


# Tropomi SWIR pixel quality (beta nominal)

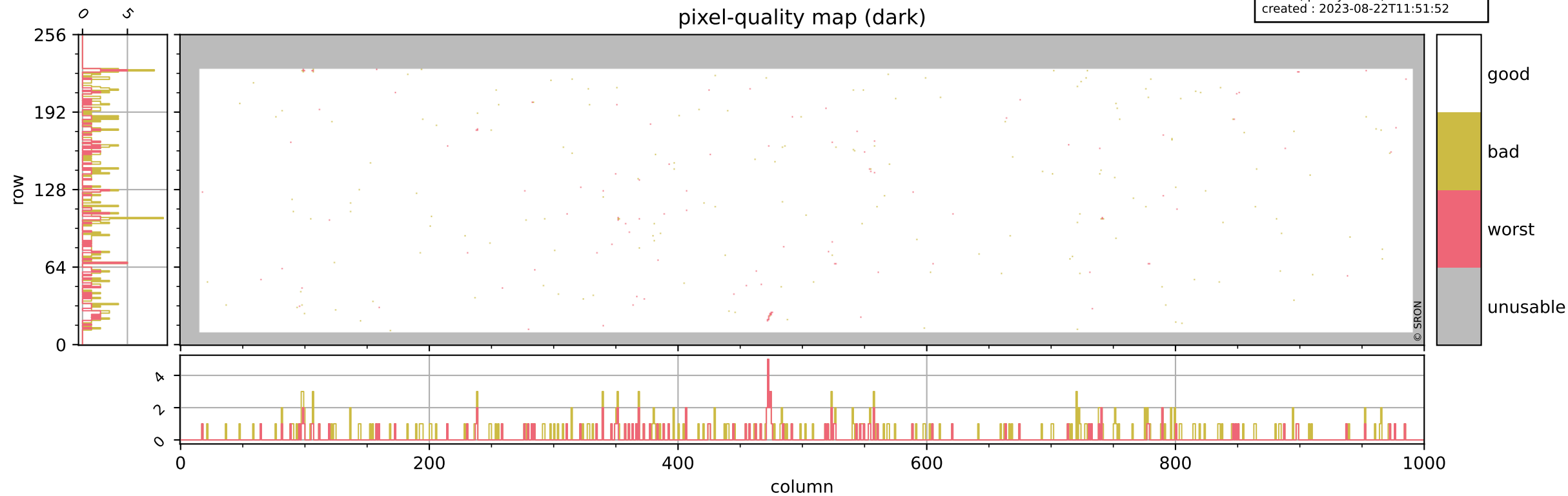
orbits : 16 in [3412, 3457]  
coverage : 2018-06-11 / 2018-06-13  
bad (quality < 0.8) : 1710  
worst (quality < 0.1) : 215  
created : 2023-08-22T11:51:52

## pixel-quality map



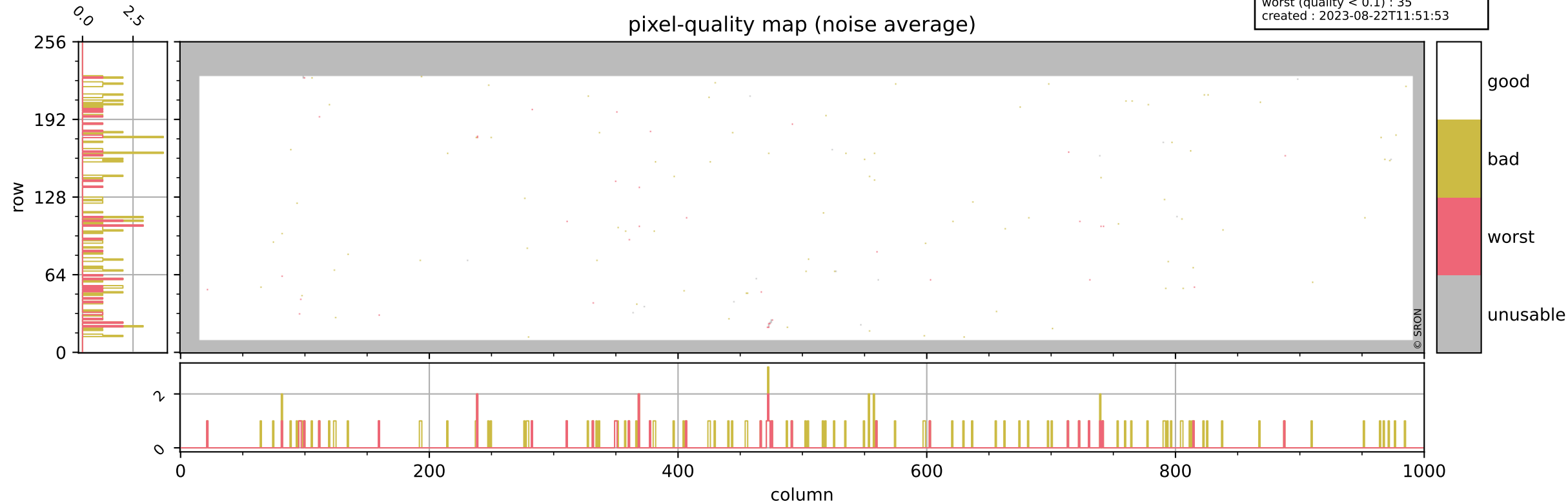
# Tropomi SWIR pixel quality (beta nominal)

orbits : 16 in [3412, 3457]  
coverage : 2018-06-11 / 2018-06-13  
bad (quality < 0.8) : 287  
worst (quality < 0.1) : 112  
created : 2023-08-22T11:51:52



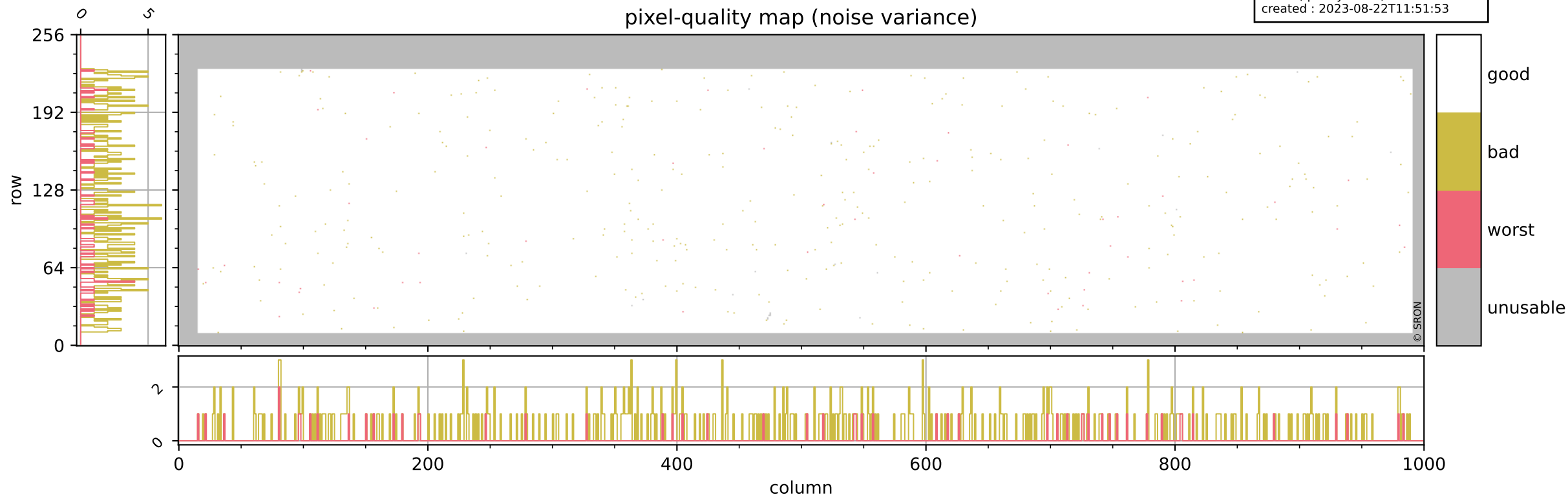
# Tropomi SWIR pixel quality (beta nominal)

orbits : 16 in [3412, 3457]  
coverage : 2018-06-11 / 2018-06-13  
bad (quality < 0.8) : 121  
worst (quality < 0.1) : 35  
created : 2023-08-22T11:51:53



# Tropomi SWIR pixel quality (beta nominal)

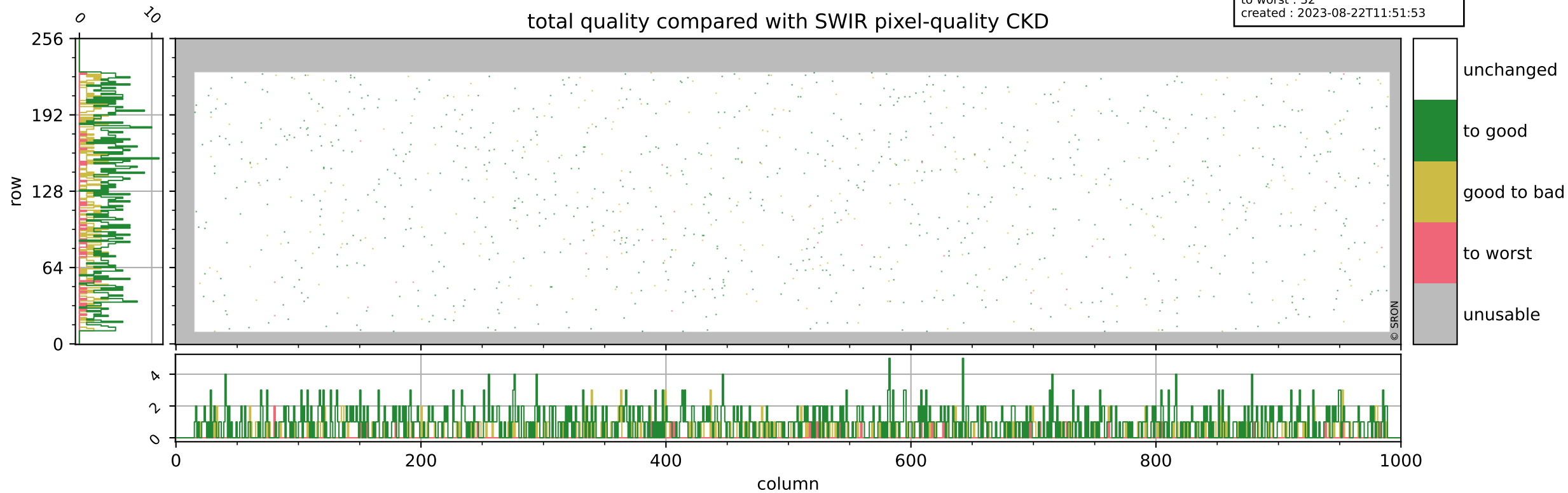
orbits : 16 in [3412, 3457]  
coverage : 2018-06-11 / 2018-06-13  
bad (quality < 0.8) : 402  
worst (quality < 0.1) : 53  
created : 2023-08-22T11:51:53



# Tropomi SWIR pixel quality (beta nominal)

orbits : 16 in [3412, 3457]  
coverage : 2018-06-11 / 2018-06-13  
to good : 856  
good to bad : 260  
to worst : 32  
created : 2023-08-22T11:51:53

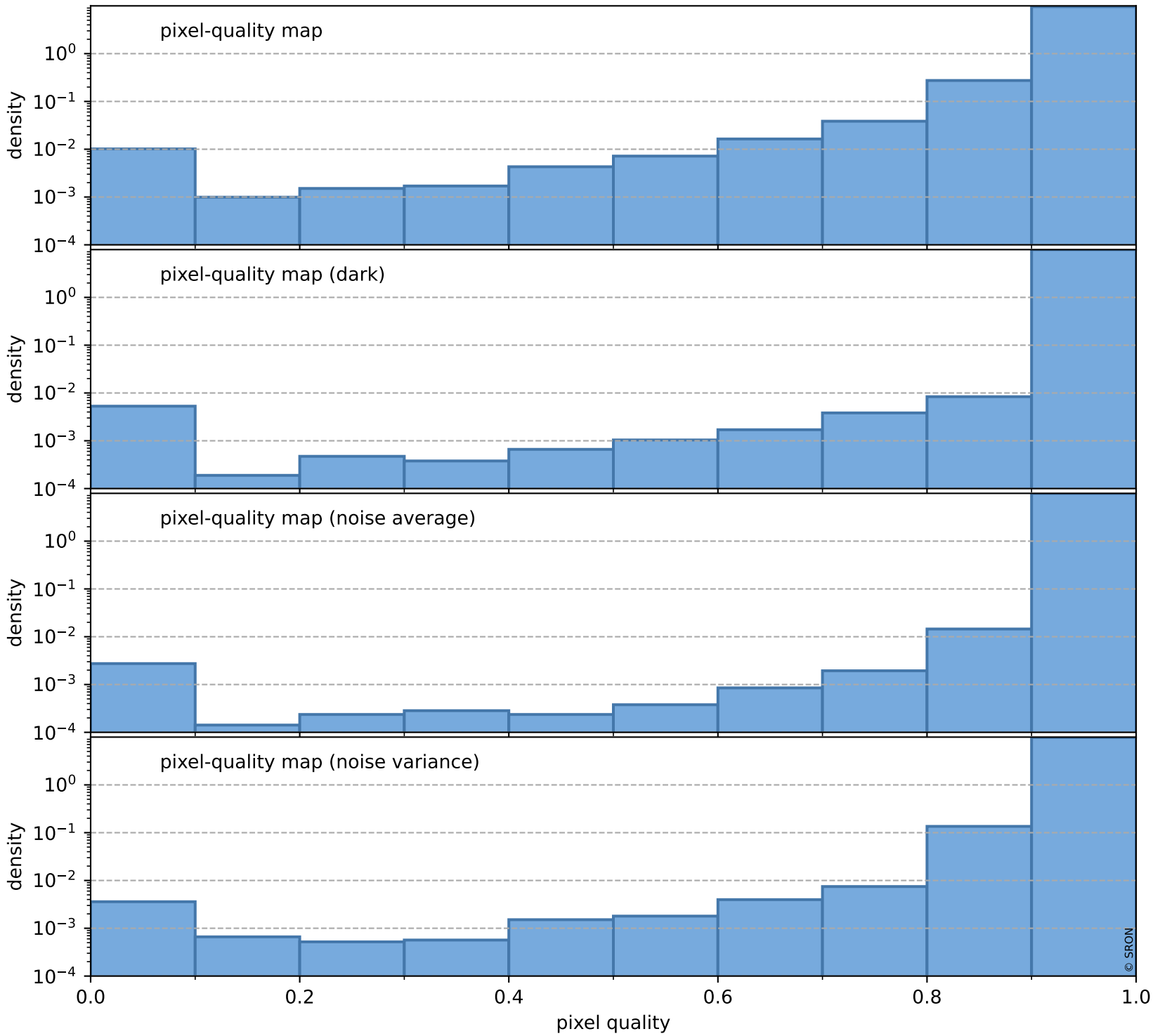
## total quality compared with SWIR pixel-quality CKD



# Tropomi SWIR pixel quality (beta nominal)

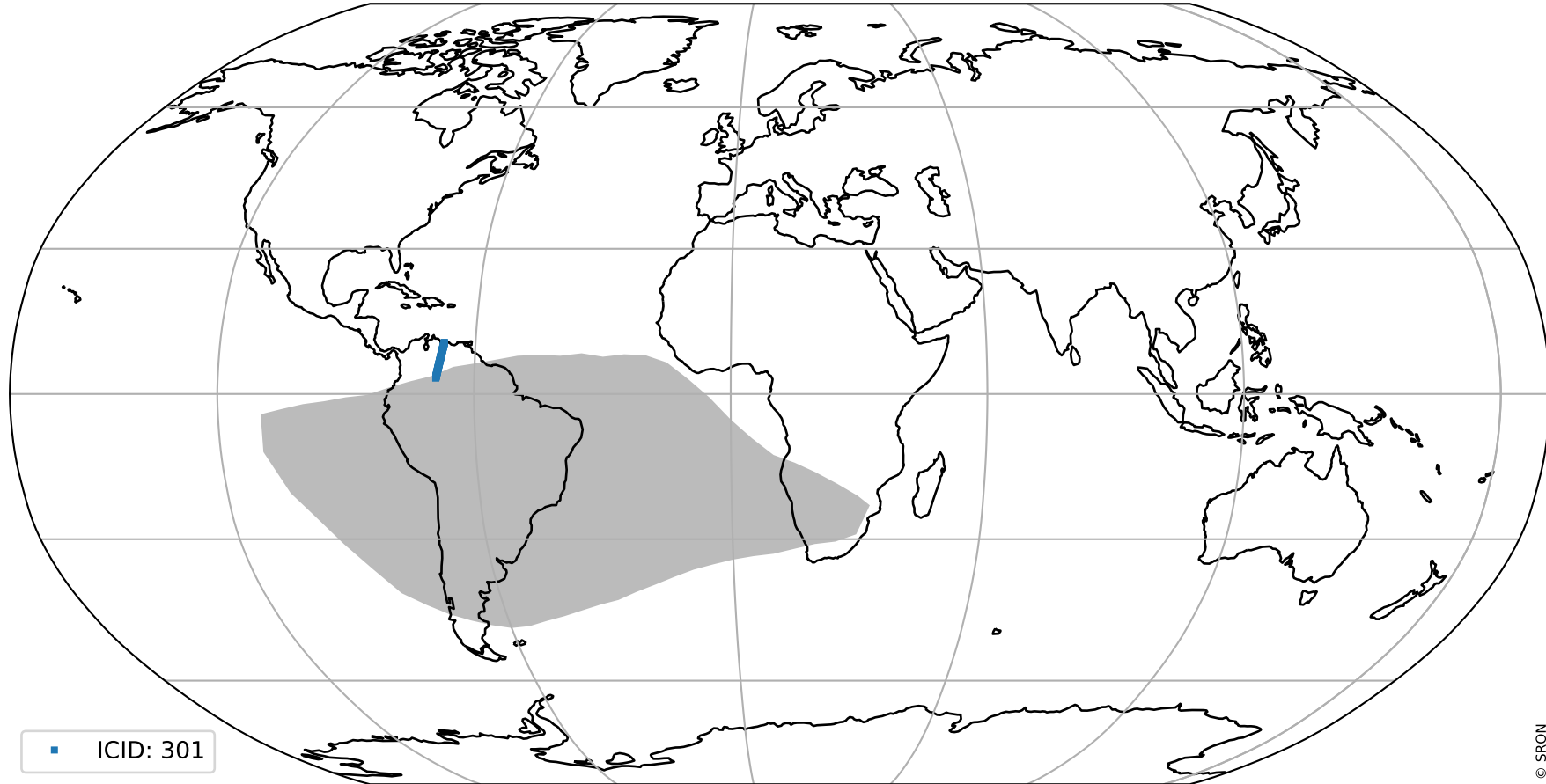
orbits : 16 in [3412, 3457]  
coverage : 2018-06-11 / 2018-06-13  
created : 2023-08-22T11:51:53

## Histograms of pixel-quality



# Tropomi SWIR pixel quality (beta nominal) ground-tracks of Sentinel-5P

orbits : 16 in [3412, 3457]  
coverage : 2018-06-11 / 2018-06-13  
created : 2023-08-22T11:51:54



# Tropomi SWIR pixel quality (beta nominal)

orbits : [1867, 3457]  
coverage : 2018-02-20 / 2018-06-13  
created : 2023-08-22T11:51:54

## trend of pixel quality & temperatures

