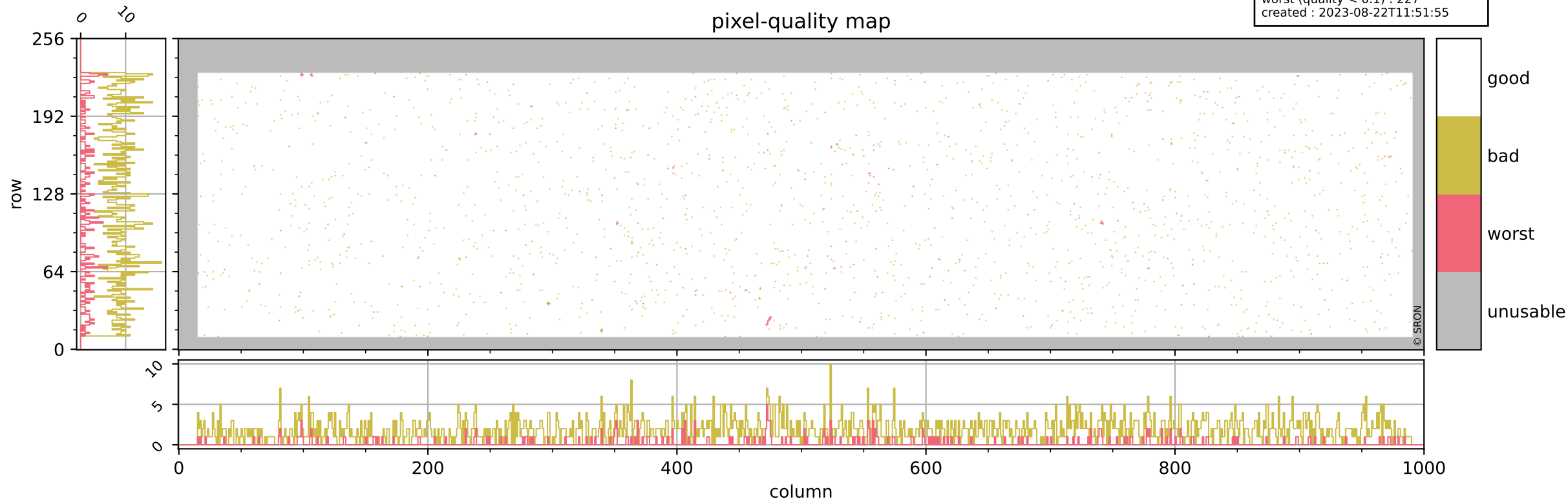


Tropomi SWIR pixel quality (beta nominal)

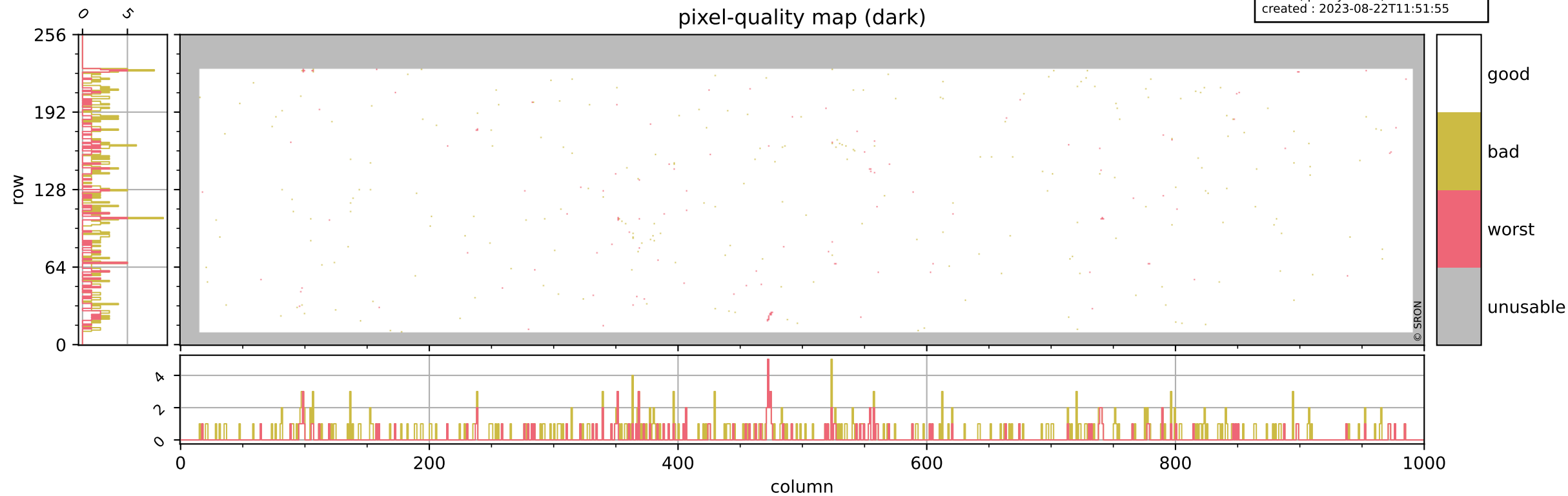
orbits : 16 in [3457, 3502]
coverage : 2018-06-14 / 2018-06-17
bad (quality < 0.8) : 1907
worst (quality < 0.1) : 227
created : 2023-08-22T11:51:55

pixel-quality map



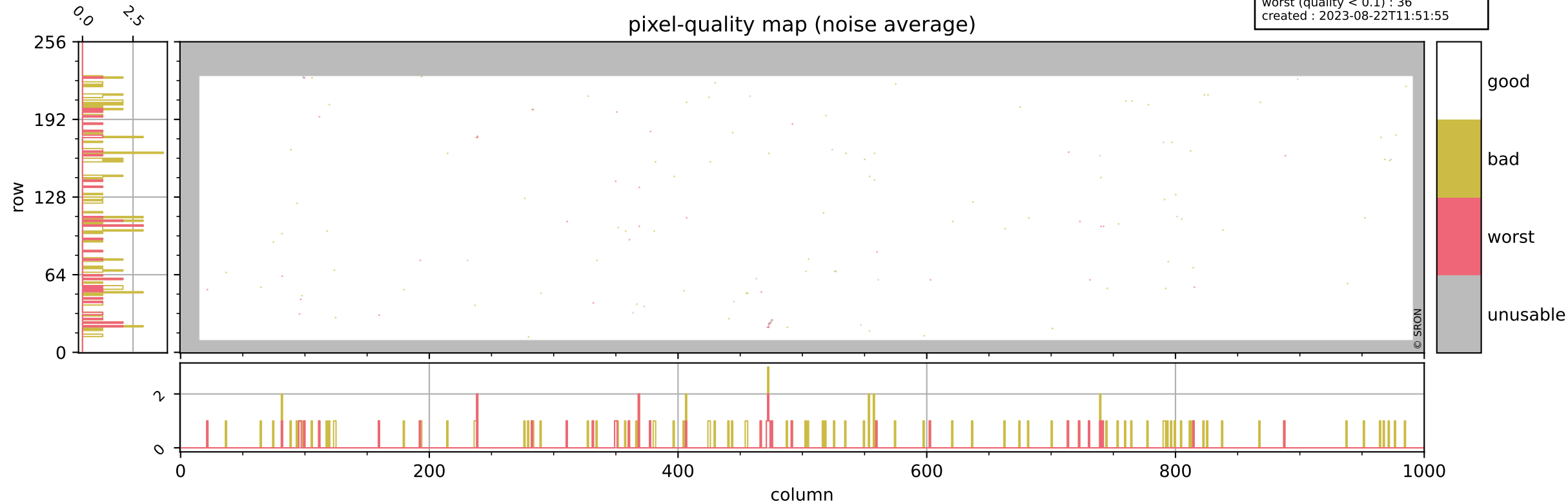
Tropomi SWIR pixel quality (beta nominal)

orbits : 16 in [3457, 3502]
coverage : 2018-06-14 / 2018-06-17
bad (quality < 0.8) : 364
worst (quality < 0.1) : 128
created : 2023-08-22T11:51:55



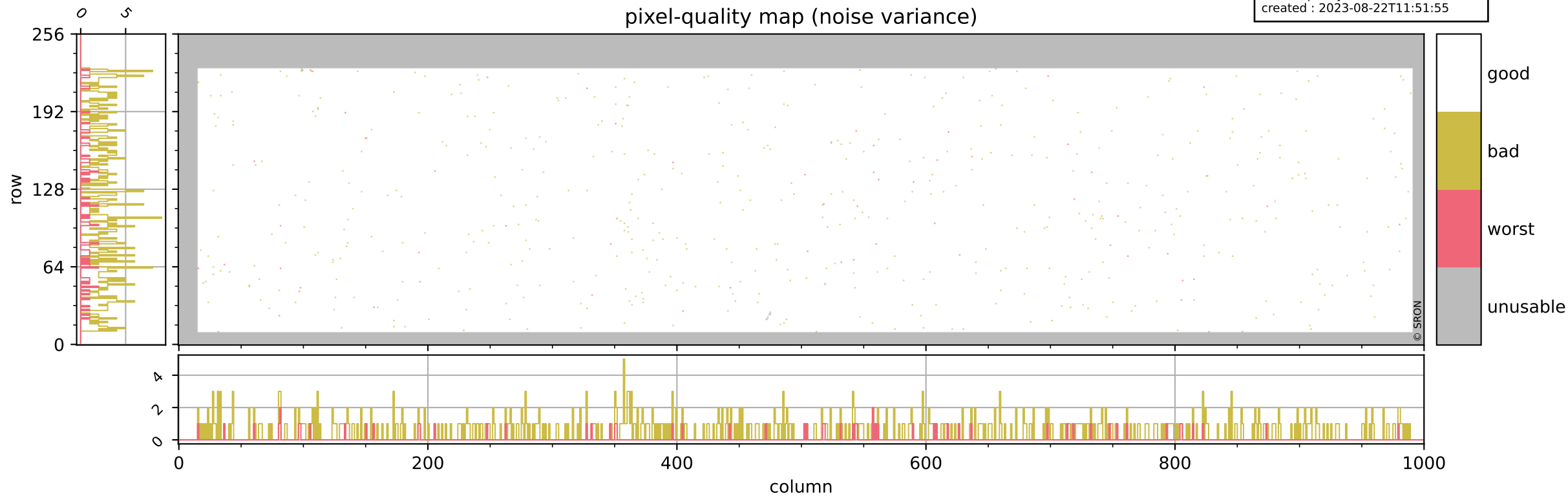
Tropomi SWIR pixel quality (beta nominal)

orbits : 16 in [3457, 3502]
coverage : 2018-06-14 / 2018-06-17
bad (quality < 0.8) : 120
worst (quality < 0.1) : 36
created : 2023-08-22T11:51:55



Tropomi SWIR pixel quality (beta nominal)

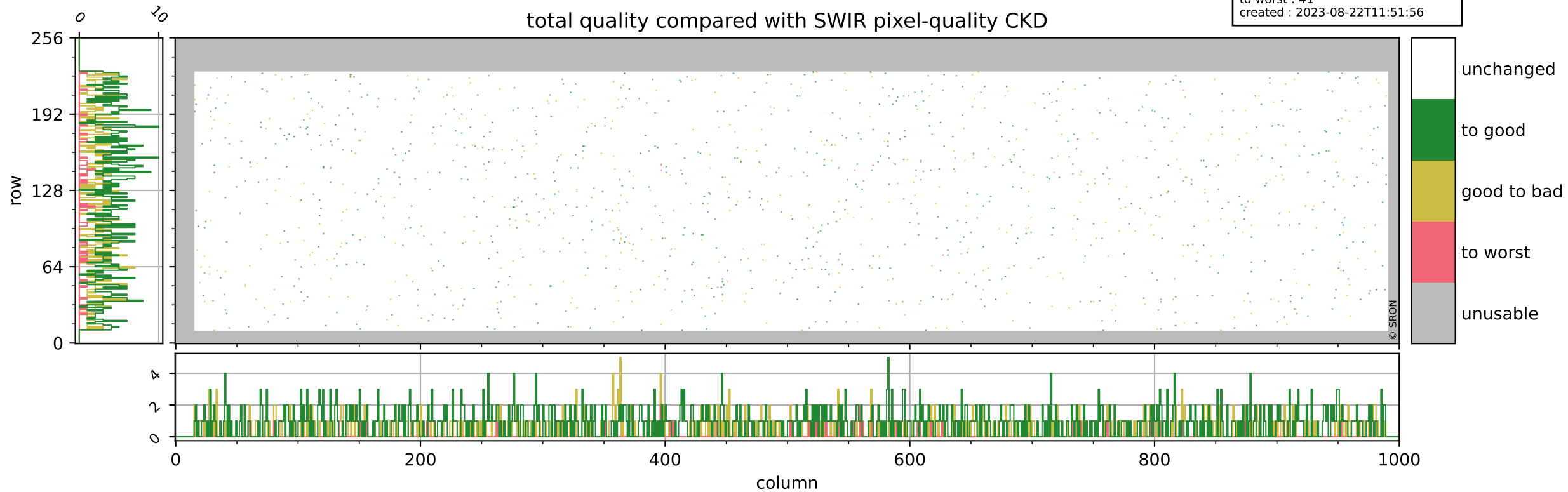
orbits : 16 in [3457, 3502]
coverage : 2018-06-14 / 2018-06-17
bad (quality < 0.8) : 544
worst (quality < 0.1) : 58
created : 2023-08-22T11:51:55



Tropomi SWIR pixel quality (beta nominal)

orbits : 16 in [3457, 3502]
coverage : 2018-06-14 / 2018-06-17
to good : 834
good to bad : 434
to worst : 41
created : 2023-08-22T11:51:56

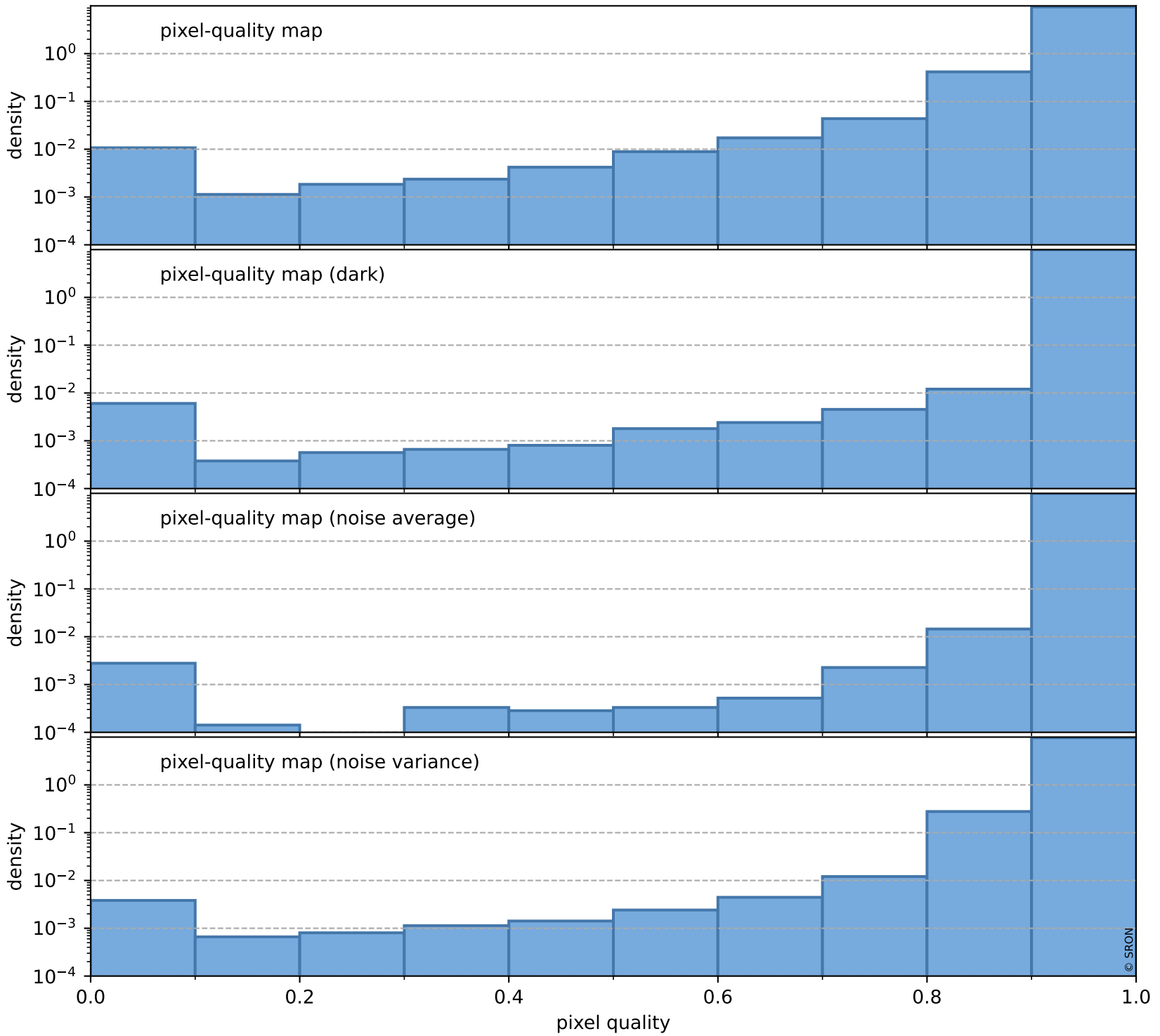
total quality compared with SWIR pixel-quality CKD



Tropomi SWIR pixel quality (beta nominal)

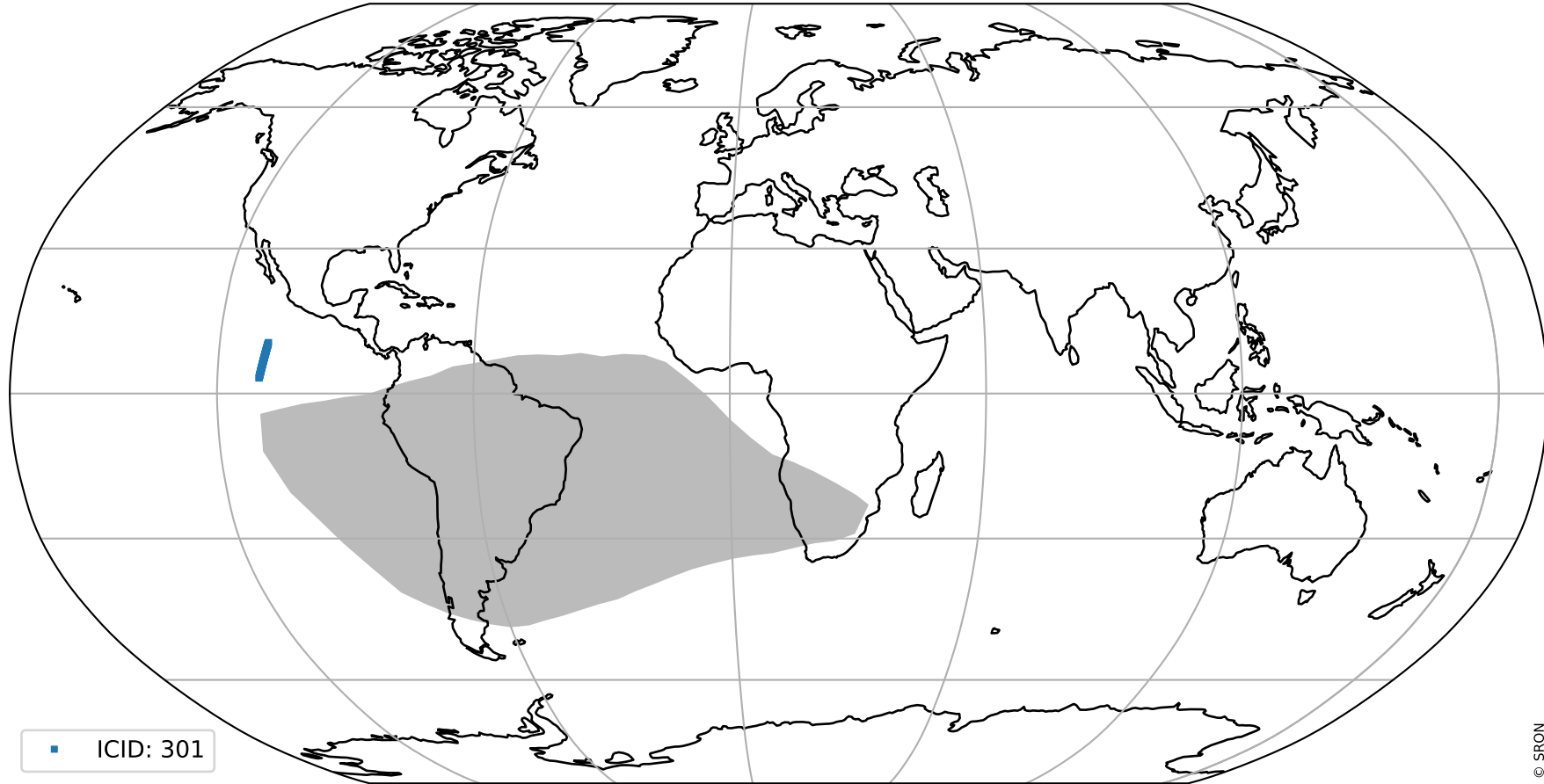
orbits : 16 in [3457, 3502]
coverage : 2018-06-14 / 2018-06-17
created : 2023-08-22T11:51:56

Histograms of pixel-quality



Tropomi SWIR pixel quality (beta nominal) ground-tracks of Sentinel-5P

orbits : 16 in [3457, 3502]
coverage : 2018-06-14 / 2018-06-17
created : 2023-08-22T11:51:56



Tropomi SWIR pixel quality (beta nominal)

orbits : [1867, 3457]
coverage : 2018-02-20 / 2018-06-13
created : 2023-08-22T11:51:57

trend of pixel quality & temperatures

