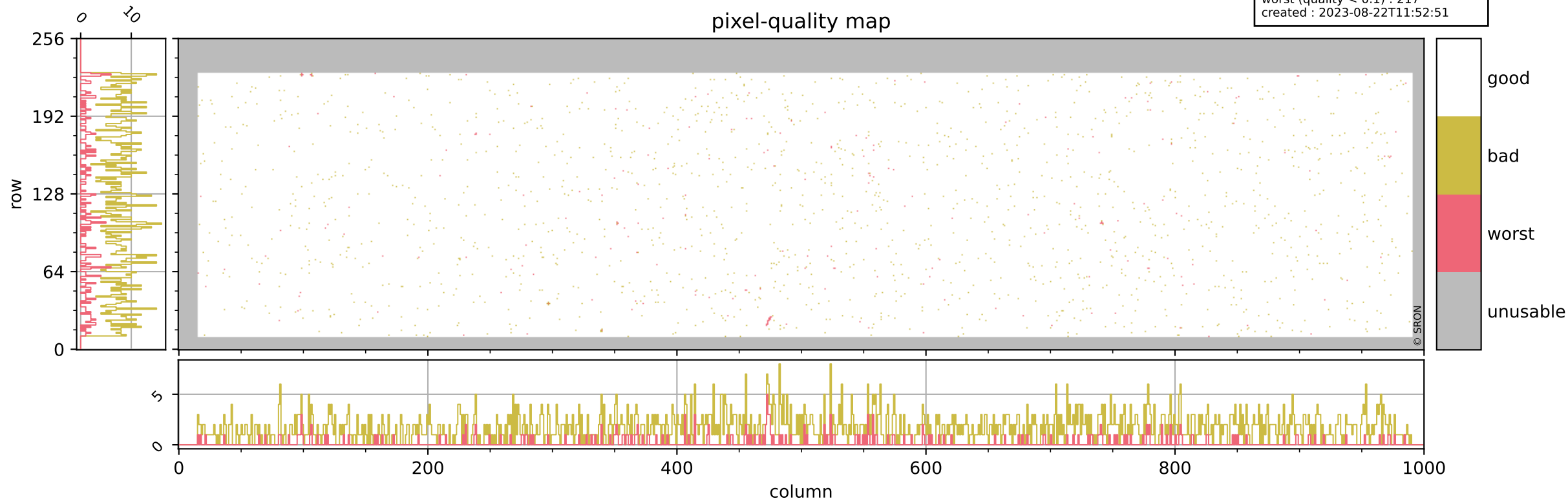


# Tropomi SWIR pixel quality (beta nominal)

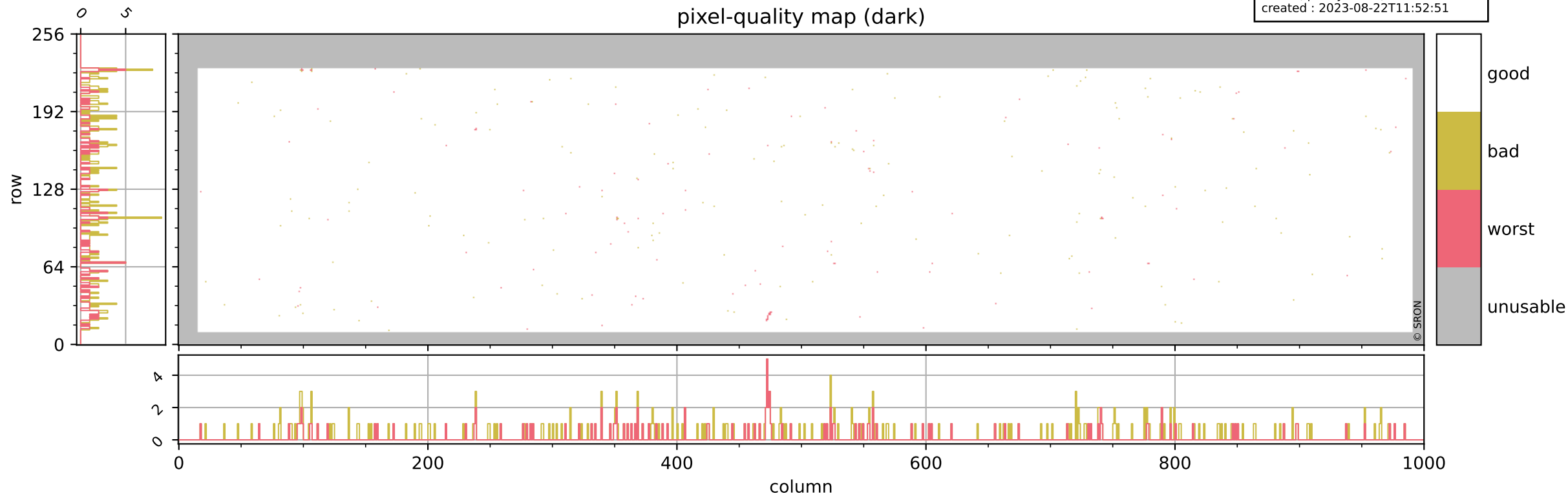
orbits : 20 in [4492, 4537]  
coverage : 2018-08-26 / 2018-08-29  
bad (quality < 0.8) : 1719  
worst (quality < 0.1) : 217  
created : 2023-08-22T11:52:51

## pixel-quality map



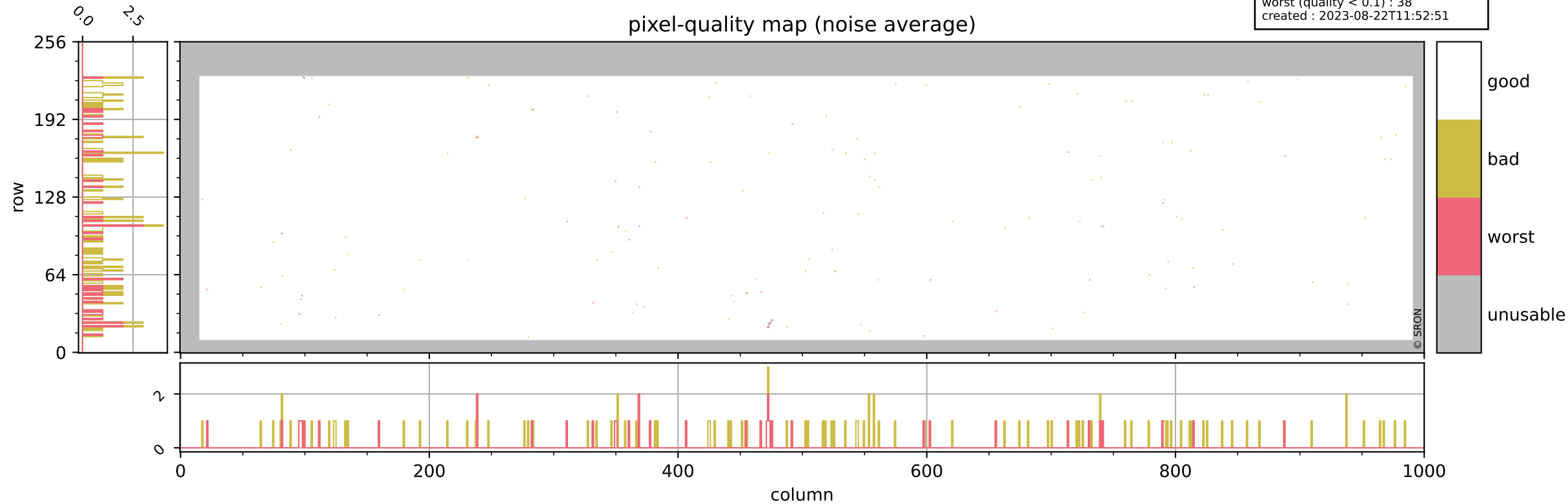
# Tropomi SWIR pixel quality (beta nominal)

orbits : 20 in [4492, 4537]  
coverage : 2018-08-26 / 2018-08-29  
bad (quality < 0.8) : 289  
worst (quality < 0.1) : 119  
created : 2023-08-22T11:52:51



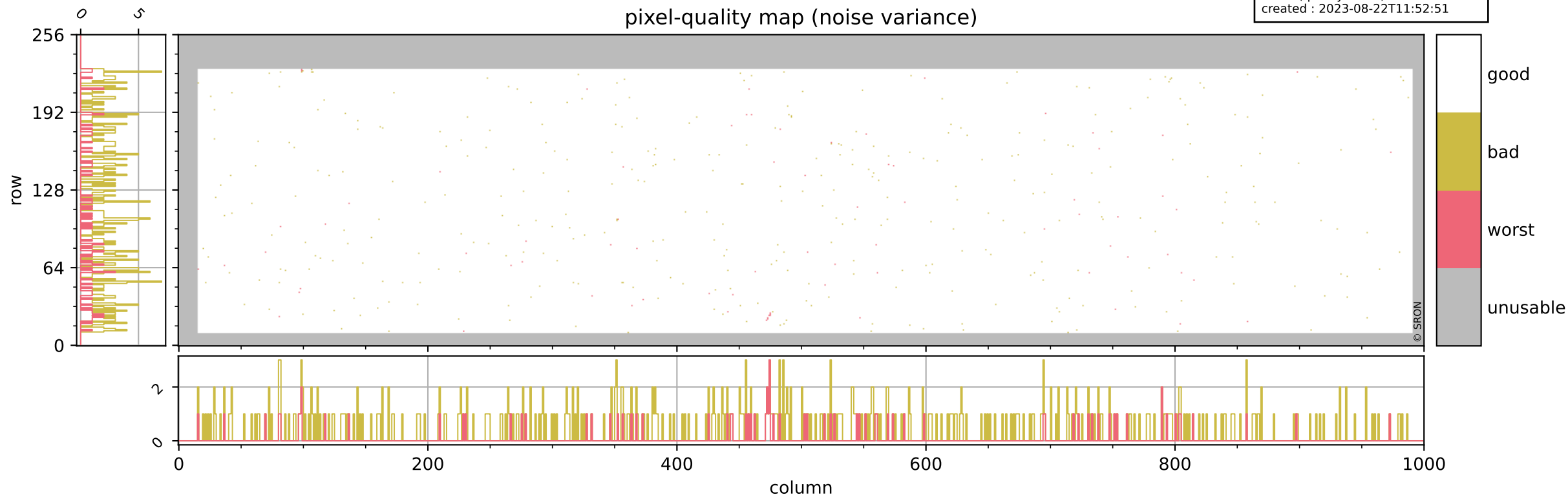
# Tropomi SWIR pixel quality (beta nominal)

orbits : 20 in [4492, 4537]  
coverage : 2018-08-26 / 2018-08-29  
bad (quality < 0.8) : 129  
worst (quality < 0.1) : 38  
created : 2023-08-22T11:52:51



# Tropomi SWIR pixel quality (beta nominal)

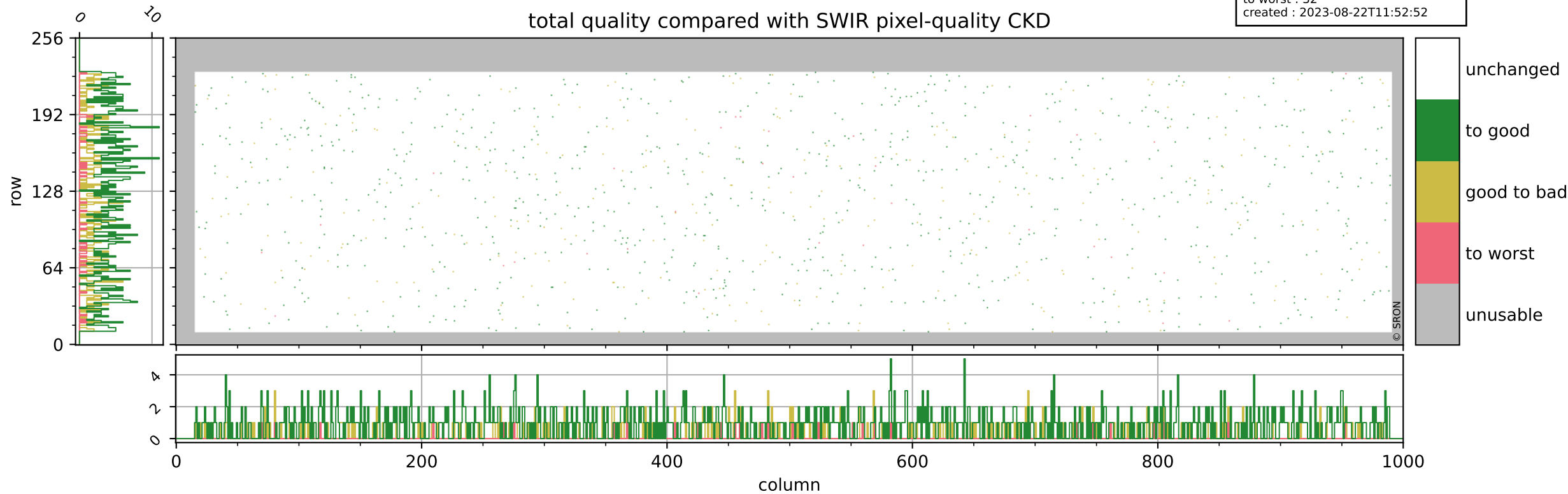
orbits : 20 in [4492, 4537]  
coverage : 2018-08-26 / 2018-08-29  
bad (quality < 0.8) : 432  
worst (quality < 0.1) : 77  
created : 2023-08-22T11:52:51



# Tropomi SWIR pixel quality (beta nominal)

orbits : 20 in [4492, 4537]  
coverage : 2018-08-26 / 2018-08-29  
to good : 865  
good to bad : 279  
to worst : 32  
created : 2023-08-22T11:52:52

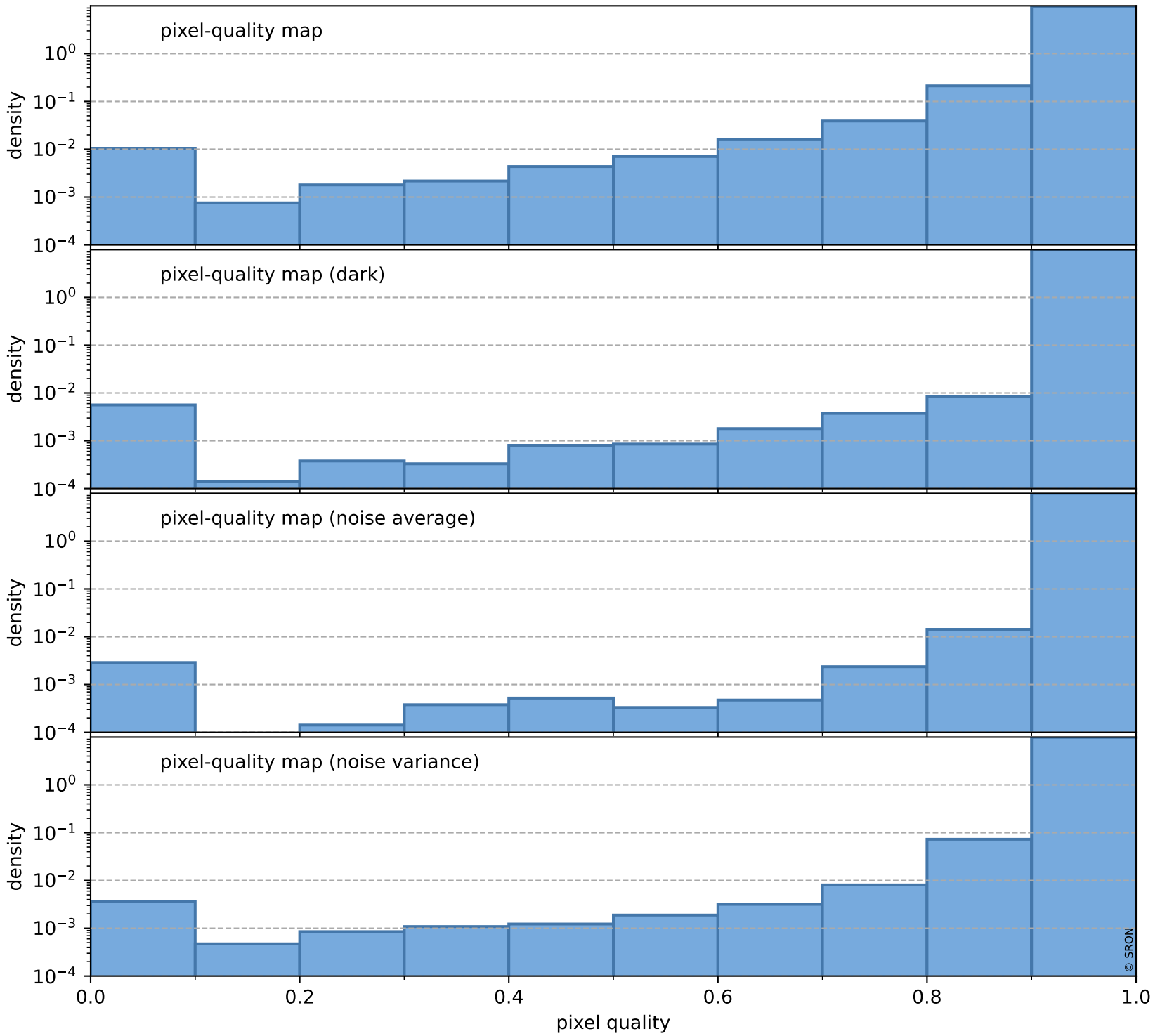
## total quality compared with SWIR pixel-quality CKD



# Tropomi SWIR pixel quality (beta nominal)

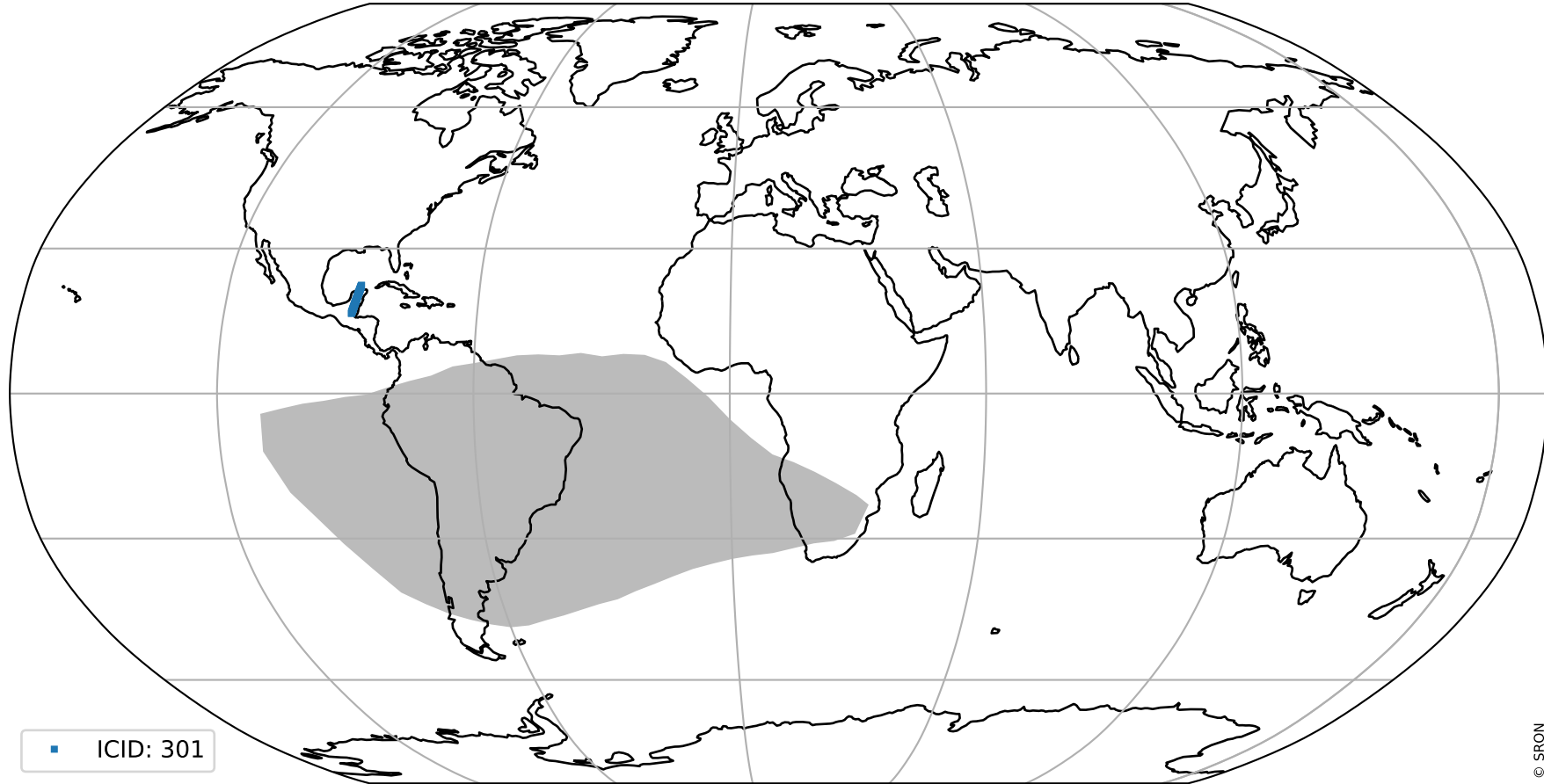
orbits : 20 in [4492, 4537]  
coverage : 2018-08-26 / 2018-08-29  
created : 2023-08-22T11:52:52

## Histograms of pixel-quality



# Tropomi SWIR pixel quality (beta nominal) ground-tracks of Sentinel-5P

orbits : 20 in [4492, 4537]  
coverage : 2018-08-26 / 2018-08-29  
created : 2023-08-22T11:52:52



# Tropomi SWIR pixel quality (beta nominal)

orbits : [1867, 4537]  
coverage : 2018-02-20 / 2018-08-29  
created : 2023-08-22T11:52:53

## trend of pixel quality & temperatures

