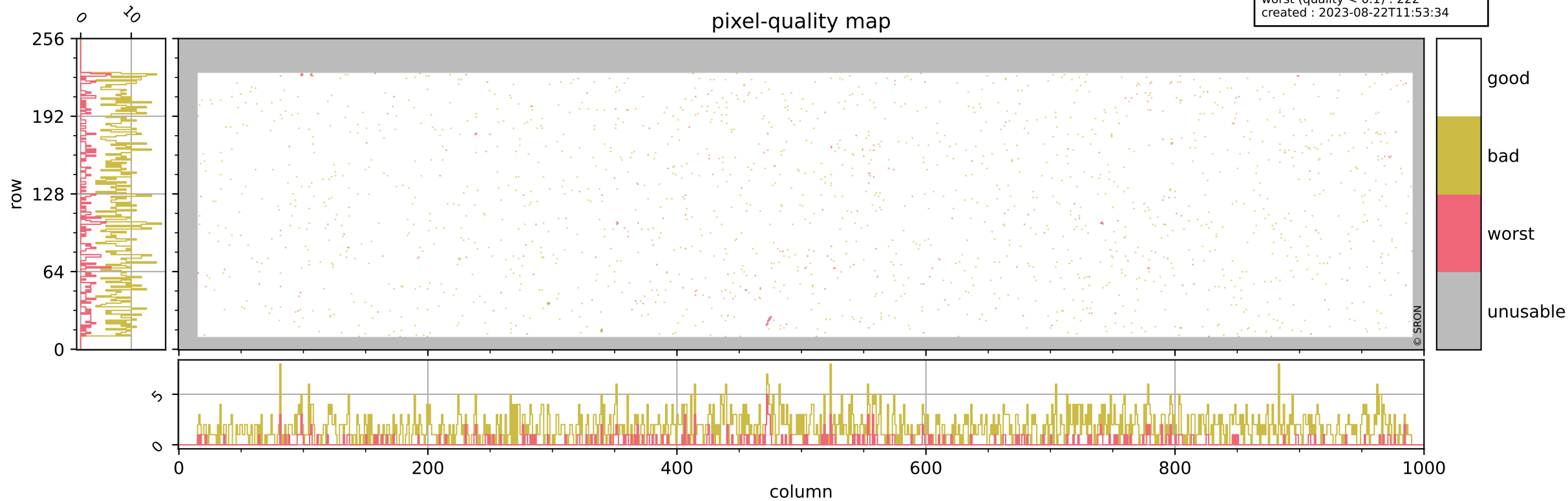


Tropomi SWIR pixel quality (beta nominal)

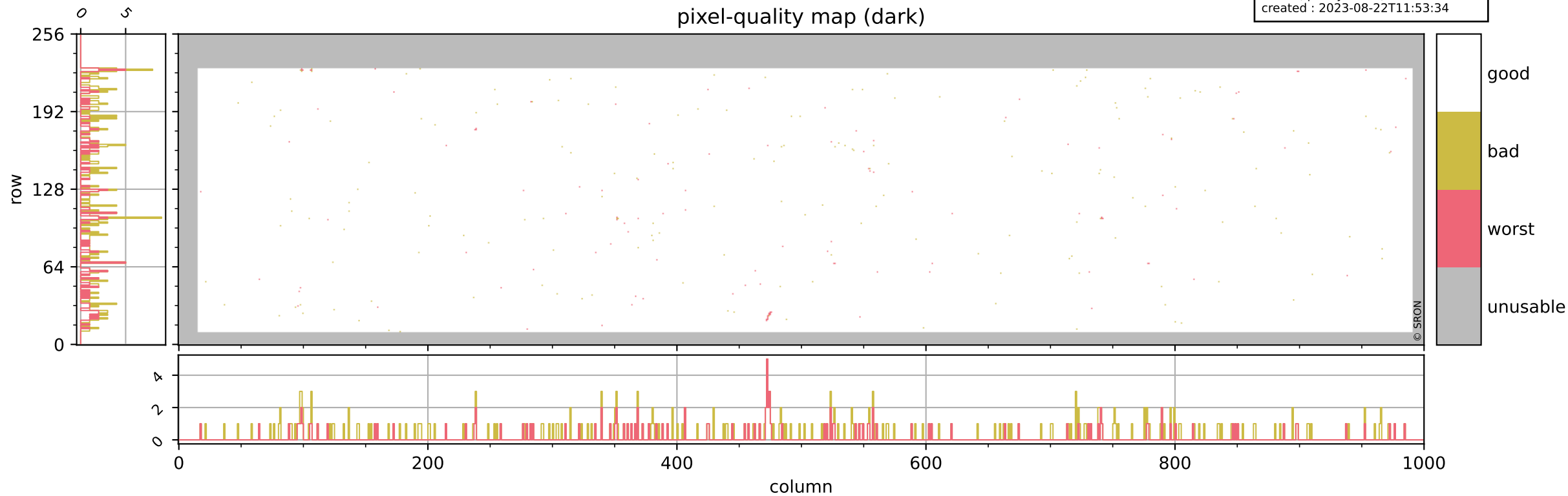
orbits : 20 in [5302, 5347]
coverage : 2018-10-22 / 2018-10-25
bad (quality < 0.8) : 1743
worst (quality < 0.1) : 222
created : 2023-08-22T11:53:34

pixel-quality map



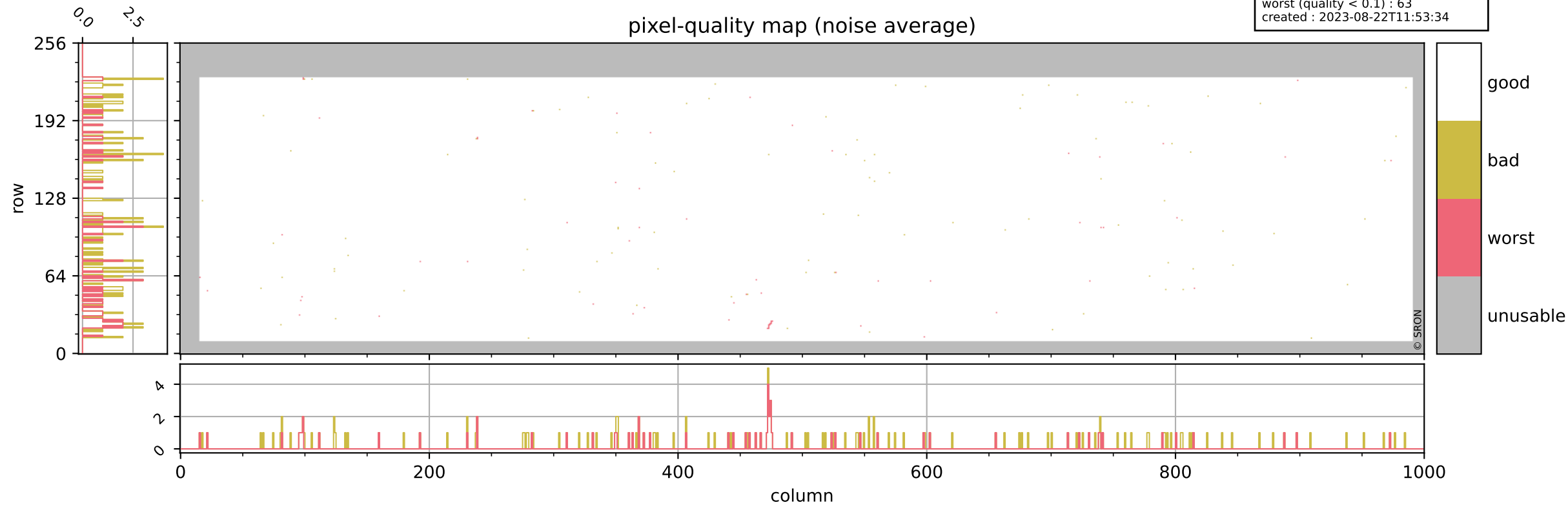
Tropomi SWIR pixel quality (beta nominal)

orbits : 20 in [5302, 5347]
coverage : 2018-10-22 / 2018-10-25
bad (quality < 0.8) : 292
worst (quality < 0.1) : 115
created : 2023-08-22T11:53:34



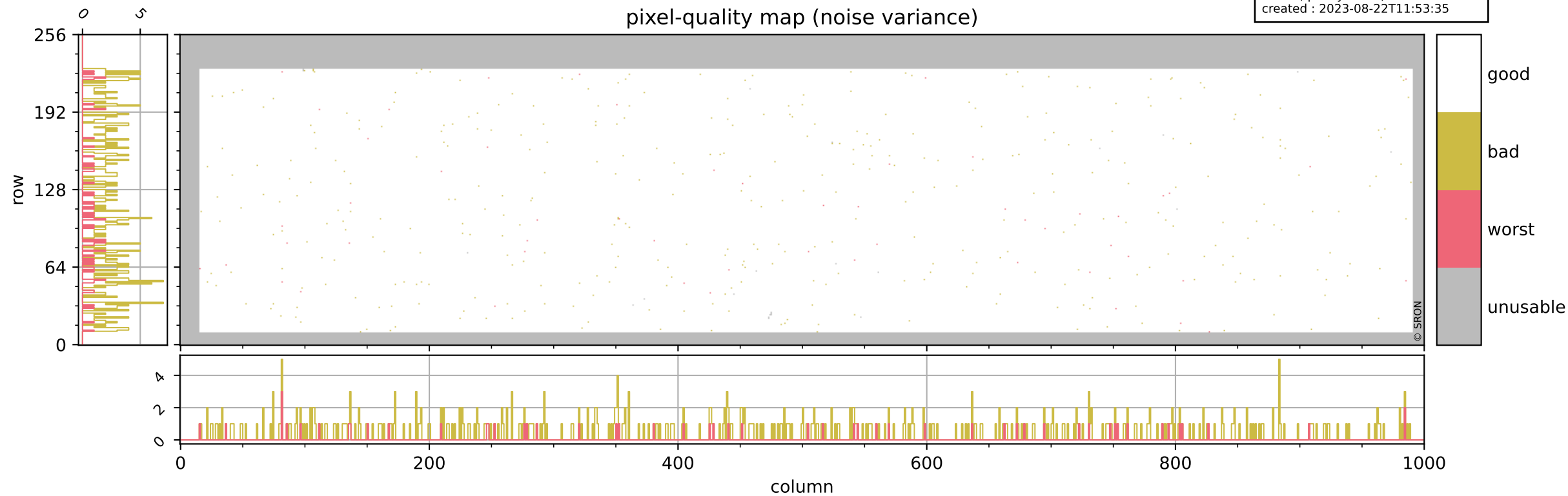
Tropomi SWIR pixel quality (beta nominal)

orbits : 20 in [5302, 5347]
coverage : 2018-10-22 / 2018-10-25
bad (quality < 0.8) : 158
worst (quality < 0.1) : 63
created : 2023-08-22T11:53:34



Tropomi SWIR pixel quality (beta nominal)

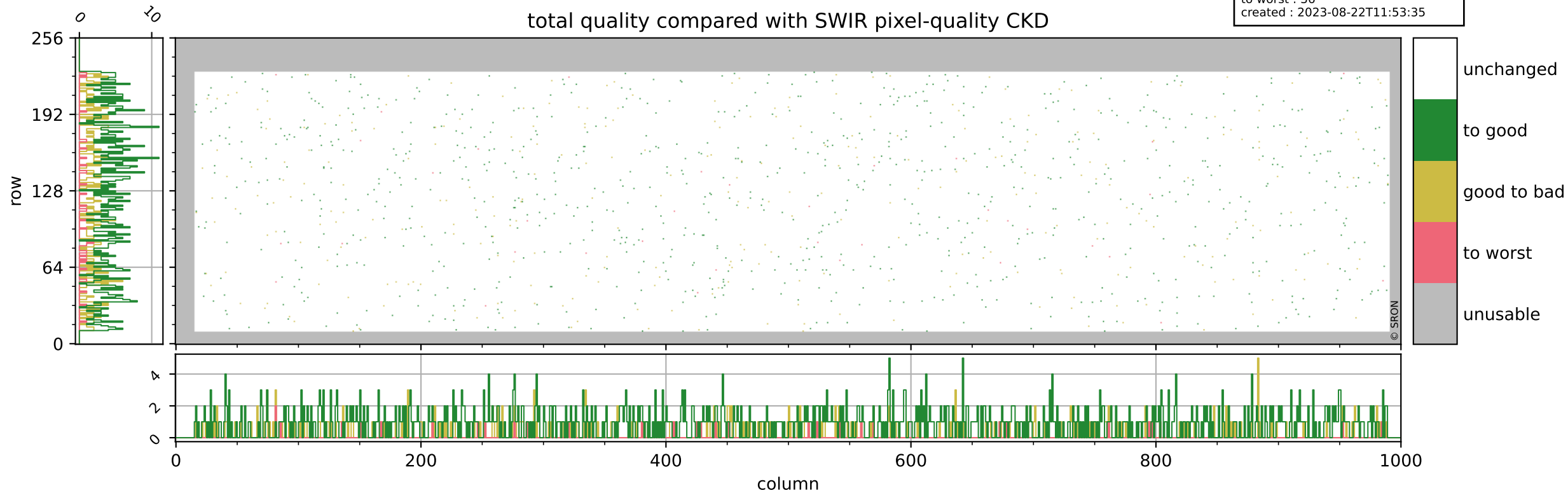
orbits : 20 in [5302, 5347]
coverage : 2018-10-22 / 2018-10-25
bad (quality < 0.8) : 436
worst (quality < 0.1) : 54
created : 2023-08-22T11:53:35



Tropomi SWIR pixel quality (beta nominal)

orbits : 20 in [5302, 5347]
coverage : 2018-10-22 / 2018-10-25
to good : 872
good to bad : 304
to worst : 36
created : 2023-08-22T11:53:35

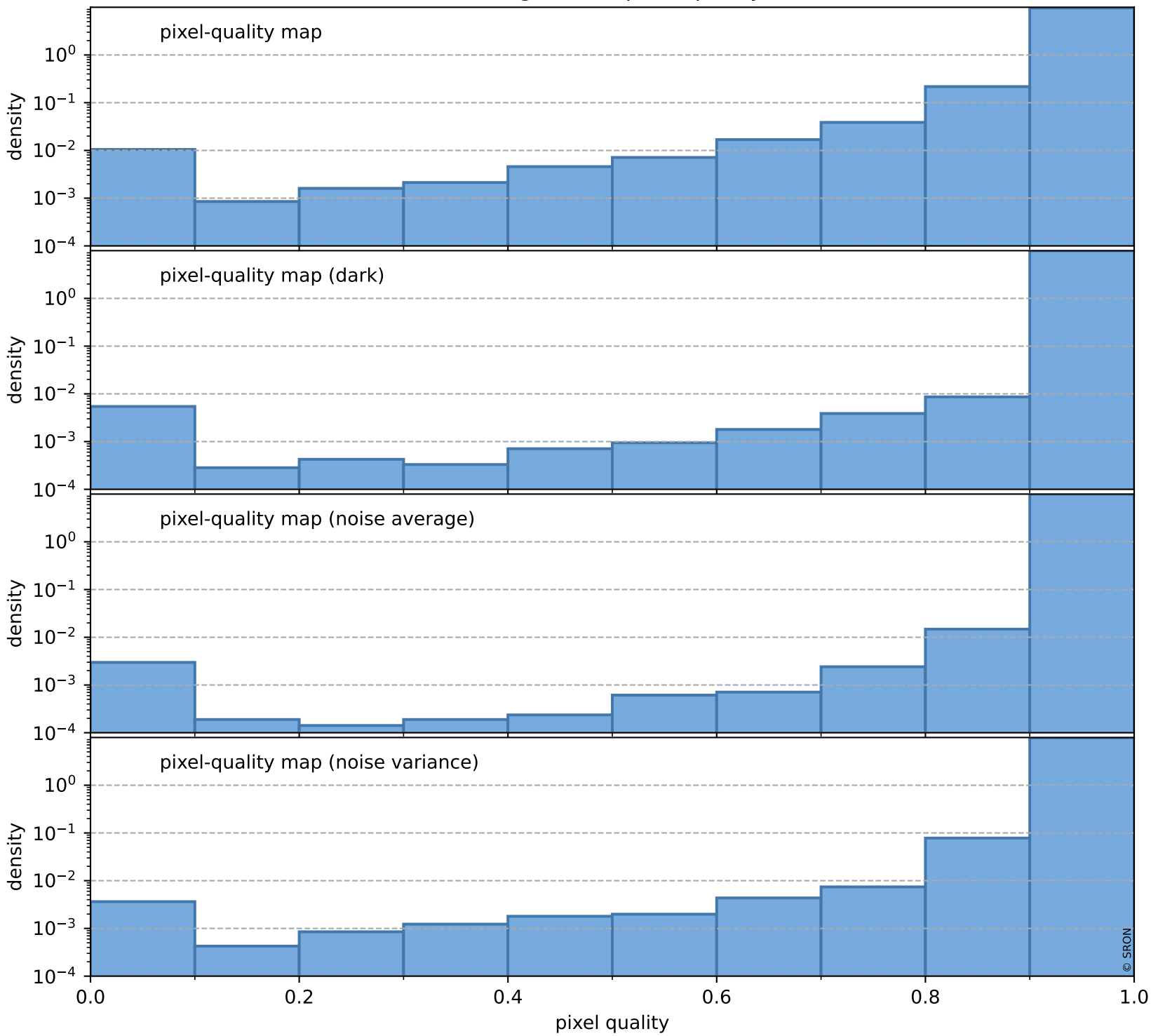
total quality compared with SWIR pixel-quality CKD



Tropomi SWIR pixel quality (beta nominal)

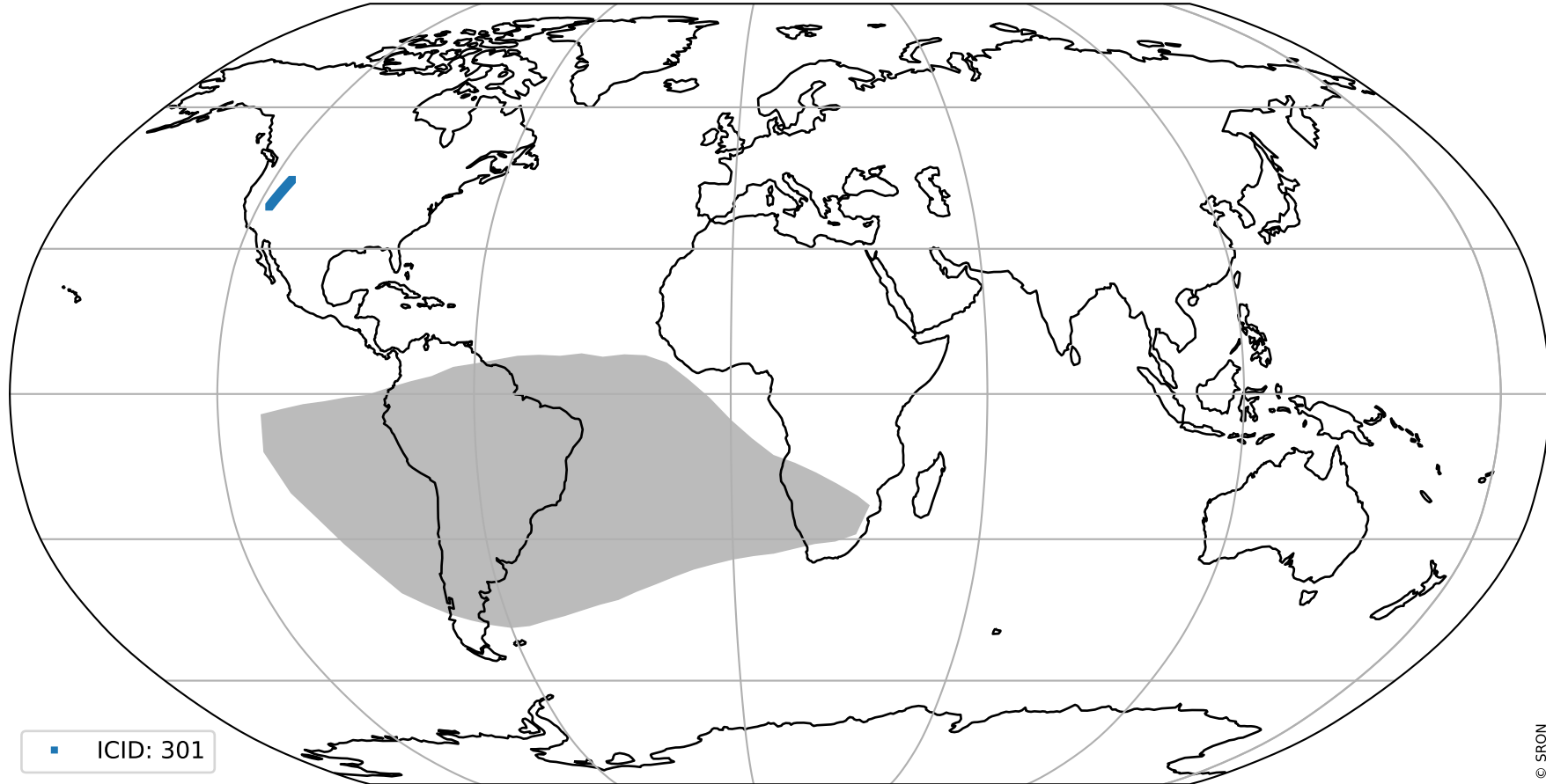
orbits : 20 in [5302, 5347]
coverage : 2018-10-22 / 2018-10-25
created : 2023-08-22T11:53:35

Histograms of pixel-quality



Tropomi SWIR pixel quality (beta nominal) ground-tracks of Sentinel-5P

orbits : 20 in [5302, 5347]
coverage : 2018-10-22 / 2018-10-25
created : 2023-08-22T11:53:36



■ ICID: 301

Tropomi SWIR pixel quality (beta nominal)

orbits : [1867, 5347]
coverage : 2018-02-20 / 2018-10-25
created : 2023-08-22T11:53:36

trend of pixel quality & temperatures

