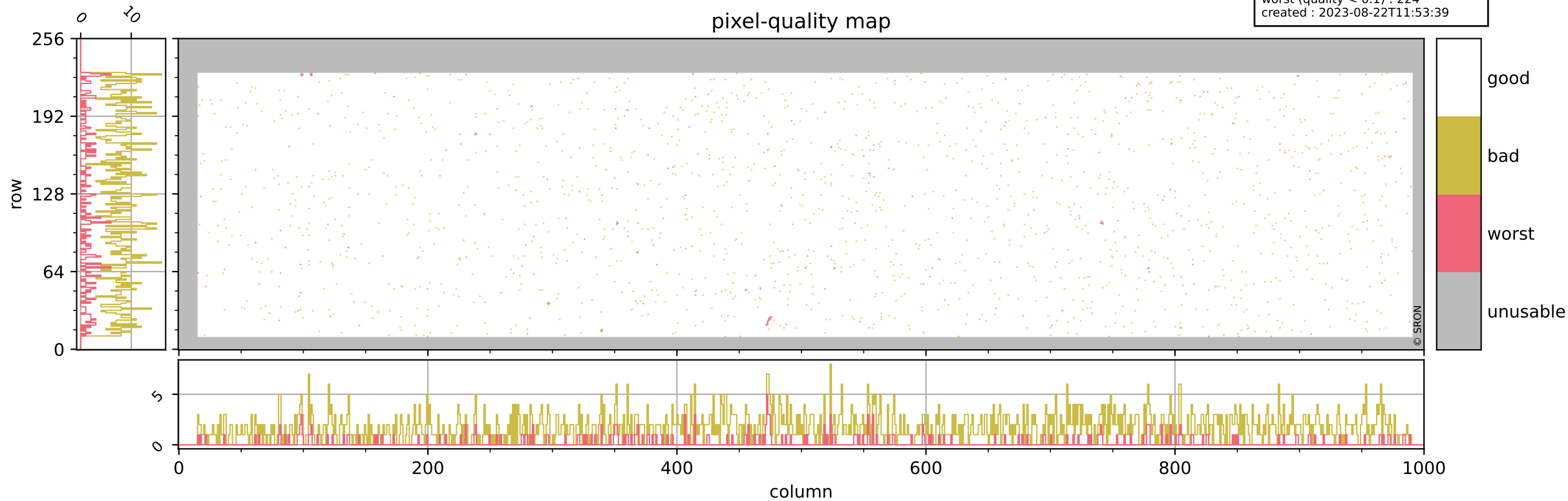


# Tropomi SWIR pixel quality (beta nominal)

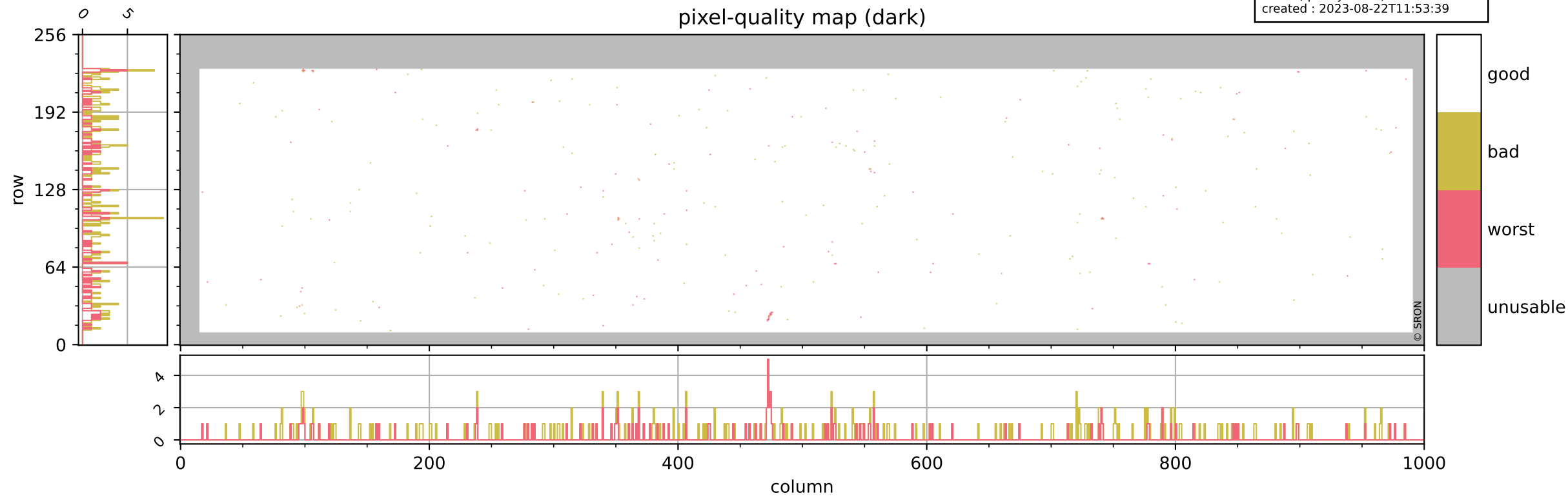
orbits : 18 in [5392, 5437]  
coverage : 2018-10-28 / 2018-10-31  
bad (quality < 0.8) : 1754  
worst (quality < 0.1) : 224  
created : 2023-08-22T11:53:39

## pixel-quality map



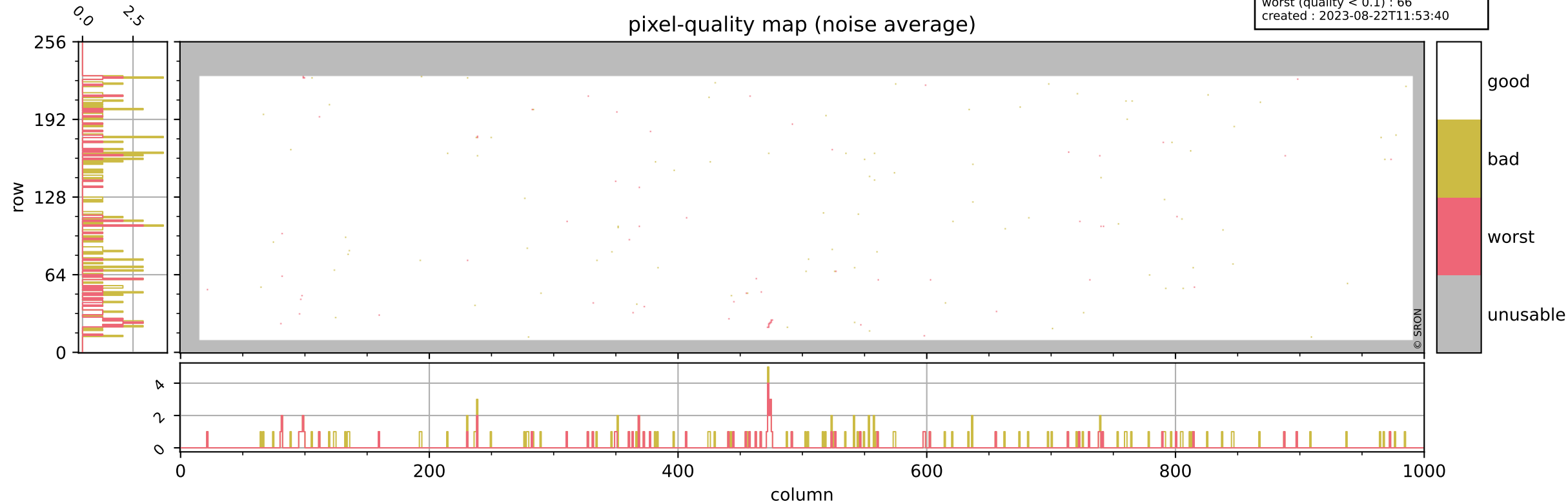
# Tropomi SWIR pixel quality (beta nominal)

orbits : 18 in [5392, 5437]  
coverage : 2018-10-28 / 2018-10-31  
bad (quality < 0.8) : 294  
worst (quality < 0.1) : 116  
created : 2023-08-22T11:53:39



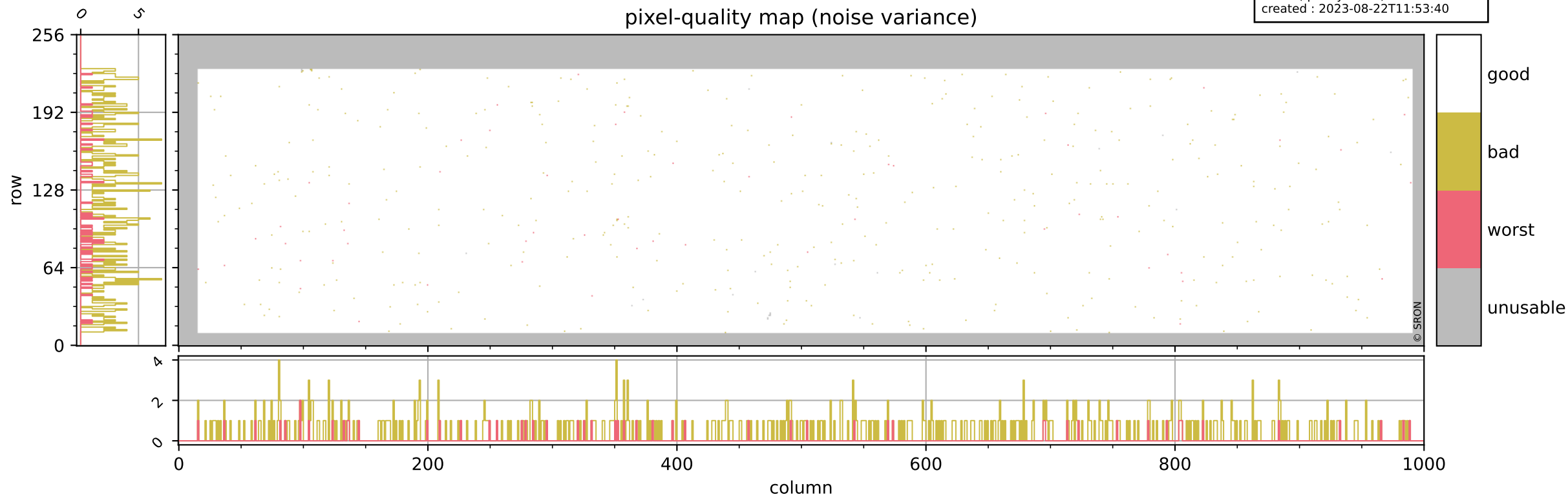
# Tropomi SWIR pixel quality (beta nominal)

orbits : 18 in [5392, 5437]  
coverage : 2018-10-28 / 2018-10-31  
bad (quality < 0.8) : 159  
worst (quality < 0.1) : 66  
created : 2023-08-22T11:53:40



# Tropomi SWIR pixel quality (beta nominal)

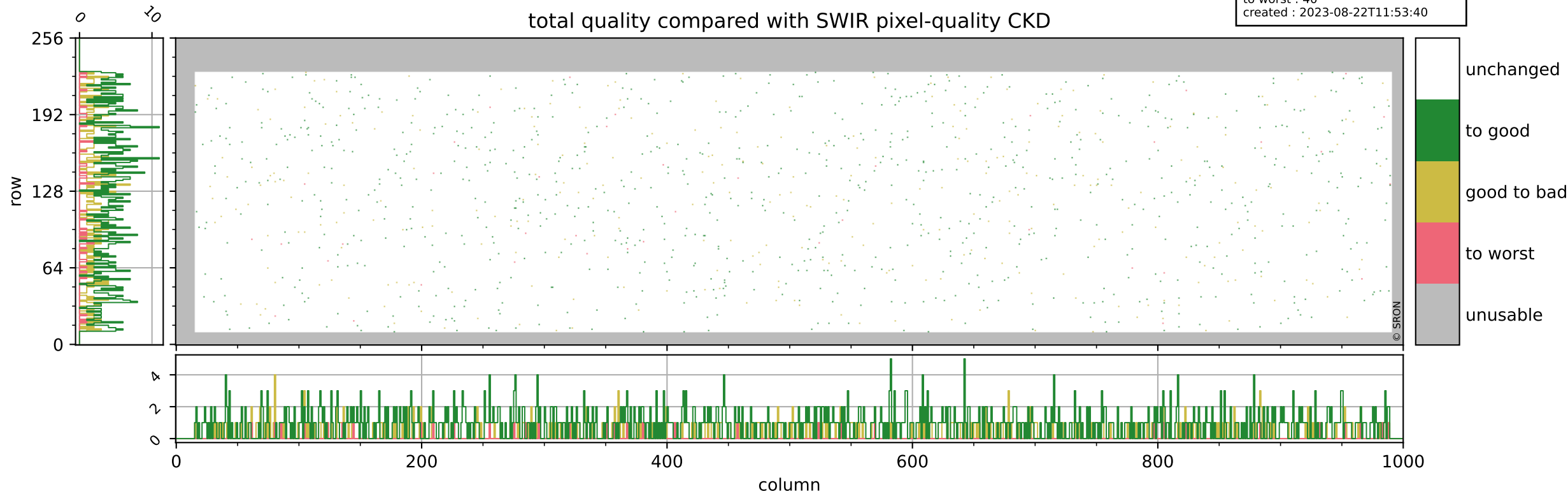
orbits : 18 in [5392, 5437]  
coverage : 2018-10-28 / 2018-10-31  
bad (quality < 0.8) : 454  
worst (quality < 0.1) : 54  
created : 2023-08-22T11:53:40



# Tropomi SWIR pixel quality (beta nominal)

orbits : 18 in [5392, 5437]  
coverage : 2018-10-28 / 2018-10-31  
to good : 865  
good to bad : 309  
to worst : 40  
created : 2023-08-22T11:53:40

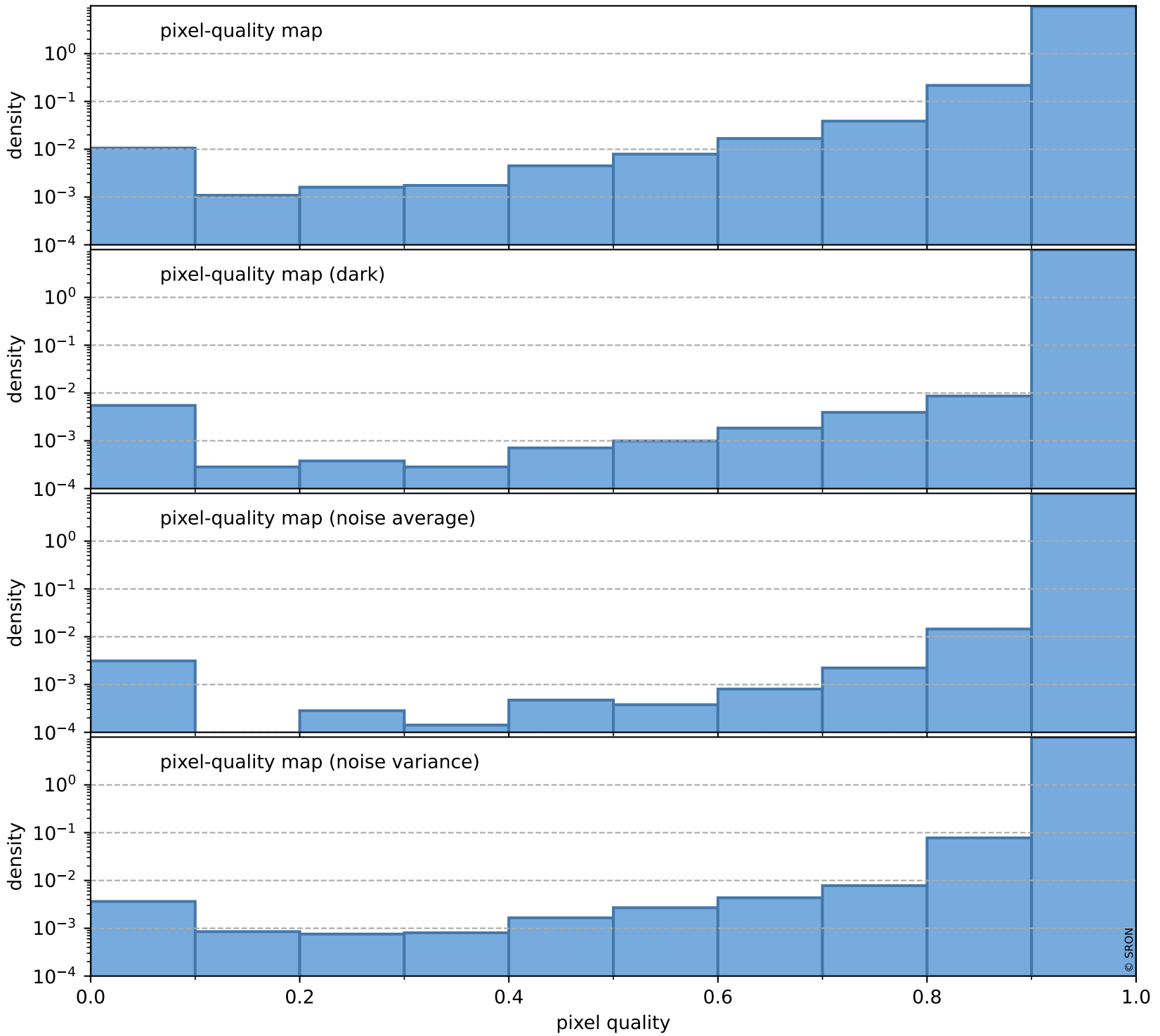
## total quality compared with SWIR pixel-quality CKD



# Tropomi SWIR pixel quality (beta nominal)

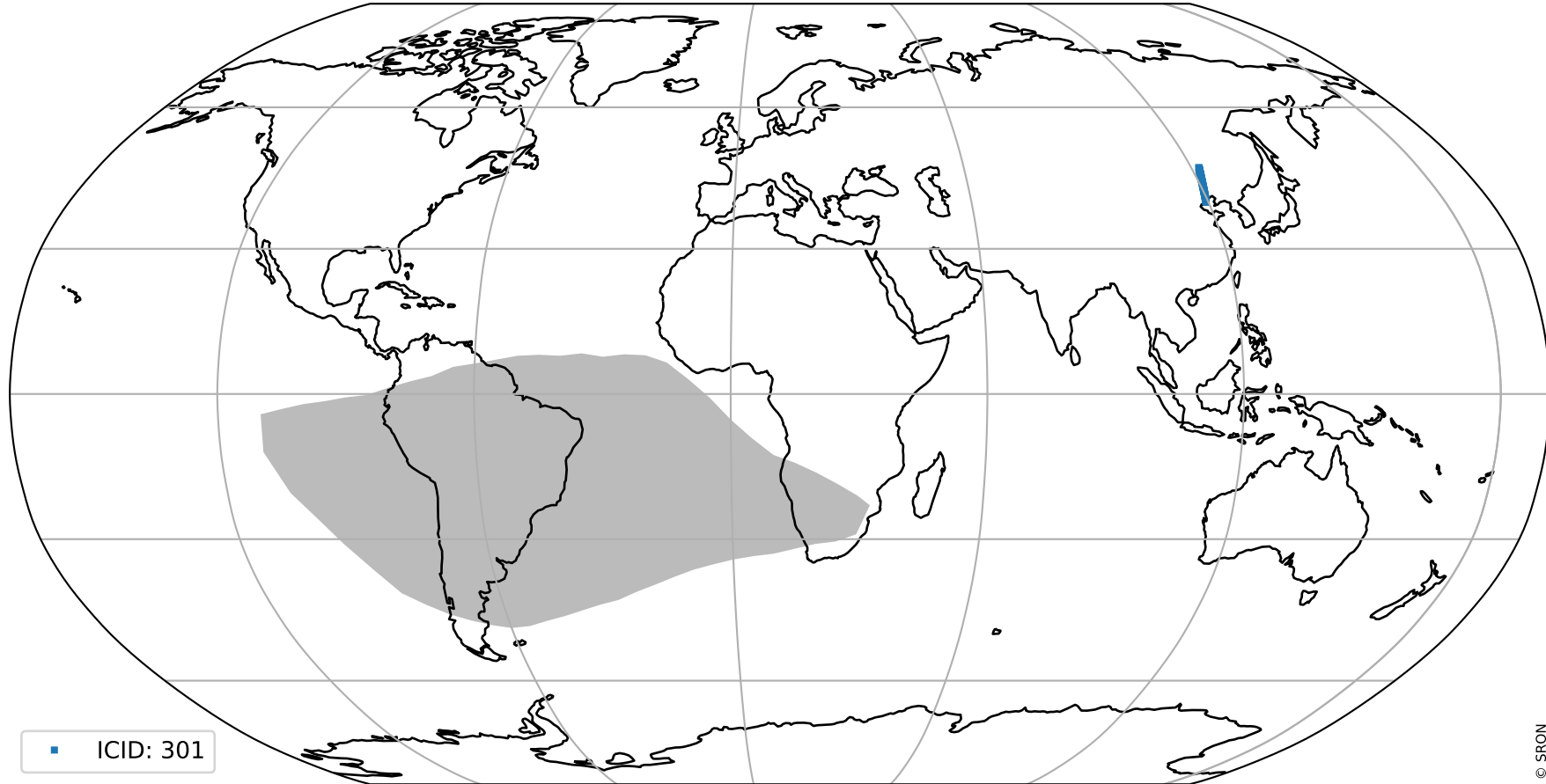
orbits : 18 in [5392, 5437]  
coverage : 2018-10-28 / 2018-10-31  
created : 2023-08-22T11:53:40

## Histograms of pixel-quality



# Tropomi SWIR pixel quality (beta nominal) ground-tracks of Sentinel-5P

orbits : 18 in [5392, 5437]  
coverage : 2018-10-28 / 2018-10-31  
created : 2023-08-22T11:53:41



# Tropomi SWIR pixel quality (beta nominal)

orbits : [1867, 5437]  
coverage : 2018-02-20 / 2018-10-31  
created : 2023-08-22T11:53:41

## trend of pixel quality & temperatures

