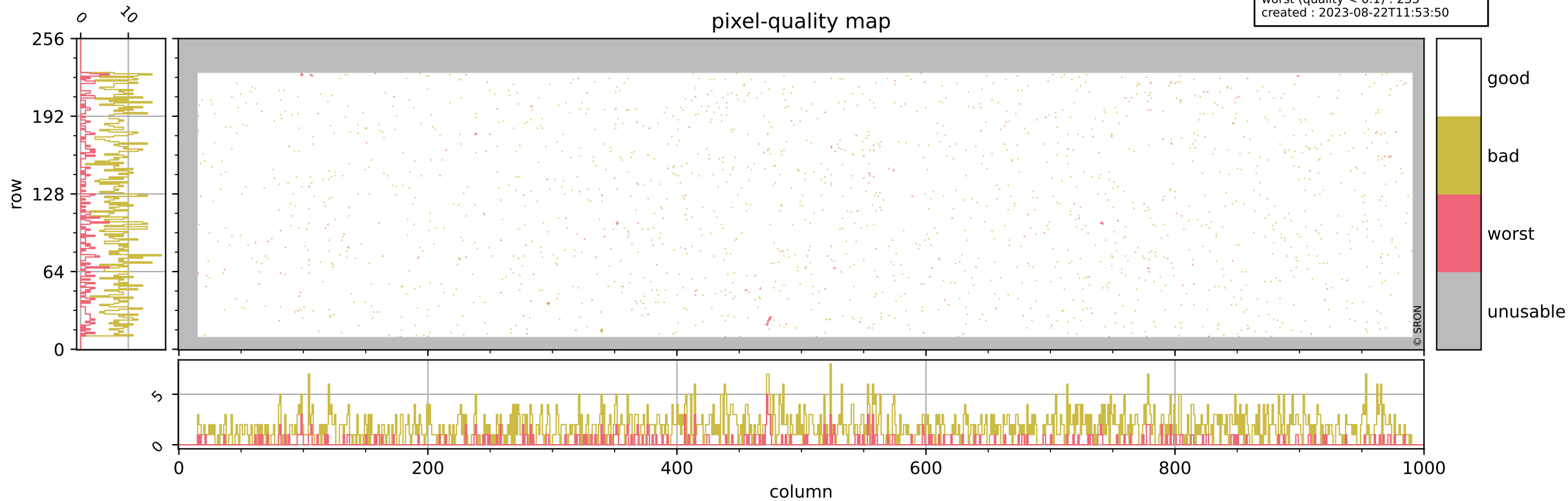


# Tropomi SWIR pixel quality (beta nominal)

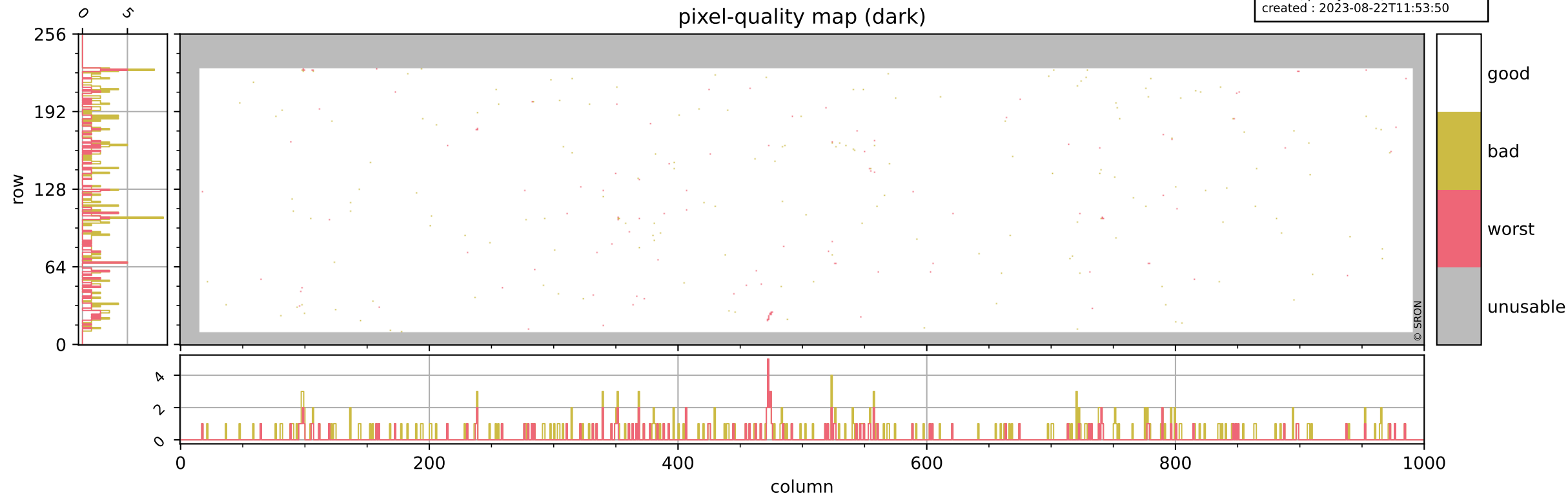
orbits : 20 in [5572, 5617]  
coverage : 2018-11-10 / 2018-11-13  
bad (quality < 0.8) : 1756  
worst (quality < 0.1) : 233  
created : 2023-08-22T11:53:50

## pixel-quality map



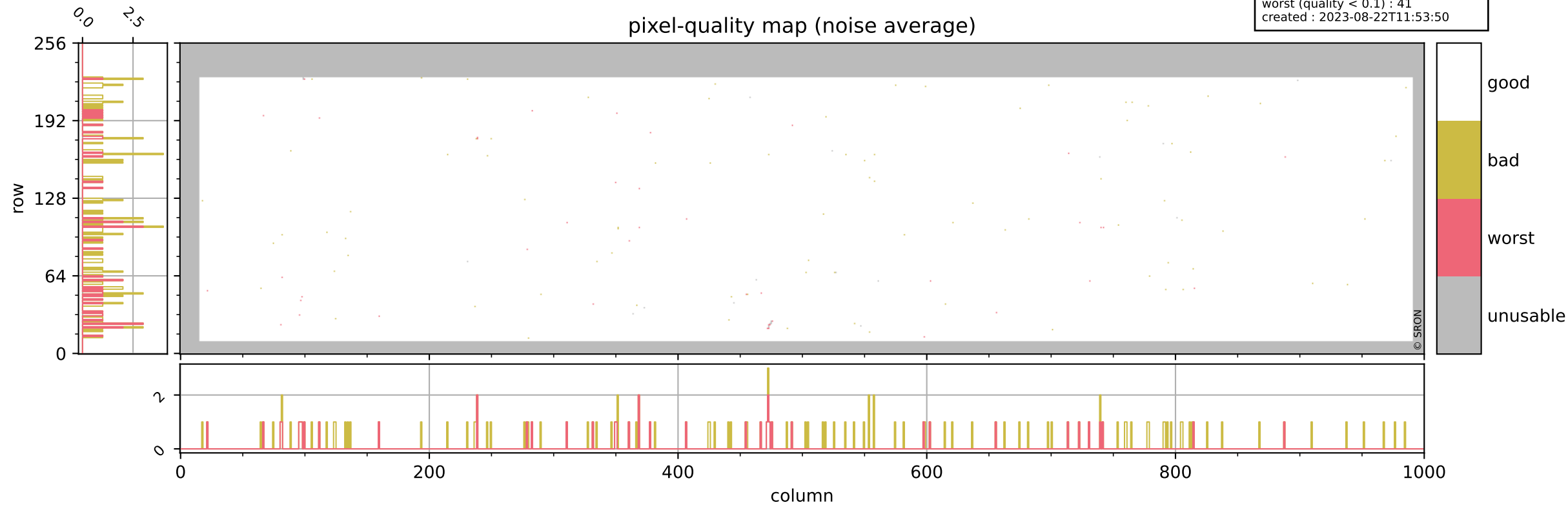
# Tropomi SWIR pixel quality (beta nominal)

orbits : 20 in [5572, 5617]  
coverage : 2018-11-10 / 2018-11-13  
bad (quality < 0.8) : 288  
worst (quality < 0.1) : 117  
created : 2023-08-22T11:53:50



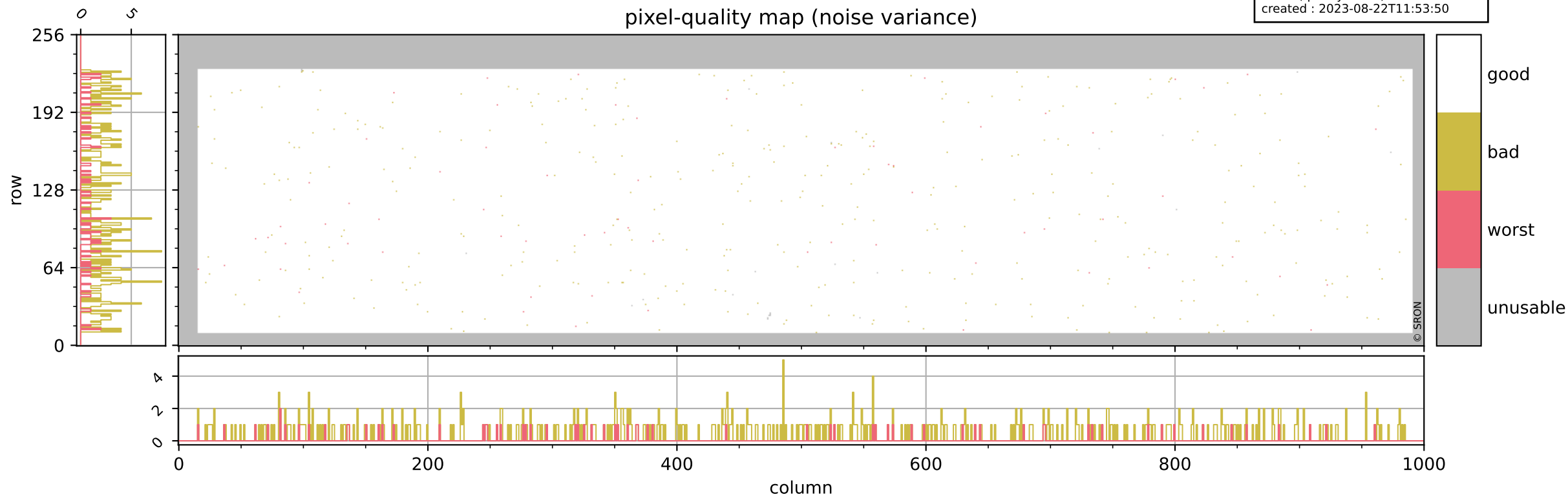
# Tropomi SWIR pixel quality (beta nominal)

orbits : 20 in [5572, 5617]  
coverage : 2018-11-10 / 2018-11-13  
bad (quality < 0.8) : 125  
worst (quality < 0.1) : 41  
created : 2023-08-22T11:53:50



# Tropomi SWIR pixel quality (beta nominal)

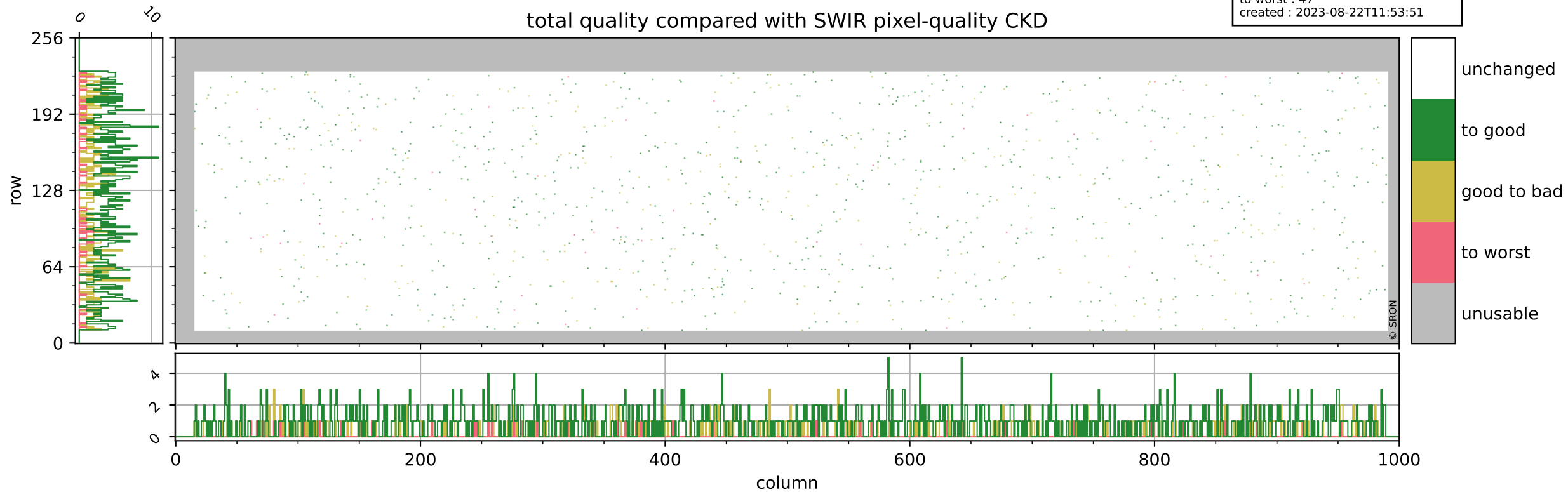
orbits : 20 in [5572, 5617]  
coverage : 2018-11-10 / 2018-11-13  
bad (quality < 0.8) : 439  
worst (quality < 0.1) : 67  
created : 2023-08-22T11:53:50



# Tropomi SWIR pixel quality (beta nominal)

orbits : 20 in [5572, 5617]  
coverage : 2018-11-10 / 2018-11-13  
to good : 857  
good to bad : 296  
to worst : 47  
created : 2023-08-22T11:53:51

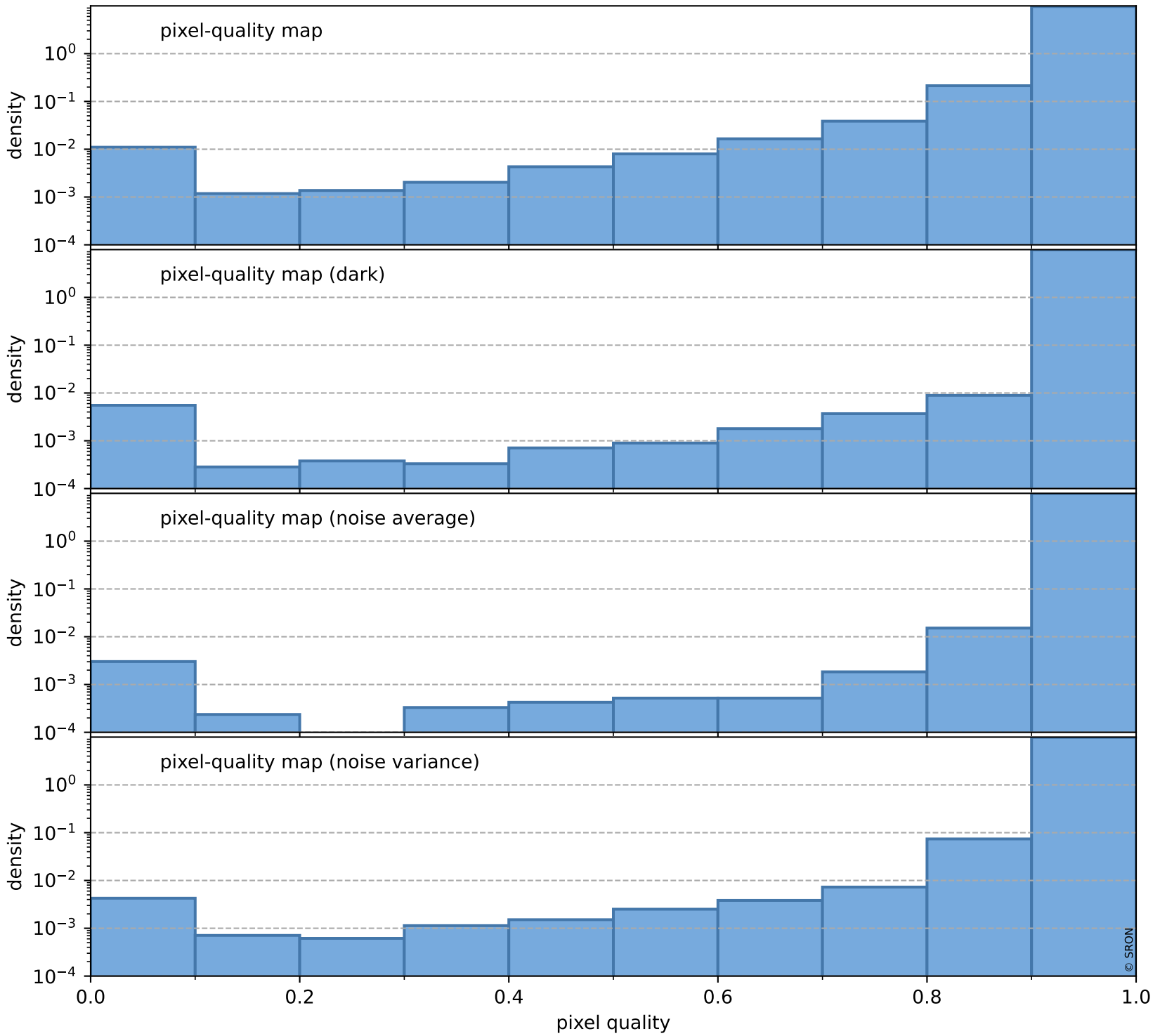
## total quality compared with SWIR pixel-quality CKD



# Tropomi SWIR pixel quality (beta nominal)

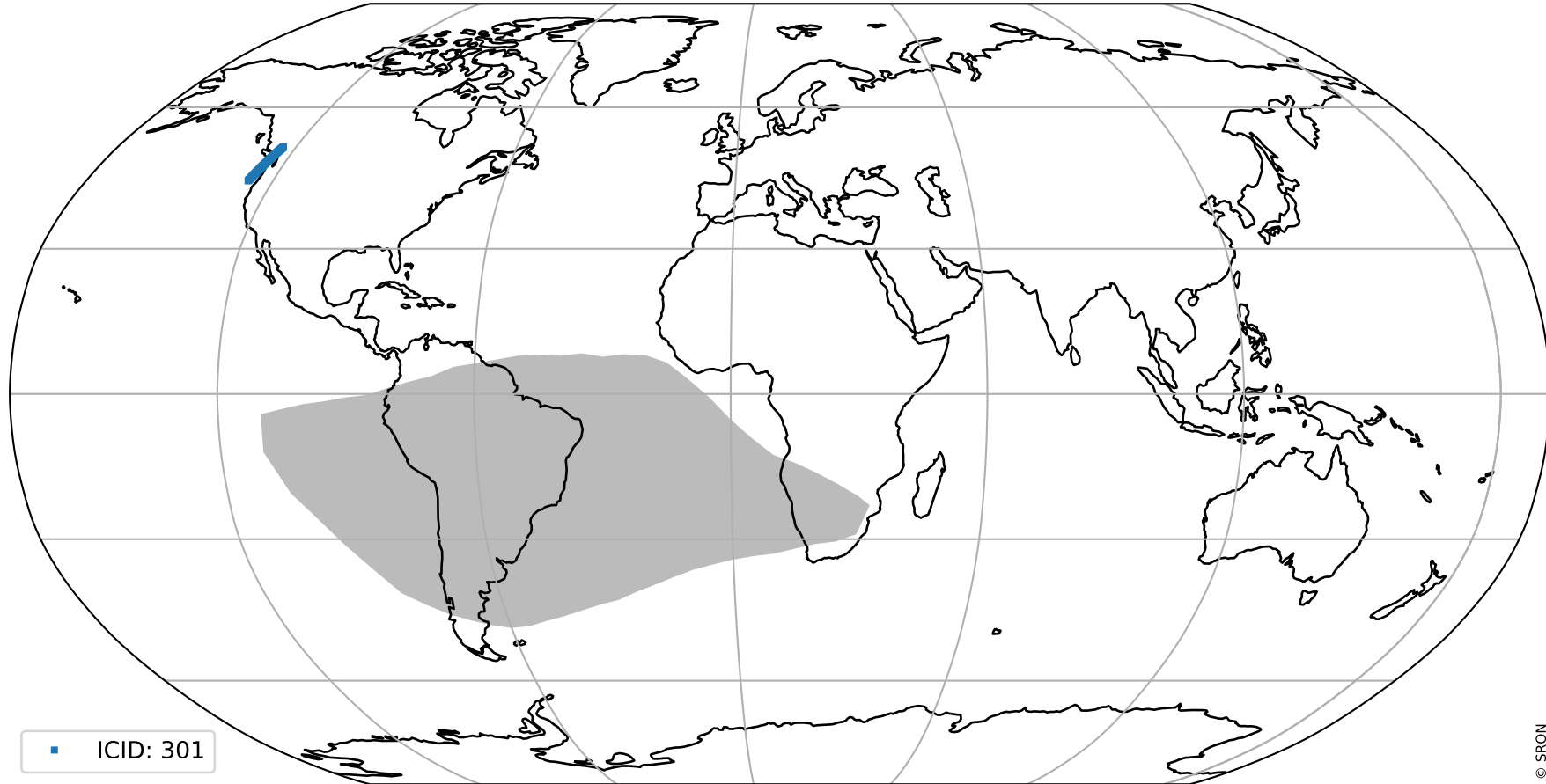
orbits : 20 in [5572, 5617]  
coverage : 2018-11-10 / 2018-11-13  
created : 2023-08-22T11:53:51

## Histograms of pixel-quality



# Tropomi SWIR pixel quality (beta nominal) ground-tracks of Sentinel-5P

orbits : 20 in [5572, 5617]  
coverage : 2018-11-10 / 2018-11-13  
created : 2023-08-22T11:53:51



■ ICID: 301

# Tropomi SWIR pixel quality (beta nominal)

orbits : [1867, 5617]  
coverage : 2018-02-20 / 2018-11-13  
created : 2023-08-22T11:53:52

## trend of pixel quality & temperatures

