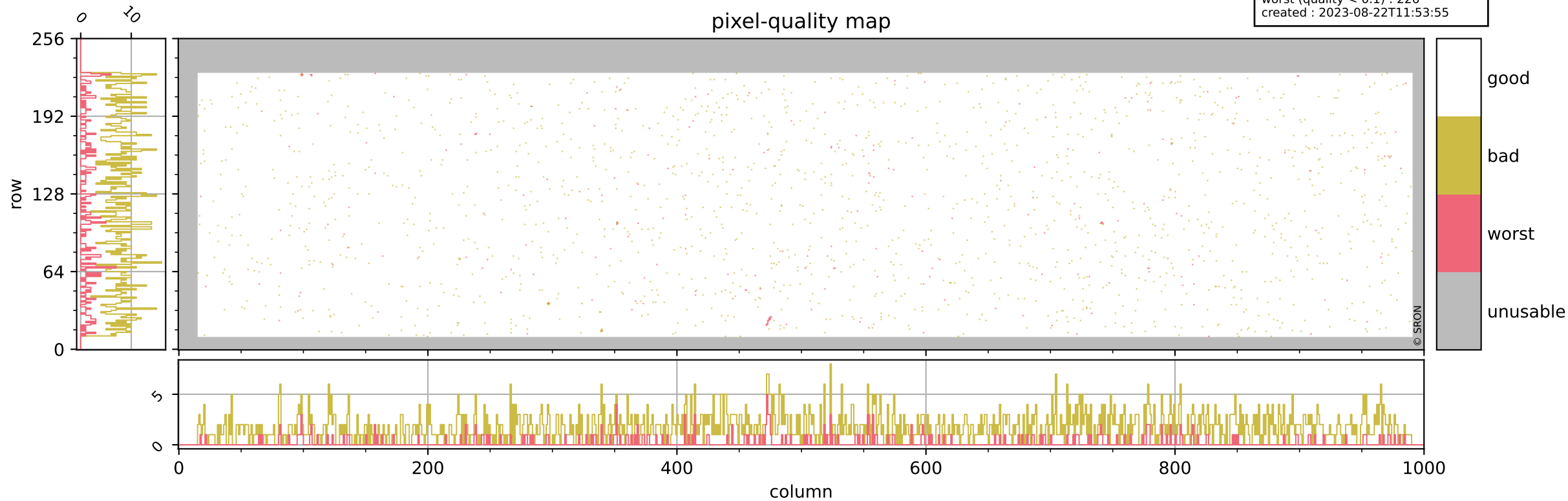


Tropomi SWIR pixel quality (beta nominal)

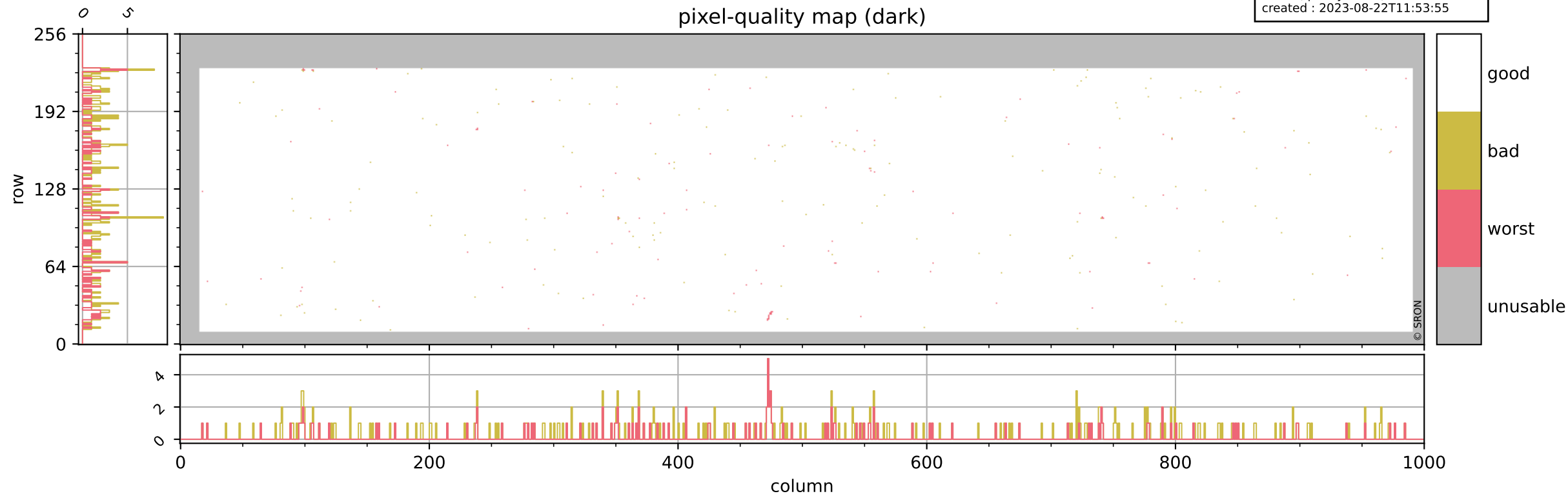
orbits : 20 in [5662, 5707]
coverage : 2018-11-16 / 2018-11-19
bad (quality < 0.8) : 1752
worst (quality < 0.1) : 226
created : 2023-08-22T11:53:55

pixel-quality map



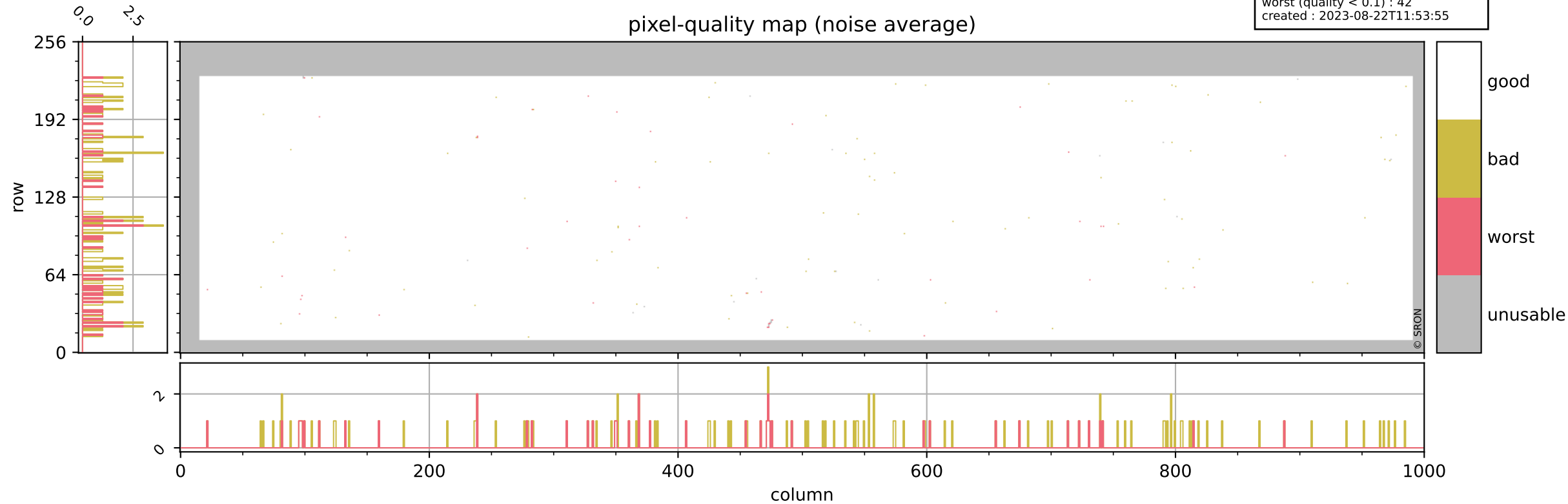
Tropomi SWIR pixel quality (beta nominal)

orbits : 20 in [5662, 5707]
coverage : 2018-11-16 / 2018-11-19
bad (quality < 0.8) : 288
worst (quality < 0.1) : 119
created : 2023-08-22T11:53:55



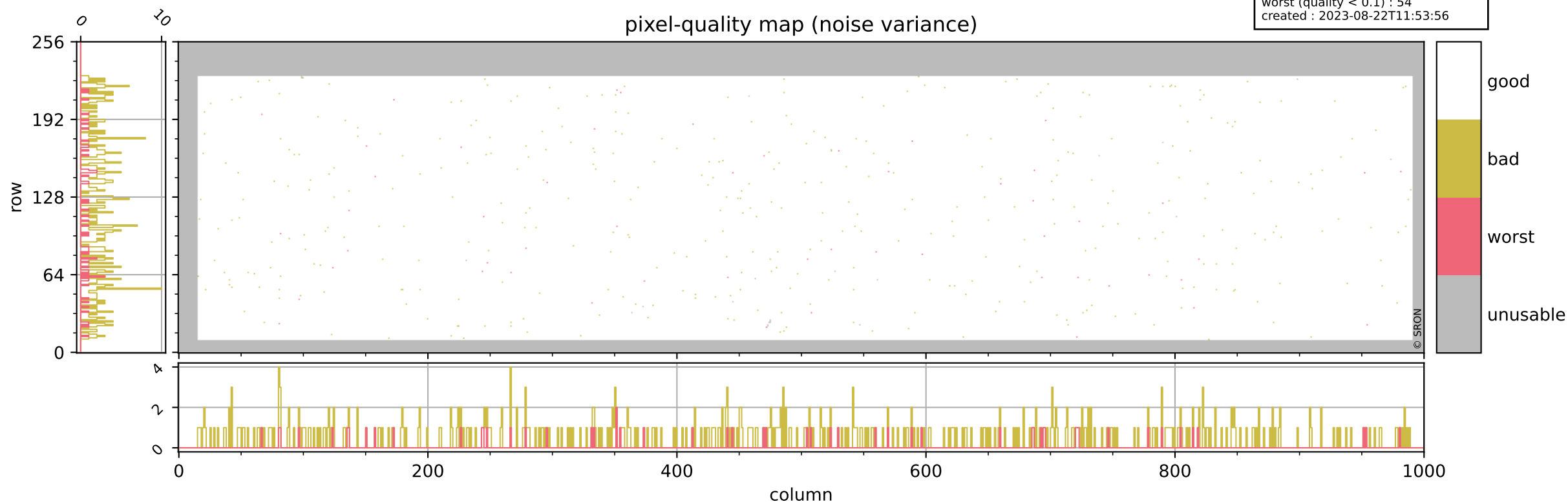
Tropomi SWIR pixel quality (beta nominal)

orbits : 20 in [5662, 5707]
coverage : 2018-11-16 / 2018-11-19
bad (quality < 0.8) : 125
worst (quality < 0.1) : 42
created : 2023-08-22T11:53:55



Tropomi SWIR pixel quality (beta nominal)

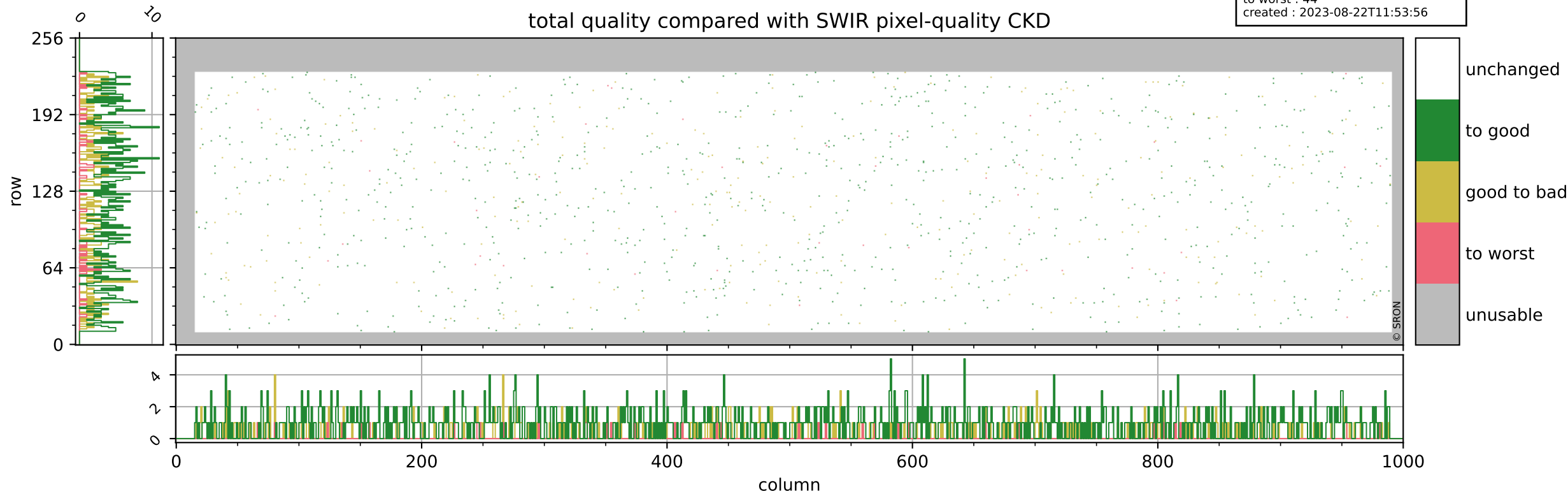
orbits : 20 in [5662, 5707]
coverage : 2018-11-16 / 2018-11-19
bad (quality < 0.8) : 438
worst (quality < 0.1) : 54
created : 2023-08-22T11:53:56



Tropomi SWIR pixel quality (beta nominal)

orbits : 20 in [5662, 5707]
coverage : 2018-11-16 / 2018-11-19
to good : 870
good to bad : 303
to worst : 44
created : 2023-08-22T11:53:56

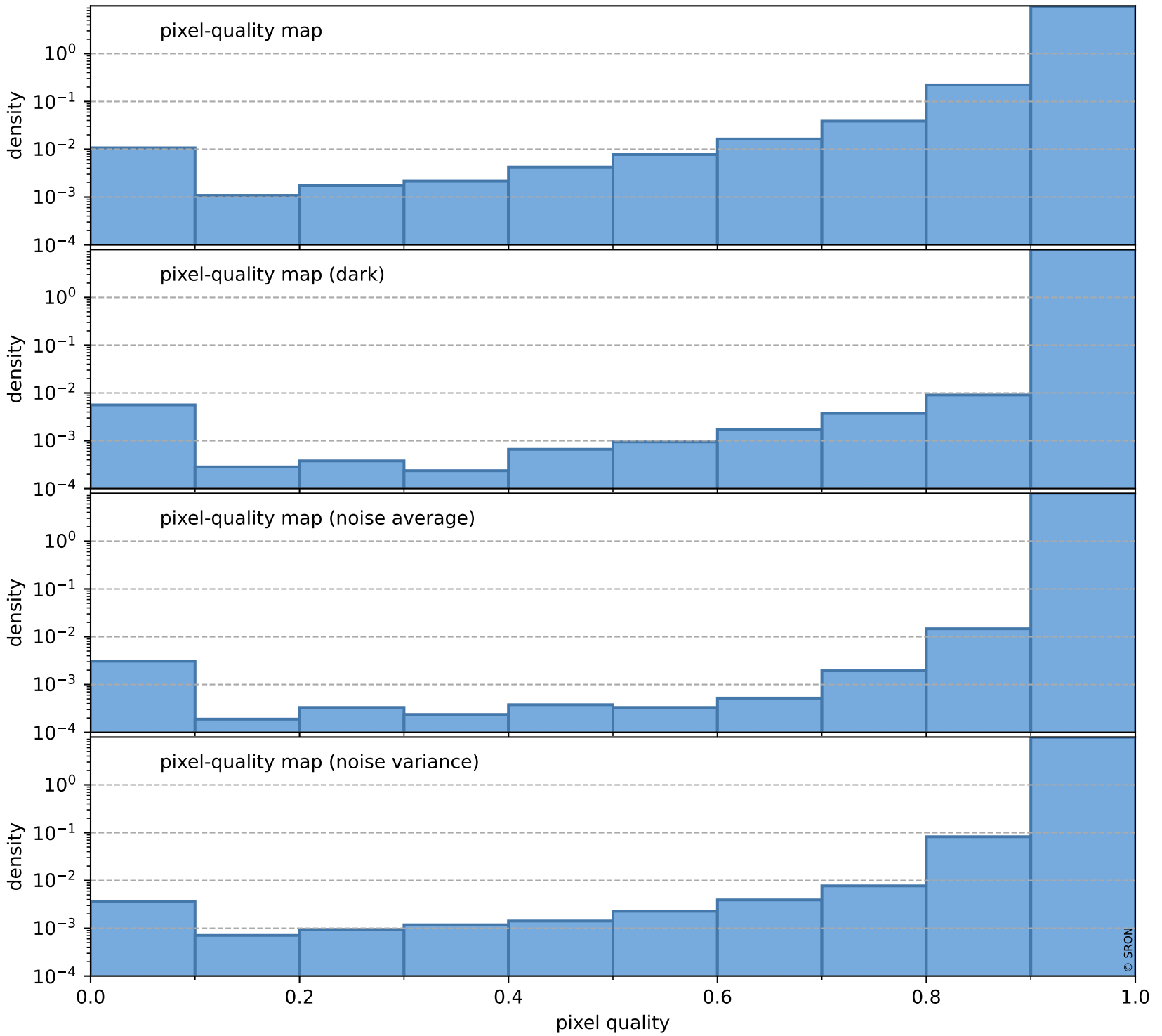
total quality compared with SWIR pixel-quality CKD



Tropomi SWIR pixel quality (beta nominal)

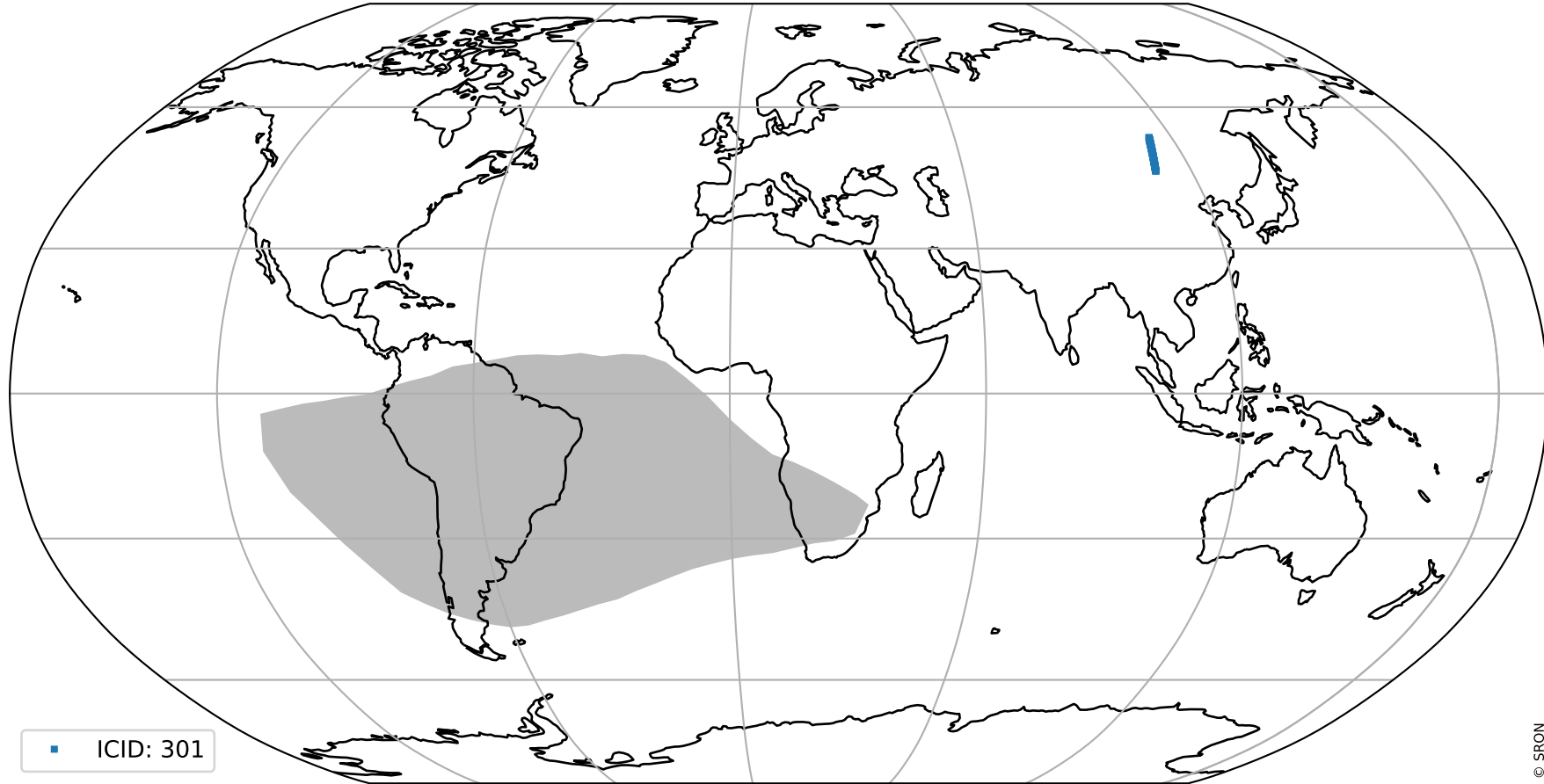
orbits : 20 in [5662, 5707]
coverage : 2018-11-16 / 2018-11-19
created : 2023-08-22T11:53:56

Histograms of pixel-quality



Tropomi SWIR pixel quality (beta nominal) ground-tracks of Sentinel-5P

orbits : 20 in [5662, 5707]
coverage : 2018-11-16 / 2018-11-19
created : 2023-08-22T11:53:57



Tropomi SWIR pixel quality (beta nominal)

orbits : [1867, 5707]
coverage : 2018-02-20 / 2018-11-19
created : 2023-08-22T11:53:57

trend of pixel quality & temperatures

