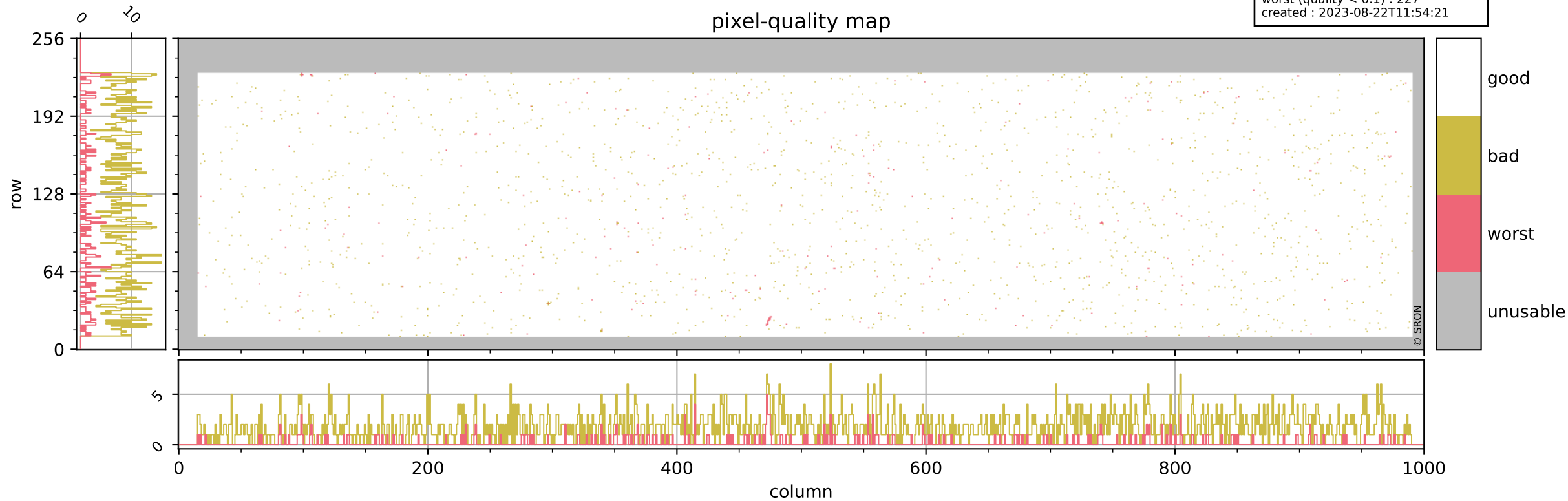


Tropomi SWIR pixel quality (beta nominal)

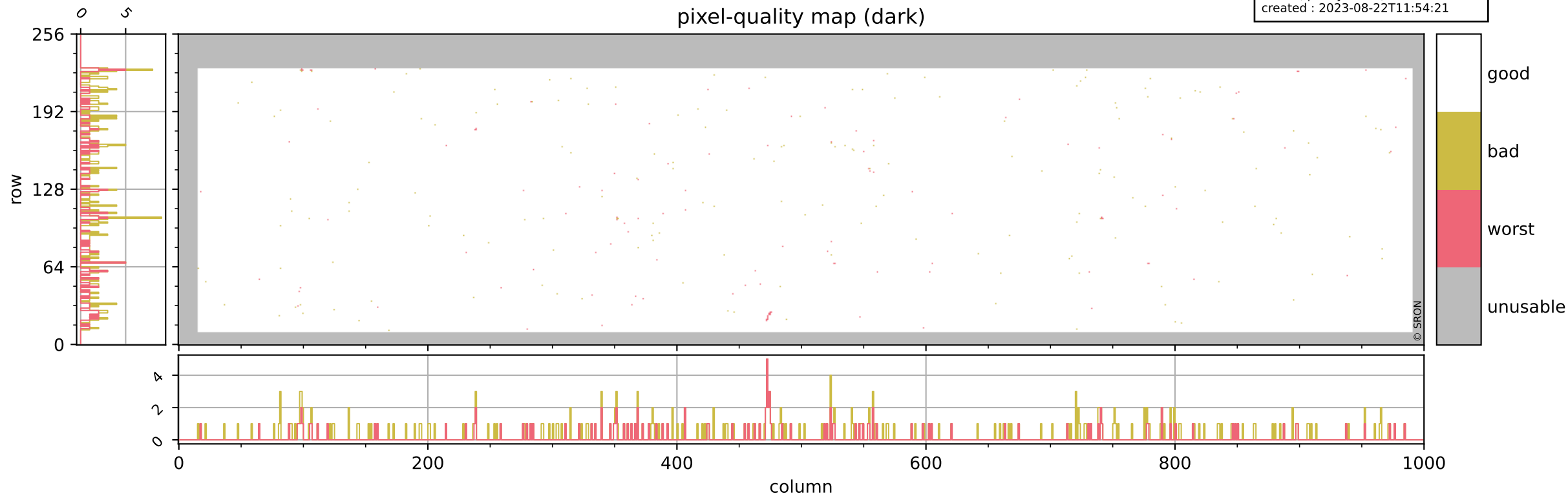
orbits : 20 in [6112, 6157]
coverage : 2018-12-18 / 2018-12-21
bad (quality < 0.8) : 1811
worst (quality < 0.1) : 227
created : 2023-08-22T11:54:21

pixel-quality map



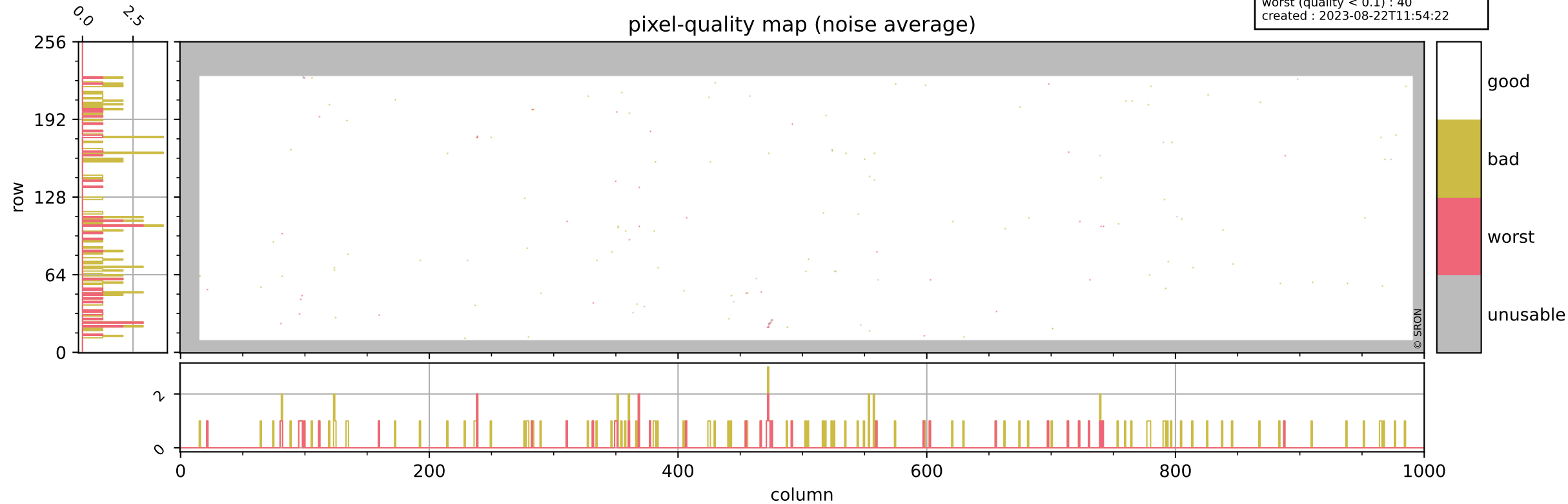
Tropomi SWIR pixel quality (beta nominal)

orbits : 20 in [6112, 6157]
coverage : 2018-12-18 / 2018-12-21
bad (quality < 0.8) : 292
worst (quality < 0.1) : 117
created : 2023-08-22T11:54:21



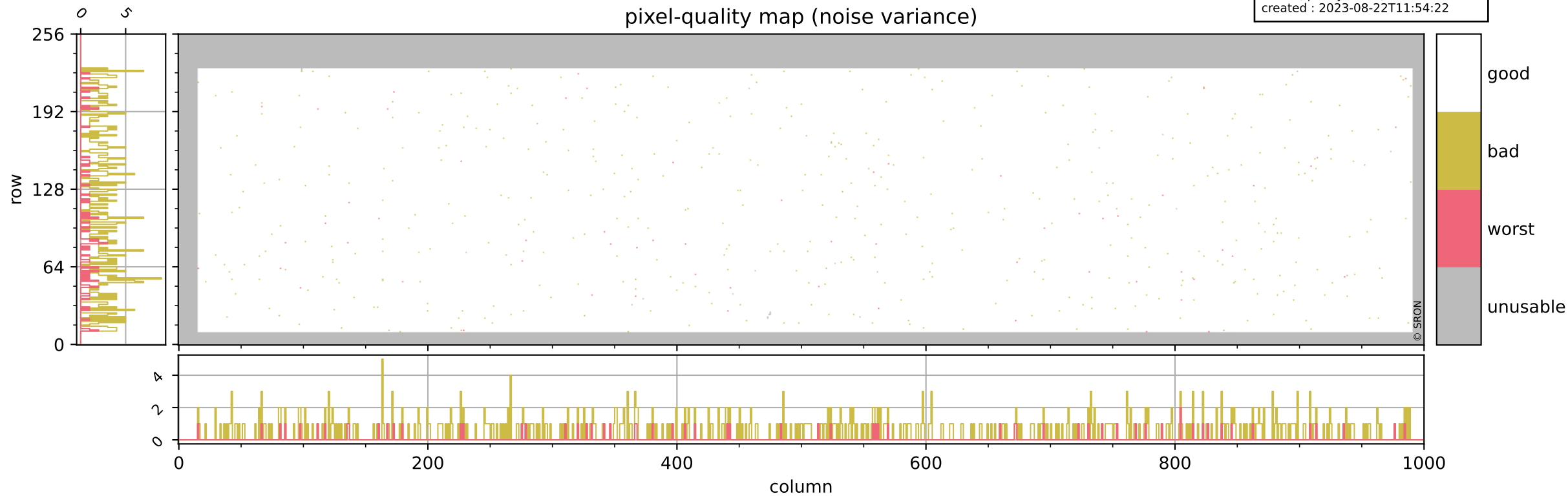
Tropomi SWIR pixel quality (beta nominal)

orbits : 20 in [6112, 6157]
coverage : 2018-12-18 / 2018-12-21
bad (quality < 0.8) : 132
worst (quality < 0.1) : 40
created : 2023-08-22T11:54:22



Tropomi SWIR pixel quality (beta nominal)

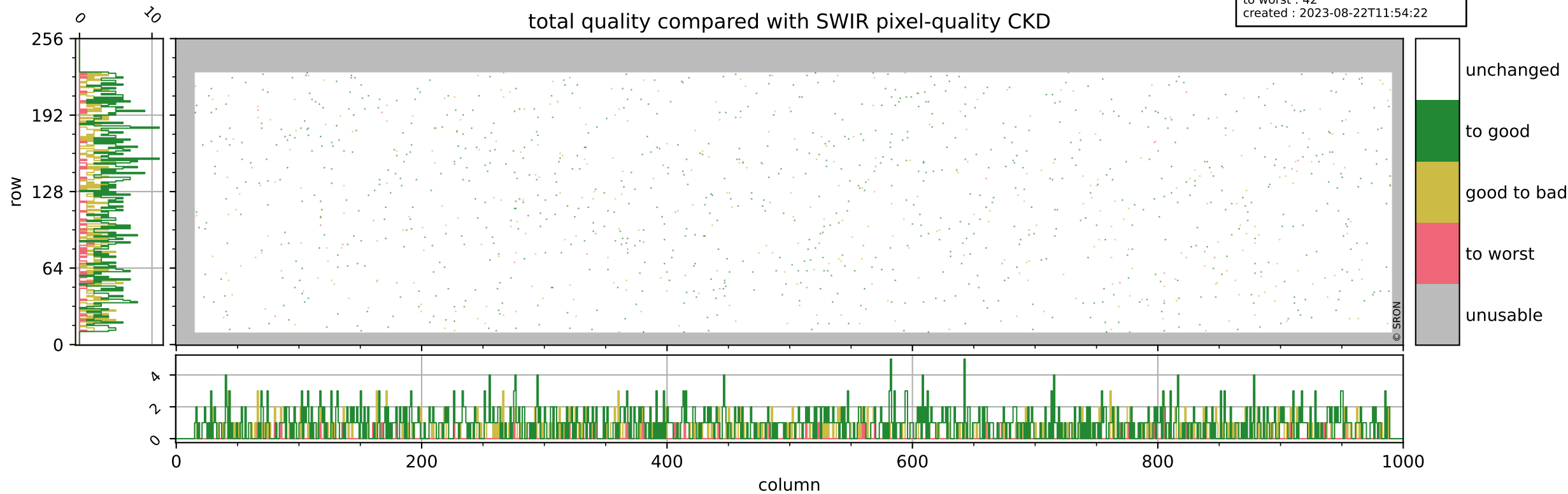
orbits : 20 in [6112, 6157]
coverage : 2018-12-18 / 2018-12-21
bad (quality < 0.8) : 512
worst (quality < 0.1) : 62
created : 2023-08-22T11:54:22



Tropomi SWIR pixel quality (beta nominal)

orbits : 20 in [6112, 6157]
coverage : 2018-12-18 / 2018-12-21
to good : 868
good to bad : 365
to worst : 42
created : 2023-08-22T11:54:22

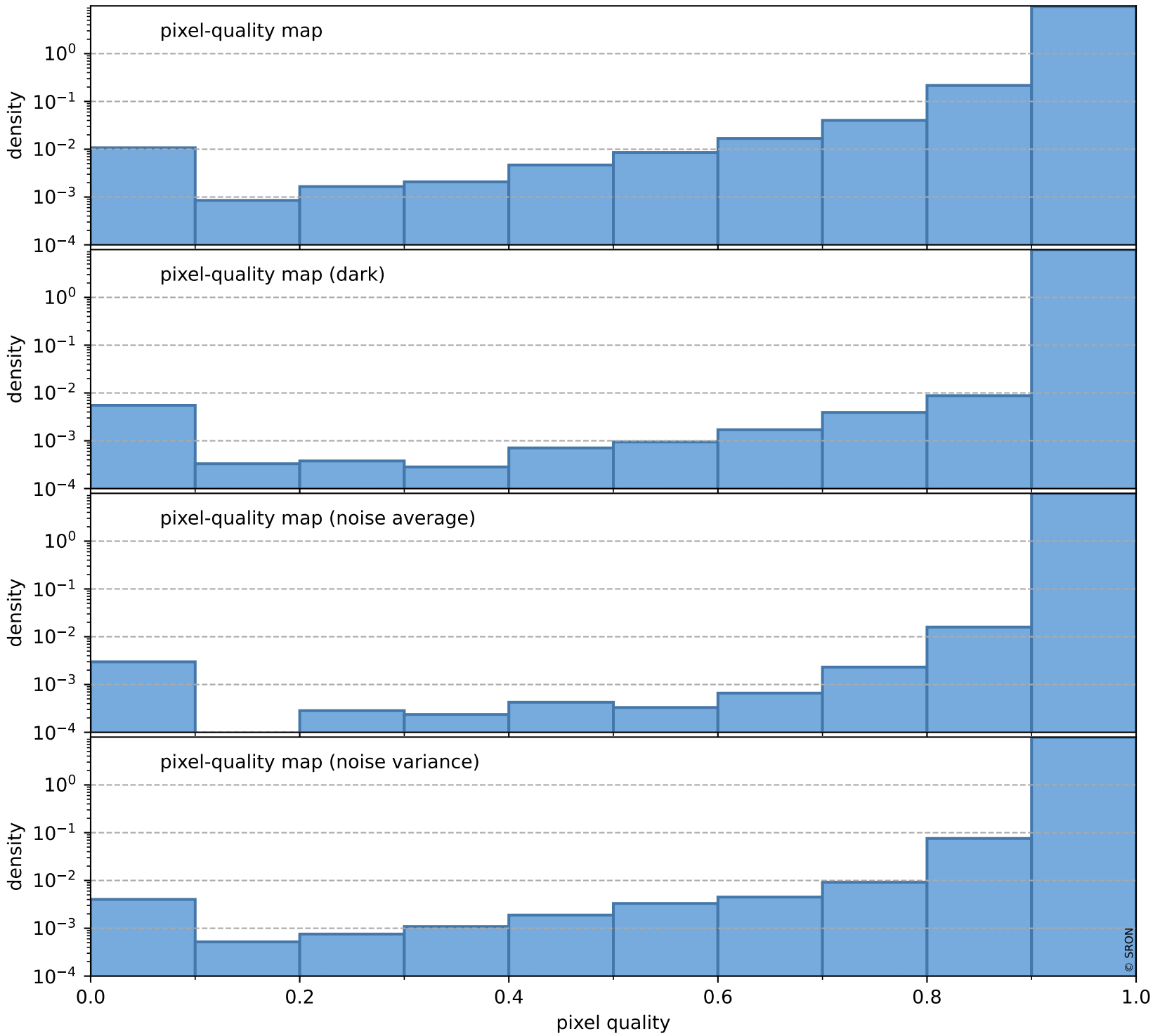
total quality compared with SWIR pixel-quality CKD



Tropomi SWIR pixel quality (beta nominal)

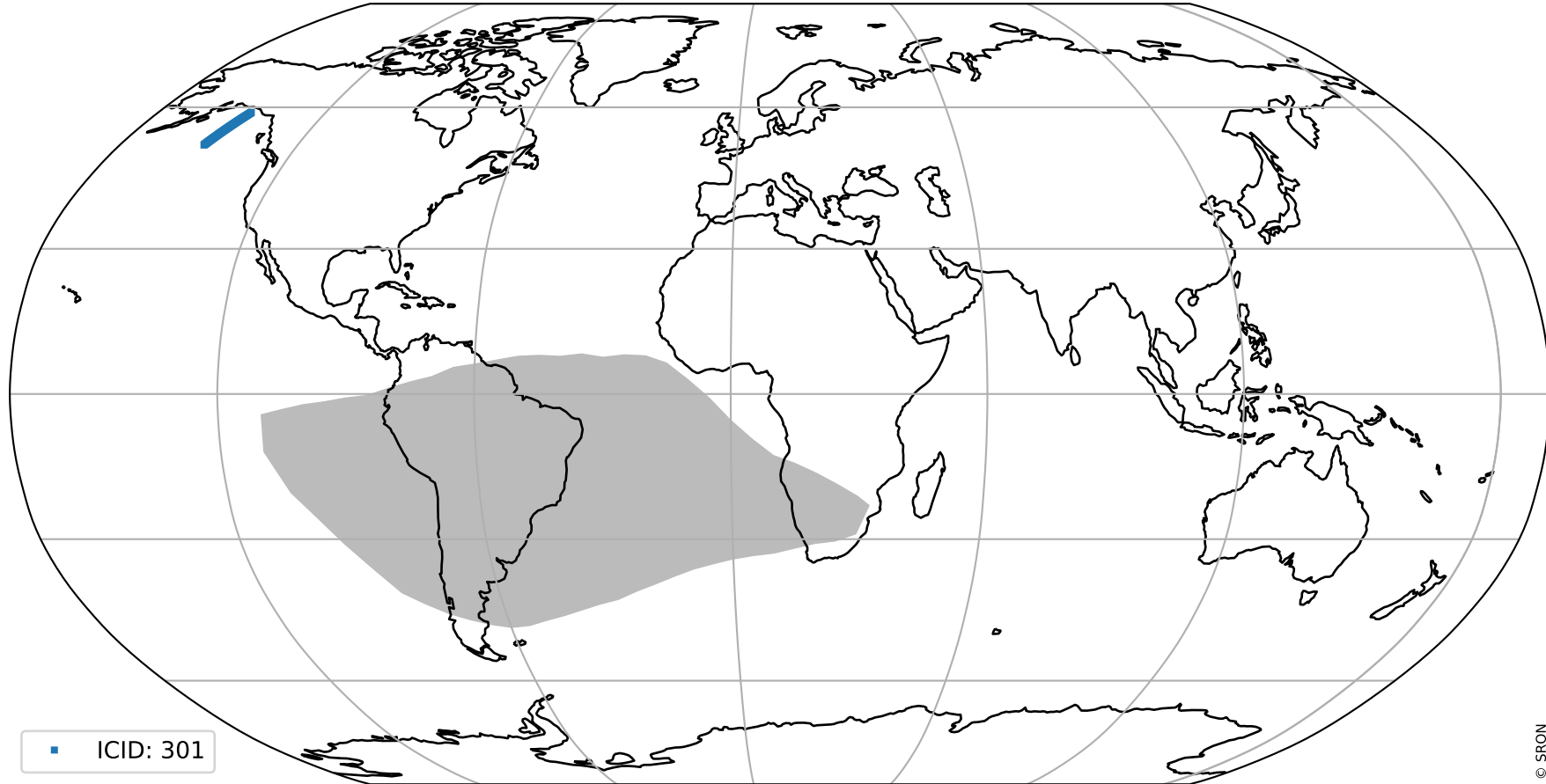
orbits : 20 in [6112, 6157]
coverage : 2018-12-18 / 2018-12-21
created : 2023-08-22T11:54:22

Histograms of pixel-quality



Tropomi SWIR pixel quality (beta nominal) ground-tracks of Sentinel-5P

orbits : 20 in [6112, 6157]
coverage : 2018-12-18 / 2018-12-21
created : 2023-08-22T11:54:23



Tropomi SWIR pixel quality (beta nominal)

orbits : [1867, 6157]
coverage : 2018-02-20 / 2018-12-21
created : 2023-08-22T11:54:23

trend of pixel quality & temperatures

