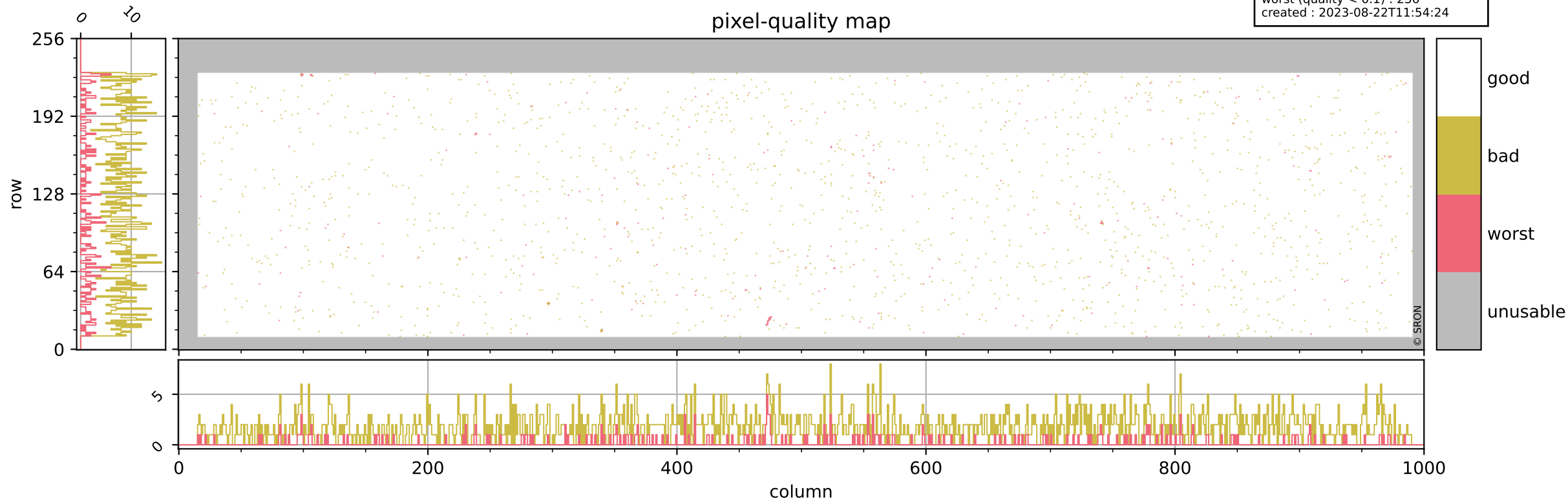


# Tropomi SWIR pixel quality (beta nominal)

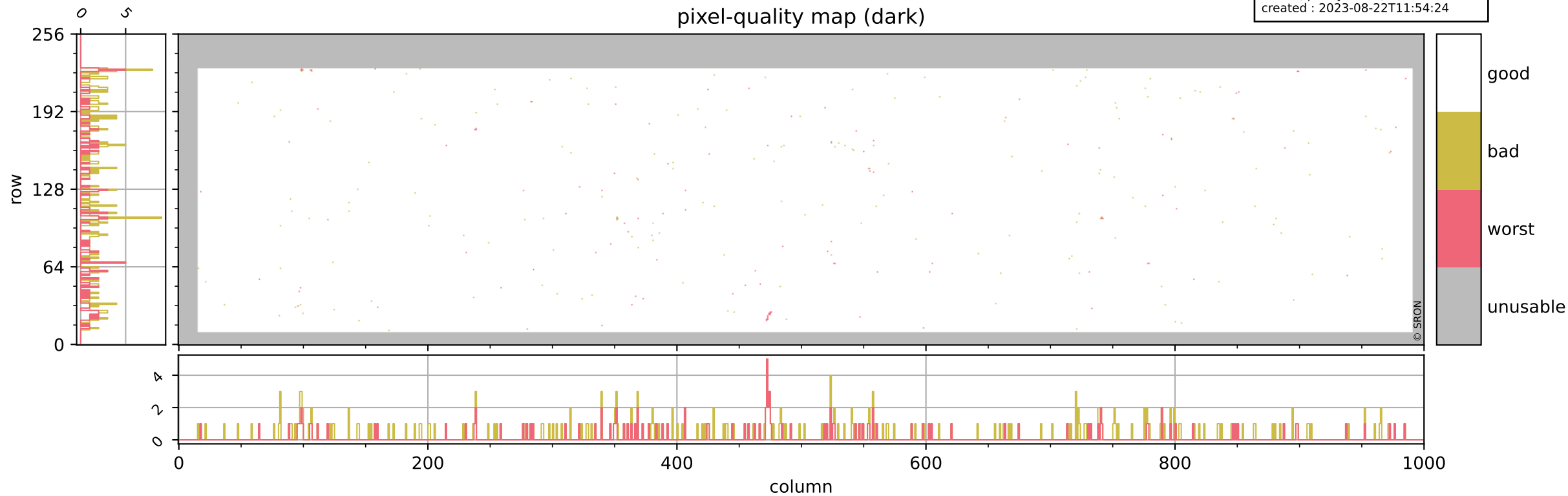
orbits : 19 in [6157, 6202]  
coverage : 2018-12-21 / 2018-12-24  
bad (quality < 0.8) : 1799  
worst (quality < 0.1) : 236  
created : 2023-08-22T11:54:24

## pixel-quality map



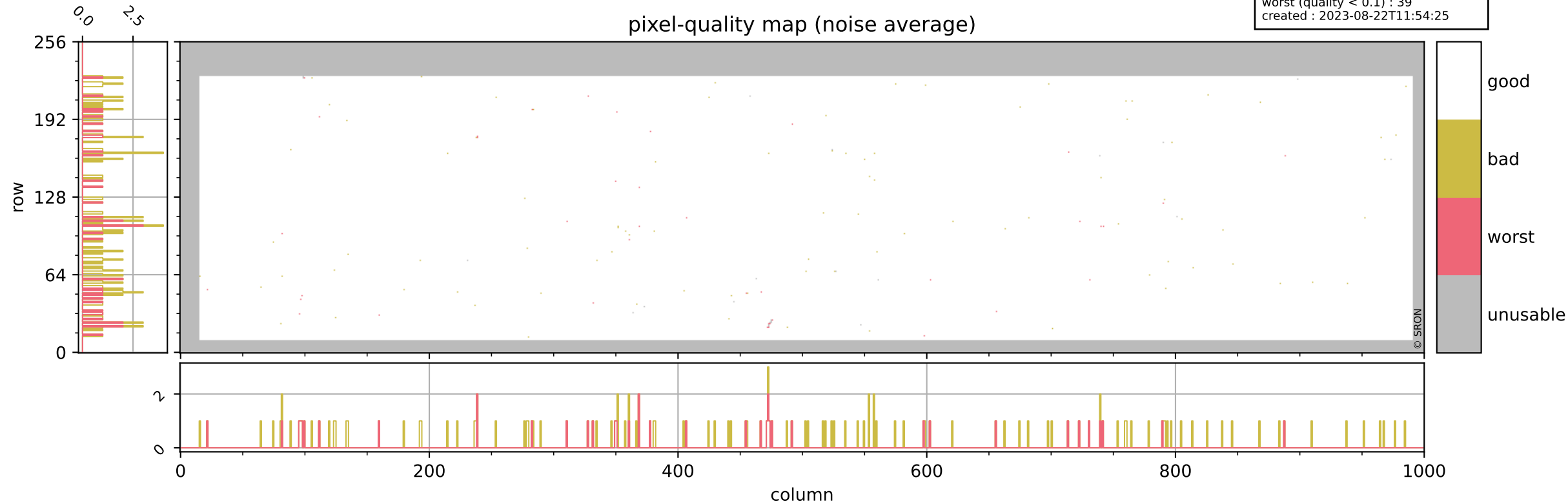
# Tropomi SWIR pixel quality (beta nominal)

orbits : 19 in [6157, 6202]  
coverage : 2018-12-21 / 2018-12-24  
bad (quality < 0.8) : 291  
worst (quality < 0.1) : 116  
created : 2023-08-22T11:54:24



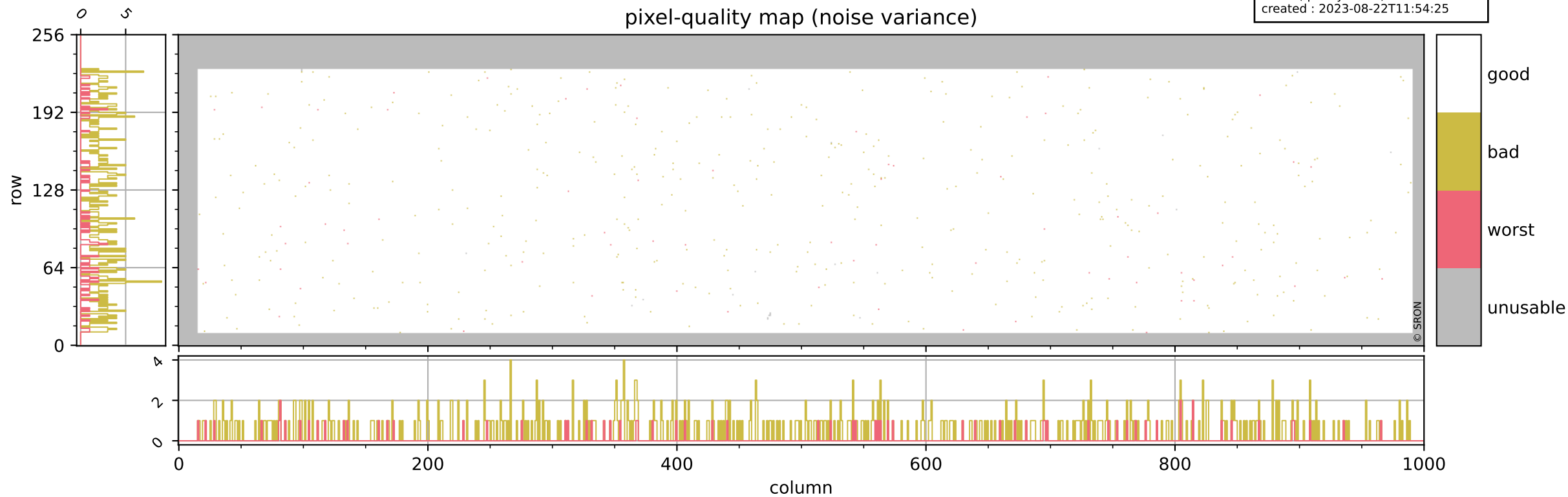
# Tropomi SWIR pixel quality (beta nominal)

orbits : 19 in [6157, 6202]  
coverage : 2018-12-21 / 2018-12-24  
bad (quality < 0.8) : 128  
worst (quality < 0.1) : 39  
created : 2023-08-22T11:54:25



# Tropomi SWIR pixel quality (beta nominal)

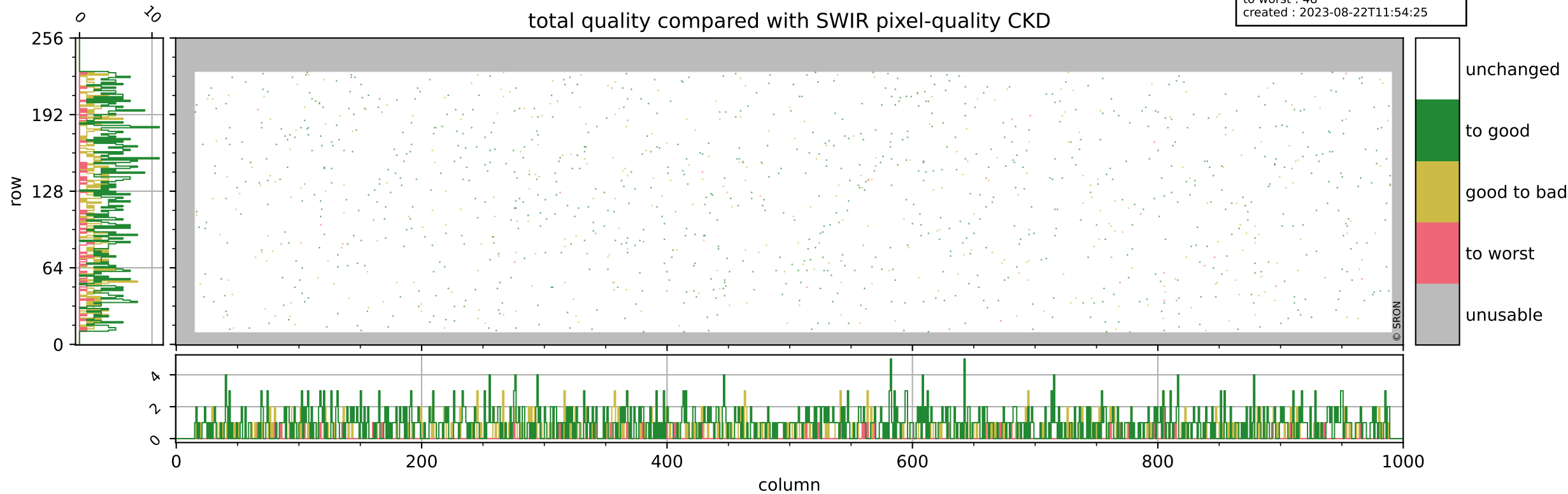
orbits : 19 in [6157, 6202]  
coverage : 2018-12-21 / 2018-12-24  
bad (quality < 0.8) : 496  
worst (quality < 0.1) : 70  
created : 2023-08-22T11:54:25



# Tropomi SWIR pixel quality (beta nominal)

orbits : 19 in [6157, 6202]  
coverage : 2018-12-21 / 2018-12-24  
to good : 870  
good to bad : 348  
to worst : 48  
created : 2023-08-22T11:54:25

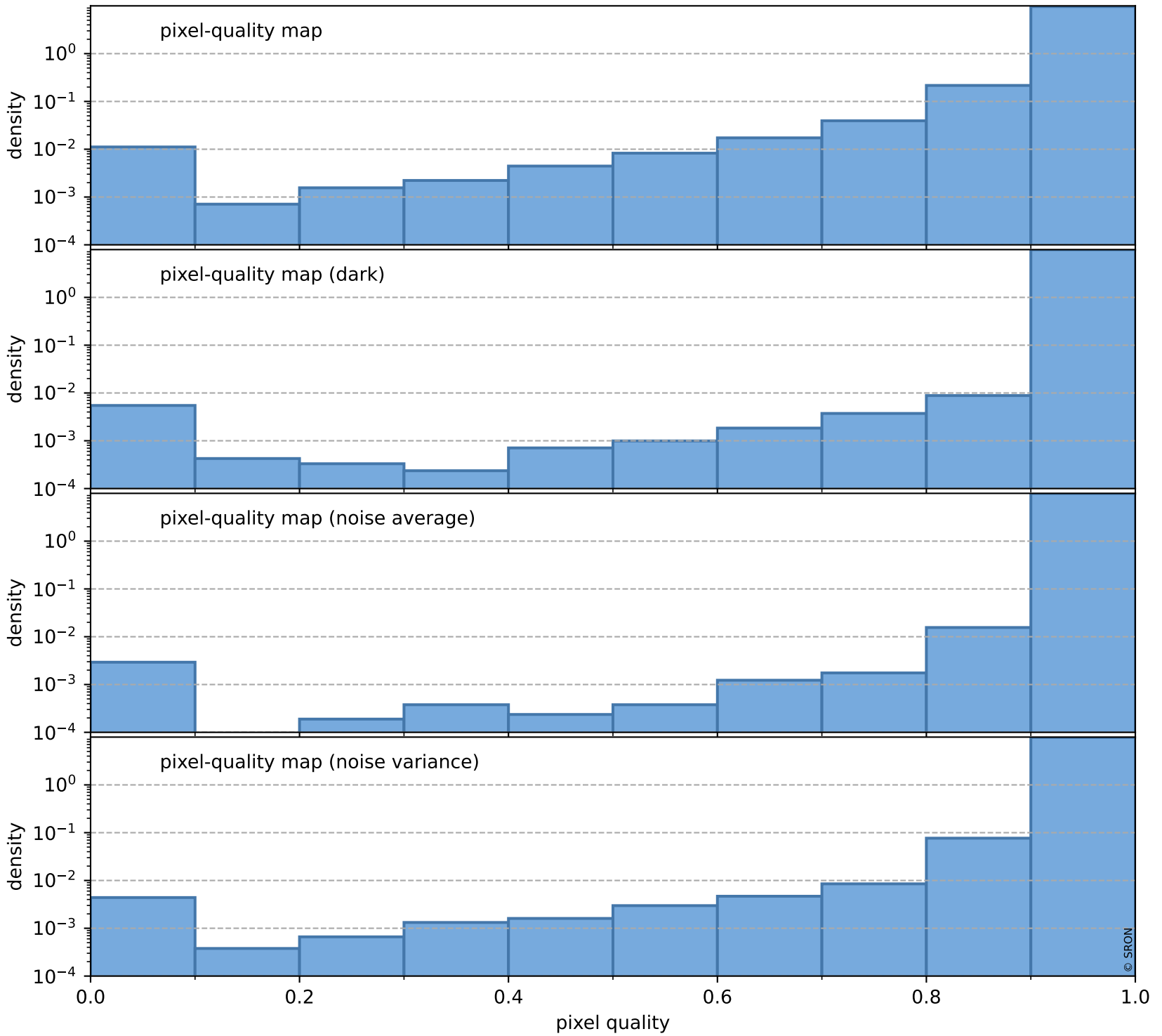
## total quality compared with SWIR pixel-quality CKD



# Tropomi SWIR pixel quality (beta nominal)

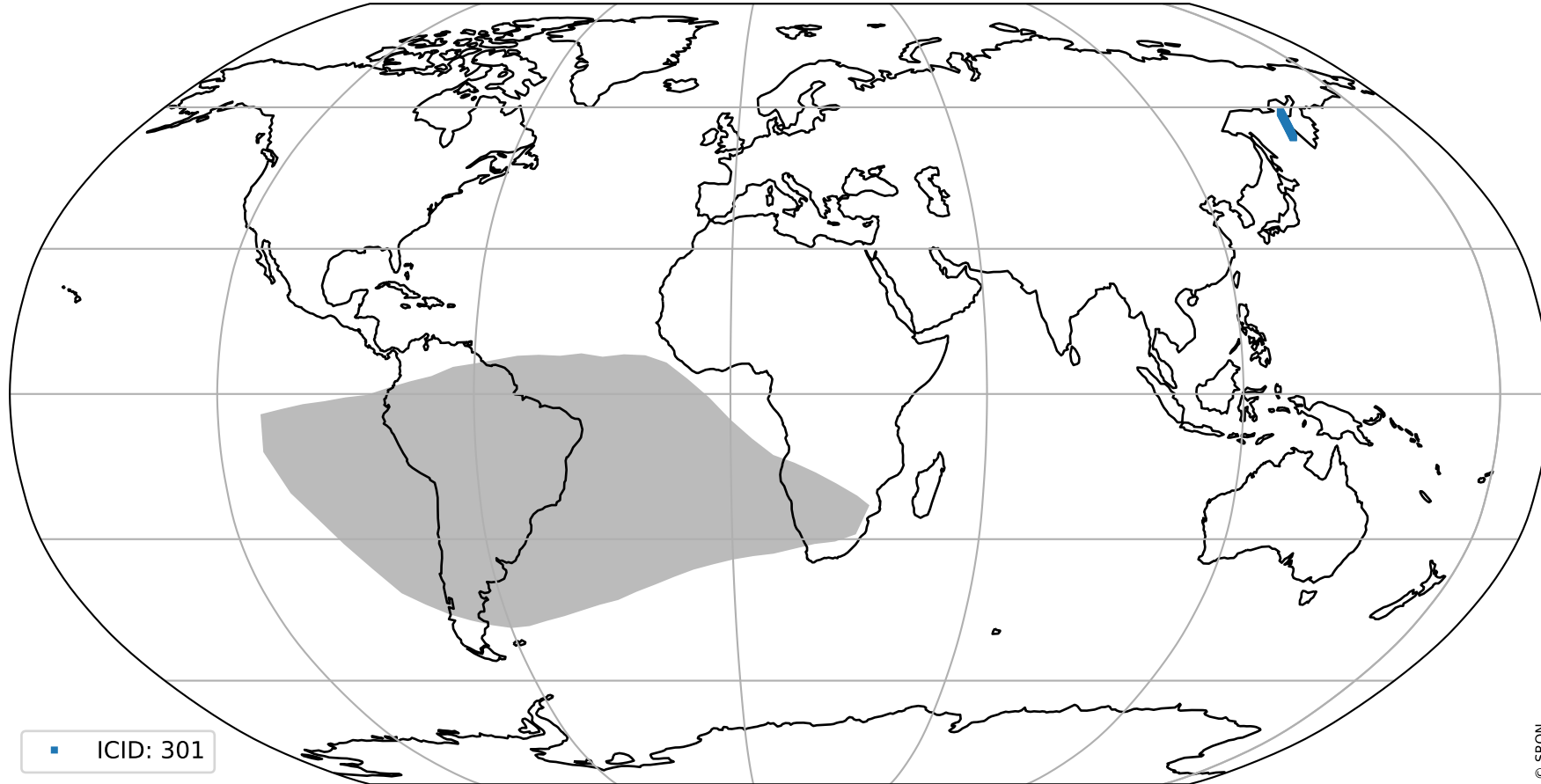
orbits : 19 in [6157, 6202]  
coverage : 2018-12-21 / 2018-12-24  
created : 2023-08-22T11:54:25

## Histograms of pixel-quality



# Tropomi SWIR pixel quality (beta nominal) ground-tracks of Sentinel-5P

orbits : 19 in [6157, 6202]  
coverage : 2018-12-21 / 2018-12-24  
created : 2023-08-22T11:54:26



# Tropomi SWIR pixel quality (beta nominal)

orbits : [1867, 6202]  
coverage : 2018-02-20 / 2018-12-24  
created : 2023-08-22T11:54:26

## trend of pixel quality & temperatures

