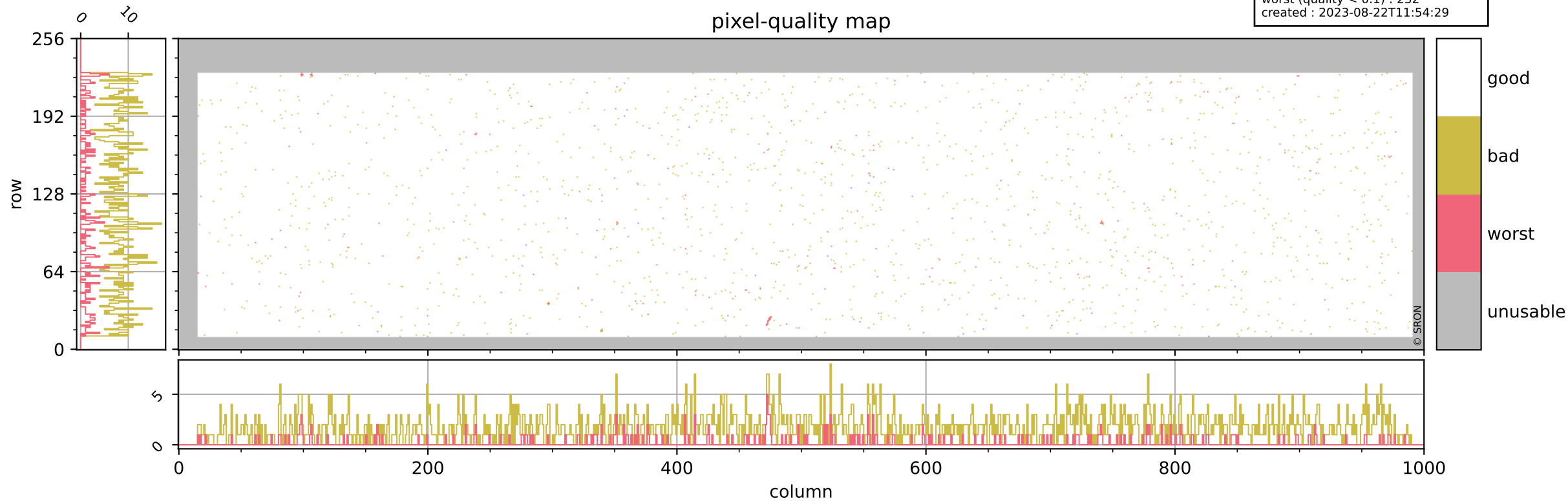


# Tropomi SWIR pixel quality (beta nominal)

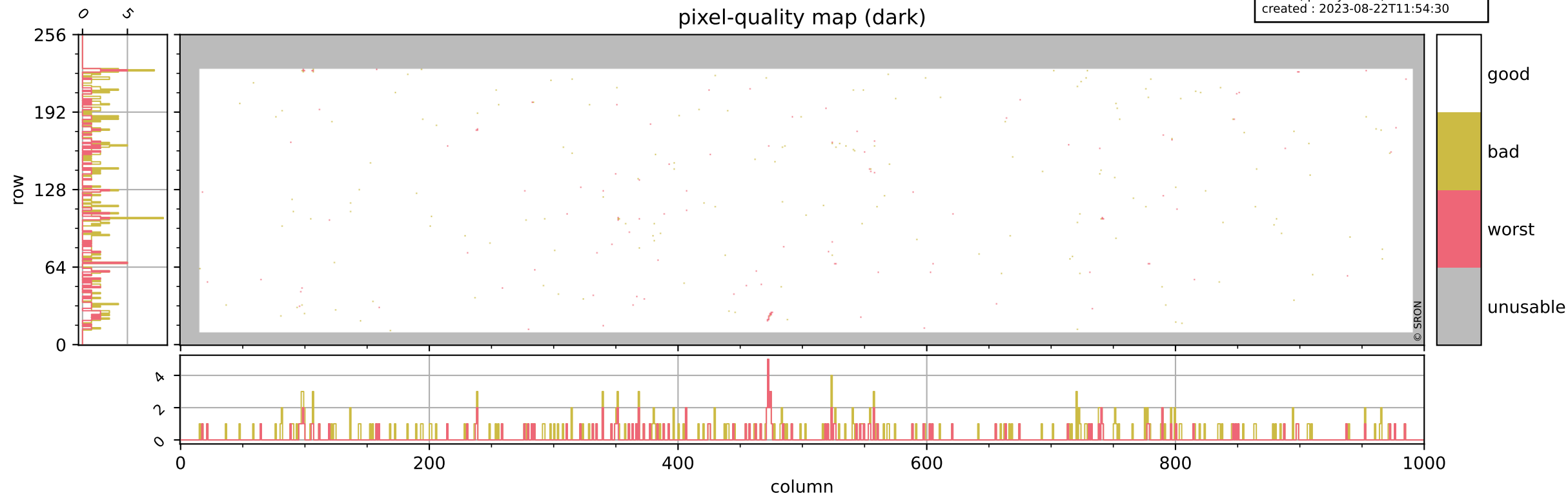
orbits : 18 in [6247, 6292]  
coverage : 2018-12-27 / 2018-12-30  
bad (quality < 0.8) : 1794  
worst (quality < 0.1) : 232  
created : 2023-08-22T11:54:29

## pixel-quality map



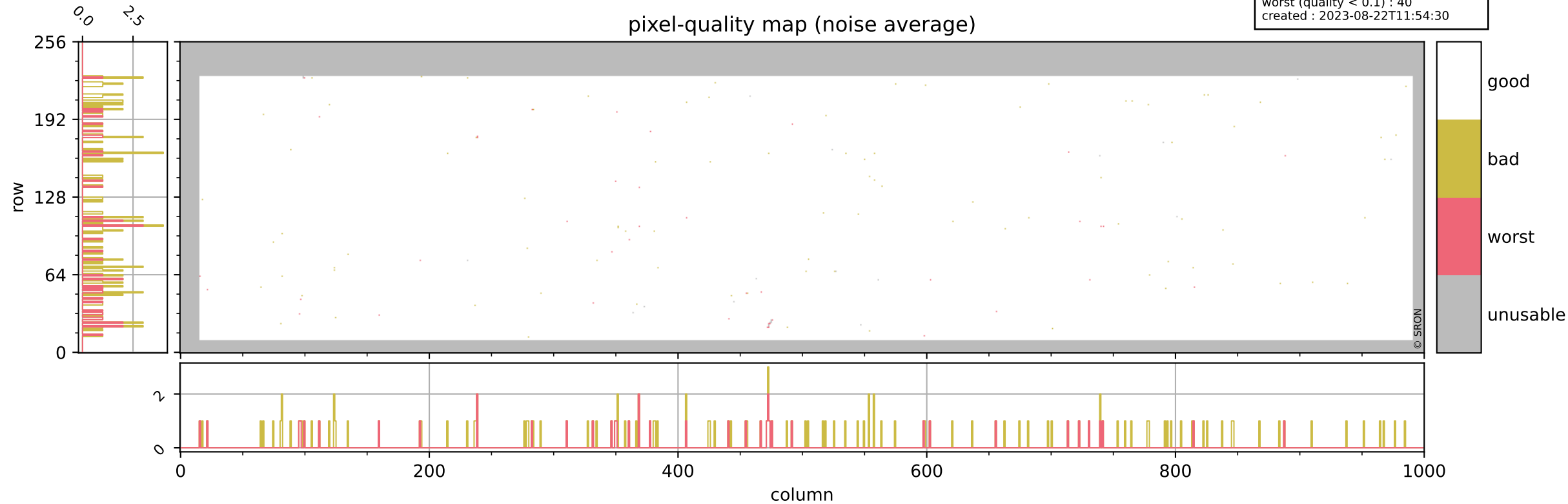
# Tropomi SWIR pixel quality (beta nominal)

orbits : 18 in [6247, 6292]  
coverage : 2018-12-27 / 2018-12-30  
bad (quality < 0.8) : 290  
worst (quality < 0.1) : 118  
created : 2023-08-22T11:54:30



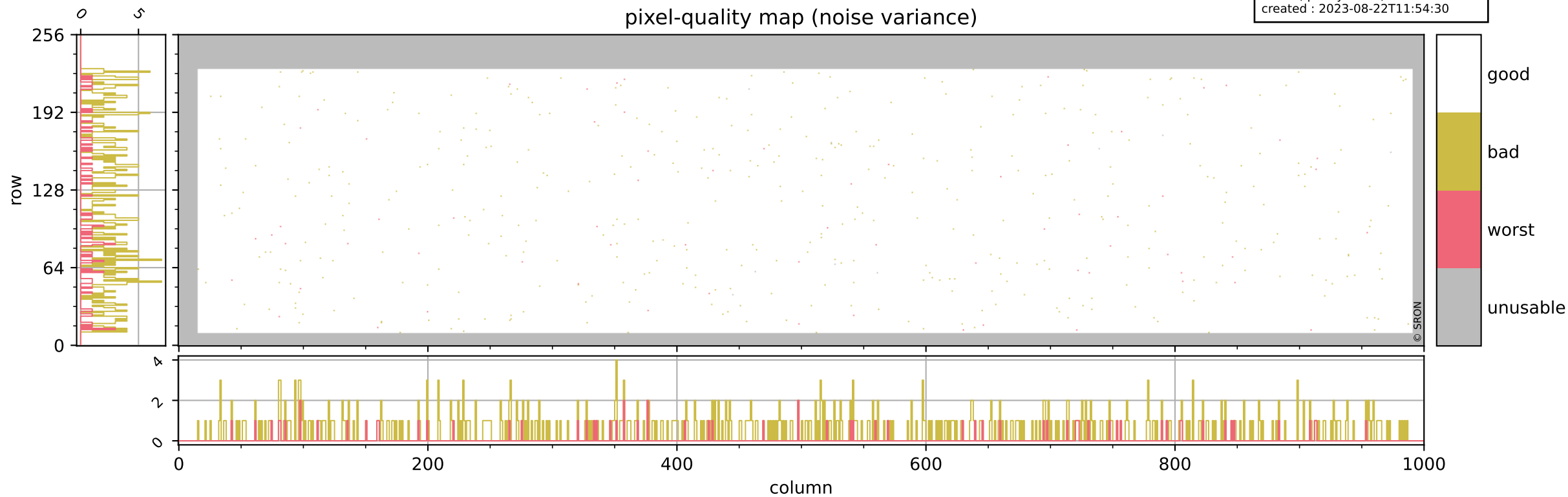
# Tropomi SWIR pixel quality (beta nominal)

orbits : 18 in [6247, 6292]  
coverage : 2018-12-27 / 2018-12-30  
bad (quality < 0.8) : 129  
worst (quality < 0.1) : 40  
created : 2023-08-22T11:54:30



# Tropomi SWIR pixel quality (beta nominal)

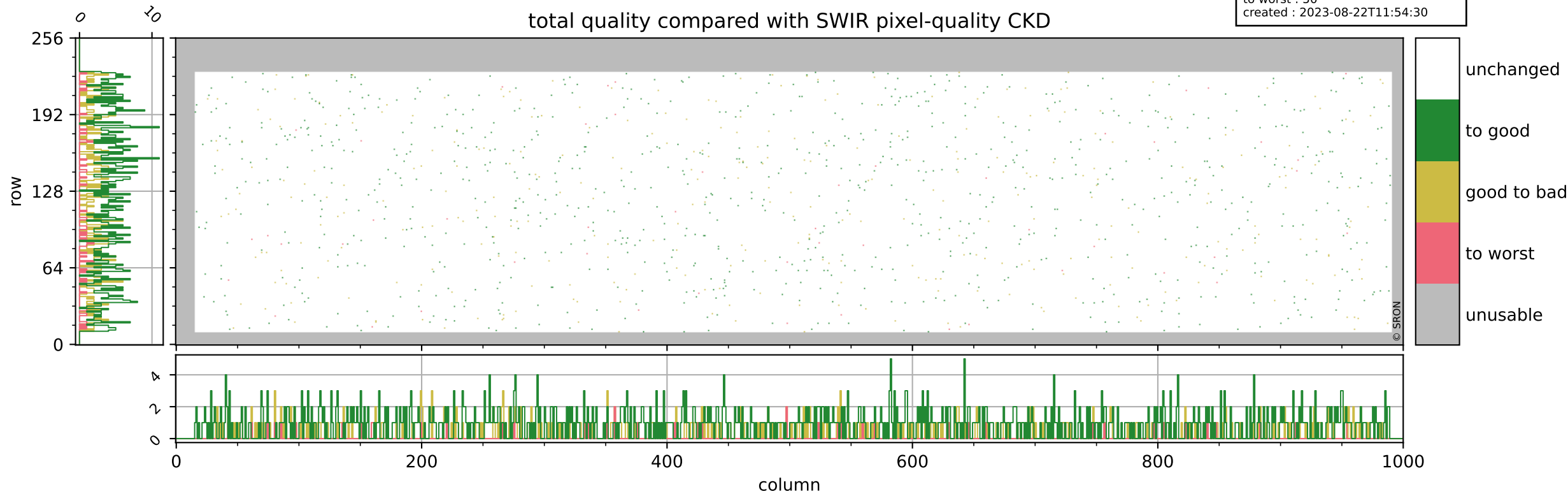
orbits : 18 in [6247, 6292]  
coverage : 2018-12-27 / 2018-12-30  
bad (quality < 0.8) : 488  
worst (quality < 0.1) : 67  
created : 2023-08-22T11:54:30



# Tropomi SWIR pixel quality (beta nominal)

orbits : 18 in [6247, 6292]  
coverage : 2018-12-27 / 2018-12-30  
to good : 866  
good to bad : 335  
to worst : 50  
created : 2023-08-22T11:54:30

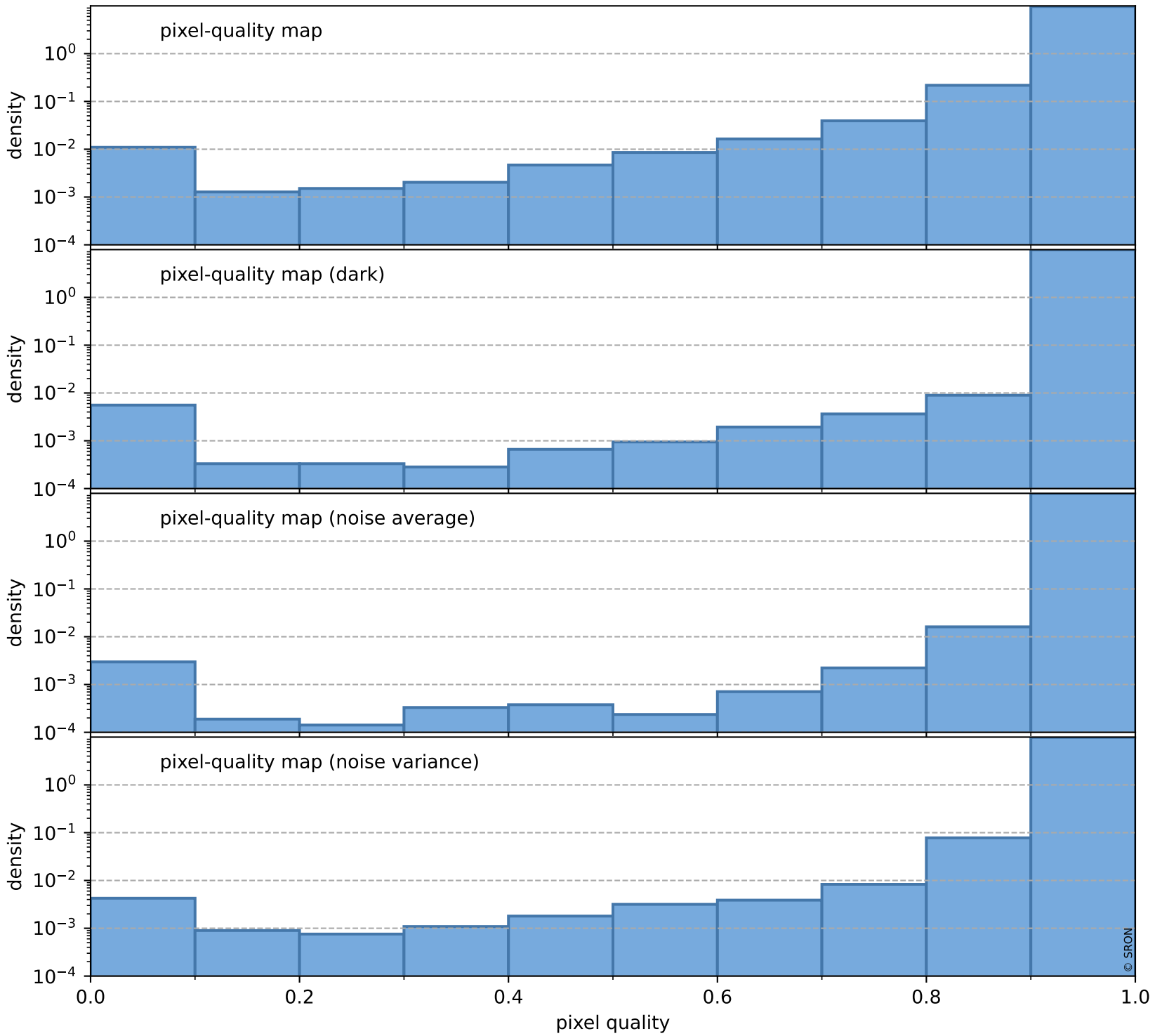
## total quality compared with SWIR pixel-quality CKD



# Tropomi SWIR pixel quality (beta nominal)

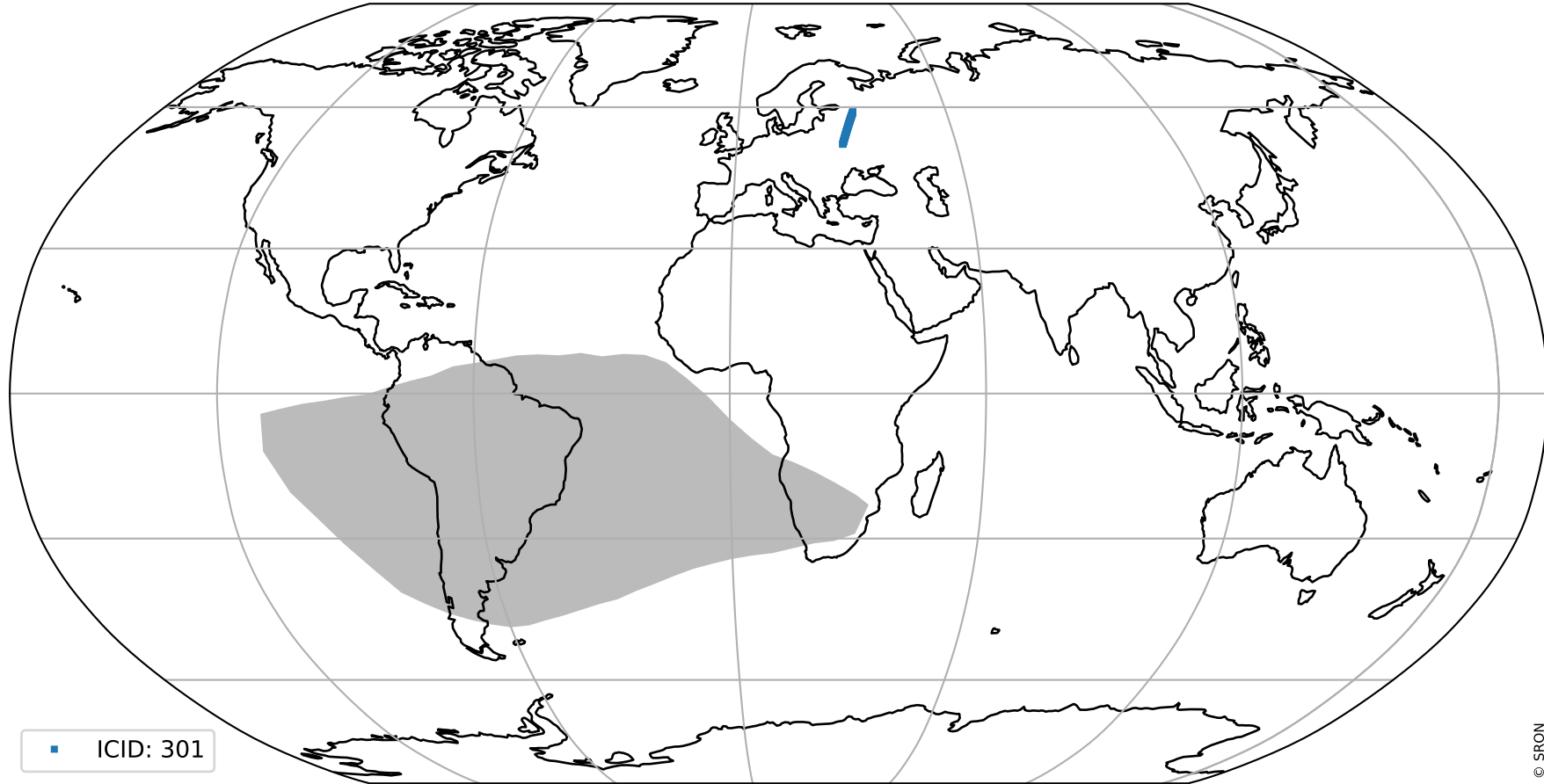
orbits : 18 in [6247, 6292]  
coverage : 2018-12-27 / 2018-12-30  
created : 2023-08-22T11:54:31

## Histograms of pixel-quality



# Tropomi SWIR pixel quality (beta nominal) ground-tracks of Sentinel-5P

orbits : 18 in [6247, 6292]  
coverage : 2018-12-27 / 2018-12-30  
created : 2023-08-22T11:54:31



■ ICID: 301

# Tropomi SWIR pixel quality (beta nominal)

orbits : [1867, 6292]  
coverage : 2018-02-20 / 2018-12-30  
created : 2023-08-22T11:54:31

## trend of pixel quality & temperatures

