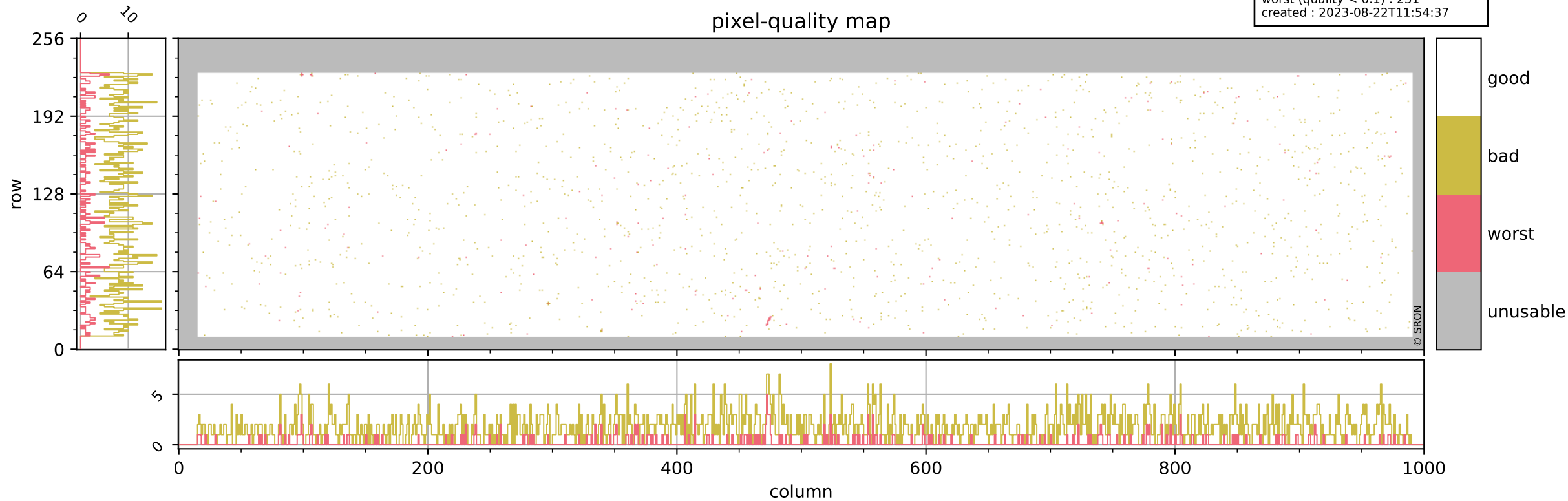


# Tropomi SWIR pixel quality (beta nominal)

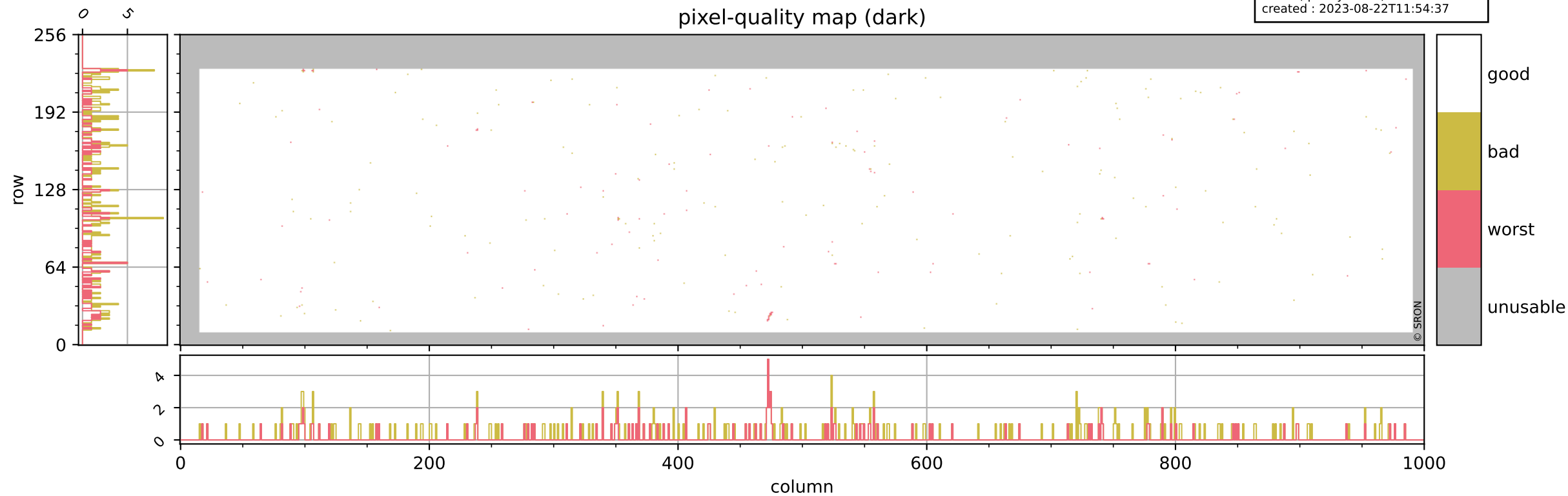
orbits : 20 in [6382, 6427]  
coverage : 2019-01-06 / 2019-01-09  
bad (quality < 0.8) : 1807  
worst (quality < 0.1) : 231  
created : 2023-08-22T11:54:37

## pixel-quality map



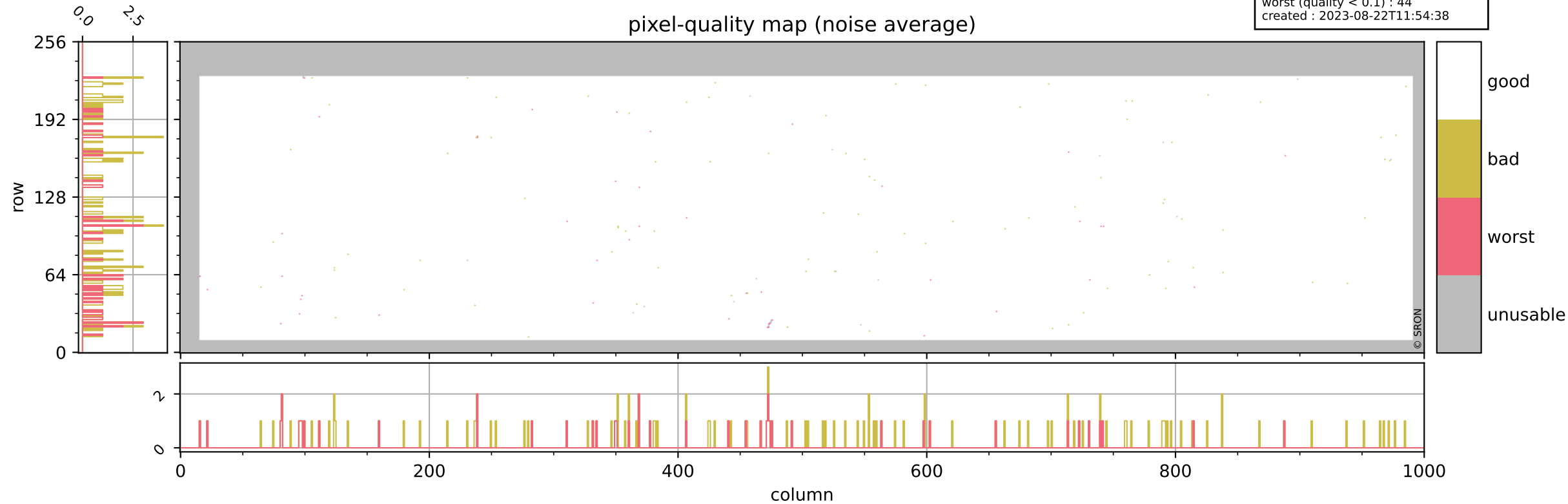
# Tropomi SWIR pixel quality (beta nominal)

orbits : 20 in [6382, 6427]  
coverage : 2019-01-06 / 2019-01-09  
bad (quality < 0.8) : 291  
worst (quality < 0.1) : 116  
created : 2023-08-22T11:54:37



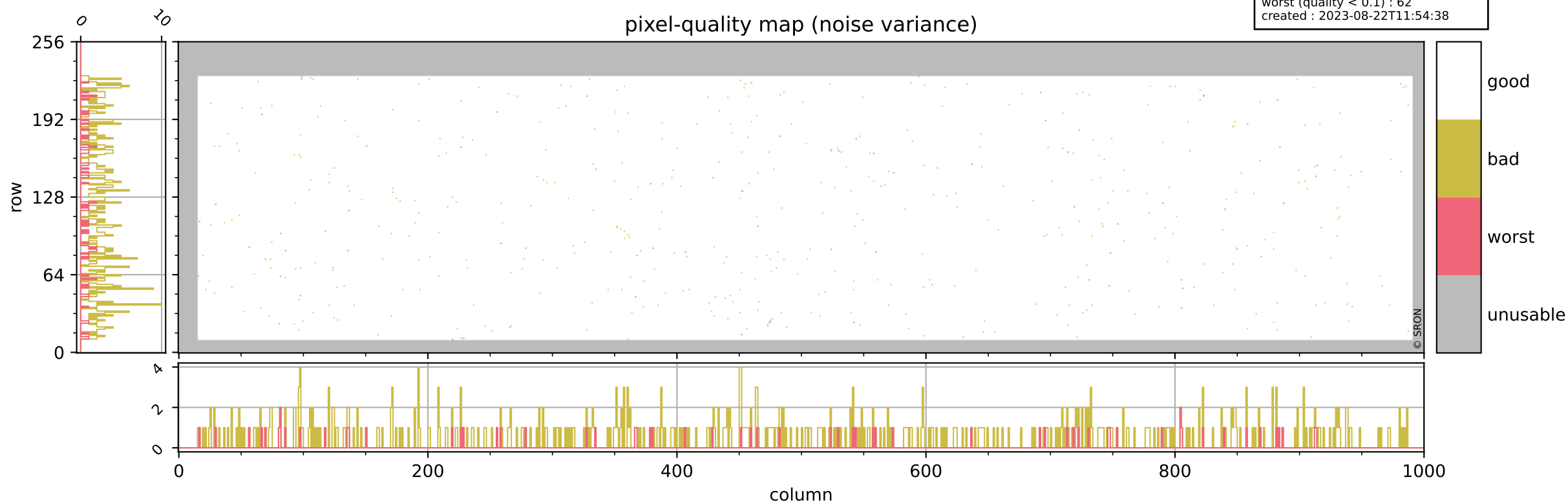
# Tropomi SWIR pixel quality (beta nominal)

orbits : 20 in [6382, 6427]  
coverage : 2019-01-06 / 2019-01-09  
bad (quality < 0.8) : 131  
worst (quality < 0.1) : 44  
created : 2023-08-22T11:54:38



# Tropomi SWIR pixel quality (beta nominal)

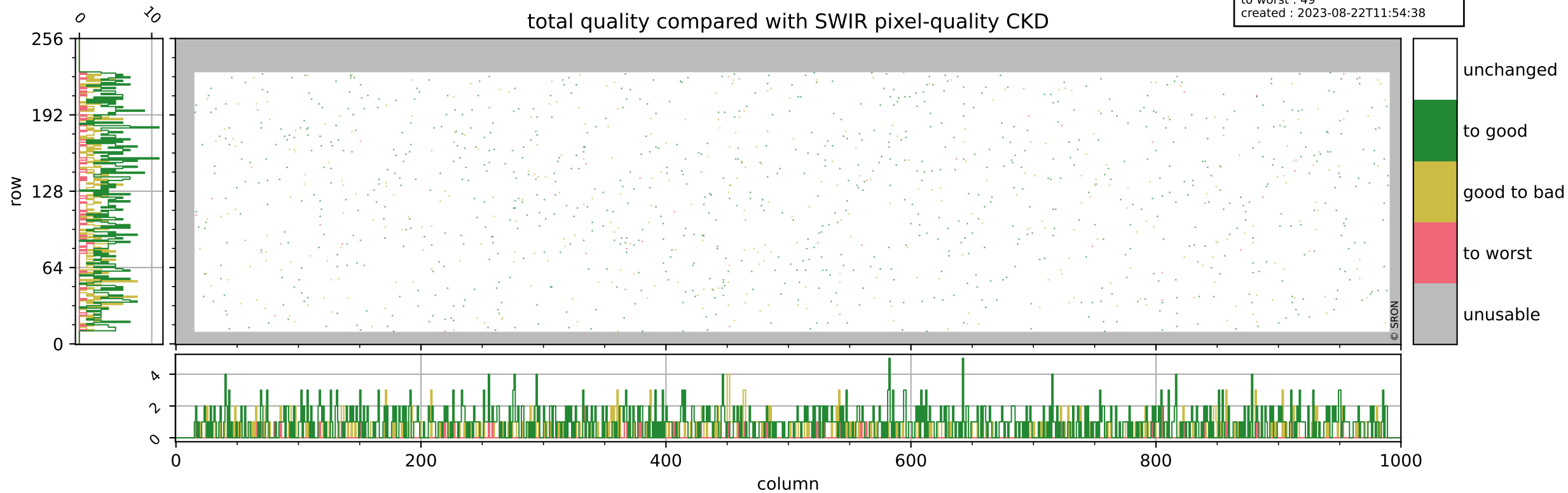
orbits : 20 in [6382, 6427]  
coverage : 2019-01-06 / 2019-01-09  
bad (quality < 0.8) : 487  
worst (quality < 0.1) : 62  
created : 2023-08-22T11:54:38



# Tropomi SWIR pixel quality (beta nominal)

orbits : 20 in [6382, 6427]  
coverage : 2019-01-06 / 2019-01-09  
to good : 869  
good to bad : 353  
to worst : 49  
created : 2023-08-22T11:54:38

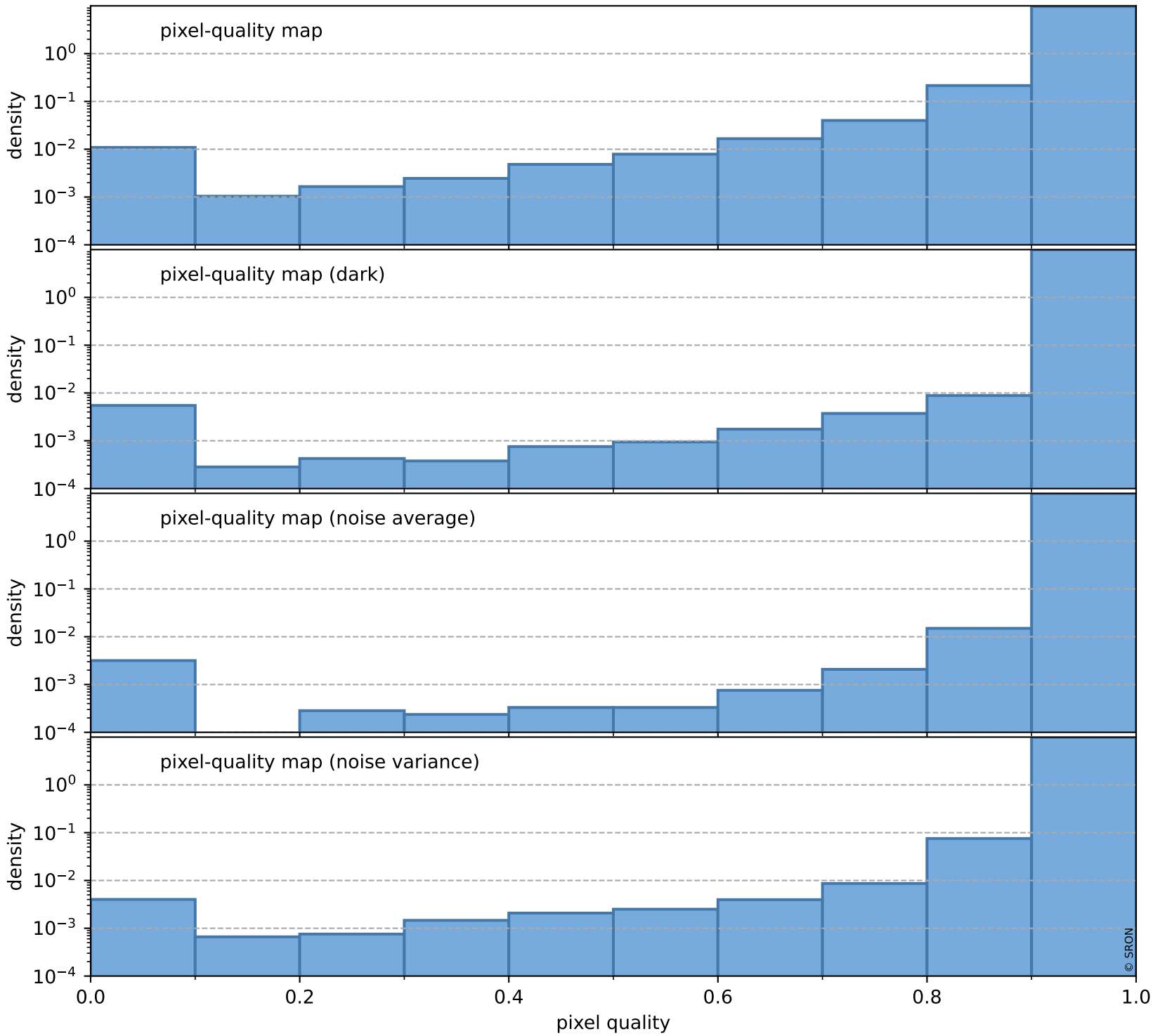
## total quality compared with SWIR pixel-quality CKD



# Tropomi SWIR pixel quality (beta nominal)

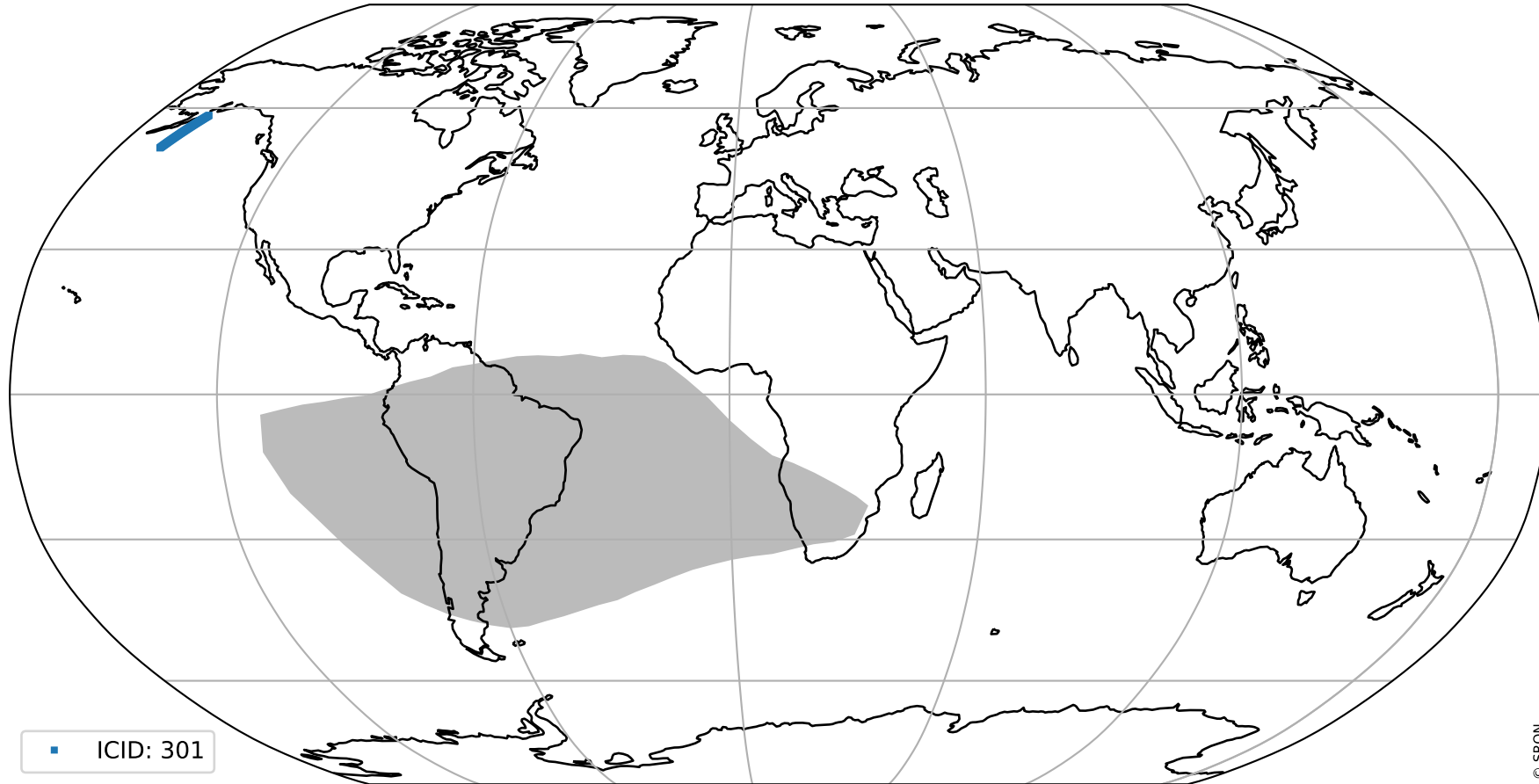
orbits : 20 in [6382, 6427]  
coverage : 2019-01-06 / 2019-01-09  
created : 2023-08-22T11:54:38

## Histograms of pixel-quality



# Tropomi SWIR pixel quality (beta nominal) ground-tracks of Sentinel-5P

orbits : 20 in [6382, 6427]  
coverage : 2019-01-06 / 2019-01-09  
created : 2023-08-22T11:54:39



# Tropomi SWIR pixel quality (beta nominal)

orbits : [1867, 6427]  
coverage : 2018-02-20 / 2019-01-09  
created : 2023-08-22T11:54:39

## trend of pixel quality & temperatures

