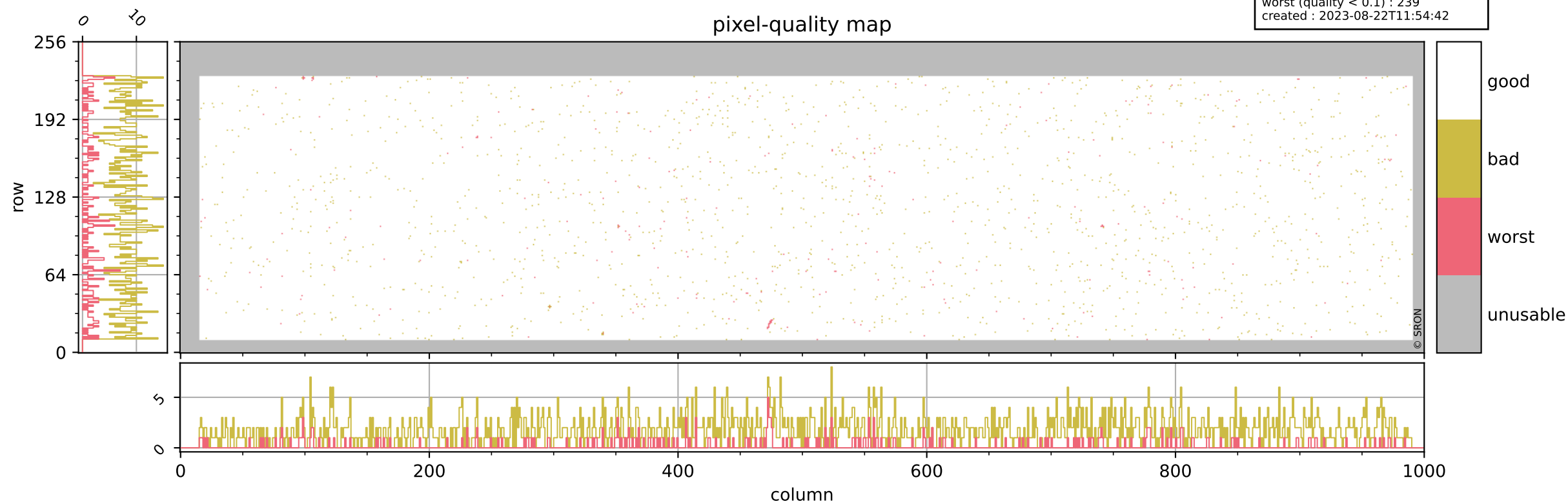


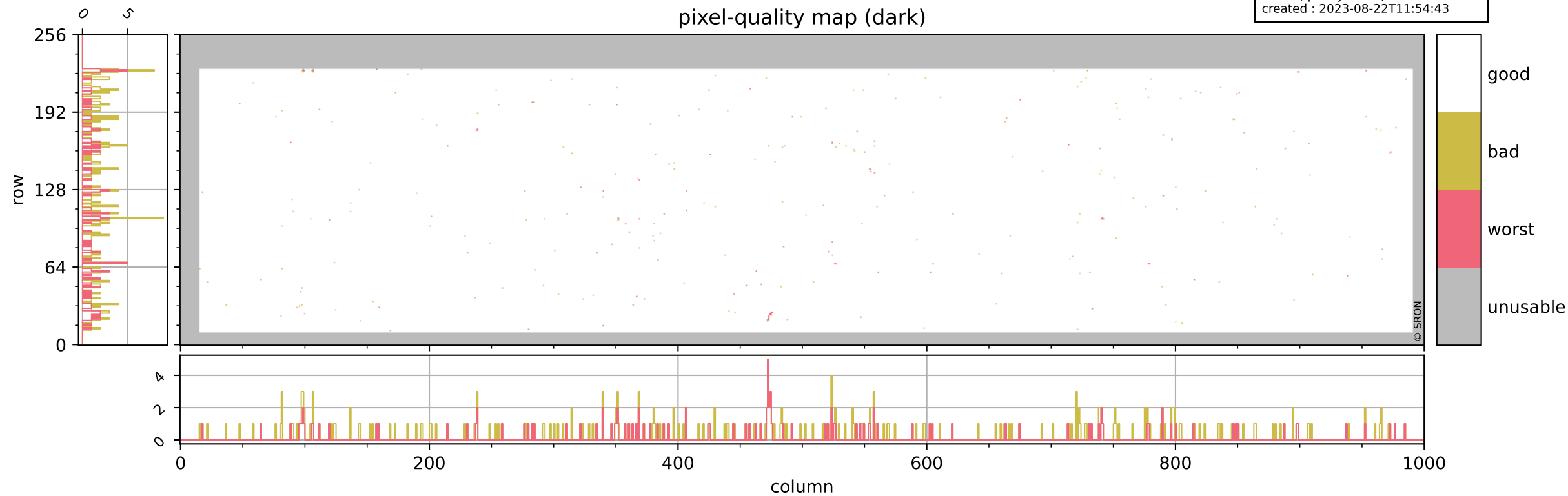
Tropomi SWIR pixel quality (beta nominal)

orbits : 20 in [6472, 6517]
coverage : 2019-01-12 / 2019-01-15
bad (quality < 0.8) : 1808
worst (quality < 0.1) : 239
created : 2023-08-22T11:54:42



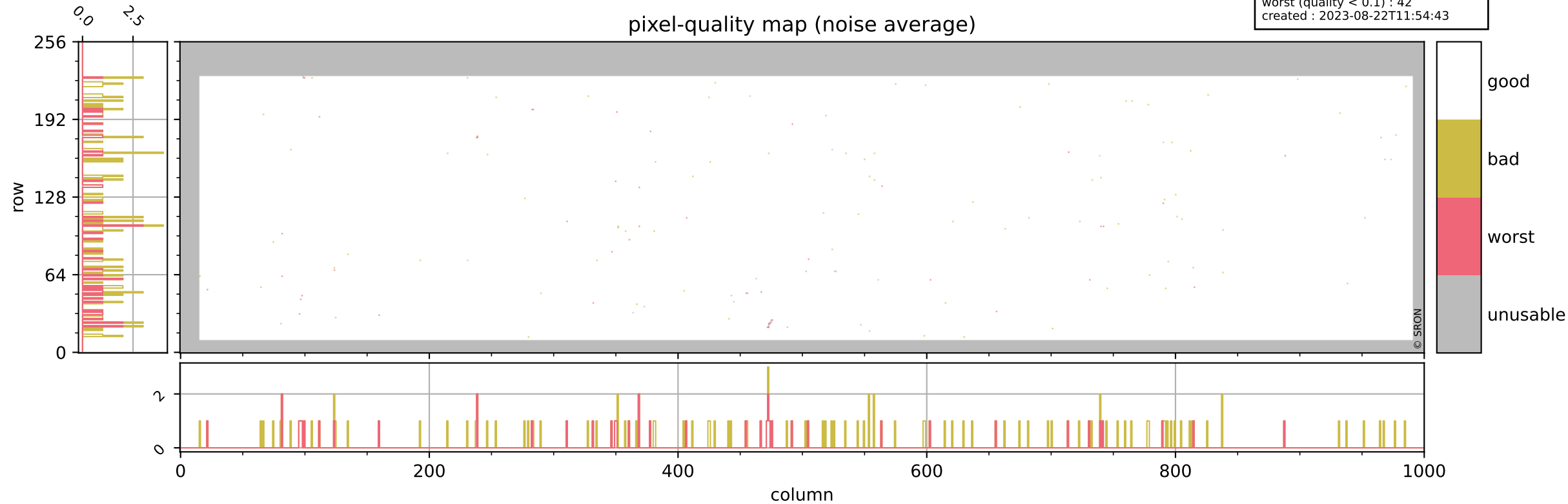
Tropomi SWIR pixel quality (beta nominal)

orbits : 20 in [6472, 6517]
coverage : 2019-01-12 / 2019-01-15
bad (quality < 0.8) : 291
worst (quality < 0.1) : 115
created : 2023-08-22T11:54:43



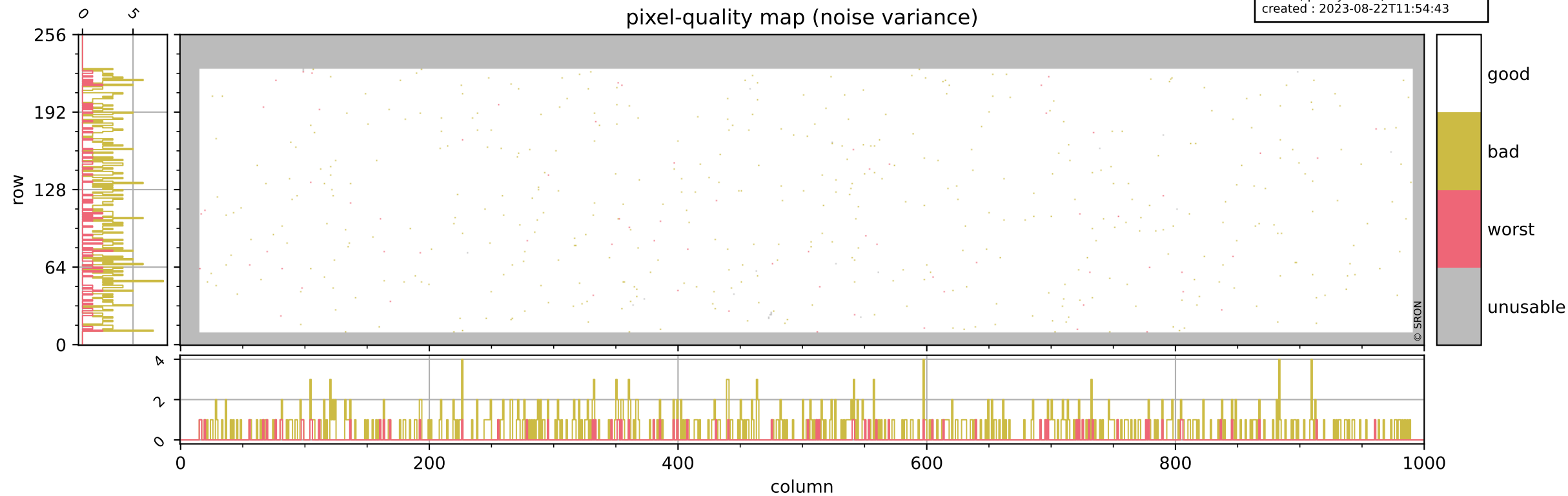
Tropomi SWIR pixel quality (beta nominal)

orbits : 20 in [6472, 6517]
coverage : 2019-01-12 / 2019-01-15
bad (quality < 0.8) : 131
worst (quality < 0.1) : 42
created : 2023-08-22T11:54:43



Tropomi SWIR pixel quality (beta nominal)

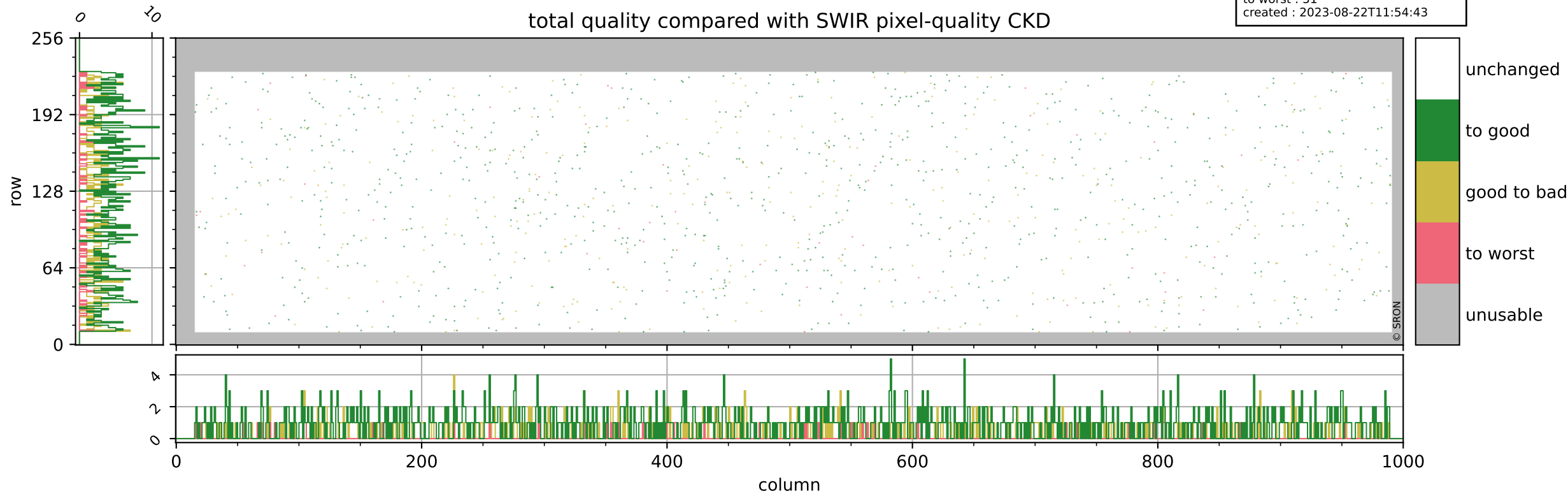
orbits : 20 in [6472, 6517]
coverage : 2019-01-12 / 2019-01-15
bad (quality < 0.8) : 496
worst (quality < 0.1) : 70
created : 2023-08-22T11:54:43



Tropomi SWIR pixel quality (beta nominal)

orbits : 20 in [6472, 6517]
coverage : 2019-01-12 / 2019-01-15
to good : 872
good to bad : 358
to worst : 51
created : 2023-08-22T11:54:43

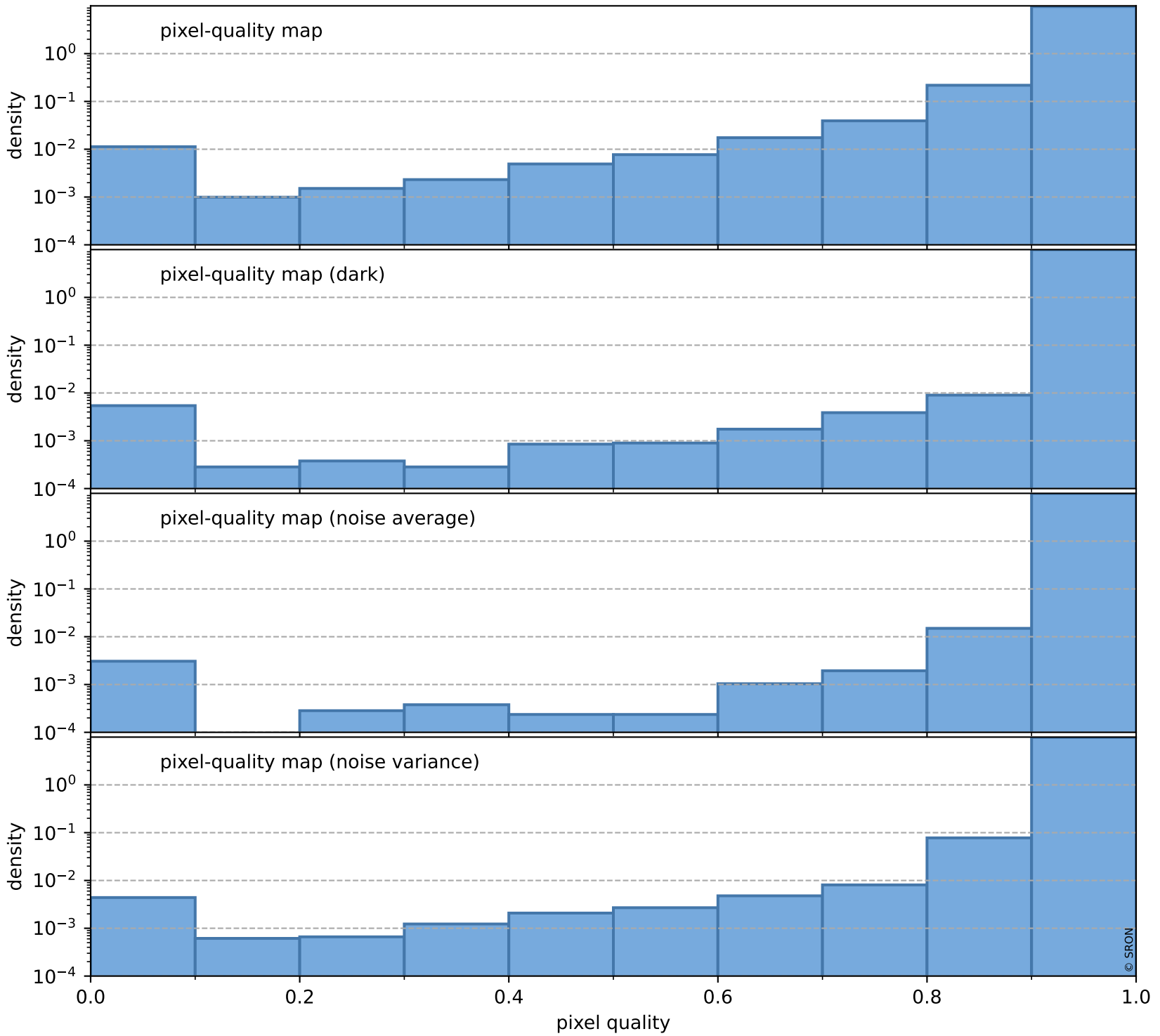
total quality compared with SWIR pixel-quality CKD



Tropomi SWIR pixel quality (beta nominal)

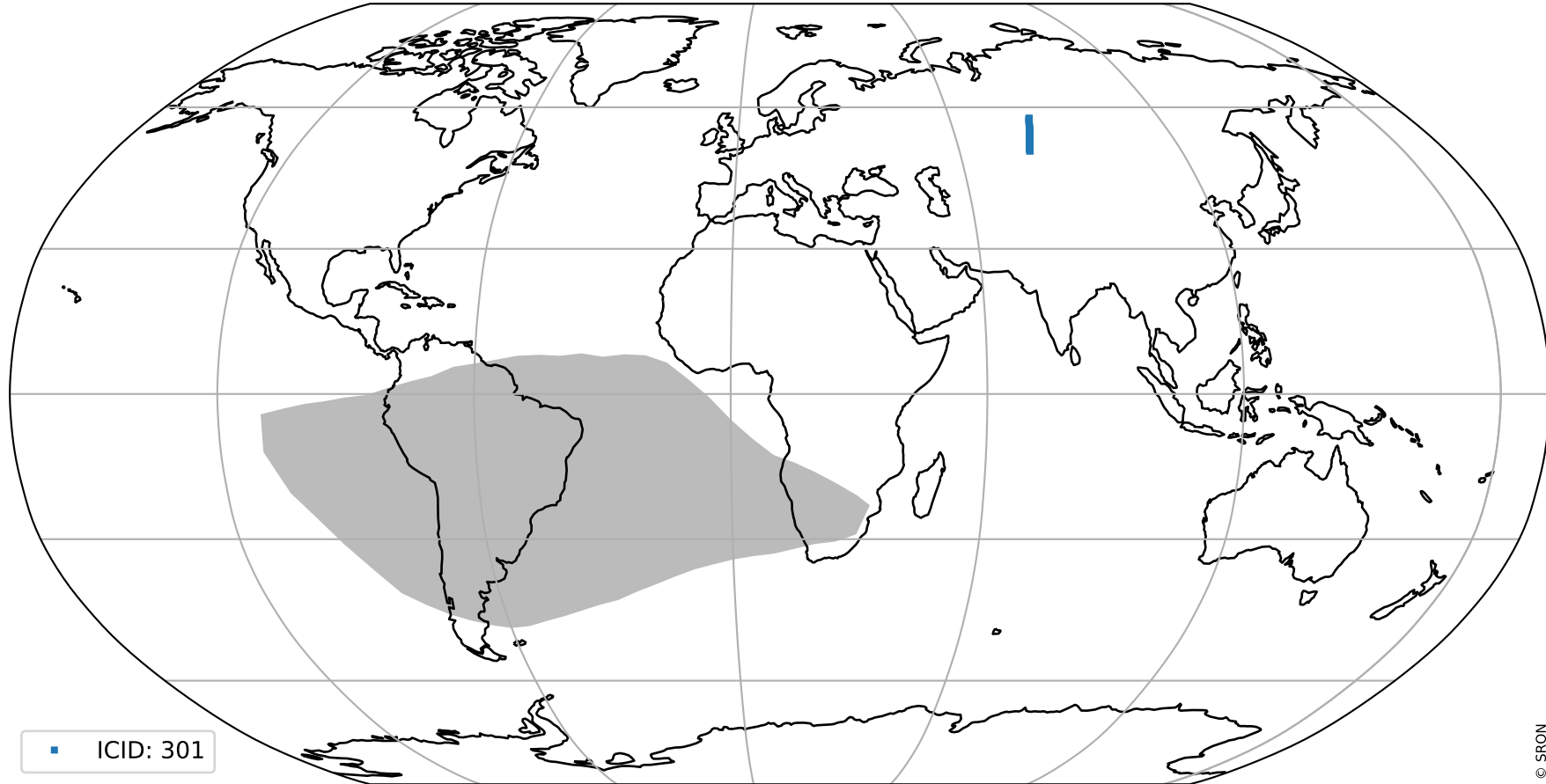
orbits : 20 in [6472, 6517]
coverage : 2019-01-12 / 2019-01-15
created : 2023-08-22T11:54:43

Histograms of pixel-quality



Tropomi SWIR pixel quality (beta nominal) ground-tracks of Sentinel-5P

orbits : 20 in [6472, 6517]
coverage : 2019-01-12 / 2019-01-15
created : 2023-08-22T11:54:44



■ ICID: 301

Tropomi SWIR pixel quality (beta nominal)

orbits : [1867, 6517]
coverage : 2018-02-20 / 2019-01-15
created : 2023-08-22T11:54:44

trend of pixel quality & temperatures

