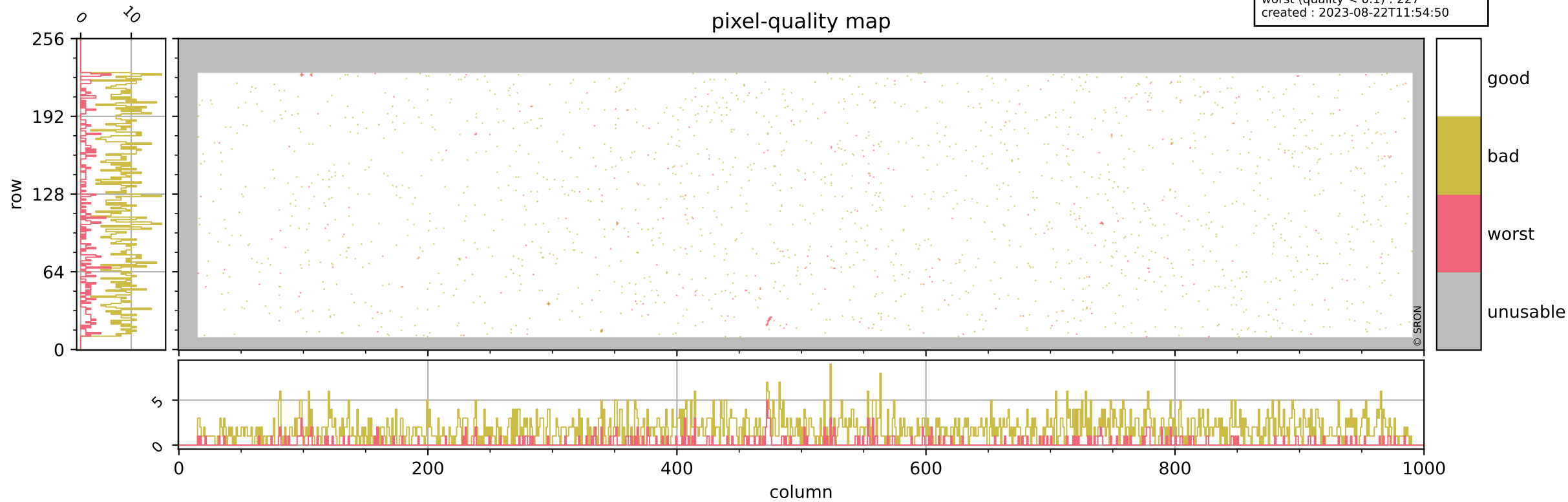


Tropomi SWIR pixel quality (beta nominal)

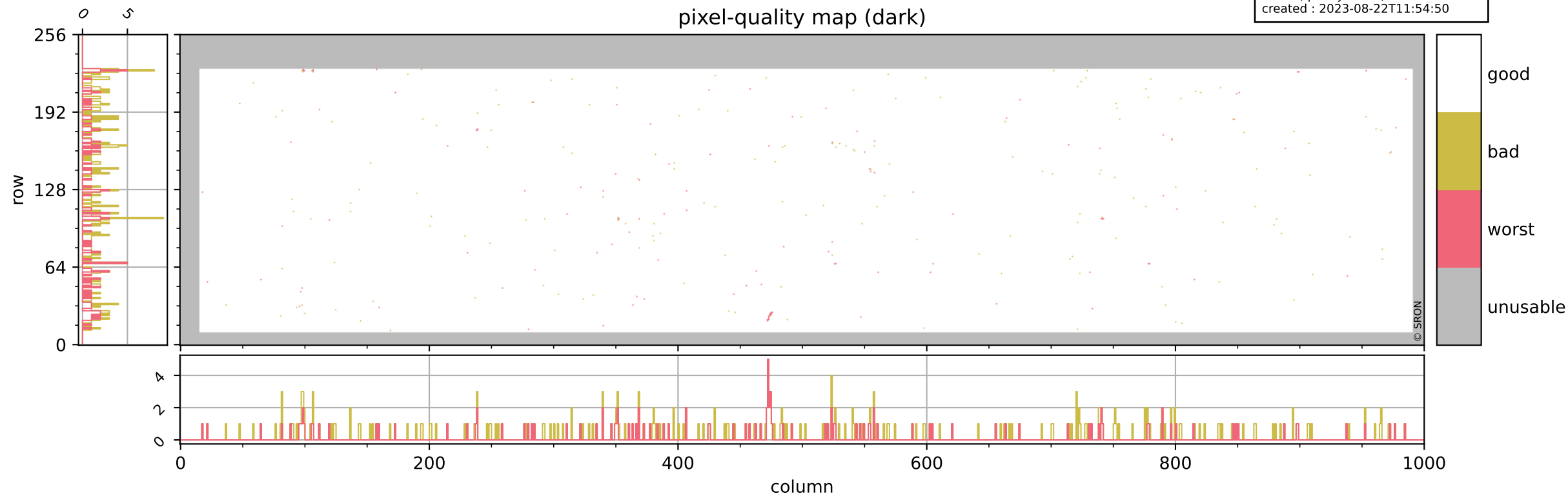
orbits : 18 in [6607, 6652]
coverage : 2019-01-22 / 2019-01-25
bad (quality < 0.8) : 1827
worst (quality < 0.1) : 227
created : 2023-08-22T11:54:50

pixel-quality map



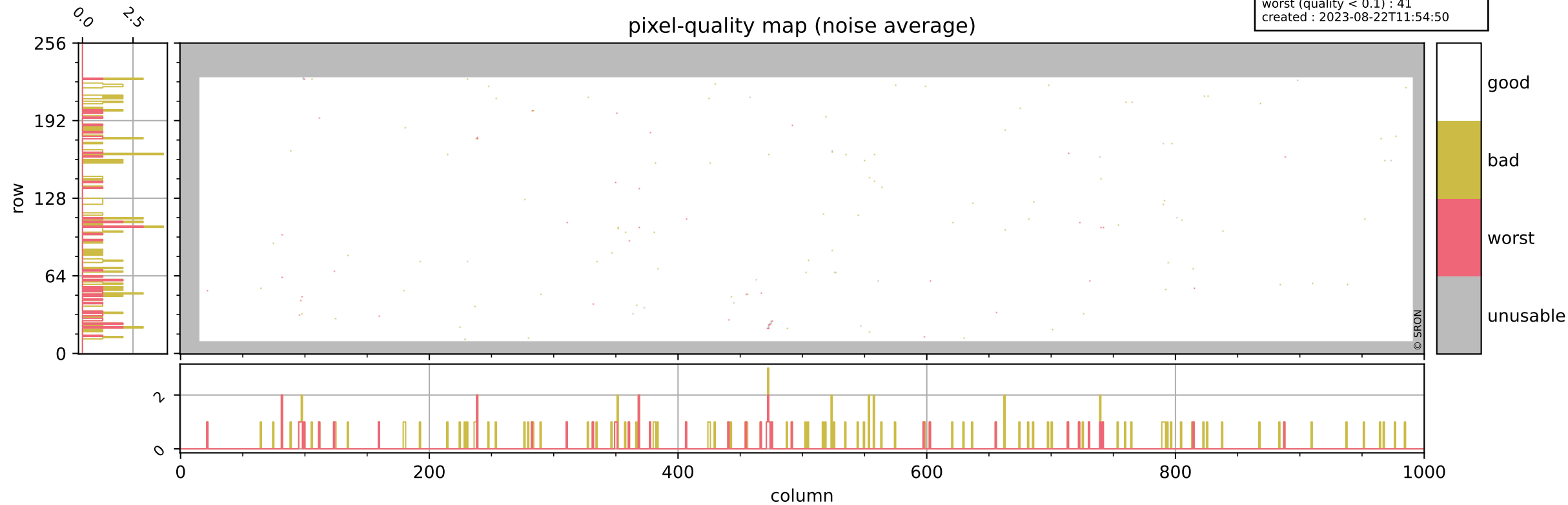
Tropomi SWIR pixel quality (beta nominal)

orbits : 18 in [6607, 6652]
coverage : 2019-01-22 / 2019-01-25
bad (quality < 0.8) : 292
worst (quality < 0.1) : 118
created : 2023-08-22T11:54:50



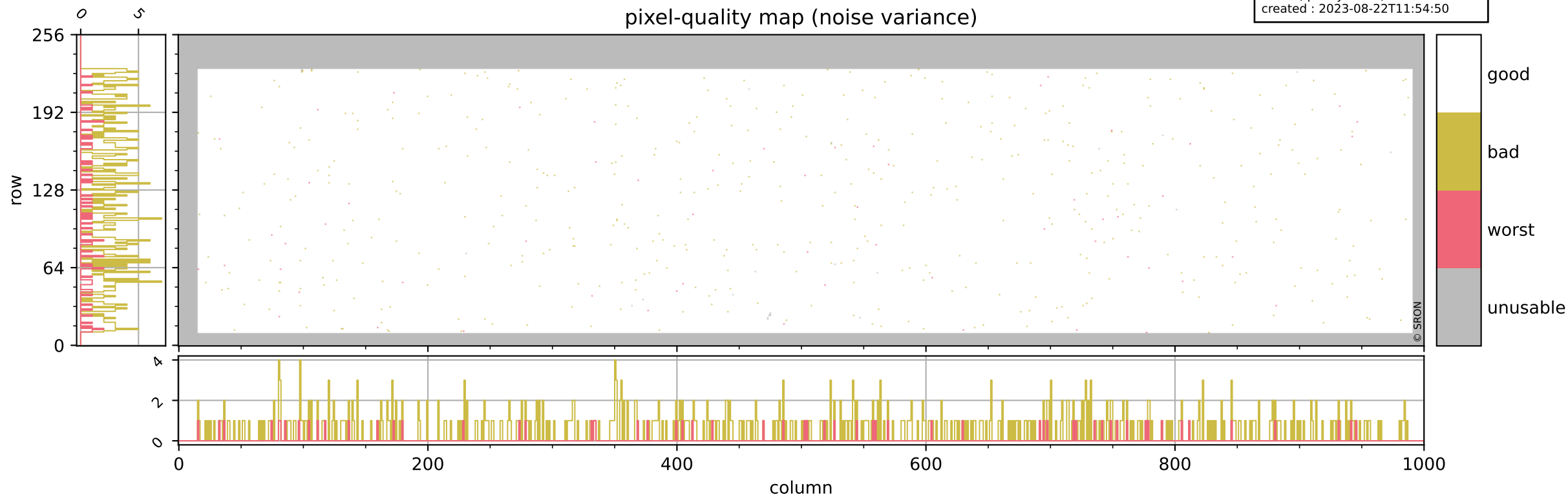
Tropomi SWIR pixel quality (beta nominal)

orbits : 18 in [6607, 6652]
coverage : 2019-01-22 / 2019-01-25
bad (quality < 0.8) : 131
worst (quality < 0.1) : 41
created : 2023-08-22T11:54:50



Tropomi SWIR pixel quality (beta nominal)

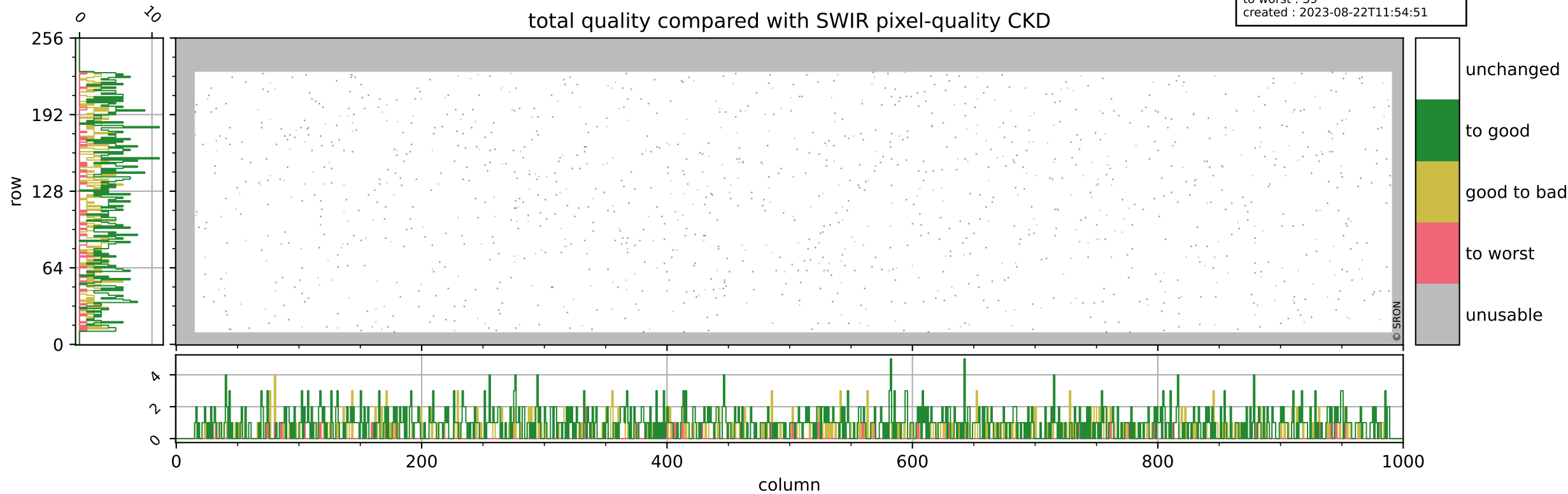
orbits : 18 in [6607, 6652]
coverage : 2019-01-22 / 2019-01-25
bad (quality < 0.8) : 526
worst (quality < 0.1) : 59
created : 2023-08-22T11:54:50



Tropomi SWIR pixel quality (beta nominal)

orbits : 18 in [6607, 6652]
coverage : 2019-01-22 / 2019-01-25
to good : 865
good to bad : 380
to worst : 39
created : 2023-08-22T11:54:51

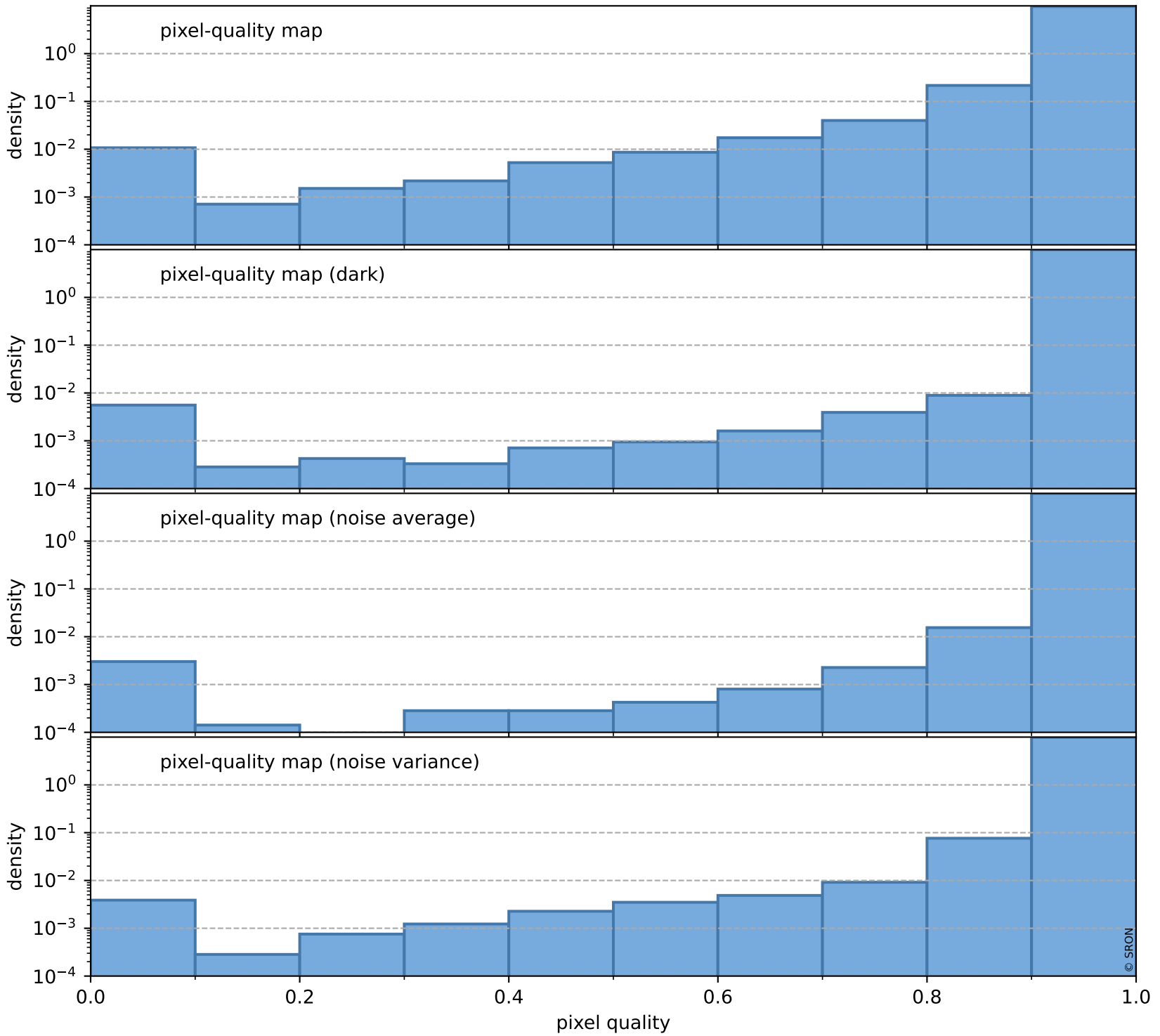
total quality compared with SWIR pixel-quality CKD



Tropomi SWIR pixel quality (beta nominal)

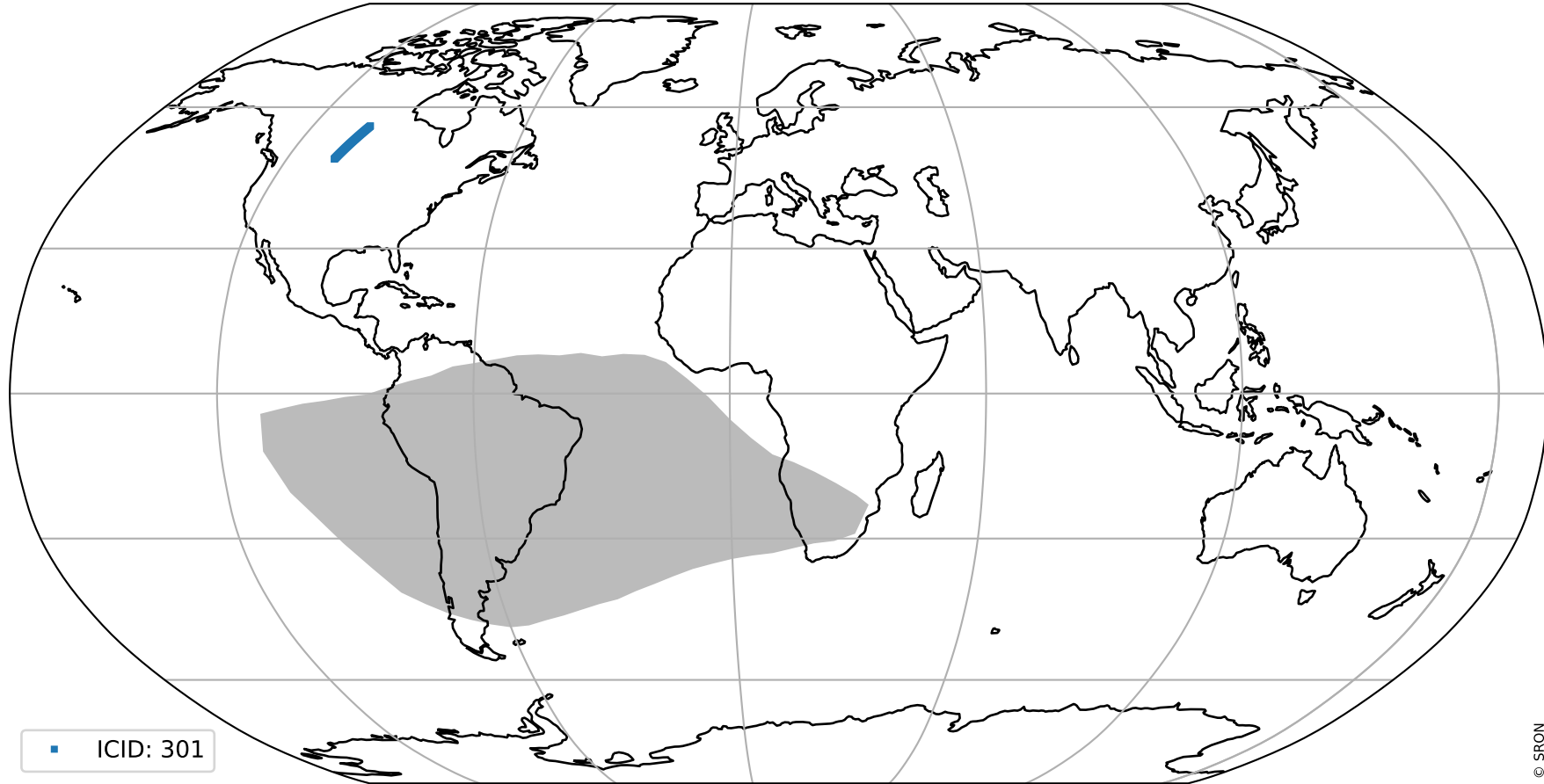
orbits : 18 in [6607, 6652]
coverage : 2019-01-22 / 2019-01-25
created : 2023-08-22T11:54:51

Histograms of pixel-quality



Tropomi SWIR pixel quality (beta nominal) ground-tracks of Sentinel-5P

orbits : 18 in [6607, 6652]
coverage : 2019-01-22 / 2019-01-25
created : 2023-08-22T11:54:52



Tropomi SWIR pixel quality (beta nominal)

orbits : [1867, 6652]
coverage : 2018-02-20 / 2019-01-25
created : 2023-08-22T11:54:52

trend of pixel quality & temperatures

