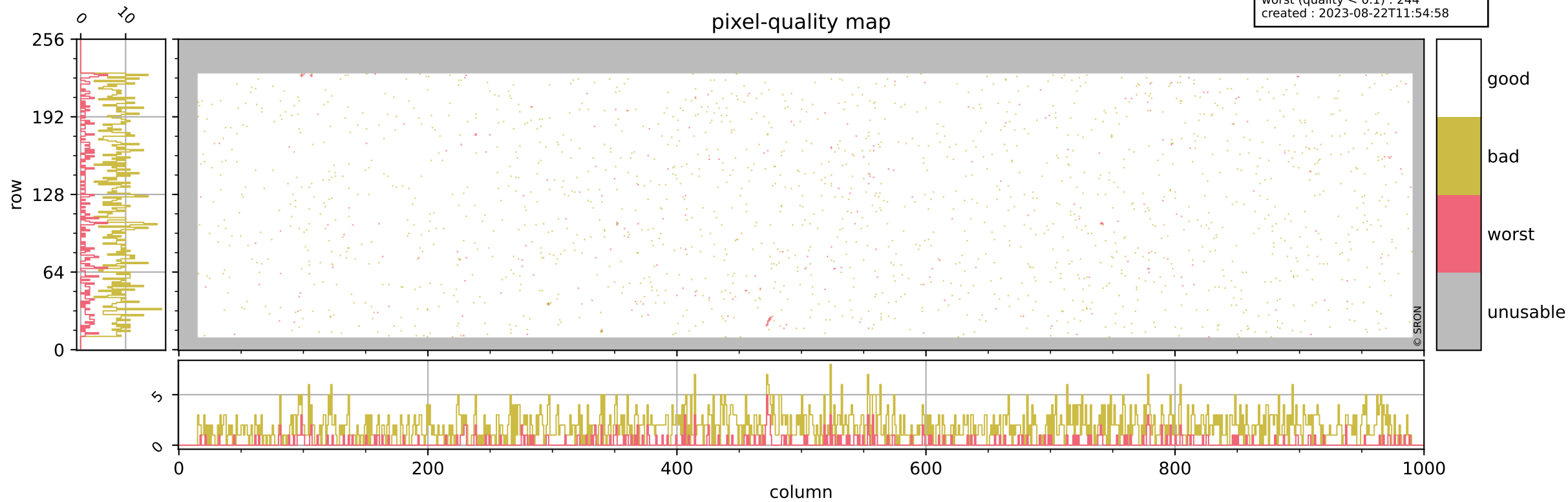


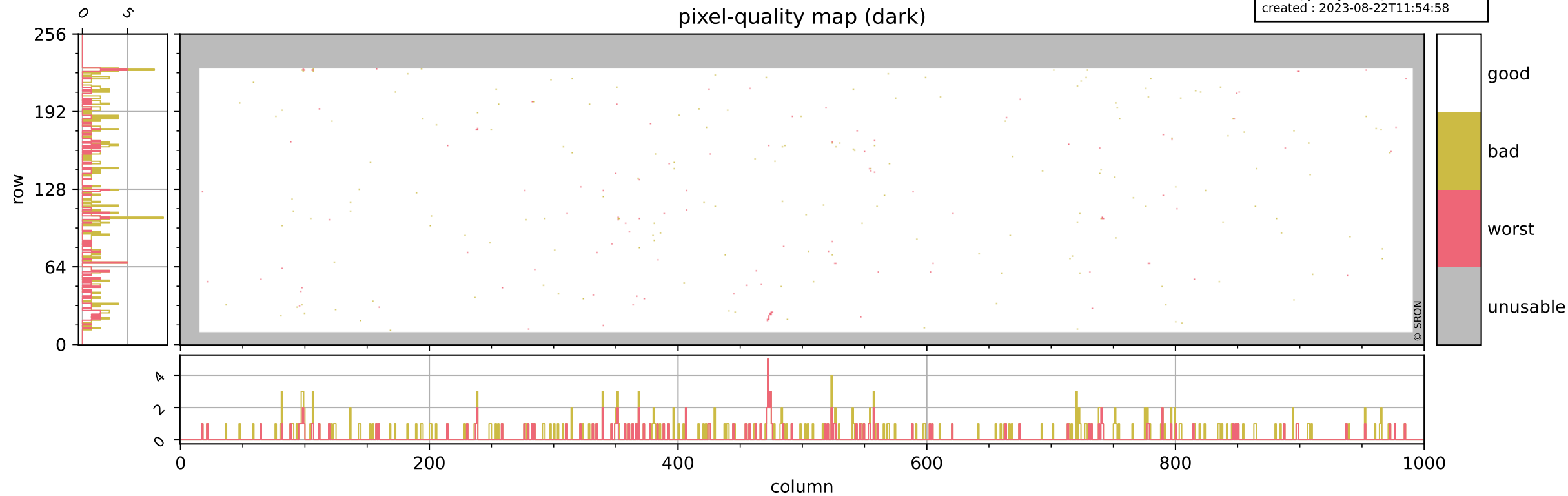
Tropomi SWIR pixel quality (beta nominal)

orbits : 20 in [6742, 6787]
coverage : 2019-01-31 / 2019-02-03
bad (quality < 0.8) : 1840
worst (quality < 0.1) : 244
created : 2023-08-22T11:54:58



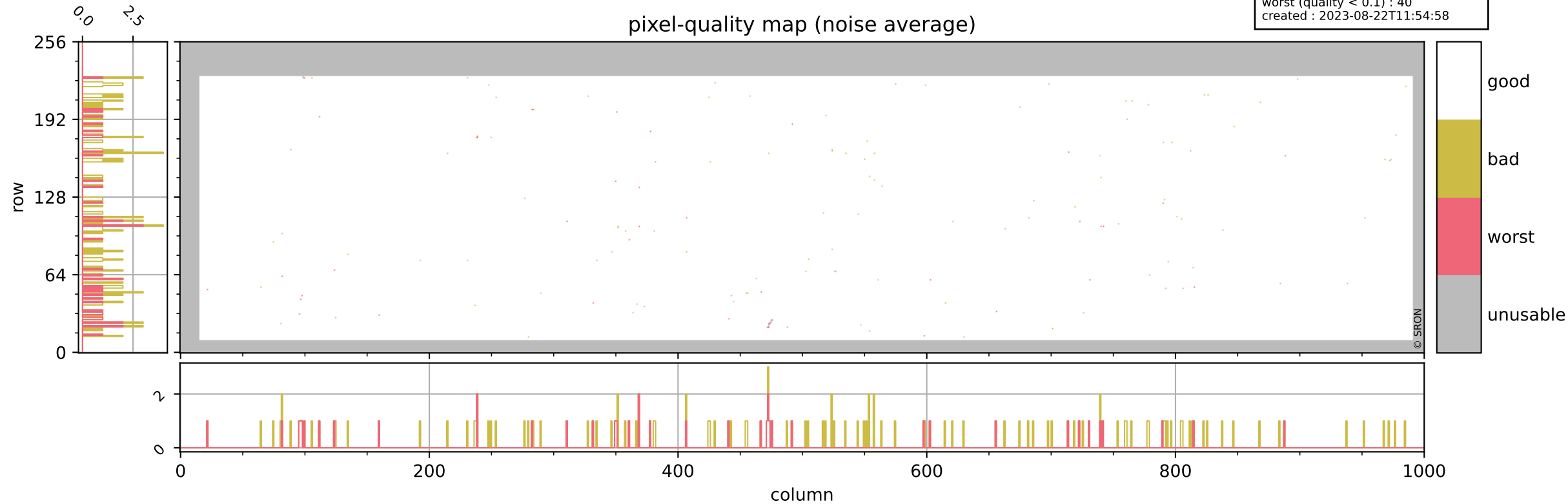
Tropomi SWIR pixel quality (beta nominal)

orbits : 20 in [6742, 6787]
coverage : 2019-01-31 / 2019-02-03
bad (quality < 0.8) : 291
worst (quality < 0.1) : 118
created : 2023-08-22T11:54:58



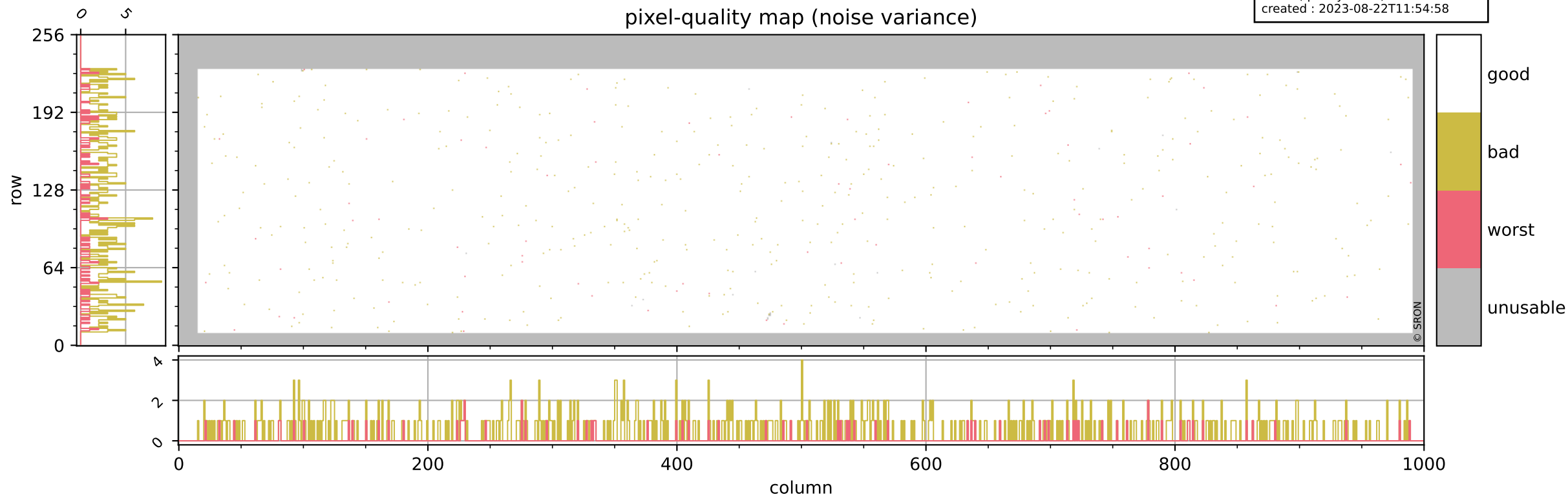
Tropomi SWIR pixel quality (beta nominal)

orbits : 20 in [6742, 6787]
coverage : 2019-01-31 / 2019-02-03
bad (quality < 0.8) : 134
worst (quality < 0.1) : 40
created : 2023-08-22T11:54:58



Tropomi SWIR pixel quality (beta nominal)

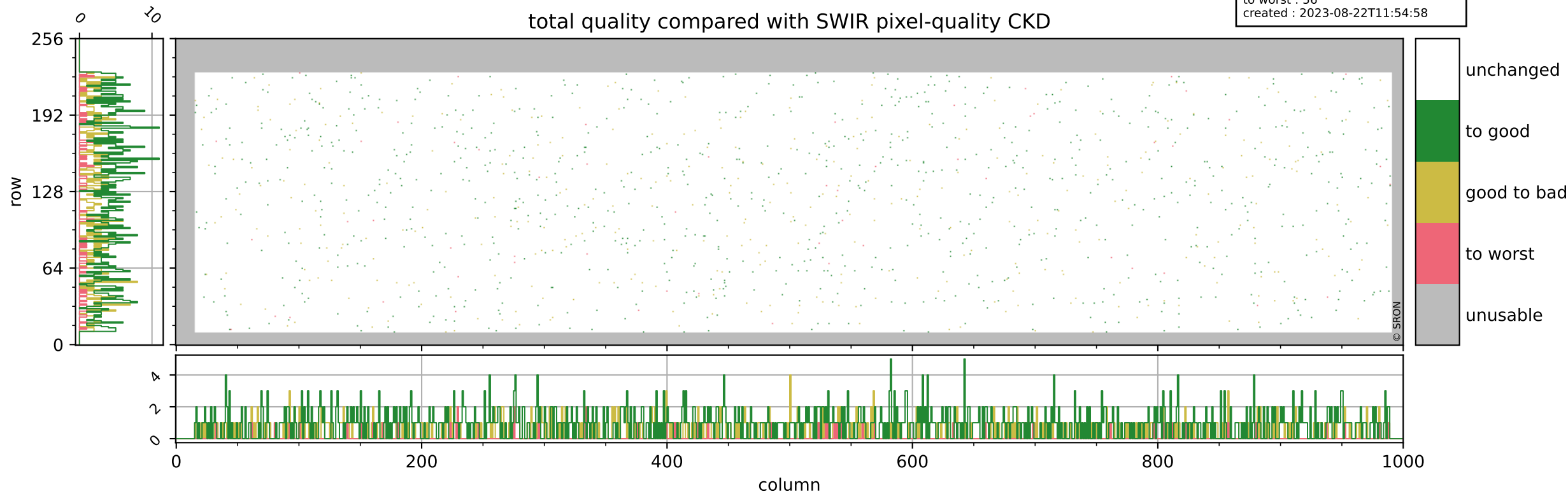
orbits : 20 in [6742, 6787]
coverage : 2019-01-31 / 2019-02-03
bad (quality < 0.8) : 526
worst (quality < 0.1) : 75
created : 2023-08-22T11:54:58



Tropomi SWIR pixel quality (beta nominal)

orbits : 20 in [6742, 6787]
coverage : 2019-01-31 / 2019-02-03
to good : 866
good to bad : 378
to worst : 56
created : 2023-08-22T11:54:58

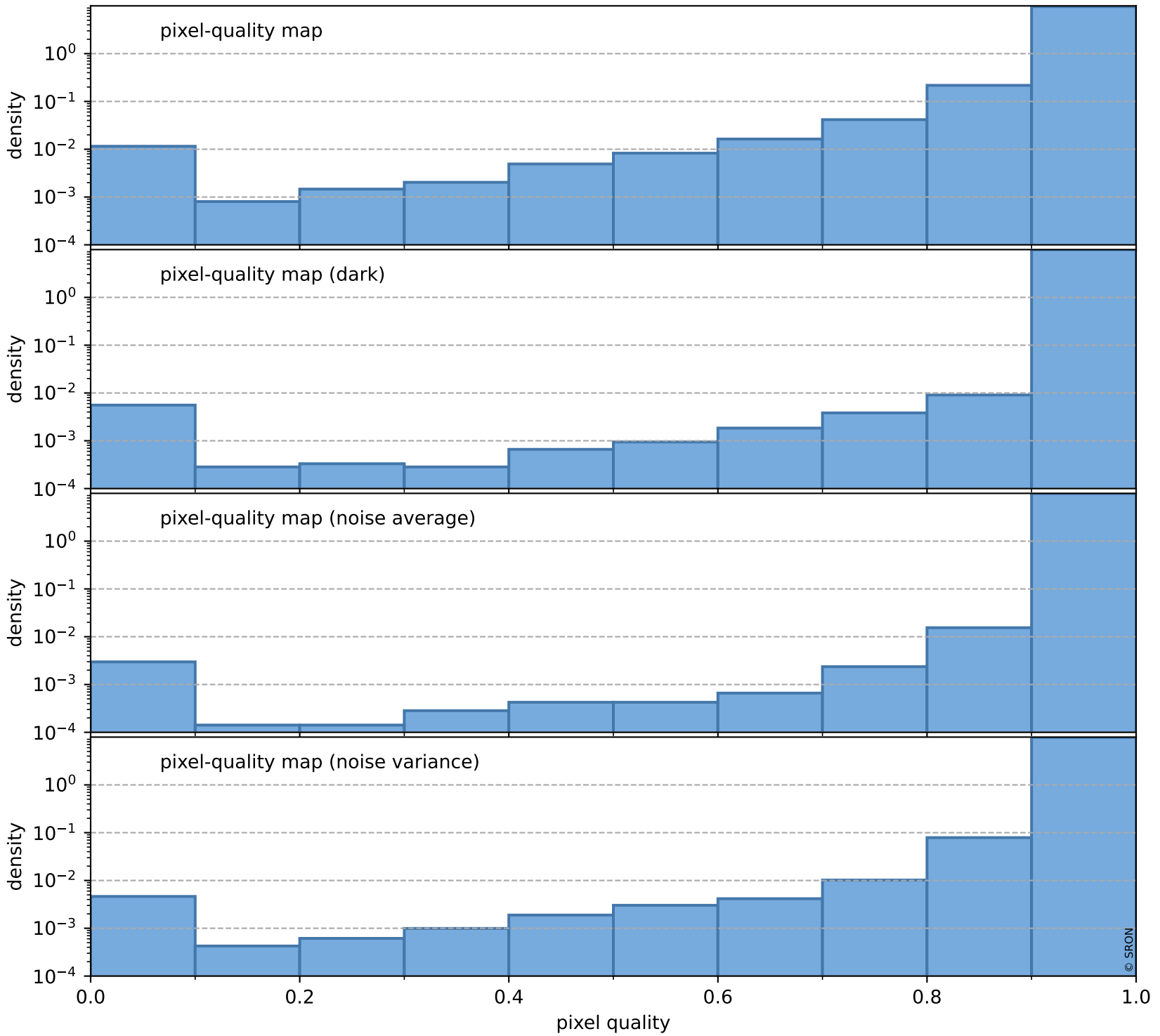
total quality compared with SWIR pixel-quality CKD



Tropomi SWIR pixel quality (beta nominal)

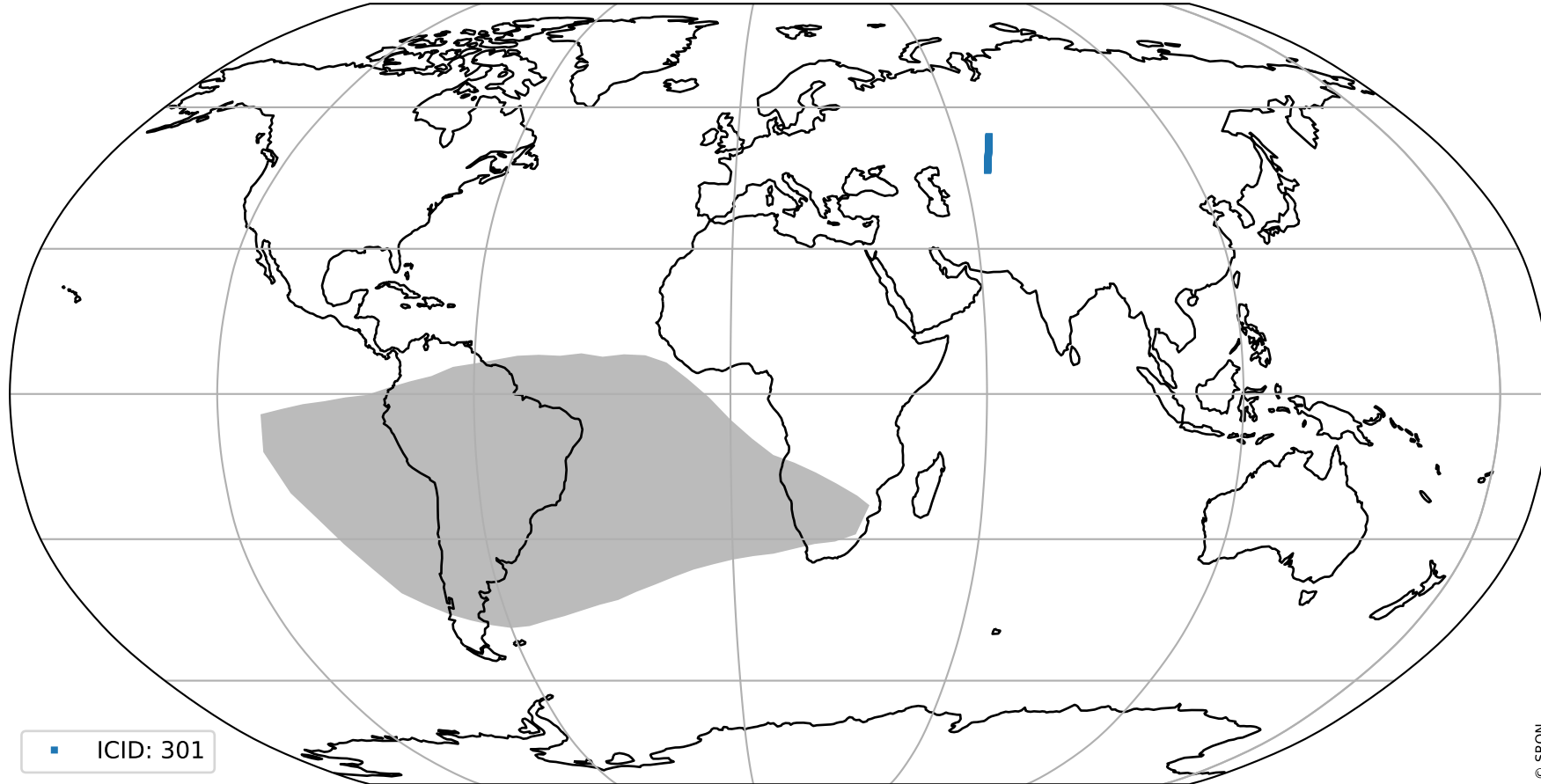
orbits : 20 in [6742, 6787]
coverage : 2019-01-31 / 2019-02-03
created : 2023-08-22T11:54:59

Histograms of pixel-quality



Tropomi SWIR pixel quality (beta nominal) ground-tracks of Sentinel-5P

orbits : 20 in [6742, 6787]
coverage : 2019-01-31 / 2019-02-03
created : 2023-08-22T11:54:59



Tropomi SWIR pixel quality (beta nominal)

orbits : [1867, 6787]
coverage : 2018-02-20 / 2019-02-03
created : 2023-08-22T11:55:00

trend of pixel quality & temperatures

