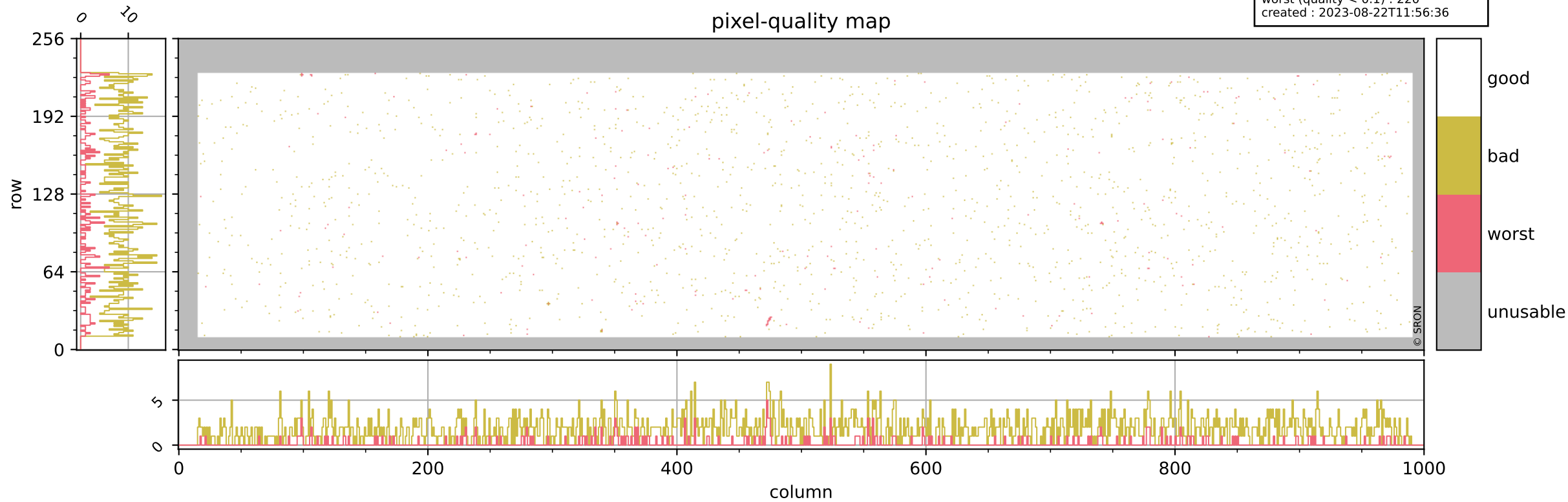


Tropomi SWIR pixel quality (beta nominal)

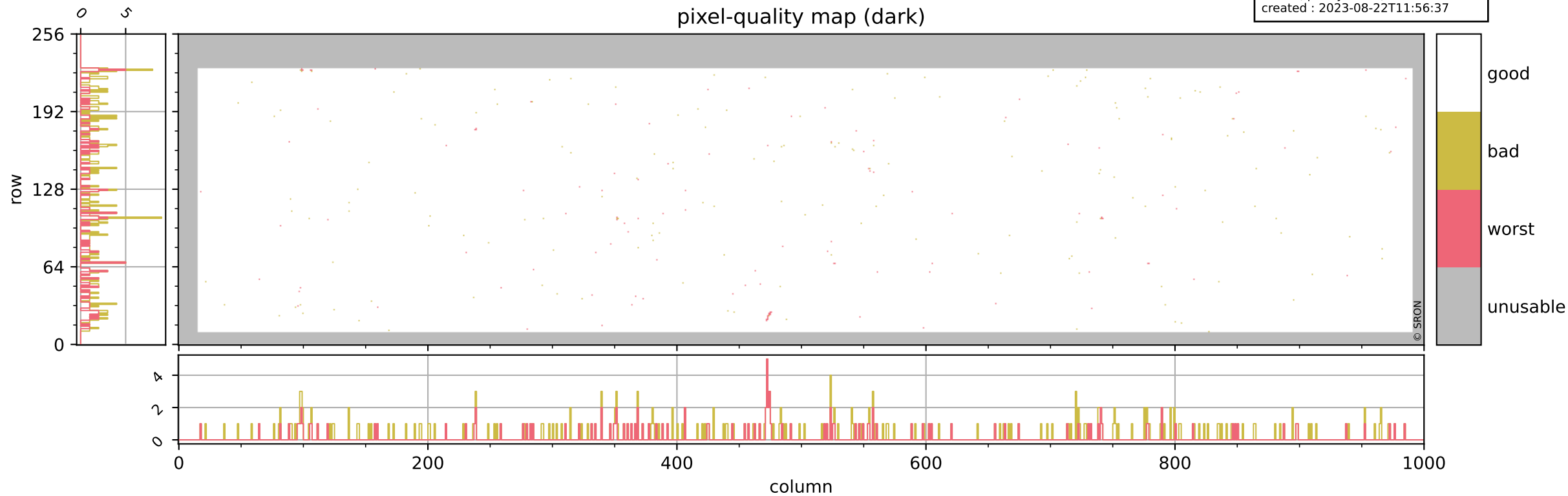
orbits : 20 in [8452, 8497]
coverage : 2019-06-01 / 2019-06-04
bad (quality < 0.8) : 1839
worst (quality < 0.1) : 220
created : 2023-08-22T11:56:36

pixel-quality map



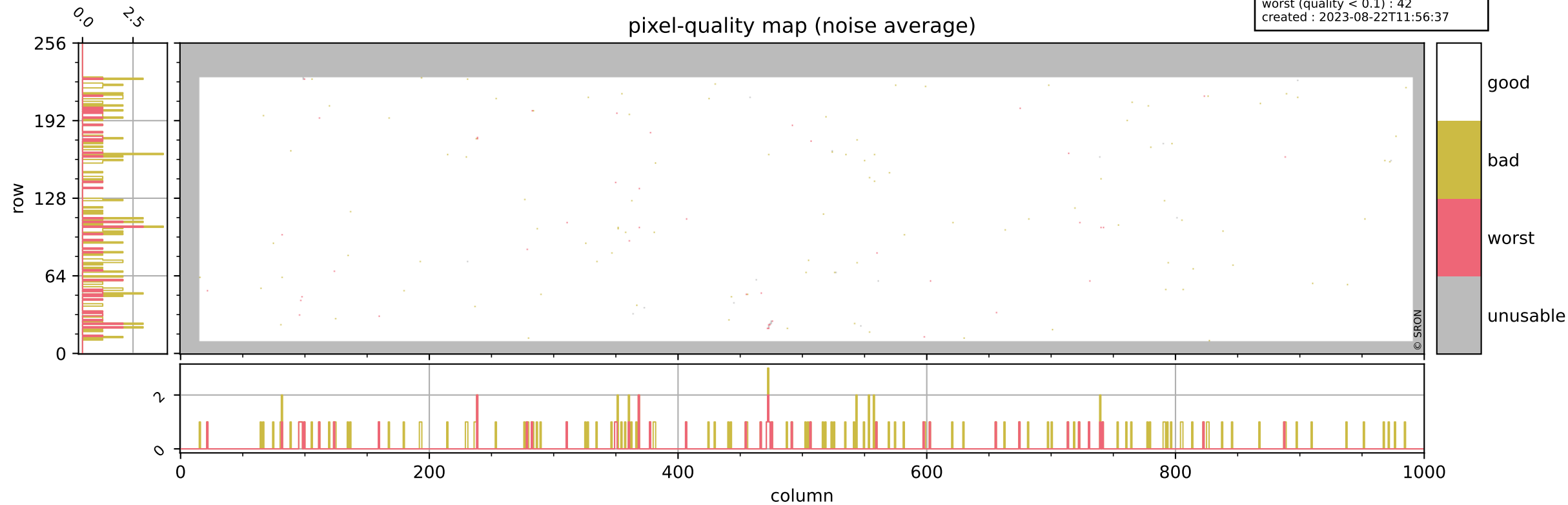
Tropomi SWIR pixel quality (beta nominal)

orbits : 20 in [8452, 8497]
coverage : 2019-06-01 / 2019-06-04
bad (quality < 0.8) : 289
worst (quality < 0.1) : 119
created : 2023-08-22T11:56:37



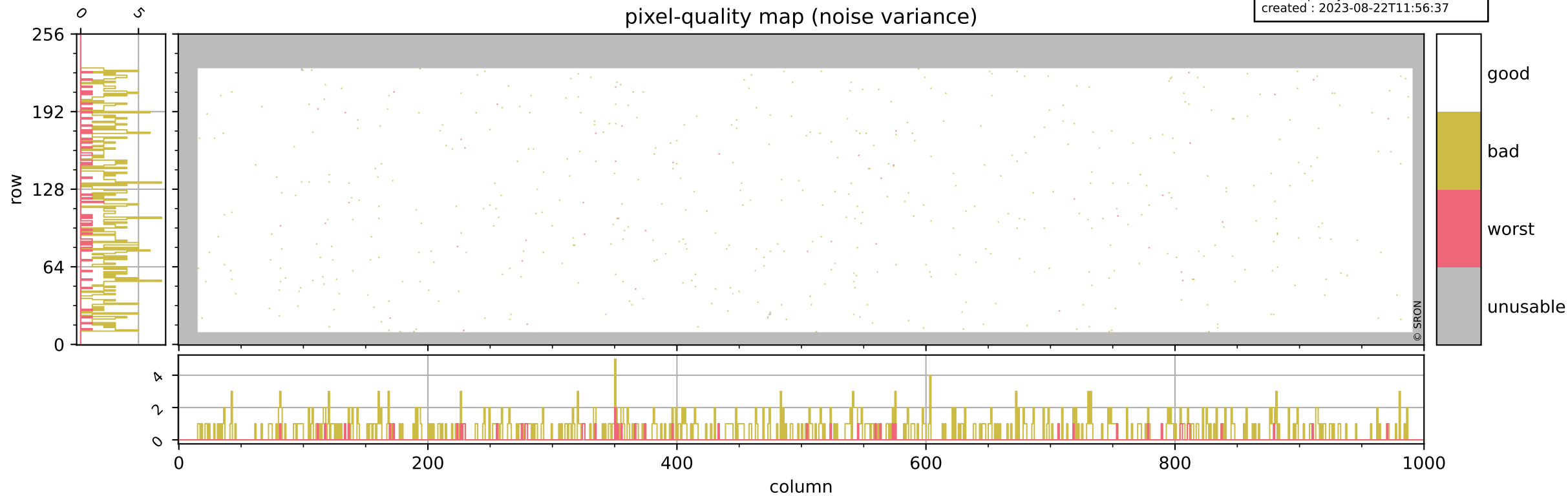
Tropomi SWIR pixel quality (beta nominal)

orbits : 20 in [8452, 8497]
coverage : 2019-06-01 / 2019-06-04
bad (quality < 0.8) : 142
worst (quality < 0.1) : 42
created : 2023-08-22T11:56:37



Tropomi SWIR pixel quality (beta nominal)

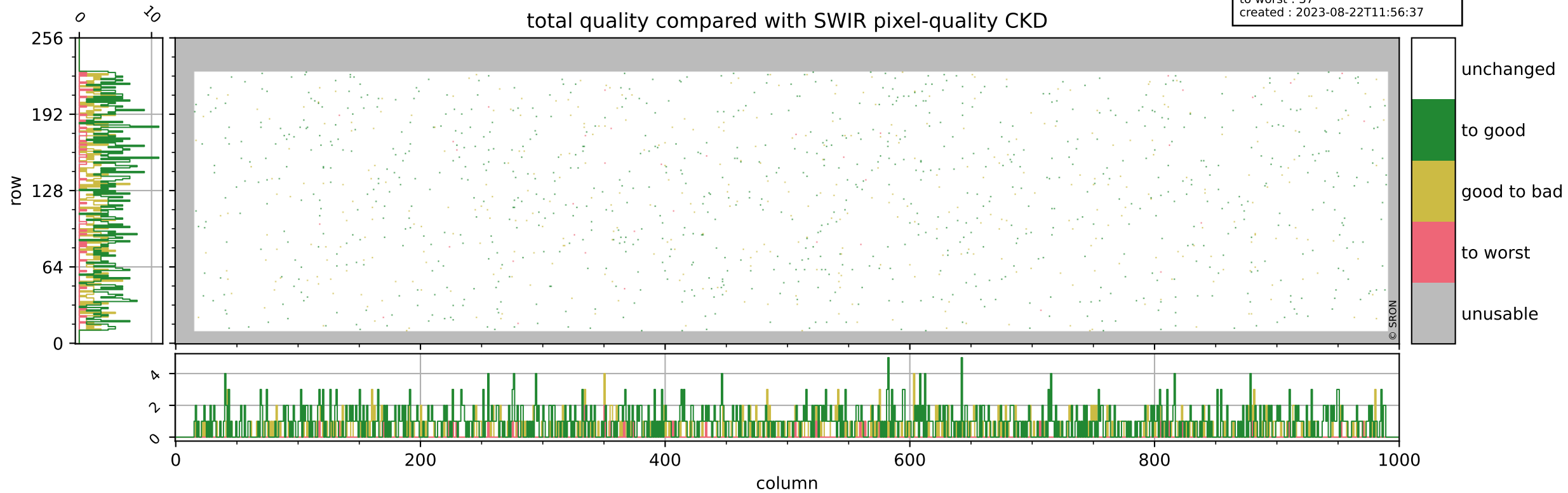
orbits : 20 in [8452, 8497]
coverage : 2019-06-01 / 2019-06-04
bad (quality < 0.8) : 515
worst (quality < 0.1) : 46
created : 2023-08-22T11:56:37



Tropomi SWIR pixel quality (beta nominal)

orbits : 20 in [8452, 8497]
coverage : 2019-06-01 / 2019-06-04
to good : 870
good to bad : 399
to worst : 37
created : 2023-08-22T11:56:37

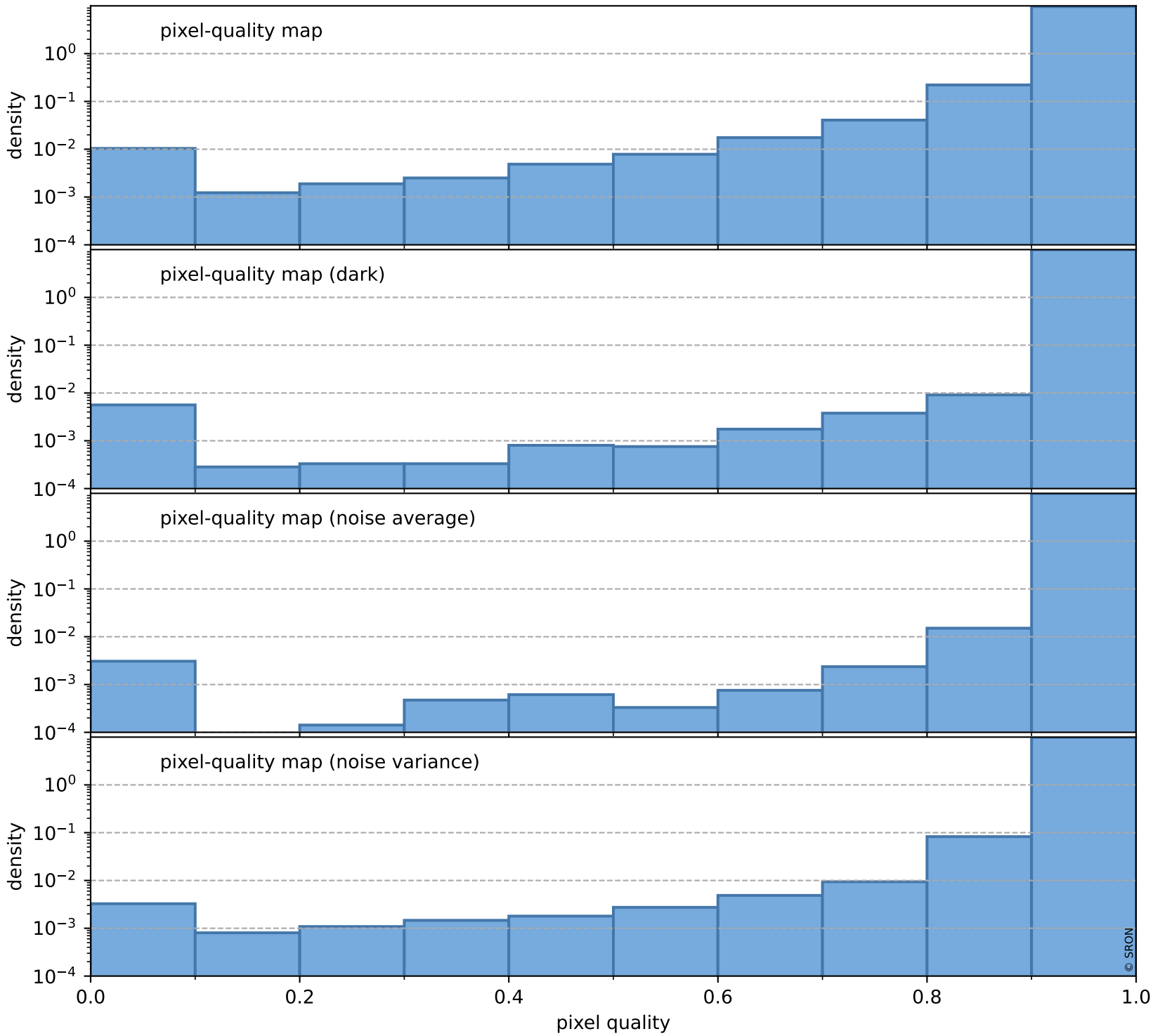
total quality compared with SWIR pixel-quality CKD



Tropomi SWIR pixel quality (beta nominal)

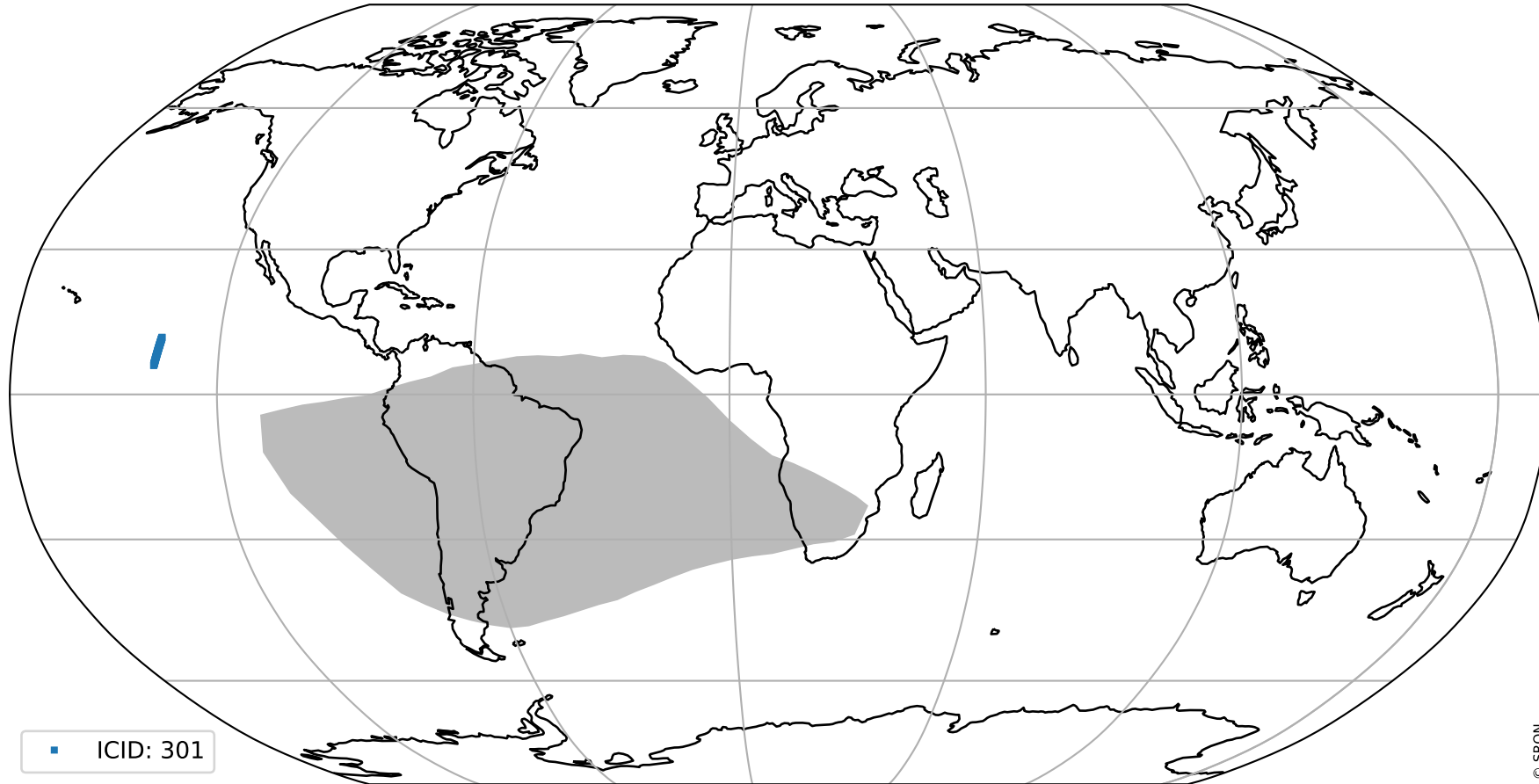
orbits : 20 in [8452, 8497]
coverage : 2019-06-01 / 2019-06-04
created : 2023-08-22T11:56:38

Histograms of pixel-quality



Tropomi SWIR pixel quality (beta nominal) ground-tracks of Sentinel-5P

orbits : 20 in [8452, 8497]
coverage : 2019-06-01 / 2019-06-04
created : 2023-08-22T11:56:38



Tropomi SWIR pixel quality (beta nominal)

orbits : [1867, 8497]
coverage : 2018-02-20 / 2019-06-04
created : 2023-08-22T11:56:38

trend of pixel quality & temperatures

