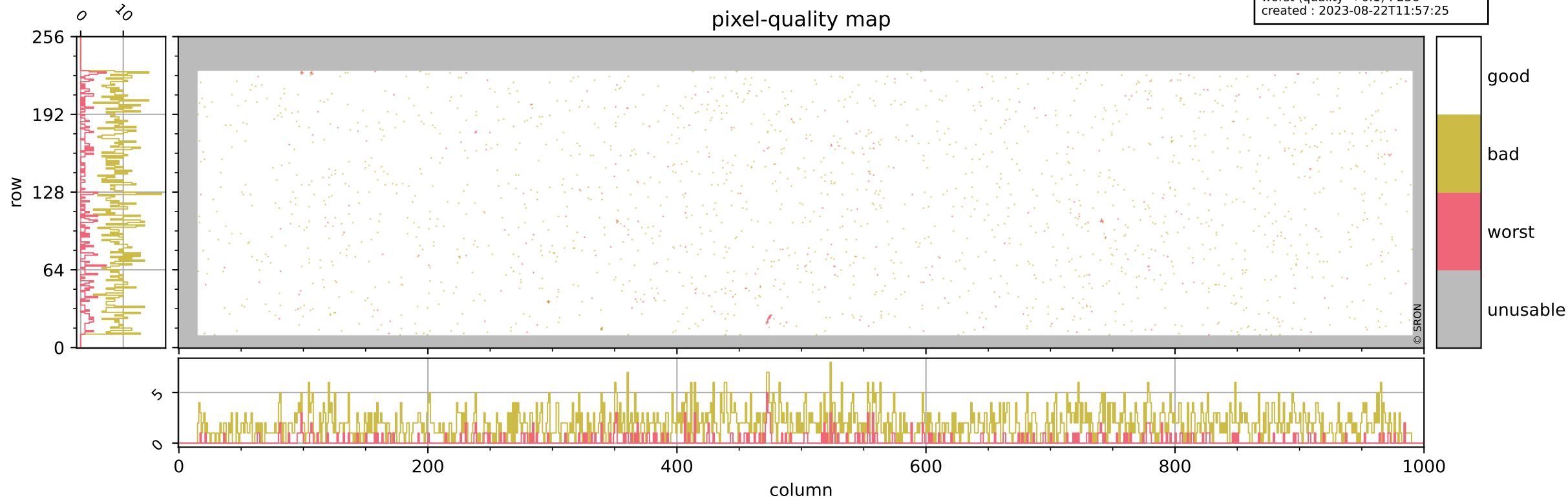


# Tropomi SWIR pixel quality (beta nominal)

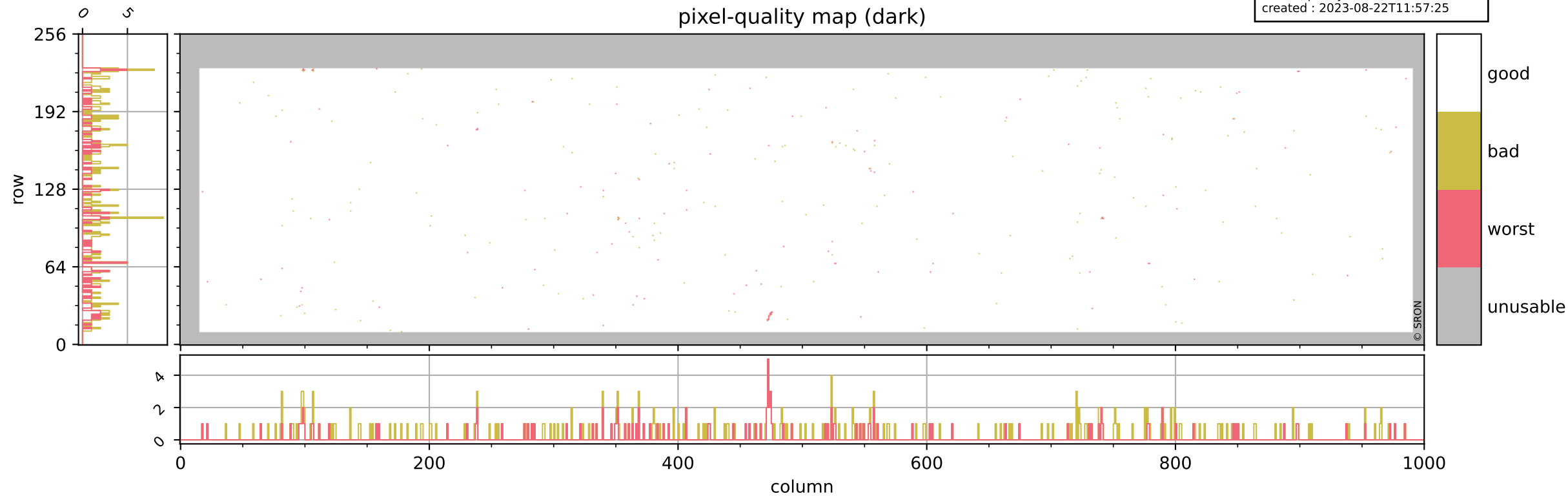
orbits : 20 in [9262, 9307]  
coverage : 2019-07-28 / 2019-07-31  
bad (quality < 0.8) : 1903  
worst (quality < 0.1) : 236  
created : 2023-08-22T11:57:25

## pixel-quality map



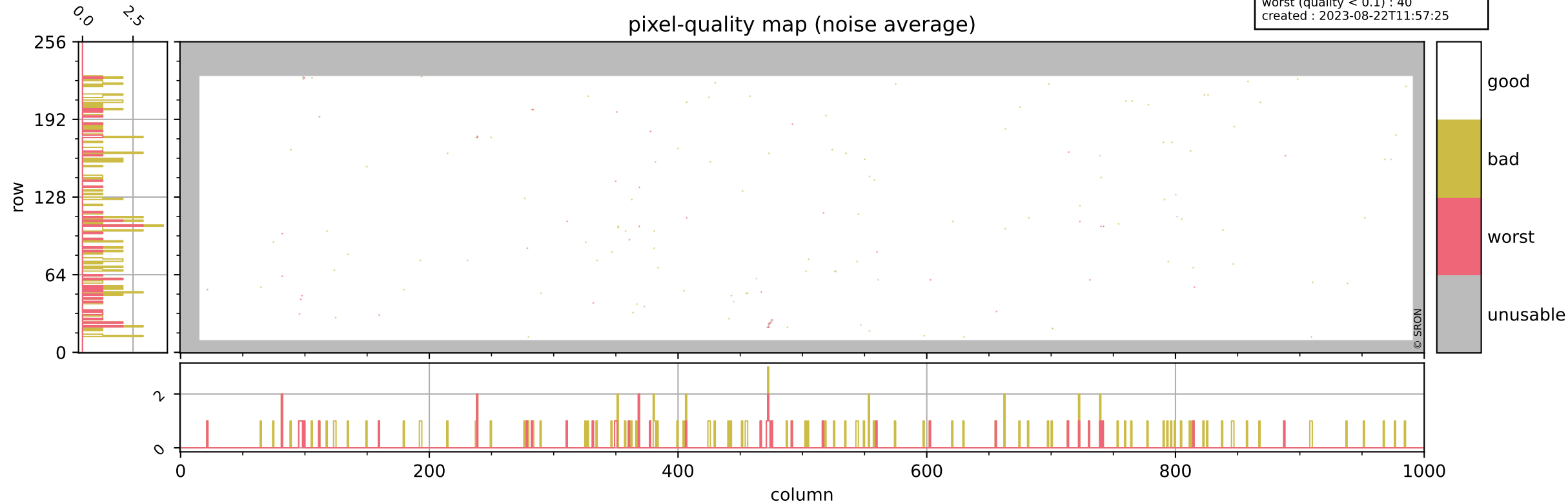
# Tropomi SWIR pixel quality (beta nominal)

orbits : 20 in [9262, 9307]  
coverage : 2019-07-28 / 2019-07-31  
bad (quality < 0.8) : 294  
worst (quality < 0.1) : 117  
created : 2023-08-22T11:57:25



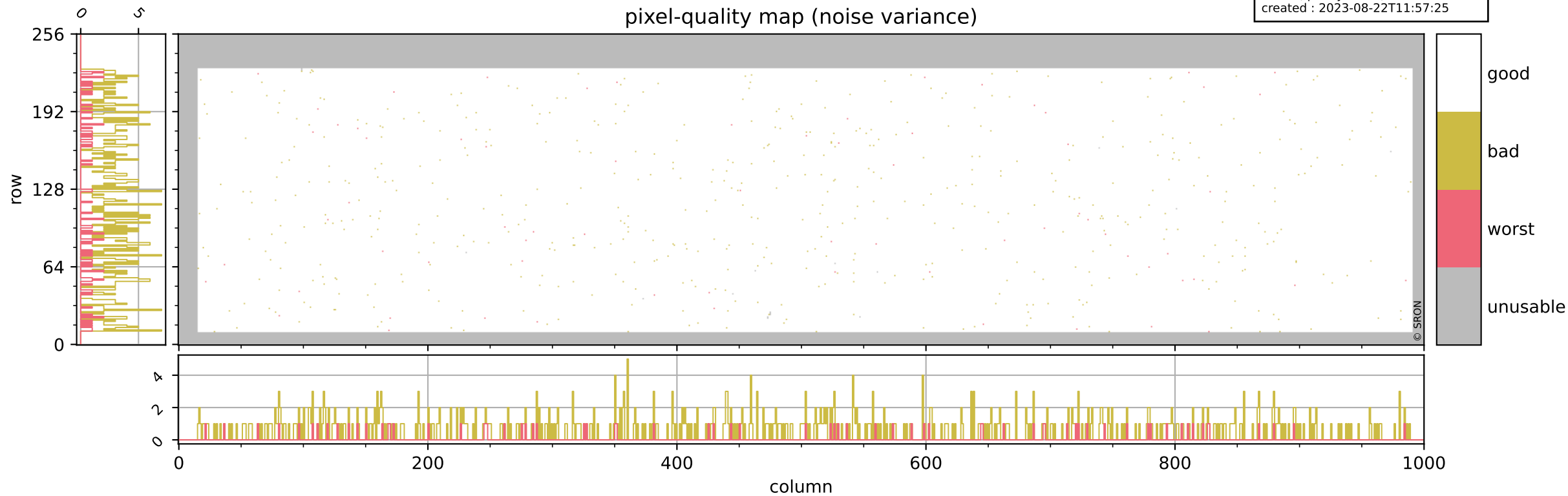
# Tropomi SWIR pixel quality (beta nominal)

orbits : 20 in [9262, 9307]  
coverage : 2019-07-28 / 2019-07-31  
bad (quality < 0.8) : 134  
worst (quality < 0.1) : 40  
created : 2023-08-22T11:57:25



# Tropomi SWIR pixel quality (beta nominal)

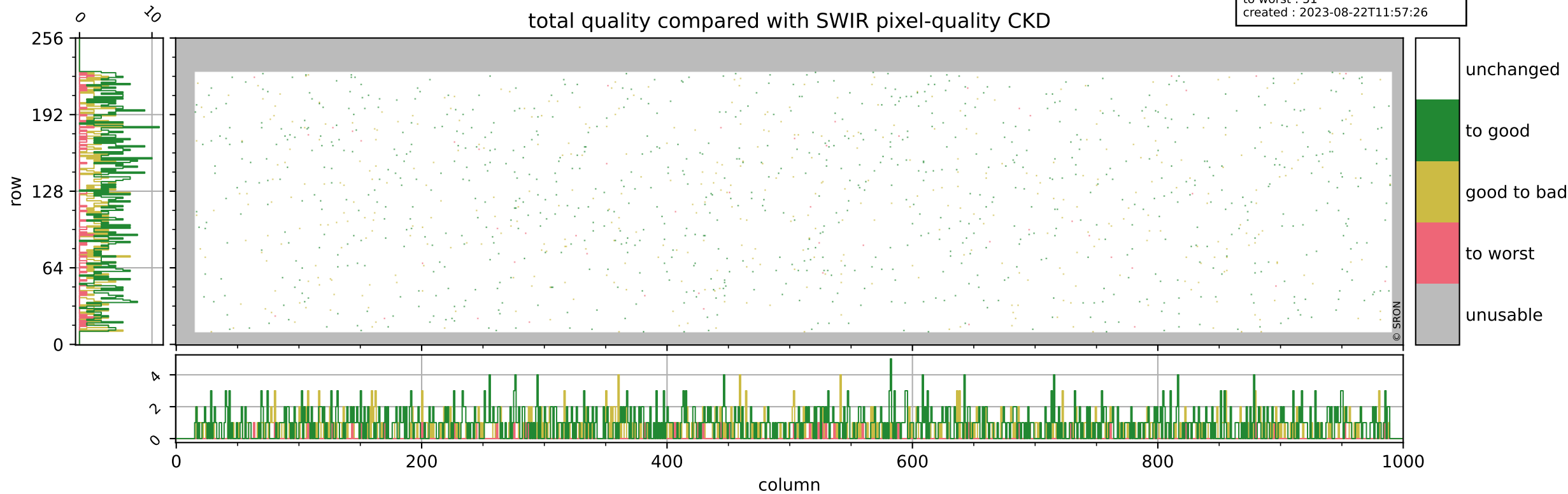
orbits : 20 in [9262, 9307]  
coverage : 2019-07-28 / 2019-07-31  
bad (quality < 0.8) : 588  
worst (quality < 0.1) : 70  
created : 2023-08-22T11:57:25



# Tropomi SWIR pixel quality (beta nominal)

orbits : 20 in [9262, 9307]  
coverage : 2019-07-28 / 2019-07-31  
to good : 862  
good to bad : 439  
to worst : 51  
created : 2023-08-22T11:57:26

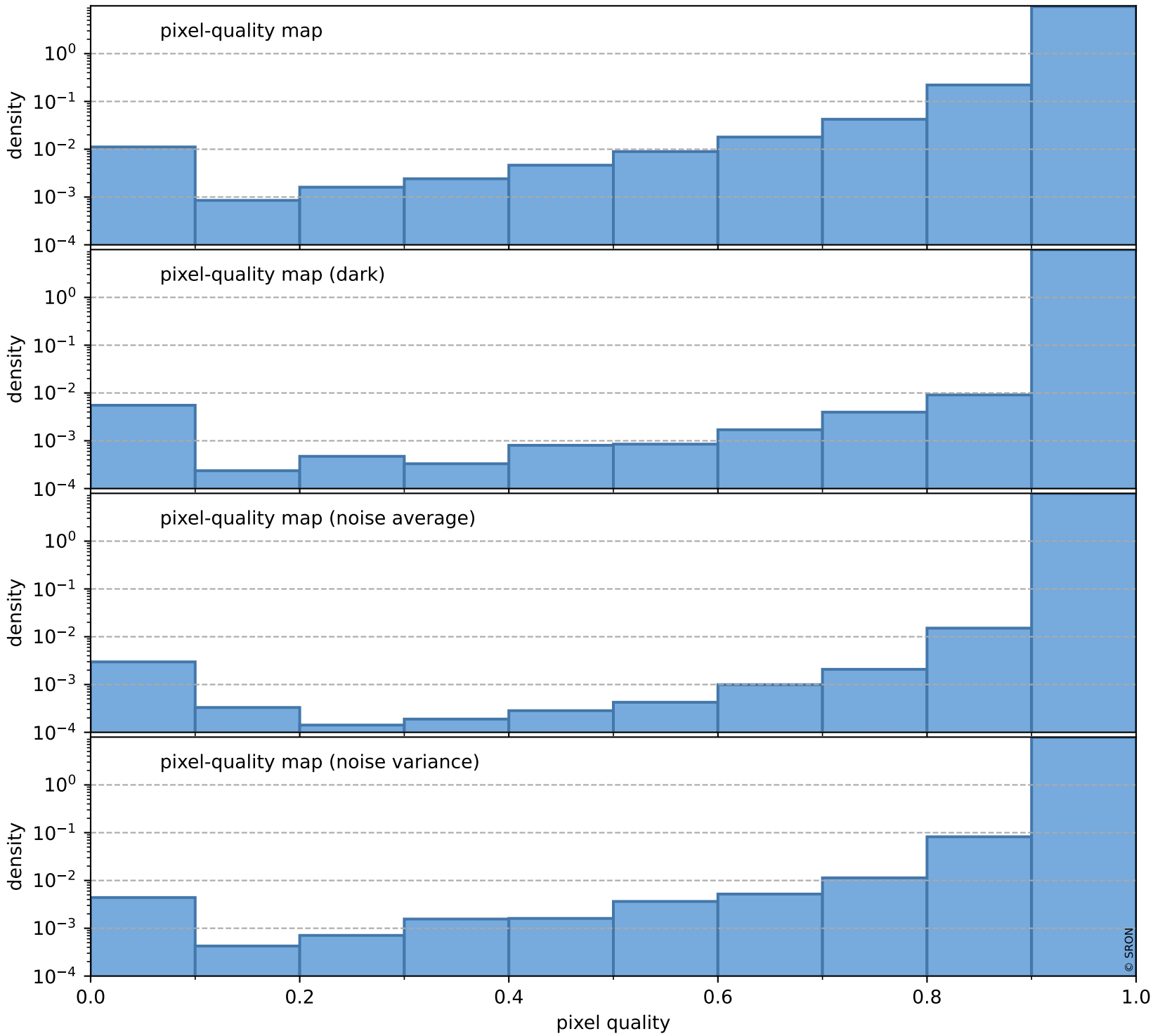
## total quality compared with SWIR pixel-quality CKD



# Tropomi SWIR pixel quality (beta nominal)

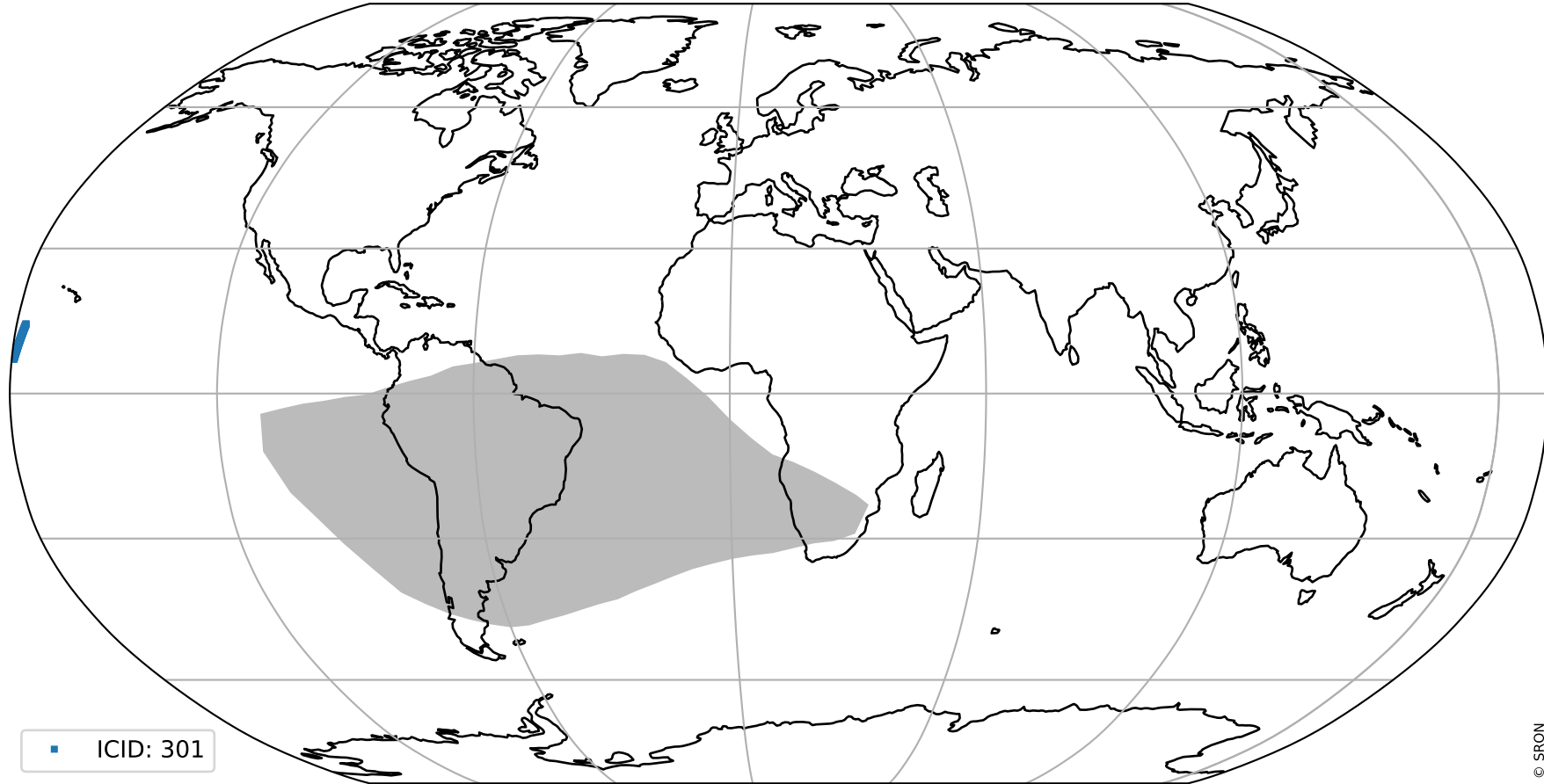
orbits : 20 in [9262, 9307]  
coverage : 2019-07-28 / 2019-07-31  
created : 2023-08-22T11:57:26

## Histograms of pixel-quality



# Tropomi SWIR pixel quality (beta nominal) ground-tracks of Sentinel-5P

orbits : 20 in [9262, 9307]  
coverage : 2019-07-28 / 2019-07-31  
created : 2023-08-22T11:57:26



■ ICID: 301

# Tropomi SWIR pixel quality (beta nominal)

orbits : [1867, 9307]  
coverage : 2018-02-20 / 2019-07-31  
created : 2023-08-22T11:57:27

## trend of pixel quality & temperatures

