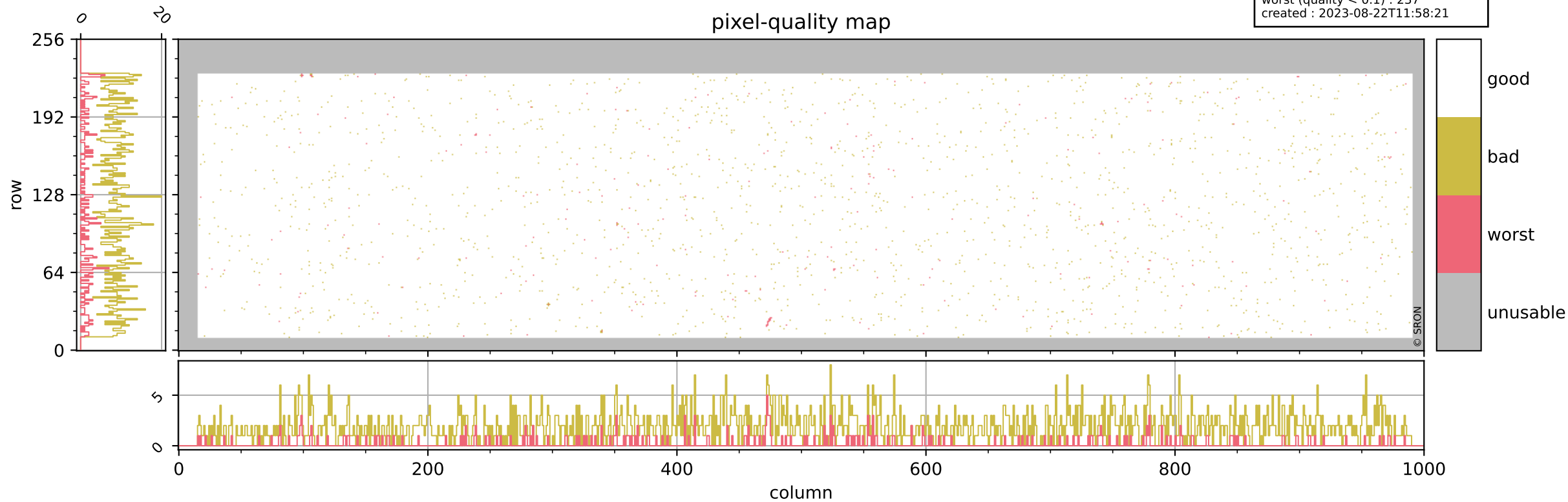


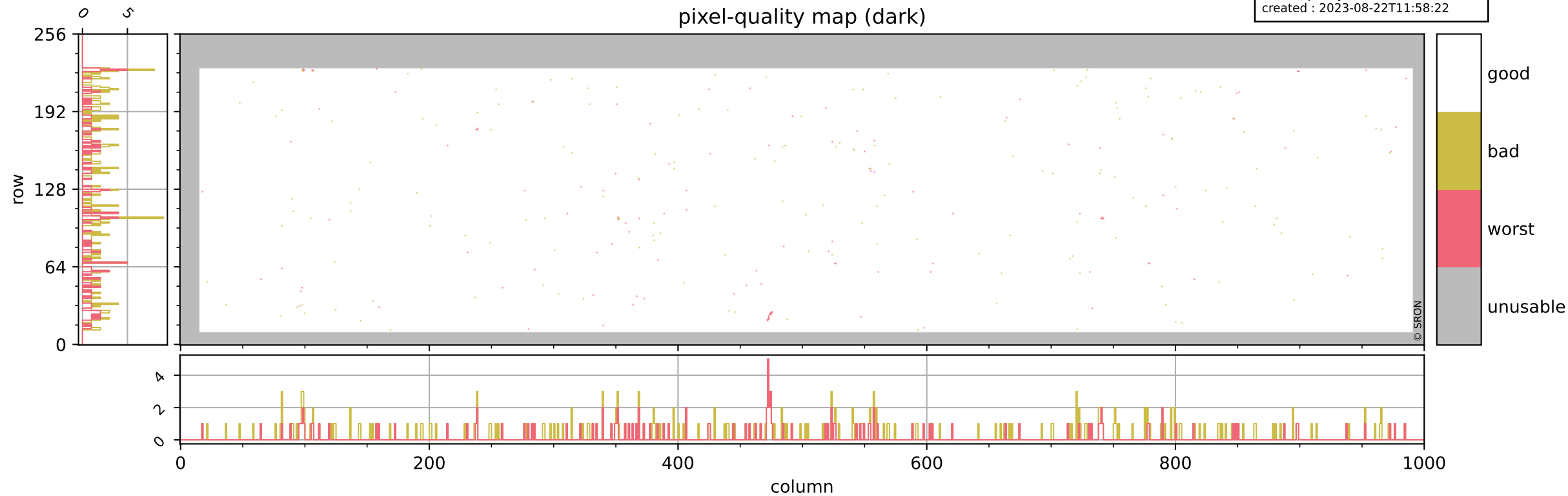
Tropomi SWIR pixel quality (beta nominal)

orbits : 18 in [10207, 10252]
coverage : 2019-10-03 / 2019-10-06
bad (quality < 0.8) : 1922
worst (quality < 0.1) : 237
created : 2023-08-22T11:58:21



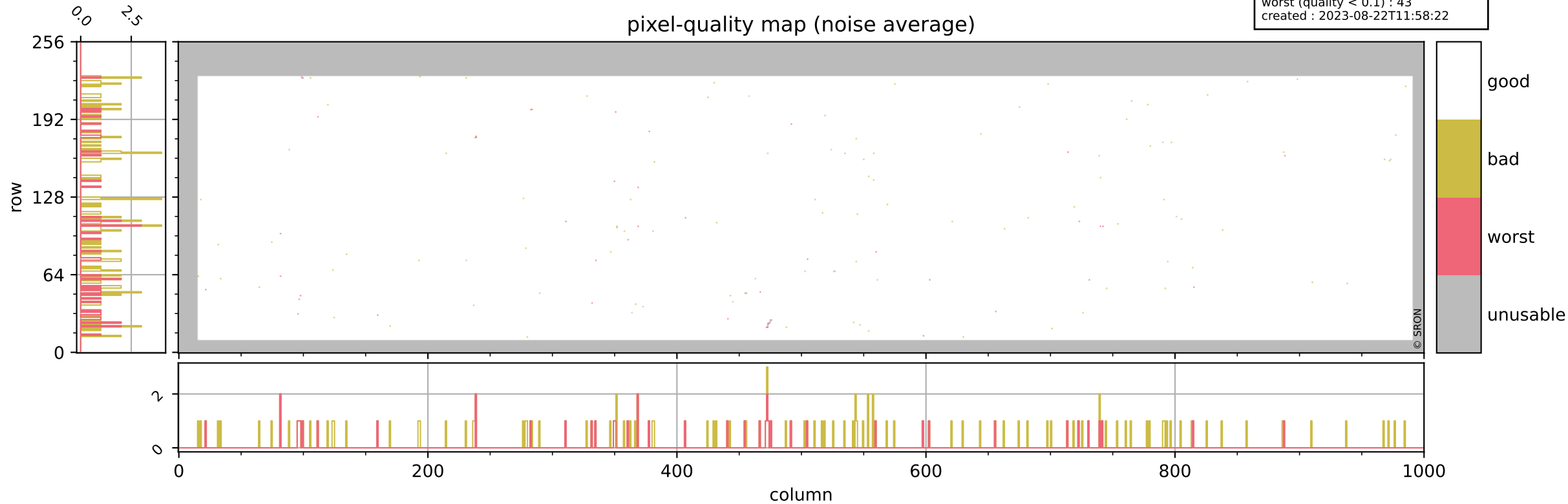
Tropomi SWIR pixel quality (beta nominal)

orbits : 18 in [10207, 10252]
coverage : 2019-10-03 / 2019-10-06
bad (quality < 0.8) : 289
worst (quality < 0.1) : 120
created : 2023-08-22T11:58:22



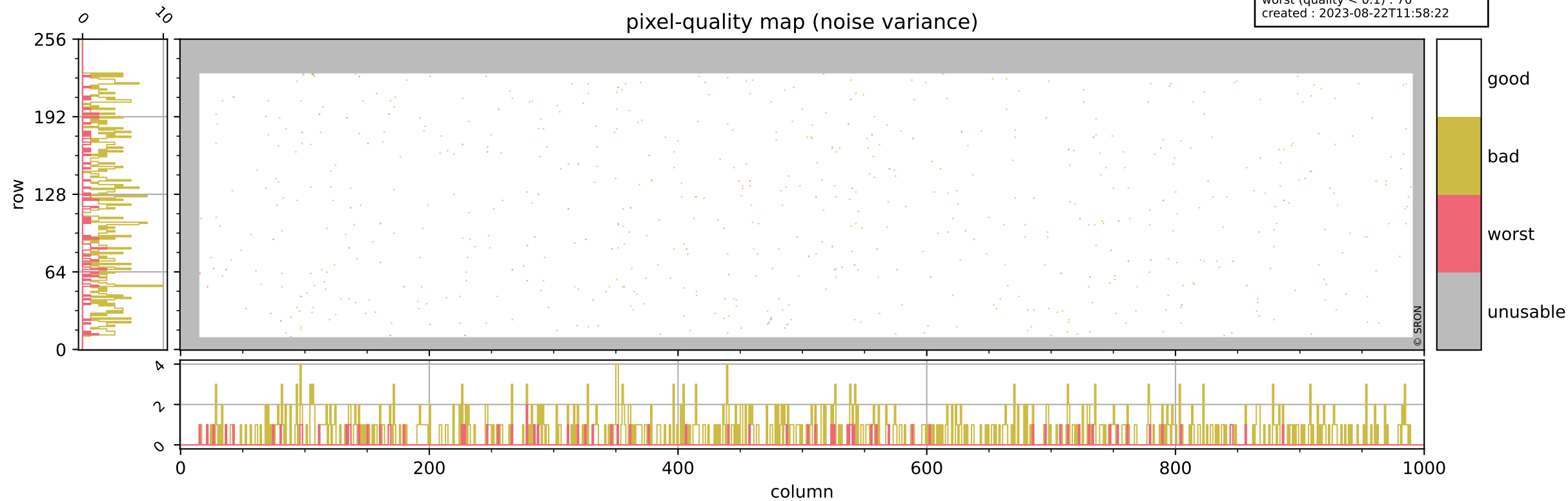
Tropomi SWIR pixel quality (beta nominal)

orbits : 18 in [10207, 10252]
coverage : 2019-10-03 / 2019-10-06
bad (quality < 0.8) : 133
worst (quality < 0.1) : 43
created : 2023-08-22T11:58:22



Tropomi SWIR pixel quality (beta nominal)

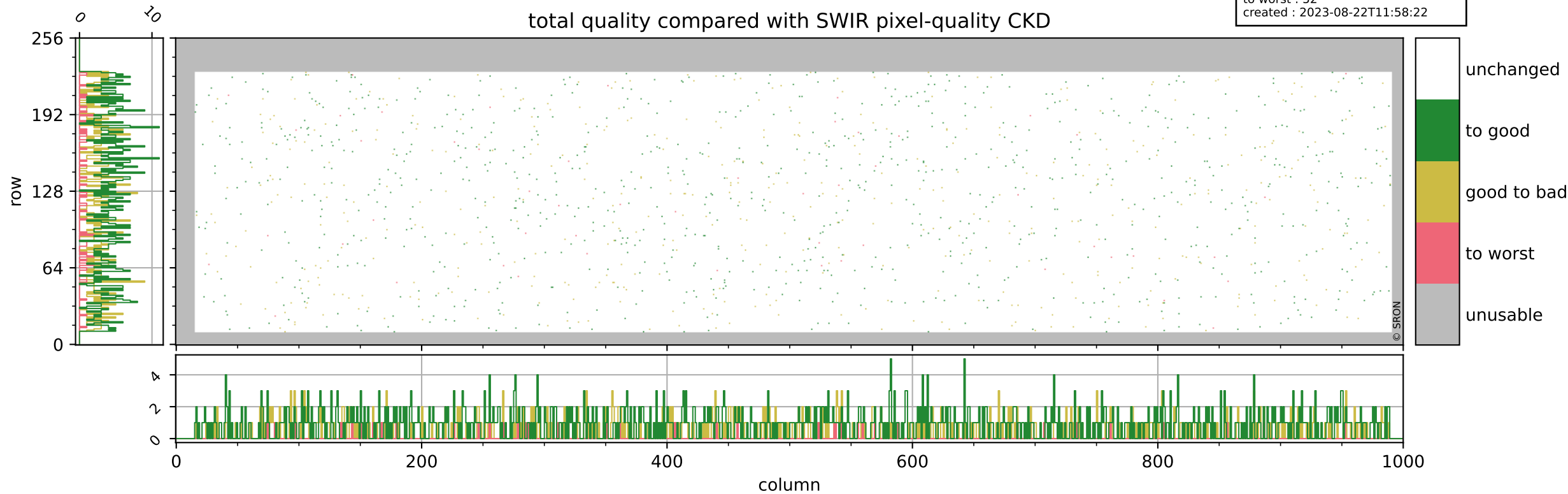
orbits : 18 in [10207, 10252]
coverage : 2019-10-03 / 2019-10-06
bad (quality < 0.8) : 606
worst (quality < 0.1) : 70
created : 2023-08-22T11:58:22



Tropomi SWIR pixel quality (beta nominal)

orbits : 18 in [10207, 10252]
coverage : 2019-10-03 / 2019-10-06
to good : 873
good to bad : 469
to worst : 52
created : 2023-08-22T11:58:22

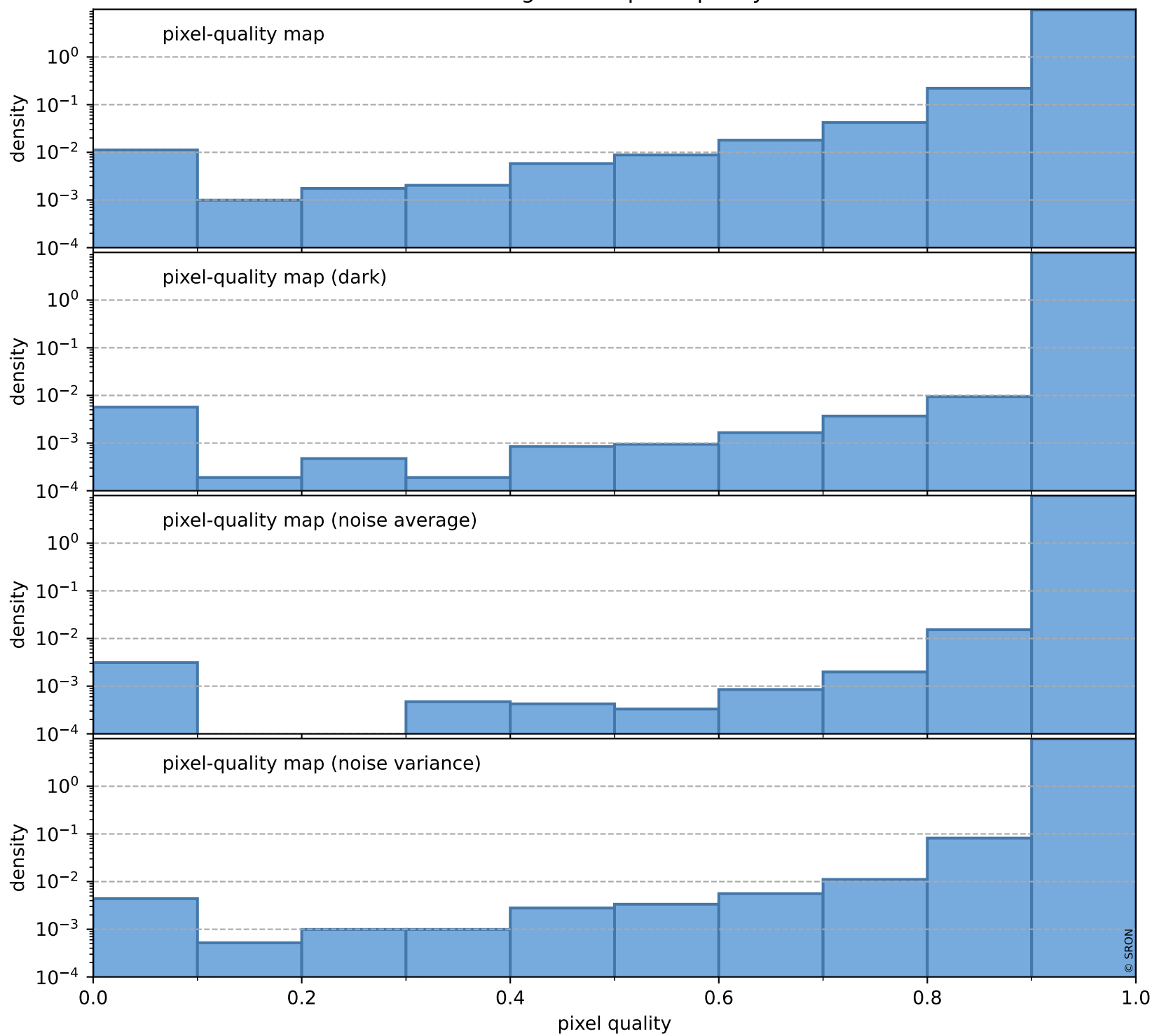
total quality compared with SWIR pixel-quality CKD



Tropomi SWIR pixel quality (beta nominal)

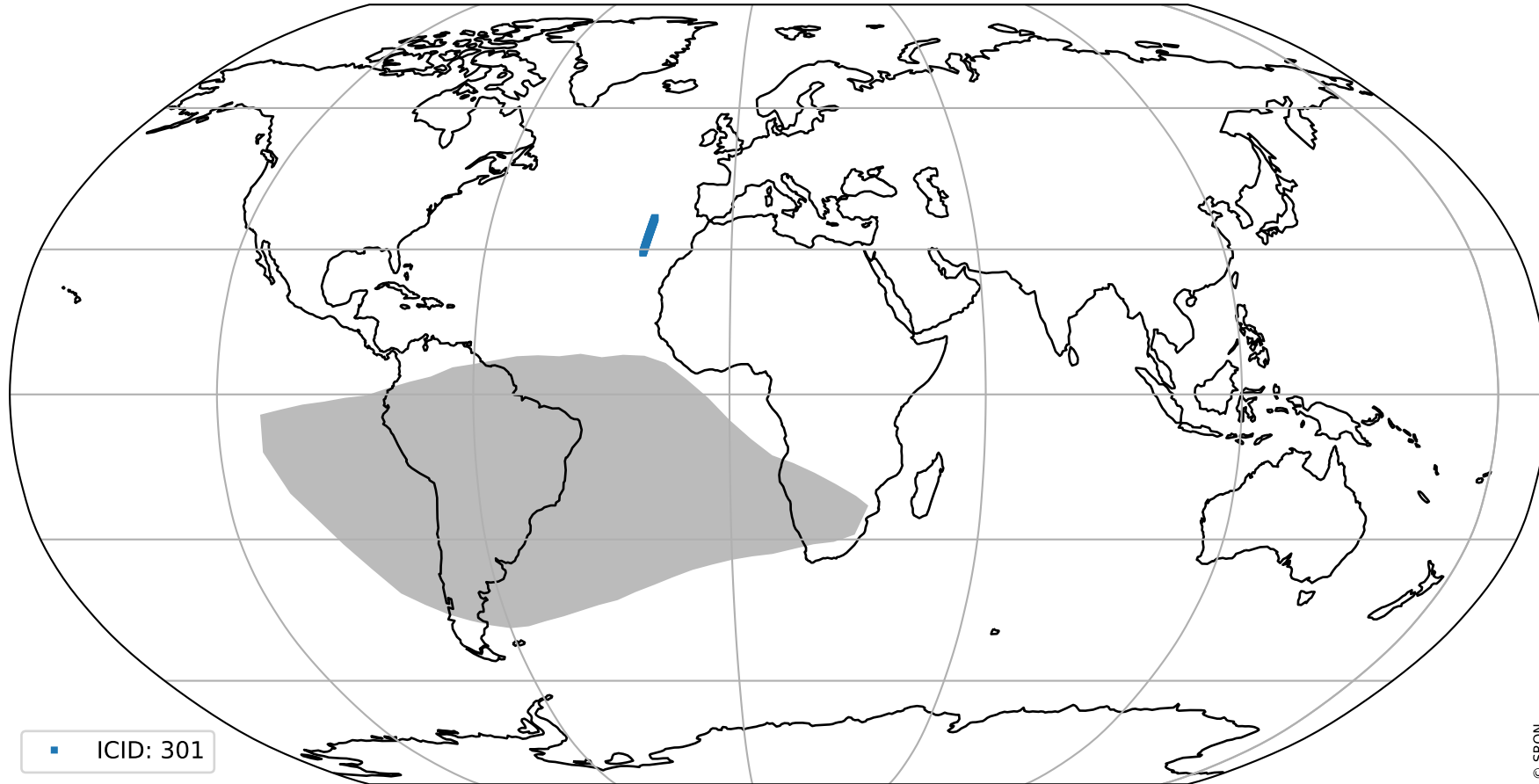
orbits : 18 in [10207, 10252]
coverage : 2019-10-03 / 2019-10-06
created : 2023-08-22T11:58:23

Histograms of pixel-quality



Tropomi SWIR pixel quality (beta nominal) ground-tracks of Sentinel-5P

orbits : 18 in [10207, 10252]
coverage : 2019-10-03 / 2019-10-06
created : 2023-08-22T11:58:23



Tropomi SWIR pixel quality (beta nominal)

orbits : [1867, 10252]
coverage : 2018-02-20 / 2019-10-06
created : 2023-08-22T11:58:23

trend of pixel quality & temperatures

