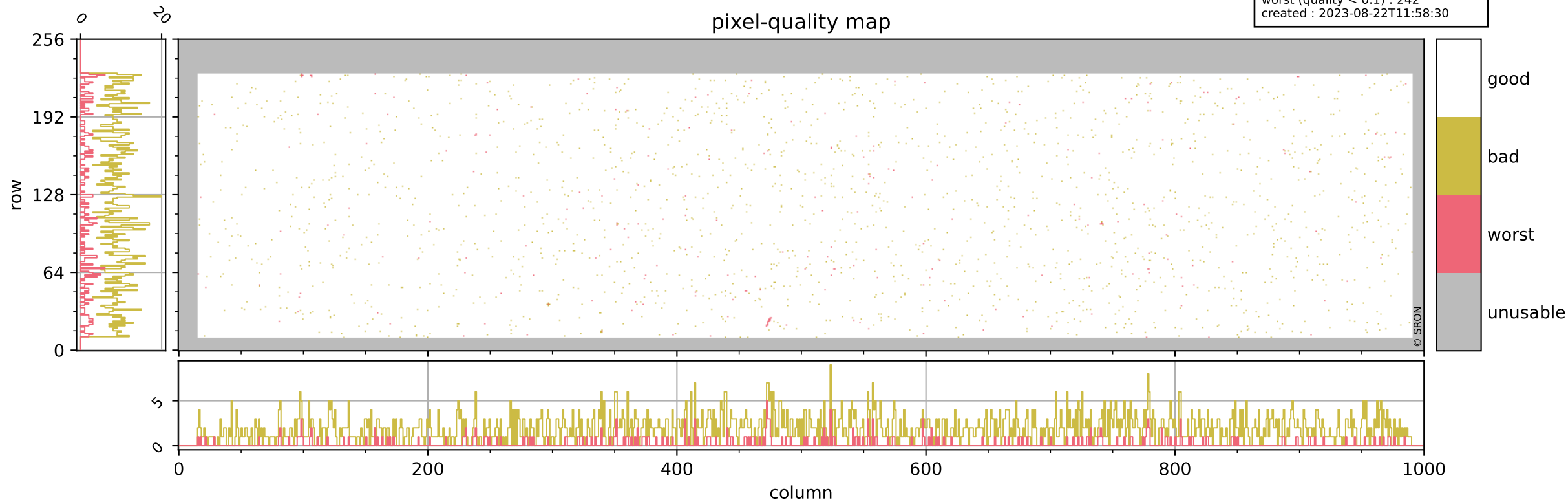


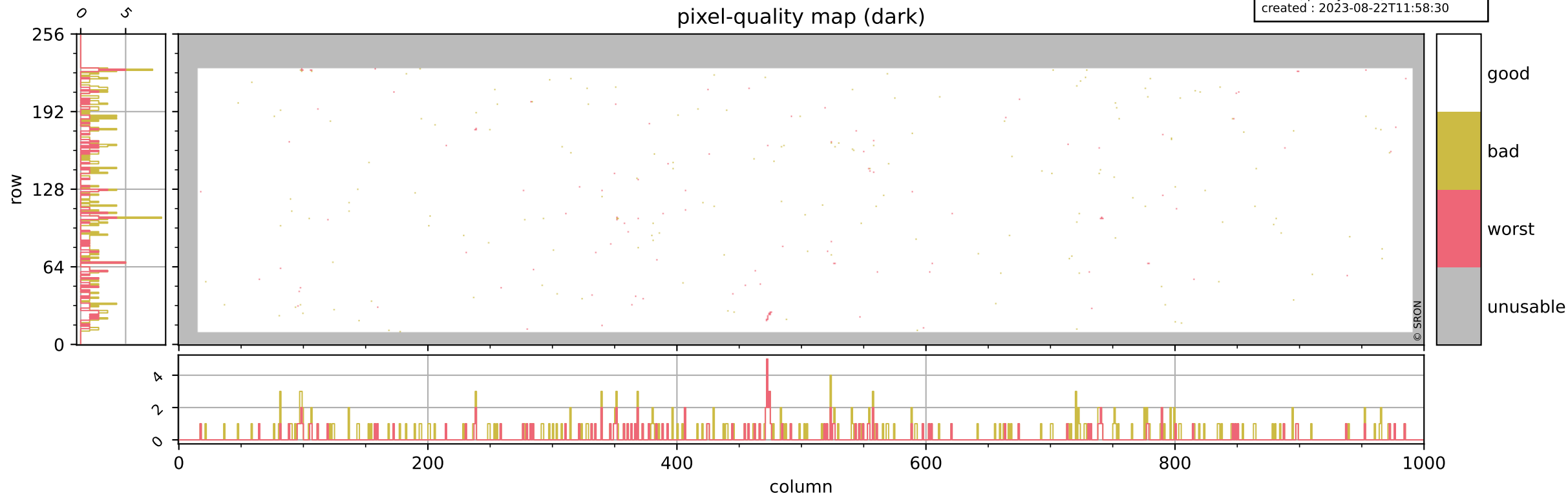
Tropomi SWIR pixel quality (beta nominal)

orbits : 20 in [10342, 10387]
coverage : 2019-10-12 / 2019-10-15
bad (quality < 0.8) : 1949
worst (quality < 0.1) : 242
created : 2023-08-22T11:58:30



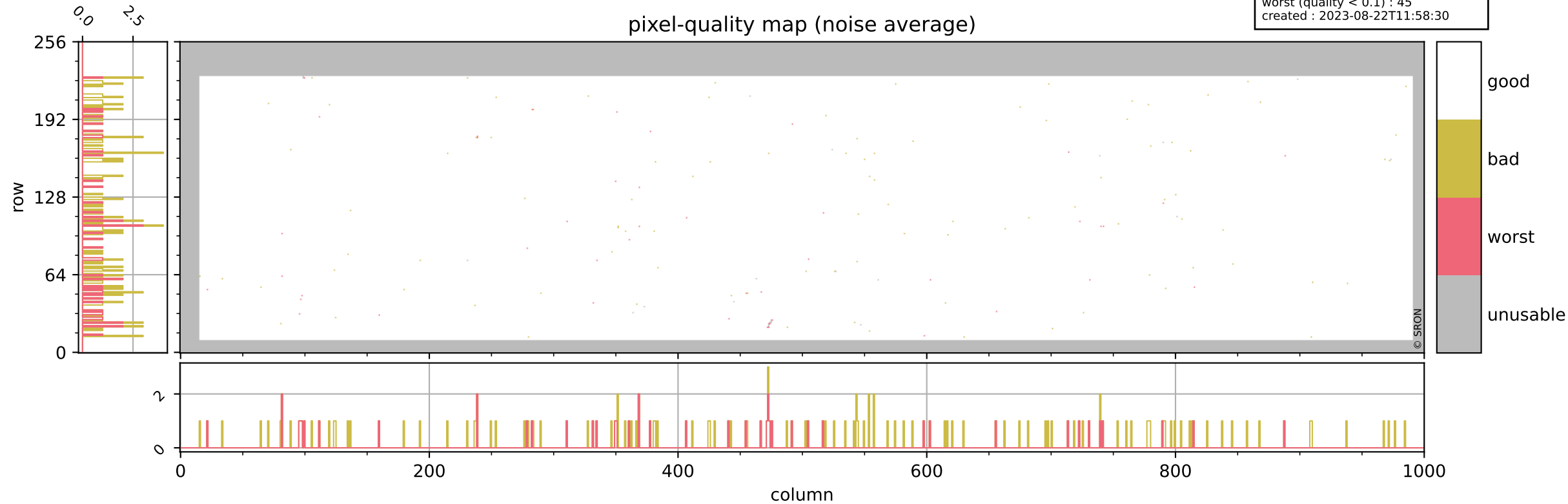
Tropomi SWIR pixel quality (beta nominal)

orbits : 20 in [10342, 10387]
coverage : 2019-10-12 / 2019-10-15
bad (quality < 0.8) : 289
worst (quality < 0.1) : 119
created : 2023-08-22T11:58:30



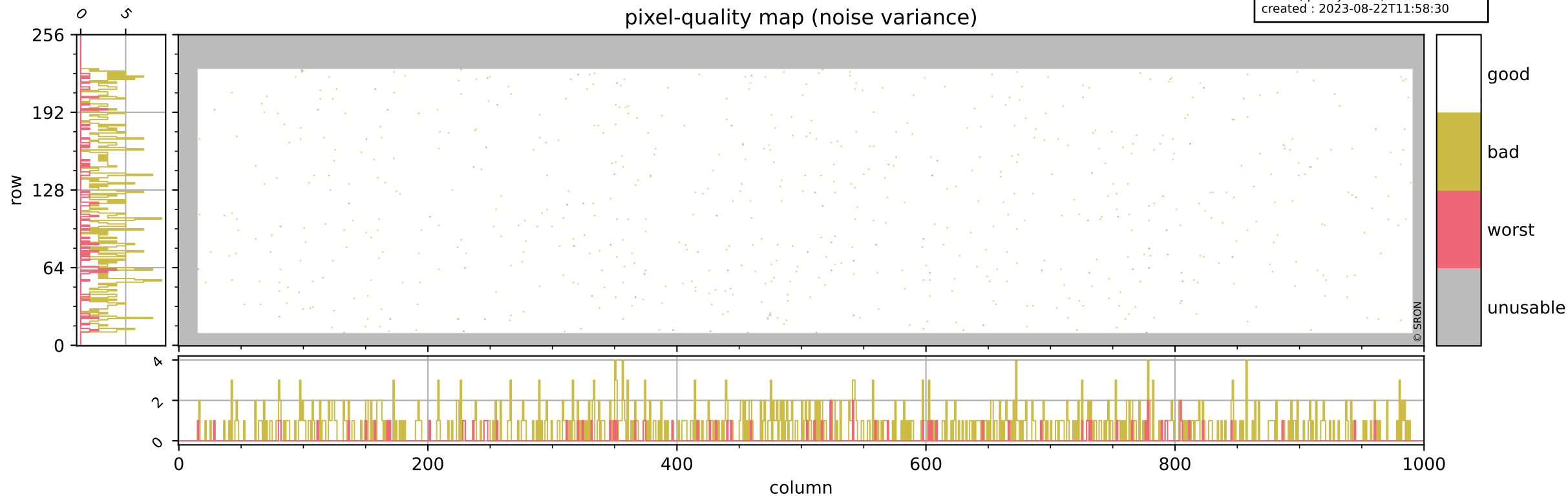
Tropomi SWIR pixel quality (beta nominal)

orbits : 20 in [10342, 10387]
coverage : 2019-10-12 / 2019-10-15
bad (quality < 0.8) : 142
worst (quality < 0.1) : 45
created : 2023-08-22T11:58:30



Tropomi SWIR pixel quality (beta nominal)

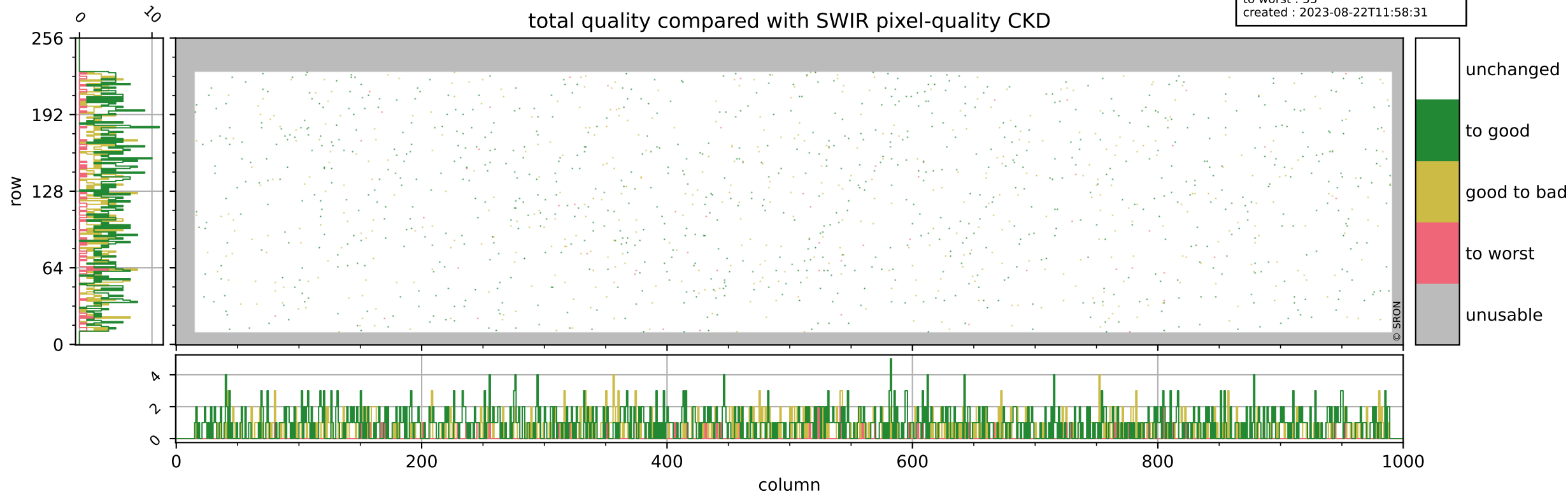
orbits : 20 in [10342, 10387]
coverage : 2019-10-12 / 2019-10-15
bad (quality < 0.8) : 632
worst (quality < 0.1) : 72
created : 2023-08-22T11:58:30



Tropomi SWIR pixel quality (beta nominal)

orbits : 20 in [10342, 10387]
coverage : 2019-10-12 / 2019-10-15
to good : 859
good to bad : 484
to worst : 55
created : 2023-08-22T11:58:31

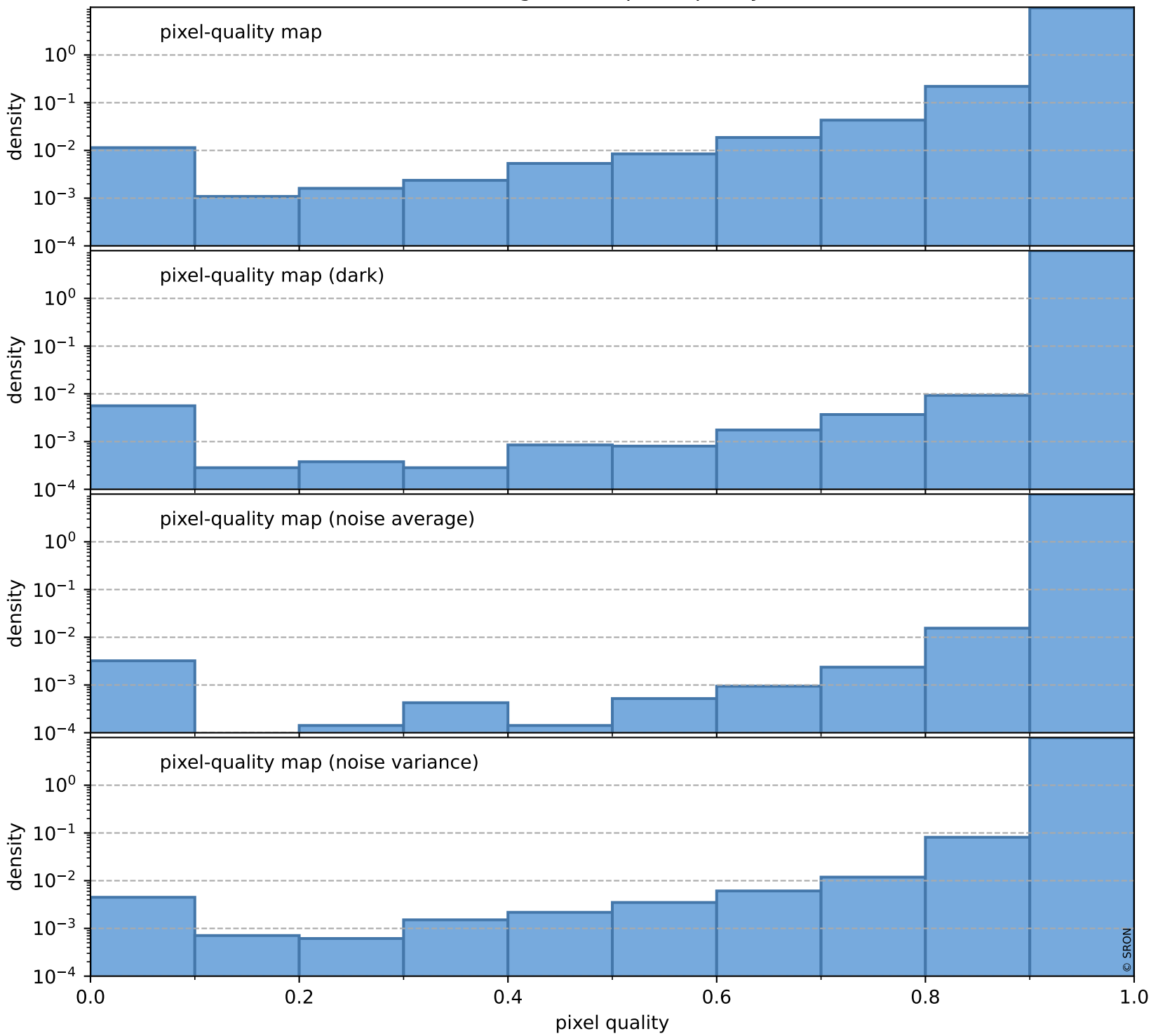
total quality compared with SWIR pixel-quality CKD



Tropomi SWIR pixel quality (beta nominal)

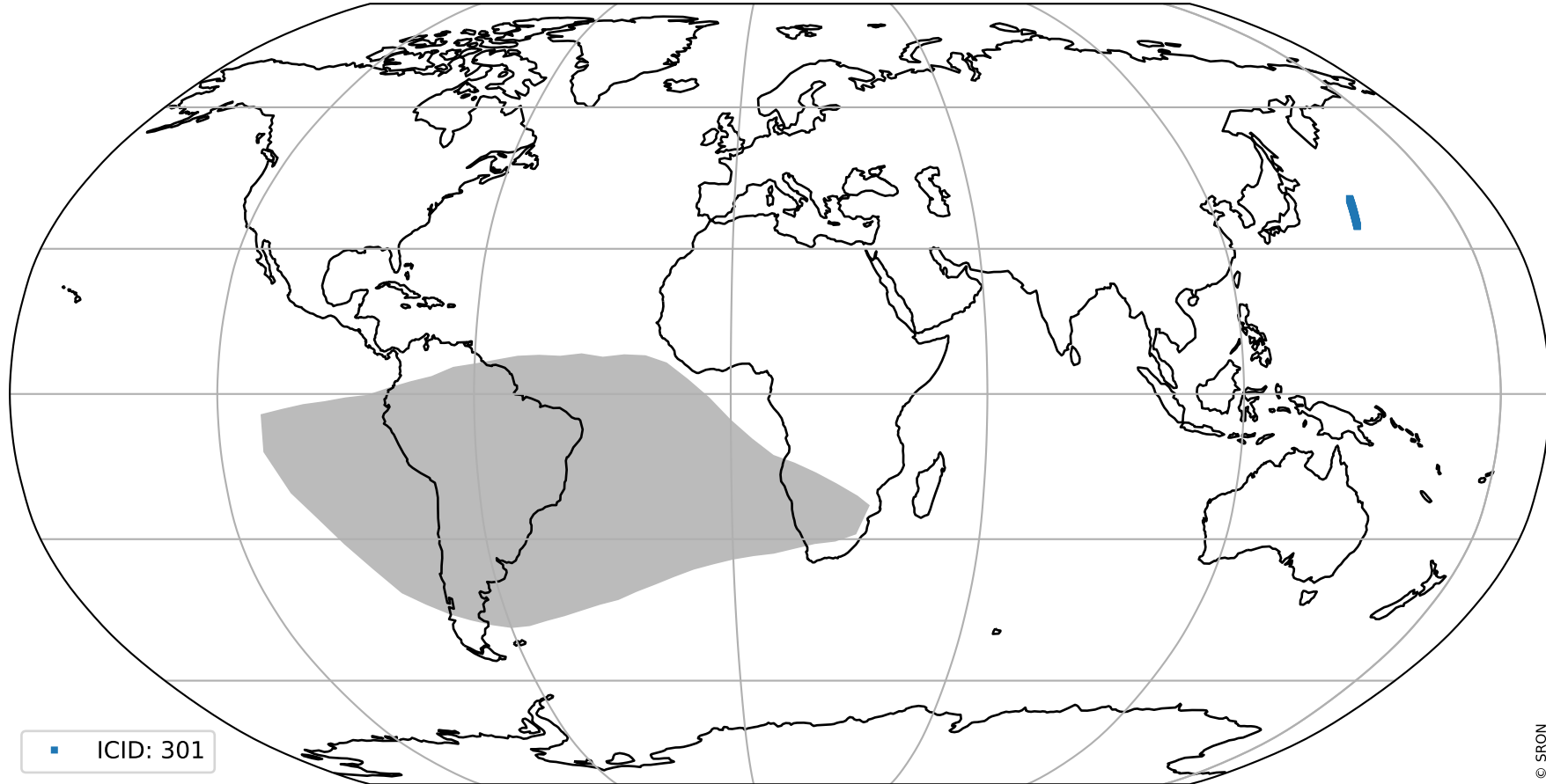
orbits : 20 in [10342, 10387]
coverage : 2019-10-12 / 2019-10-15
created : 2023-08-22T11:58:31

Histograms of pixel-quality



Tropomi SWIR pixel quality (beta nominal) ground-tracks of Sentinel-5P

orbits : 20 in [10342, 10387]
coverage : 2019-10-12 / 2019-10-15
created : 2023-08-22T11:58:31



Tropomi SWIR pixel quality (beta nominal)

orbits : [1867, 10387]
coverage : 2018-02-20 / 2019-10-15
created : 2023-08-22T11:58:32

trend of pixel quality & temperatures

