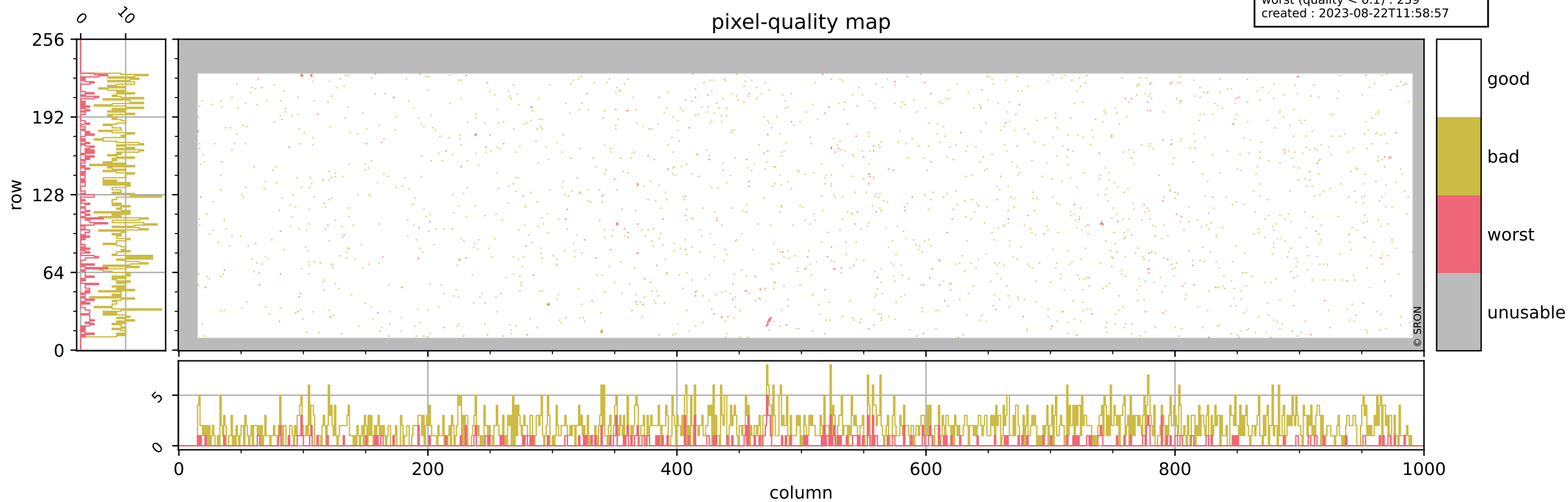


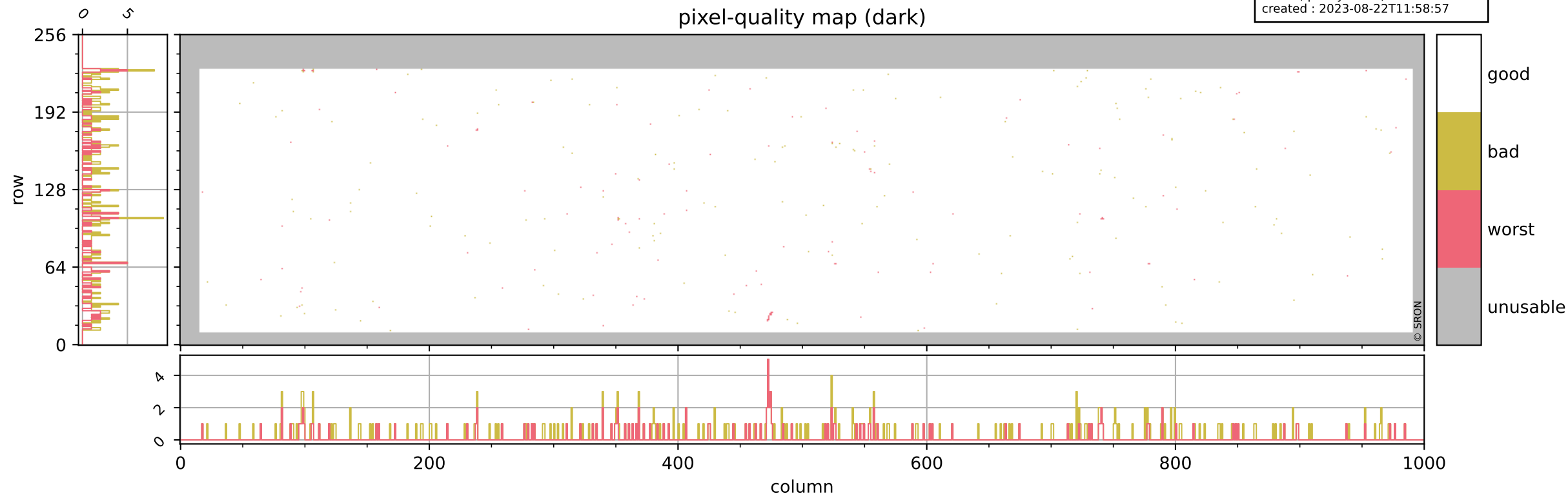
Tropomi SWIR pixel quality (beta nominal)

orbits : 20 in [10792, 10837]
coverage : 2019-11-13 / 2019-11-16
bad (quality < 0.8) : 1931
worst (quality < 0.1) : 239
created : 2023-08-22T11:58:57



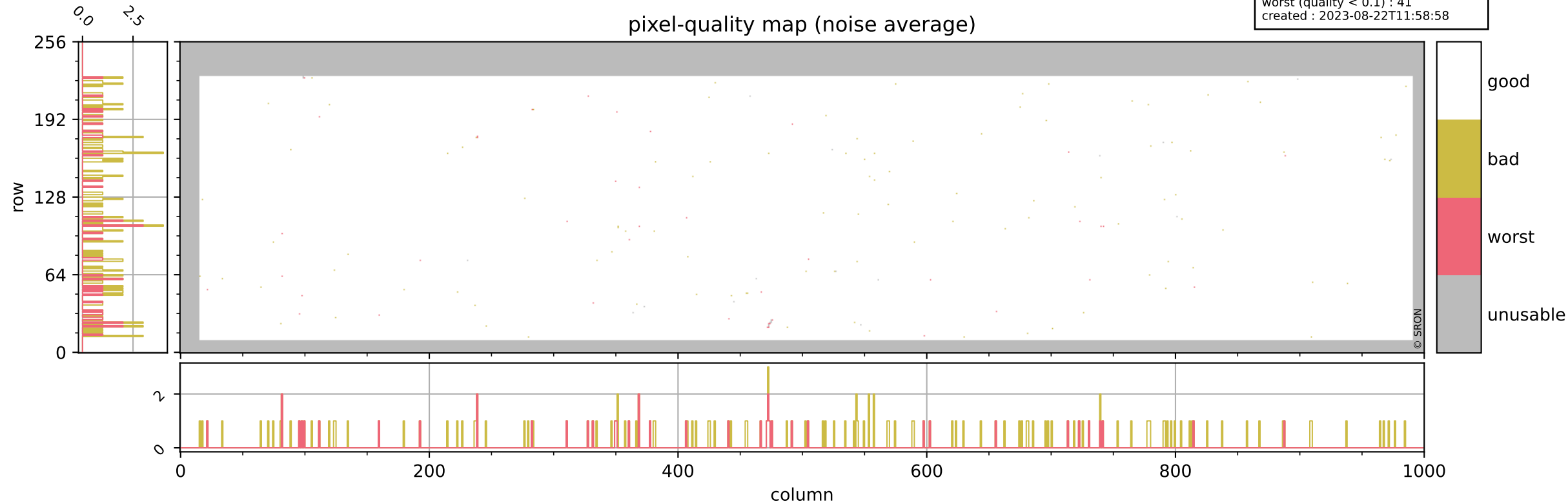
Tropomi SWIR pixel quality (beta nominal)

orbits : 20 in [10792, 10837]
coverage : 2019-11-13 / 2019-11-16
bad (quality < 0.8) : 289
worst (quality < 0.1) : 121
created : 2023-08-22T11:58:57



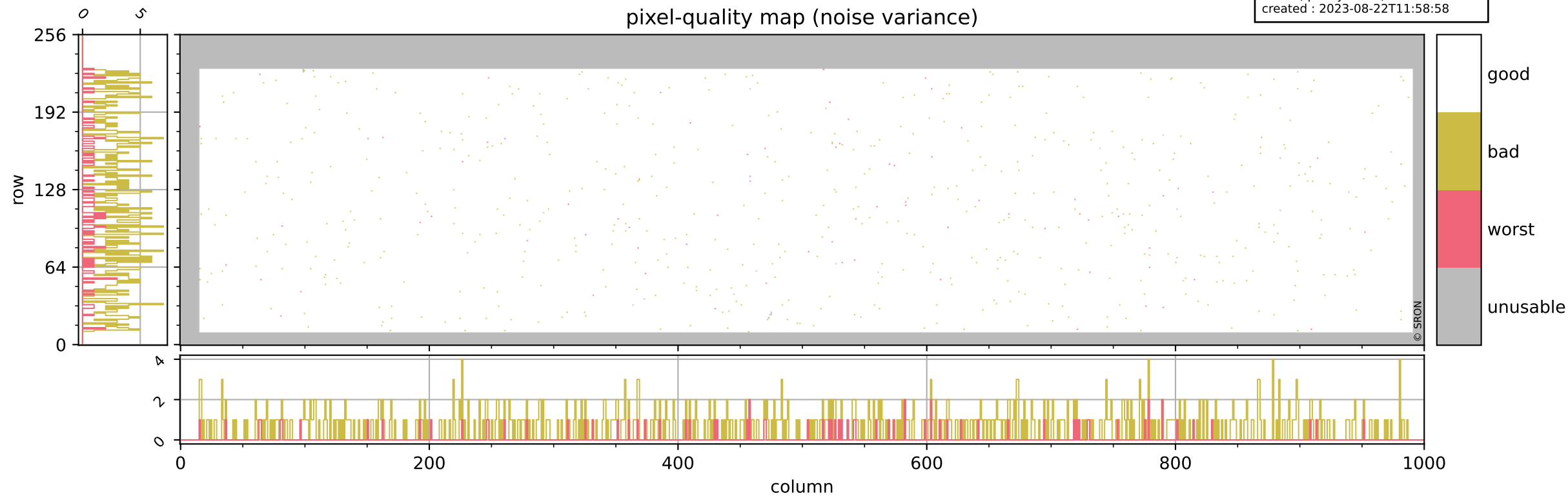
Tropomi SWIR pixel quality (beta nominal)

orbits : 20 in [10792, 10837]
coverage : 2019-11-13 / 2019-11-16
bad (quality < 0.8) : 144
worst (quality < 0.1) : 41
created : 2023-08-22T11:58:58



Tropomi SWIR pixel quality (beta nominal)

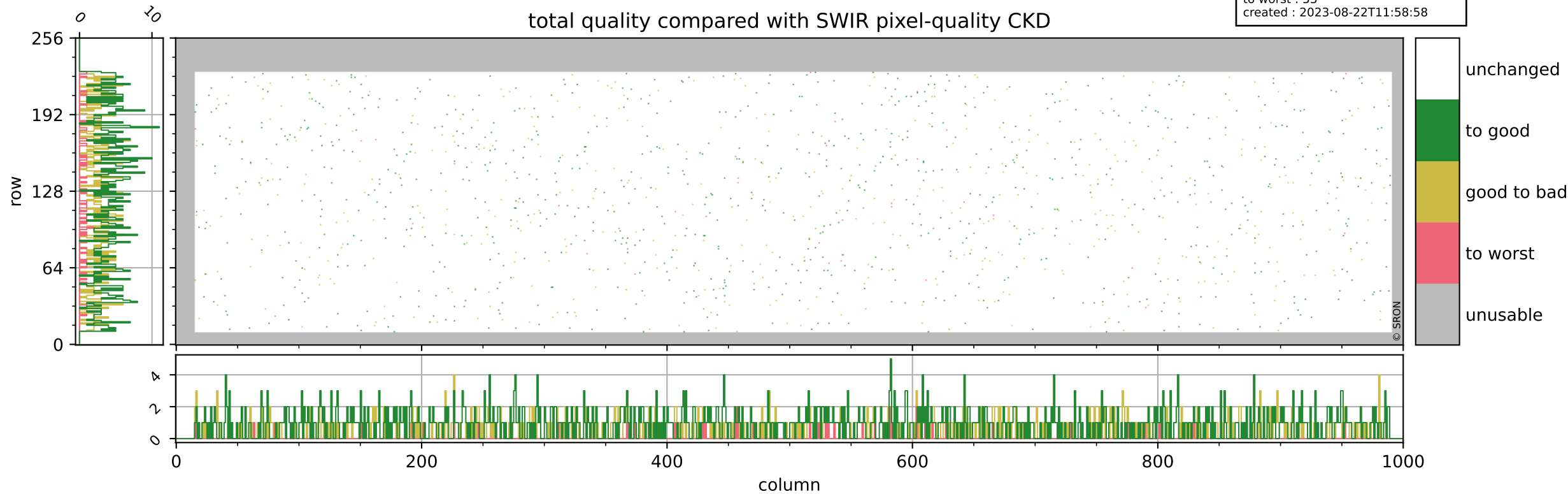
orbits : 20 in [10792, 10837]
coverage : 2019-11-13 / 2019-11-16
bad (quality < 0.8) : 620
worst (quality < 0.1) : 74
created : 2023-08-22T11:58:58



Tropomi SWIR pixel quality (beta nominal)

orbits : 20 in [10792, 10837]
coverage : 2019-11-13 / 2019-11-16
to good : 864
good to bad : 467
to worst : 53
created : 2023-08-22T11:58:58

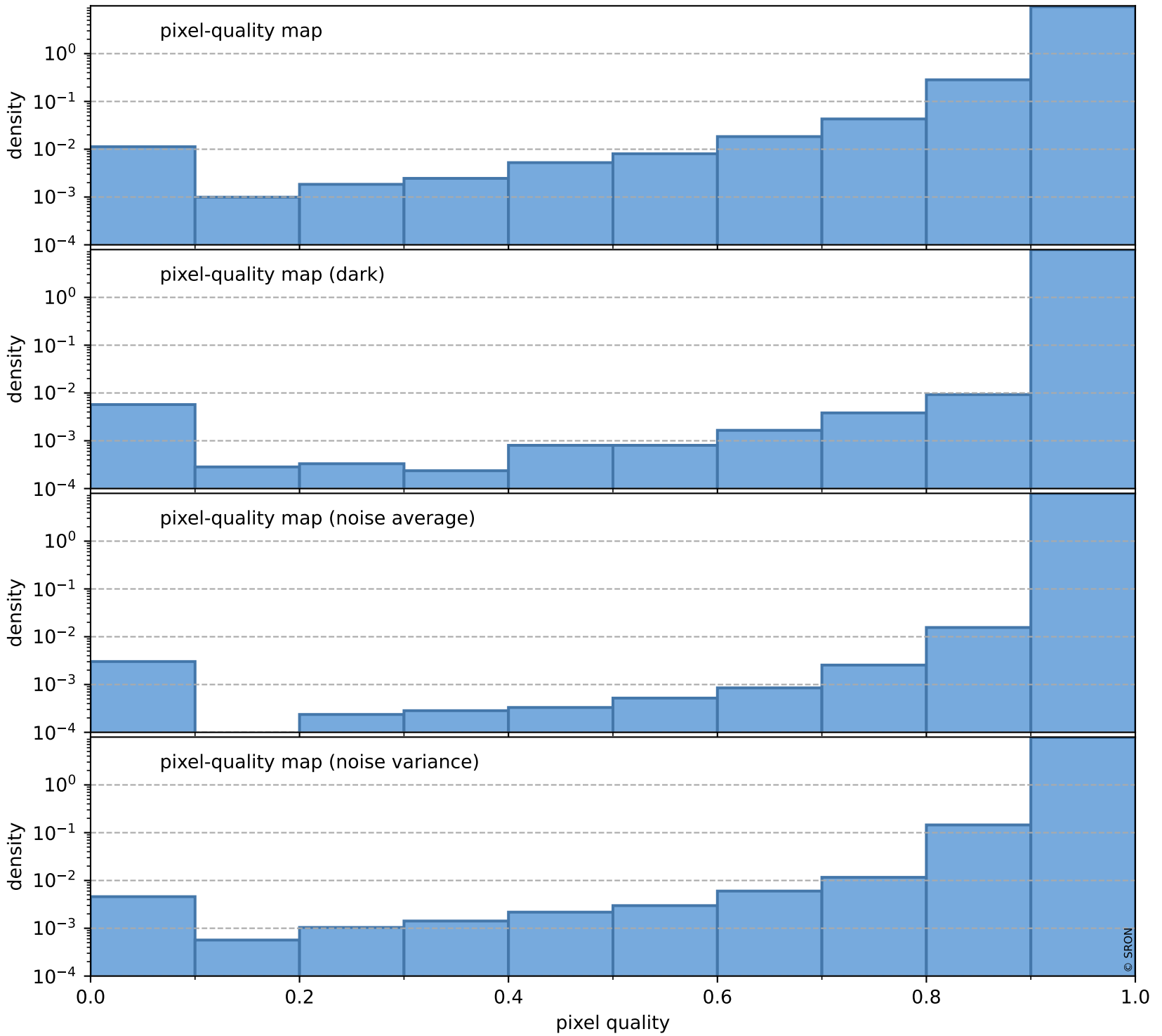
total quality compared with SWIR pixel-quality CKD



Tropomi SWIR pixel quality (beta nominal)

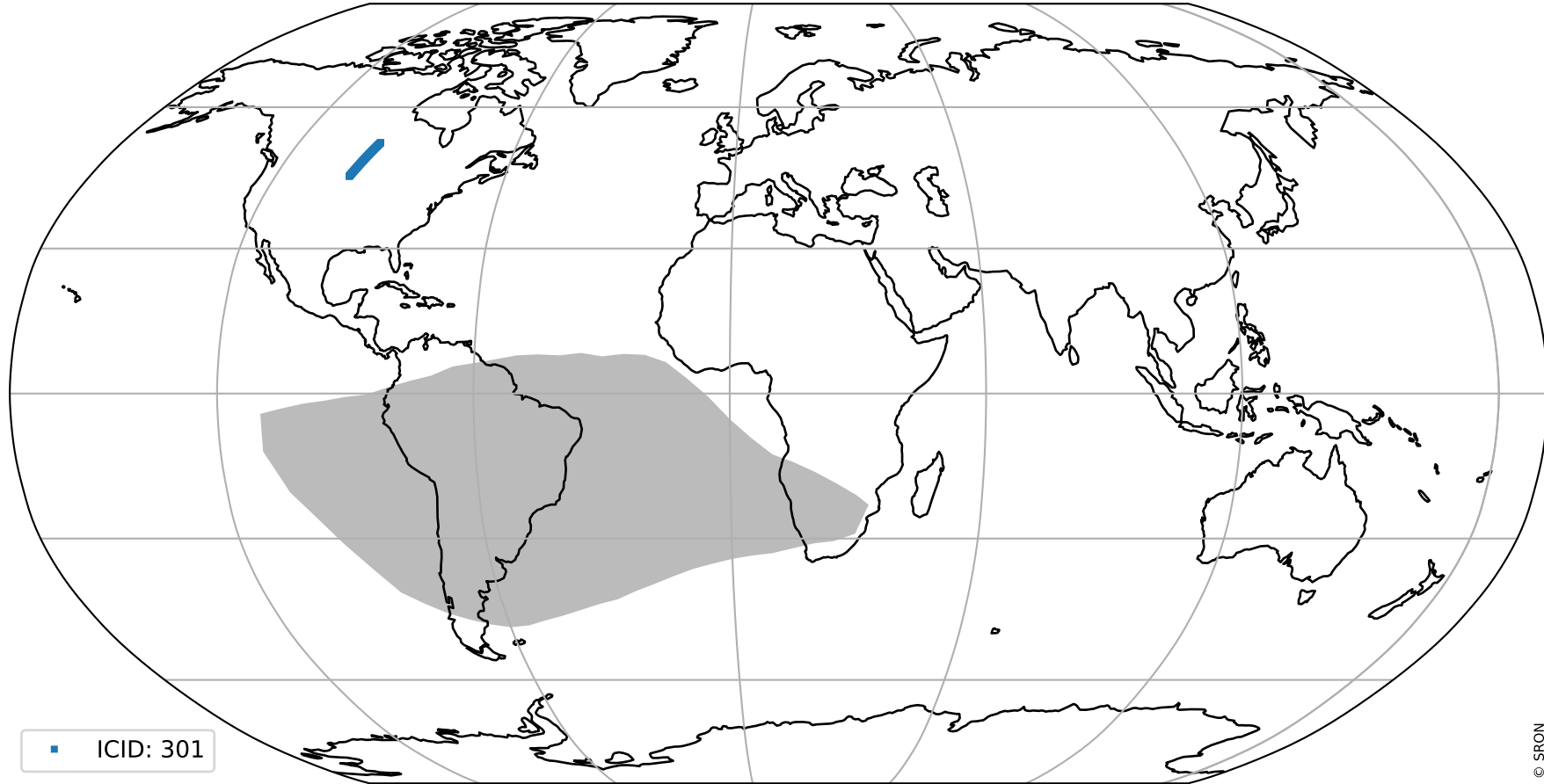
orbits : 20 in [10792, 10837]
coverage : 2019-11-13 / 2019-11-16
created : 2023-08-22T11:58:58

Histograms of pixel-quality



Tropomi SWIR pixel quality (beta nominal) ground-tracks of Sentinel-5P

orbits : 20 in [10792, 10837]
coverage : 2019-11-13 / 2019-11-16
created : 2023-08-22T11:58:59



Tropomi SWIR pixel quality (beta nominal)

orbits : [1867, 10837]
coverage : 2018-02-20 / 2019-11-16
created : 2023-08-22T11:58:59

trend of pixel quality & temperatures

