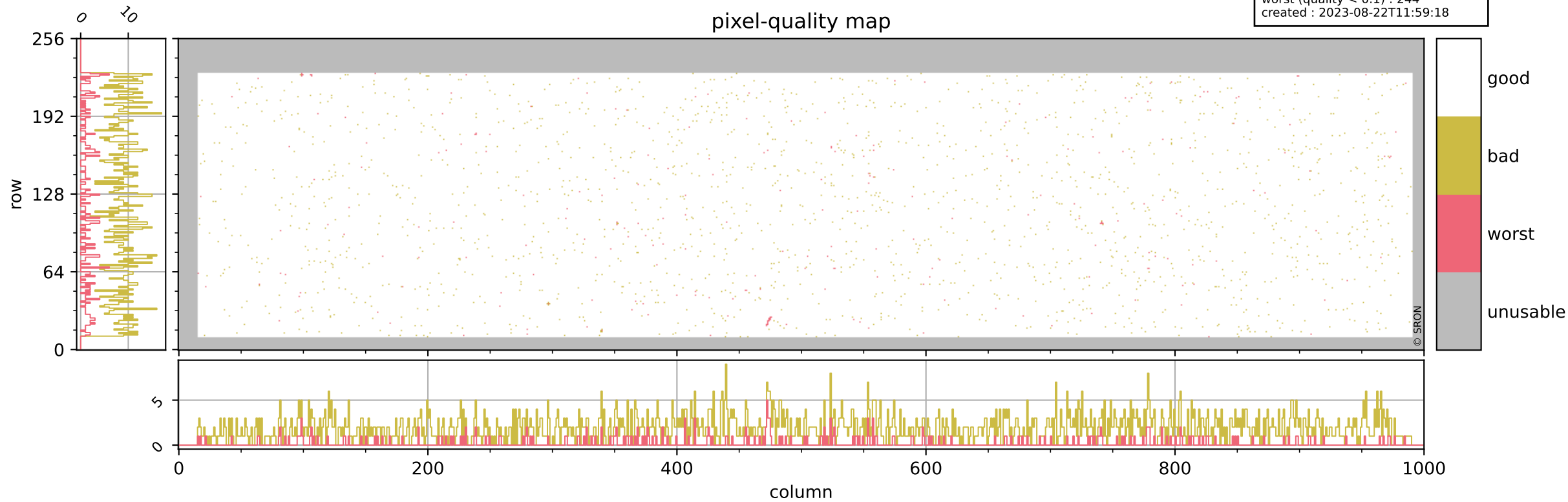


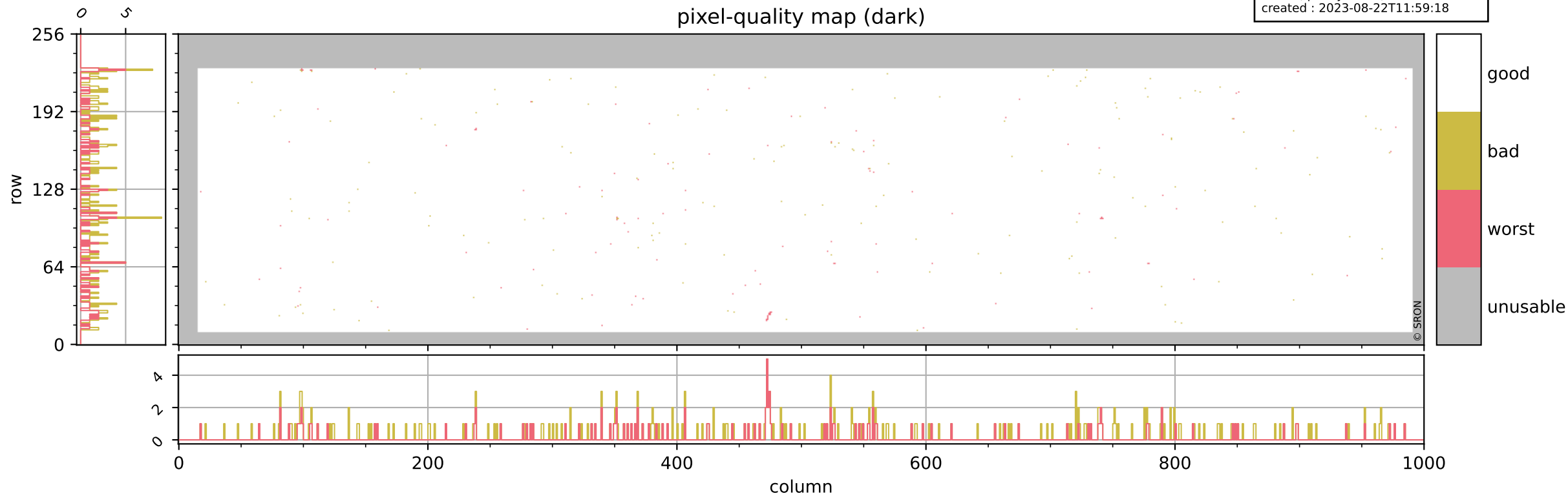
Tropomi SWIR pixel quality (beta nominal)

orbits : 20 in [11152, 11197]
coverage : 2019-12-08 / 2019-12-11
bad (quality < 0.8) : 1946
worst (quality < 0.1) : 244
created : 2023-08-22T11:59:18



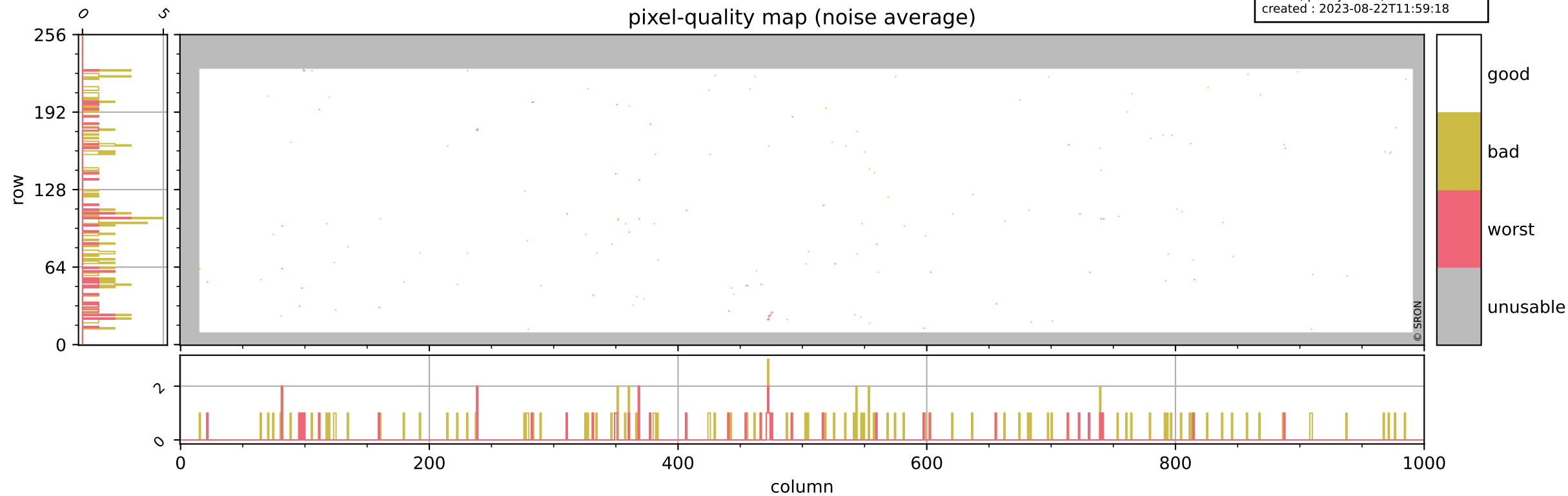
Tropomi SWIR pixel quality (beta nominal)

orbits : 20 in [11152, 11197]
coverage : 2019-12-08 / 2019-12-11
bad (quality < 0.8) : 287
worst (quality < 0.1) : 121
created : 2023-08-22T11:59:18



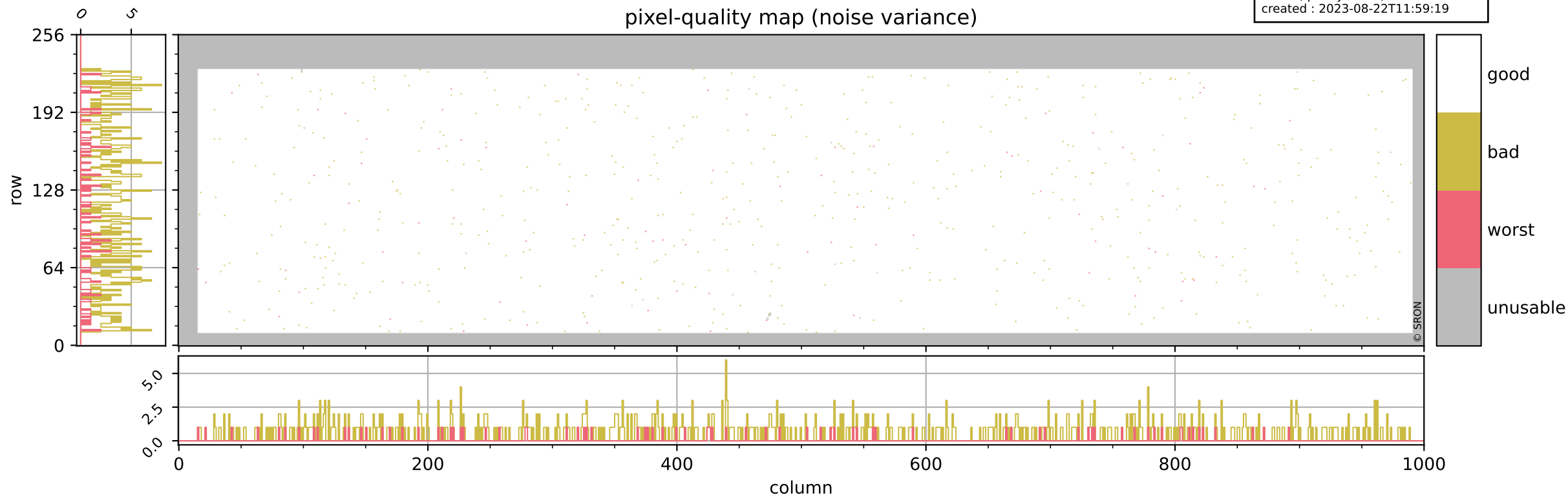
Tropomi SWIR pixel quality (beta nominal)

orbits : 20 in [11152, 11197]
coverage : 2019-12-08 / 2019-12-11
bad (quality < 0.8) : 134
worst (quality < 0.1) : 41
created : 2023-08-22T11:59:18



Tropomi SWIR pixel quality (beta nominal)

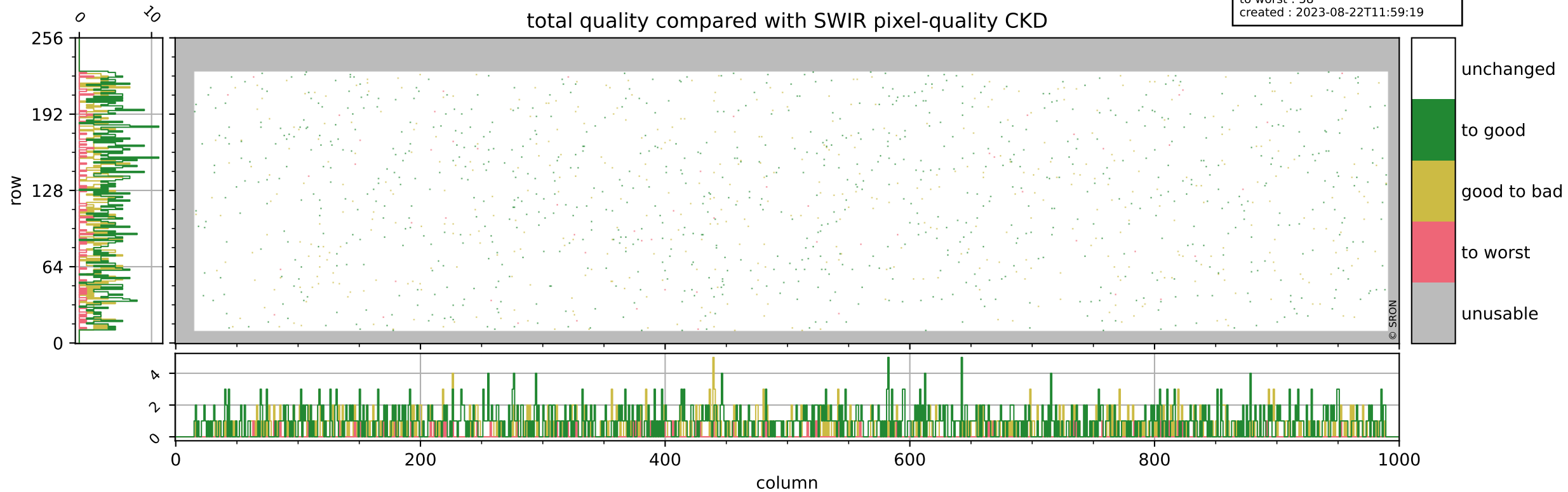
orbits : 20 in [11152, 11197]
coverage : 2019-12-08 / 2019-12-11
bad (quality < 0.8) : 639
worst (quality < 0.1) : 79
created : 2023-08-22T11:59:19



Tropomi SWIR pixel quality (beta nominal)

orbits : 20 in [11152, 11197]
coverage : 2019-12-08 / 2019-12-11
to good : 864
good to bad : 481
to worst : 58
created : 2023-08-22T11:59:19

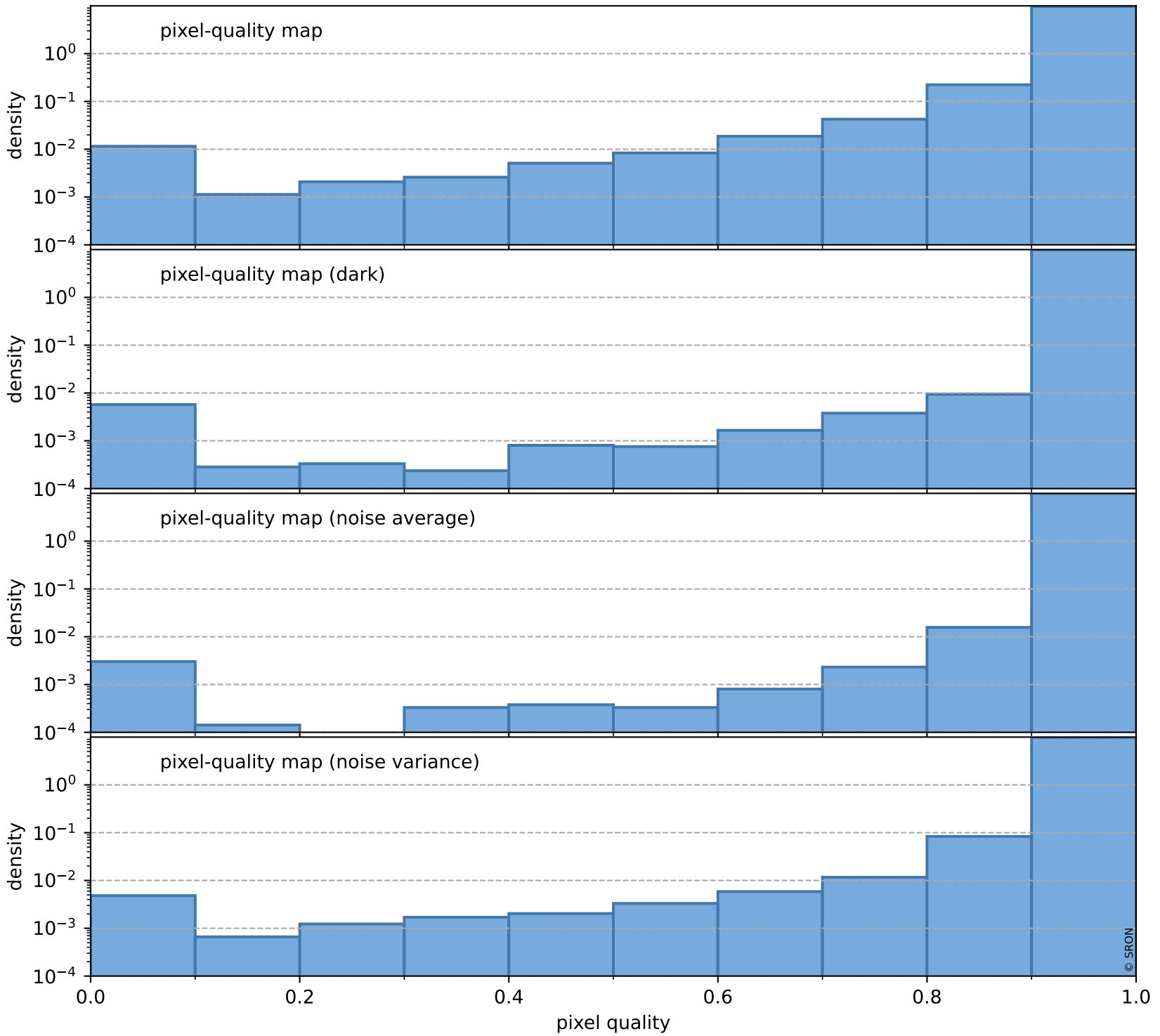
total quality compared with SWIR pixel-quality CKD



Tropomi SWIR pixel quality (beta nominal)

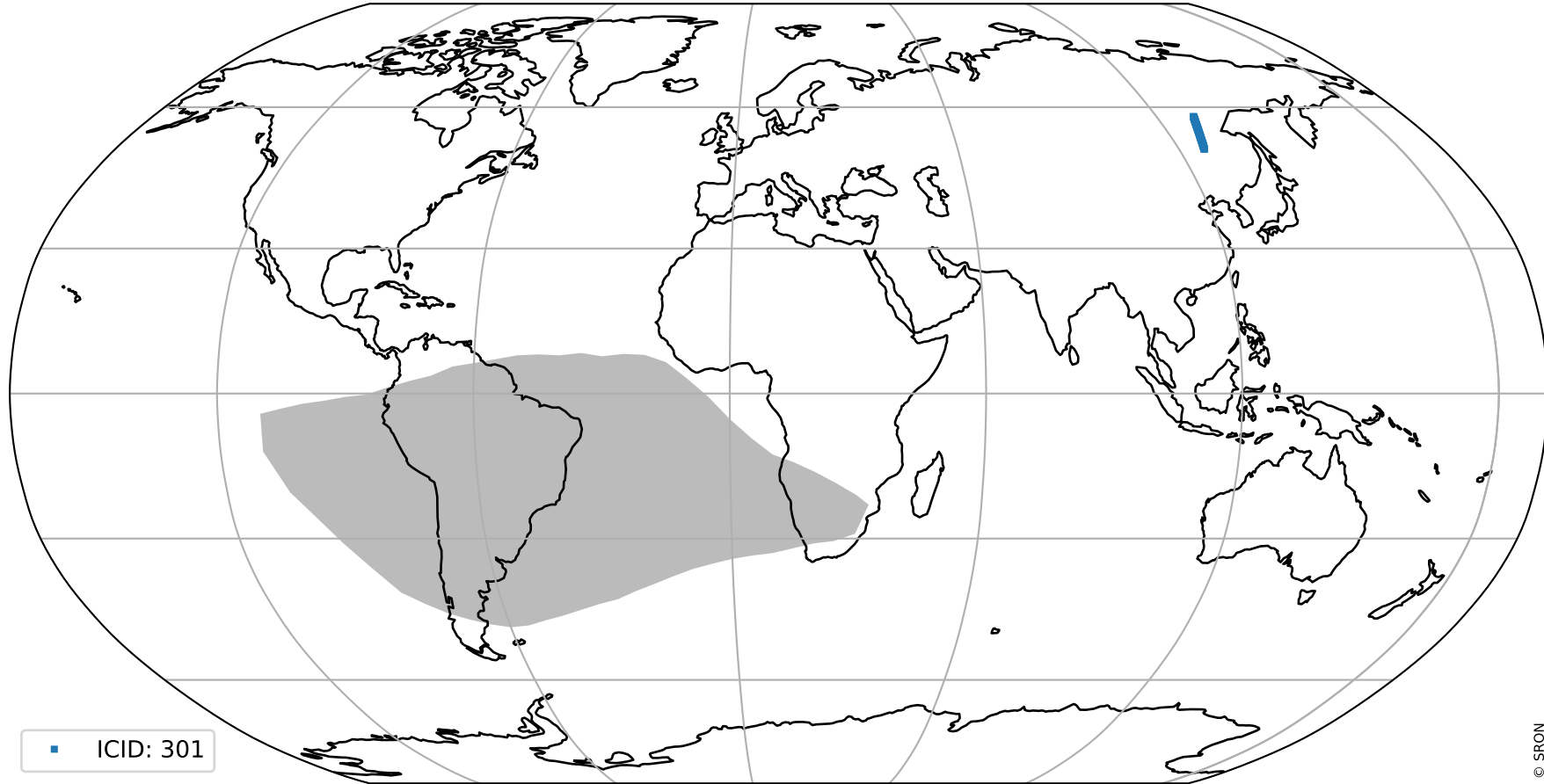
orbits : 20 in [11152, 11197]
coverage : 2019-12-08 / 2019-12-11
created : 2023-08-22T11:59:19

Histograms of pixel-quality



Tropomi SWIR pixel quality (beta nominal) ground-tracks of Sentinel-5P

orbits : 20 in [11152, 11197]
coverage : 2019-12-08 / 2019-12-11
created : 2023-08-22T11:59:20



Tropomi SWIR pixel quality (beta nominal)

orbits : [1867, 11197]
coverage : 2018-02-20 / 2019-12-11
created : 2023-08-22T11:59:20

trend of pixel quality & temperatures

