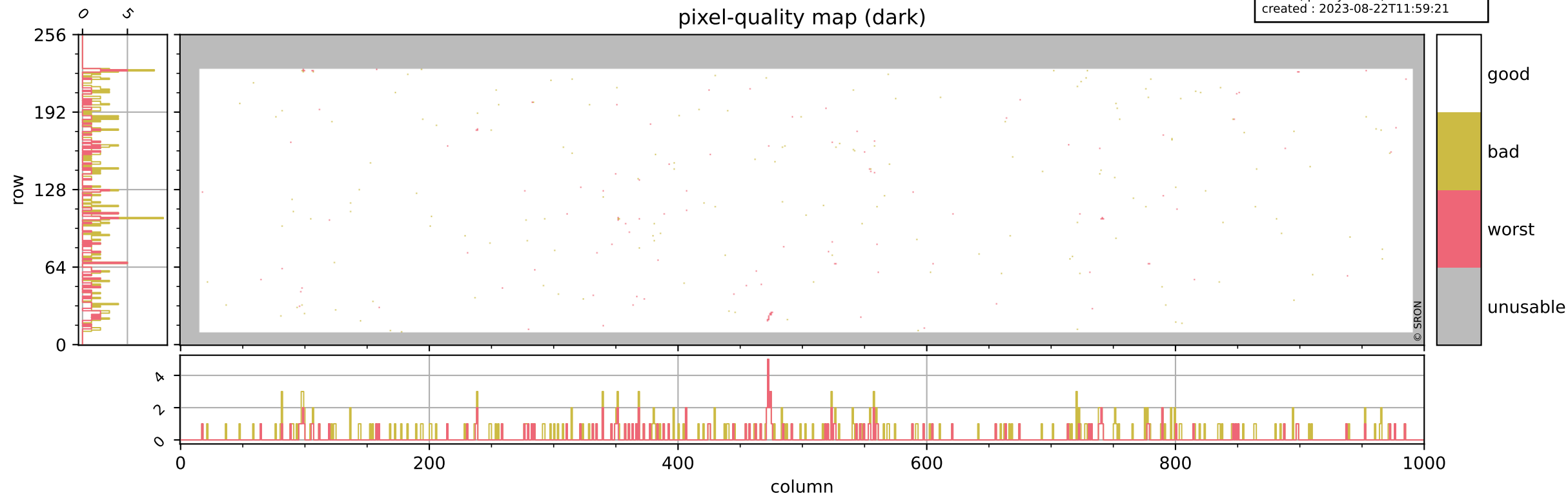


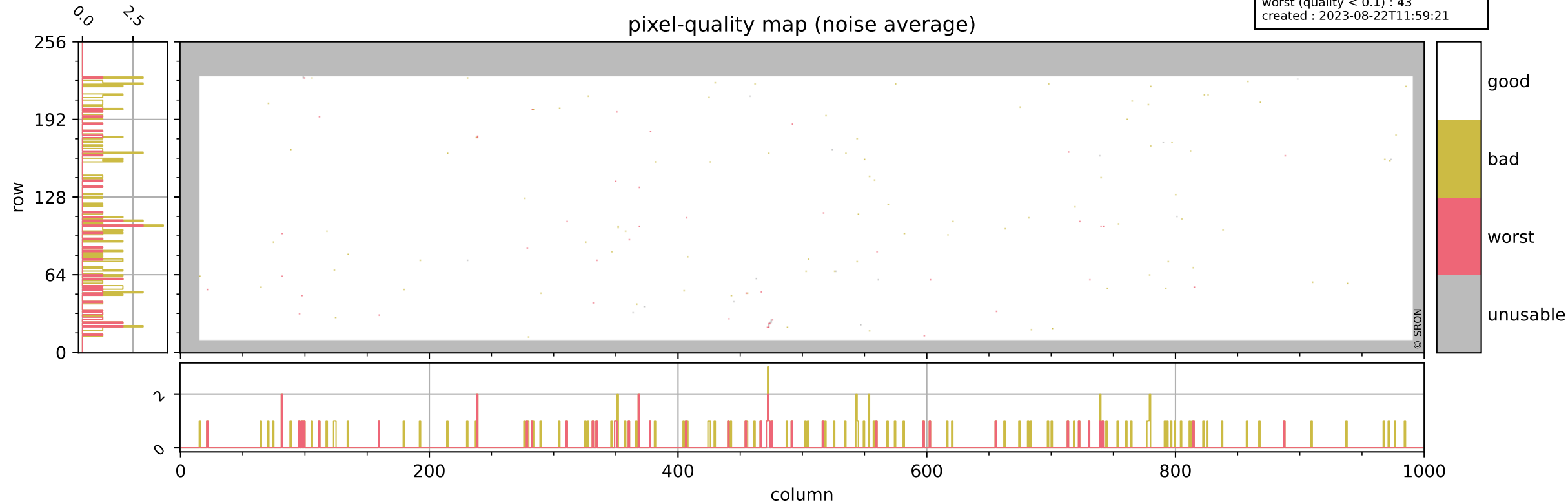
Tropomi SWIR pixel quality (beta nominal)

orbits : 19 in [11197, 11242]
coverage : 2019-12-11 / 2019-12-14
bad (quality < 0.8) : 287
worst (quality < 0.1) : 120
created : 2023-08-22T11:59:21



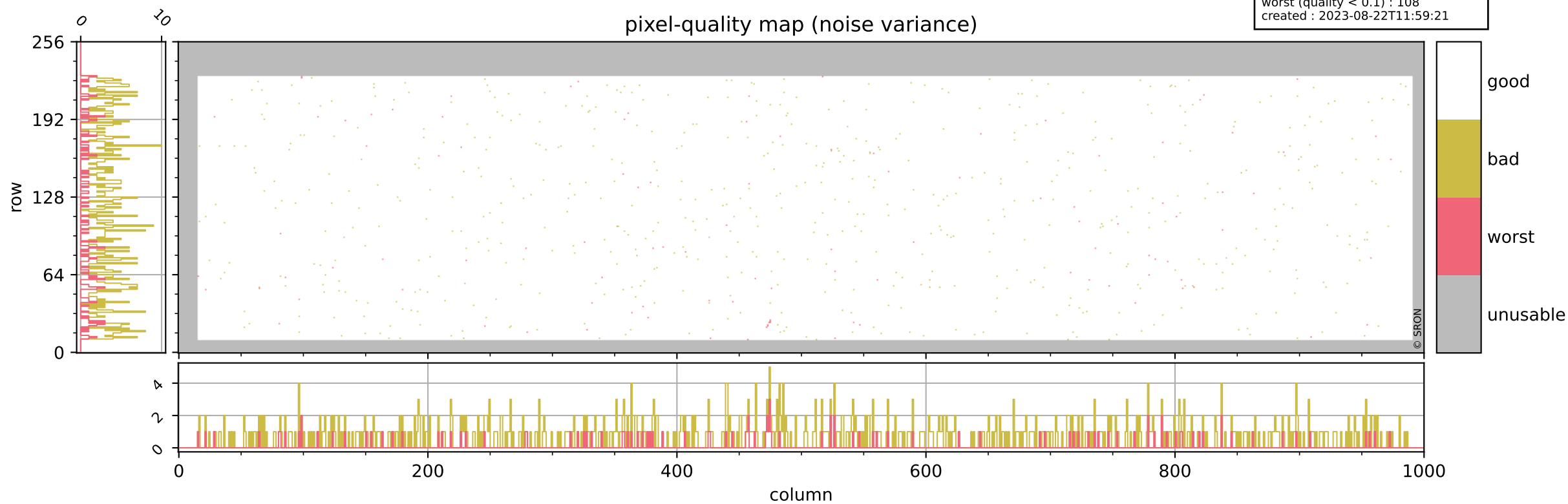
Tropomi SWIR pixel quality (beta nominal)

orbits : 19 in [11197, 11242]
coverage : 2019-12-11 / 2019-12-14
bad (quality < 0.8) : 132
worst (quality < 0.1) : 43
created : 2023-08-22T11:59:21



Tropomi SWIR pixel quality (beta nominal)

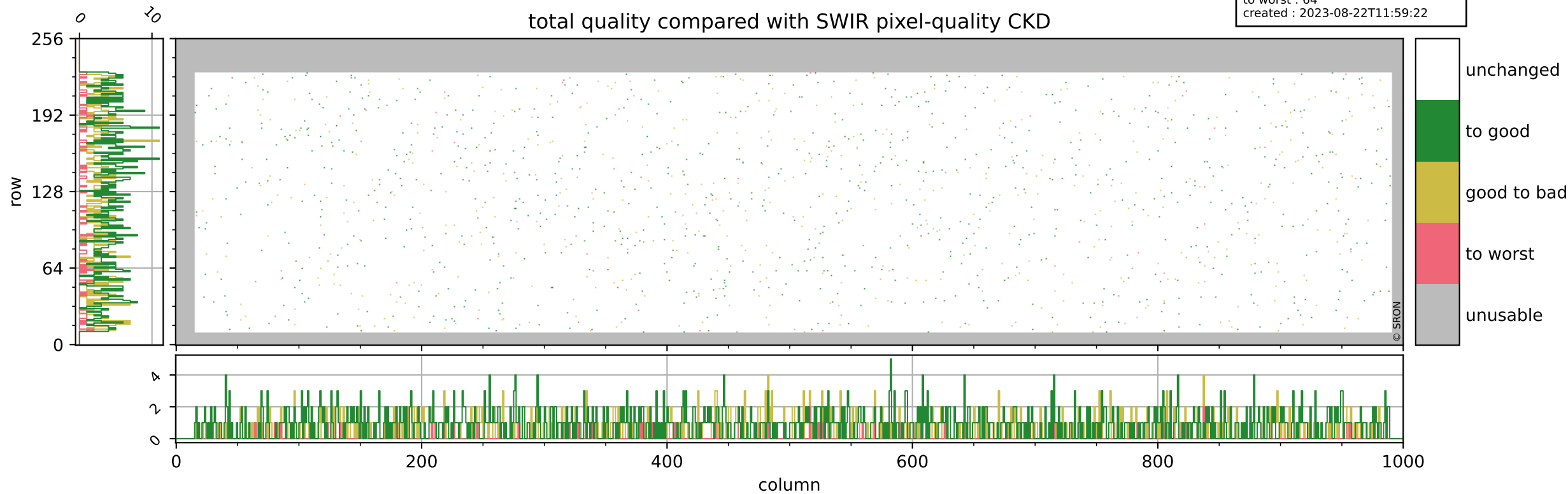
orbits : 19 in [11197, 11242]
coverage : 2019-12-11 / 2019-12-14
bad (quality < 0.8) : 698
worst (quality < 0.1) : 108
created : 2023-08-22T11:59:21



Tropomi SWIR pixel quality (beta nominal)

orbits : 19 in [11197, 11242]
coverage : 2019-12-11 / 2019-12-14
to good : 866
good to bad : 508
to worst : 64
created : 2023-08-22T11:59:22

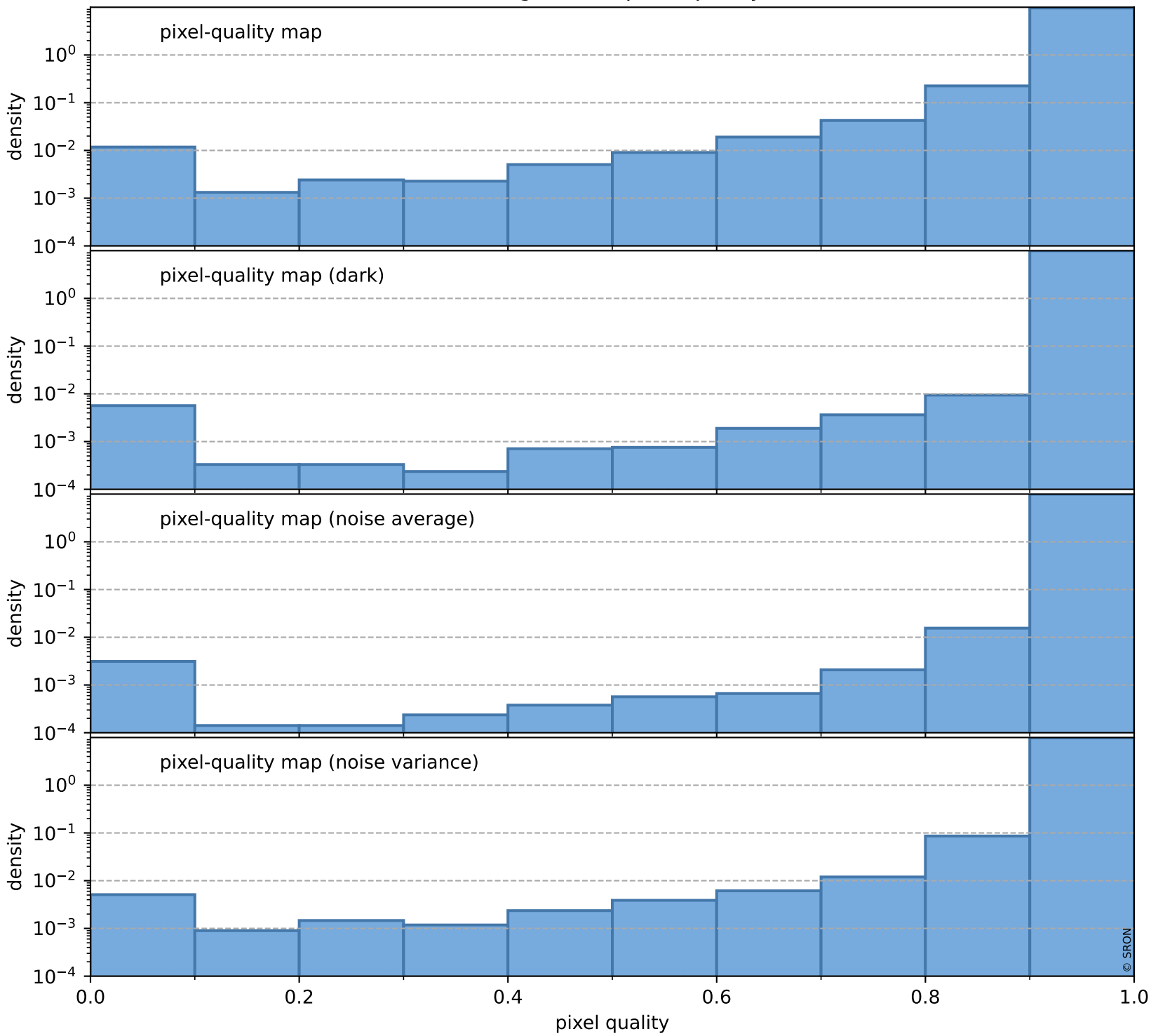
total quality compared with SWIR pixel-quality CKD



Tropomi SWIR pixel quality (beta nominal)

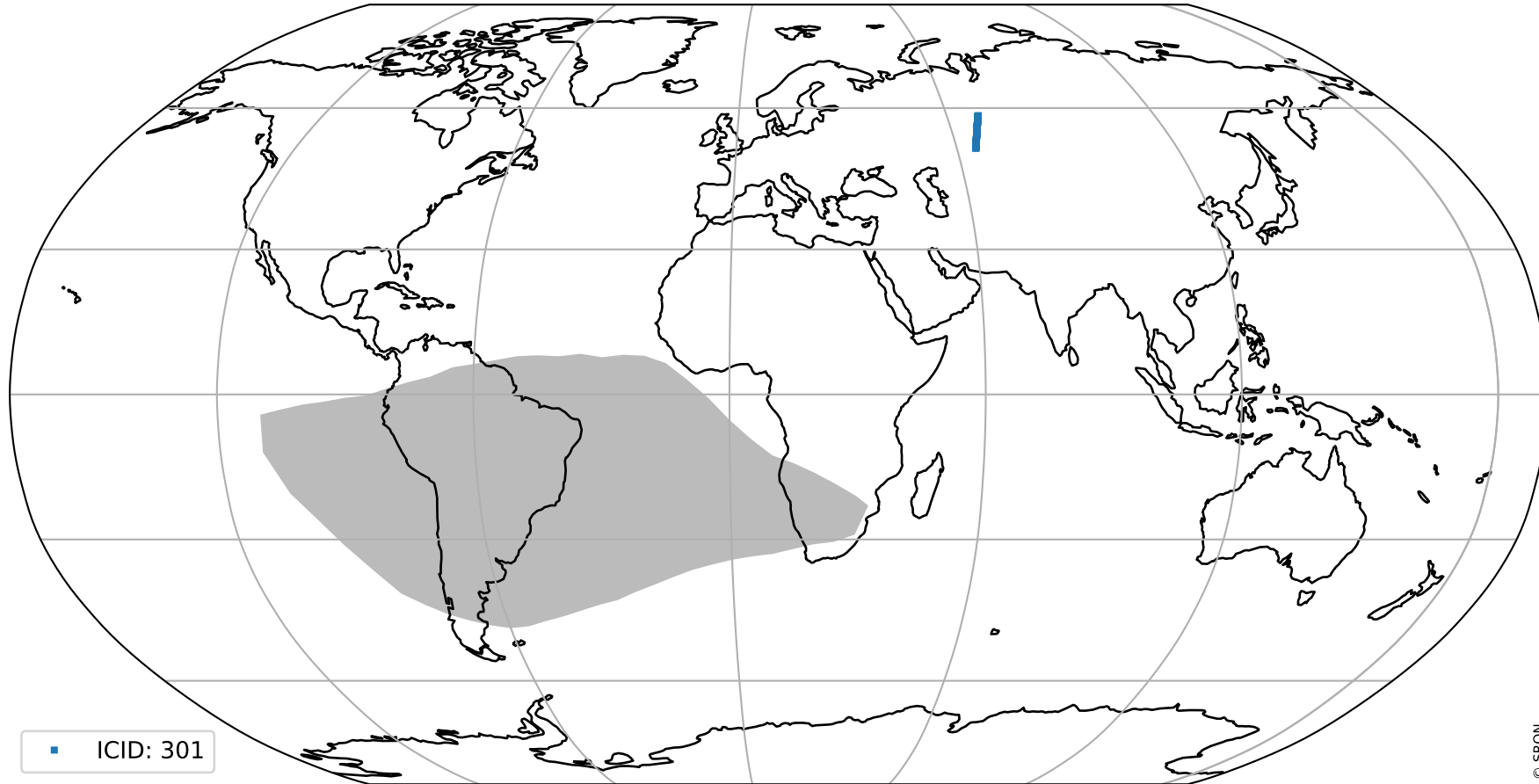
orbits : 19 in [11197, 11242]
coverage : 2019-12-11 / 2019-12-14
created : 2023-08-22T11:59:22

Histograms of pixel-quality



Tropomi SWIR pixel quality (beta nominal) ground-tracks of Sentinel-5P

orbits : 19 in [11197, 11242]
coverage : 2019-12-11 / 2019-12-14
created : 2023-08-22T11:59:23



Tropomi SWIR pixel quality (beta nominal)

orbits : [1867, 11242]
coverage : 2018-02-20 / 2019-12-14
created : 2023-08-22T11:59:23

trend of pixel quality & temperatures

