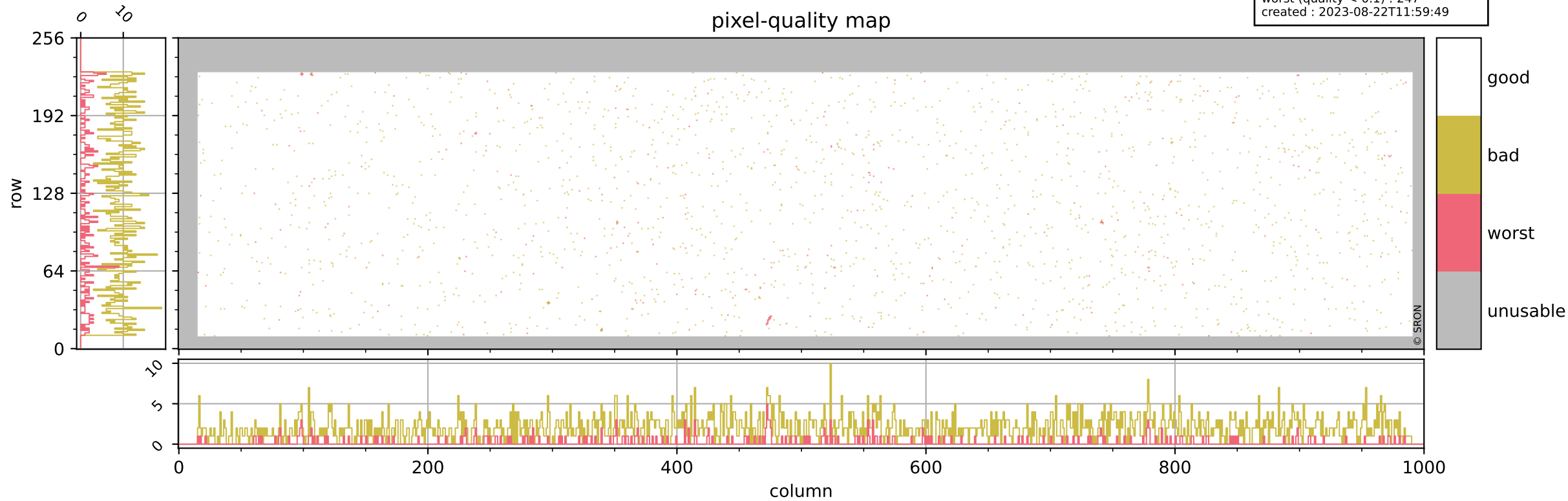


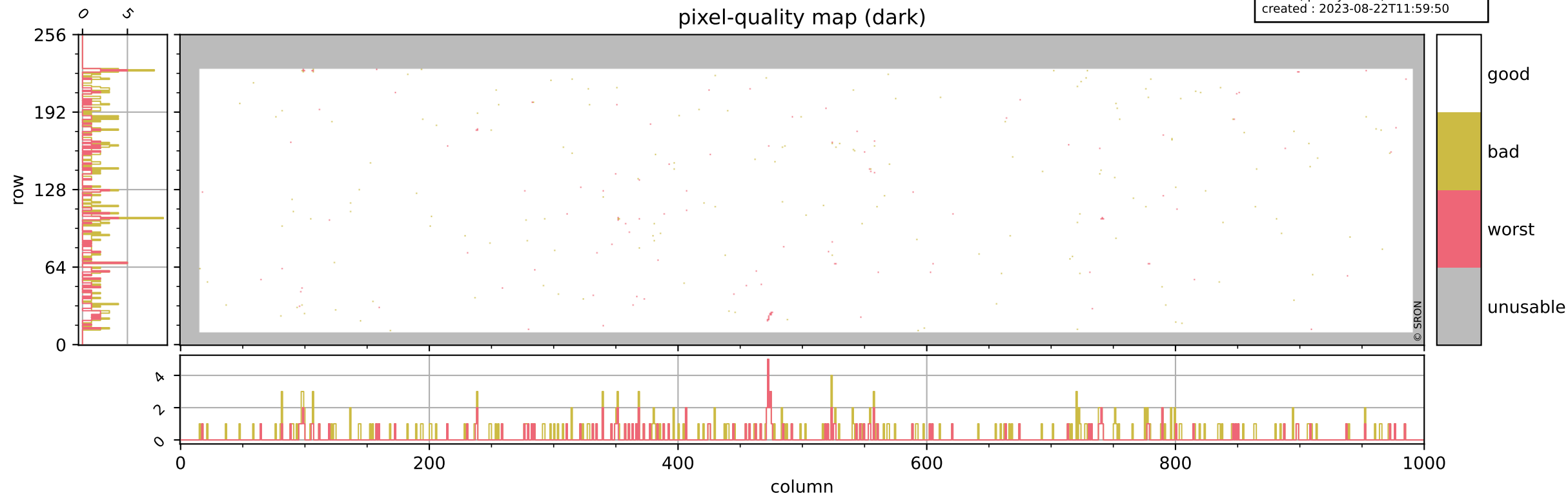
# Tropomi SWIR pixel quality (beta nominal)

orbits : 20 in [11692, 11737]  
coverage : 2020-01-15 / 2020-01-18  
bad (quality < 0.8) : 2039  
worst (quality < 0.1) : 247  
created : 2023-08-22T11:59:49



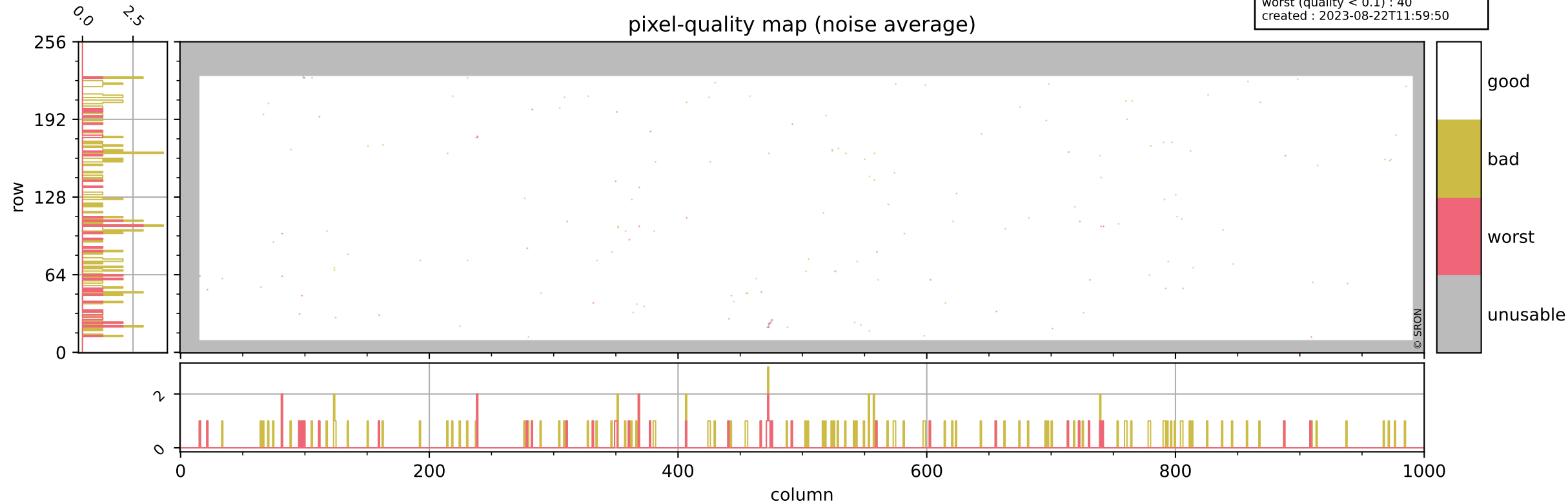
# Tropomi SWIR pixel quality (beta nominal)

orbits : 20 in [11692, 11737]  
coverage : 2020-01-15 / 2020-01-18  
bad (quality < 0.8) : 290  
worst (quality < 0.1) : 119  
created : 2023-08-22T11:59:50



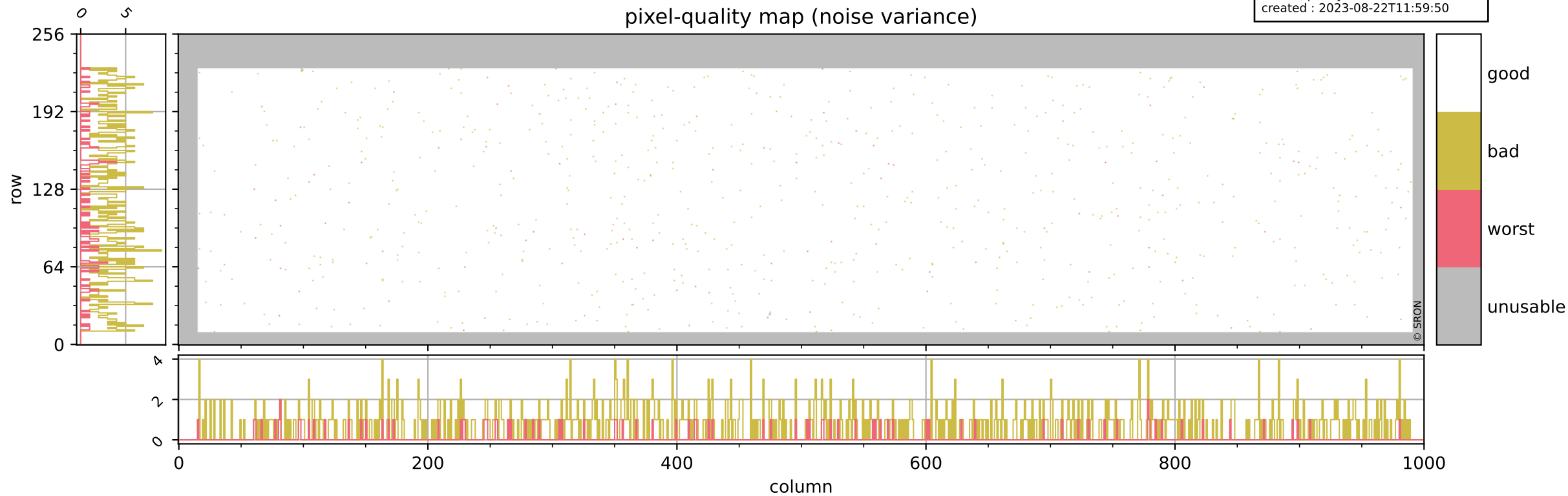
# Tropomi SWIR pixel quality (beta nominal)

orbits : 20 in [11692, 11737]  
coverage : 2020-01-15 / 2020-01-18  
bad (quality < 0.8) : 145  
worst (quality < 0.1) : 40  
created : 2023-08-22T11:59:50



# Tropomi SWIR pixel quality (beta nominal)

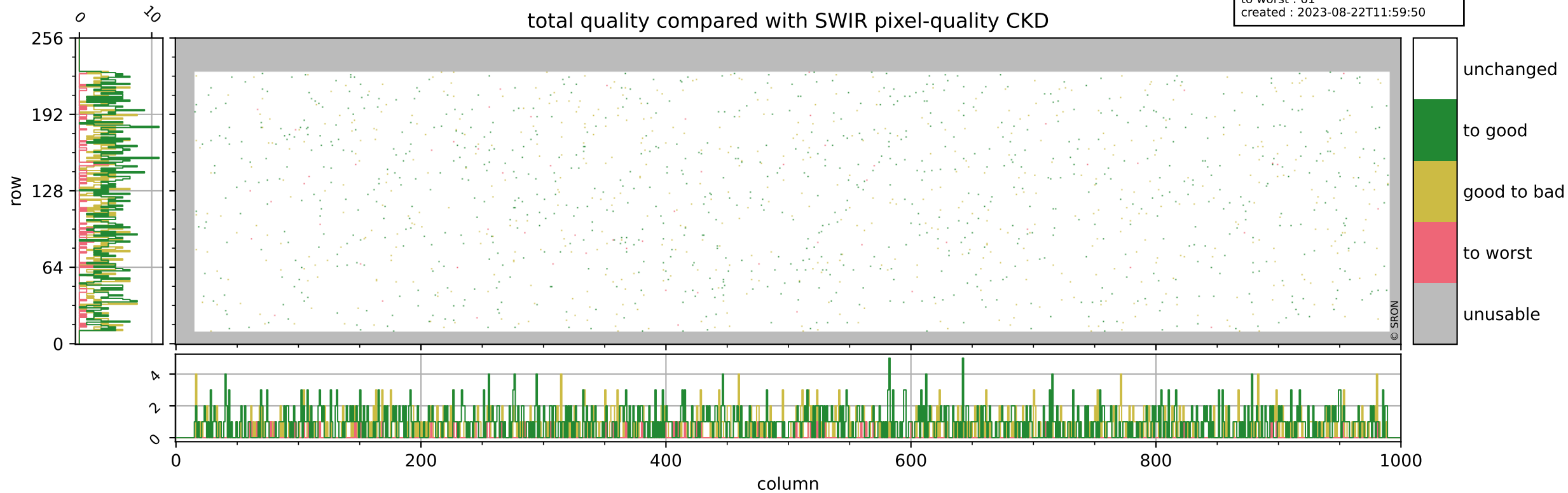
orbits : 20 in [11692, 11737]  
coverage : 2020-01-15 / 2020-01-18  
bad (quality < 0.8) : 723  
worst (quality < 0.1) : 85  
created : 2023-08-22T11:59:50



# Tropomi SWIR pixel quality (beta nominal)

orbits : 20 in [11692, 11737]  
coverage : 2020-01-15 / 2020-01-18  
to good : 866  
good to bad : 572  
to worst : 61  
created : 2023-08-22T11:59:50

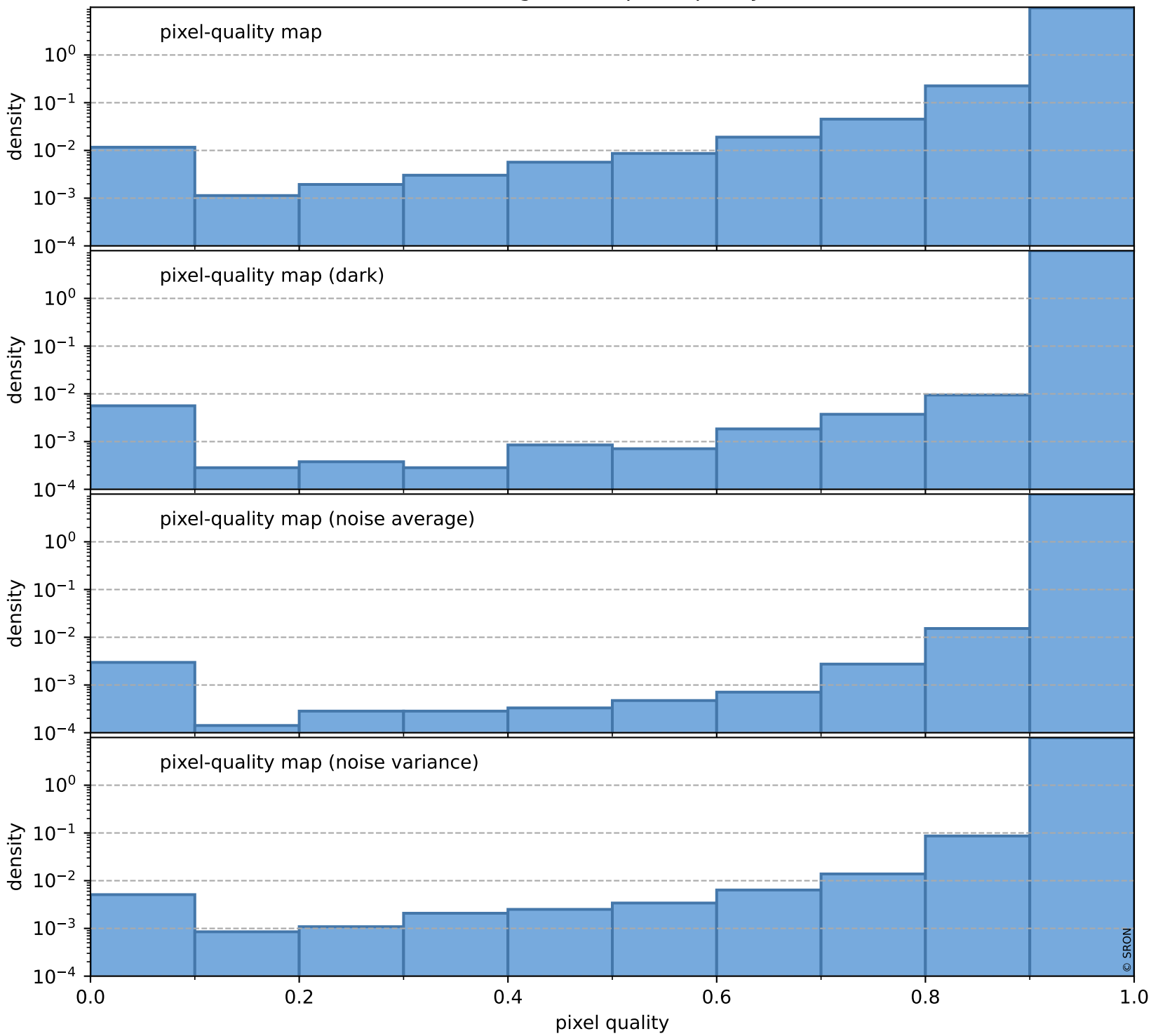
## total quality compared with SWIR pixel-quality CKD



# Tropomi SWIR pixel quality (beta nominal)

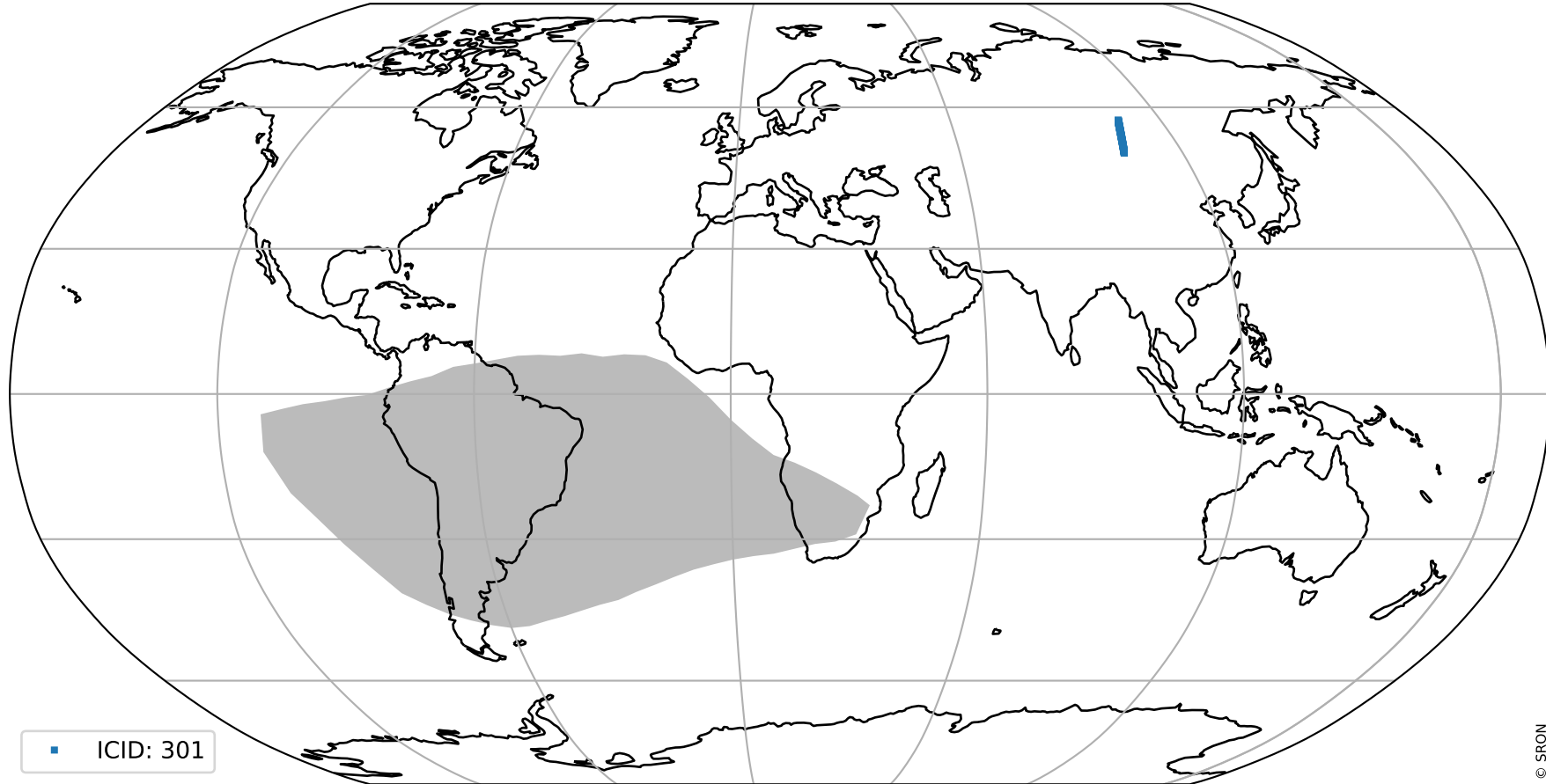
orbits : 20 in [11692, 11737]  
coverage : 2020-01-15 / 2020-01-18  
created : 2023-08-22T11:59:51

## Histograms of pixel-quality



# Tropomi SWIR pixel quality (beta nominal) ground-tracks of Sentinel-5P

orbits : 20 in [11692, 11737]  
coverage : 2020-01-15 / 2020-01-18  
created : 2023-08-22T11:59:51



■ ICID: 301

# Tropomi SWIR pixel quality (beta nominal)

orbits : [1867, 11737]  
coverage : 2018-02-20 / 2020-01-18  
created : 2023-08-22T11:59:51

## trend of pixel quality & temperatures

