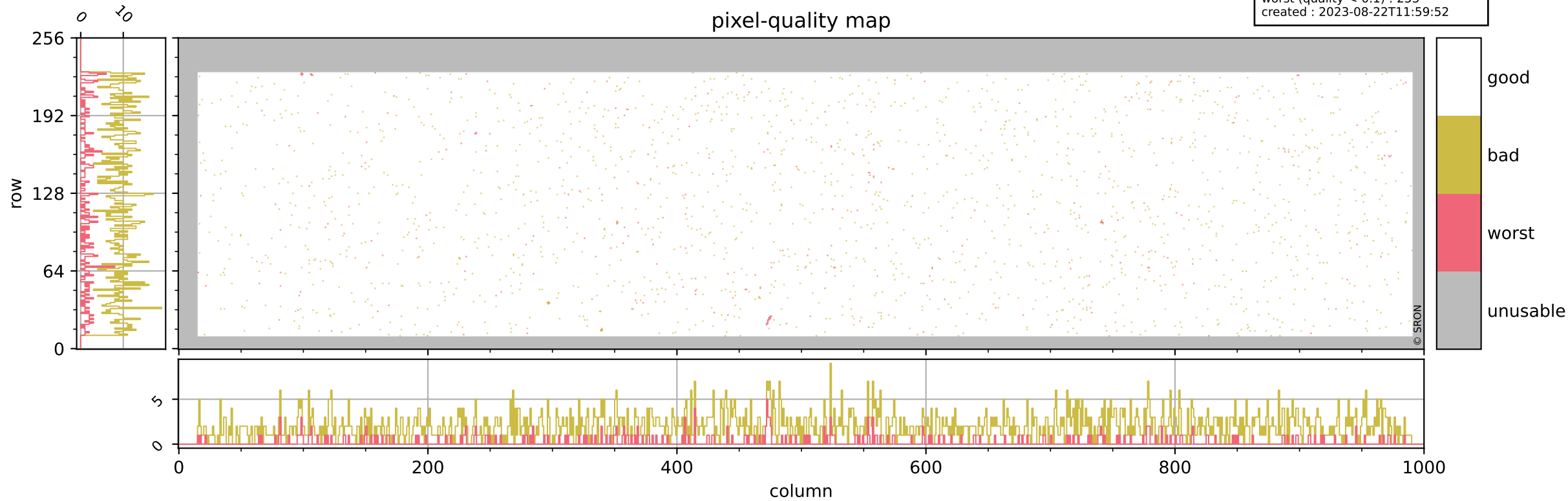


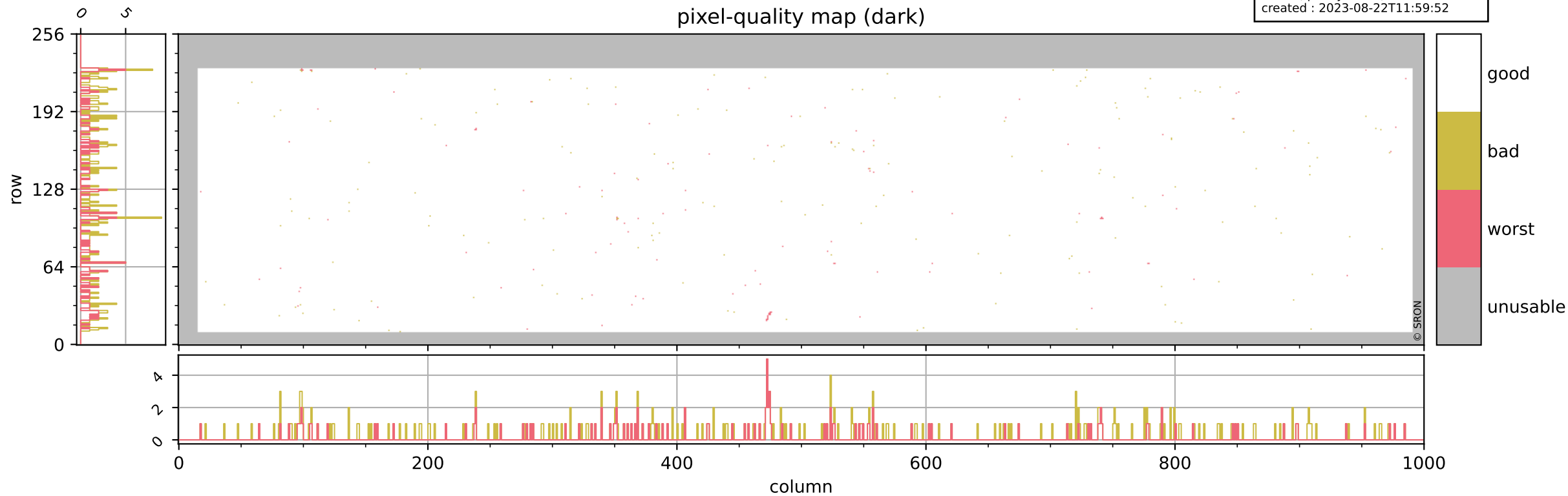
Tropomi SWIR pixel quality (beta nominal)

orbits : 19 in [11737, 11782]
coverage : 2020-01-18 / 2020-01-21
bad (quality < 0.8) : 2036
worst (quality < 0.1) : 253
created : 2023-08-22T11:59:52



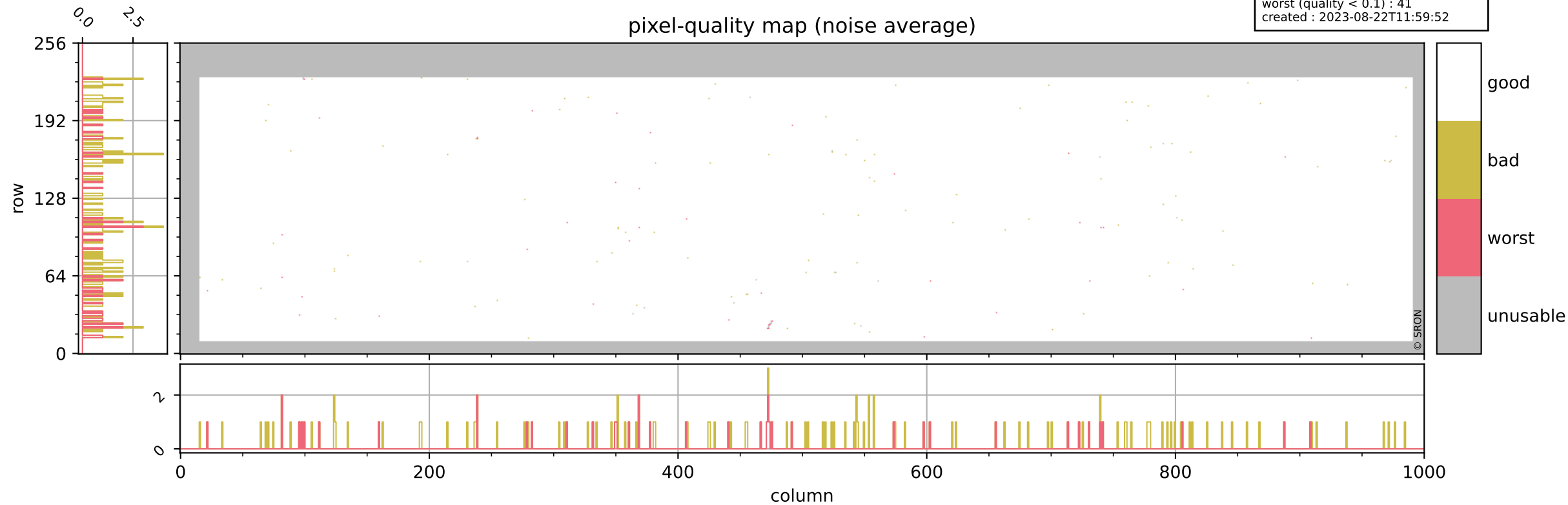
Tropomi SWIR pixel quality (beta nominal)

orbits : 19 in [11737, 11782]
coverage : 2020-01-18 / 2020-01-21
bad (quality < 0.8) : 289
worst (quality < 0.1) : 119
created : 2023-08-22T11:59:52



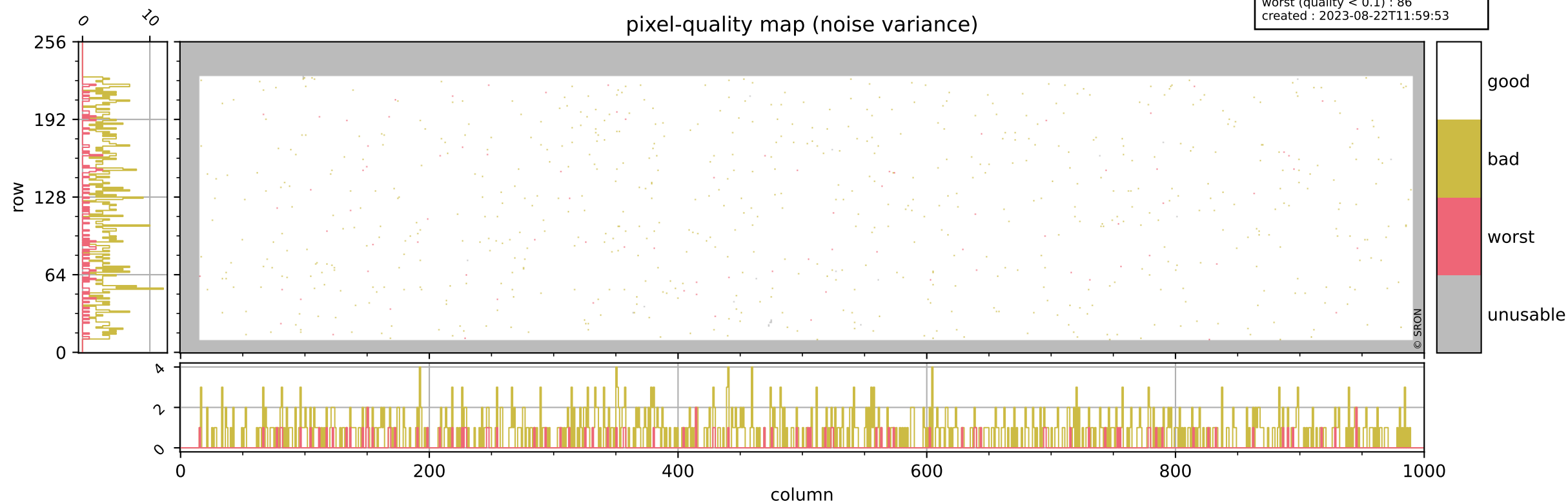
Tropomi SWIR pixel quality (beta nominal)

orbits : 19 in [11737, 11782]
coverage : 2020-01-18 / 2020-01-21
bad (quality < 0.8) : 136
worst (quality < 0.1) : 41
created : 2023-08-22T11:59:52



Tropomi SWIR pixel quality (beta nominal)

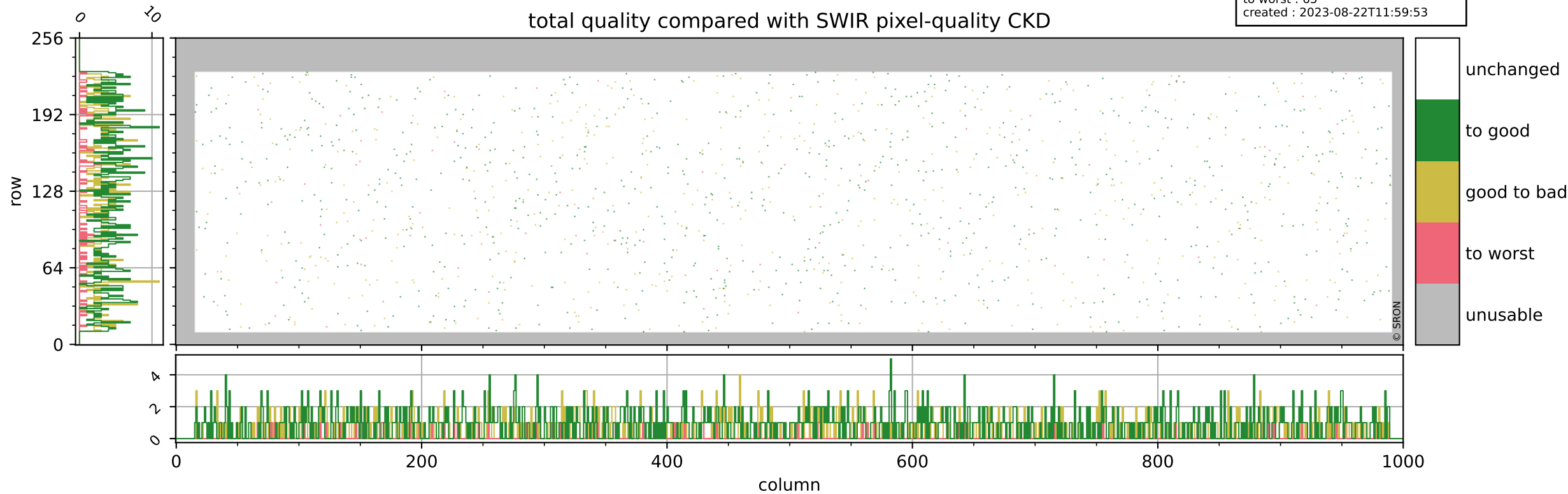
orbits : 19 in [11737, 11782]
coverage : 2020-01-18 / 2020-01-21
bad (quality < 0.8) : 725
worst (quality < 0.1) : 86
created : 2023-08-22T11:59:53



Tropomi SWIR pixel quality (beta nominal)

orbits : 19 in [11737, 11782]
coverage : 2020-01-18 / 2020-01-21
to good : 866
good to bad : 563
to worst : 65
created : 2023-08-22T11:59:53

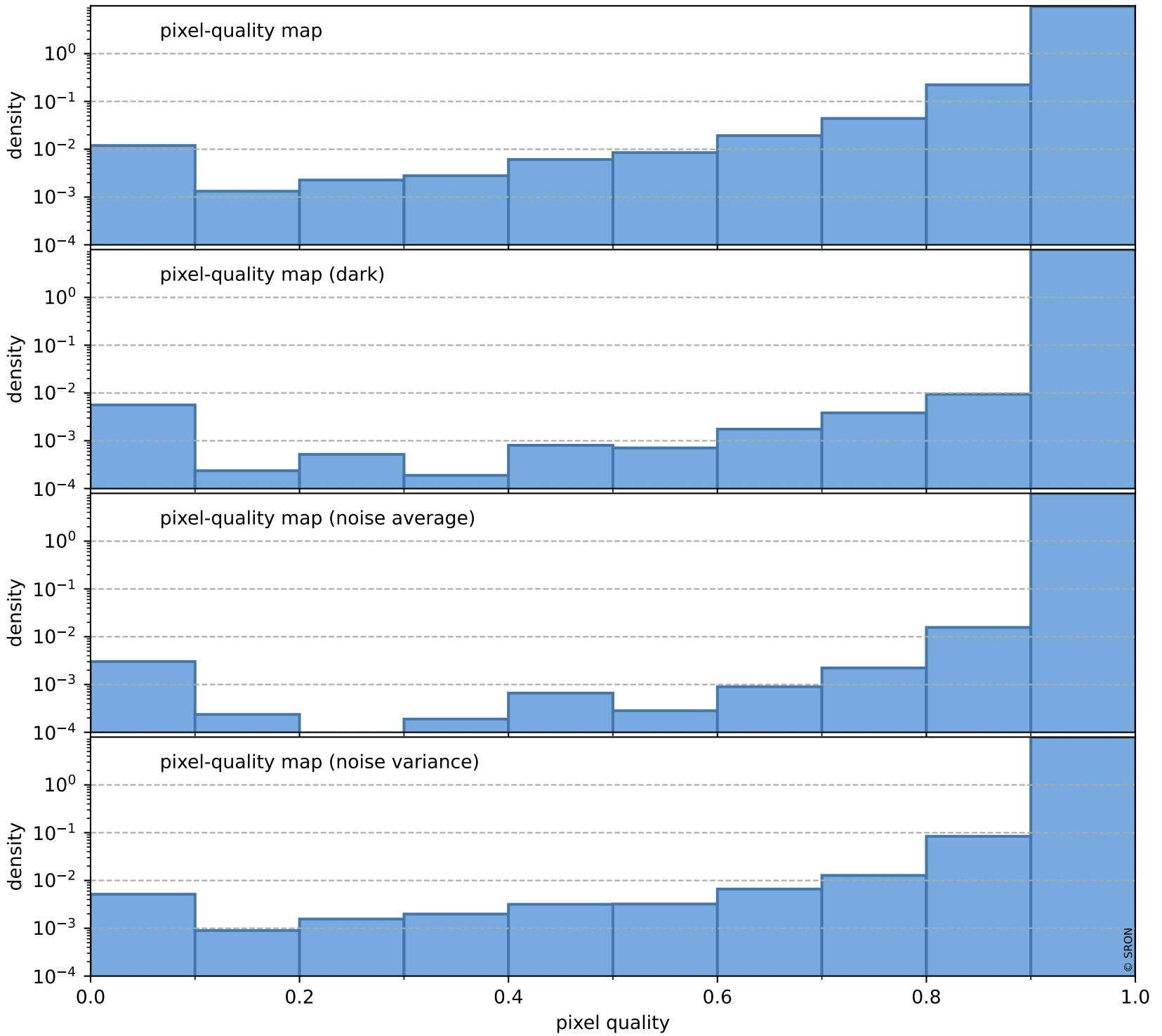
total quality compared with SWIR pixel-quality CKD



Tropomi SWIR pixel quality (beta nominal)

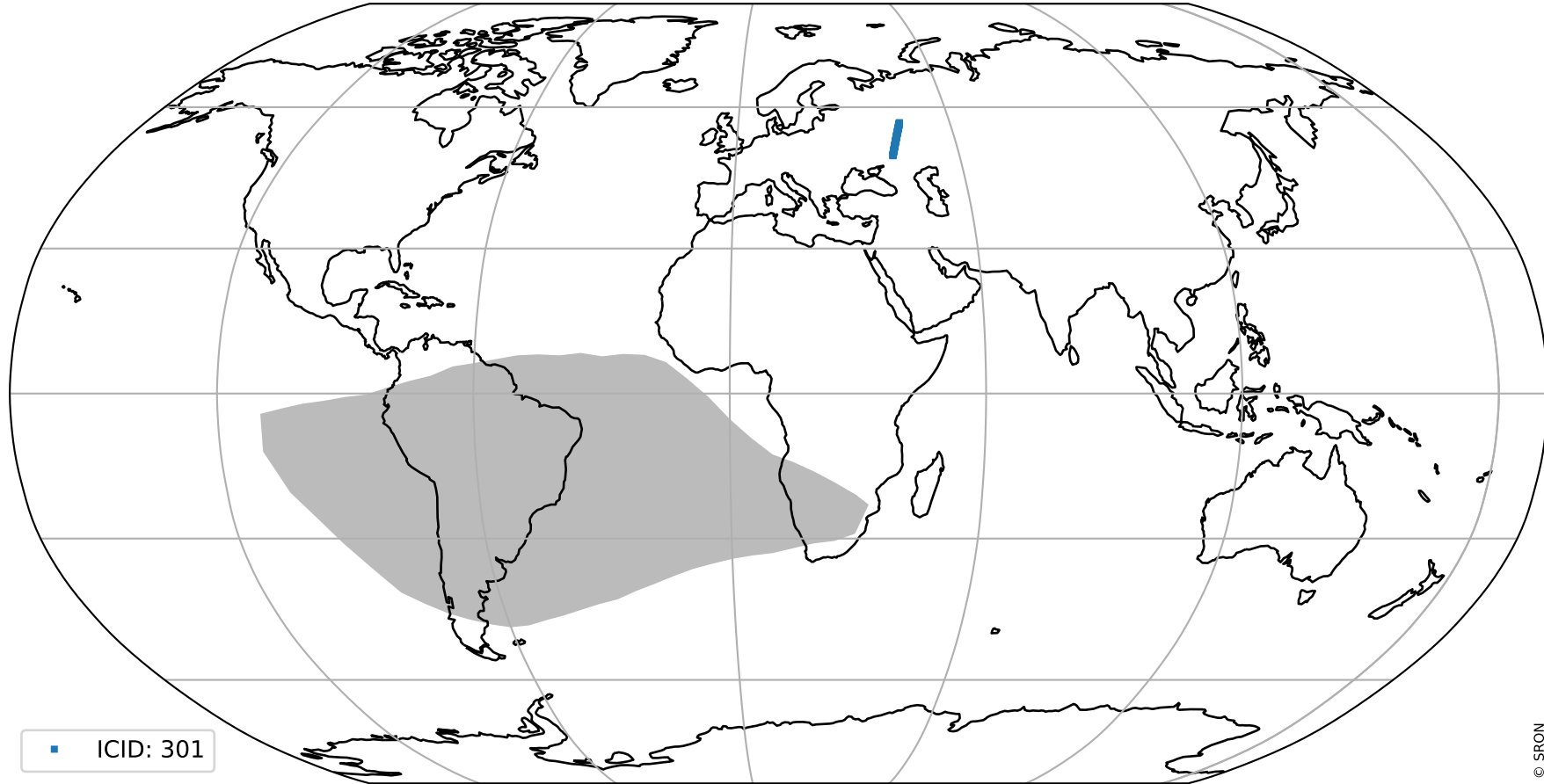
orbits : 19 in [11737, 11782]
coverage : 2020-01-18 / 2020-01-21
created : 2023-08-22T11:59:53

Histograms of pixel-quality



Tropomi SWIR pixel quality (beta nominal) ground-tracks of Sentinel-5P

orbits : 19 in [11737, 11782]
coverage : 2020-01-18 / 2020-01-21
created : 2023-08-22T11:59:54



Tropomi SWIR pixel quality (beta nominal)

orbits : [1867, 11782]
coverage : 2018-02-20 / 2020-01-21
created : 2023-08-22T11:59:54

trend of pixel quality & temperatures

