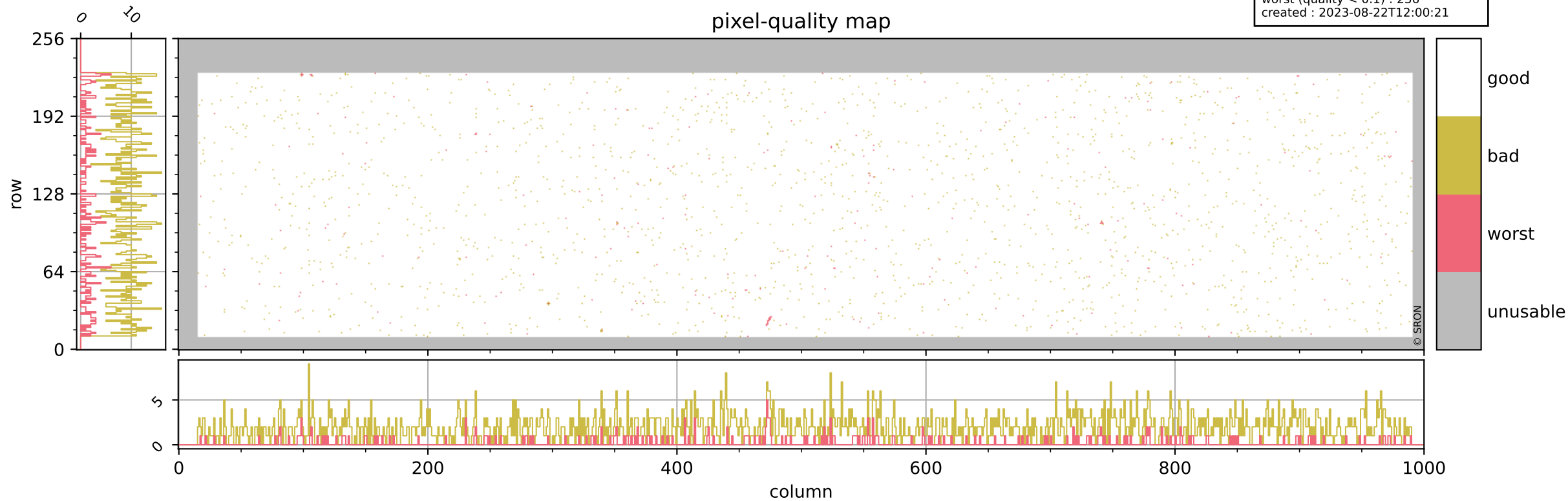


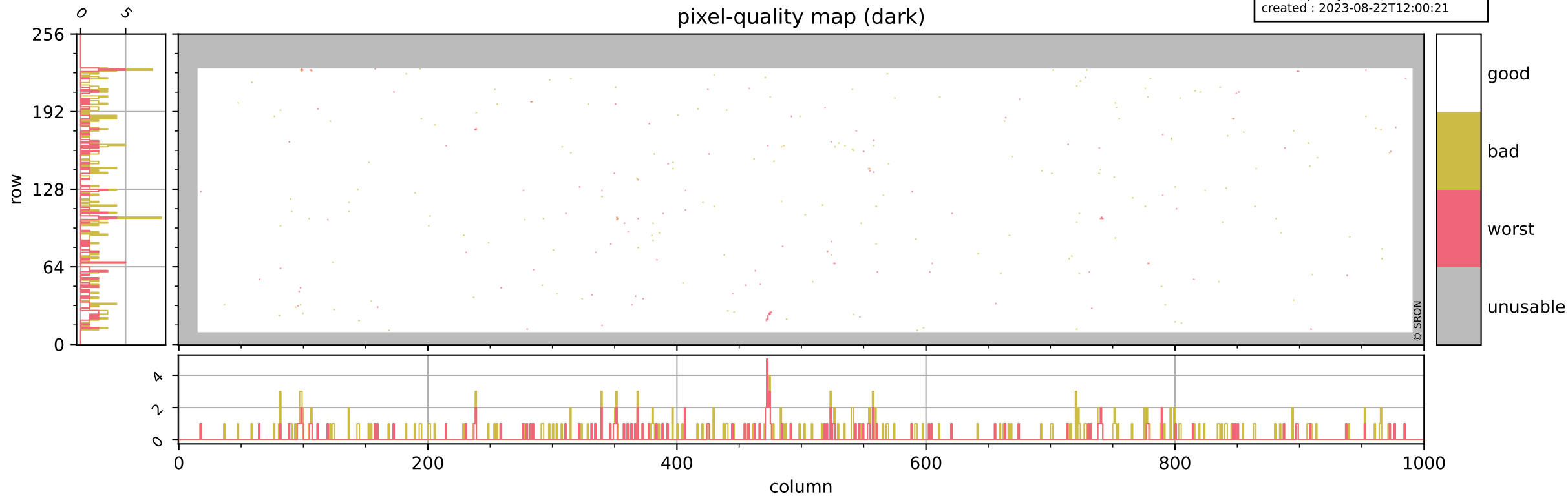
Tropomi SWIR pixel quality (beta nominal)

orbits : 20 in [12232, 12277]
coverage : 2020-02-22 / 2020-02-25
bad (quality < 0.8) : 1977
worst (quality < 0.1) : 236
created : 2023-08-22T12:00:21



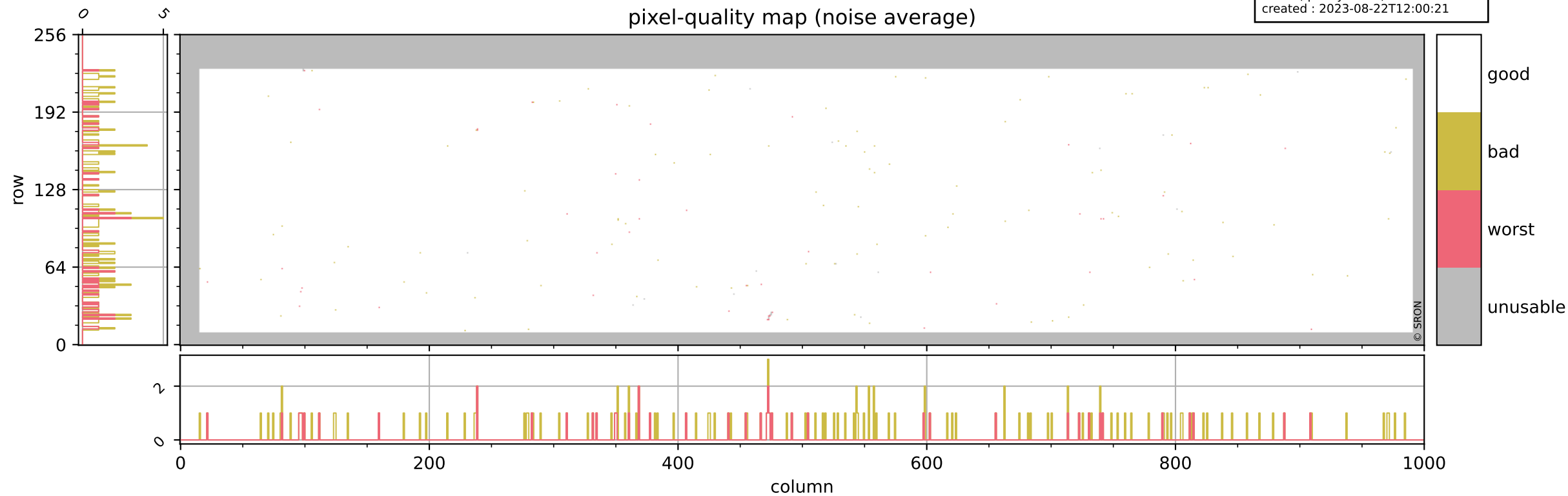
Tropomi SWIR pixel quality (beta nominal)

orbits : 20 in [12232, 12277]
coverage : 2020-02-22 / 2020-02-25
bad (quality < 0.8) : 292
worst (quality < 0.1) : 120
created : 2023-08-22T12:00:21



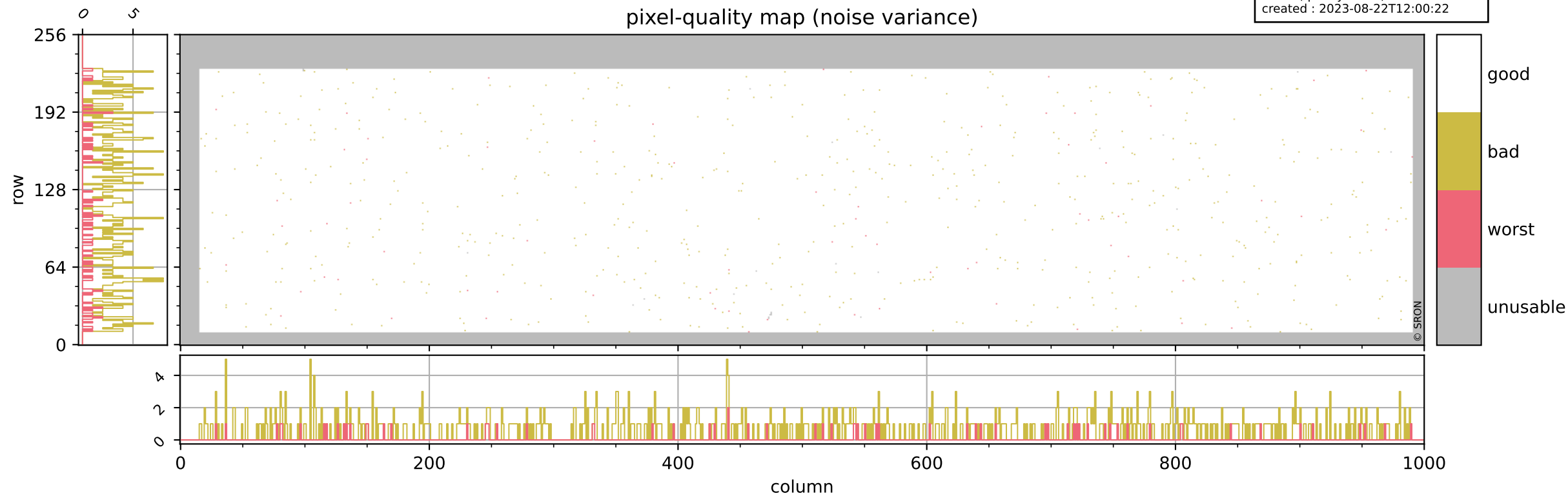
Tropomi SWIR pixel quality (beta nominal)

orbits : 20 in [12232, 12277]
coverage : 2020-02-22 / 2020-02-25
bad (quality < 0.8) : 146
worst (quality < 0.1) : 44
created : 2023-08-22T12:00:21



Tropomi SWIR pixel quality (beta nominal)

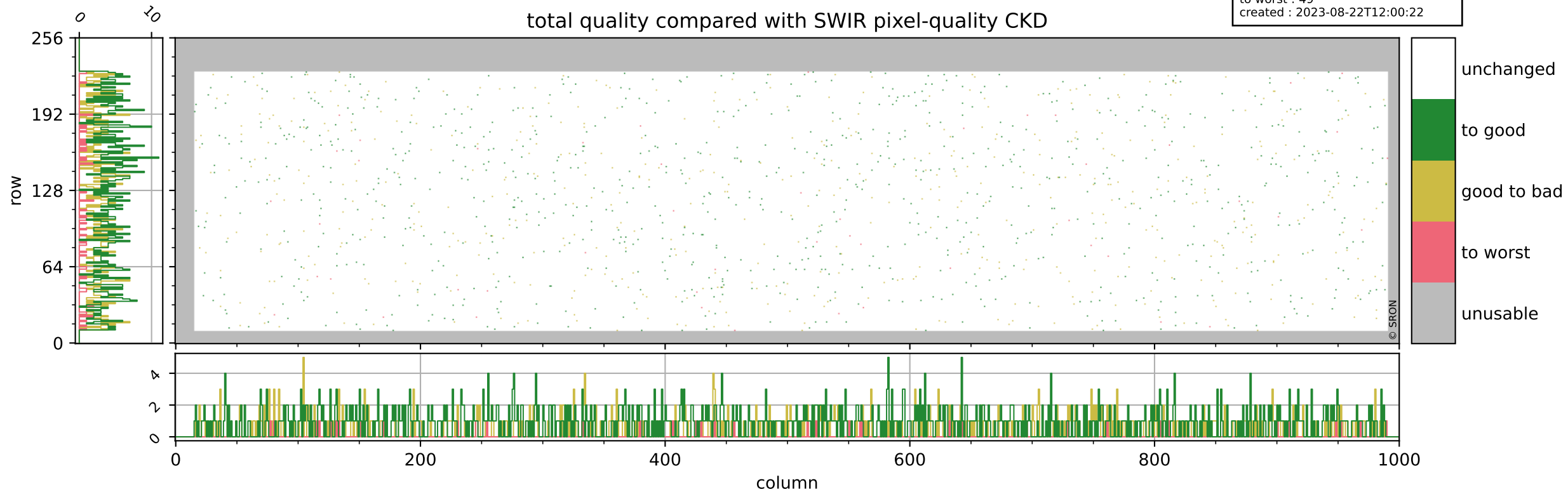
orbits : 20 in [12232, 12277]
coverage : 2020-02-22 / 2020-02-25
bad (quality < 0.8) : 653
worst (quality < 0.1) : 68
created : 2023-08-22T12:00:22



Tropomi SWIR pixel quality (beta nominal)

orbits : 20 in [12232, 12277]
coverage : 2020-02-22 / 2020-02-25
to good : 862
good to bad : 515
to worst : 49
created : 2023-08-22T12:00:22

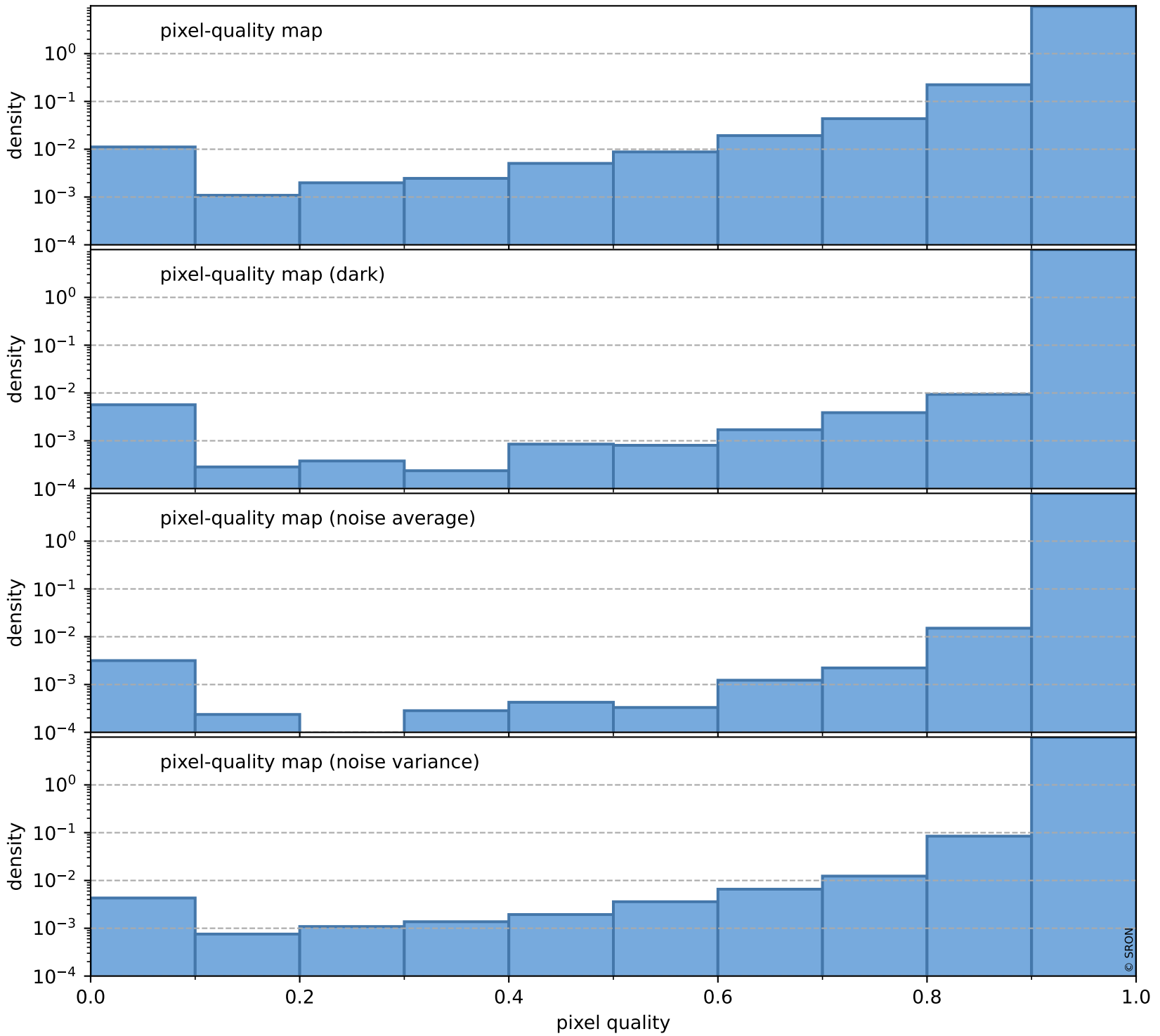
total quality compared with SWIR pixel-quality CKD



Tropomi SWIR pixel quality (beta nominal)

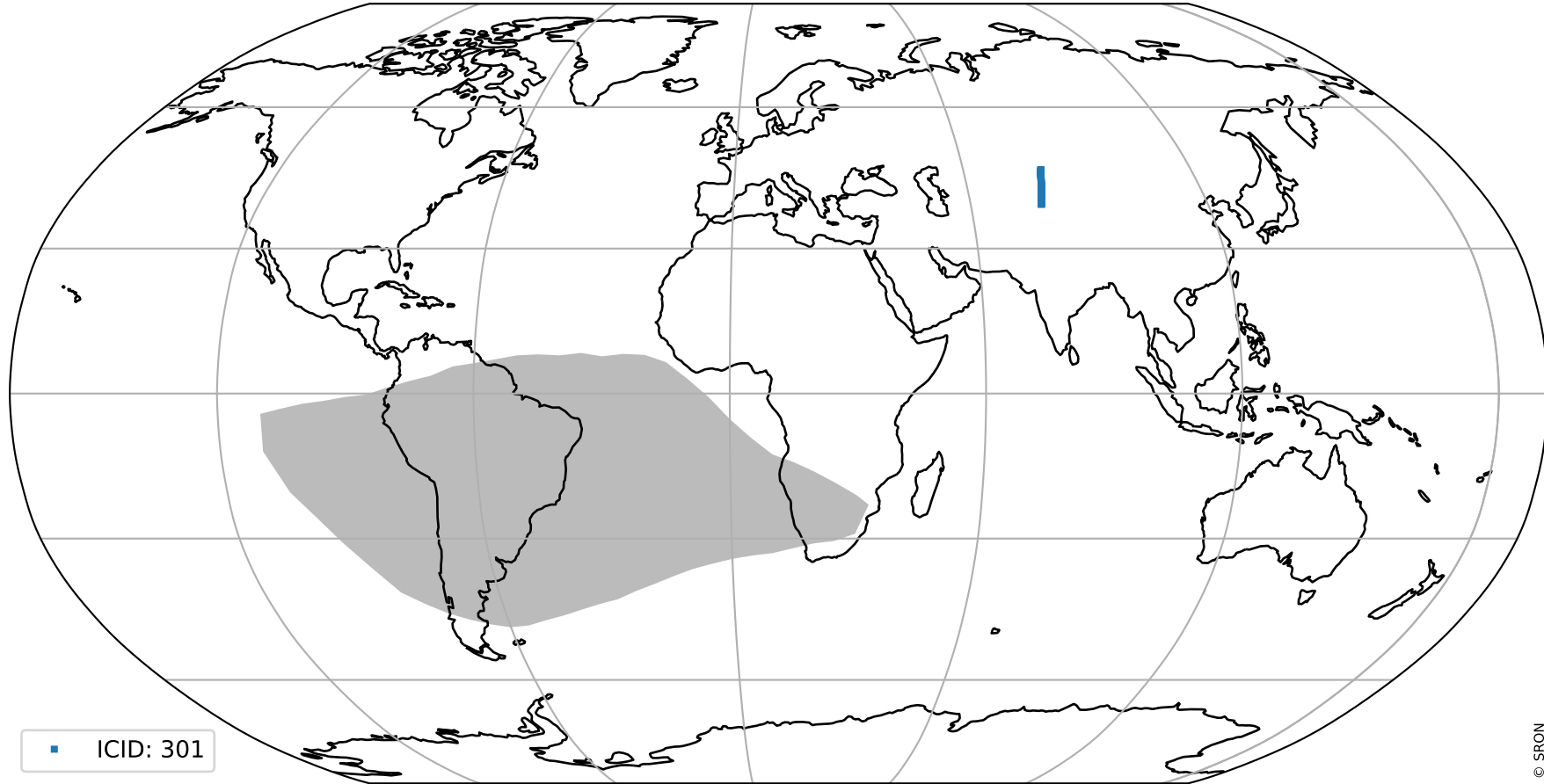
orbits : 20 in [12232, 12277]
coverage : 2020-02-22 / 2020-02-25
created : 2023-08-22T12:00:22

Histograms of pixel-quality



Tropomi SWIR pixel quality (beta nominal) ground-tracks of Sentinel-5P

orbits : 20 in [12232, 12277]
coverage : 2020-02-22 / 2020-02-25
created : 2023-08-22T12:00:23



Tropomi SWIR pixel quality (beta nominal)

orbits : [1867, 12277]
coverage : 2018-02-20 / 2020-02-25
created : 2023-08-22T12:00:23

trend of pixel quality & temperatures

