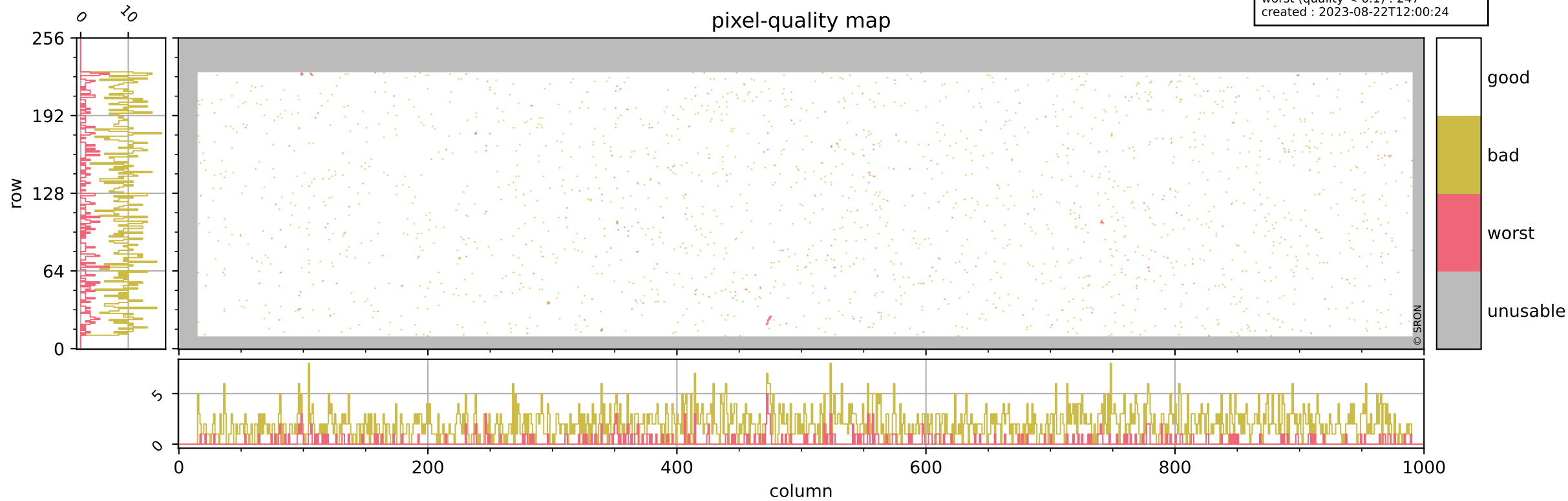


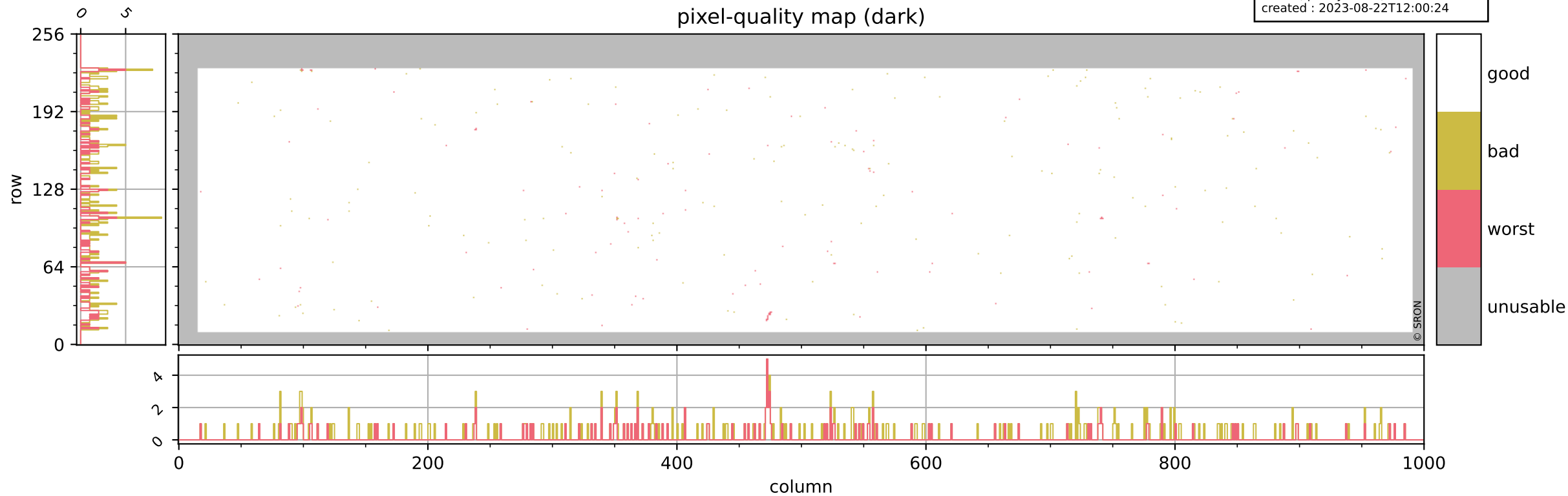
Tropomi SWIR pixel quality (beta nominal)

orbits : 19 in [12277, 12322]
coverage : 2020-02-25 / 2020-02-28
bad (quality < 0.8) : 1992
worst (quality < 0.1) : 247
created : 2023-08-22T12:00:24



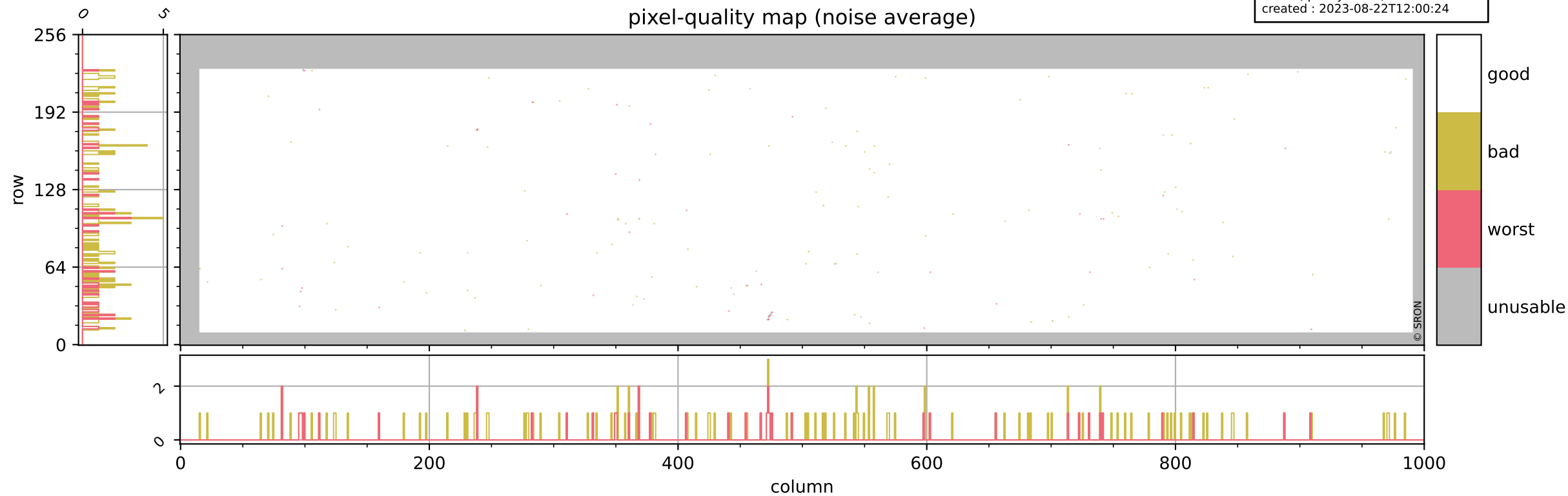
Tropomi SWIR pixel quality (beta nominal)

orbits : 19 in [12277, 12322]
coverage : 2020-02-25 / 2020-02-28
bad (quality < 0.8) : 294
worst (quality < 0.1) : 120
created : 2023-08-22T12:00:24



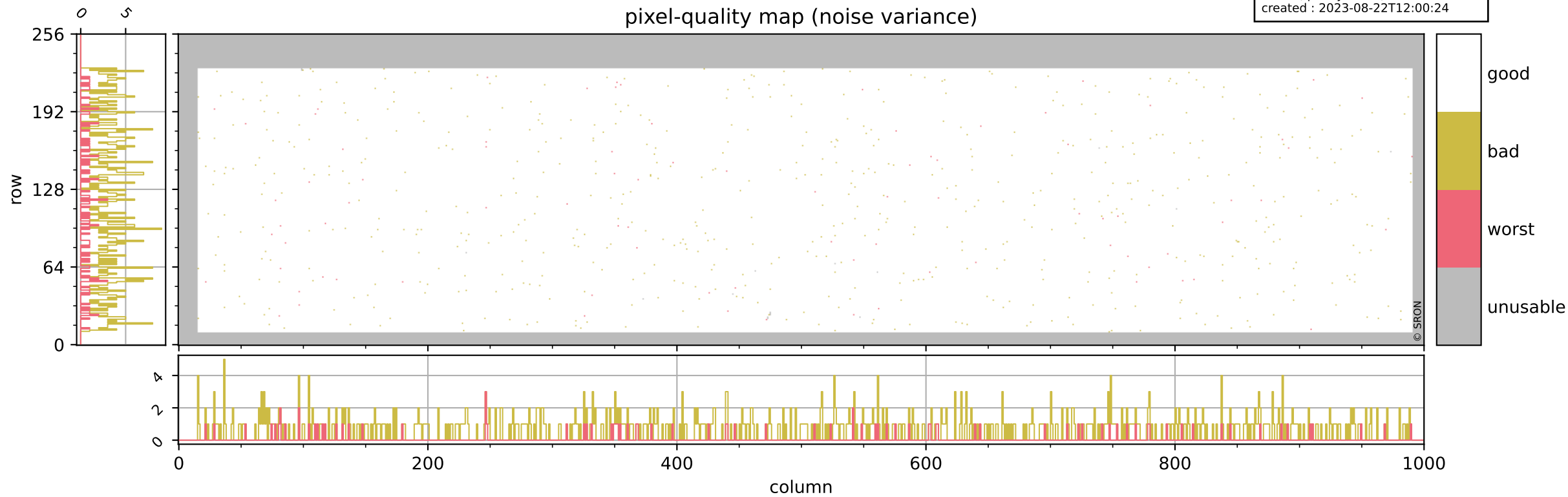
Tropomi SWIR pixel quality (beta nominal)

orbits : 19 in [12277, 12322]
coverage : 2020-02-25 / 2020-02-28
bad (quality < 0.8) : 143
worst (quality < 0.1) : 41
created : 2023-08-22T12:00:24



Tropomi SWIR pixel quality (beta nominal)

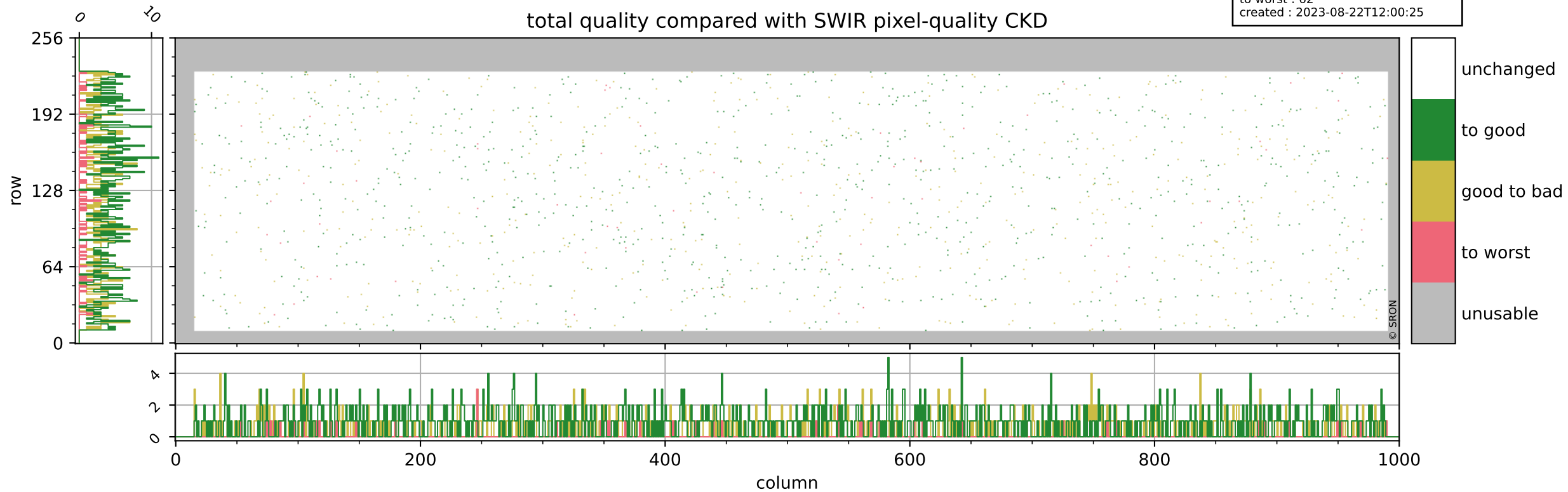
orbits : 19 in [12277, 12322]
coverage : 2020-02-25 / 2020-02-28
bad (quality < 0.8) : 674
worst (quality < 0.1) : 85
created : 2023-08-22T12:00:24



Tropomi SWIR pixel quality (beta nominal)

orbits : 19 in [12277, 12322]
coverage : 2020-02-25 / 2020-02-28
to good : 869
good to bad : 525
to worst : 62
created : 2023-08-22T12:00:25

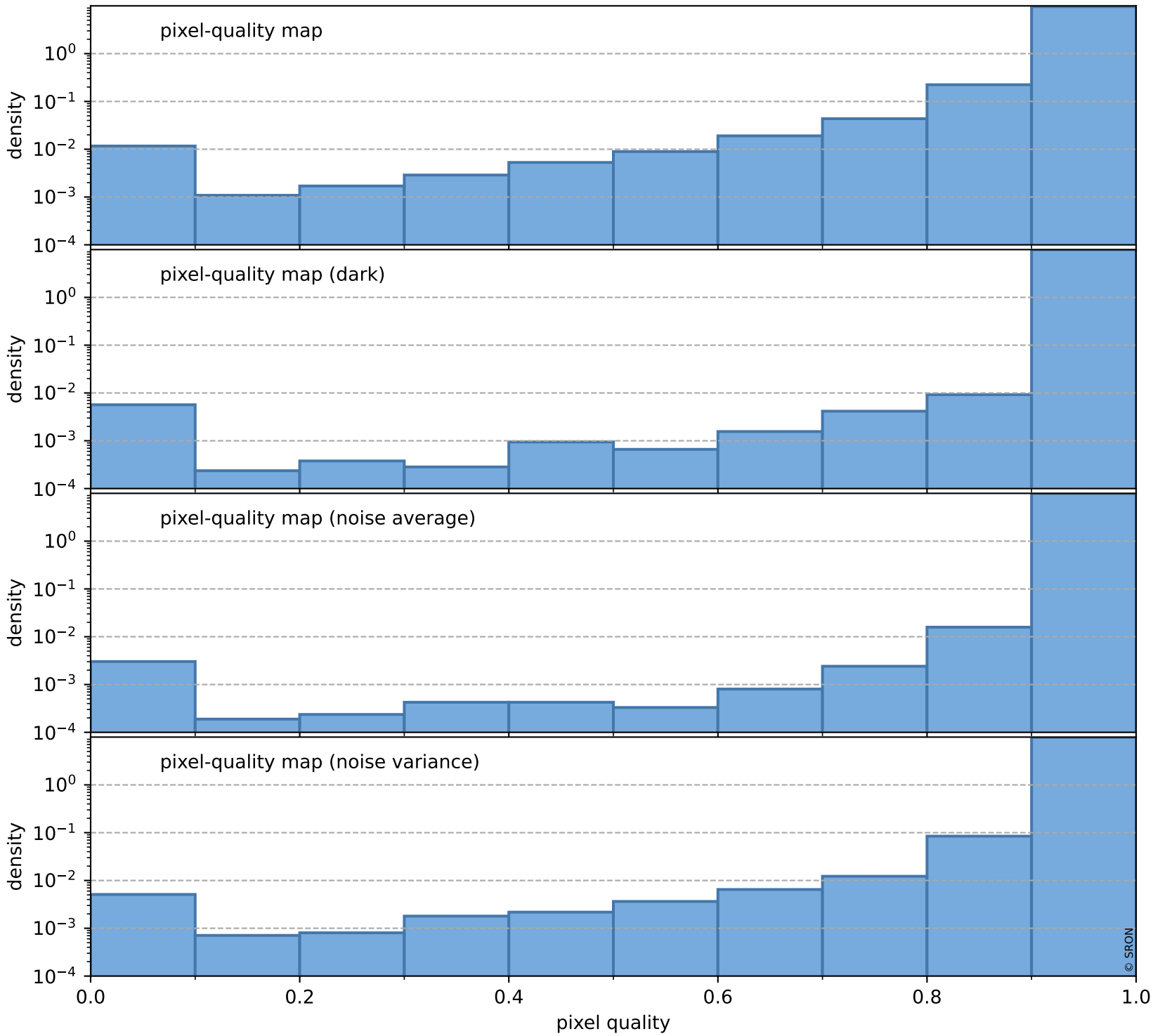
total quality compared with SWIR pixel-quality CKD



Tropomi SWIR pixel quality (beta nominal)

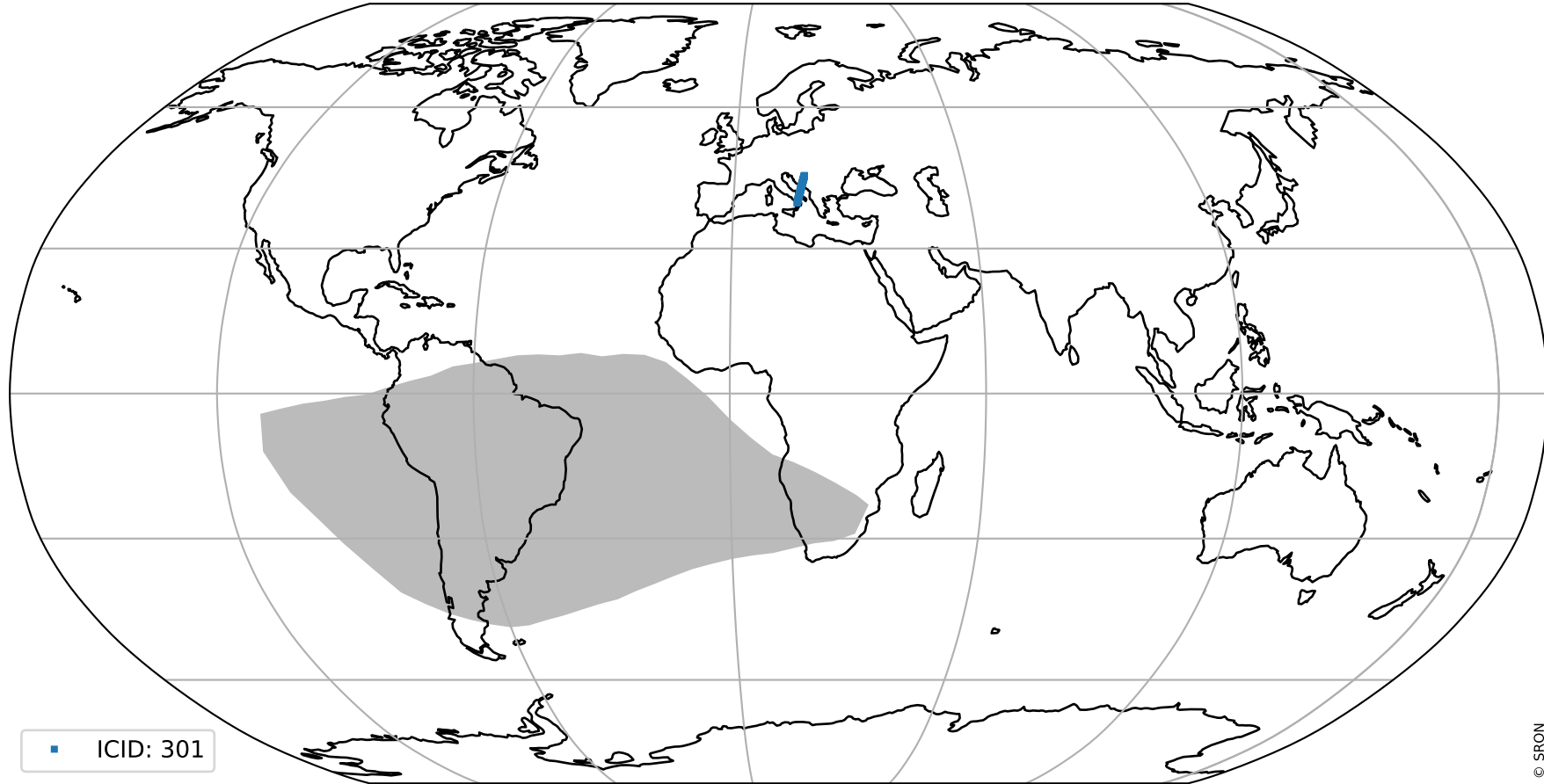
orbits : 19 in [12277, 12322]
coverage : 2020-02-25 / 2020-02-28
created : 2023-08-22T12:00:25

Histograms of pixel-quality



Tropomi SWIR pixel quality (beta nominal) ground-tracks of Sentinel-5P

orbits : 19 in [12277, 12322]
coverage : 2020-02-25 / 2020-02-28
created : 2023-08-22T12:00:25



Tropomi SWIR pixel quality (beta nominal)

orbits : [1867, 12322]
coverage : 2018-02-20 / 2020-02-28
created : 2023-08-22T12:00:26

trend of pixel quality & temperatures

