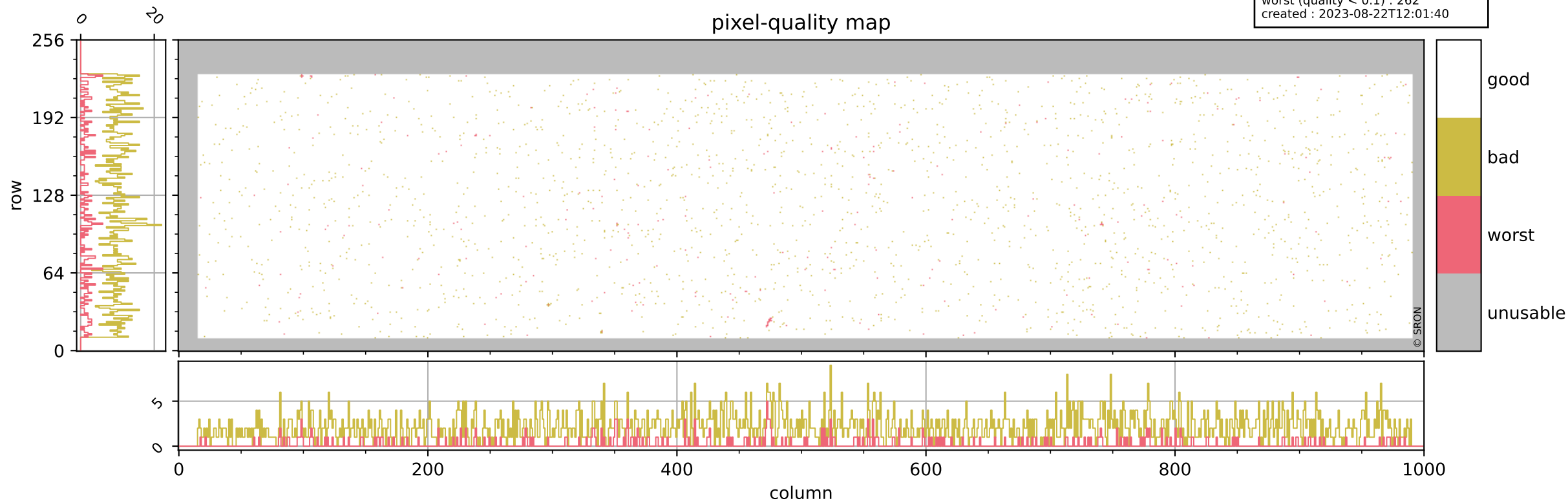


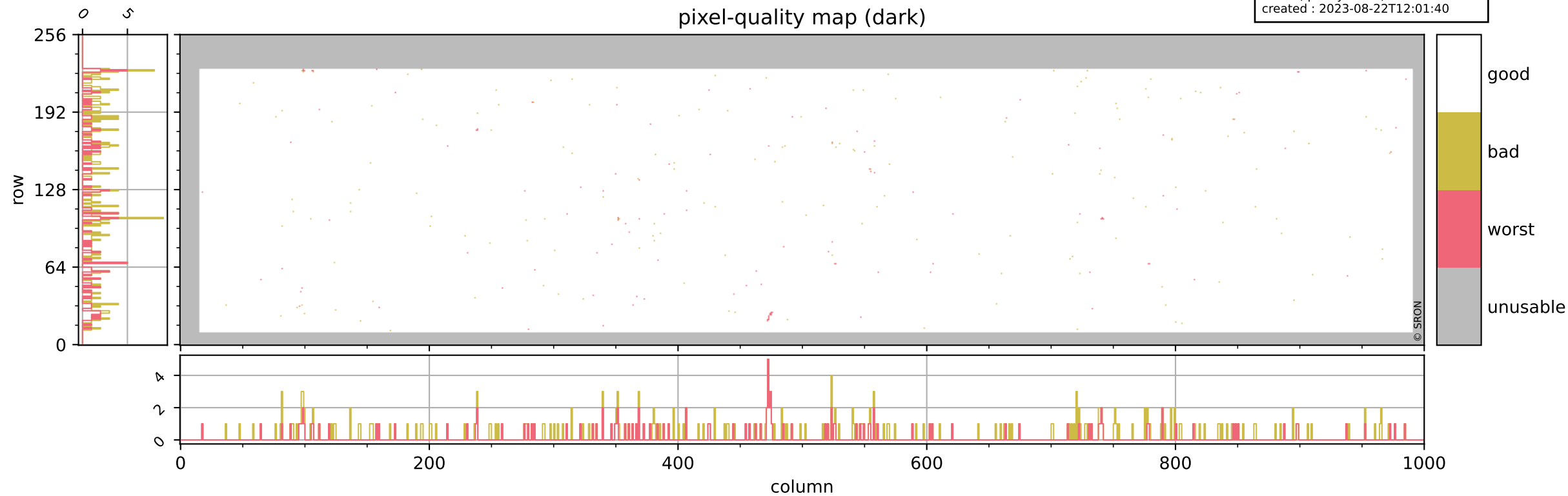
Tropomi SWIR pixel quality (beta nominal)

orbits : 20 in [13582, 13627]
coverage : 2020-05-27 / 2020-05-30
bad (quality < 0.8) : 2157
worst (quality < 0.1) : 262
created : 2023-08-22T12:01:40



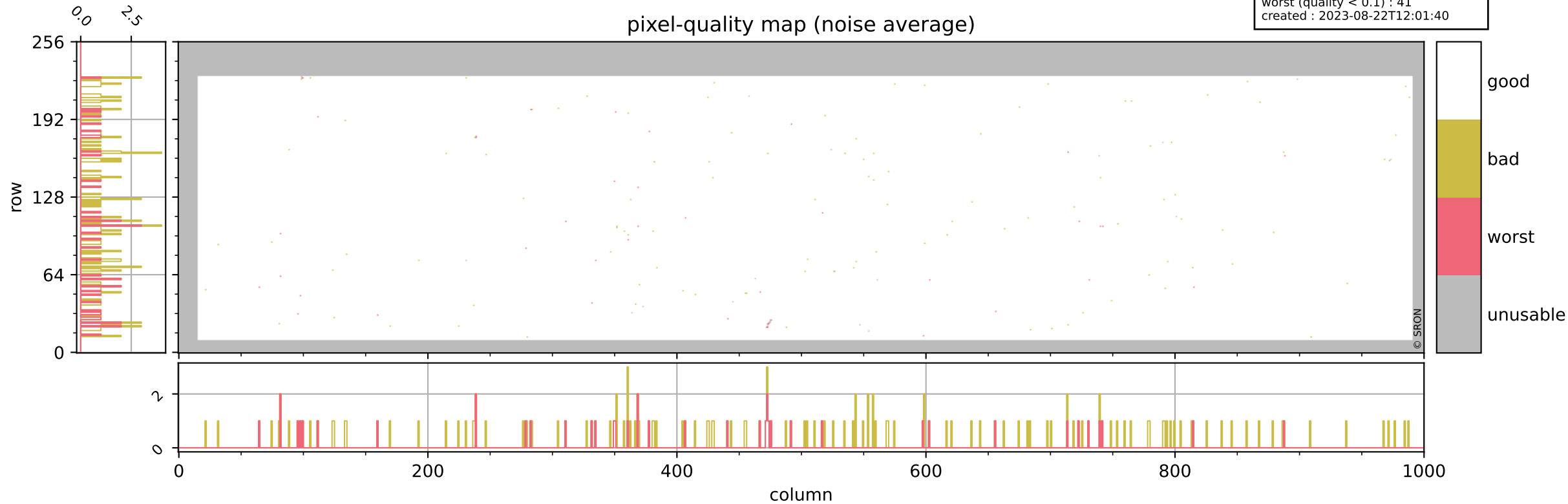
Tropomi SWIR pixel quality (beta nominal)

orbits : 20 in [13582, 13627]
coverage : 2020-05-27 / 2020-05-30
bad (quality < 0.8) : 287
worst (quality < 0.1) : 119
created : 2023-08-22T12:01:40



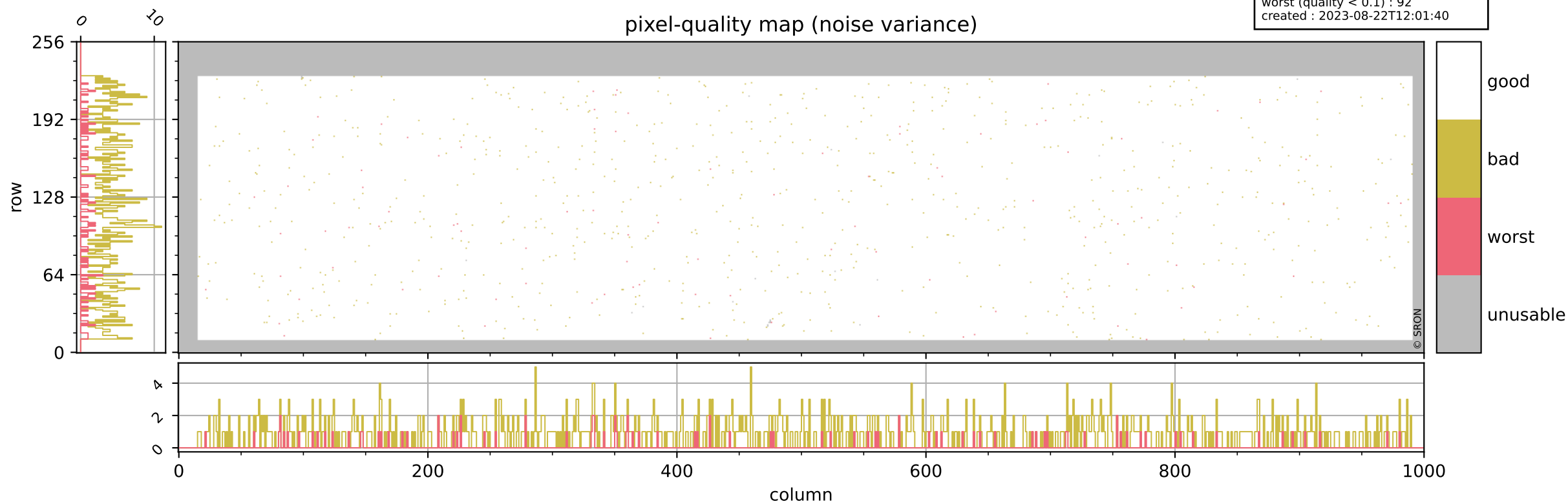
Tropomi SWIR pixel quality (beta nominal)

orbits : 20 in [13582, 13627]
coverage : 2020-05-27 / 2020-05-30
bad (quality < 0.8) : 149
worst (quality < 0.1) : 41
created : 2023-08-22T12:01:40



Tropomi SWIR pixel quality (beta nominal)

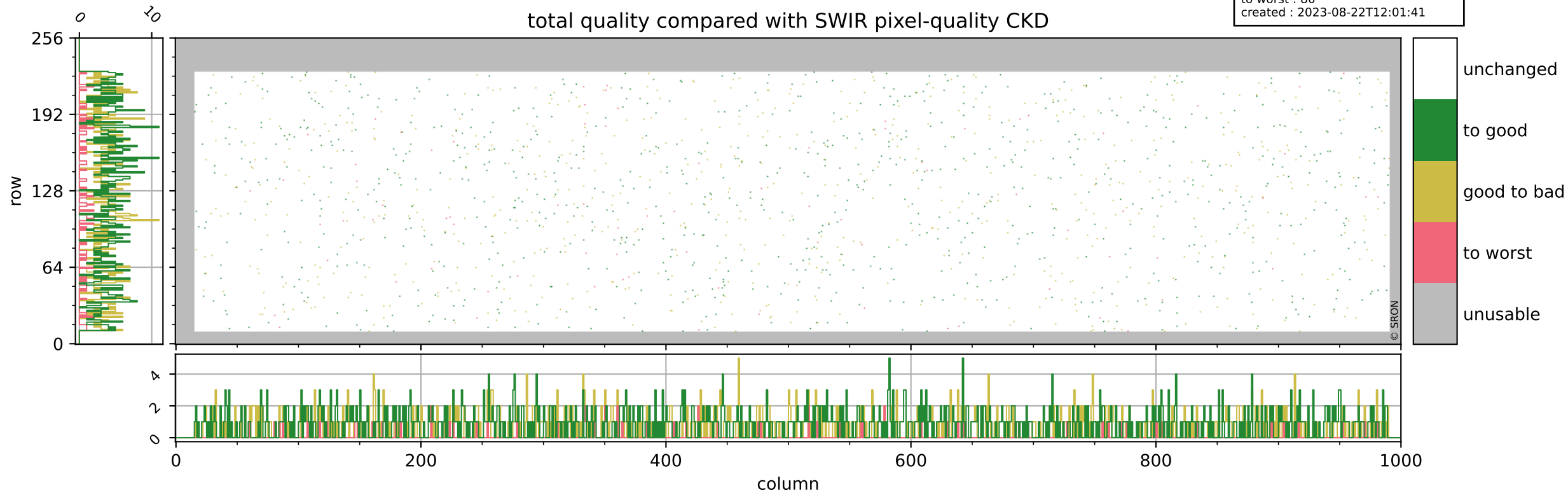
orbits : 20 in [13582, 13627]
coverage : 2020-05-27 / 2020-05-30
bad (quality < 0.8) : 849
worst (quality < 0.1) : 92
created : 2023-08-22T12:01:40



Tropomi SWIR pixel quality (beta nominal)

orbits : 20 in [13582, 13627]
coverage : 2020-05-27 / 2020-05-30
to good : 858
good to bad : 660
to worst : 80
created : 2023-08-22T12:01:41

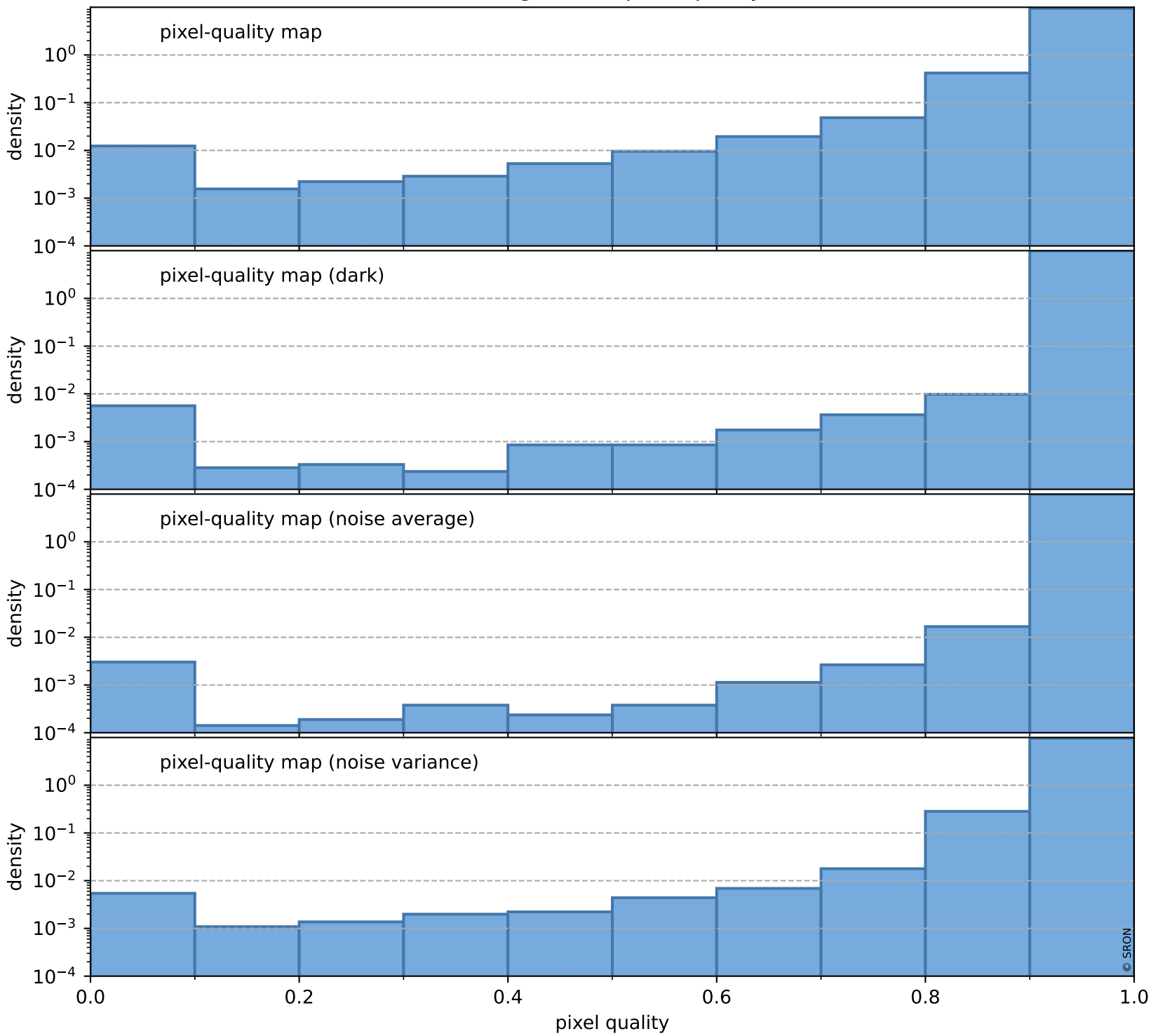
total quality compared with SWIR pixel-quality CKD



Tropomi SWIR pixel quality (beta nominal)

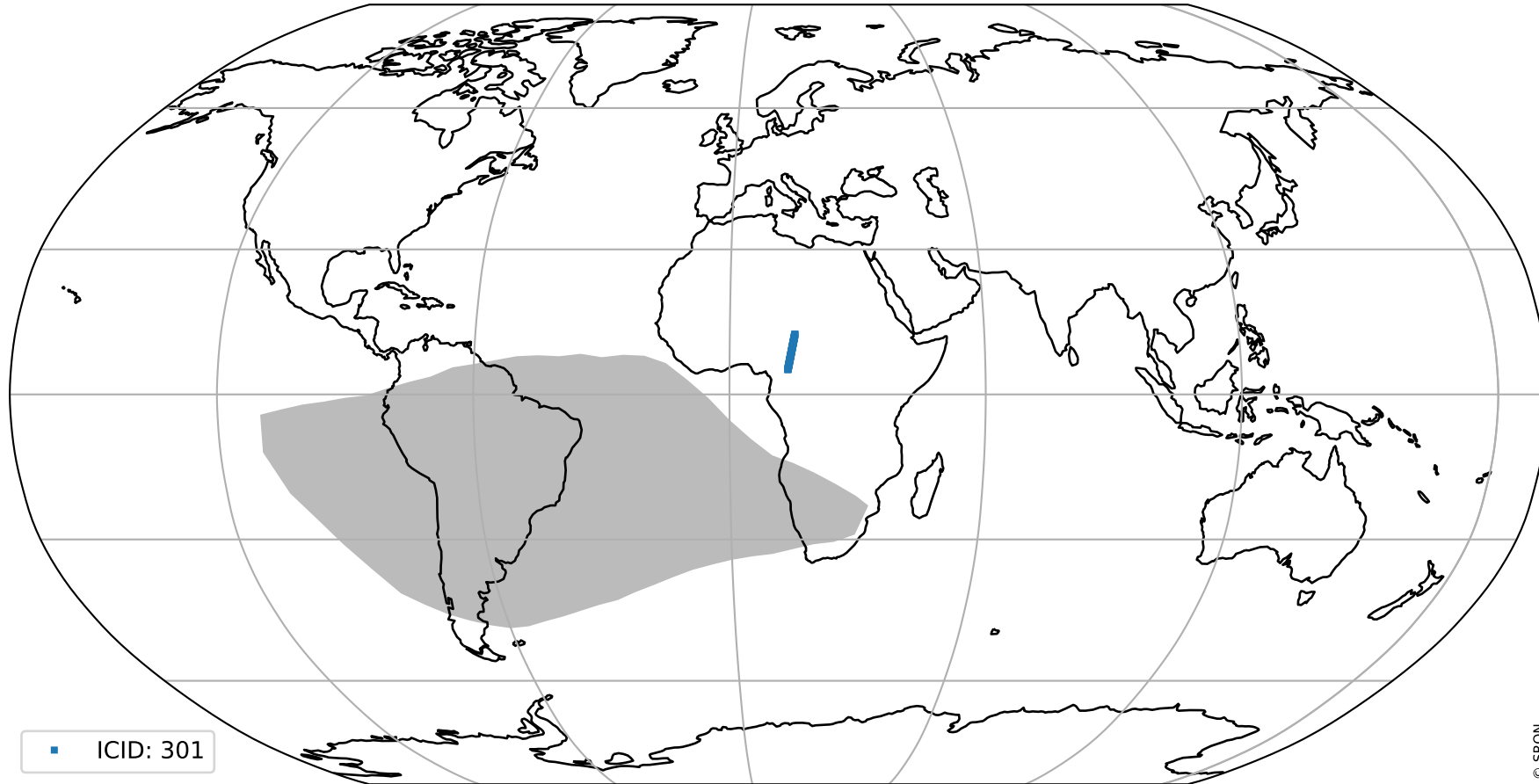
orbits : 20 in [13582, 13627]
coverage : 2020-05-27 / 2020-05-30
created : 2023-08-22T12:01:41

Histograms of pixel-quality



Tropomi SWIR pixel quality (beta nominal) ground-tracks of Sentinel-5P

orbits : 20 in [13582, 13627]
coverage : 2020-05-27 / 2020-05-30
created : 2023-08-22T12:01:41



Tropomi SWIR pixel quality (beta nominal)

orbits : [1867, 13627]
coverage : 2018-02-20 / 2020-05-30
created : 2023-08-22T12:01:42

trend of pixel quality & temperatures

