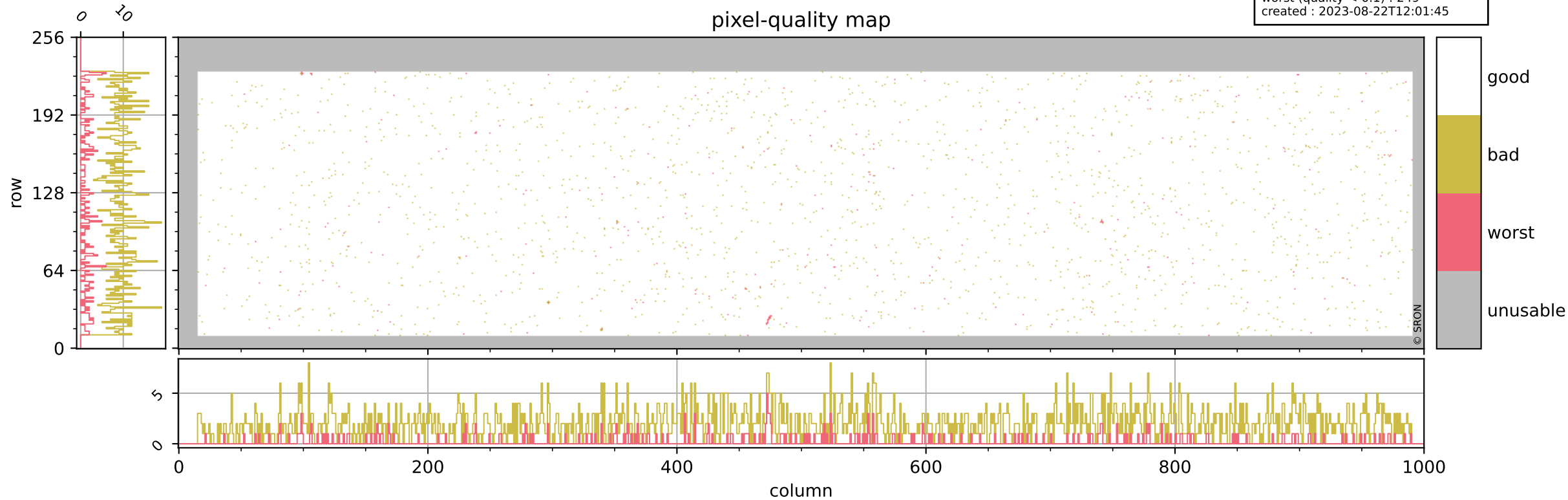


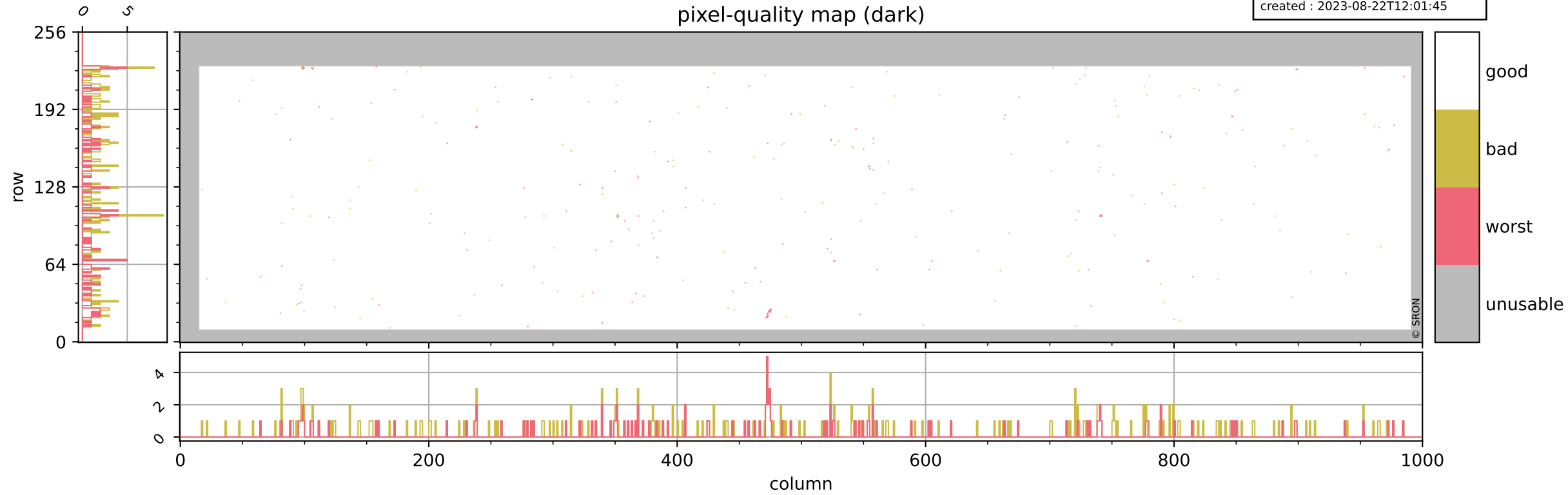
Tropomi SWIR pixel quality (beta nominal)

orbits : 20 in [13672, 13717]
coverage : 2020-06-03 / 2020-06-06
bad (quality < 0.8) : 2044
worst (quality < 0.1) : 249
created : 2023-08-22T12:01:45



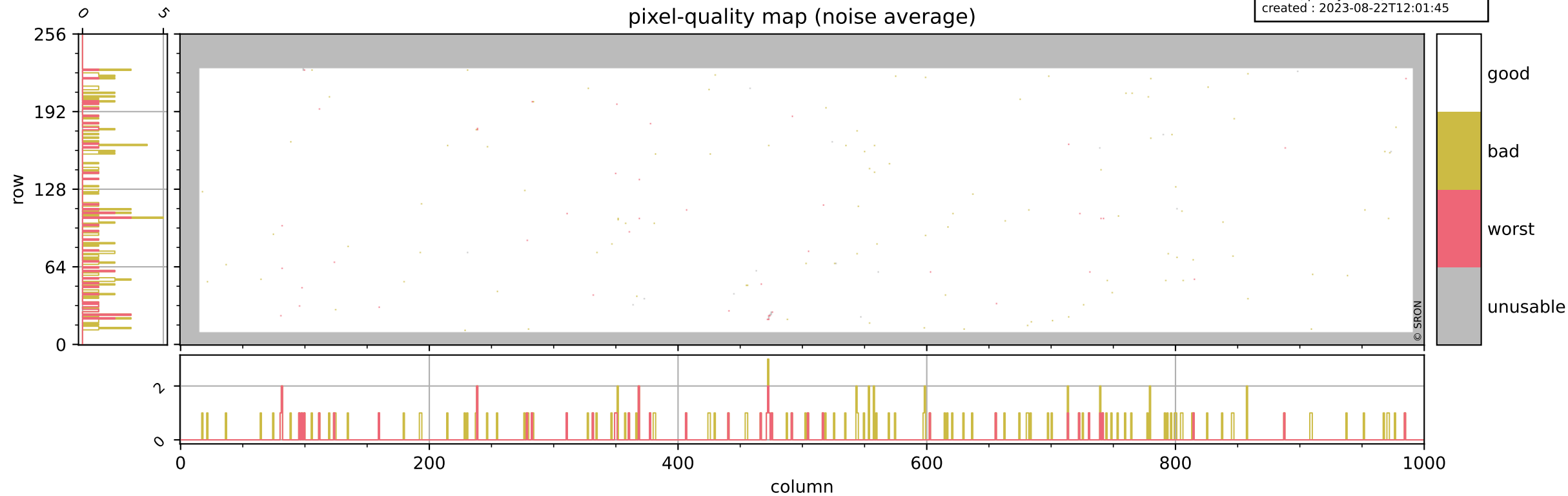
Tropomi SWIR pixel quality (beta nominal)

orbits : 20 in [13672, 13717]
coverage : 2020-06-03 / 2020-06-06
bad (quality < 0.8) : 285
worst (quality < 0.1) : 118
created : 2023-08-22T12:01:45



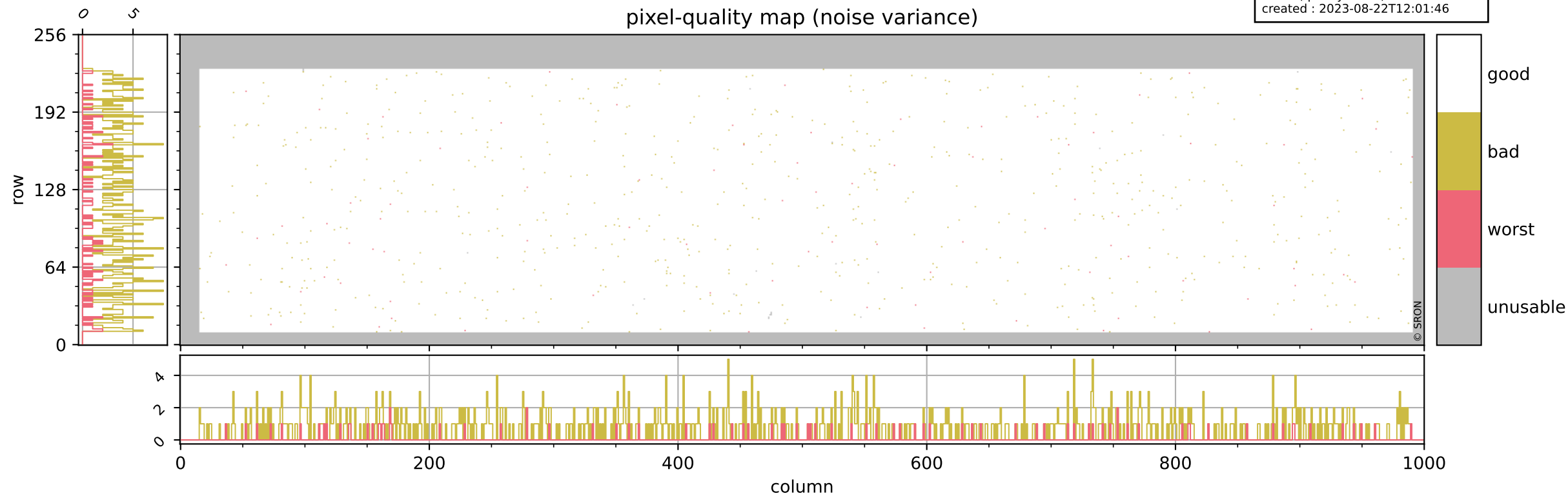
Tropomi SWIR pixel quality (beta nominal)

orbits : 20 in [13672, 13717]
coverage : 2020-06-03 / 2020-06-06
bad (quality < 0.8) : 143
worst (quality < 0.1) : 42
created : 2023-08-22T12:01:45



Tropomi SWIR pixel quality (beta nominal)

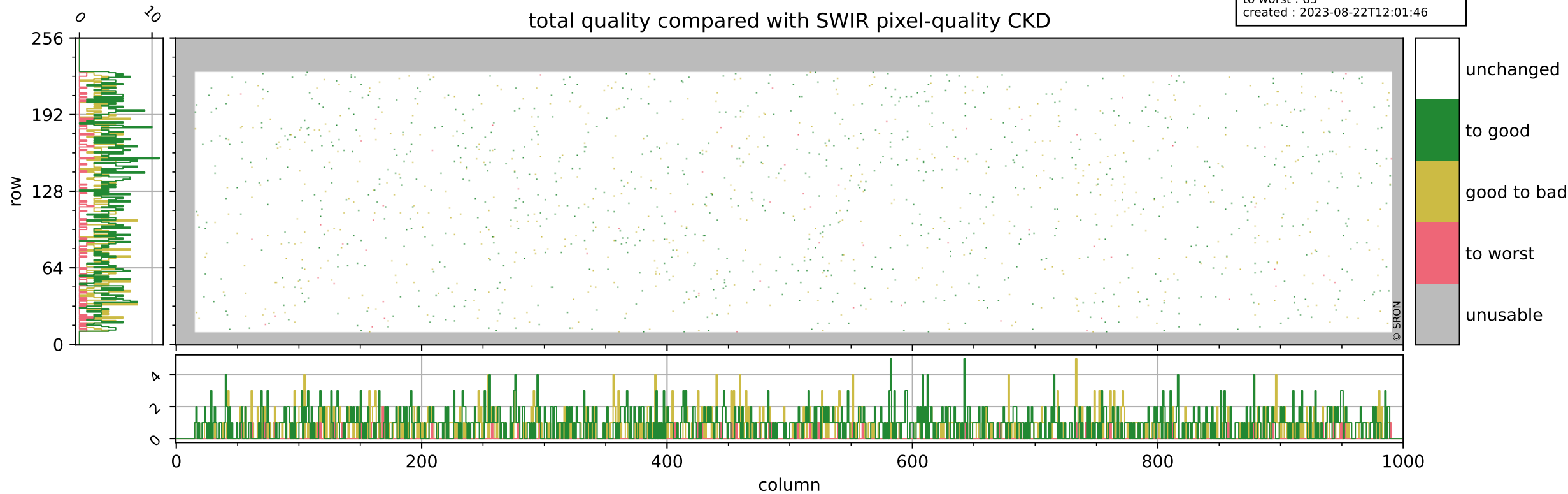
orbits : 20 in [13672, 13717]
coverage : 2020-06-03 / 2020-06-06
bad (quality < 0.8) : 735
worst (quality < 0.1) : 84
created : 2023-08-22T12:01:46



Tropomi SWIR pixel quality (beta nominal)

orbits : 20 in [13672, 13717]
coverage : 2020-06-03 / 2020-06-06
to good : 862
good to bad : 565
to worst : 65
created : 2023-08-22T12:01:46

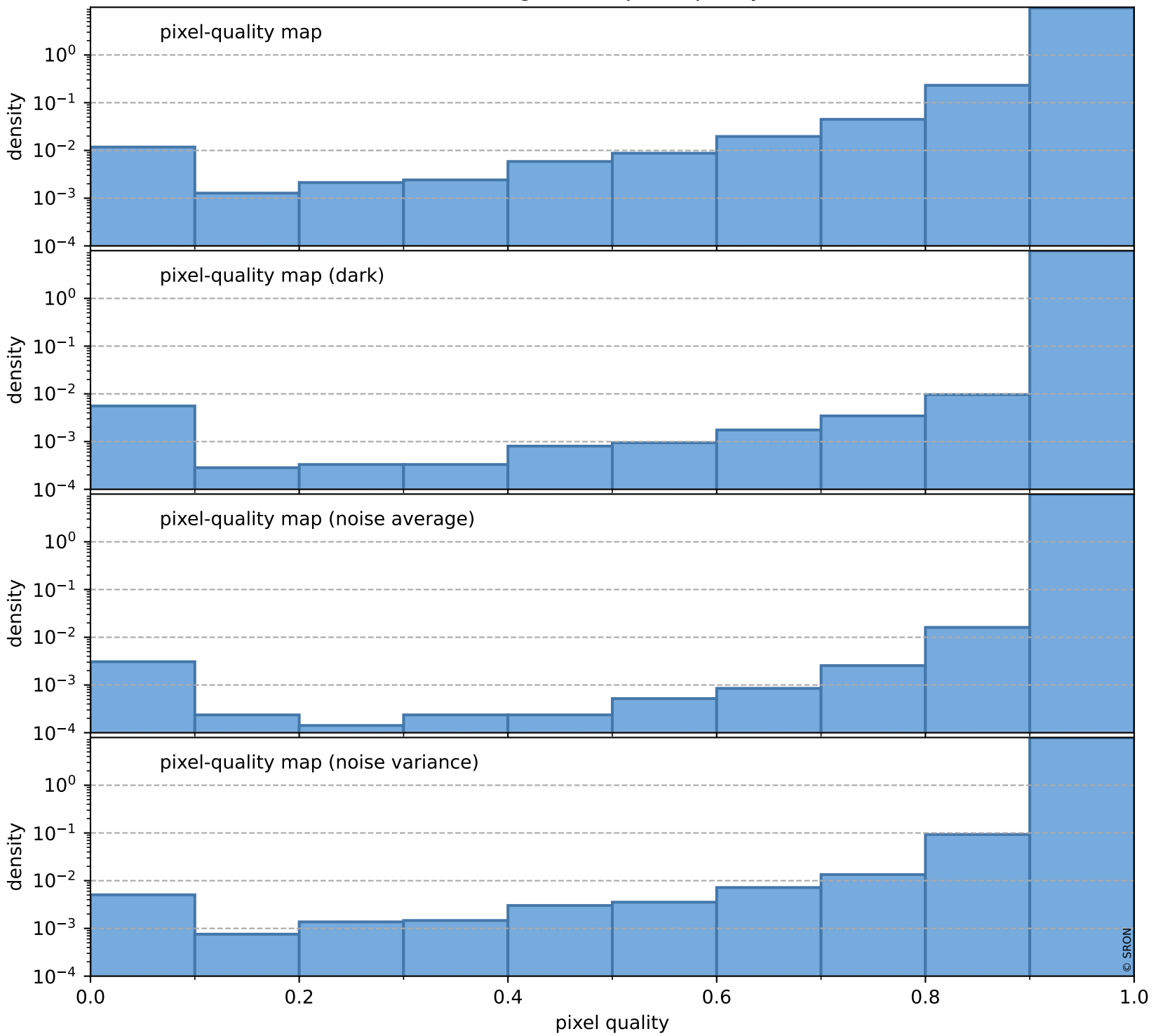
total quality compared with SWIR pixel-quality CKD



Tropomi SWIR pixel quality (beta nominal)

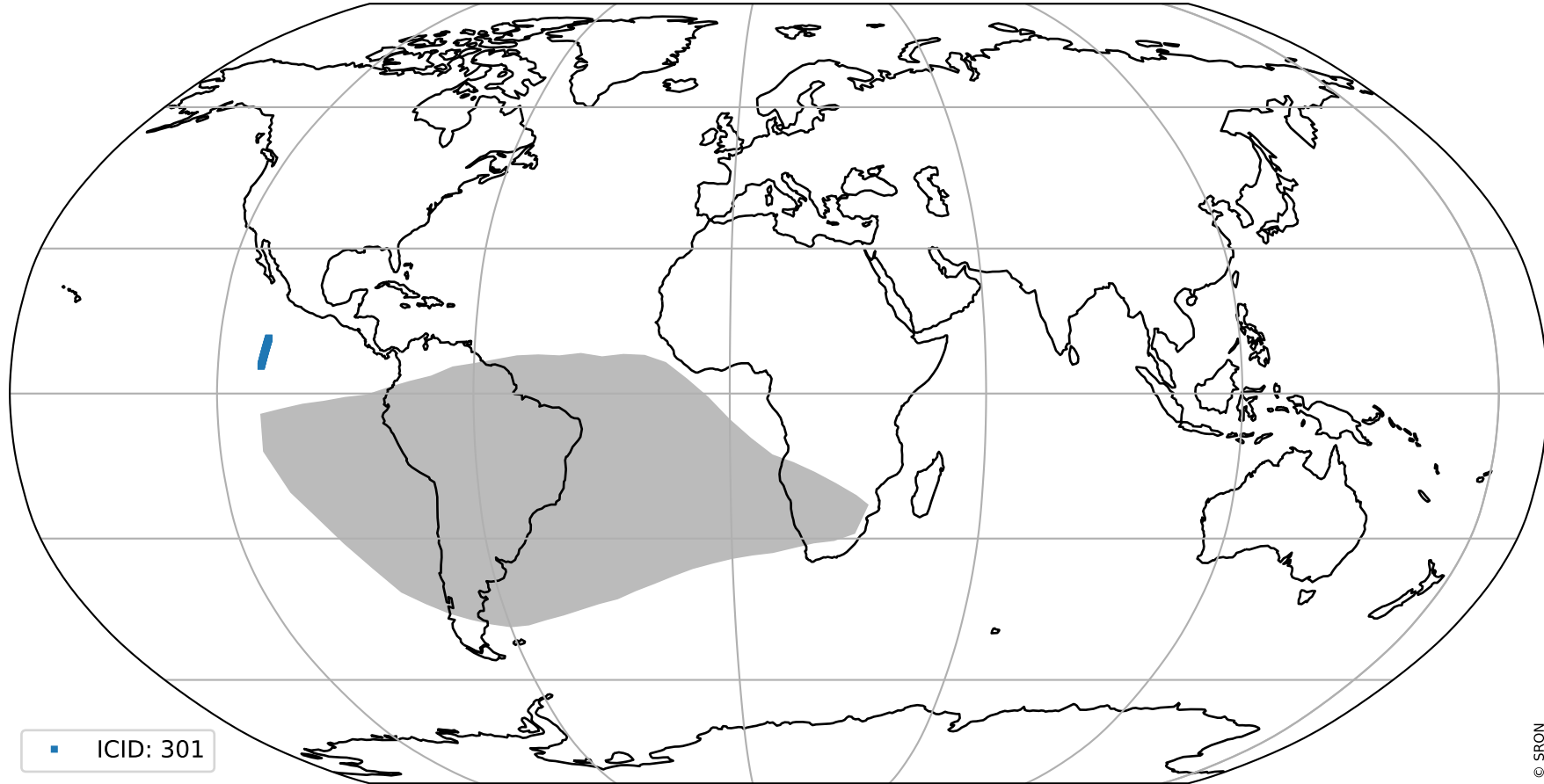
orbits : 20 in [13672, 13717]
coverage : 2020-06-03 / 2020-06-06
created : 2023-08-22T12:01:46

Histograms of pixel-quality



Tropomi SWIR pixel quality (beta nominal) ground-tracks of Sentinel-5P

orbits : 20 in [13672, 13717]
coverage : 2020-06-03 / 2020-06-06
created : 2023-08-22T12:01:47



Tropomi SWIR pixel quality (beta nominal)

orbits : [1867, 13717]
coverage : 2018-02-20 / 2020-06-06
created : 2023-08-22T12:01:47

trend of pixel quality & temperatures

