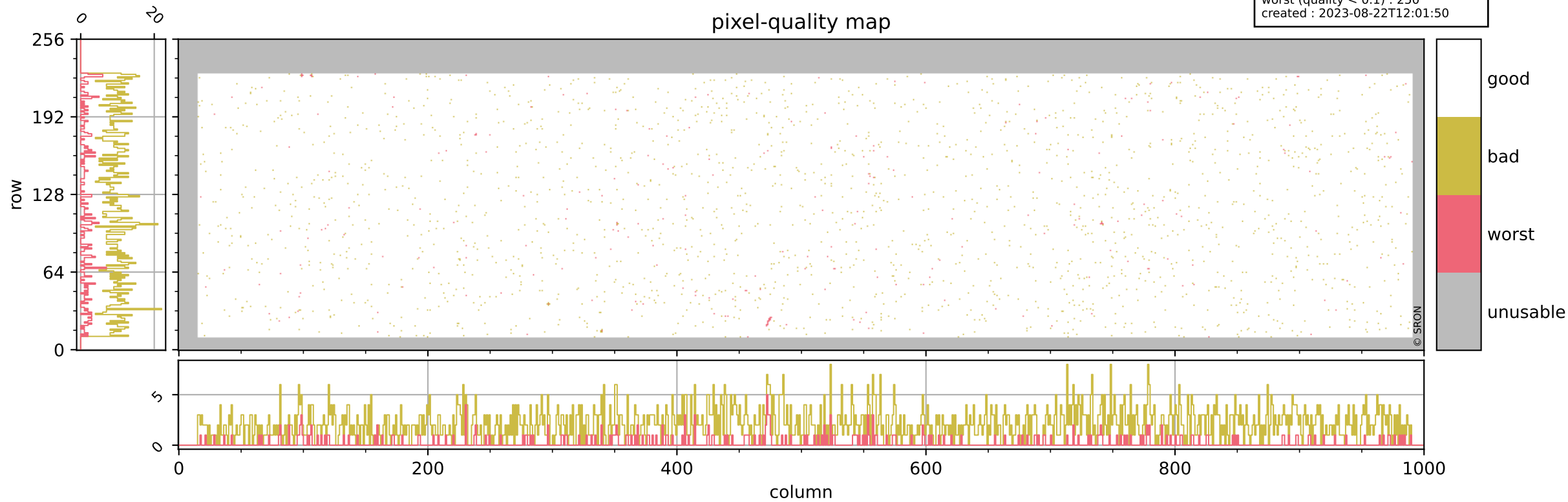


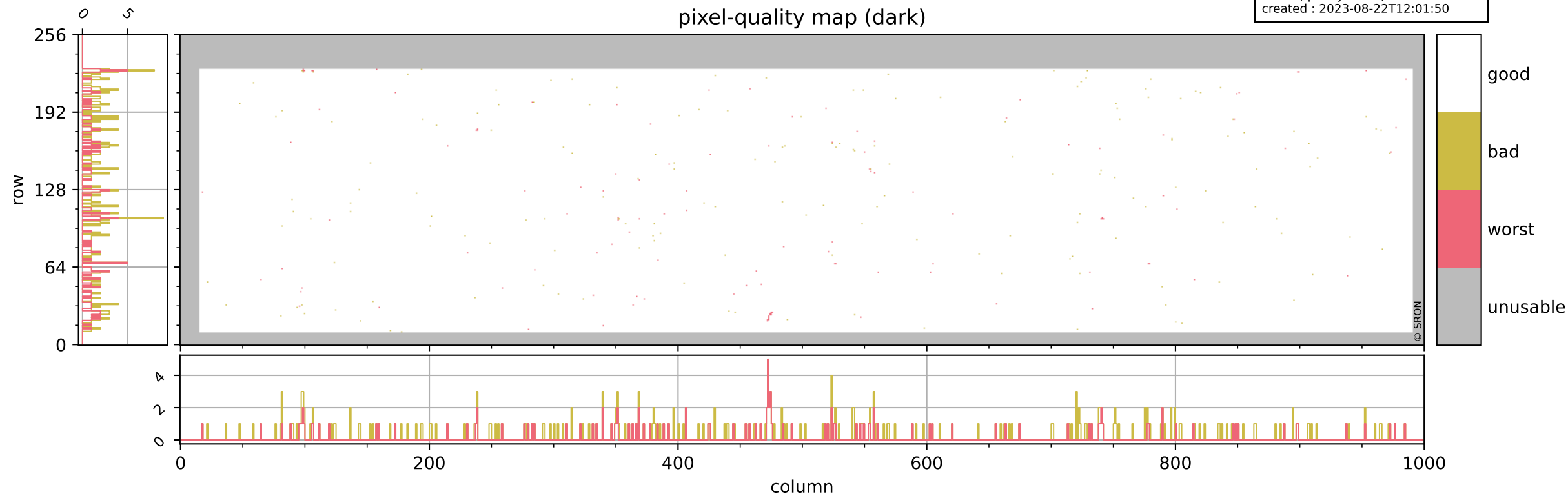
Tropomi SWIR pixel quality (beta nominal)

orbits : 20 in [13762, 13807]
coverage : 2020-06-09 / 2020-06-12
bad (quality < 0.8) : 2113
worst (quality < 0.1) : 250
created : 2023-08-22T12:01:50



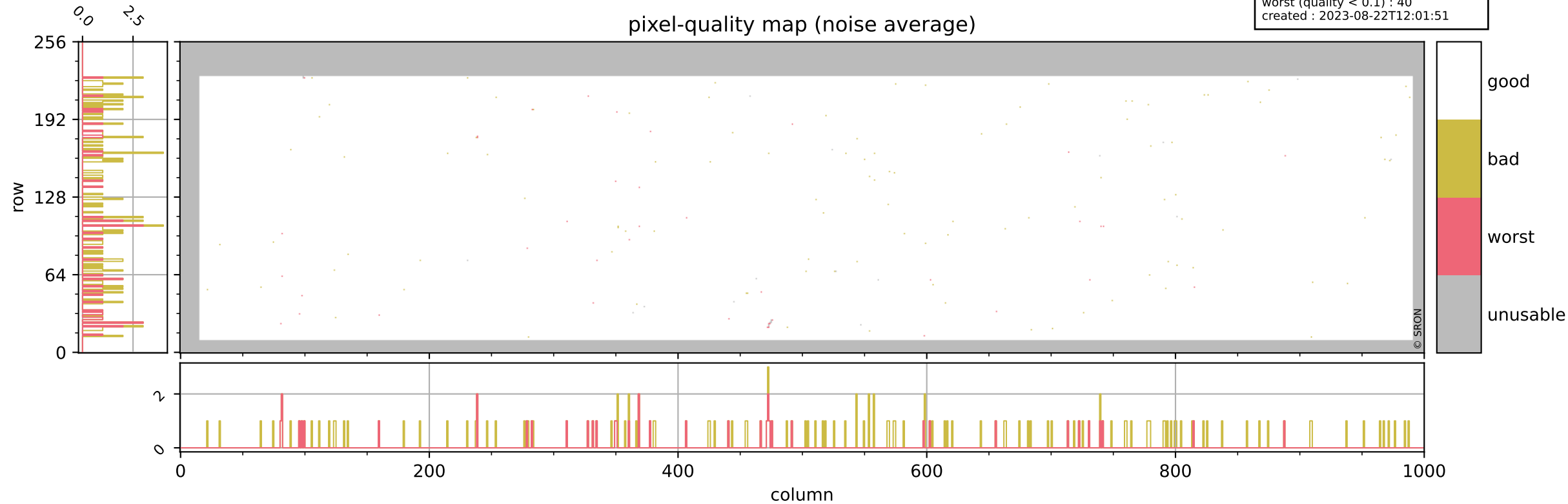
Tropomi SWIR pixel quality (beta nominal)

orbits : 20 in [13762, 13807]
coverage : 2020-06-09 / 2020-06-12
bad (quality < 0.8) : 288
worst (quality < 0.1) : 118
created : 2023-08-22T12:01:50



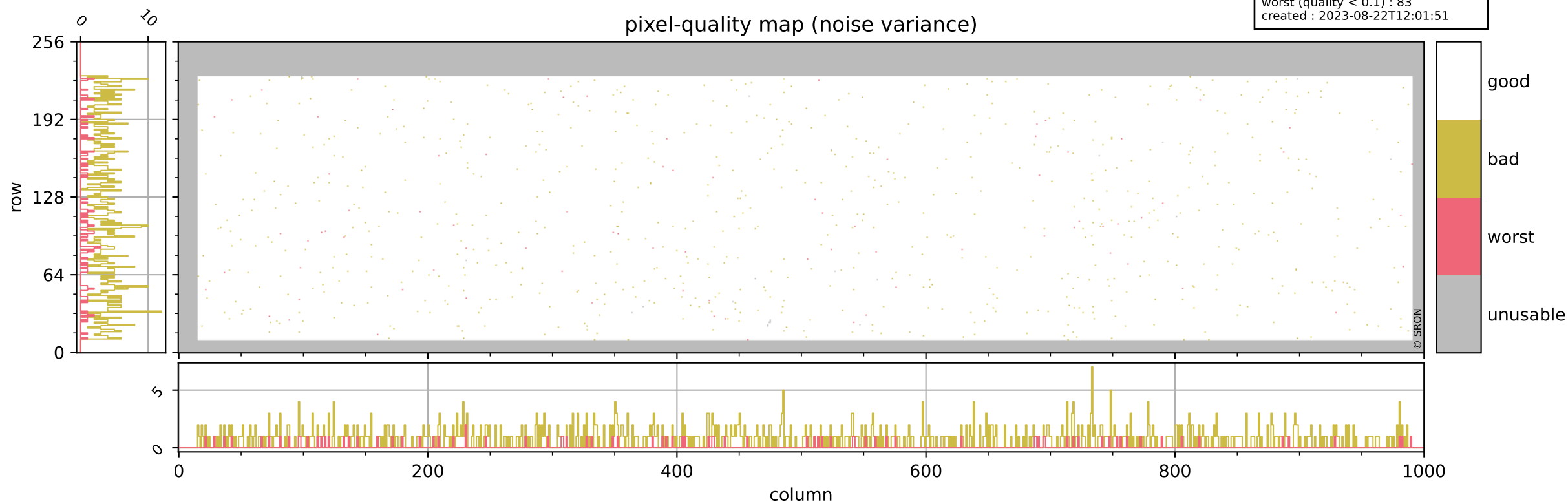
Tropomi SWIR pixel quality (beta nominal)

orbits : 20 in [13762, 13807]
coverage : 2020-06-09 / 2020-06-12
bad (quality < 0.8) : 145
worst (quality < 0.1) : 40
created : 2023-08-22T12:01:51



Tropomi SWIR pixel quality (beta nominal)

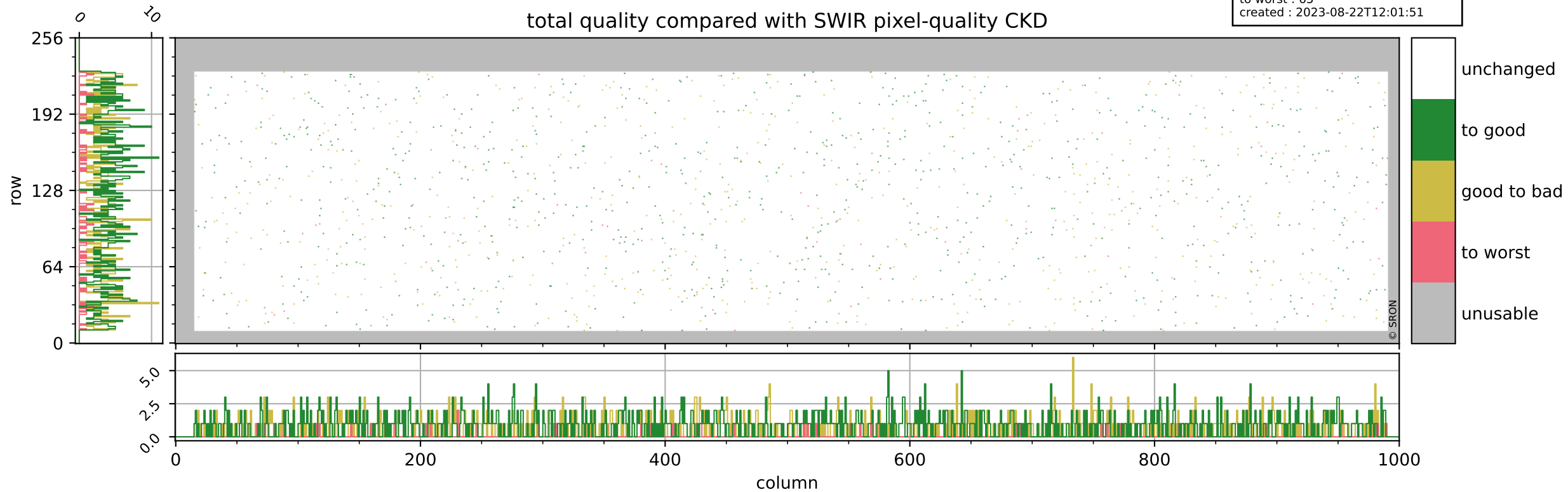
orbits : 20 in [13762, 13807]
coverage : 2020-06-09 / 2020-06-12
bad (quality < 0.8) : 812
worst (quality < 0.1) : 83
created : 2023-08-22T12:01:51



Tropomi SWIR pixel quality (beta nominal)

orbits : 20 in [13762, 13807]
coverage : 2020-06-09 / 2020-06-12
to good : 853
good to bad : 627
to worst : 65
created : 2023-08-22T12:01:51

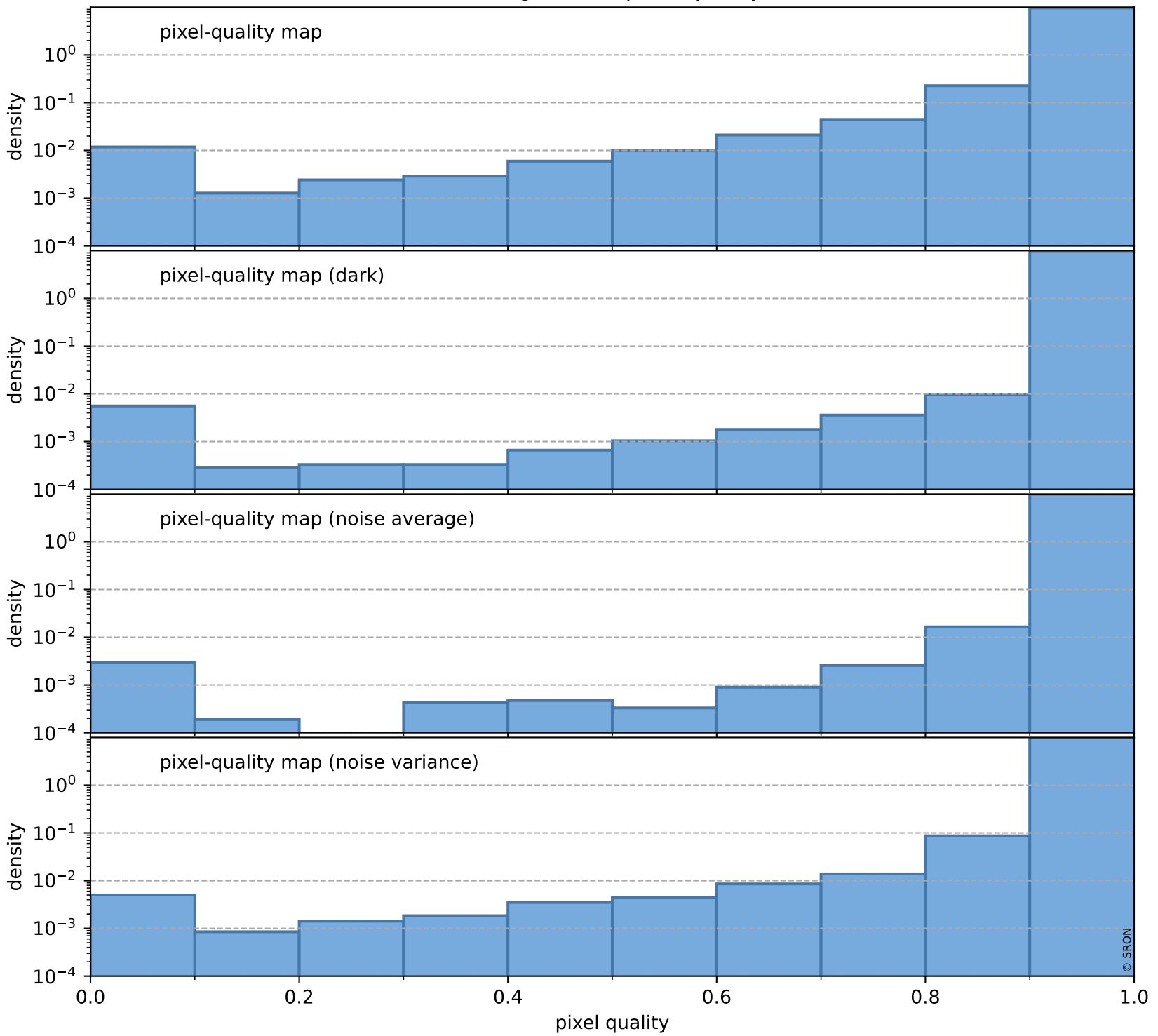
total quality compared with SWIR pixel-quality CKD



Tropomi SWIR pixel quality (beta nominal)

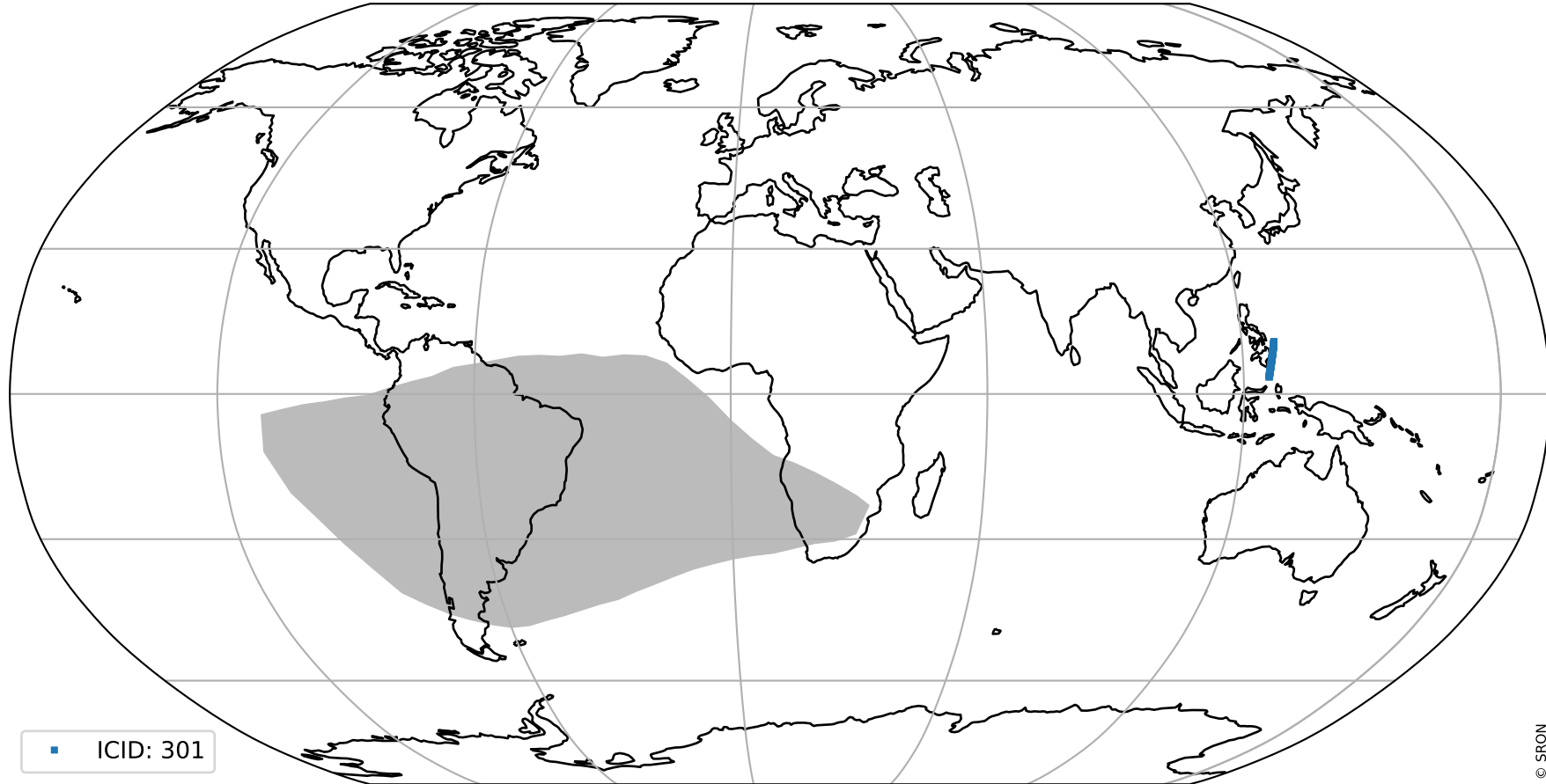
orbits : 20 in [13762, 13807]
coverage : 2020-06-09 / 2020-06-12
created : 2023-08-22T12:01:51

Histograms of pixel-quality



Tropomi SWIR pixel quality (beta nominal) ground-tracks of Sentinel-5P

orbits : 20 in [13762, 13807]
coverage : 2020-06-09 / 2020-06-12
created : 2023-08-22T12:01:52



Tropomi SWIR pixel quality (beta nominal)

orbits : [1867, 13807]
coverage : 2018-02-20 / 2020-06-12
created : 2023-08-22T12:01:52

trend of pixel quality & temperatures

