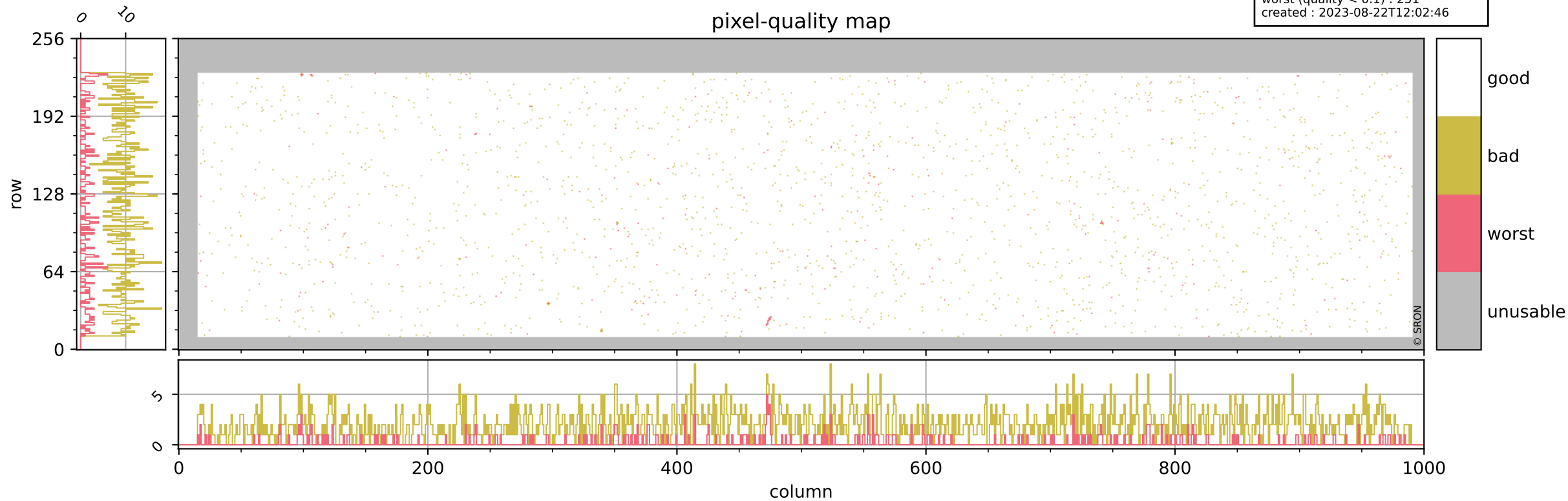


# Tropomi SWIR pixel quality (beta nominal)

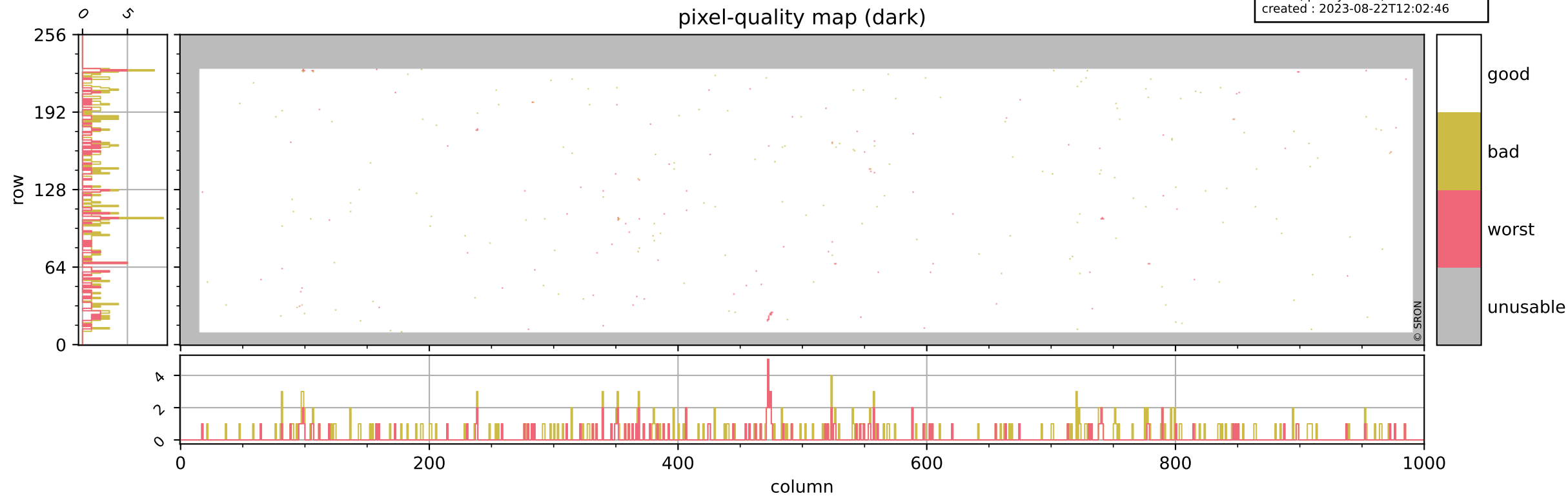
orbits : 17 in [14707, 14752]  
coverage : 2020-08-15 / 2020-08-18  
bad (quality < 0.8) : 2089  
worst (quality < 0.1) : 251  
created : 2023-08-22T12:02:46

## pixel-quality map



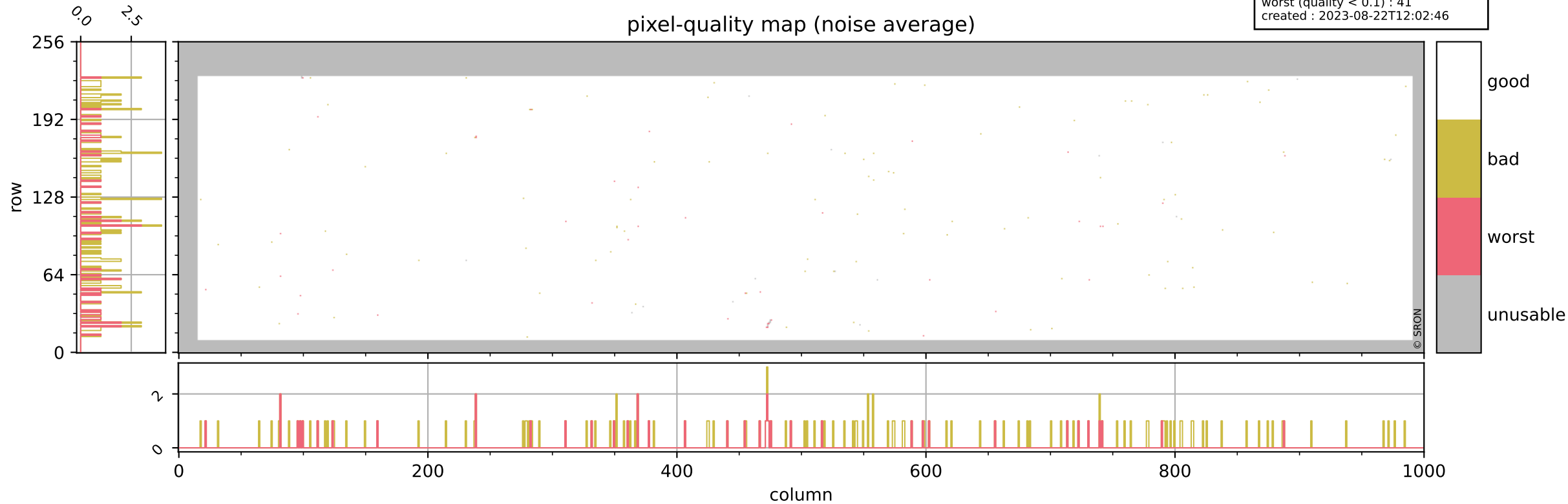
# Tropomi SWIR pixel quality (beta nominal)

orbits : 17 in [14707, 14752]  
coverage : 2020-08-15 / 2020-08-18  
bad (quality < 0.8) : 294  
worst (quality < 0.1) : 121  
created : 2023-08-22T12:02:46



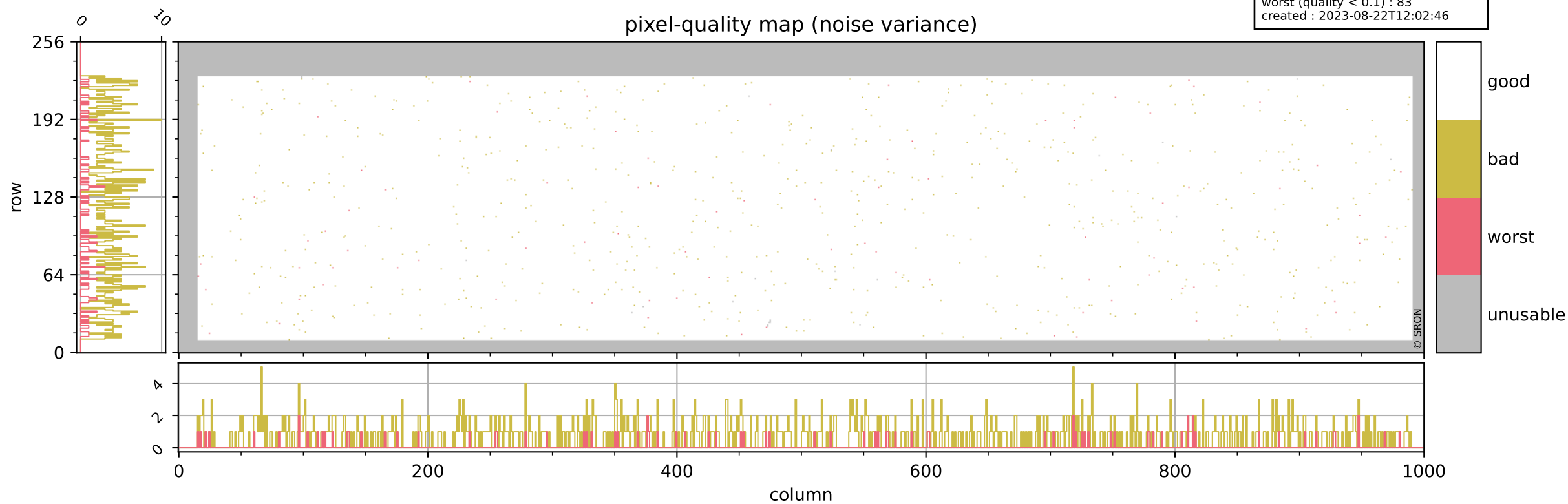
# Tropomi SWIR pixel quality (beta nominal)

orbits : 17 in [14707, 14752]  
coverage : 2020-08-15 / 2020-08-18  
bad (quality < 0.8) : 137  
worst (quality < 0.1) : 41  
created : 2023-08-22T12:02:46



# Tropomi SWIR pixel quality (beta nominal)

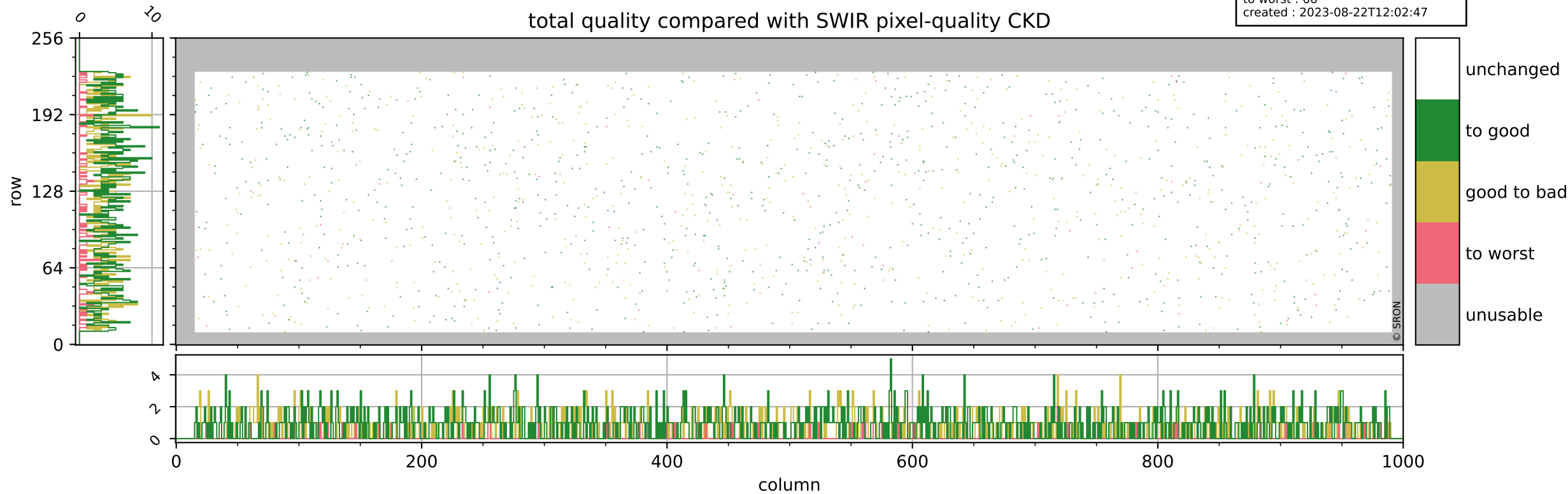
orbits : 17 in [14707, 14752]  
coverage : 2020-08-15 / 2020-08-18  
bad (quality < 0.8) : 768  
worst (quality < 0.1) : 83  
created : 2023-08-22T12:02:46



# Tropomi SWIR pixel quality (beta nominal)

orbits : 17 in [14707, 14752]  
coverage : 2020-08-15 / 2020-08-18  
to good : 866  
good to bad : 616  
to worst : 66  
created : 2023-08-22T12:02:47

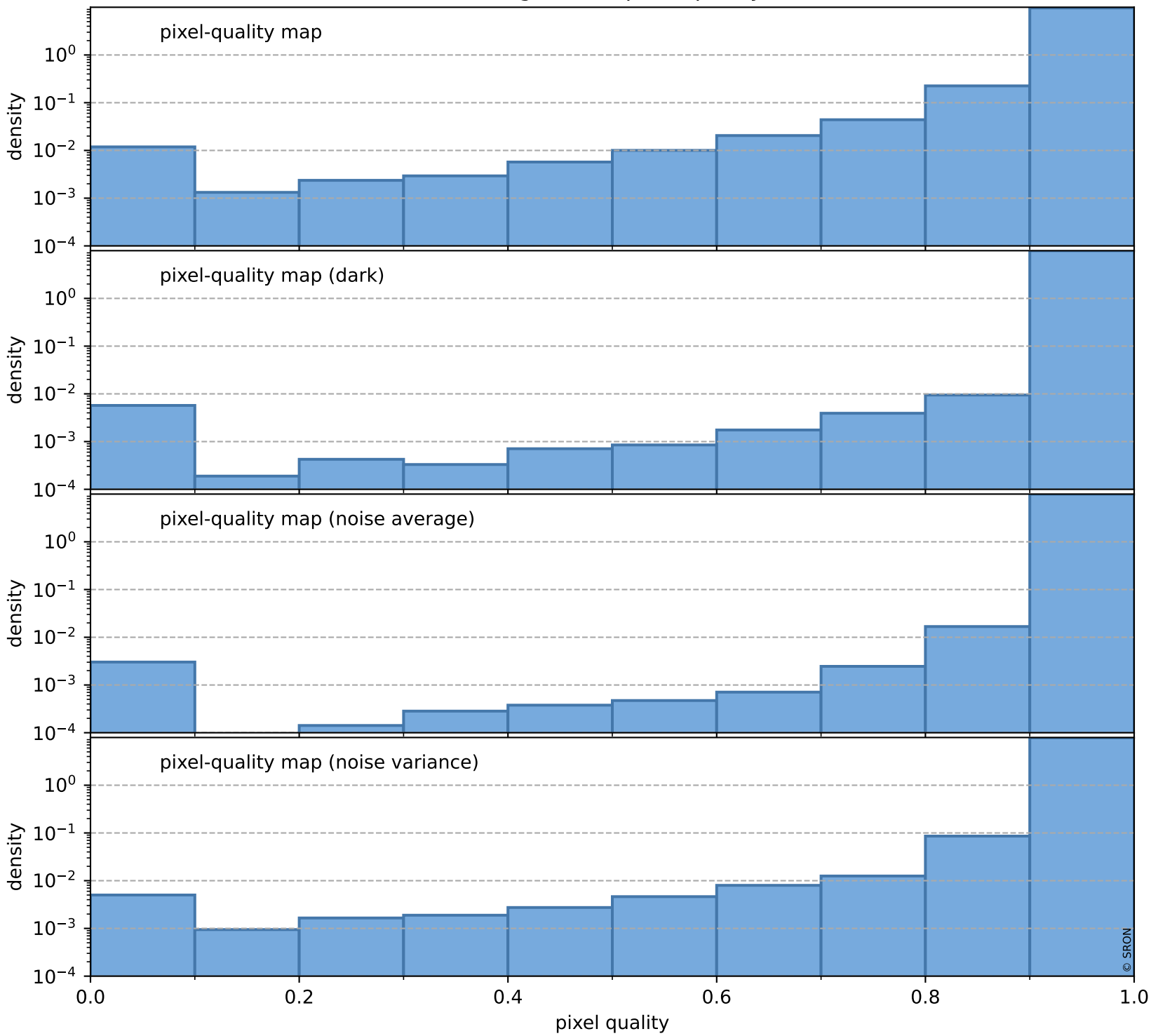
## total quality compared with SWIR pixel-quality CKD



# Tropomi SWIR pixel quality (beta nominal)

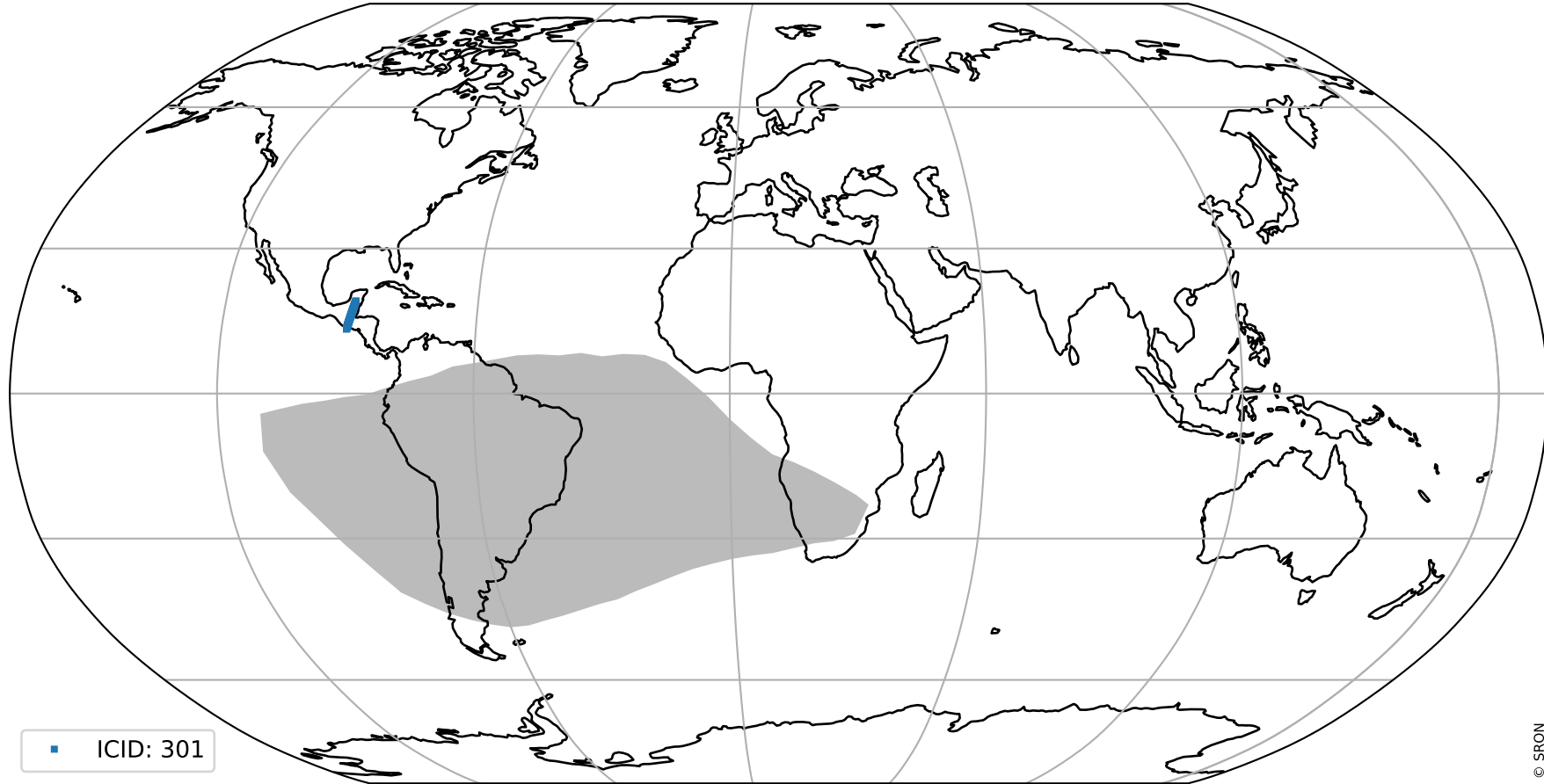
orbits : 17 in [14707, 14752]  
coverage : 2020-08-15 / 2020-08-18  
created : 2023-08-22T12:02:47

## Histograms of pixel-quality



# Tropomi SWIR pixel quality (beta nominal) ground-tracks of Sentinel-5P

orbits : 17 in [14707, 14752]  
coverage : 2020-08-15 / 2020-08-18  
created : 2023-08-22T12:02:47



# Tropomi SWIR pixel quality (beta nominal)

orbits : [1867, 14752]  
coverage : 2018-02-20 / 2020-08-18  
created : 2023-08-22T12:02:48

## trend of pixel quality & temperatures

