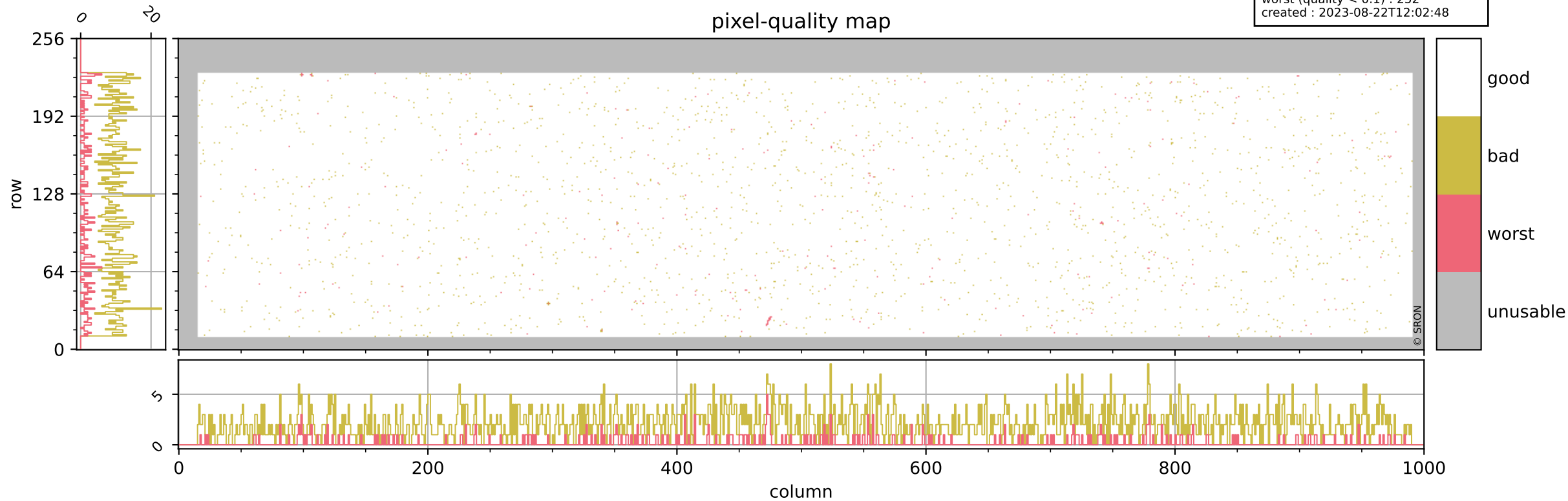


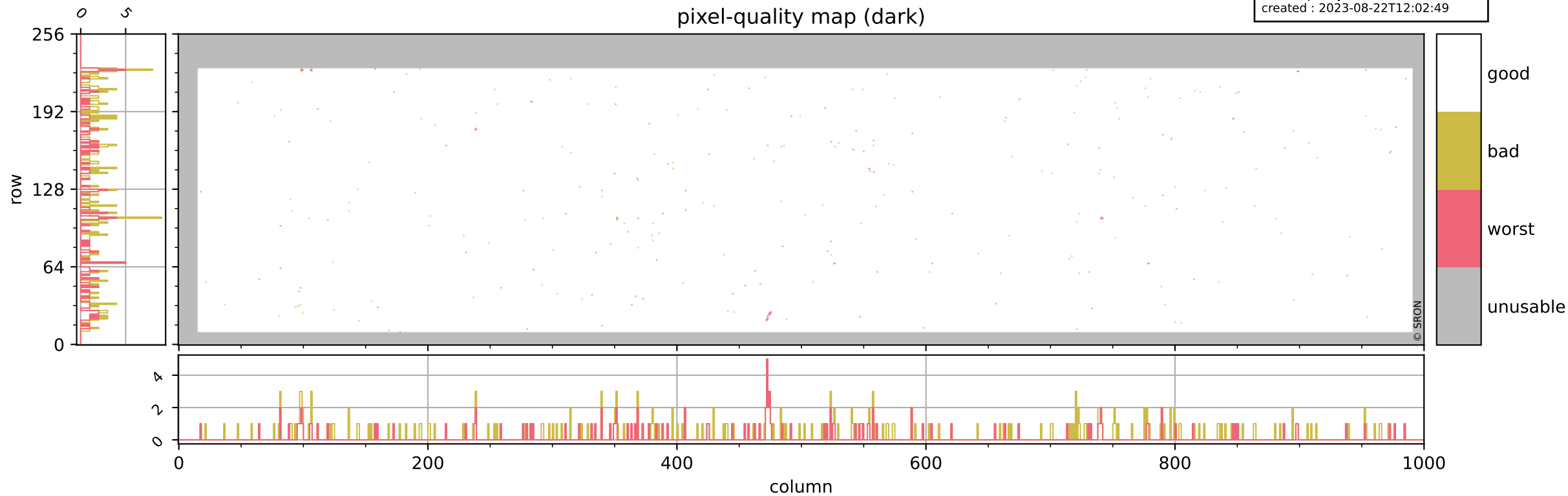
Tropomi SWIR pixel quality (beta nominal)

orbits : 20 in [14752, 14797]
coverage : 2020-08-18 / 2020-08-21
bad (quality < 0.8) : 2133
worst (quality < 0.1) : 252
created : 2023-08-22T12:02:48



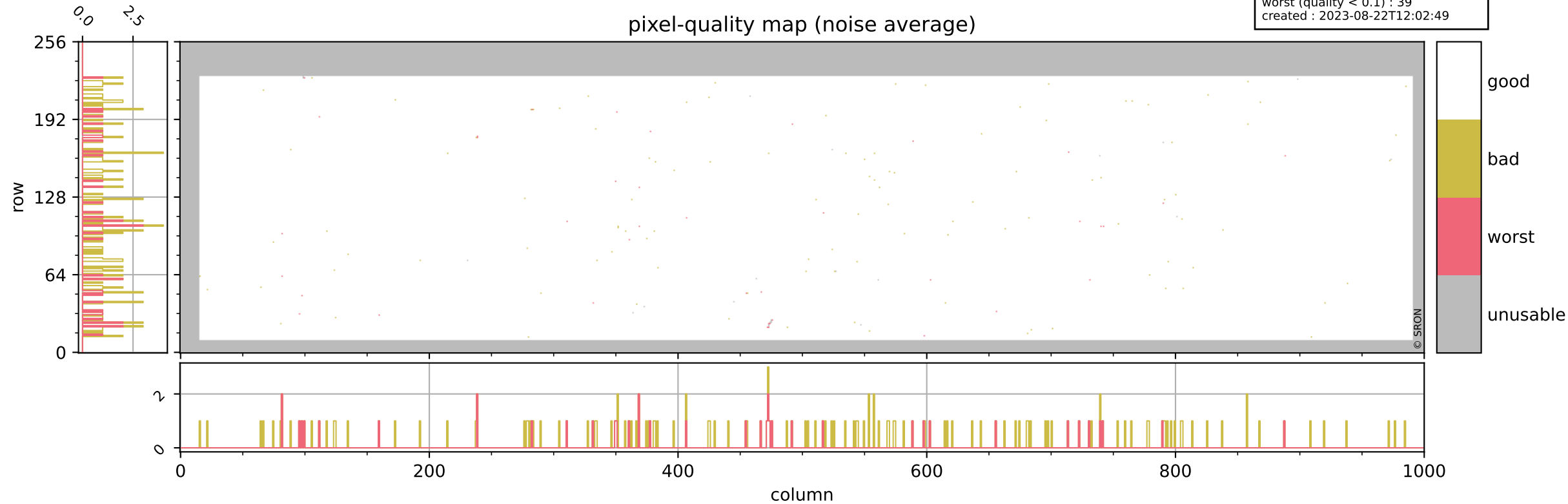
Tropomi SWIR pixel quality (beta nominal)

orbits : 20 in [14752, 14797]
coverage : 2020-08-18 / 2020-08-21
bad (quality < 0.8) : 291
worst (quality < 0.1) : 120
created : 2023-08-22T12:02:49



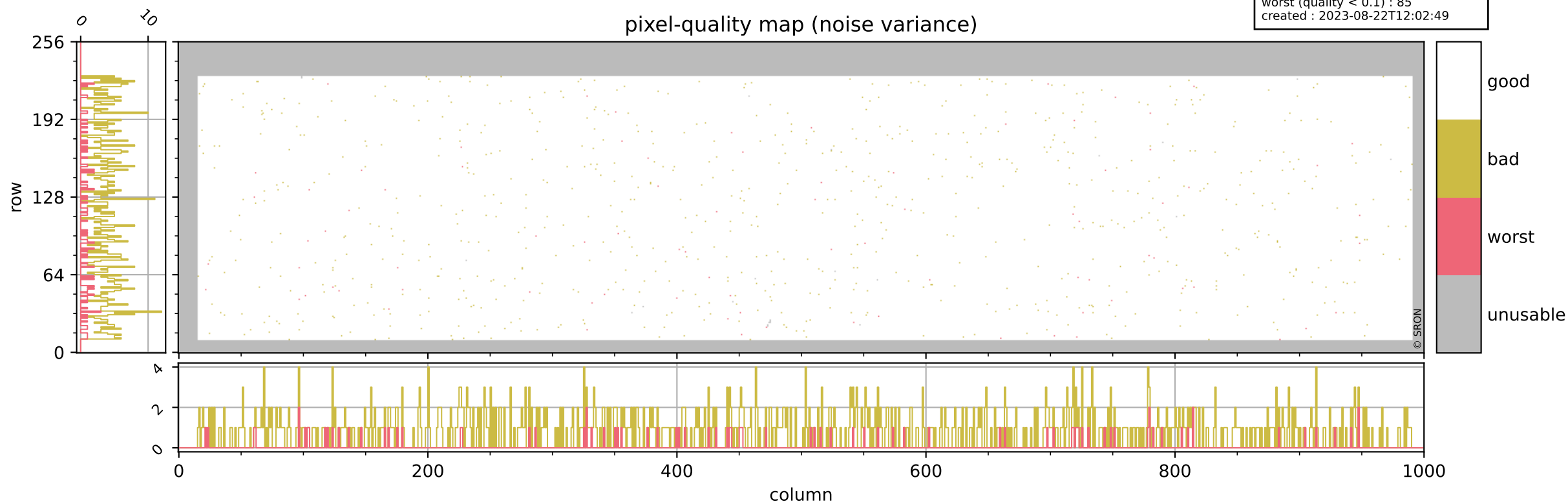
Tropomi SWIR pixel quality (beta nominal)

orbits : 20 in [14752, 14797]
coverage : 2020-08-18 / 2020-08-21
bad (quality < 0.8) : 147
worst (quality < 0.1) : 39
created : 2023-08-22T12:02:49



Tropomi SWIR pixel quality (beta nominal)

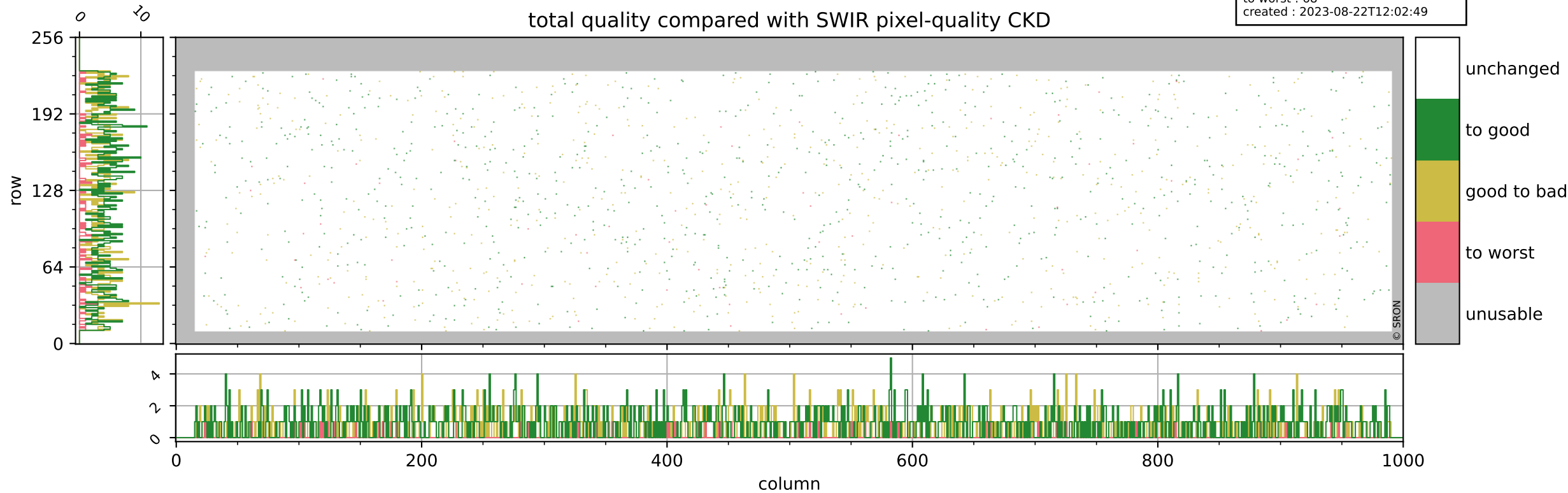
orbits : 20 in [14752, 14797]
coverage : 2020-08-18 / 2020-08-21
bad (quality < 0.8) : 813
worst (quality < 0.1) : 85
created : 2023-08-22T12:02:49



Tropomi SWIR pixel quality (beta nominal)

orbits : 20 in [14752, 14797]
coverage : 2020-08-18 / 2020-08-21
to good : 865
good to bad : 653
to worst : 68
created : 2023-08-22T12:02:49

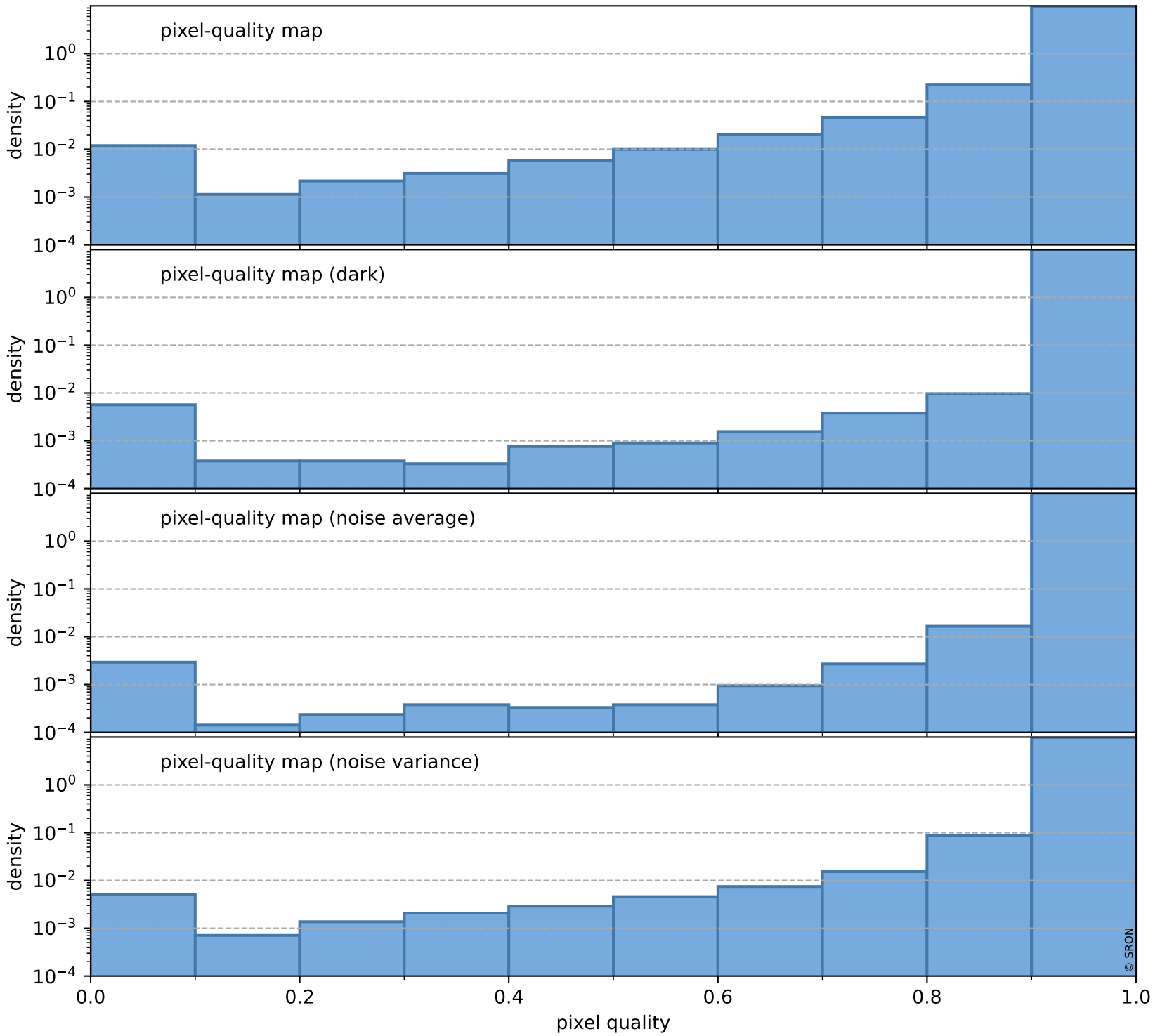
total quality compared with SWIR pixel-quality CKD



Tropomi SWIR pixel quality (beta nominal)

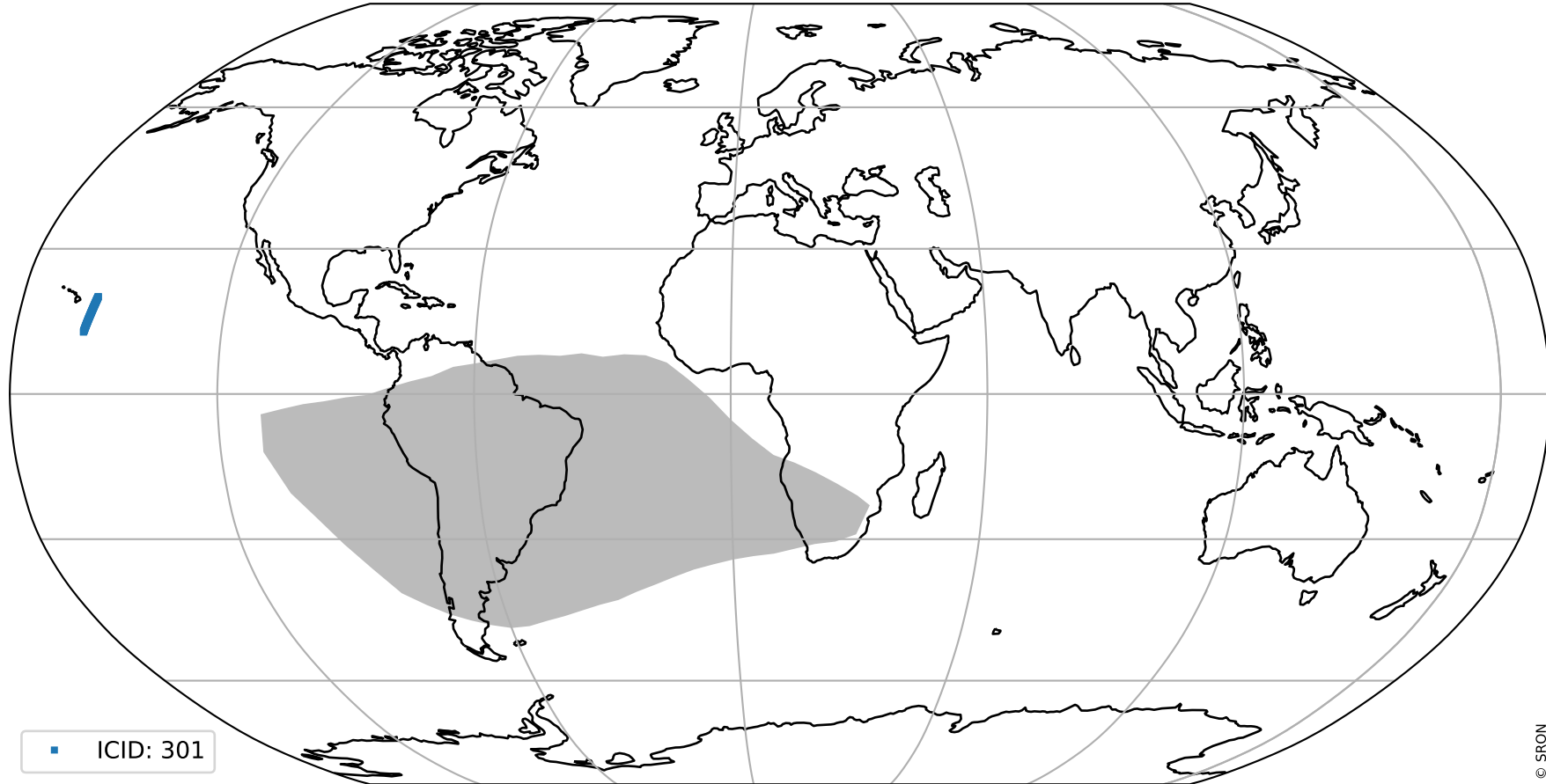
orbits : 20 in [14752, 14797]
coverage : 2020-08-18 / 2020-08-21
created : 2023-08-22T12:02:50

Histograms of pixel-quality



Tropomi SWIR pixel quality (beta nominal) ground-tracks of Sentinel-5P

orbits : 20 in [14752, 14797]
coverage : 2020-08-18 / 2020-08-21
created : 2023-08-22T12:02:50



Tropomi SWIR pixel quality (beta nominal)

orbits : [1867, 14797]
coverage : 2018-02-20 / 2020-08-21
created : 2023-08-22T12:02:50

trend of pixel quality & temperatures

