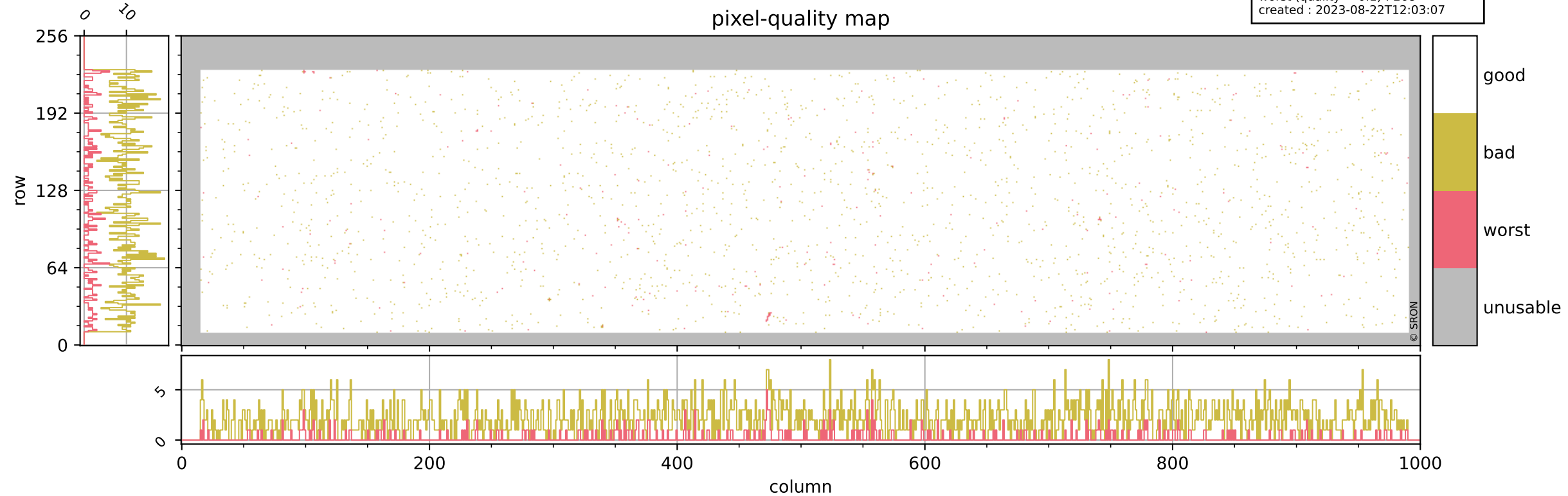


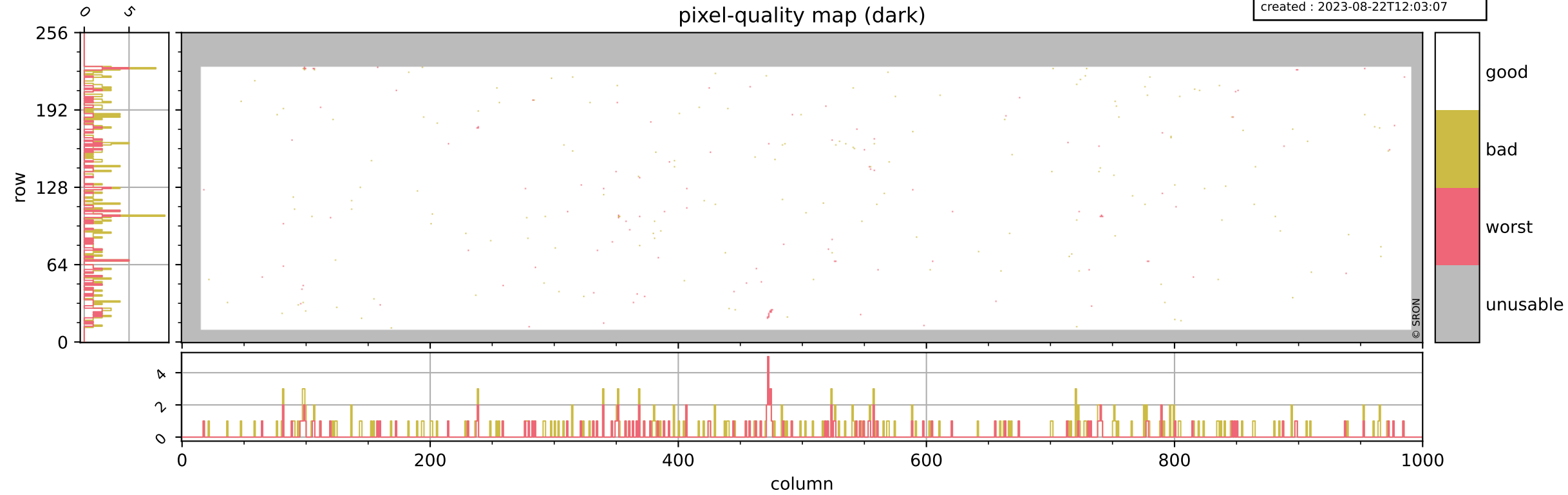
Tropomi SWIR pixel quality (beta nominal)

orbits : 18 in [15067, 15112]
coverage : 2020-09-09 / 2020-09-12
bad (quality < 0.8) : 2186
worst (quality < 0.1) : 268
created : 2023-08-22T12:03:07



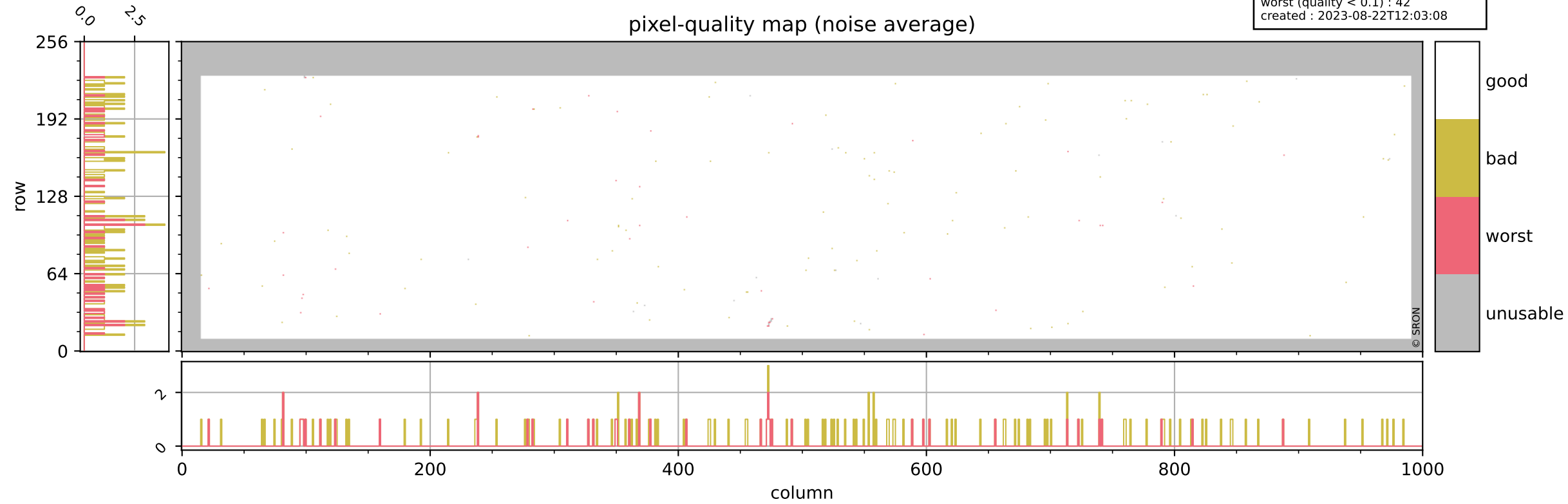
Tropomi SWIR pixel quality (beta nominal)

orbits : 18 in [15067, 15112]
coverage : 2020-09-09 / 2020-09-12
bad (quality < 0.8) : 286
worst (quality < 0.1) : 121
created : 2023-08-22T12:03:07



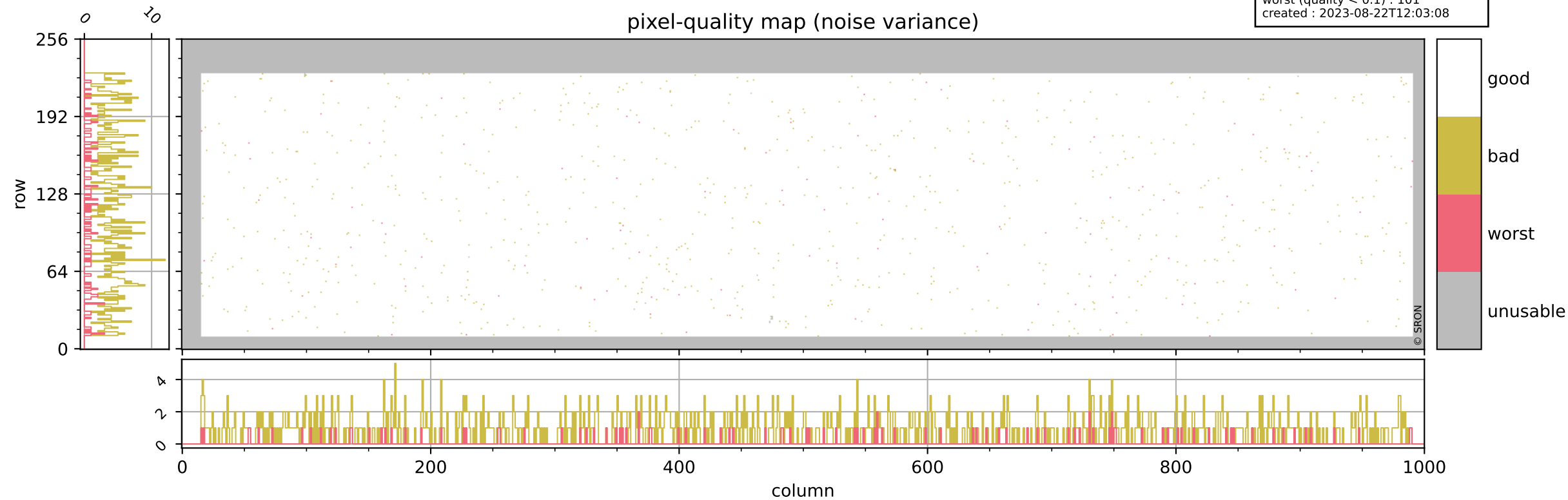
Tropomi SWIR pixel quality (beta nominal)

orbits : 18 in [15067, 15112]
coverage : 2020-09-09 / 2020-09-12
bad (quality < 0.8) : 144
worst (quality < 0.1) : 42
created : 2023-08-22T12:03:08



Tropomi SWIR pixel quality (beta nominal)

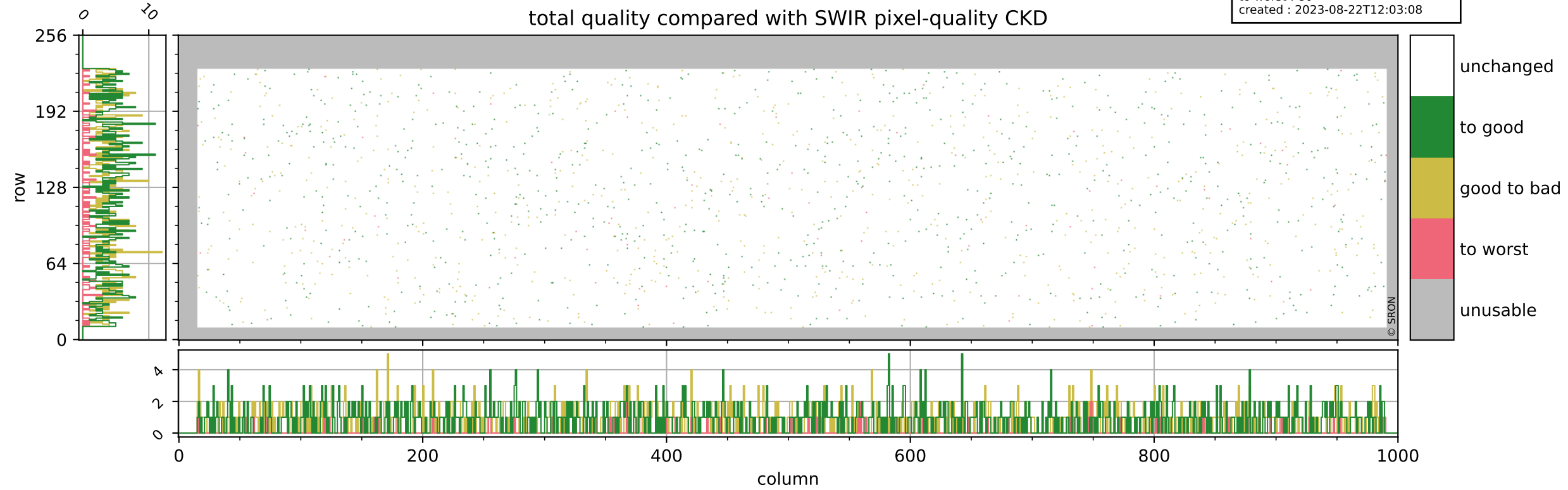
orbits : 18 in [15067, 15112]
coverage : 2020-09-09 / 2020-09-12
bad (quality < 0.8) : 875
worst (quality < 0.1) : 101
created : 2023-08-22T12:03:08



Tropomi SWIR pixel quality (beta nominal)

orbits : 18 in [15067, 15112]
coverage : 2020-09-09 / 2020-09-12
to good : 867
good to bad : 696
to worst : 80
created : 2023-08-22T12:03:08

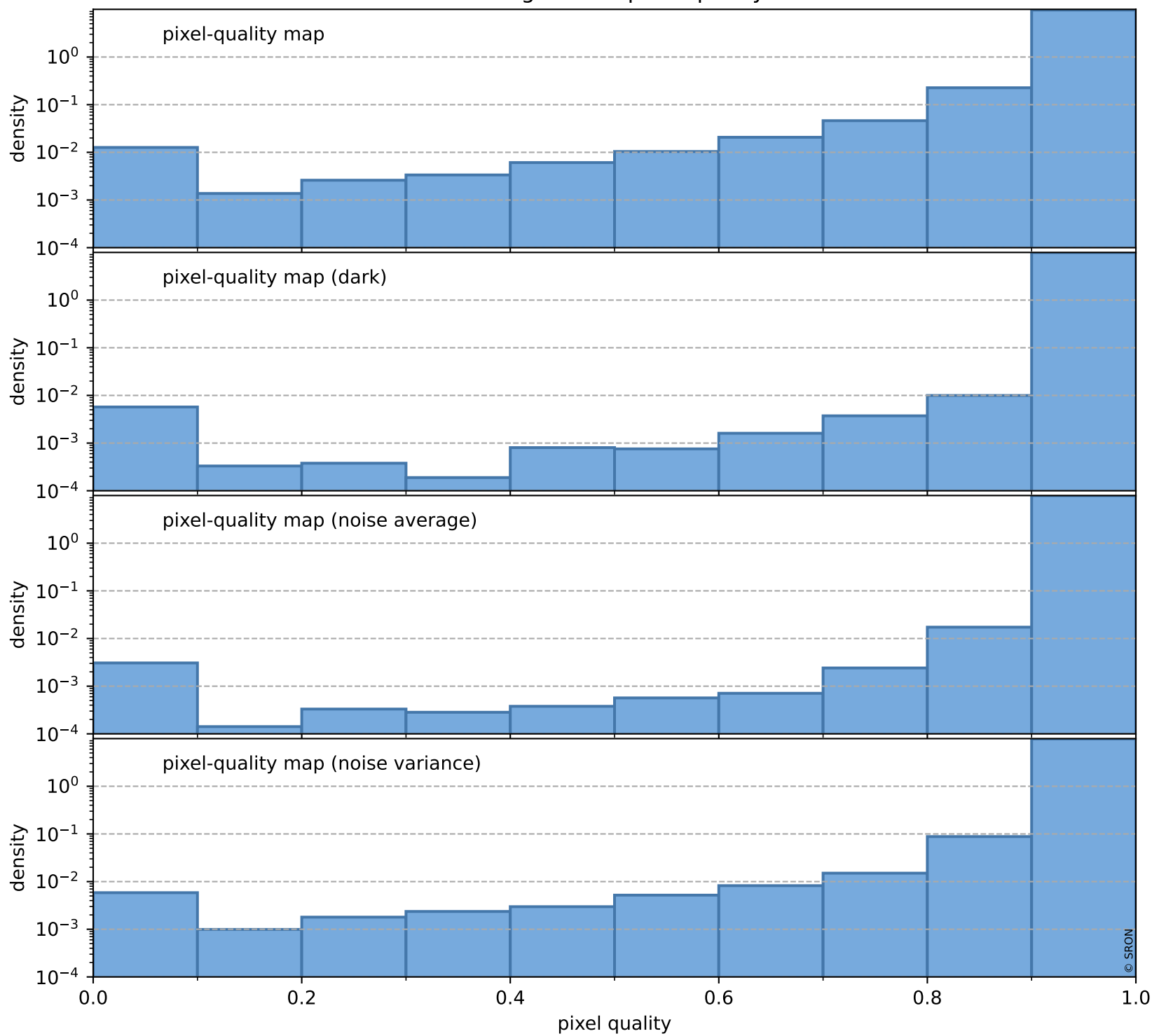
total quality compared with SWIR pixel-quality CKD



Tropomi SWIR pixel quality (beta nominal)

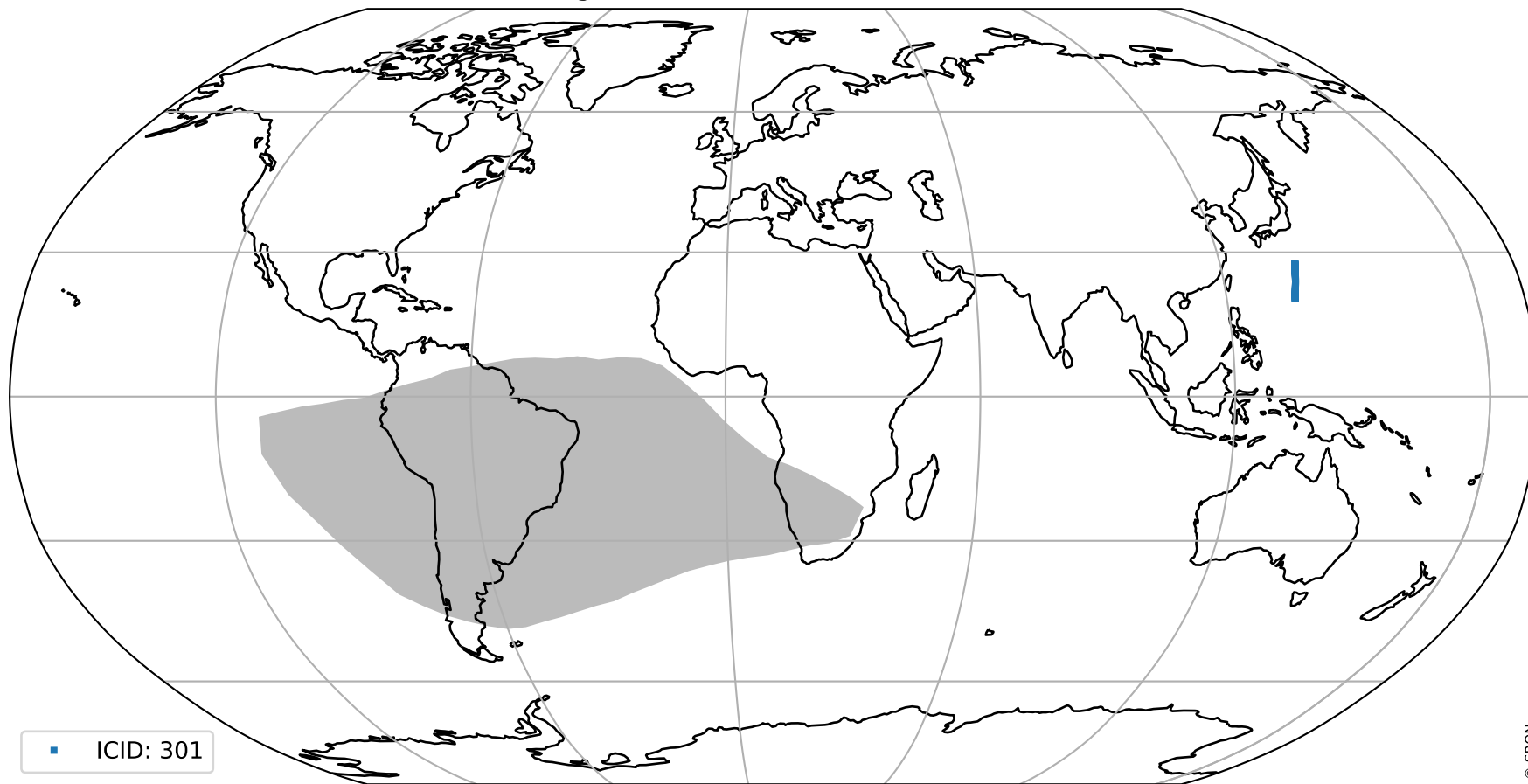
orbits : 18 in [15067, 15112]
coverage : 2020-09-09 / 2020-09-12
created : 2023-08-22T12:03:08

Histograms of pixel-quality



Tropomi SWIR pixel quality (beta nominal) ground-tracks of Sentinel-5P

orbits : 18 in [15067, 15112]
coverage : 2020-09-09 / 2020-09-12
created : 2023-08-22T12:03:09



Tropomi SWIR pixel quality (beta nominal)

orbits : [1867, 15112]
coverage : 2018-02-20 / 2020-09-12
created : 2023-08-22T12:03:09

trend of pixel quality & temperatures

