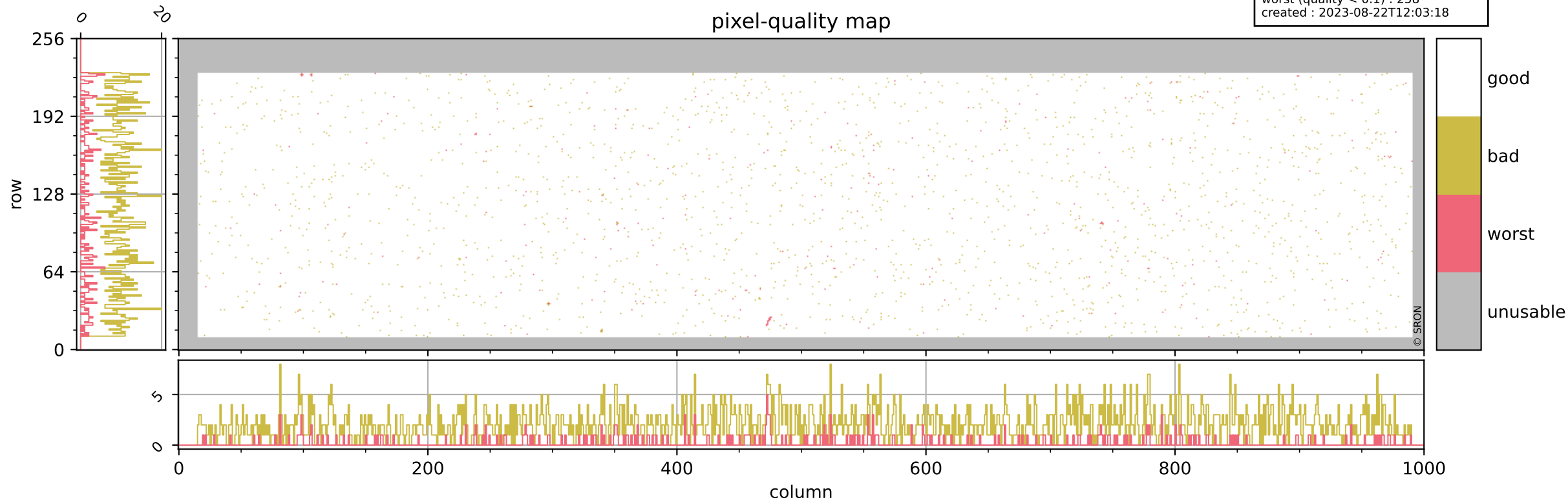


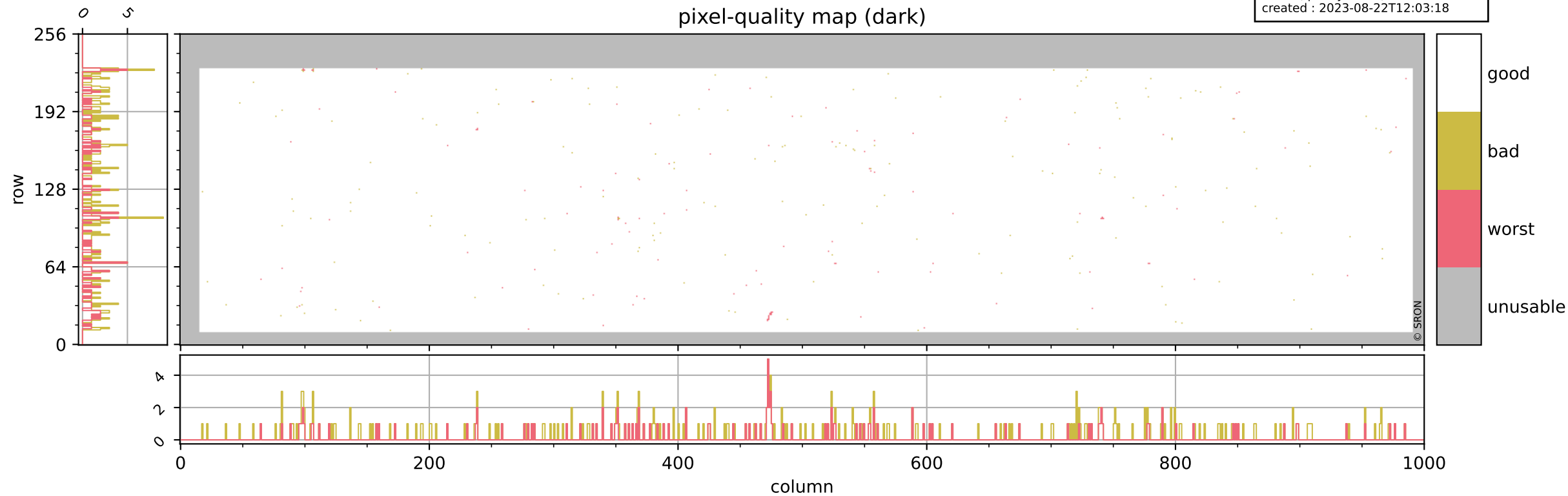
Tropomi SWIR pixel quality (beta nominal)

orbits : 18 in [15247, 15292]
coverage : 2020-09-22 / 2020-09-25
bad (quality < 0.8) : 2114
worst (quality < 0.1) : 258
created : 2023-08-22T12:03:18



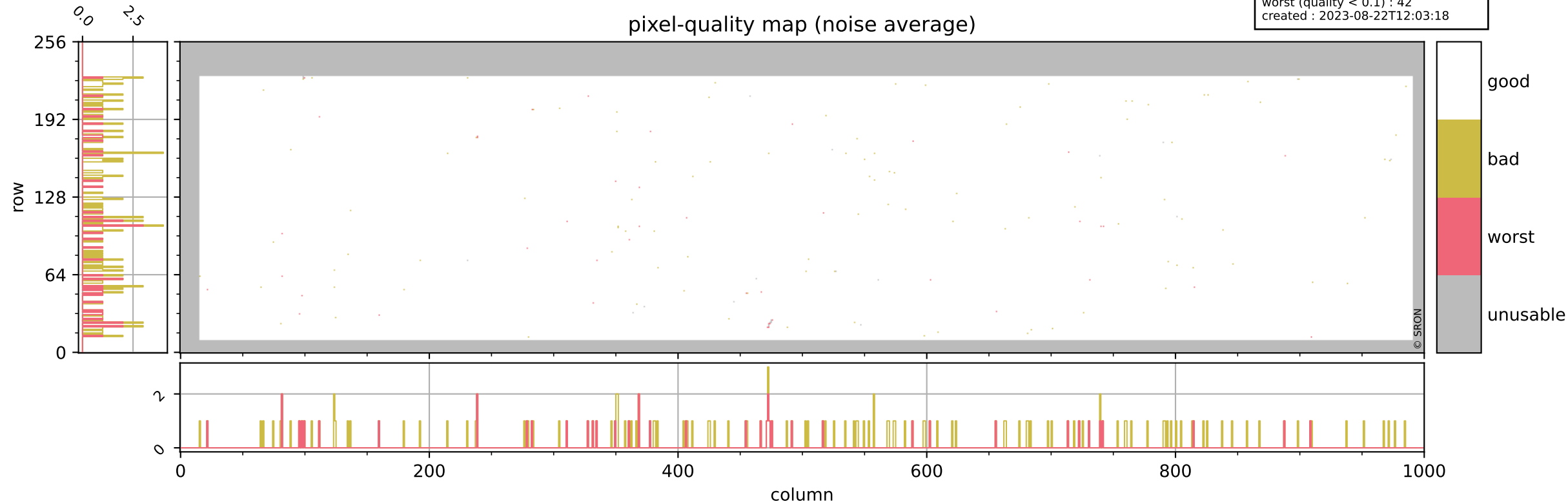
Tropomi SWIR pixel quality (beta nominal)

orbits : 18 in [15247, 15292]
coverage : 2020-09-22 / 2020-09-25
bad (quality < 0.8) : 294
worst (quality < 0.1) : 121
created : 2023-08-22T12:03:18



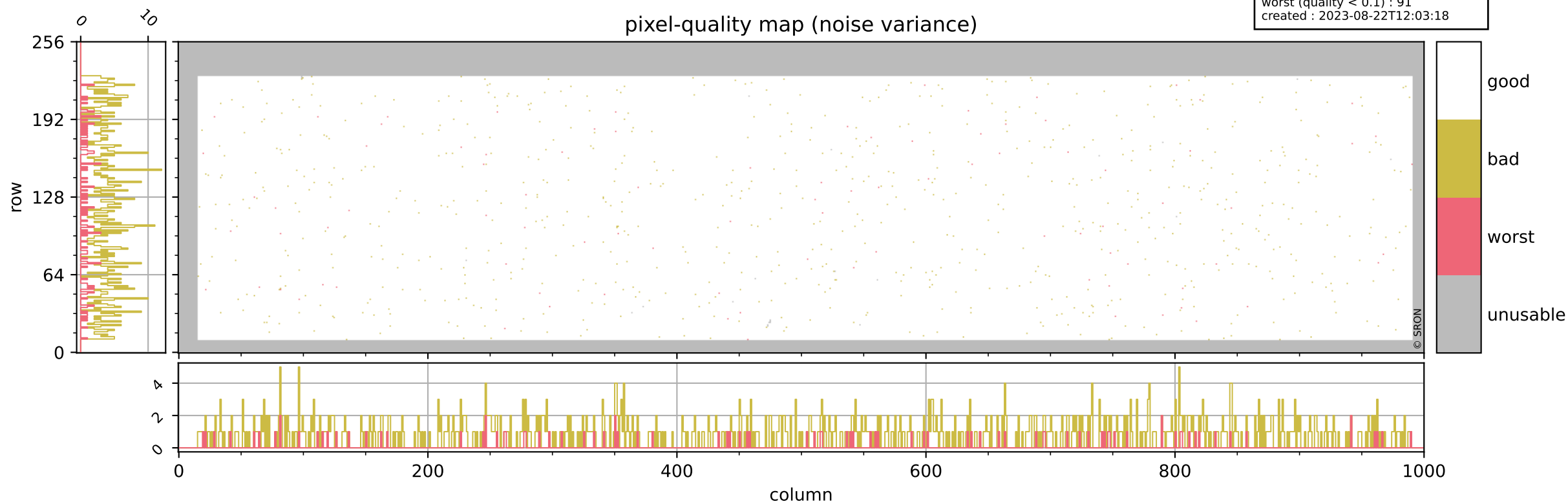
Tropomi SWIR pixel quality (beta nominal)

orbits : 18 in [15247, 15292]
coverage : 2020-09-22 / 2020-09-25
bad (quality < 0.8) : 144
worst (quality < 0.1) : 42
created : 2023-08-22T12:03:18



Tropomi SWIR pixel quality (beta nominal)

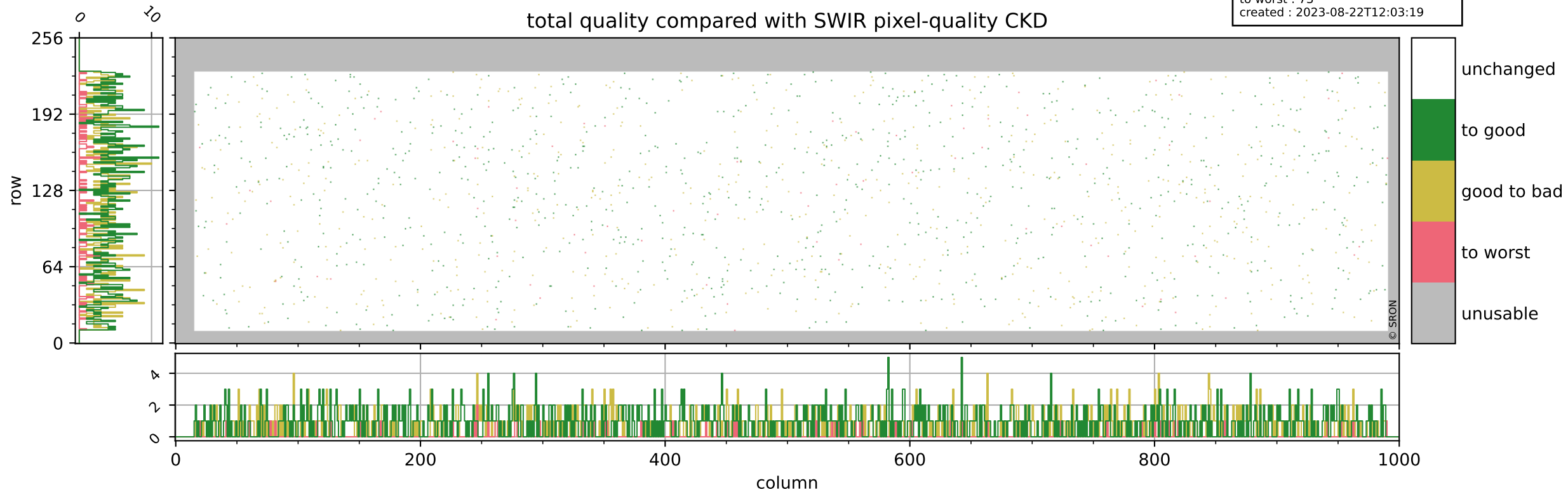
orbits : 18 in [15247, 15292]
coverage : 2020-09-22 / 2020-09-25
bad (quality < 0.8) : 810
worst (quality < 0.1) : 91
created : 2023-08-22T12:03:18



Tropomi SWIR pixel quality (beta nominal)

orbits : 18 in [15247, 15292]
coverage : 2020-09-22 / 2020-09-25
to good : 862
good to bad : 631
to worst : 73
created : 2023-08-22T12:03:19

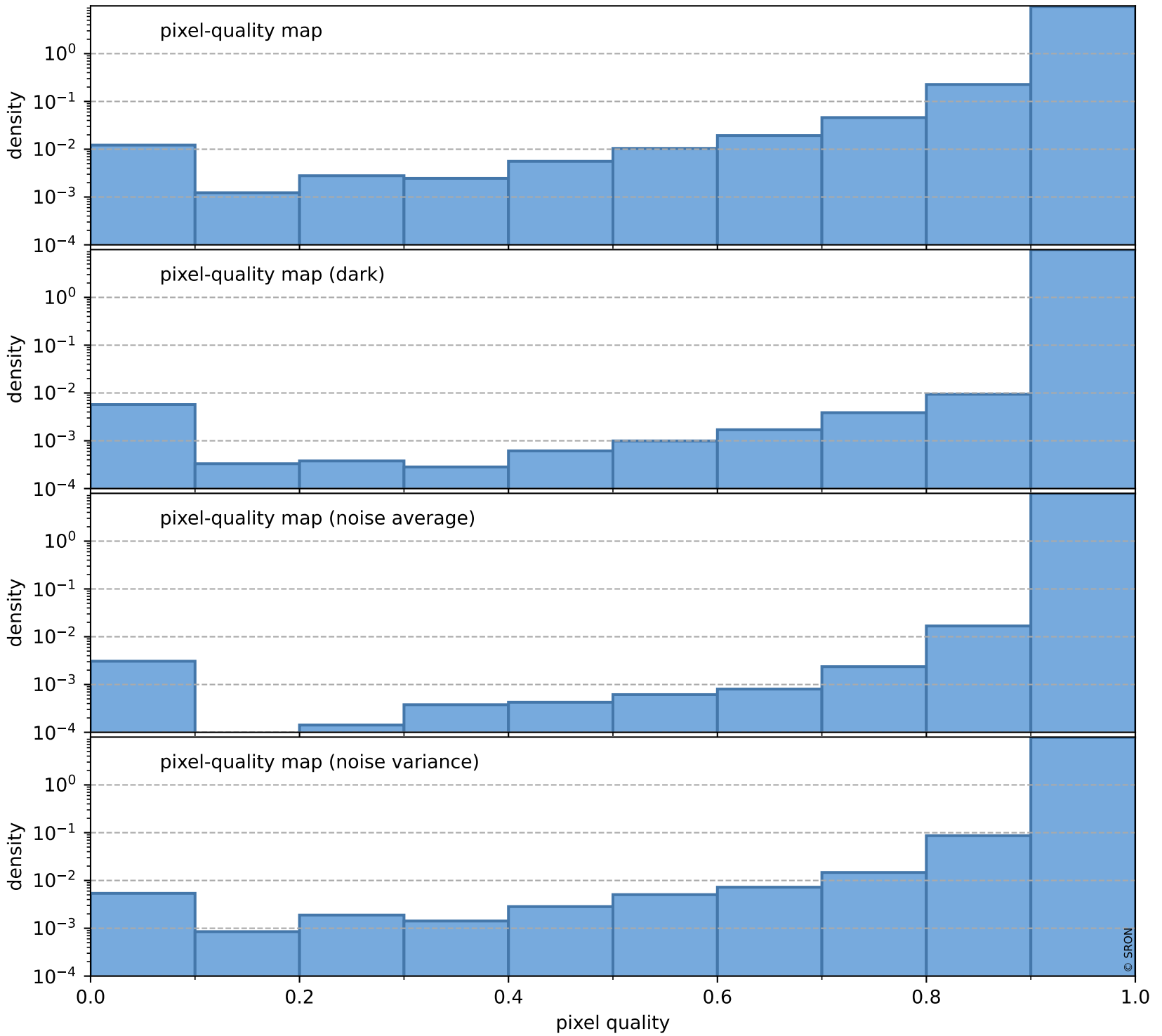
total quality compared with SWIR pixel-quality CKD



Tropomi SWIR pixel quality (beta nominal)

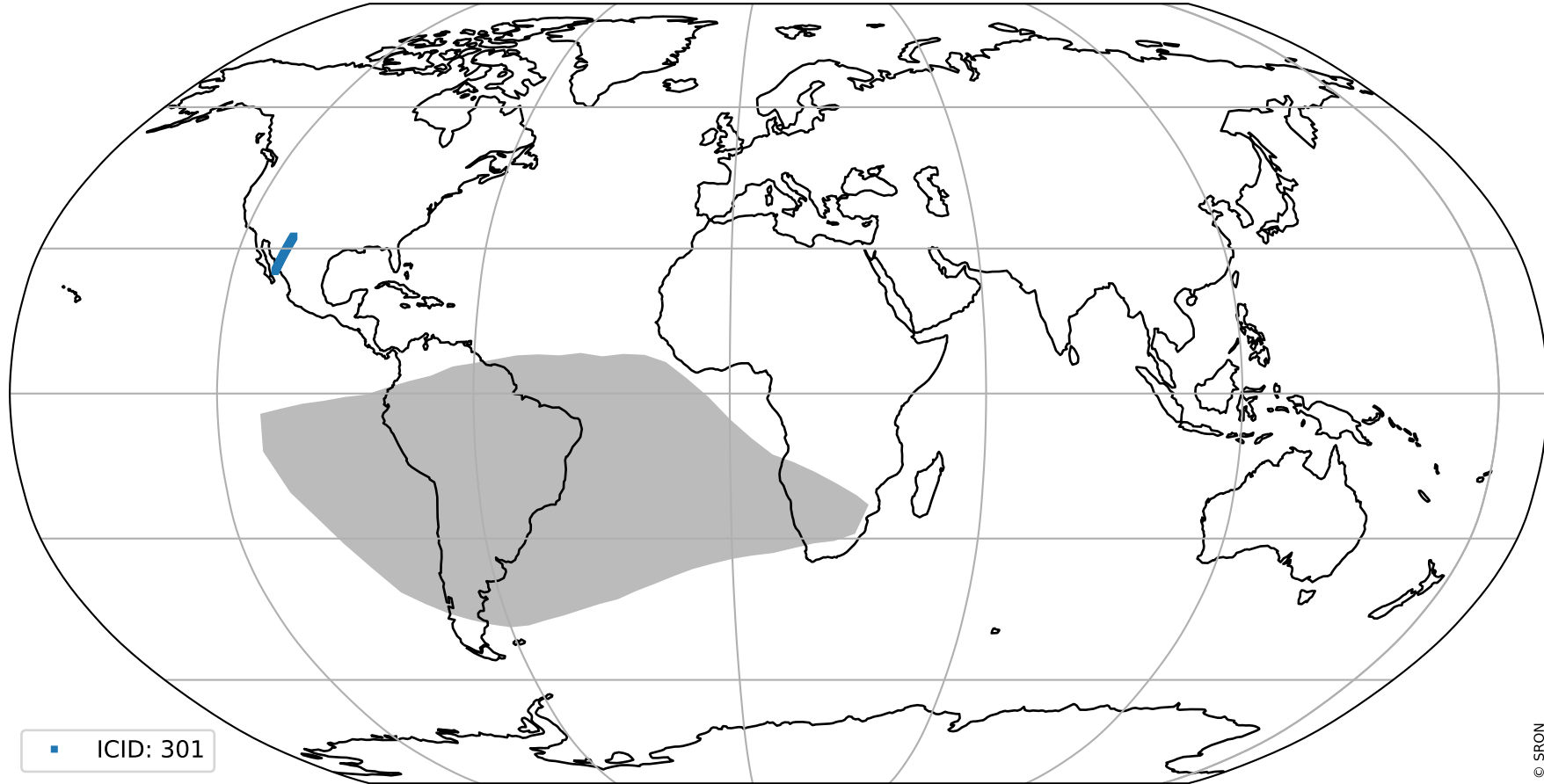
orbits : 18 in [15247, 15292]
coverage : 2020-09-22 / 2020-09-25
created : 2023-08-22T12:03:19

Histograms of pixel-quality



Tropomi SWIR pixel quality (beta nominal) ground-tracks of Sentinel-5P

orbits : 18 in [15247, 15292]
coverage : 2020-09-22 / 2020-09-25
created : 2023-08-22T12:03:20



Tropomi SWIR pixel quality (beta nominal)

orbits : [1867, 15292]
coverage : 2018-02-20 / 2020-09-25
created : 2023-08-22T12:03:20

trend of pixel quality & temperatures

