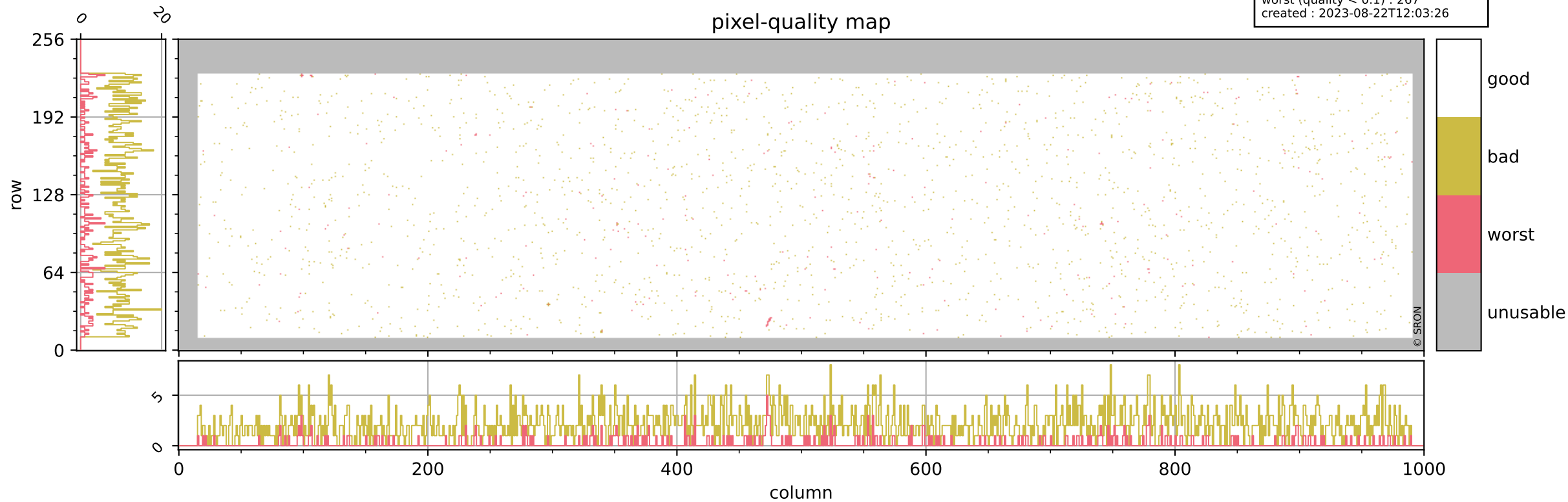


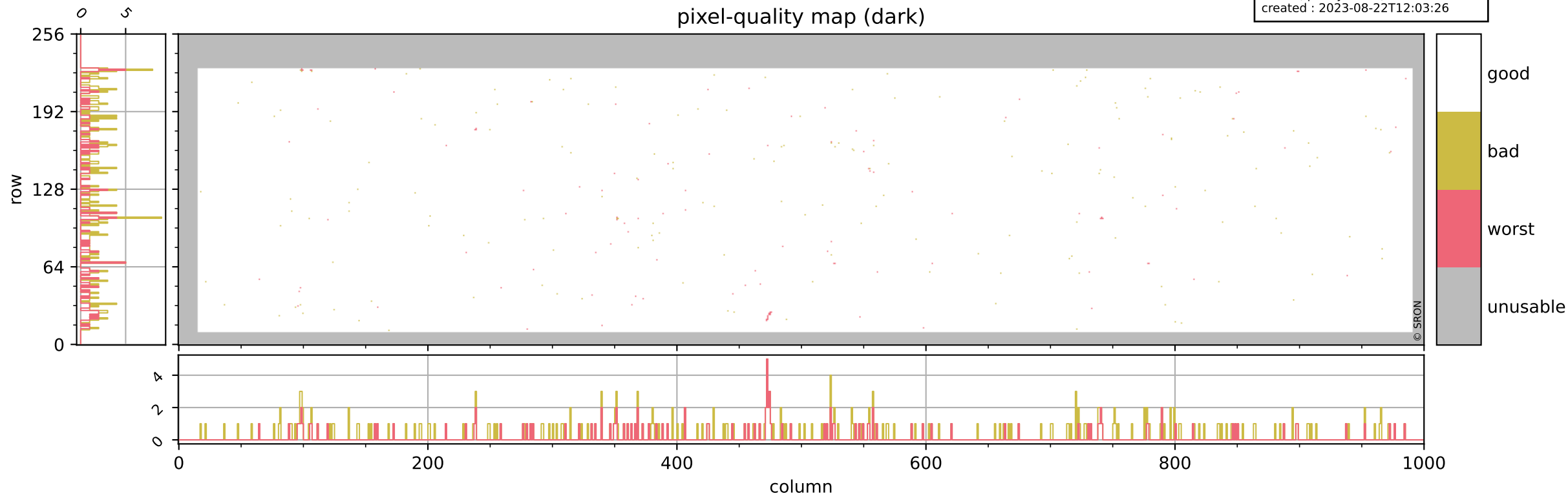
Tropomi SWIR pixel quality (beta nominal)

orbits : 20 in [15382, 15427]
coverage : 2020-10-01 / 2020-10-04
bad (quality < 0.8) : 2170
worst (quality < 0.1) : 267
created : 2023-08-22T12:03:26



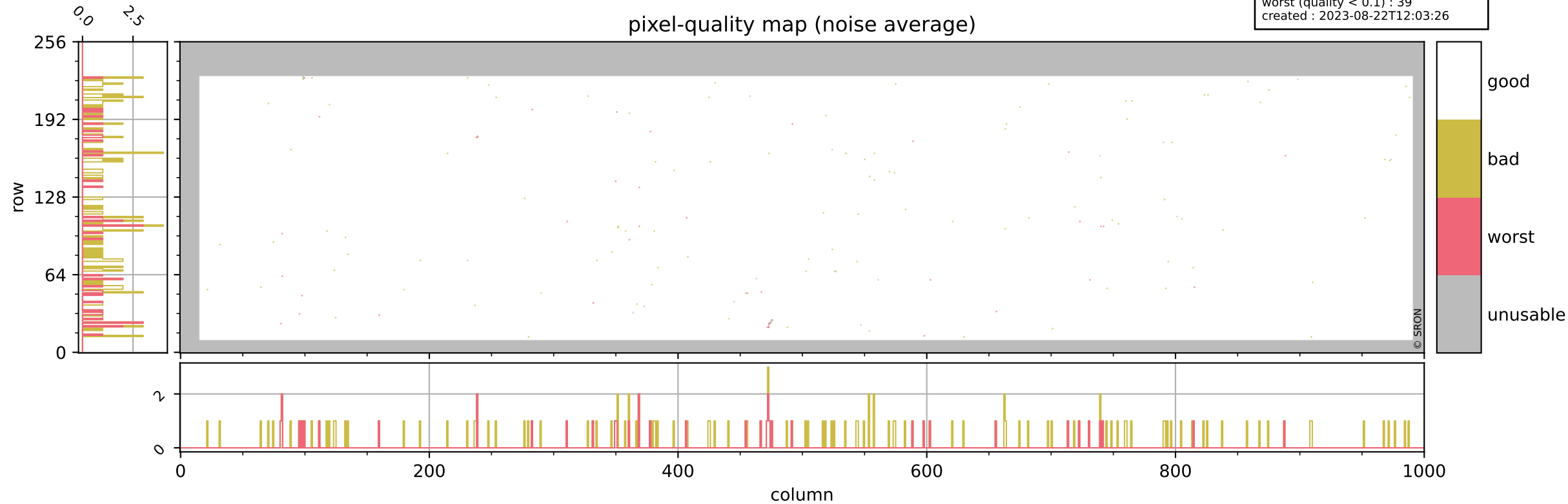
Tropomi SWIR pixel quality (beta nominal)

orbits : 20 in [15382, 15427]
coverage : 2020-10-01 / 2020-10-04
bad (quality < 0.8) : 288
worst (quality < 0.1) : 116
created : 2023-08-22T12:03:26



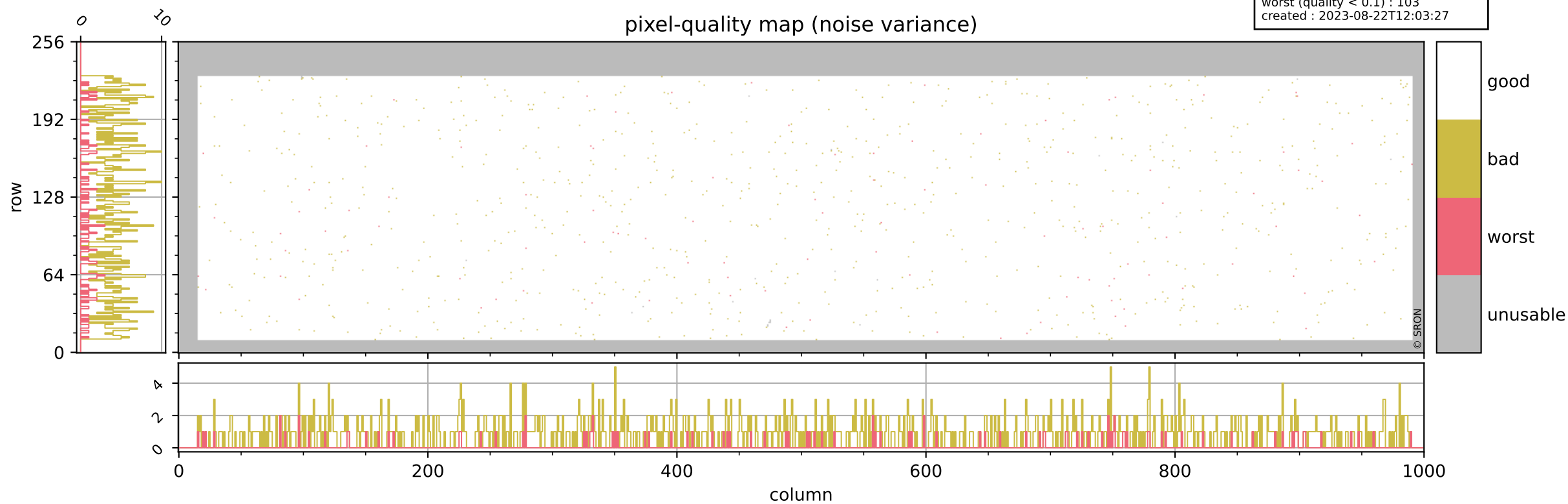
Tropomi SWIR pixel quality (beta nominal)

orbits : 20 in [15382, 15427]
coverage : 2020-10-01 / 2020-10-04
bad (quality < 0.8) : 140
worst (quality < 0.1) : 39
created : 2023-08-22T12:03:26



Tropomi SWIR pixel quality (beta nominal)

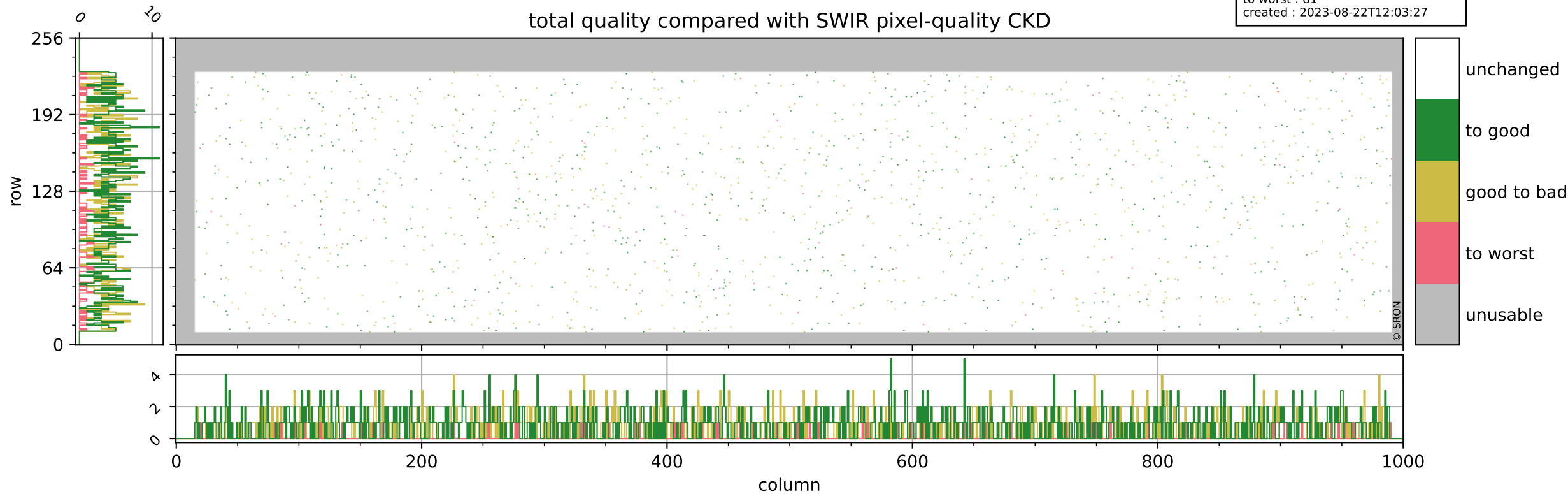
orbits : 20 in [15382, 15427]
coverage : 2020-10-01 / 2020-10-04
bad (quality < 0.8) : 868
worst (quality < 0.1) : 103
created : 2023-08-22T12:03:27



Tropomi SWIR pixel quality (beta nominal)

orbits : 20 in [15382, 15427]
coverage : 2020-10-01 / 2020-10-04
to good : 861
good to bad : 675
to worst : 81
created : 2023-08-22T12:03:27

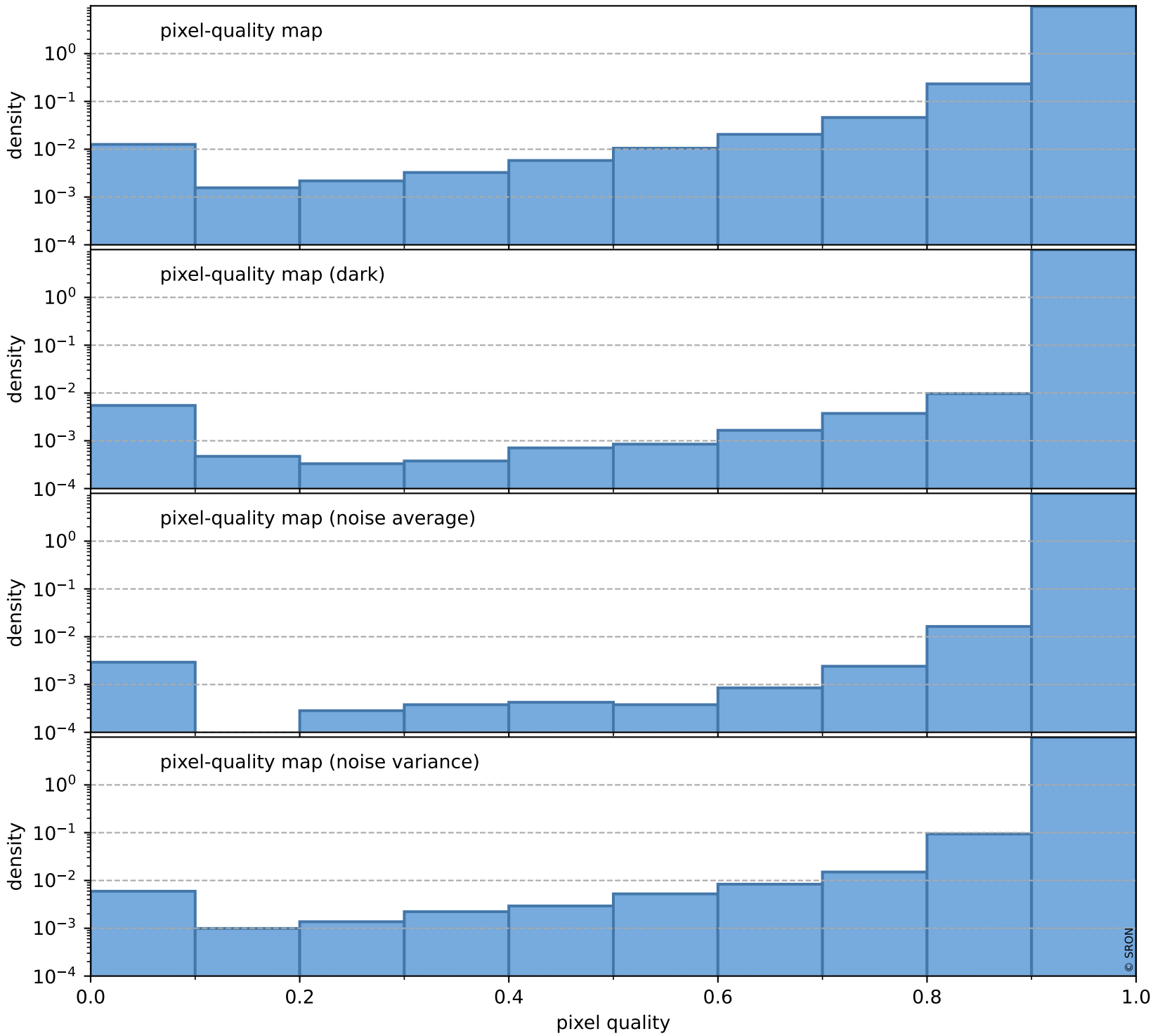
total quality compared with SWIR pixel-quality CKD



Tropomi SWIR pixel quality (beta nominal)

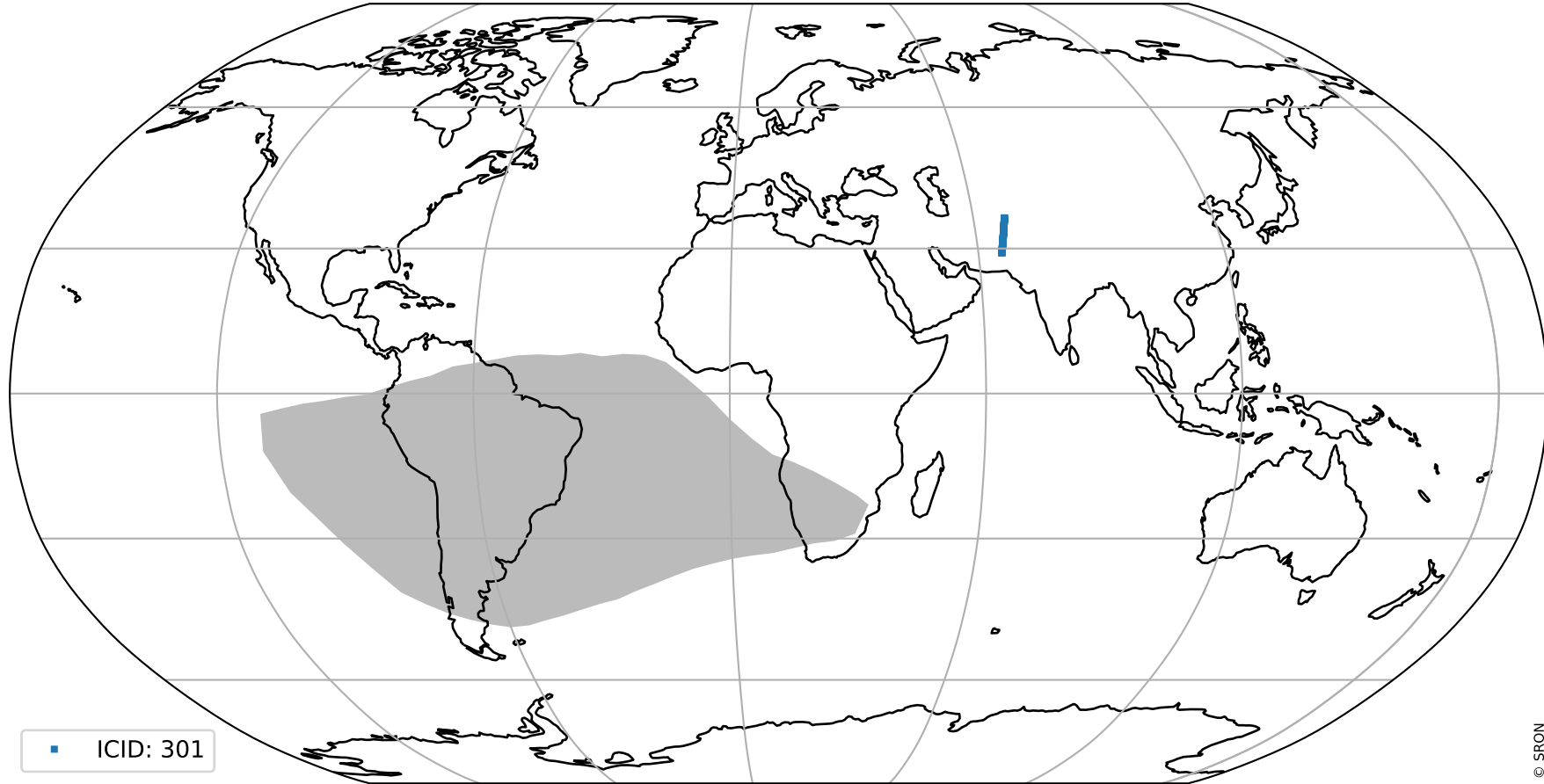
orbits : 20 in [15382, 15427]
coverage : 2020-10-01 / 2020-10-04
created : 2023-08-22T12:03:27

Histograms of pixel-quality



Tropomi SWIR pixel quality (beta nominal) ground-tracks of Sentinel-5P

orbits : 20 in [15382, 15427]
coverage : 2020-10-01 / 2020-10-04
created : 2023-08-22T12:03:28



■ ICID: 301

Tropomi SWIR pixel quality (beta nominal)

orbits : [1867, 15427]
coverage : 2018-02-20 / 2020-10-04
created : 2023-08-22T12:03:28

trend of pixel quality & temperatures

