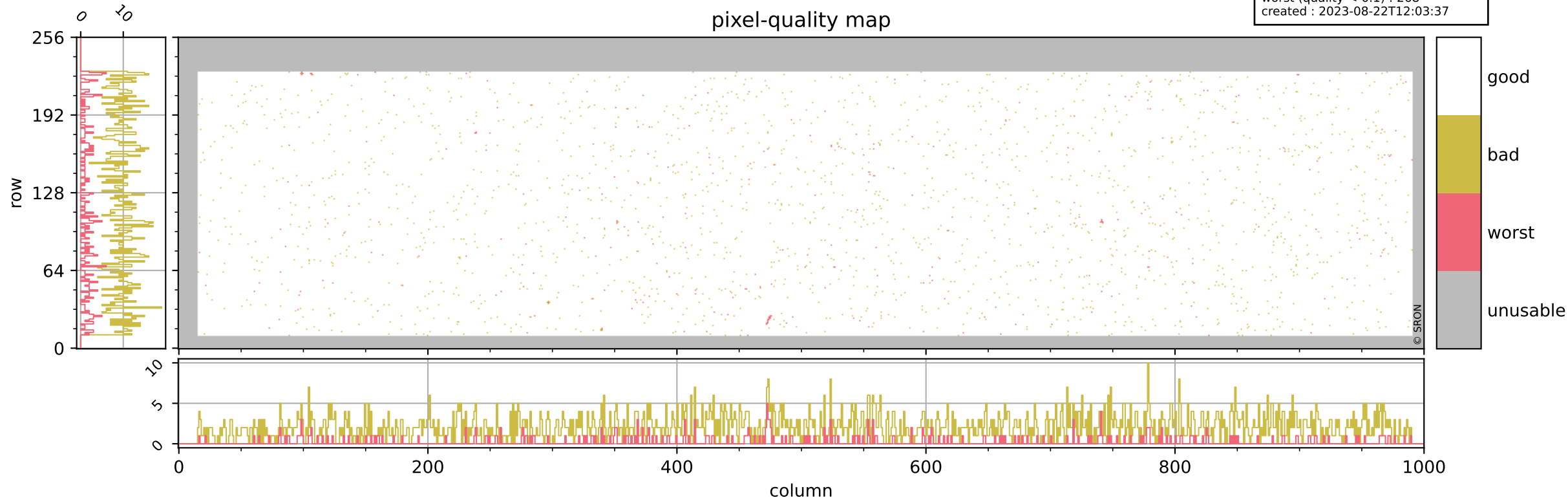


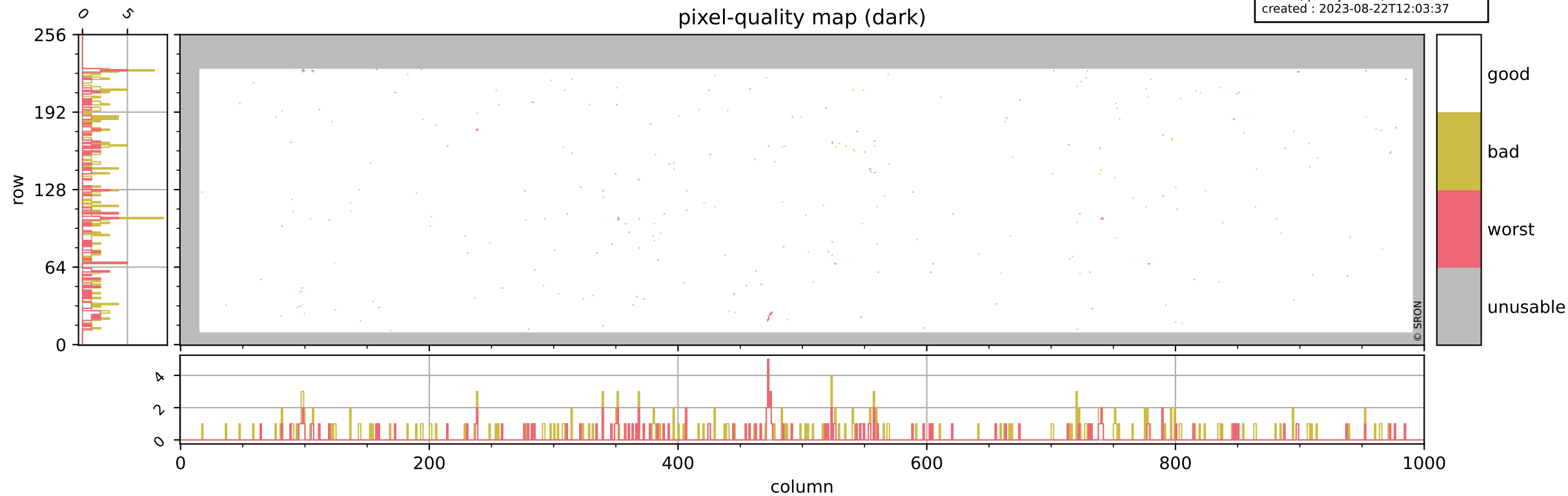
# Tropomi SWIR pixel quality (beta nominal)

orbits : 20 in [15562, 15607]  
coverage : 2020-10-14 / 2020-10-17  
bad (quality < 0.8) : 2131  
worst (quality < 0.1) : 268  
created : 2023-08-22T12:03:37



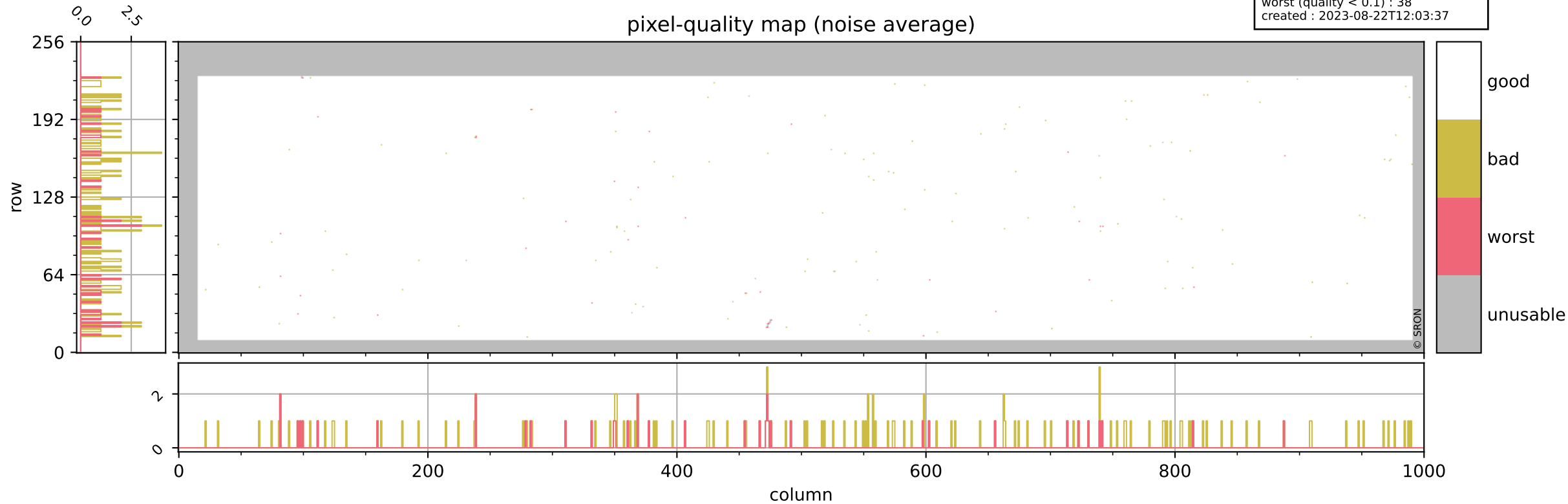
# Tropomi SWIR pixel quality (beta nominal)

orbits : 20 in [15562, 15607]  
coverage : 2020-10-14 / 2020-10-17  
bad (quality < 0.8) : 285  
worst (quality < 0.1) : 119  
created : 2023-08-22T12:03:37



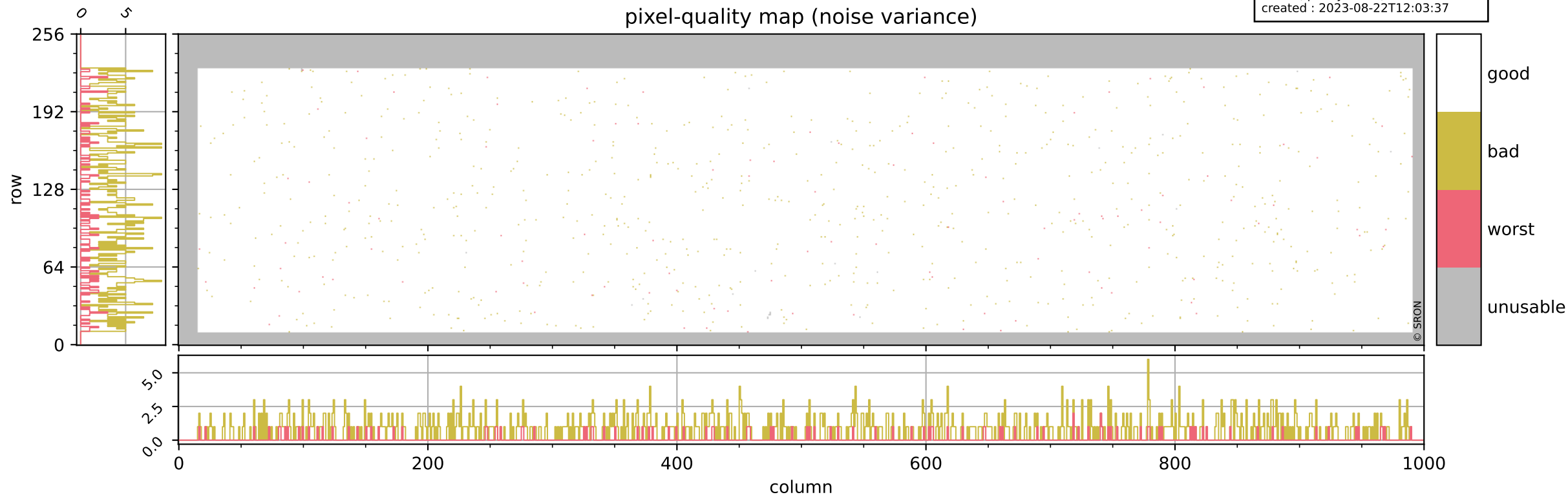
# Tropomi SWIR pixel quality (beta nominal)

orbits : 20 in [15562, 15607]  
coverage : 2020-10-14 / 2020-10-17  
bad (quality < 0.8) : 143  
worst (quality < 0.1) : 38  
created : 2023-08-22T12:03:37



# Tropomi SWIR pixel quality (beta nominal)

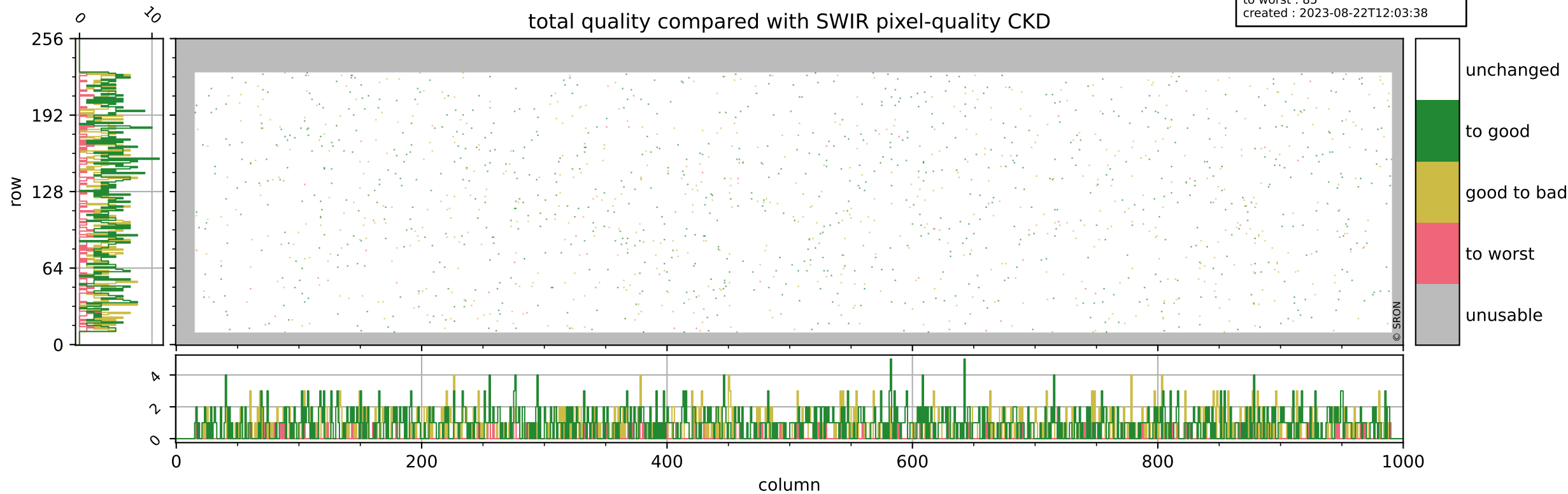
orbits : 20 in [15562, 15607]  
coverage : 2020-10-14 / 2020-10-17  
bad (quality < 0.8) : 828  
worst (quality < 0.1) : 106  
created : 2023-08-22T12:03:37



# Tropomi SWIR pixel quality (beta nominal)

orbits : 20 in [15562, 15607]  
coverage : 2020-10-14 / 2020-10-17  
to good : 866  
good to bad : 638  
to worst : 85  
created : 2023-08-22T12:03:38

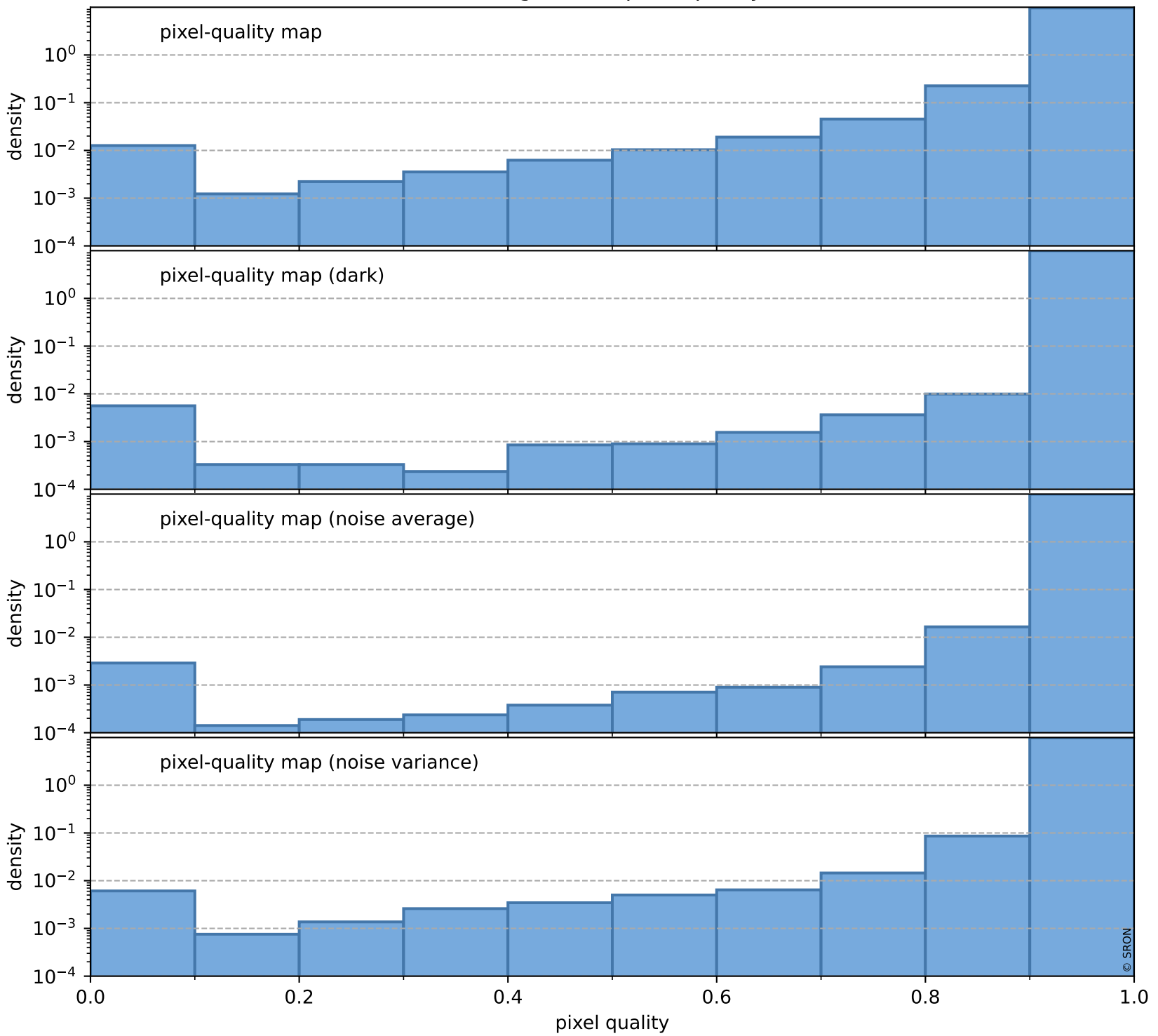
## total quality compared with SWIR pixel-quality CKD



# Tropomi SWIR pixel quality (beta nominal)

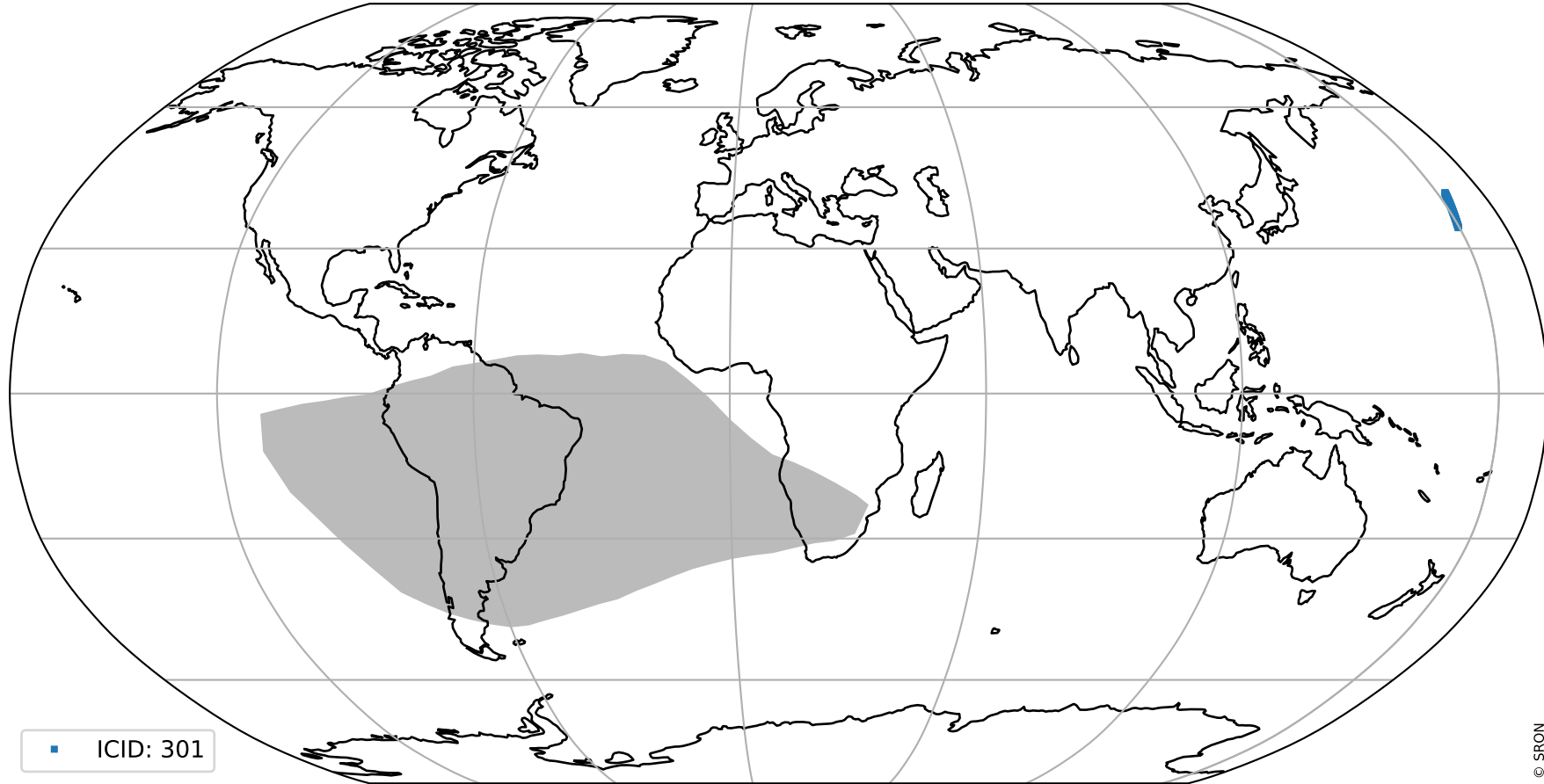
orbits : 20 in [15562, 15607]  
coverage : 2020-10-14 / 2020-10-17  
created : 2023-08-22T12:03:38

## Histograms of pixel-quality



# Tropomi SWIR pixel quality (beta nominal) ground-tracks of Sentinel-5P

orbits : 20 in [15562, 15607]  
coverage : 2020-10-14 / 2020-10-17  
created : 2023-08-22T12:03:38



# Tropomi SWIR pixel quality (beta nominal)

orbits : [1867, 15607]  
coverage : 2018-02-20 / 2020-10-17  
created : 2023-08-22T12:03:39

## trend of pixel quality & temperatures

