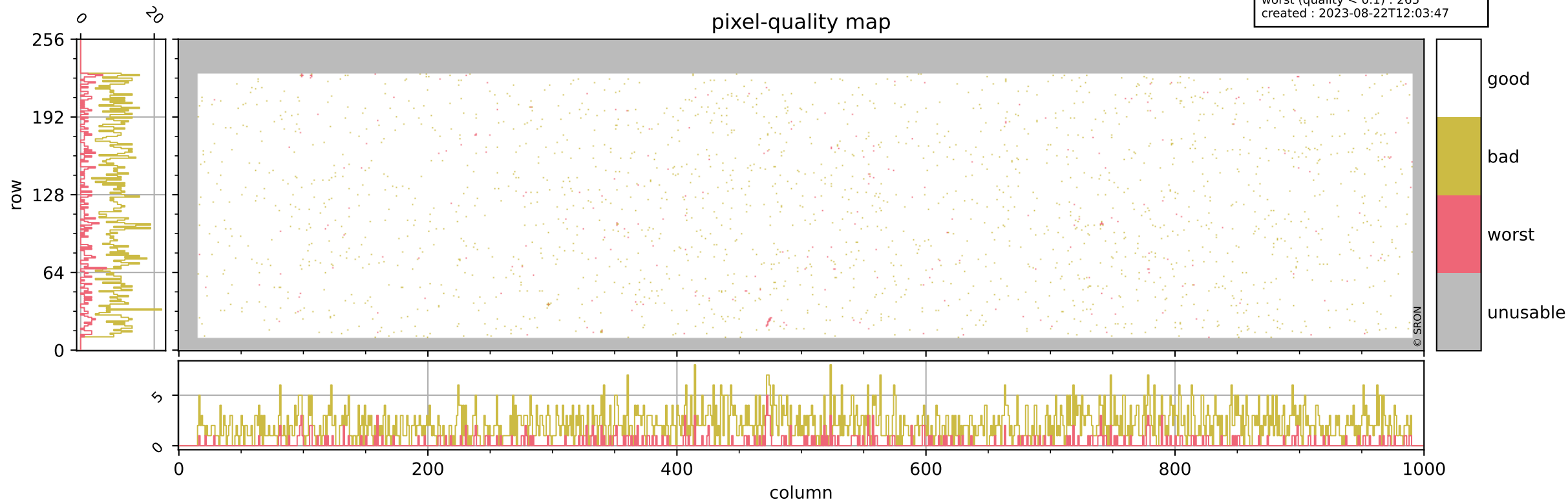


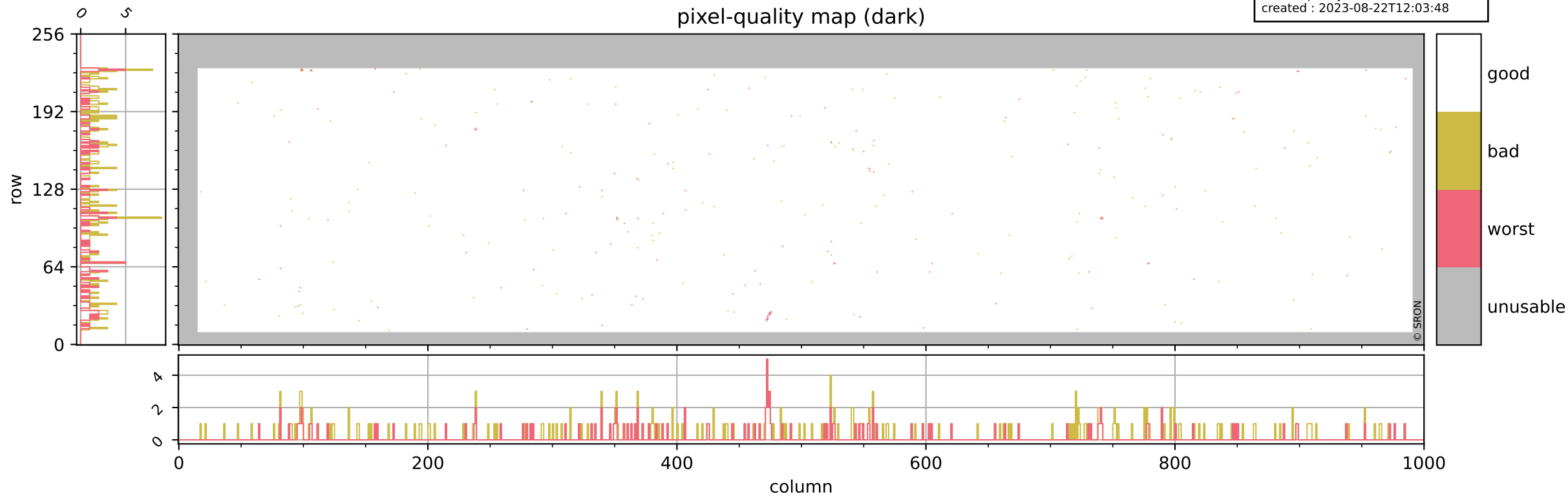
Tropomi SWIR pixel quality (beta nominal)

orbits : 20 in [15742, 15787]
coverage : 2020-10-27 / 2020-10-30
bad (quality < 0.8) : 2133
worst (quality < 0.1) : 265
created : 2023-08-22T12:03:47



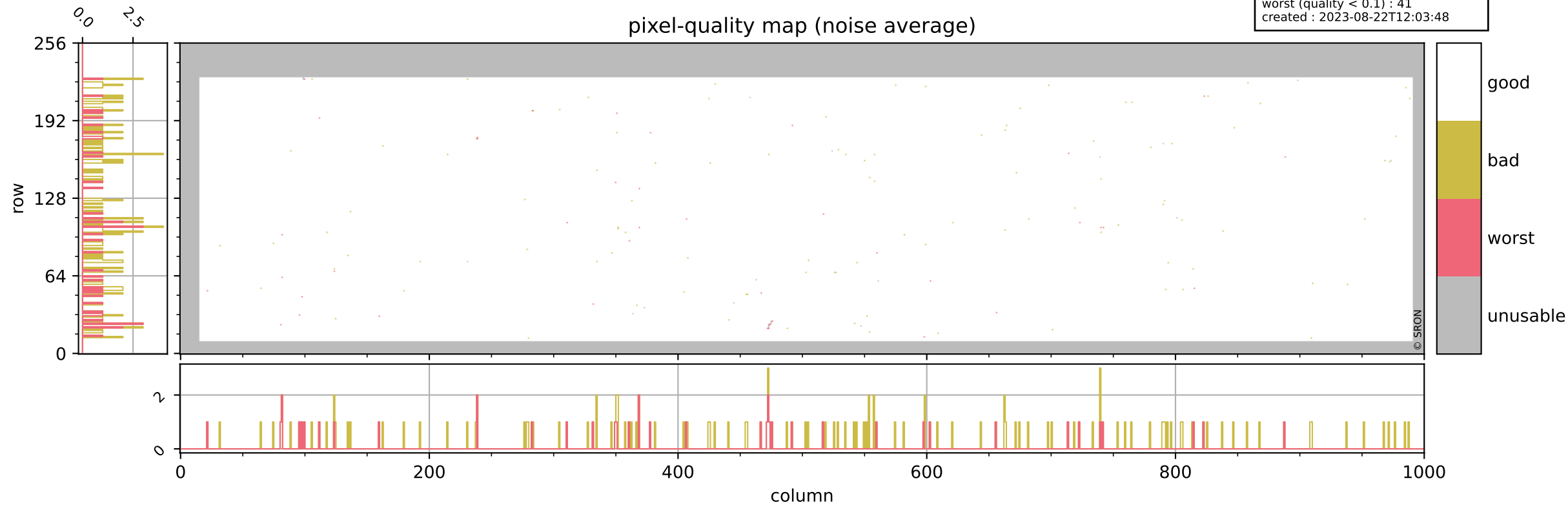
Tropomi SWIR pixel quality (beta nominal)

orbits : 20 in [15742, 15787]
coverage : 2020-10-27 / 2020-10-30
bad (quality < 0.8) : 286
worst (quality < 0.1) : 120
created : 2023-08-22T12:03:48



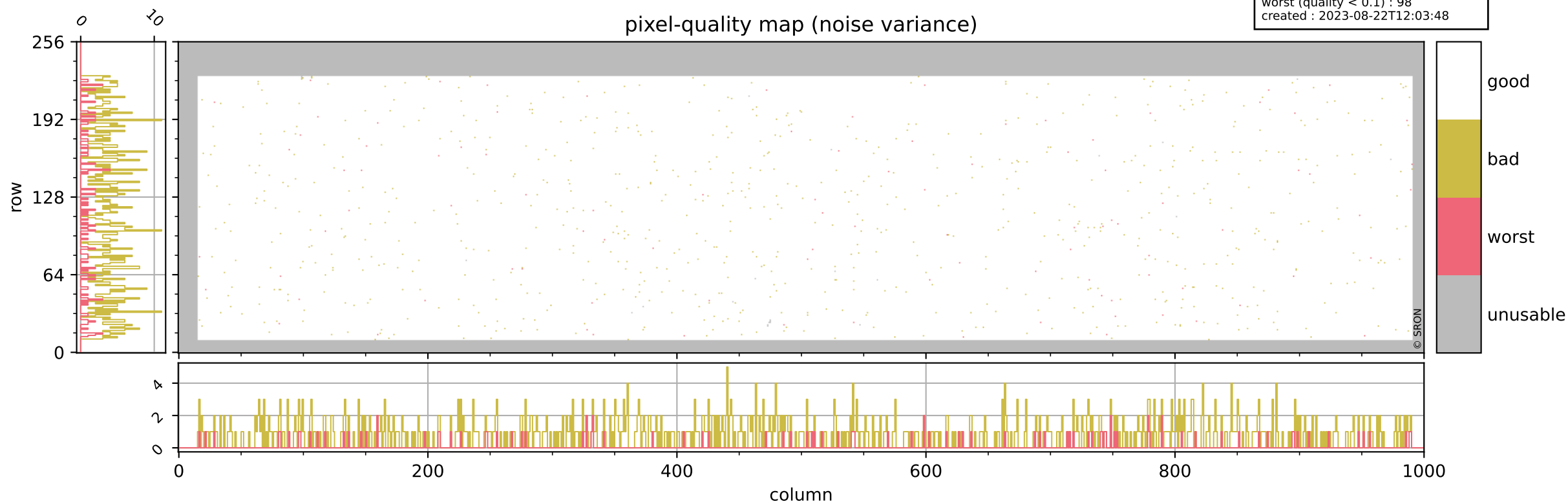
Tropomi SWIR pixel quality (beta nominal)

orbits : 20 in [15742, 15787]
coverage : 2020-10-27 / 2020-10-30
bad (quality < 0.8) : 142
worst (quality < 0.1) : 41
created : 2023-08-22T12:03:48



Tropomi SWIR pixel quality (beta nominal)

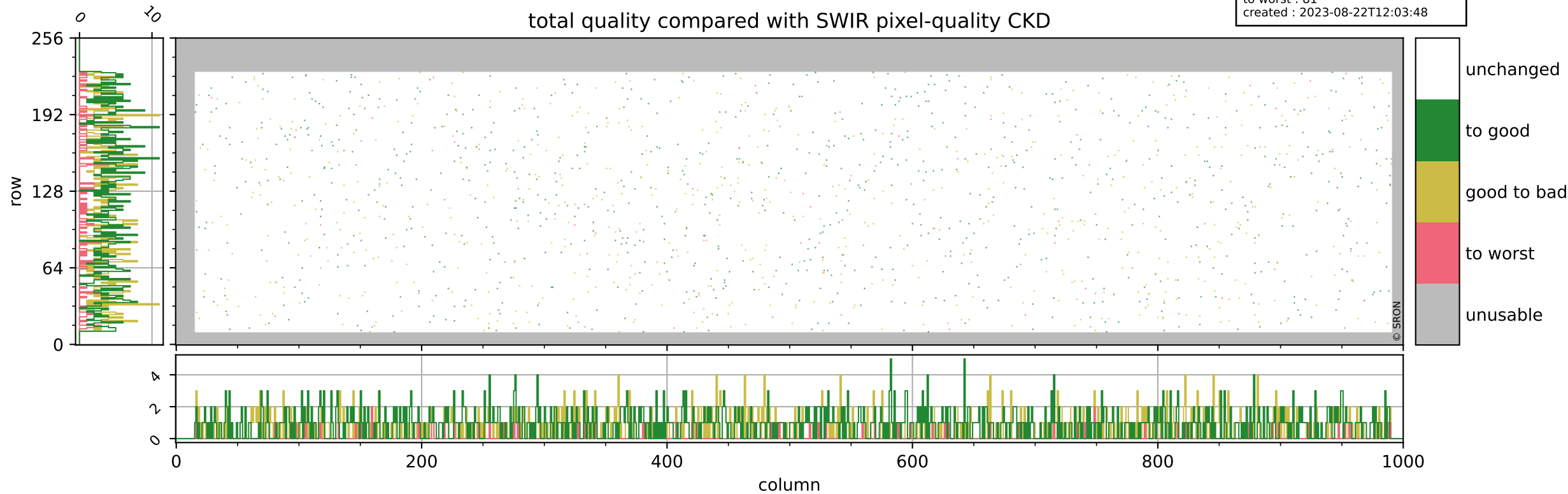
orbits : 20 in [15742, 15787]
coverage : 2020-10-27 / 2020-10-30
bad (quality < 0.8) : 817
worst (quality < 0.1) : 98
created : 2023-08-22T12:03:48



Tropomi SWIR pixel quality (beta nominal)

orbits : 20 in [15742, 15787]
coverage : 2020-10-27 / 2020-10-30
to good : 863
good to bad : 646
to worst : 81
created : 2023-08-22T12:03:48

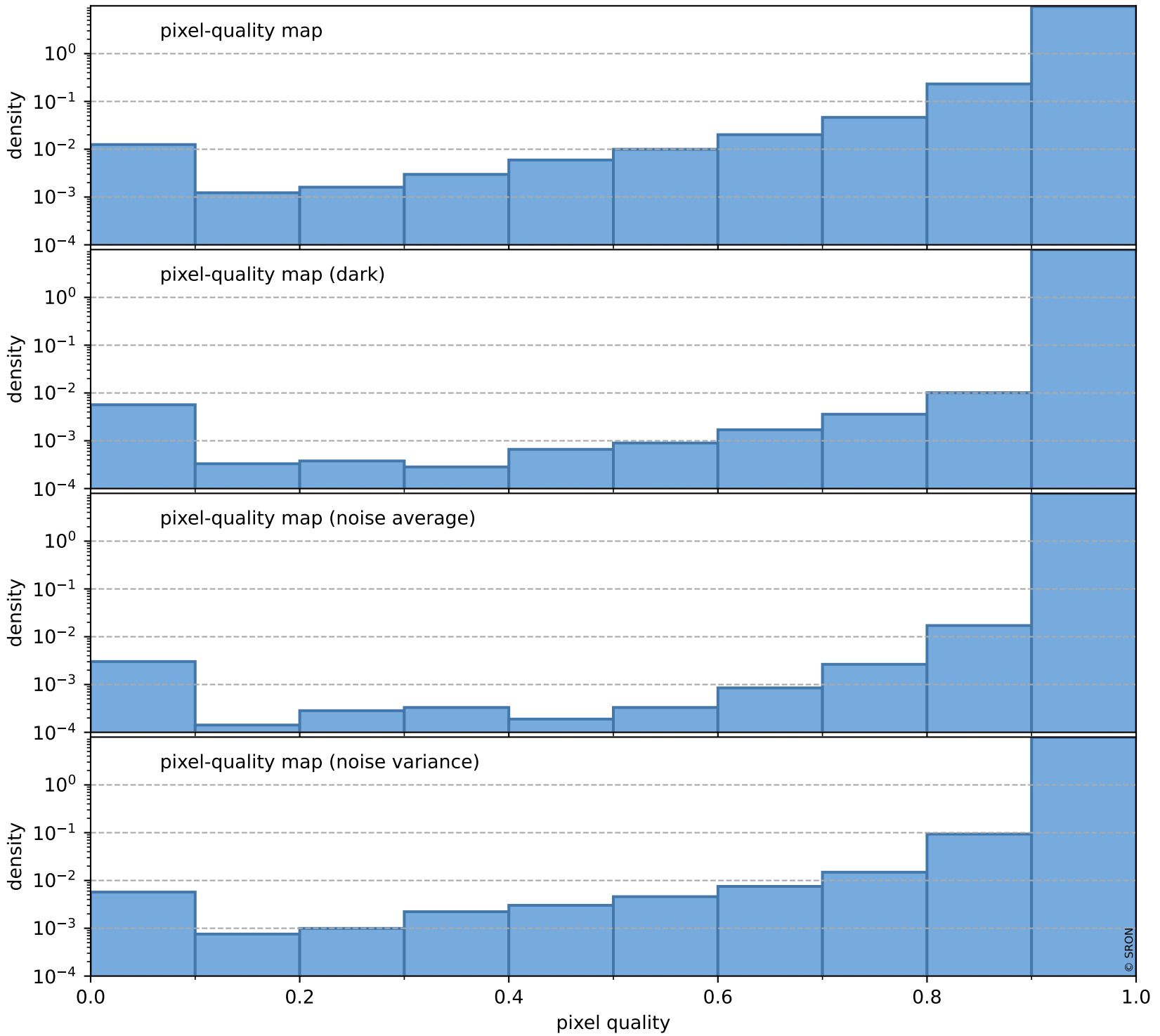
total quality compared with SWIR pixel-quality CKD



Tropomi SWIR pixel quality (beta nominal)

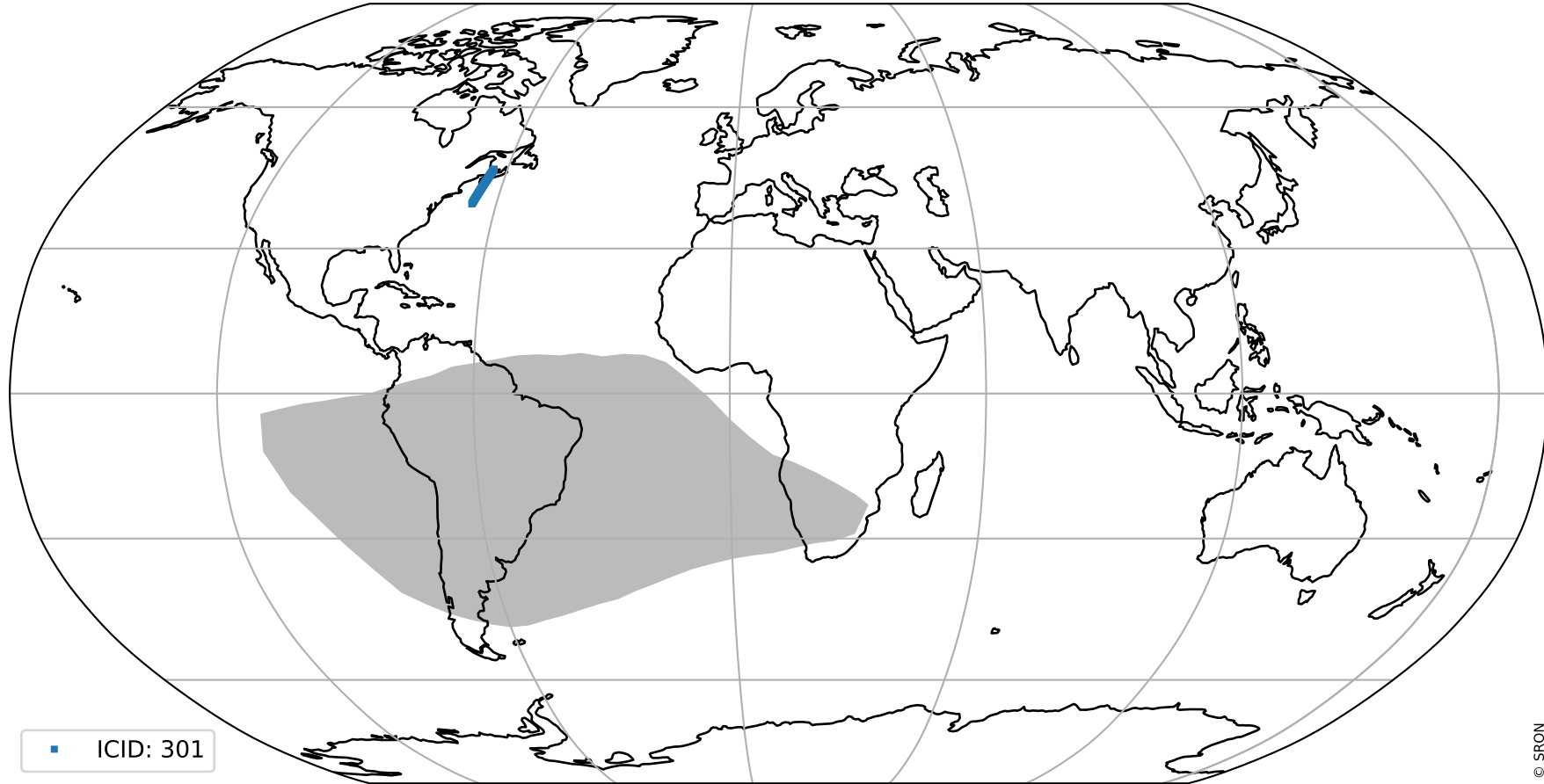
orbits : 20 in [15742, 15787]
coverage : 2020-10-27 / 2020-10-30
created : 2023-08-22T12:03:49

Histograms of pixel-quality



Tropomi SWIR pixel quality (beta nominal) ground-tracks of Sentinel-5P

orbits : 20 in [15742, 15787]
coverage : 2020-10-27 / 2020-10-30
created : 2023-08-22T12:03:49



Tropomi SWIR pixel quality (beta nominal)

orbits : [1867, 15787]
coverage : 2018-02-20 / 2020-10-30
created : 2023-08-22T12:03:49

trend of pixel quality & temperatures

