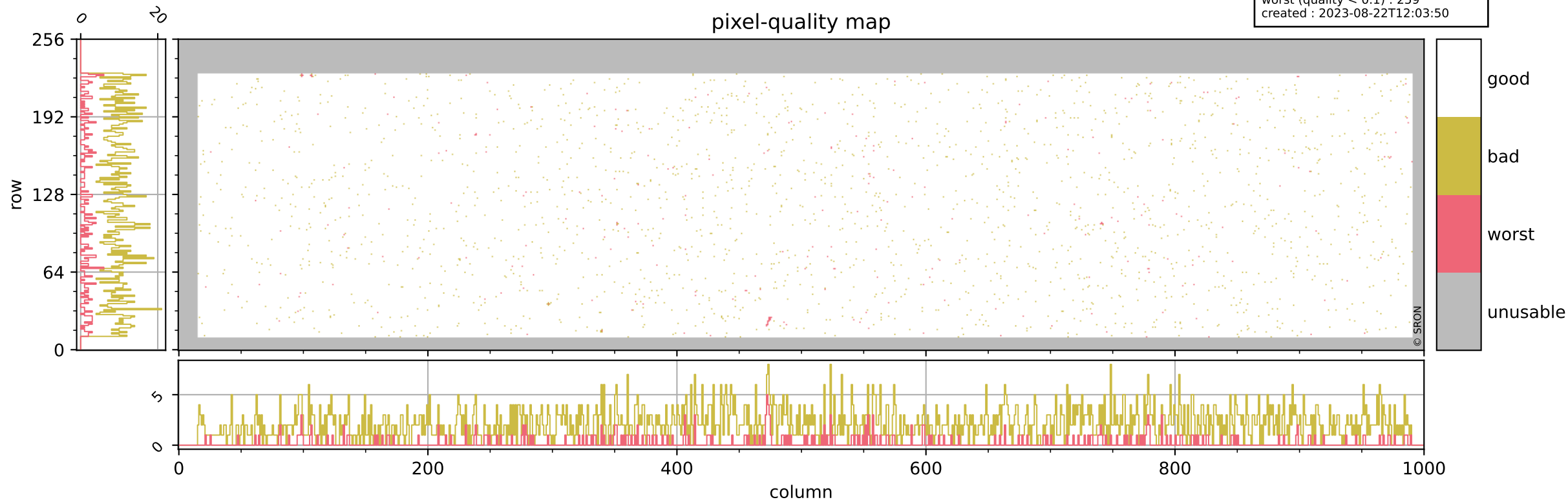


# Tropomi SWIR pixel quality (beta nominal)

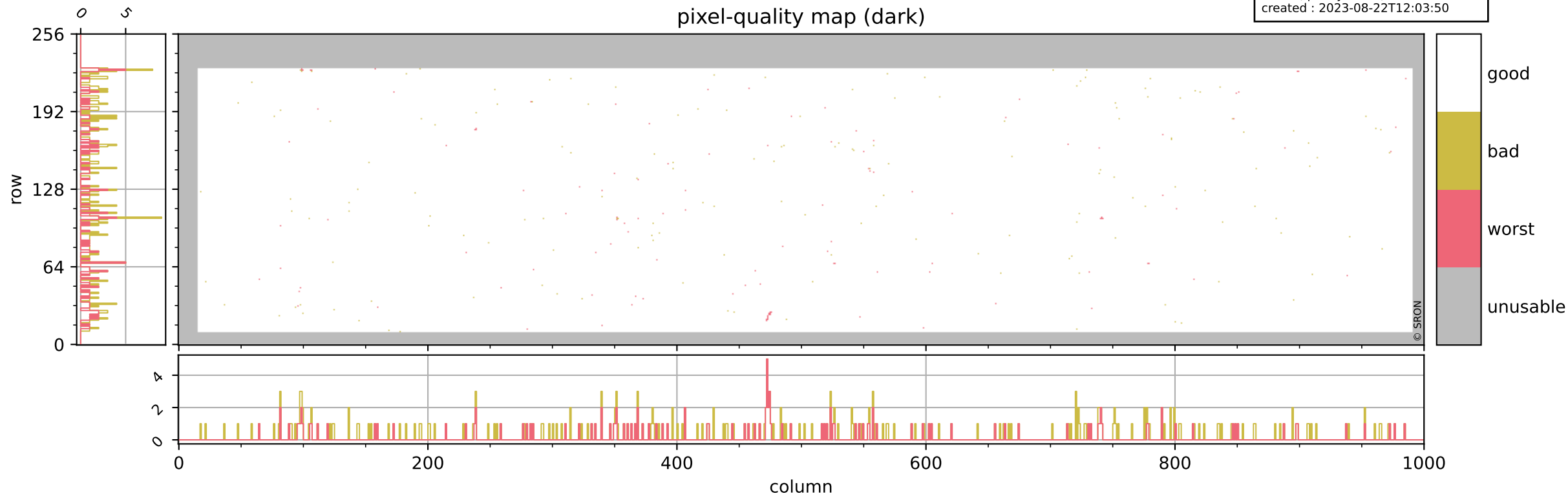
orbits : 18 in [15787, 15832]  
coverage : 2020-10-30 / 2020-11-02  
bad (quality < 0.8) : 2148  
worst (quality < 0.1) : 259  
created : 2023-08-22T12:03:50

## pixel-quality map



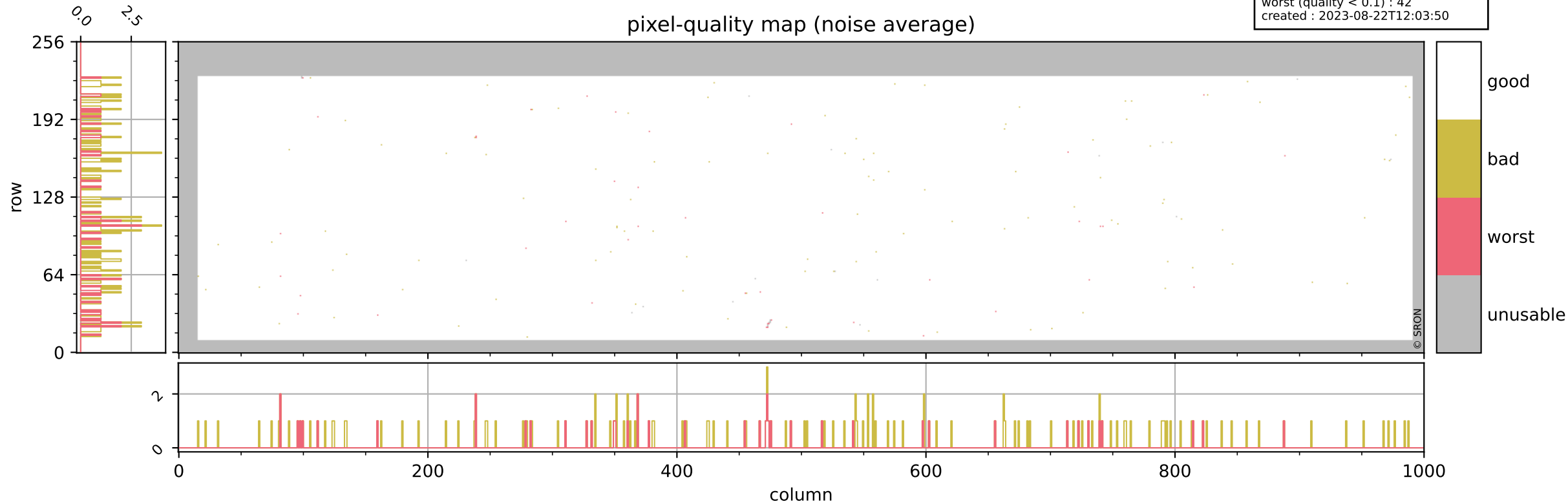
# Tropomi SWIR pixel quality (beta nominal)

orbits : 18 in [15787, 15832]  
coverage : 2020-10-30 / 2020-11-02  
bad (quality < 0.8) : 283  
worst (quality < 0.1) : 121  
created : 2023-08-22T12:03:50



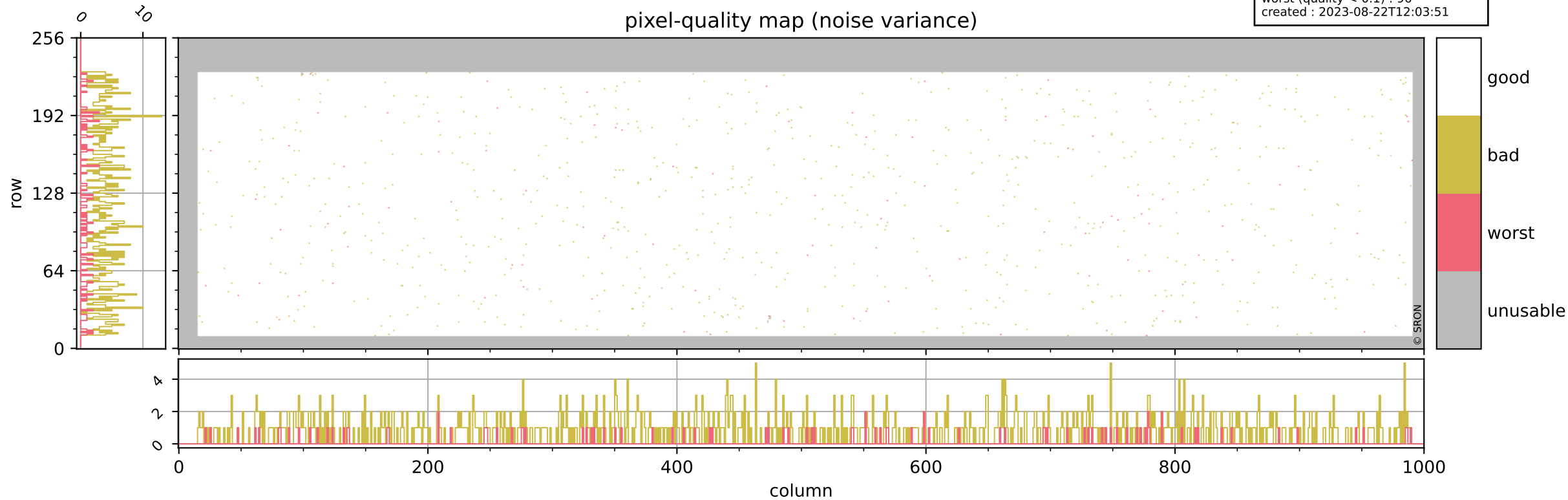
# Tropomi SWIR pixel quality (beta nominal)

orbits : 18 in [15787, 15832]  
coverage : 2020-10-30 / 2020-11-02  
bad (quality < 0.8) : 147  
worst (quality < 0.1) : 42  
created : 2023-08-22T12:03:50



# Tropomi SWIR pixel quality (beta nominal)

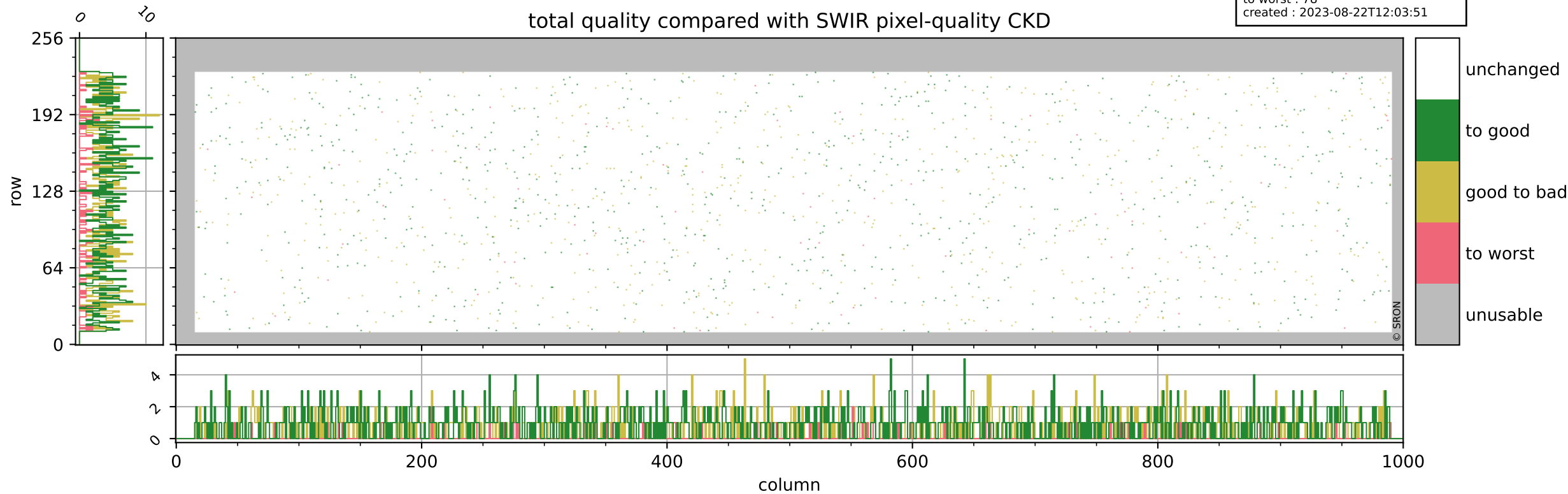
orbits : 18 in [15787, 15832]  
coverage : 2020-10-30 / 2020-11-02  
bad (quality < 0.8) : 839  
worst (quality < 0.1) : 96  
created : 2023-08-22T12:03:51



# Tropomi SWIR pixel quality (beta nominal)

orbits : 18 in [15787, 15832]  
coverage : 2020-10-30 / 2020-11-02  
to good : 868  
good to bad : 669  
to worst : 78  
created : 2023-08-22T12:03:51

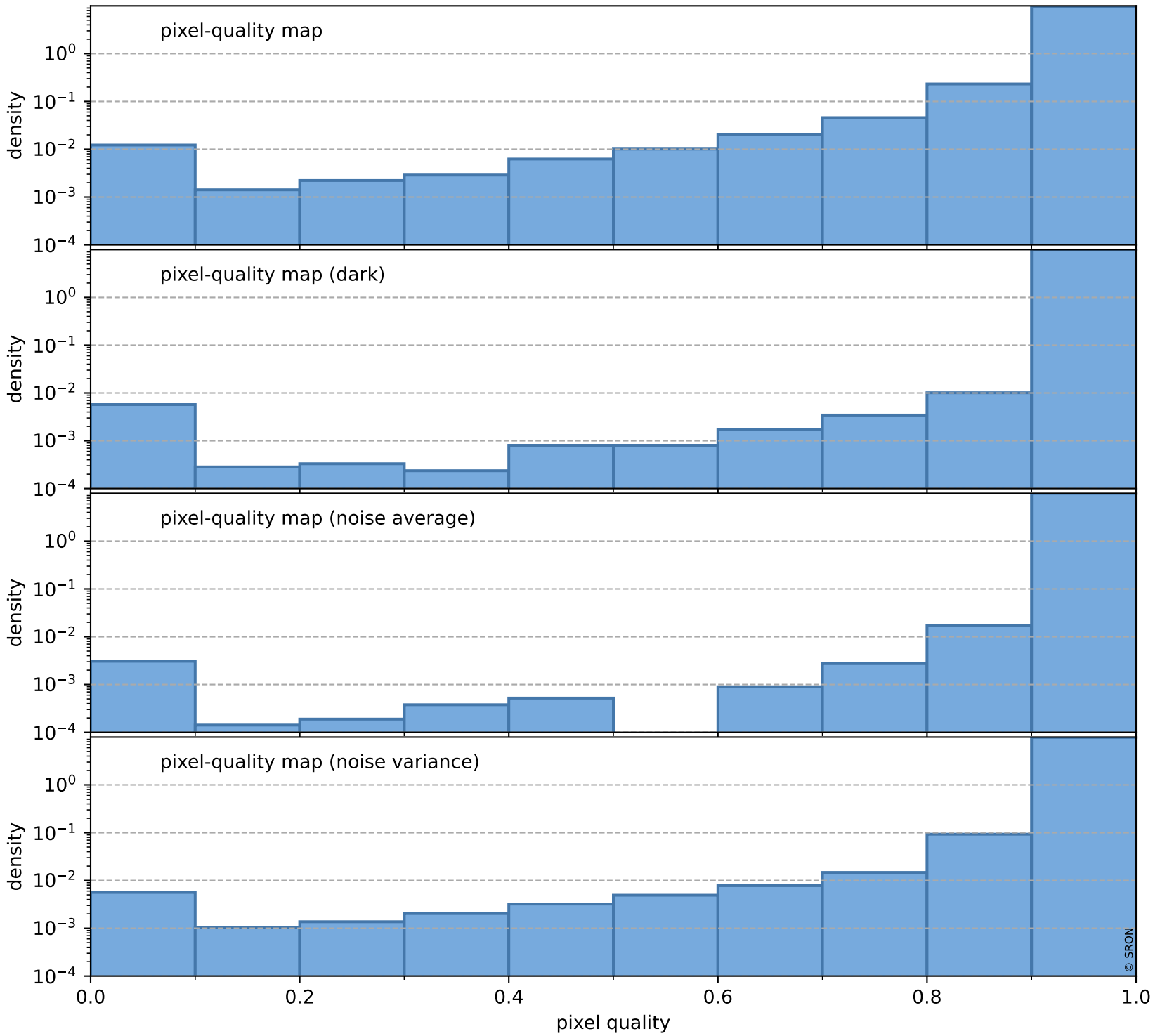
## total quality compared with SWIR pixel-quality CKD



# Tropomi SWIR pixel quality (beta nominal)

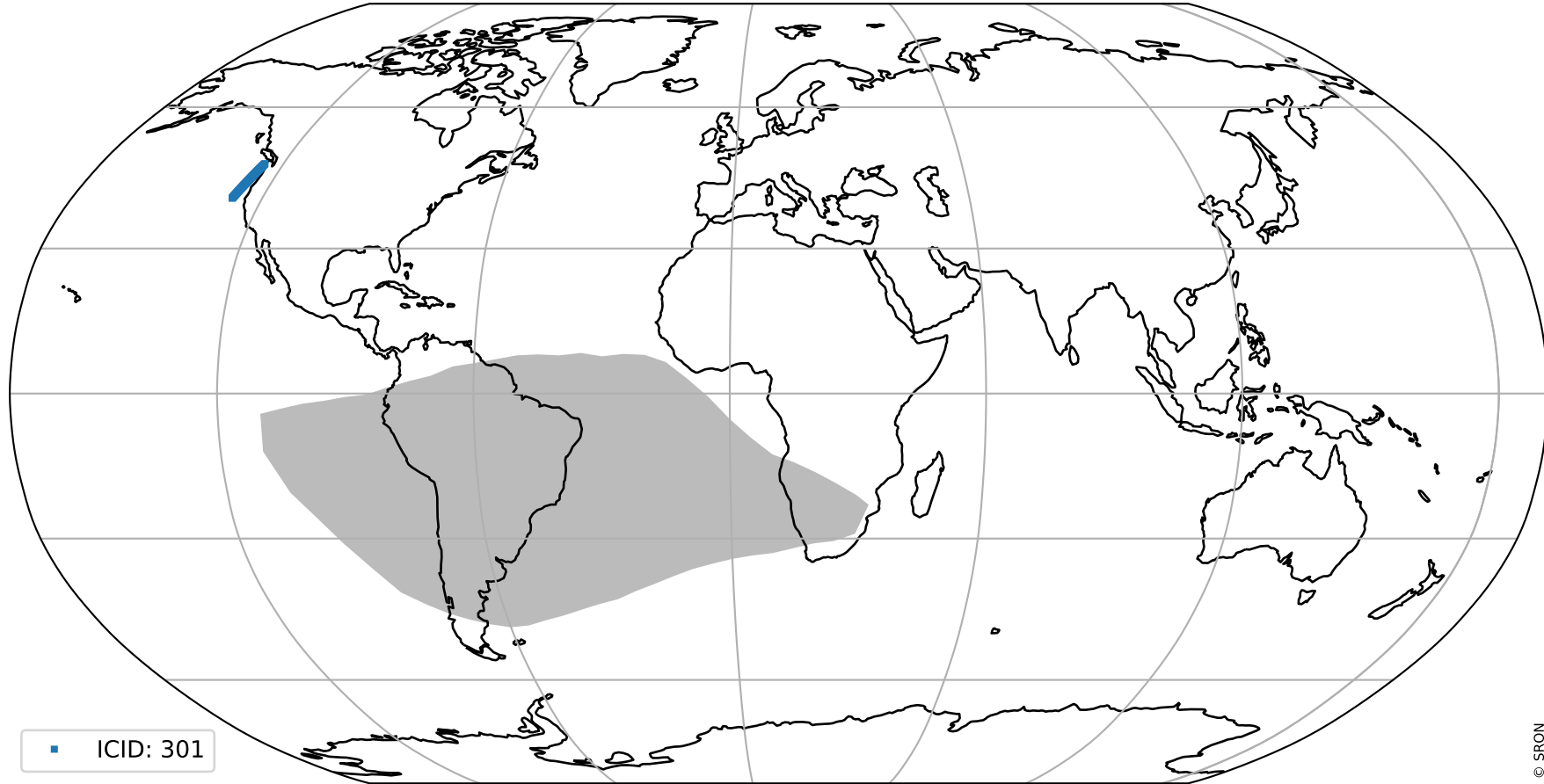
orbits : 18 in [15787, 15832]  
coverage : 2020-10-30 / 2020-11-02  
created : 2023-08-22T12:03:51

## Histograms of pixel-quality



# Tropomi SWIR pixel quality (beta nominal) ground-tracks of Sentinel-5P

orbits : 18 in [15787, 15832]  
coverage : 2020-10-30 / 2020-11-02  
created : 2023-08-22T12:03:52



# Tropomi SWIR pixel quality (beta nominal)

orbits : [1867, 15832]  
coverage : 2018-02-20 / 2020-11-02  
created : 2023-08-22T12:03:52

## trend of pixel quality & temperatures

