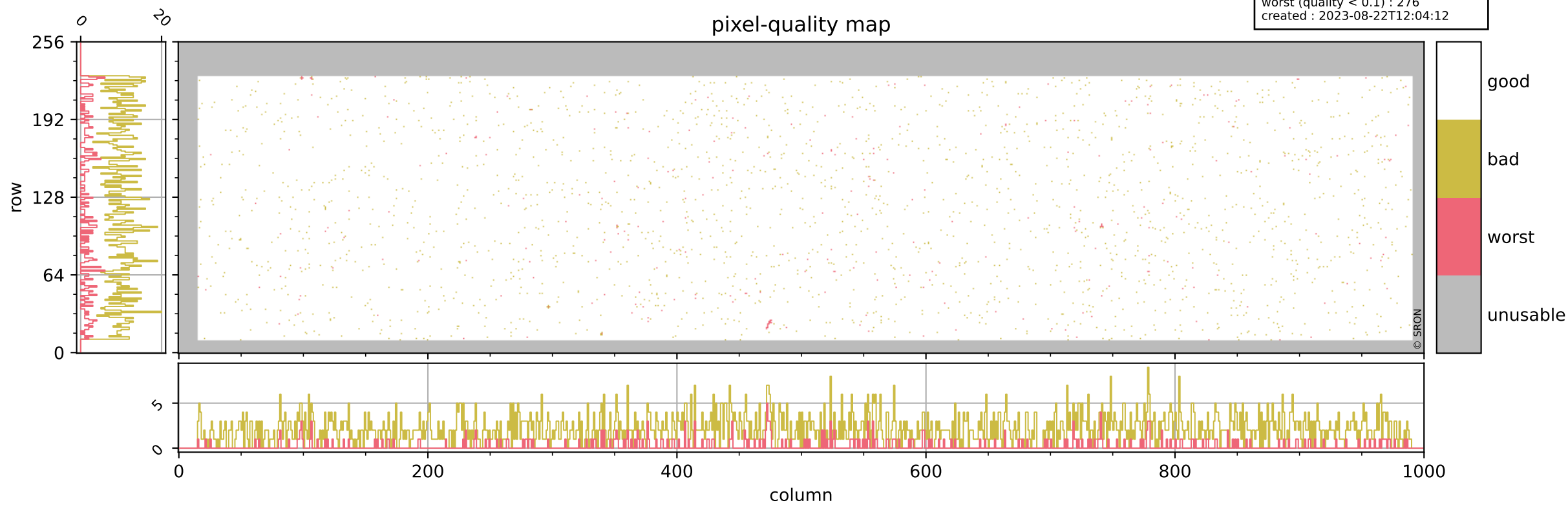


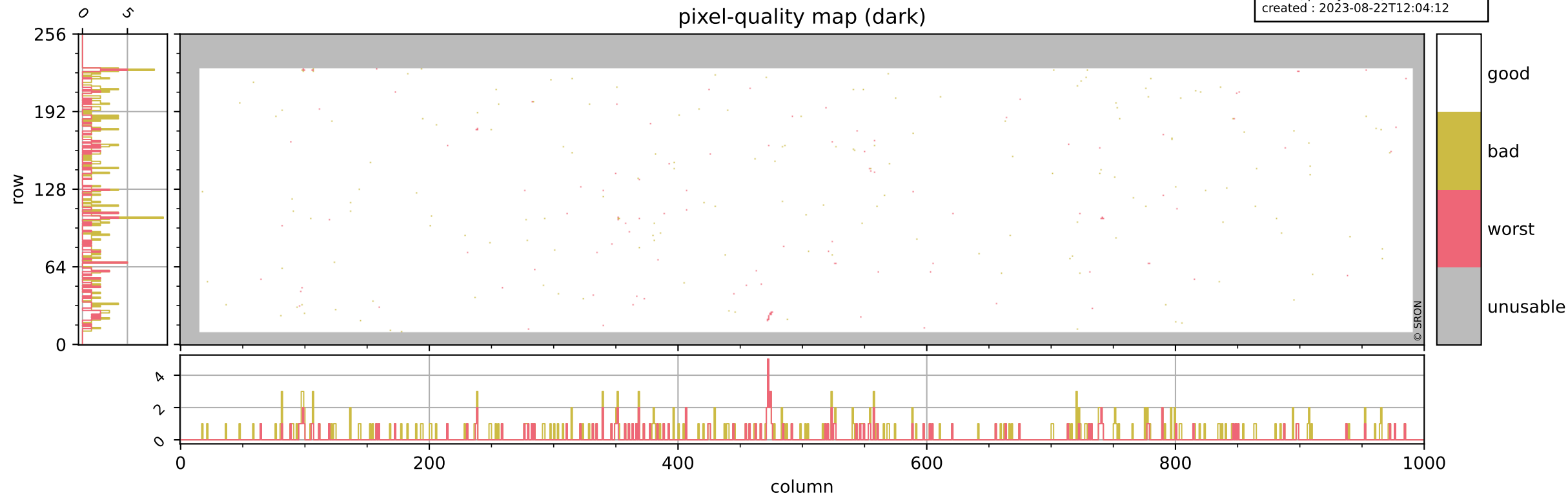
Tropomi SWIR pixel quality (beta nominal)

orbits : 18 in [16147, 16192]
coverage : 2020-11-24 / 2020-11-27
bad (quality < 0.8) : 2202
worst (quality < 0.1) : 276
created : 2023-08-22T12:04:12



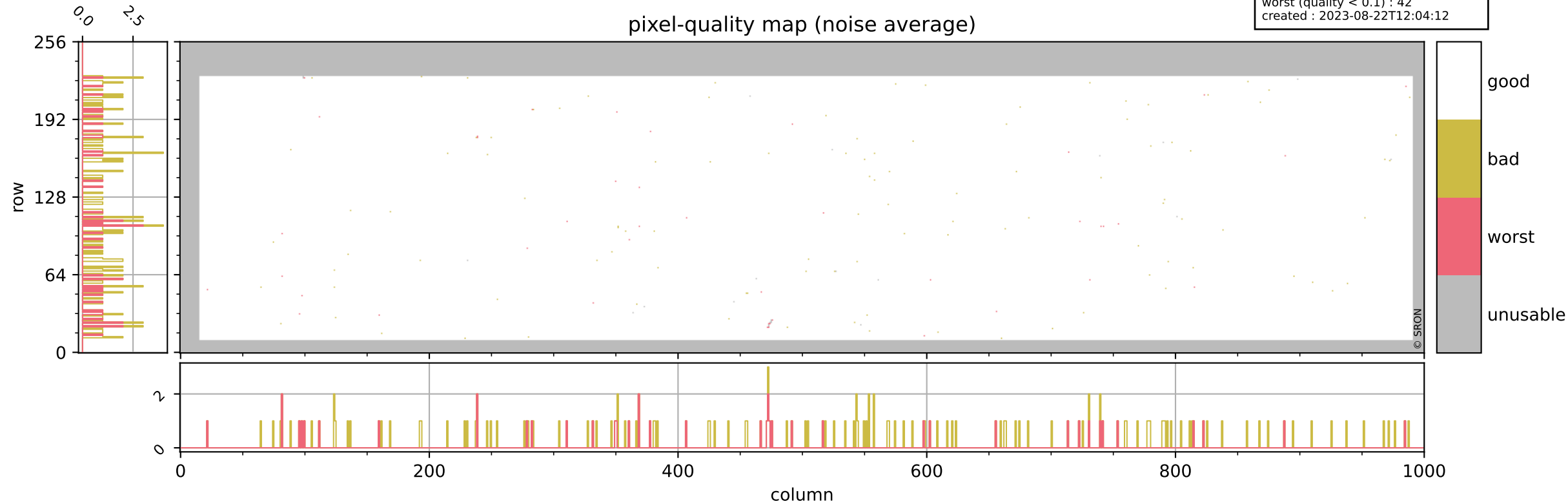
Tropomi SWIR pixel quality (beta nominal)

orbits : 18 in [16147, 16192]
coverage : 2020-11-24 / 2020-11-27
bad (quality < 0.8) : 289
worst (quality < 0.1) : 120
created : 2023-08-22T12:04:12



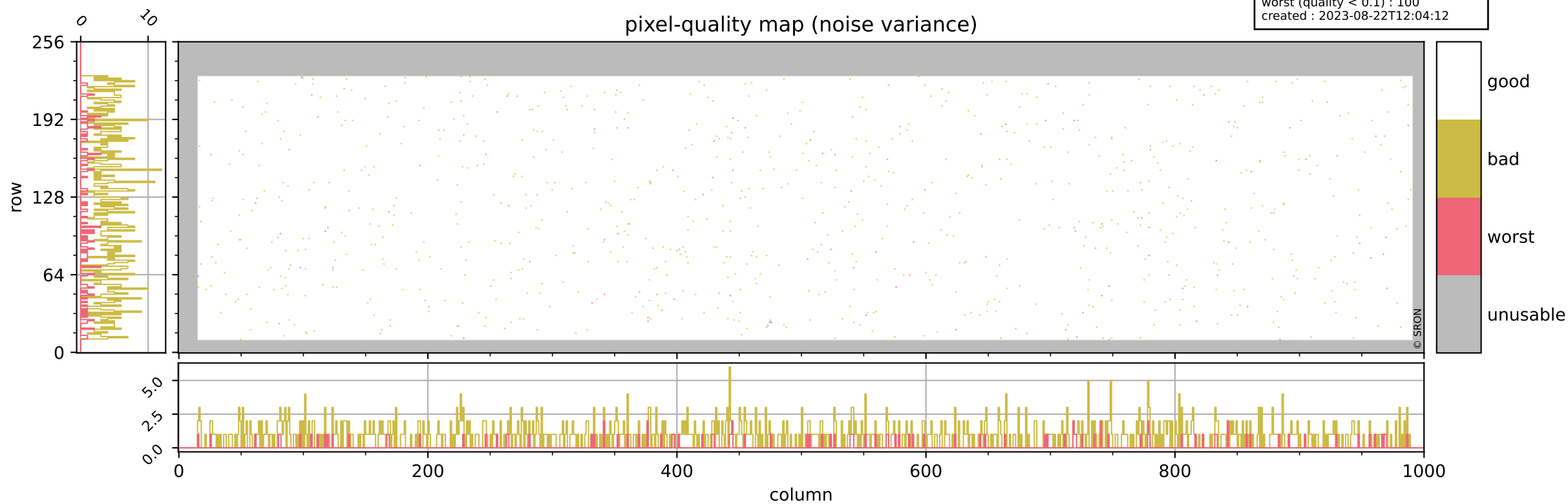
Tropomi SWIR pixel quality (beta nominal)

orbits : 18 in [16147, 16192]
coverage : 2020-11-24 / 2020-11-27
bad (quality < 0.8) : 148
worst (quality < 0.1) : 42
created : 2023-08-22T12:04:12



Tropomi SWIR pixel quality (beta nominal)

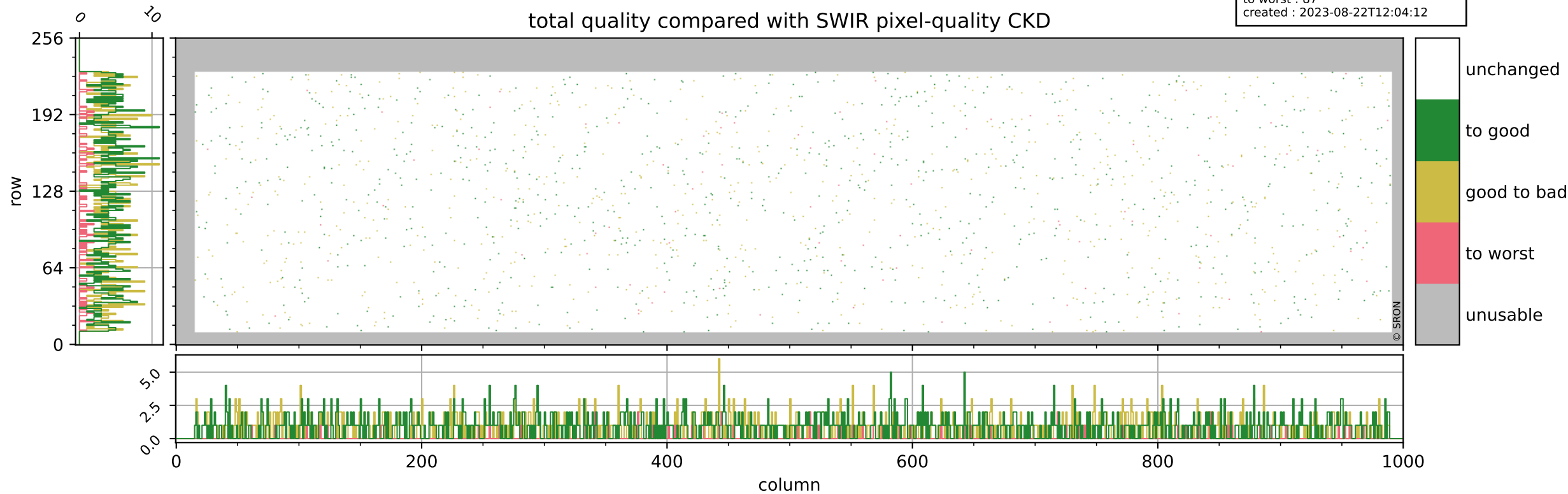
orbits : 18 in [16147, 16192]
coverage : 2020-11-24 / 2020-11-27
bad (quality < 0.8) : 886
worst (quality < 0.1) : 100
created : 2023-08-22T12:04:12



Tropomi SWIR pixel quality (beta nominal)

orbits : 18 in [16147, 16192]
coverage : 2020-11-24 / 2020-11-27
to good : 864
good to bad : 707
to worst : 87
created : 2023-08-22T12:04:12

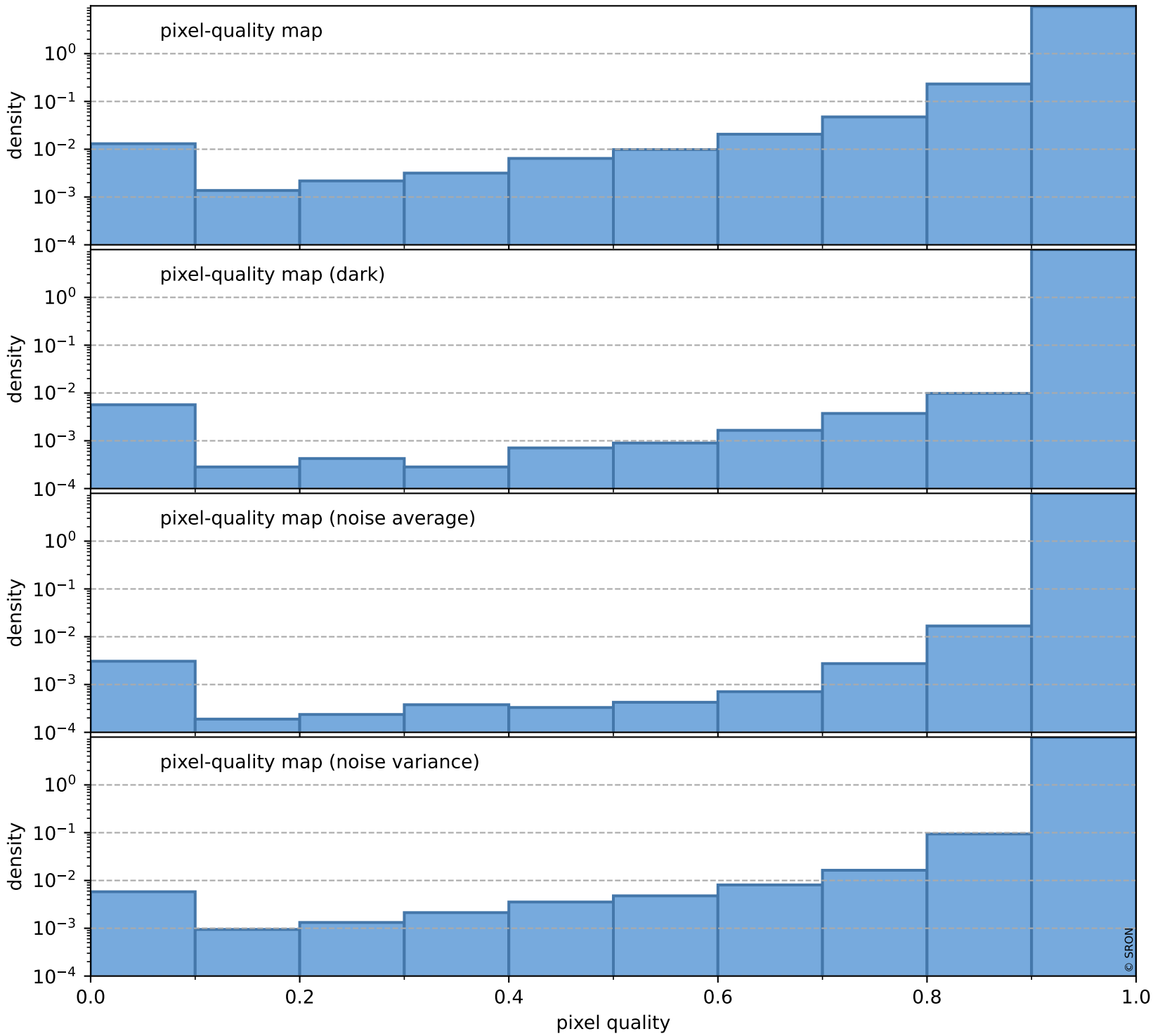
total quality compared with SWIR pixel-quality CKD



Tropomi SWIR pixel quality (beta nominal)

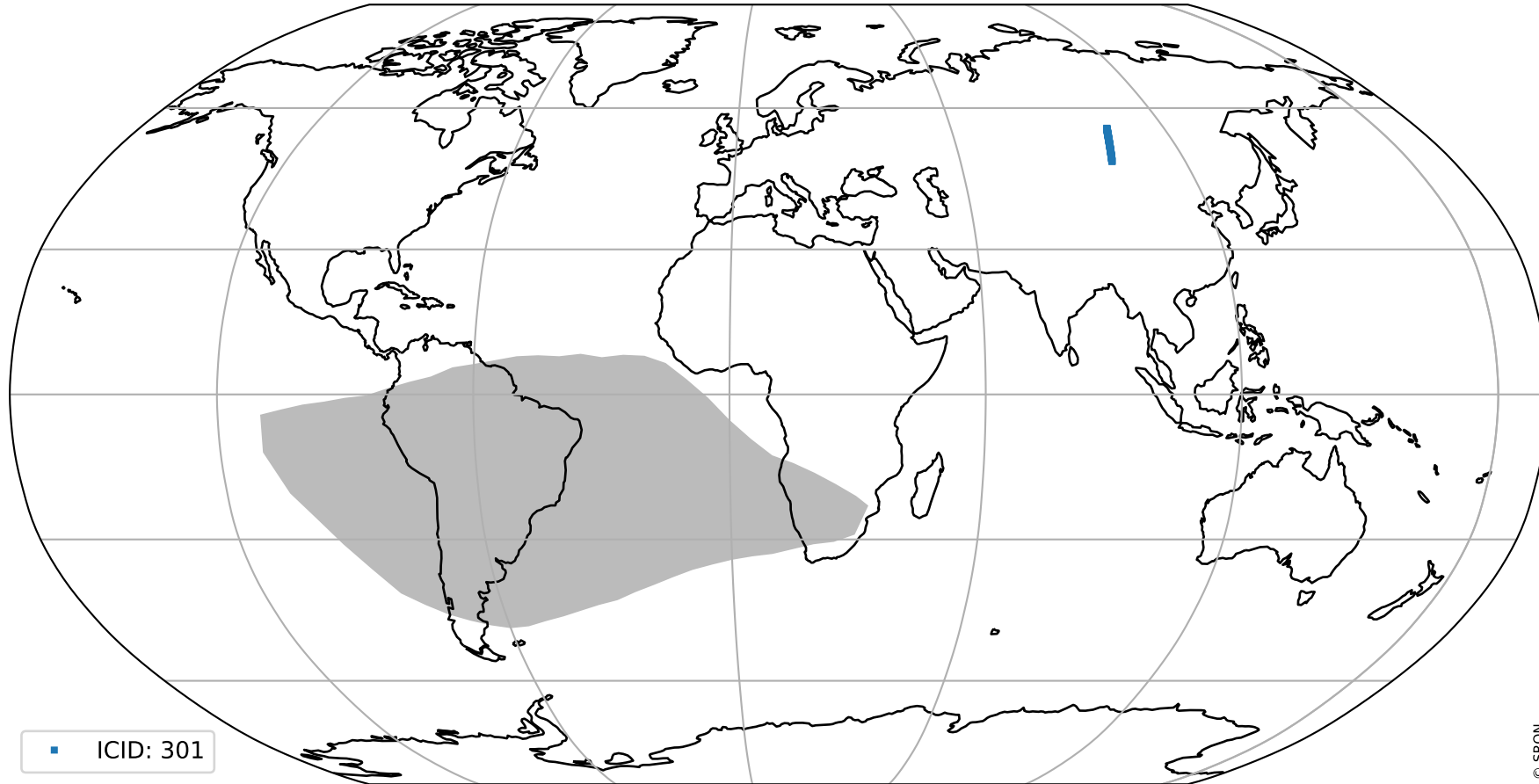
orbits : 18 in [16147, 16192]
coverage : 2020-11-24 / 2020-11-27
created : 2023-08-22T12:04:13

Histograms of pixel-quality



Tropomi SWIR pixel quality (beta nominal) ground-tracks of Sentinel-5P

orbits : 18 in [16147, 16192]
coverage : 2020-11-24 / 2020-11-27
created : 2023-08-22T12:04:13



Tropomi SWIR pixel quality (beta nominal)

orbits : [1867, 16192]
coverage : 2018-02-20 / 2020-11-27
created : 2023-08-22T12:04:14

trend of pixel quality & temperatures

